

AUG 2019

SHOREWOOD SCHOOL DISTRICT FACILITIES

PROJECT UPDATE



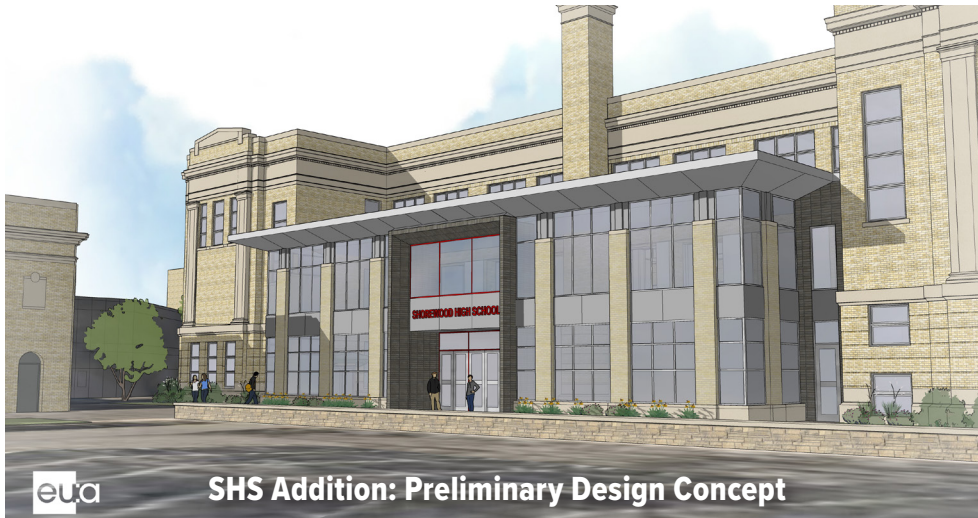
WHAT'S HAPPENING?

FACILITIES DESIGN PRESENTATION AT SCHOOL BOARD MEETING AUGUST 13

Eppstein Uhen Architects (EUA) presented a Design Update to the School Board on August 13. EUA shared a detailed progress report, preliminary floor plans for Atwater, Lake Bluff, and SIS, and preliminary design concepts for the addition at SHS. These plans will continue to evolve with input from district staff and administration this fall. The school board presentation was the first step in the process of submitting designs for approval. All exterior changes or additions will also require approval by the Village Design Review Board. The School Board presentation is available on the District website under Board of Education>Agendas, Notices and Minutes.

The preliminary design concepts were informed by the June 18 Community Design Workshop. At that meeting, participants shared their ideas about exterior design direction. Feedback indicated that the elementary ramps and kitchen additions should lean towards blending with the existing building designs, while the High School addition at the back of the Main Academic Building could have more contrast.

The next Community Design Update will be held in late October.



SHS Addition: Preliminary Design Concept

WHAT SHOULD OUR SPACES SAY TO THE COMMUNITY?

June 18 Community Design Workshop Feedback:



WHAT'S NEXT?

- » **September:** Exterior designs presented to the Village Design Review Board
- » **October:** Community Design Update meeting, stay tuned!

LEARN MORE www.shorewood.k12.wi.us/facilities/ • 414-963-6900 • Follow us on

PROJECT TIMELINE

Architectural Design

April 2019 - April 2020

Project Bidding

May-June 2020

Atwater/Lake Bluff Renovation

June 2020-July 2022

SIS Renovation

June 2020-July 2021

SHS Addition/Renovation

June 2021-July 2023

UPCOMING FALL WORK

August:

Interior design concepts/ colors reviewed with District Management Team (DMT)

Back-to-school All Staff Facilities Update

Staff Design meetings (all buildings)

September:

Initial ramp designs and Lake Bluff kitchen addition reviewed with DMT and School Board

Schematic Design complete; goes to Village Design Review Board

October:

Community Design Update