

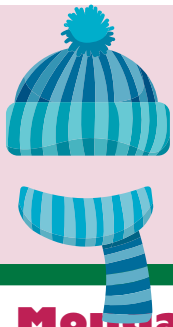
# JANUARY



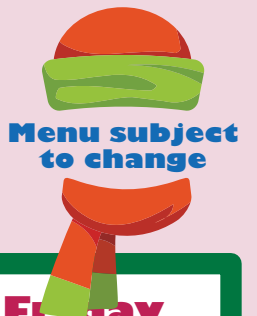
MONDAY	TUESDAY	WEDNESDAY	THURSDAY	FRIDAY
<b>7</b> <b>Staff Development Holiday</b>	<b>8</b>	<b>9</b> Steak Fingers w/Roll Mashed Potatoes Mandarin Oranges 1% White Milk	<b>10</b> Macaroni & Cheese Seasoned Green Beans Chilled Peaches 1% White Milk	<b>11</b> Chicken Nuggets Curly Fries Frosted Pears 1% White Milk
<b>14</b> Cheese Pizza Strips Fresh Garden Coins w/Ranch Dressing 100% Fruit Juice-Frozen Treat 1% White Milk	<b>15</b> Taco Tuesday Golden Corn Banana 1% White Milk	<b>16</b> Chicken Bites Steamed Broccoli Mandarin Oranges 1% White Milk	<b>17</b> Spaghetti & Meatballs Mixed Vegetables Strawberry Applesauce 1% White Milk	<b>18</b> Hamburger Baked Beans Fresh Orange Wedges 1% White Milk
<b>21</b> <b>Staff Development Holiday</b>	<b>22</b> Taco Tuesday Pinto Beans Mixed Fruit 1% White Milk	<b>23</b> Chicken Nuggets w/Garlic Toast Carrot Coins Fresh Apple 1% White Milk	<b>24</b> Steak Fingers w/Roll Mashed Potatoes Chilled Peaches 1% White Milk	<b>25</b> Corn Dog Vegetable Sticks with Ranch Dressing Frosted Pear 1% White Milk
<b>28</b> Cheese Pizza Strips Fresh Broccoli w/Ranch Dressing 100% Fruit Juice-Frozen Treat 1% White Milk	<b>29</b> Taco Tuesday Golden Corn Banana 1% White Milk	<b>30</b> Breakfast for Lunch Pancakes w/Syrup Scrambled Eggs Hashbrowns Fresh Apple 1% White Milk	<b>31</b> Beef Ravioli w/Roll Winter Blend Veggies Strawberry Applesauce 1% White Milk	<b>Lunch: Free for Students</b> Our unit priced lunch consists of all 5 food components placed on tray. <b>Food Components:</b> Meat/Meat Alternate, Grain, Fruit, Vegetable, Milk. All lunch rolls, tortillas, pastas and other bread items contain at least 51% whole grain.



# TISD Pre-K Lunch Menu



# JANUARY



## Weekly Breakfast Menu

Monday	Tuesday	Wednesday	Thursday	Friday
Multi Grain Cheerios Cereal	Pancake Sausage Wrap	Eggo Mini Pancakes	French Toast Sticks	Whole Grain Rice Krispies Cereal
100% Apple Juice 1% White Milk	100% Orange Juice 1% White Milk	100% Grape Juice 1% White Milk	100% Apple Juice 1% White Milk	Raisins 1% White Milk

**Breakfast:  
Free for  
Students**

**Our unit priced breakfast includes  
all food items placed on the tray.  
All breakfast breads, cereals & pastries  
contain at least 51% whole grain.**



**All lunch rolls, tortillas, pastas and other  
bread items contain at least 51% whole grain.**

**Lunch:  
Free for  
Students**

**Our unit priced lunch consists of all 5 food components  
placed on the tray.**

**Food Components:  
Meat/Meat Alternate, Grain, Fruit, Vegetable, Milk  
1% white milk & fat free chocolate milk offered daily.**

In accordance with Federal civil rights law and U.S. Department of Agriculture (USDA) civil rights regulations and policies, the USDA, its Agencies, offices, and employees, and institutions participating in or administering USDA programs are prohibited from discriminating based on race, color, national origin, sex, disability, age, or reprisal or retaliation for prior civil rights activity in any program or activity conducted or funded by USDA. Persons with disabilities who require alternative means of communication for program information (e.g. Braille, large print, audiotape, American Sign Language, etc.), should contact the Agency (State or local) where they applied for benefits. Individuals who are deaf, hard of hearing or have speech disabilities may contact USDA through the Federal Relay Service at (800) 877-8339. Additionally, program information may be made available in languages other than English. To file a program complaint of discrimination, complete the USDA Program Discrimination Complaint Form, (AD-3027) found online at: [http://www.ascr.usda.gov/complaint\\_filing\\_cust.html](http://www.ascr.usda.gov/complaint_filing_cust.html), and at any USDA office, or write a letter addressed to USDA and provide in the letter all of the information requested in the form. To request a copy of the complaint form, call (866) 632-9992. Submit your completed form or letter to USDA by: (1) mail: U.S. Department of Agriculture, Office of the Assistant Secretary for Civil Rights, 1400 Independence Avenue, SW Washington, D.C. 20250-9410; (2) fax: (202) 690-7442; or (3) email: [program.intake@usda.gov](mailto:program.intake@usda.gov). This institution is an equal opportunity provider. PAYMENT PROCEDURES Money may be deposited into student accounts with cash, check, online at [www.schoolcafe.com](http://www.schoolcafe.com) OR through the School Cafe App

### STUDENT CHARGES (BORROWING/GRACE PERIOD)

Students may charge meals up to the value of two breakfasts and two lunches. An automated phone call occurs when a negative balance appears on a student's account. If a student account exhausts the grace period/charge limit, the student must select a peanut butter and jelly or toasted cheese sandwich entree for lunch and/or a cereal entrée for breakfast until the negative balance is paid. A la Carte items are not available for charging.



## TISD Pre-K Breakfast Menu