

Finding your MAC Address:

All MAC addresses should be 12 characters. They may be separated by colons in blocks of two.

Example:

CC3A613DF83B and CC:3A:61:3D:F8:3B are both valid MAC addresses.

Please consult a Technology Department Staff member if you encounter trouble with these steps.

Android Devices (Samsung Galaxy; others may differ slightly):

1. Go To Settings > More
2. Choose About Device
3. Choose Status
4. Find and record WiFi MAC address

iOS Devices

1. Go to Settings
2. Go to General
3. Go to About
4. Find Wi-Fi Address (near the bottom)

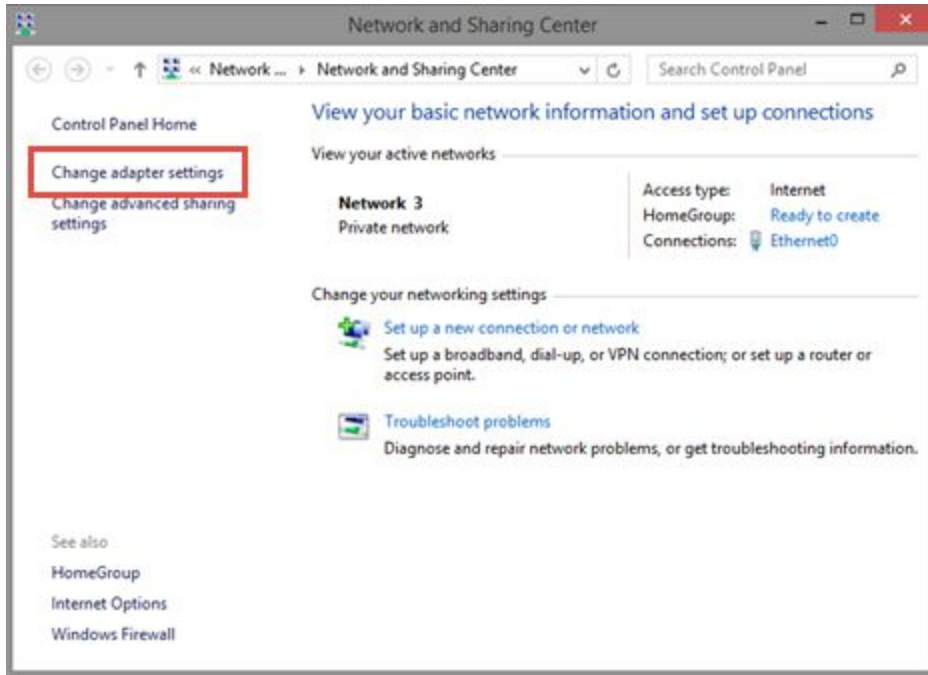
MacOS Devices

1. Click the Wi-Fi menu item and select "Open Network Preferences"
2. From the Network Preferences panel, select "Advanced..." at the bottom right.
3. MAC address is displayed at the bottom of the Advanced options as "Wi-Fi Address."

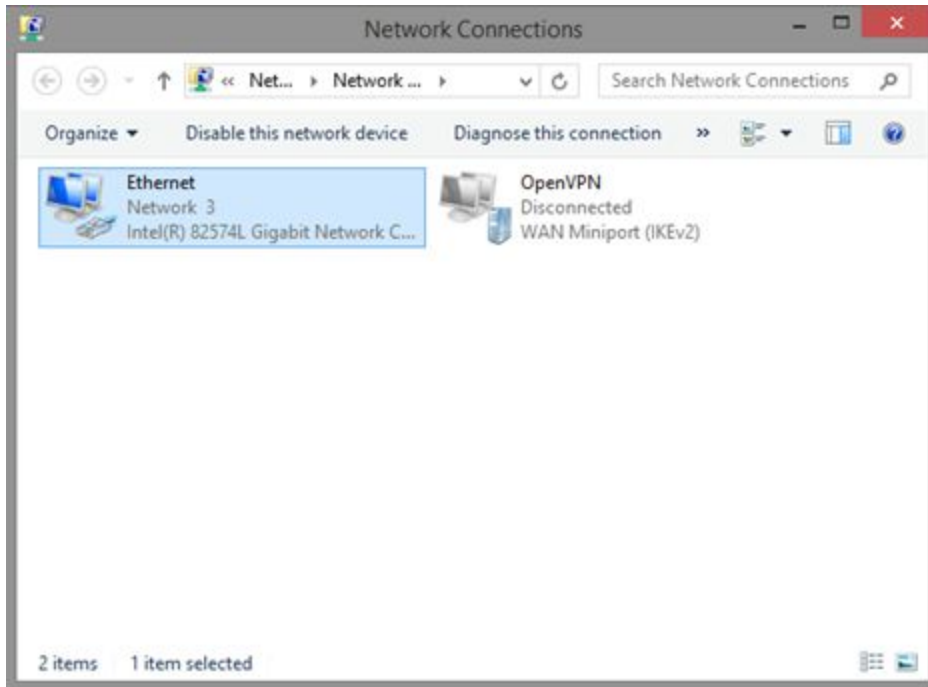
Windows 7/8/10 Devices

1. Open the *Network and Sharing Center*. It is found in the Control Panel or in the dock near the clock on Windows 7/8/10 devices.

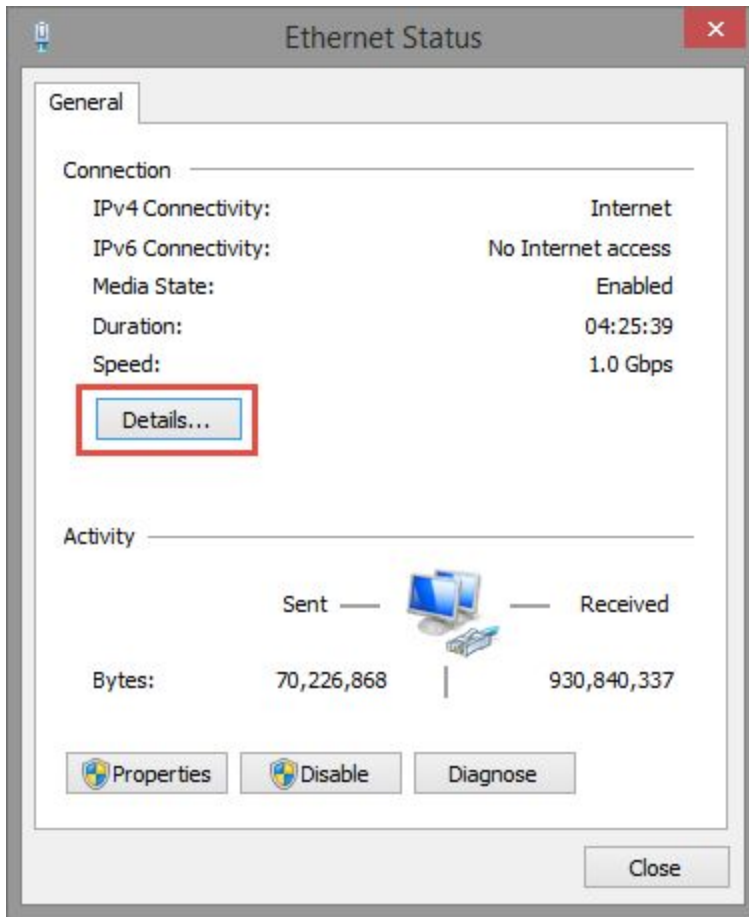
2. Click the *"Change adapter settings"* link on the left side of the *Network and Sharing Center*.



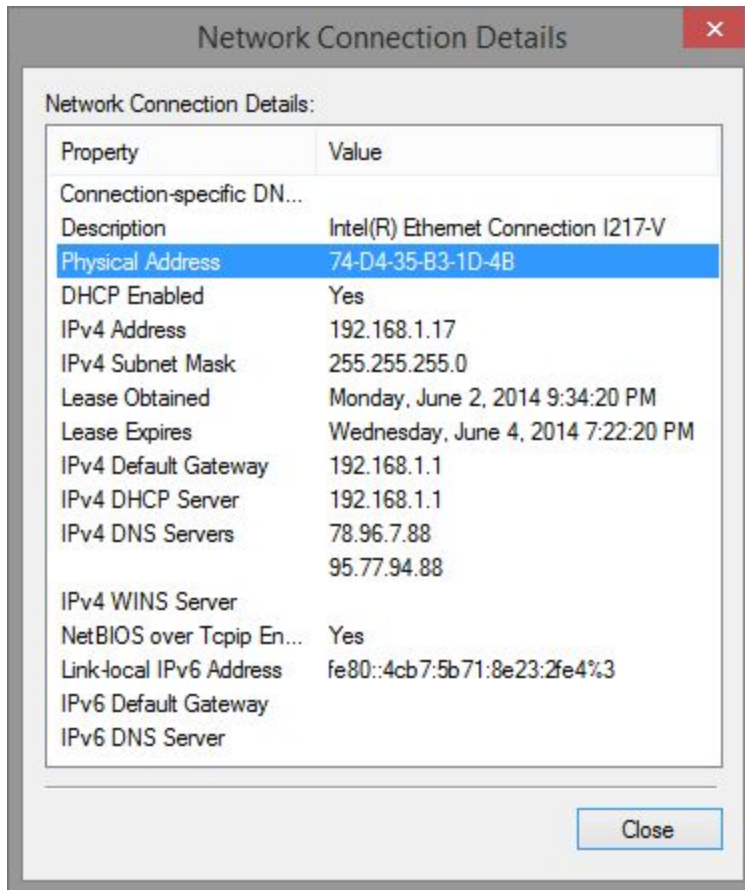
3. Then, double click or tap the Wi-Fi network adapter. (*depending on your PC, you may have 2 or more connections listed here*)



4. In the *Status* window of the network adapter, click or tap the *Details* button.



5. The MAC address is displayed in the *Physical Address* line, as shown below.



Chromebook - There are 2 methods available (choose one)

Using the Networks panel near the clock

1. Visit Google's [Connect to Wi-Fi page](#).
2. Scroll down to Find the Media Access Control (MAC) address. Click to expand the section, and follow the instructions.

Using the browser's "About System" diagnostic page

1. Open a browser window. In the address bar, type `chrome://system`, and press Enter.
2. Look for `ifconfig`, and then click the Expand... button next to it.
3. Look for the `wlan0` section (wireless address). In both sections, the MAC address will be listed as the Ethernet HWaddr.

