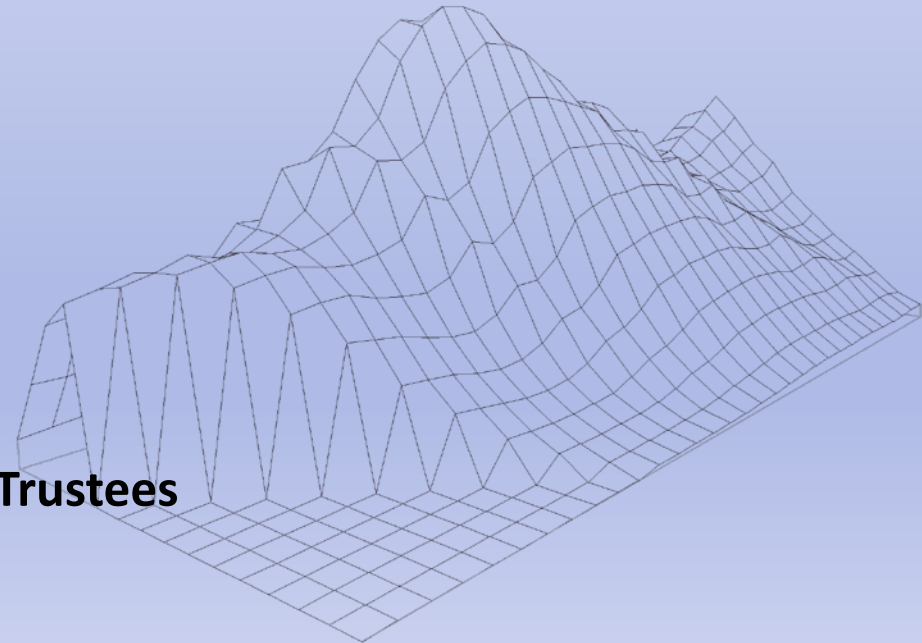


Redistricting

Kern High School District

Shelley Lapkoff, Ph.D.
Lapkoff & Gobalet
Demographic Research, Inc.
www.Demographers.com

May 7, 2018, Meeting of KHSD Board of Trustees



Agenda

- **Brief review of process and plans**
- **Plan 3 (new)**
- **Review of plan submitted from public (DHF)**
- **Appendix A: Summary and data tables for current trustee areas and all proposed plans**

Review of Process to Date

- **March 19, 2018 meeting**
 - Board received briefing by legal consultant concerning criteria for adjusting trustee area boundaries
 - Board received overview of the District's demographics and its current trustee areas
- **April 9, 2018 meeting**
 - Board received four plans from demographer
 - As part of the Board's agenda, DHF discussed a plan it developed
- **April 16, 2018 board hearing**
 - Board received further briefing and community input about redistricting process and plans

Review of Public Comment to Date

- Current plan has two majority LCVAP trustee areas – trustee area 2 and trustee area 3
- Trustee area 2 is effective at 60+% LCVAP (SWDB)
- Effective trustee area = 60+% LCVAP
- Unify Oildale
- Unify Lamont
- Unify Arvin, Greenfield, Lamont and Weedpatch together
- Unify Sikh community
- Project area of Building Healthy Communities South Kern (BHC) forms a community of interest
- Trustees live too close together

Review of Previously Proposed Plans by Demographers

- **Plan 1: Key features**
 - Oildale unified
 - Combines Shafter with Arvin, Weedpatch, and unified Lamont per Luna to create strong LCVAP TA3 – 57% (SWDB)/59% (LGDR)
 - 3 different adjustments shown for plan (Plan 1, v1; Plan 1a, v1; Plan 1, v2)
- **Plan 2: Key features**
 - Oildale unified; Lamont unified
 - Strengthened LCVAP in TA3 - 57% (SWDB)/56% (LGDR)

New Plan 3

Developed in consideration of the following:

- **Responsive to public comment**
- **Consistent with criteria adopted by Board**

Plan 3 (new)

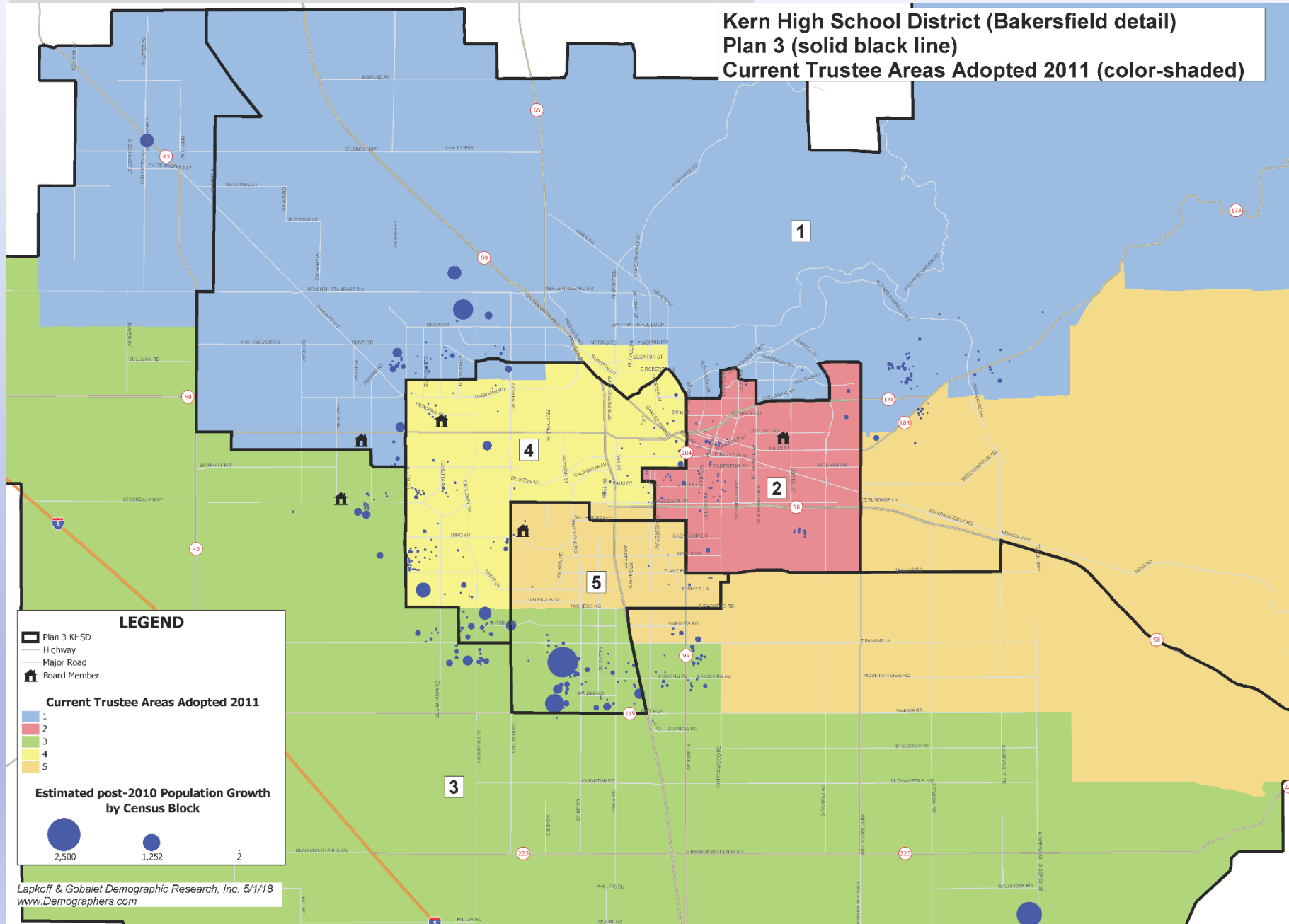
- **Two strong LCVAP trustee areas**
- **Trustee Area 3 – 61% LCVAP**
 - **Latino areas in Shafter join with Lamont/Arvin per Luna**
 - **Unified Building Healthy Communities (BHC) project area in TA3**
- **Trustee area 2 remains unchanged, as all agree it is “effective”**
- **Incumbents separated and core areas intact**

Plan 3: Criteria Met

- **Legal requirement: Balance population based on 2010 Census data**
 - **Utilize population growth estimates since 2010 to help reduce adjustments needed after 2020 Census**
- **Legal requirement: Consider Latino Citizen Voting Age Populations (LCVAP) when drawing trustee areas**
- **TA3 unifies all BHC project area**
- **Unifies Greenfield, Lamont, Arvin, and Weedpatch in one trustee area**
- **Consistent with Luna (historical farmworker COI), most of populated Shafter unified with Arvin, etc.**
- **Unifies Oildale in one trustee area**
- **Uses major geographic and topographical features for boundary lines**
- **Observes compactness, contiguity, integrity of territory**
- **Works within structure of current trustee areas, that is, cores of existing trustee areas (to implement criteria)**
- **Maintains incumbents with constituents to the extent possible consistent with above goals**

Plan 3– Bakersfield Detail

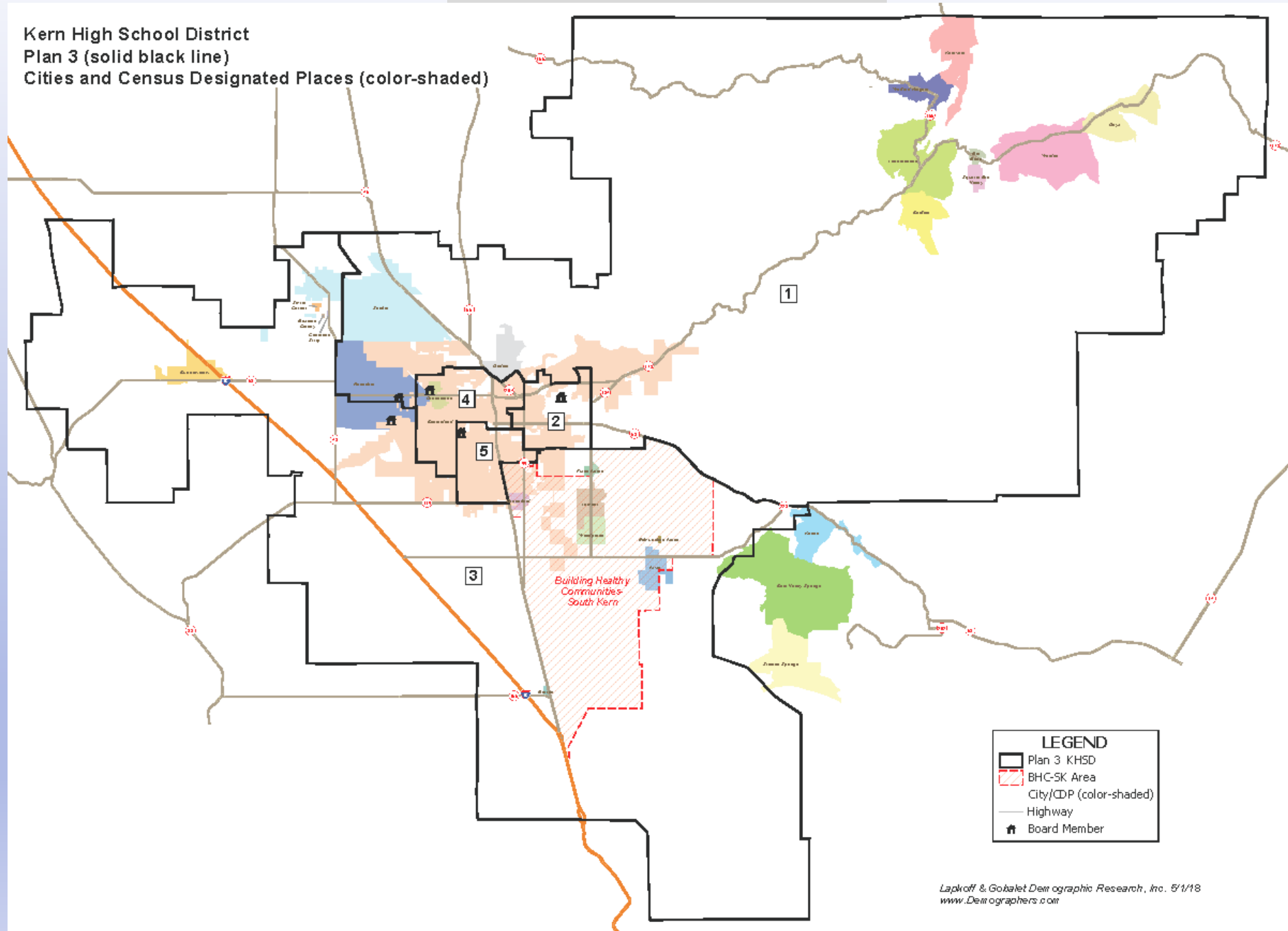
Kern High School District (Bakersfield detail)
 Plan 3 (solid black line)
 Current Trustee Areas Adopted 2011 (color-shaded)



Lapkoff & Gobalet Demographic Research, Inc. 5/1/18
www.Demographers.com

Plan 3

Kern High School District
Plan 3 (solid black line)
Cities and Census Designated Places (color-shaded)



Plan 3 data

Plan 3

Census 2010 Population Balance (equal population requirement)

Trustee Area	Population	Deviation	Percent Deviation
1	123,160	3,890	3.3%
2	120,098	828	0.7%
3	117,124	-2,146	-1.8%
4	115,236	-4,034	-3.4%
5	120,733	1,463	1.2%
Total	596,351		6.6%

Most populous trustee area	123,160
Least populous trustee area	115,236
Difference	7,924
Ideal Trustee Area Size	119,270
Plan's Percent Deviation	6.6%

Estimated 2017 Population Balance*

Trustee Area	Population	Deviation	Percent Deviation
1	132,521	5,549	4.4%
2	121,737	-5,235	-4.1%
3	127,141	169	0.1%
4	122,793	-4,179	-3.3%
5	130,668	3,696	2.9%
Total	634,861		8.5%

Most populous trustee area	132,521
Least populous trustee area	121,737
Difference	10,784
Ideal Trustee Area Size	126,972
Plan's Percent Deviation	8.5%

*Estimate of population from new housing: number of new housing units multiplied by average household size of 3.17 (senior units multiplied by 1.5)

Percent of Trustee Area's Population that was Hispanic/Latino (Federal Voting Rights Act compliance)

Census 2010 Total Population	Census 2010 Voting Age Population (VAP)	LGDR Estimated Citizen Voting Age Population (CVAP)*	SWDB Estimated Citizen Voting Age Population (CVAP)**	SWDB Registered voters 2010	SWDB Registered voters 2016
26%	22%	16%	21%	15%	17%
72%	67%	58%	60%	49%	60%
74%	69%	61%	61%	49%	54%
29%	25%	19%	26%	18%	21%
50%	44%	36%	41%	30%	38%
50%	45%	35%	39%	29%	37%

* 2010 Census population 18+ multiplied by citizenship rates by ethnicity, as estimated in the 2012-16 American Community Survey (ACS)

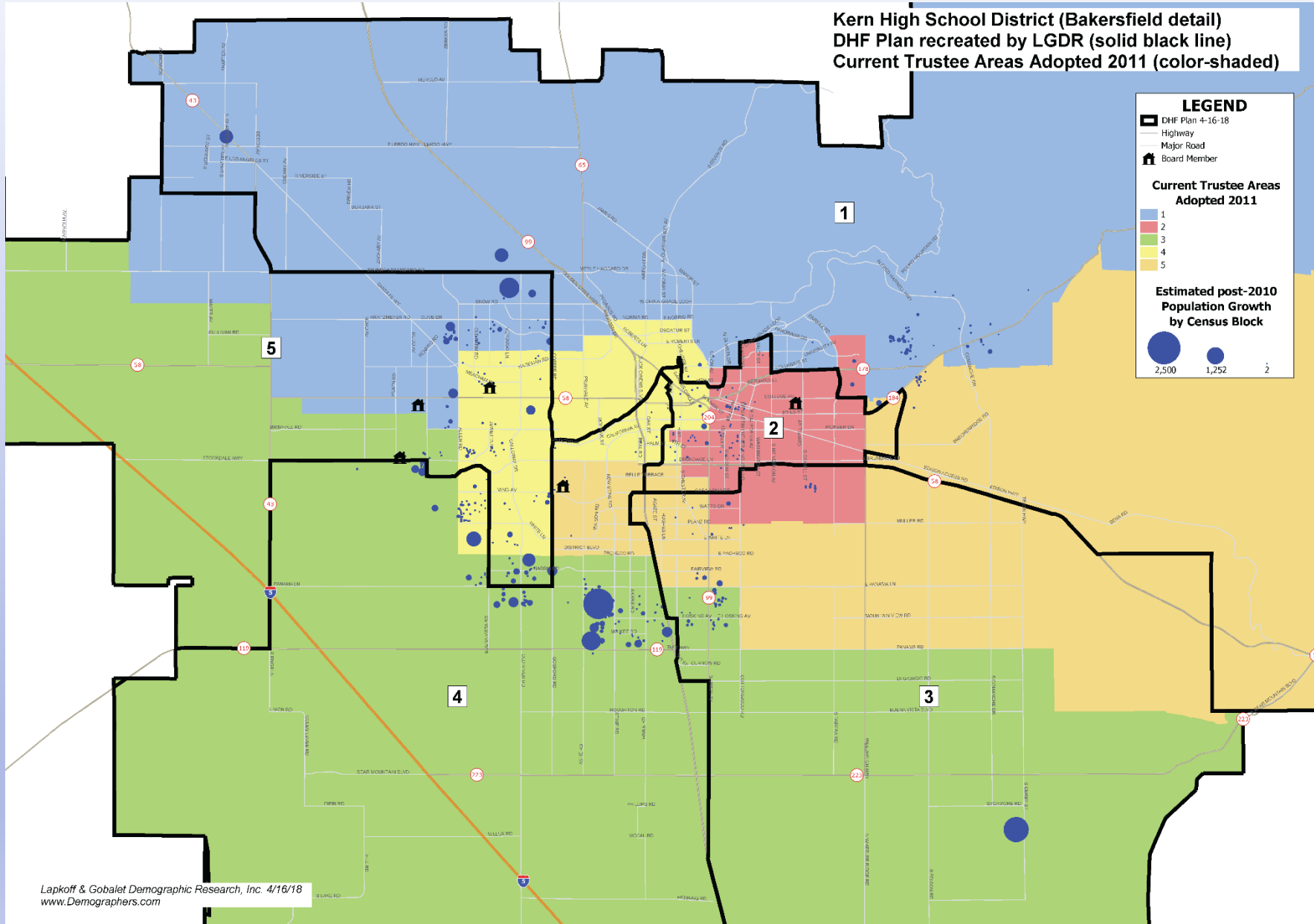
** State-wide Database of 2012-16 citizenship rates, based on direct survey results from the 2012-16 American Community Survey (ACS)

Dolores Huerta Foundation Plan

Analyzed by Demographer

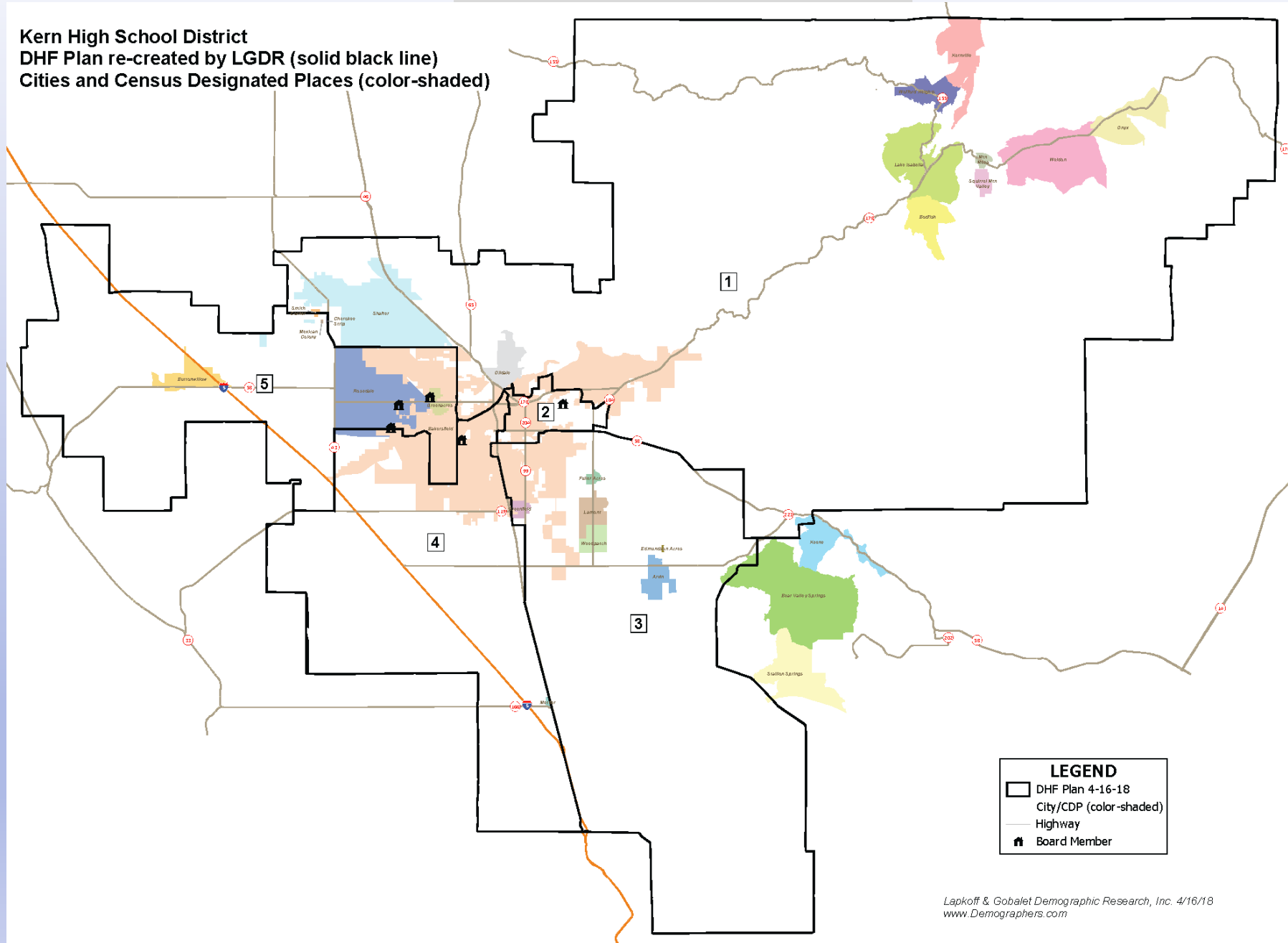
- **Meets 2010 legal population equality requirement**
- **Provides two strong LCVAP trustee areas**
- **Arvin and Shafter Latino communities were not combined in DHF plan to unify historical Farmworker COI per Luna**
- **Changes to boundaries for TA2 at times following no particularly recognizable streets or geographical features**
- **Incumbents separated from significant portions of current constituents**
- **3 incumbents unnecessarily combined in one trustee area**

Plan DHF – Detail map



Plan DHF

**Kern High School District
DHF Plan re-created by LGDR (solid black line)
Cities and Census Designated Places (color-shaded)**



Plan DHF data

Plan DHF

Census 2010 Population Balance (equal population requirement)

Trustee Area	Population	Deviation	Percent Deviation
1	123,249	3,979	3.3%
2	124,080	4,810	4.0%
3	120,412	1,142	1.0%
4	114,272	-4,998	-4.2%
5	114,338	-4,932	-4.1%
Total	596,351		8.2%

Most populous trustee area	124,080
Least populous trustee area	114,272
Difference	9,808
Ideal Trustee Area Size	119,270
Plan's Percent Deviation	8.2%

Estimated 2017 Population Balance*

Trustee Area	Population	Deviation	Percent Deviation
1	128,786	1,814	1.4%
2	125,347	-1,625	-1.3%
3	125,381	-1,591	-1.3%
4	130,962	3,990	3.1%
5	124,384	-2,588	-2.0%
Total	634,861		5.2%

Most populous trustee area	130,962
Least populous trustee area	124,384
Difference	6,578
Ideal Trustee Area Size	126,972
Plan's Percent Deviation	5.2%

*Estimate of population from new housing: number of new housing units multiplied by average household size of 3.17 (senior units multiplied by 1.5)

Percent of Trustee Area's Population that was Hispanic/Latino (Federal Voting Rights Act compliance)

Census 2010 Total Population	Census 2010 Voting Age Population (VAP)	LGDR Estimated Citizen Voting Age Population (CVAP)*	SWDB Estimated Citizen Voting Age Population (CVAP)**	SWDB Registered voters 2010	SWDB Registered voters 2016
33%	28%	21%	25%	18%	25%
72%	67%	58%	60%	50%	57%
76%	72%	63%	63%	52%	60%
41%	36%	28%	36%	24%	31%
27%	23%	17%	24%	17%	19%
50%	45%	35%	39%	29%	37%

* 2010 Census population 18+ multiplied by citizenship rates by ethnicity, as estimated in the 2012-16 American Community Survey (ACS)

** State-wide Database of 2012-16 citizenship rates, based on direct survey results from the 2012-16 American Community Survey (ACS)

Appendix: Summary and Date Tables for All Plans

- Summary
- Current trustee areas
- Plan 1, v1
- Plan 1a, v1
- Plan 1, v2
- Plan 2
- Plan 3
- Plan DHF (submitted by Dolores Huerta Foundation)

Comparison of All Plans' Characteristics

Summary of Plan Characteristics

	Current Plan	Plan 1, Version 1	Plan 1a, Version 1	Plan 1, Version 2	Plan 2	Plan 3	Plan DHF
Key Feature		Shafter moves to TA3	Industrial area and new housing in SE Shafter in TA1 (NW Bakersfield); remainder in TA3	Shafter moves to TA3	Shafter remains in TA1, other minimal changes	Latino area of Shafter and BHC area included in TA3	
LGDR LCVAP	TA2 = 58% TA3 = 51%	TA2 = 60% TA3 = 59%	TA2 = 60% TA3 = 59%	TA2 = 59% TA3 = 59%	TA2 = 59% TA3 = 56%	TA2 = 58% TA3 = 61%	TA2 = 58% TA3 = 63%
SWDB LCVAP	TA2 = 60% TA3 = 51%	TA2 = 62% TA3 = 57%	TA2 = 62% TA3 = 57%	TA2 = 61% TA3 = 57%	TA2 = 61% TA3 = 57%	TA2 = 60% TA3 = 61%	TA2 = 60% TA3 = 63%
SWDB 2016 Registered Voters, estimated share of Latinos	TA2 = 60% TA3 = 46%	TA2 = 60% TA3 = 52%	TA2 = 60%; TA3 = 52%	TA2 = 60% TA3 = 52%	TA2 = 60% TA3 = 50%	TA2 = 60% TA3 = 54%	TA2 = 57% TA3 = 60%
2010 Total Population Deviation	1.7%	8.6%	8.6%	8.7%	6.6%	6.6%	8.2%
2017 Estimated Total Population Deviation	16.4%	6.7%	7.5%	6.0%	7.4%	8.5%	5.2%
# Precincts split (1,418 precincts in KHSD)	n.a.	5	7	7	4	7	6
2010 Total Population moved		89,092	88,949	85,037	82,771	122,068	330,384
Incumbents and cores of trustee areas maintained	n.a.	Yes	Yes	Yes	Yes	Yes	No

Current Plan data

Current Plan (2011)

Census 2010 Population Balance (equal population requirement)

Trustee Area	Population	Deviation	Percent Deviation
1	118,940	-330	-0.3%
2	120,098	828	0.7%
3	120,401	1,131	0.9%
4	118,351	-919	-0.8%
5	118,561	-709	-0.6%
Total	596,351		1.7%

Most populous trustee area	120,401
Least populous trustee area	118,351
Difference	2,050
Ideal Trustee Area Size	119,270
Plan's Percent Deviation	1.7%

Estimated 2017 Population Balance*

Trustee Area	Population	Deviation	Percent Deviation
1	128,921	1,949	1.5%
2	121,737	-5,235	-4.1%
3	140,897	13,925	11.0%
4	123,242	-3,730	-2.9%
5	120,064	-6,909	-5.4%
Total	634,861		16.4%

Most populous trustee area	140,897
Least populous trustee area	120,064
Difference	20,833
Ideal Trustee Area Size	126,972
Plan's Percent Deviation	16.4%

*Estimate of population from new housing: number of new housing units multiplied by average household size of 3.17 (senior units multiplied by 1.5)

Percent of Trustee Area's Population that was Hispanic/Latino (Federal Voting Rights Act compliance)

Census 2010 Total Population	Census 2010 Voting Age Population (VAP)	LGDR Estimated Citizen Voting Age Population (CVAP)*	SWDB Estimated Citizen Voting Age Population (CVAP)**	SWDB Registered voters 2010	SWDB Registered voters 2016
32%	27%	20%	25%	18%	21%
72%	67%	58%	60%	49%	60%
64%	59%	51%	51%	41%	46%
27%	23%	17%	24%	17%	20%
55%	49%	40%	44%	32%	41%
50%	45%	35%	39%	29%	37%

* 2010 Census population 18+ multiplied by citizenship rates by ethnicity, as estimated in the 2012-16 American Community Survey (ACS)

** State-wide Database of 2012-16 citizenship rates, based on direct survey results from the 2012-16 American Community Survey (ACS)

Plan 1, v1 data

Plan 1, v1

Census 2010 Population Balance (equal population requirement)

Trustee Area	Population	Deviation	Percent Deviation
1	122,977	3,707	3.1%
2	123,794	4,524	3.8%
3	113,748	-5,522	-4.6%
4	113,483	-5,787	-4.9%
5	122,349	3,079	2.6%
Total	596,351		8.6%

Most populous trustee area	123,794
Least populous trustee area	113,483
Difference	10,311
Ideal Trustee Area Size	119,270
Plan's Percent Deviation	8.6%

Estimated 2017 Population Balance*

Trustee Area	Population	Deviation	Percent Deviation
1	131,978	5,006	3.9%
2	125,265	-1,707	-1.3%
3	130,174	3,202	2.5%
4	123,494	-3,478	-2.7%
5	123,950	-3,022	-2.4%
Total	634,861		6.7%

Most populous trustee area	131,978
Least populous trustee area	123,494
Difference	8,484
Ideal Trustee Area Size	126,972
Plan's Percent Deviation	6.7%

*Estimate of population from new housing: number of new housing units multiplied by average household size of 3.17 (senior units multiplied by 1.5)

Percent of Trustee Area's Population that was Hispanic/Latino (Federal Voting Rights Act compliance)

Census 2010 Total Population	Census 2010 Voting Age Population (VAP)	LGDR Estimated Citizen Voting Age Population (CVAP)*	SWDB Estimated Citizen Voting Age Population (CVAP)**	SWDB Registered voters 2010	SWDB Registered voters 2016
24%	20%	15%	21%	15%	15%
74%	69%	60%	62%	51%	60%
71%	67%	59%	57%	47%	52%
30%	26%	19%	27%	18%	22%
52%	46%	37%	41%	30%	38%
50%	45%	35%	39%	29%	37%

* 2010 Census population 18+ multiplied by citizenship rates by ethnicity, as estimated in the 2012-16 American Community Survey (ACS)

** State-wide Database of 2012-16 citizenship rates, based on direct survey results from the 2012-16 American Community Survey (ACS)

Plan 1a, v1 data

Plan 1a, v1

Census 2010 Population Balance (equal population requirement)

Trustee Area	Population	Deviation	Percent Deviation
1	123,120	3,850	3.2%
2	123,794	4,524	3.8%
3	113,605	-5,665	-4.7%
4	113,483	-5,787	-4.9%
5	122,349	3,079	2.6%
Total	596,351		8.6%

Most populous trustee area	123,794
Least populous trustee area	113,483
Difference	10,311
Ideal Trustee Area Size	119,270
Plan's Percent Deviation	8.6%

Estimated 2017 Population Balance*

Trustee Area	Population	Deviation	Percent Deviation
1	133,061	6,089	4.8%
2	125,265	-1,707	-1.3%
3	129,091	2,119	1.7%
4	123,494	-3,478	-2.7%
5	123,950	-3,022	-2.4%
Total	634,861		7.5%

Most populous trustee area	133,061
Least populous trustee area	123,494
Difference	9,567
Ideal Trustee Area Size	126,972
Plan's Percent Deviation	7.5%

*Estimate of population from new housing: number of new housing units multiplied by average household size of 3.17 (senior units multiplied by 1.5)

Percent of Trustee Area's Population that was Hispanic/Latino (Federal Voting Rights Act compliance)

Census 2010 Total Population	Census 2010 Voting Age Population (VAP)	LGDR Estimated Citizen Voting Age Population (CVAP)*	SWDB Estimated Citizen Voting Age Population (CVAP)**	SWDB Registered voters 2010	SWDB Registered voters 2016
24%	20%	15%	21%	15%	15%
74%	69%	60%	62%	51%	60%
72%	67%	59%	57%	47%	52%
30%	26%	19%	27%	18%	22%
52%	46%	37%	41%	30%	38%
50%	45%	35%	39%	29%	37%

* 2010 Census population 18+ multiplied by citizenship rates by ethnicity, as estimated in the 2012-16 American Community Survey (ACS)

** State-wide Database of 2012-16 citizenship rates, based on direct survey results from the 2012-16 American Community Survey (ACS)

Plan 1, v2 data

Plan 1, v2

Census 2010 Population Balance (equal population requirement)

Trustee Area	Population	Deviation	Percent Deviation
1	115,072	-4,198	-3.5%
2	124,106	4,836	4.1%
3	113,748	-5,522	-4.6%
4	121,151	1,881	1.6%
5	122,274	3,004	2.5%
Total	596,351		8.7%

Most populous trustee area	124,106
Least populous trustee area	113,748
Difference	10,358
Ideal Trustee Area Size	119,270
Plan's Percent Deviation	8.7%

Estimated 2017 Population Balance*

Trustee Area	Population	Deviation	Percent Deviation
1	123,496	-3,476	-2.7%
2	125,739	-1,234	-1.0%
3	130,174	3,202	2.5%
4	131,162	4,190	3.3%
5	124,290	-2,682	-2.1%
Total	634,861		6.0%

Most populous trustee area	131,162
Least populous trustee area	123,496
Difference	7,666
Ideal Trustee Area Size	126,972
Plan's Percent Deviation	6.0%

*Estimate of population from new housing: number of new housing units multiplied by average household size of 3.17 (senior units multiplied by 1.5)

Percent of Trustee Area's Population that was Hispanic/Latino (Federal Voting Rights Act compliance)

Census 2010 Total Population	Census 2010 Voting Age Population (VAP)	LGDR Estimated Citizen Voting Age Population (CVAP)*	SWDB Estimated Citizen Voting Age Population (CVAP)**	SWDB Registered voters 2010	SWDB Registered voters 2016
22%	19%	13%	19%	14%	13%
73%	68%	59%	61%	50%	60%
71%	67%	59%	57%	47%	52%
31%	27%	20%	27%	19%	23%
53%	47%	38%	42%	31%	39%
50%	45%	35%	39%	29%	37%

* 2010 Census population 18+ multiplied by citizenship rates by ethnicity, as estimated in the 2012-16 American Community Survey (ACS)

** State-wide Database of 2012-16 citizenship rates, based on direct survey results from the 2012-16 American Community Survey (ACS)

Plan 2 data

Plan 2

Census 2010 Population Balance (equal population requirement)

Trustee Area	Population	Deviation	Percent Deviation
1	118,322	-948	-0.8%
2	122,924	3,654	3.1%
3	115,089	-4,181	-3.5%
4	119,600	330	0.3%
5	120,416	1,146	1.0%
Total	596,351		6.6%

Most populous trustee area	122,924
Least populous trustee area	115,089
Difference	7,835
Ideal Trustee Area Size	119,270
Plan's Percent Deviation	6.6%

Estimated 2017 Population Balance*

Trustee Area	Population	Deviation	Percent Deviation
1	126,947	-25	0.0%
2	124,557	-2,416	-1.9%
3	132,348	5,376	4.2%
4	128,105	1,133	0.9%
5	122,904	-4,068	-3.2%
Total	634,861		7.4%

Most populous trustee area	132,348
Least populous trustee area	122,904
Difference	9,444
Ideal Trustee Area Size	126,972
Plan's Percent Deviation	7.4%

*Estimate of population from new housing: number of new housing units multiplied by average household size of 3.17 (senior units multiplied by 1.5)

Percent of Trustee Area's Population that was Hispanic/Latino (Federal Voting Rights Act compliance)

Census 2010 Total Population	Census 2010 Voting Age Population (VAP)	LGDR Estimated Citizen Voting Age Population (CVAP)*	SWDB Estimated Citizen Voting Age Population (CVAP)**	SWDB Registered voters 2010	SWDB Registered voters 2016
32%	27%	20%	24%	18%	23%
73%	68%	59%	61%	50%	60%
69%	64%	56%	57%	44%	50%
28%	24%	18%	25%	17%	20%
50%	44%	35%	39%	28%	36%
50%	45%	35%	39%	29%	37%

* 2010 Census population 18+ multiplied by citizenship rates by ethnicity, as estimated in the 2012-16 American Community Survey (ACS)

** State-wide Database of 2012-16 citizenship rates, based on direct survey results from the 2012-16 American Community Survey (ACS)

Plan 3 data

Plan 3

Census 2010 Population Balance (equal population requirement)

Trustee Area	Population	Deviation	Percent Deviation
1	123,160	3,890	3.3%
2	120,098	828	0.7%
3	117,124	-2,146	-1.8%
4	115,236	-4,034	-3.4%
5	120,733	1,463	1.2%
Total	596,351		6.6%

Most populous trustee area	123,160
Least populous trustee area	115,236
Difference	7,924
Ideal Trustee Area Size	119,270
Plan's Percent Deviation	6.6%

Estimated 2017 Population Balance*

Trustee Area	Population	Deviation	Percent Deviation
1	132,521	5,549	4.4%
2	121,737	-5,235	-4.1%
3	127,141	169	0.1%
4	122,793	-4,179	-3.3%
5	130,668	3,696	2.9%
Total	634,861		8.5%

Most populous trustee area	132,521
Least populous trustee area	121,737
Difference	10,784
Ideal Trustee Area Size	126,972
Plan's Percent Deviation	8.5%

*Estimate of population from new housing: number of new housing units multiplied by average household size of 3.17 (senior units multiplied by 1.5)

Percent of Trustee Area's Population that was Hispanic/Latino (Federal Voting Rights Act compliance)

Census 2010 Total Population	Census 2010 Voting Age Population (VAP)	LGDR Estimated Citizen Voting Age Population (CVAP)*	SWDB Estimated Citizen Voting Age Population (CVAP)**	SWDB Registered voters 2010	SWDB Registered voters 2016
26%	22%	16%	21%	15%	17%
72%	67%	58%	60%	49%	60%
74%	69%	61%	61%	49%	54%
29%	25%	19%	26%	18%	21%
50%	44%	36%	41%	30%	38%
50%	45%	35%	39%	29%	37%

* 2010 Census population 18+ multiplied by citizenship rates by ethnicity, as estimated in the 2012-16 American Community Survey (ACS)

** State-wide Database of 2012-16 citizenship rates, based on direct survey results from the 2012-16 American Community Survey (ACS)

Plan DHF data

Plan DHF

Census 2010 Population Balance (equal population requirement)

Trustee Area	Population	Deviation	Percent Deviation
1	123,249	3,979	3.3%
2	124,080	4,810	4.0%
3	120,412	1,142	1.0%
4	114,272	-4,998	-4.2%
5	114,338	-4,932	-4.1%
Total	596,351		8.2%

Most populous trustee area	124,080
Least populous trustee area	114,272
Difference	9,808
Ideal Trustee Area Size	119,270
Plan's Percent Deviation	8.2%

Estimated 2017 Population Balance*

Trustee Area	Population	Deviation	Percent Deviation
1	128,786	1,814	1.4%
2	125,347	-1,625	-1.3%
3	125,381	-1,591	-1.3%
4	130,962	3,990	3.1%
5	124,384	-2,588	-2.0%
Total	634,861		5.2%

Most populous trustee area	130,962
Least populous trustee area	124,384
Difference	6,578
Ideal Trustee Area Size	126,972
Plan's Percent Deviation	5.2%

*Estimate of population from new housing: number of new housing units multiplied by average household size of 3.17 (senior units multiplied by 1.5)

Percent of Trustee Area's Population that was Hispanic/Latino (Federal Voting Rights Act compliance)

Census 2010 Total Population	Census 2010 Voting Age Population (VAP)	LGDR Estimated Citizen Voting Age Population (CVAP)*	SWDB Estimated Citizen Voting Age Population (CVAP)**	SWDB Registered voters 2010	SWDB Registered voters 2016
33%	28%	21%	25%	18%	25%
72%	67%	58%	60%	50%	57%
76%	72%	63%	63%	52%	60%
41%	36%	28%	36%	24%	31%
27%	23%	17%	24%	17%	19%
50%	45%	35%	39%	29%	37%

* 2010 Census population 18+ multiplied by citizenship rates by ethnicity, as estimated in the 2012-16 American Community Survey (ACS)

** State-wide Database of 2012-16 citizenship rates, based on direct survey results from the 2012-16 American Community Survey (ACS)