



# SCHOOL LUNCH PROGRAM

TotPot is an artisanal "kids' kitchen" dedicated to creating and cooking healthy home-style farm-to-pot meals exclusively for children. We believe in freshly-prepared food made with organic produce and free of any harmful additives and preservative.

## WHY TOTPOT?

All Natural & **Organic** ingredients,  
Hand Crafted, and **Locally Sourced**  
to **Ensure** the **healthiest** future for our kids

- \*Natural & Local Ingredients
- \*Antibiotic and Hormone Free Poultry and Dairy
- \*No High Fructose Corn Syrup
- \*No preservatives

Our mission at Totpot is first and foremost, to help teach kids how to "eat healthy from the beginning" by offering them delicious food, crafted by our own chefs and approved by certified nutritionists. Totpot takes immense pride in being truly a local and hassle-free solution to providing kids at school with healthy and tasty lunches.

## OUR MENU >>>

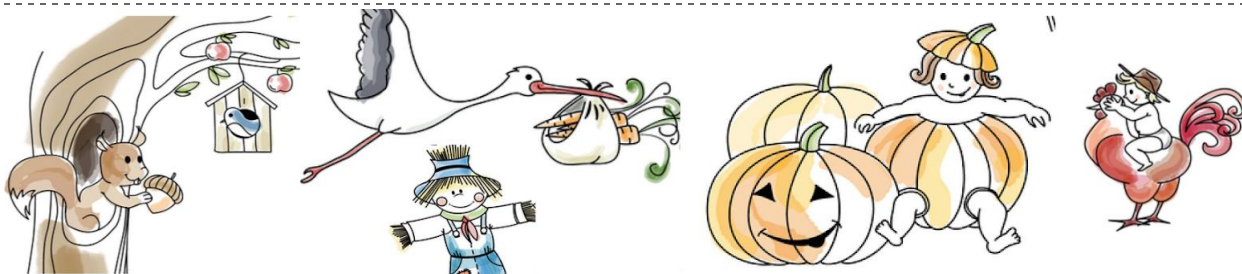
### Combo Menu

(Entree + Side + Fruit + Snack + Water)  
\$6.95 Regular \$7.95 Large  
Choose from 3 entrees, 4 sides, & 2  
Fruit options daily

### + A La Carte Menu

(\*A la Carte Pricing dependent on items purchased)  
Hot & Cold Entrees | Salads | Sandwiches |  
Wraps | Sushi Rolls | Snacks | Smoothies | Drinks |  
Desserts | **Something for everyone!**

Order **Online!** 





# How To Order Lunches

**Registration Start Date: Monday, August 13th**

[totpot.boonli.com](http://totpot.boonli.com)

Go to: [totpot.boonli.com](http://totpot.boonli.com) (please bookmark this page)

Click Create an Account:  
Your School's Password is Valley17

Enter information and click Submit  
Enter information for your student, Add Profile  
Repeat for any additional students  
Click I'm Done and Sign In

You are now ready to begin ordering!

**Order Deadline: 24hrs before day of service**

**If you need lunch for a Wednesday, order must be placed by midnight Monday**

Program Information available online once you are logged in to your account

Food & Policy Questions (Food questions/concerns including menu offerings,  
Missed/Late Orders, Credits, Changes/Cancellations) email [admin@totpot.com](mailto:admin@totpot.com) or call  
844-4-TOTPOT | 310-692-9641

Technical Support (help navigating the site) email [info@totpot.com](mailto:info@totpot.com)

**Registration Start Date: Monday, August 13th**



# Program Information

## Welcome!

We are delighted to provide you with our new online ordering experience. Ordering your child's school meals has become even easier.

Our commitment to providing the highest quality, most delicious food has always been and will continue to be our number one priority -- but now with more convenience and flexibility for you.

## Program Questions

For questions regarding Food or Policy, including Missed/Late Orders, Credits, and Changes/Cancellations, please contact your Program Administrator directly: [admin@totpot.com](mailto:admin@totpot.com)

## Ordering Schedule

Menus are posted monthly. Orders must be placed 1 full day in advance. Example: to order for Wednesday, orders must be placed by midnight Monday. We encourage you to order lunches a month at a time. You may also order daily or weekly instead.

## Payment Information

The program accepts payment by Debit Card or Credit Card: Visa, MasterCard, Discover

Be sure to proceed to checkout and process your payment. Orders that are left in the shopping cart will NOT be processed and your student(s) will not be included in the lunch service.

Card Payments: After entering your card information, do not close your browser prior to receiving the confirmation display or your order may be interrupted and not fully processed. If a confirmation page is not displayed, do not attempt to enter payment again, as this may result in duplicate charges.

## Dietary Restrictions

We accommodate most dietary restrictions. If your child has a dietary restriction please contact Totpot via email [info@totpot.com](mailto:info@totpot.com) upon registration.

## Credit Card Transaction

The details of all transactions made can be reviewed online by clicking the 'Order History' tab on the side menu located at the homepage. For any questions regarding your credit card transaction, please contact [info@totpot.com](mailto:info@totpot.com)

## Forgot To Place Your Order

After the ordering period has closed, late orders will be accepted at the discretion of Totpot administrators. If you have forgotten to place your order please call or email us as early as possible. We will do our best to accommodate you. There is a \$2.00 late fee for all late lunch orders. For any questions regarding this policy, please contact us [admin@totpot.com](mailto:admin@totpot.com).

## Credit For A Missed Lunch

Credits are not applied due to illness, as we have already purchased the meal for you.

## Be Sure To Get Email Notifications

Make sure you have an email address in your profile to receive notifications including ordering reminders, important communication, confirmations, password resets AND add [noreply@boonli.com](mailto:noreply@boonli.com) to your email safe list.