

Beacon Academy School Profile

2018-19



Our Mission

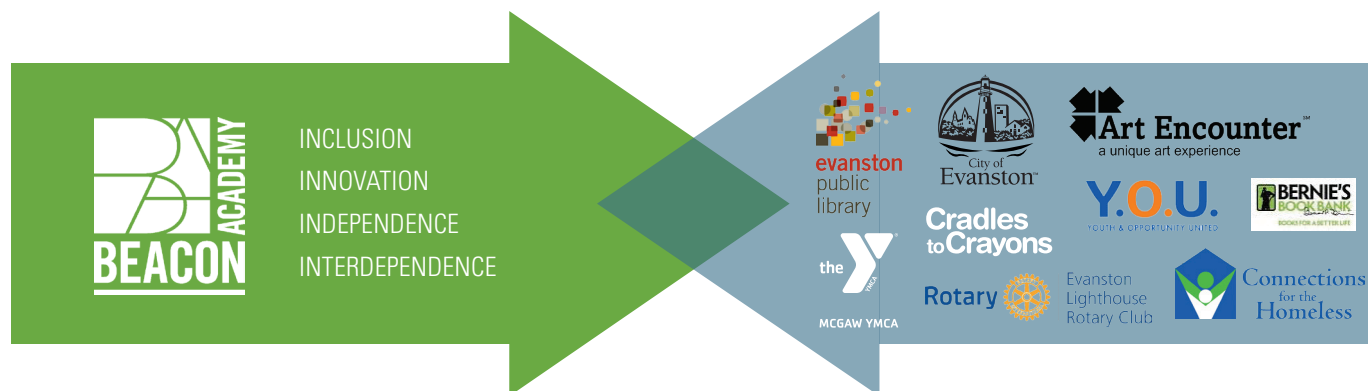
Beacon Academy offers an innovative and challenging education based on Montessori principles that places a priority on experiential learning, entrepreneurial thinking, and in-depth interdisciplinary studies. Beacon students will master the skills, knowledge, and habits of mind necessary to meaningfully contribute to a complex and diverse world with compassion and confidence.

What is a Montessori High School?

Beacon Academy offers a rigorous college preparatory curriculum, including 13 International Baccalaureate courses. The structure and delivery of this course content is informed by central tenets of the Montessori method: mixed age groupings to foster peer learning and support, uninterrupted work time, guided choice in sequencing and assessment, and an emphasis on project-based learning in the context of a prepared environment through collaboration between teacher and student. All Beacon Academy courses are taught at the Honors level. The Montessori method celebrates egalitarianism; Beacon Academy does not rank its students, bestow individual awards or honors, or provide elected leadership positions.

Partners in Learning

Moving beyond the traditional concept of “classroom,” students at Beacon Academy work in partnership with dozens of local and global organizations to connect their school work with the outside world and address problems of far-reaching significance. Beacon is a community school in the strongest sense of the word with Evanston and greater Chicago serving as our extended campus.



IB World School, Diploma Programme

Beacon Academy was named an IB World School and began offering an IB curriculum during the 2016-17 school year. In addition to the courses listed on this school profile, Beacon Academy offers Theory of Knowledge (TOK); Creativity, Action, and Service (CAS), and the Extended Essay (EE) to all IB Diploma candidates. Beacon also allows IB diploma candidates to take IB courses not offered on site through Pamoja, an accredited online provider of IB courses. Coursework completed through Pamoja is indicated on the student transcript, and the grade is not factored into Beacon Academy cumulative averages.

Community Engagement and Mindfulness

Social and emotional development are hallmarks of the Montessori method. Daily mindfulness practices are interwoven into the fabric of community life, providing opportunities for awareness and reflection. In addition to physical and emotional wellness, students are also encouraged to consider community needs. Through a robust service learning program, students can engage in local, national, or international service opportunities. Juniors and seniors can also elect to pursue semester or year-long internships in lieu of a sixth academic course.

By the Numbers: 2018-19

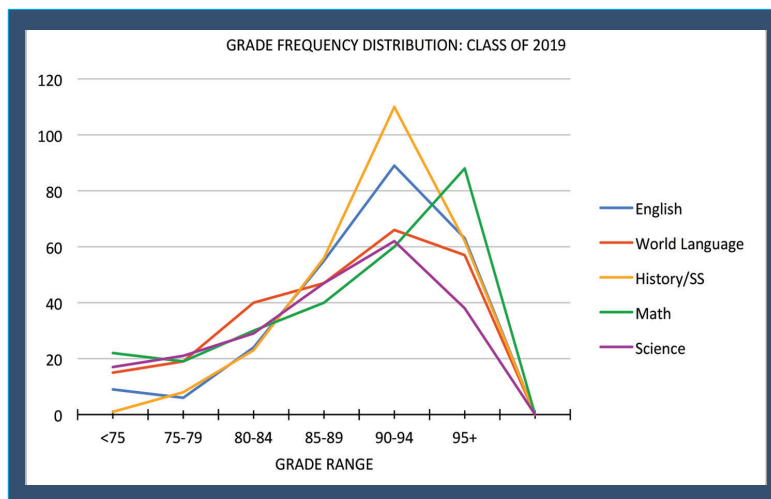
- 199 students enrolled from 53 different zip codes
- 48% of students live in Chicago.
- 52% of students live on the North Shore or the West/Northwest Suburbs.
- 80% of students take CTA or Metra to school.
- 27% of students identify as persons of color.
- 24% of students receive tuition assistance.
- 32% of students come from independent schools.
- 36% of students come from Montessori schools.
- 25% of students come from public schools.
- 7% of students come from parochial, boarding, or home schools.

Beacon Academy Class of 2019

35 students comprise Beacon Academy's Class of 2019. 12 members of the class are candidates for the International Baccalaureate Diploma Programme. The cumulative average midrange for the Class of 2019 is 87-92. The ACT midrange for the class (through the June 2018 administration) is 23-31. The grade frequency distribution chart represents all grades given at Beacon Academy during the 2017-2018 school year.

Beacon Graduation Requirements

- 4 credits in English
- 3 credits in mathematics (through Mathematics 3)
- 3 credits in history, including United States History
- 3 credits in science, including 2 laboratory science credits
- 2 credits in world language; graduates must reach a third year of proficiency in a world language to satisfy the requirement.
- 2 credits of fine or performing arts
- 5 elective credits



Beacon Academy Curriculum

In 9th and 10th grade, English, history, and science courses at Beacon Academy run as two year cycles with intentionally mixed grade level cohorts that reflect our Montessori identity. World Language and Integrated Math courses are leveled; students are placed in these courses based on skill level and experience. Courses of greatest rigor are listed in bold.

ENGLISH

American Literature A/B, Literature and Adaptation, Exploring Literary Genres 1 and 2, **IB English HL**

MATHEMATICS

Integrated Math 1-4, Statistics, Advanced Algebra, **IB Mathematics Studies/SL/HL**

SCIENCE

Integrated Science A/B, **IB Environmental Systems and Societies SL, IB Biology SL/HL, IB Chemistry SL/HL, IB Physics SL**

HISTORY

American History A/B, Contemporary Issues, Civics: Equity and Social Justice, **IB Environmental Systems and Societies SL, IB History HL, IB Philosophy HL**

WORLD LANGUAGES

Spanish 1-4, French 1-4, Arabic 1, Advanced Topics in Spanish, **IB Spanish ab initio/SL/HL, IB French ab initio/SL/HL**

THE ARTS/ELECTIVES

Intro to Theatre/Drama 1, Introduction to Theatre, Advanced Theatre, Advanced Theatre/Drama 2, Choir, Songwriting, Music Production, Music Studio, Dance, Digital Filmmaking, Practical Life, Computer Programming and Coding, Coding 1 and 2, Visual/Studio Art 1-2, **IB Music SL, IB Theater SL, IB Visual Art SL/HL**

Interim Terms

Twice a year, Beacon Academy allows students to pursue experiential learning opportunities beyond their regular class schedule. During Interim weeks, students may take mini-courses on campus, engage in "City as Classroom" learning experiences around Chicago, or travel internationally for learning and service. Students are invited to collaboratively design Interim experiences for themselves and their peers with faculty support. Select Interim programs have included: Riding the Chicago El; Exploring Chicago's Museums; Surviving the Souq: Into the Streets of 5 Arab Cities; Food, Festivals and Traditions of India and Pakistan; Mindfulness Through Movement and MoPeD; Beauty Culture; Late Night Comedy; Louder Than A Bomb; Dungeon Mastering 101; Water for Haiti Service Trip; Studying Chicago's Food Deserts; Design Your Life; Engineering In Action, and Personal Finance.

Jeff Bell, Head of School

Todd Ferguson, Academic Dean

Suzanne LoSasso, Director of Student Support

Siobhan Allen, Dean of Students

Kiran Awan, IB Coordinator

Joe Freeman, Director of College Counseling

Hilary Holder, Director of Admissions & Financial Aid

Beacon Academy Grading System

2018-2019



GRADE	MASTERY LEVEL	SKILLS DEMONSTRATED
96-100	High Mastery	Superior understanding and application of skills and knowledge in a wide variety of settings, providing masterful evidence analysis, synthesis, and evaluation and a compelling demonstration of originality and insight.
90-95	Mastery	Excellent understanding and application of skills and knowledge in a wide variety of settings, providing consistent evidence of analysis, synthesis and evaluation and a thorough demonstration of originality and insight.
83-89	High Proficiency	Thorough understanding and application of skills and knowledge in varied settings, showing effective evidence of analysis, synthesis, and evaluation and often demonstrating originality and insight.
76-82	Proficiency	Consistent understanding and application of skills and knowledge in some varied settings, showing some evidence of analysis, synthesis and evaluation and some demonstration of originality and thought.
70-75	Developing	Understands most of the required knowledge and skills, but with clear difficulties in some areas, applies knowledge and skills in familiar situations, but requires support.
60-69	Rudimentary	Some understanding of required knowledge and skills with fundamental difficulties in many areas; struggles to apply knowledge and skills in familiar situations, even with support.

Beacon Academy Grades

As a Montessori school, Beacon Academy firmly believes in using the language of the “Mastery Scale” to describe student progress and growth. Beacon reports numerical grades on the transcript using a 100 point scale, and all grades are unweighted. For colleges and universities that convert Beacon grades to other scales, we suggest the following conversions:

BEACON GRADE	GPA CONVERSION (4.0)	LETTER GRADE
90-100 (Mastery)	3.5-4.5	A
76-89 (Proficiency)	2.1-3.4	B
70-75 (Developing)	1.5-2.0	C
60-69 (Rudimentary)	0.5-1.4	D

Transcript Key

In composing and maintaining student transcripts, Beacon Academy strives to be as transparent as possible. Only courses offered by Beacon Academy are listed as Beacon Academy courses. Any coursework accepted for transfer will be clearly indicated and differentiated as having come from either a previous school or an alternative provider. Only courses offered by Beacon Academy will be included in the Beacon Academy academic average.

All courses at Beacon Academy are taught at an honors level. Courses designated International Baccalaureate will be indicated with the inclusion “IB” in the course title.

All Beacon Academy grades are reported on a 100 point scale. We do not convert coursework completed through other institutions to our numerical grading scale. All attempted courses are listed. We do not suppress or change failed courses, and we list all course withdrawals with a WF or WP.

Colleges Offering Admission to Beacon Academy Graduates

Students from the Classes of 2017 and 2018 were admitted to the following colleges and universities. Institutions listed in boldface type yielded one or more graduates.

- | | | |
|-----------------------------------|---------------------------------|--|
| The University of Alabama | Bates College (ME) | Butler University (IN) |
| Allegheny College (PA) | Belmont University (TN) | California State University, Los Angeles |
| Alma College (MI) | Beloit College (WI) | University of California, Irvine |
| American University (DC) | Berry College (GA) | University of California, Los Angeles |
| Appalachian State University (NC) | Boston College (MA) | University of California, San Diego |
| Arizona State University | Boston University (MA) | Carthage College (WI) |
| The University of Arizona | Bowdoin College (ME) | Case Western Reserve University (OH) |
| Bard College (NY) | Brandeis University (MA) | Central Michigan University |

Colleges Offering Admission to Beacon Academy Graduates (*cont.*)

Centre College (KY)
Champlain College (VT)
Chapman University (CA)
The University of Chicago (IL)
University of Cincinnati (OH)
Clark University (MA)
University of Colorado at Boulder
Colorado College
Colorado State University
Columbia College Chicago (IL)
Columbus College of Art and Design (OH)
Cornell College (IA)
Cornell University (NY)
Creighton University (NE)
University of Dayton (OH)
University of Delaware
Denison University (OH)
University of Denver (CO)
DePaul University (IL)
Drake University (IA)
Drexel University (PA)
East Carolina University (NC)
Eastman School of Music - University of Rochester (NY)
Eckerd College (FL)
Elmhurst College (IL)
Emory University (GA)
Flagler College (FL)
The George Washington University (DC)
University of Georgia
Gonzaga University (WA)
Goucher College (MD)
Grinnell College (IA)
Guilford College (NC)
Hampshire College (MA)
University of Hawaii at Manoa
University of Illinois at Chicago
University of Illinois at Urbana-Champaign
Illinois Institute of Technology
Indiana University at Bloomington

The University of Iowa
Kalamazoo College (MI)
Kent State University (OH)
Kenyon College (OH)
Kettering University (MI)
Knox College (IL)
Lake Forest College (IL)
Lawrence University (WI)
Lewis and Clark College (OR)
University of Louisville (KY)
Loyola University Chicago (IL)
Loyola University Maryland (MD)
Marist College (NY)
Marquette University (WI)
Massachusetts College of Pharmacy and Health Sciences
University of Massachusetts at Amherst
University of Massachusetts at Boston
The University of Memphis (TN)
Miami University (OH)
University of Miami (FL)
Michigan State University
University of Michigan
Milwaukee School of Engineering (WI)
University of Minnesota, Twin Cities
New College of Florida
University of New Hampshire at Durham
University of New South Wales (AU)
New York University
University of North Carolina at Asheville
Northeastern University (MA)
Occidental College (CA)
Ohio Wesleyan University
Oregon State University
University of Oregon
University of the Pacific (CA)
Point Park University (PA)
Pomona College (CA)
Portland State University (OR)

University of Portland (OR)
Princeton University (NJ)
University of Puget Sound (WA)
Purdue University (IN)
Quinnipiac University (CT)
University of Redlands (CA)
Reed College (OR)
University of Rhode Island
Rhodes College (TN)
Rice University (TX)
Rollins College (FL)
Rose-Hulman Institute of Technology (IN)
Saint Michael's College (VT)
University of San Francisco (CA)
Santa Clara University (CA)
Savannah College of Art and Design (GA)
School of the Art Institute of Chicago (IL)
Scripps College (CA)
Skidmore College (NY)
Slippery Rock University (PA)
Smith College (MA)
St. John's College (MD/NM)
St. Norbert College (WI)
St. Olaf College (MN)
The New School – Parsons School of Design (NY)
The University of Tampa (FL)
University of Tennessee, Chattanooga
University of Tennessee, Knoxville
Trinity College (CT)
Trinity University (TX)
Tufts University (MA)
Tulane University (LA)
University of Utah
Vassar College (NY)
University of Vermont
Washington University in St. Louis (MO)
Western Michigan University
Wheaton College (MA)
Whitman College (WA)
University of Wisconsin, Madison