

Scenario 4: Map & Population Data

Bonsall Unified School District

Neighboring School District

School Facilities

Elementary School

Middle School

High School

Board Members

Conceptual Trustee Areas

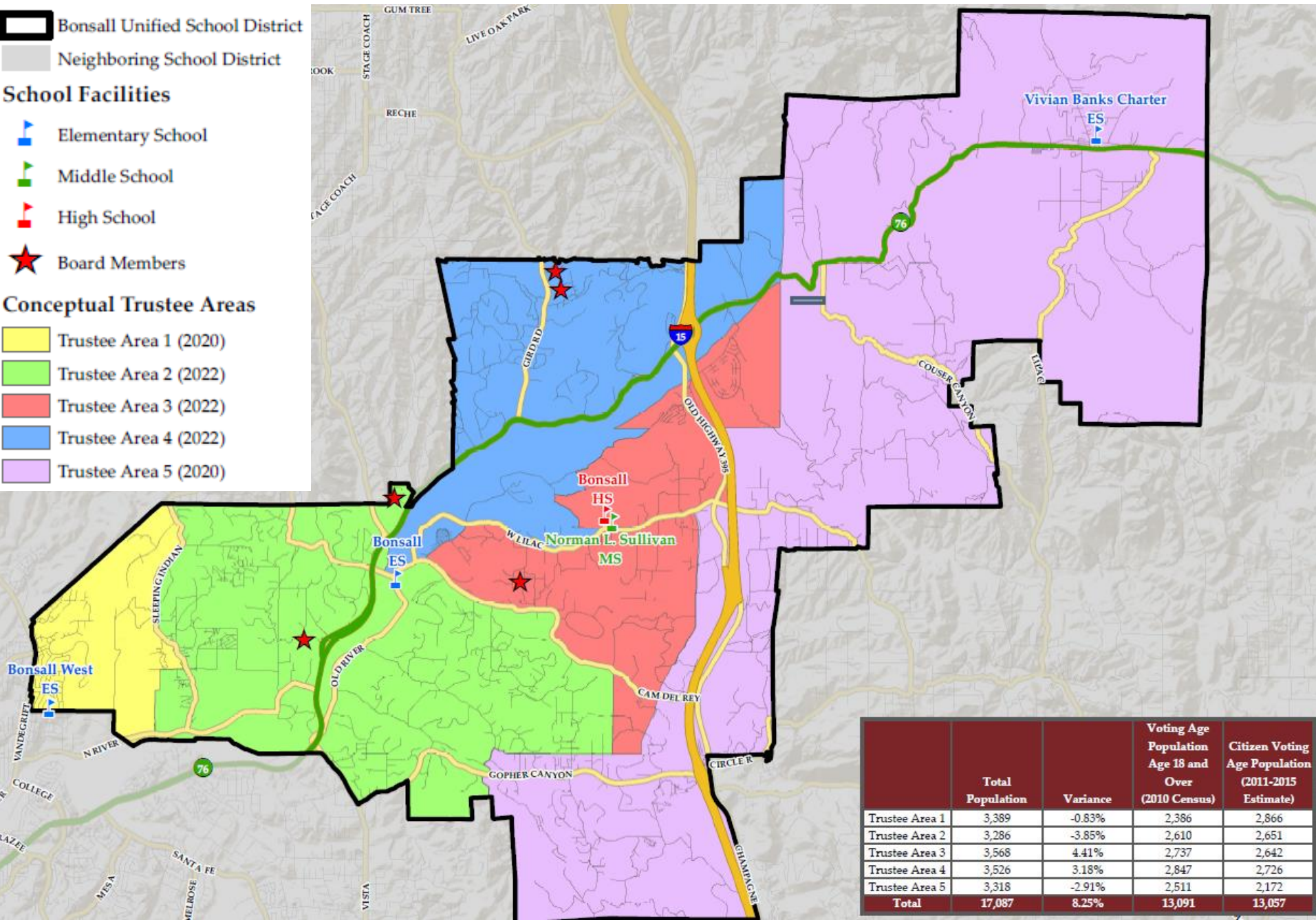
Trustee Area 1 (2020)

Trustee Area 2 (2022)

Trustee Area 3 (2022)

Trustee Area 4 (2022)

Trustee Area 5 (2020)



	Total Population	Variance	Voting Age Population Age 18 and Over (2010 Census)	Citizen Voting Age Population (2011-2015 Estimate)
Trustee Area 1	3,389	-0.83%	2,386	2,866
Trustee Area 2	3,286	-3.85%	2,610	2,651
Trustee Area 3	3,568	4.41%	2,737	2,642
Trustee Area 4	3,526	3.18%	2,847	2,726
Trustee Area 5	3,318	-2.91%	2,511	2,172
Total	17,087	8.25%	13,091	13,057