



School Safety and Student Well Being

A Multi-Tiered,
Multi-Agency Approach



School Safety & Student Well Being

Multi- Tiered, Multi-Agency Approach to Student Safety



01 Positive Behavior Interventions & Supports
Engagement
Caring Adult Relationships
Reporting

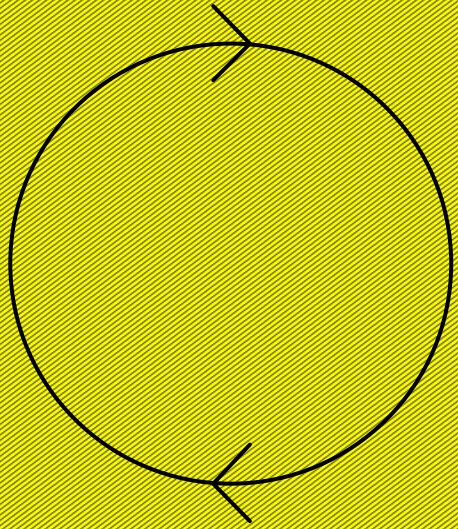
02 Employee Wellness
Safety Practices
Training
Resources

03 Preparedness
Prevention
Coordination
Communication

04 Curriculum Connections
Interventions & Supports

05 Hardware
Software
Security
Hazards





Positive School Culture/Climate



School Safety & Student Well Being

Positive School Culture/Climate

01

Positive Behavior Interventions & Supports (PBIS)

- Behavior Expectations & Matrices
- Student/Parent Handbook
- School Compact
- Discipline Policies & Procedures

02

Engagement

- Recognitions
- Awards
- Assemblies
- Programs
- Clubs
- Before/After school programs
- Addressing absenteeism
- Parent education nights

03

Caring Adult Relationships

- Classroom teachers, Principals/Assistant Principals
- Additional staff
 - Elementary PE, vocal, keyboarding teachers
 - Child Welfare & Attendance
 - Increase hours- Health Clerks, LMTs
- School Resource Officers
- Volunteers
- Outreach Counseling interns

04

Reporting

- Text a Tip
- Suicide/Threat Assessment Team
- Court orders on file

Recommendations & Next Steps

Grand Jury Recommendations

- Student ID badges worn at Middle School

Next Steps

- Increase hours school office assistant (2018/19)
- MTSS Grant for Middle School (2018/19-2020/21)
- Parents keep court orders on file
- Parents keep contact lists updated
- Examine feasibility of student ID badges to be worn at middle schools
- Continue to engage community





Staff



School Safety & Student Well Being

Staff

01

Employee Wellness

- Health screenings- TB, biometric
- Fitness activities and classes for employee health and well being
- Employee Assistance Program

02

Safety Practices

- Food preparation/Safe handling
- Bus driver safety procedures
- Maintenance & Operations (M&O) safety procedures
- OSHA Guidelines
- Safe Workplace Guidelines

03

Training

- District Emergency Response Team
- Evacuation drills- HB Safe Schools Coalition
- Run, Hide, Fight Training
- CPR/First Aid Training (2x/year)
- Mandated trainings- child abuse, sexual harassment, health services, suicide awareness

04

Resources

- Staff badges
- Risk Management (online trainings & resources)
- Background checks (visitor, staff, contractors)
- Emergency preparedness & management system
- Safety committees
- Grant writers

Recommendations & Next Steps

Grand Jury Recommendations

- Explore all possible funding resources
- Implement procedures to ensure staff are required to wear visible photo badges

Next Steps

- Protocols & training for responding to unauthorized visitors
- Provide various training modules- in person, webinar, table top exercises, mock, simulation
- Training- what to do when law enforcement arrives
- Continue to search for grants as possible funding sources for security, training, equipment/materials
- Reinstitute procedures & requirement for staff to wear visible photo ID while on campus





Emergency Management



School Safety & Student Well Being

Emergency Management

01

Preparedness

- Emergency Response Protocols
- Safety Plans
- Emergency supply inventoried
- Reunification Plan
- Standardized Emergency Management System/Incident Command System

02

Prevention

- Suicide/Threat Assessment Protocols
- Annual fire extinguisher checks
- Annual fire inspections
- Safety drills-monthly
- Revised Lockdown Procedure (Run/Hide/Fight)

03

Coordination

- Crisis Response Team- District & County
- HB Safe Schools Coalition
- OCDE Program Specialist-Emergency Operations Center/ Orange County Intelligence Assessment Center
- HB Fire
- Site/District Emergency Operations Center

04

Communication

- 2way devices
- Safety alerts-multiple modalities
- Reporting procedures of incidents
- District emergency radios
- Cameras/Monitors
- Bells/Clocks/Speaker System
- Software filters

School Safety & Student Well Being

Emergency Management

01

Safe School Plan

- Each school turns in Comprehensive Safe School Plan
- Components include school description, compliance with education code safety requirements, crisis response plan, and goal setting

02

Law Enforcement

- Plans are shared with law enforcement, staff, and parents
- Plans are reviewed by District staff

03

Drilling, Training, and Advising

- Plans are utilized in conjunction with regular drilling, training, and advising.
- Provides the best chance for a positive outcome in the event of a crisis

04

Emergency Operations Center

- District Emergency Response Team training
- Coordinated actions with site EOC
- Use of same language and protocols



School Safety & Student Well Being

Emergency Management

01

Campus Walks

- District safety committee walked campuses with staff looking for ways to improve our overall campus safety
- District safety committee observed each school's safety drill to provide feedback & recommendations
- Architects & staff walk campus to assess security measures

02

Site Vulnerabilities Assessments

- Each campus is unique and has different areas of strength and vulnerabilities.
- Recommendations from various perspectives

03

Teacher and Staff Crisis Training

- Training staff in "Run – Hide – Fight"
- Crisis Response Team available to support students and staff post emergency

04

Continued Training

- Personnel continue to train with our emergency responders and threat assessment experts



Relationships with Law Enforcement



Recommendations & Next Steps

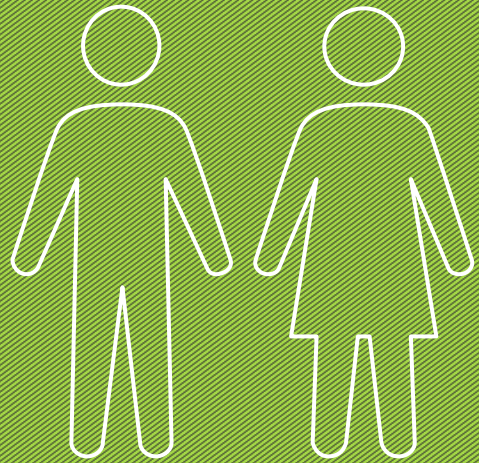
Grand Jury Recommendations

- Implement procedures to ensure that all campuses maintain a complete, daily log of every visitor/volunteer enter/exit campus
- Implement procedures to ensure that photo identification is required of all campus visitors/volunteers before a visitor's badge is issued
- Evaluate available communication devices (custodial, supervisory, playground supervisors, coaches) enabling 2way communication with the office

Next Steps

- Evaluate availability of 2way devices for appropriate staff
- Purchase/implement Visitor Management System
- Explore emergency notification systems
- Encourage staff and families to have a personal emergency plan
- Encourage families to have safety conversations
- Risk management campus walk for site assessments
- Coordinate with local agencies- primary, alternative, contingency, and emergency plans, evacuation routes
- Coordinate with families to educate them on "what parents do when law enforcement arrives"





Mental/Physical/ Social Emotional Health



School Safety & Student Well Being

Mental/Physical/Social Emotional Health

Mental Health

- OC Mental Health
- Phoenix House curriculum (5th-8th)
- Outreach Counseling interns
- School psychologists offer counseling (IEPs, short term)
- Suicide Awareness Training (middle schools)
- Trauma Informed Trainer of Trainers
- Referrals to outside agencies

Physical Health

- Health education curriculum
- DATE/TUPE Reps at each site
- Nutrition guidelines
- Health Council
- Health staff- clerks, SRN, RN
- Immunization/health screenings
- Health referrals
- Injury/illness policies
- PE/Athletics safety practices
- Fitness Testing- 5, 7

Social Emotional Health

- Second Step Curriculum
- Project Alert
- Too Good for Drugs
- Social skills group/Behavior Support Team
- Digital Citizenship
- Internet safety use agreements
- Cyberbullying policies
- Phoenix House- student based and family intervention



MULTI-DEPARTMENTAL COMMUNICATION

Mental/Physical/Social Emotional Health

CHILD WELFARE & ATTENDANCE ↔ PSYCHOLOGICAL SERVICES ↔ HEALTH SVCS ↔ STAFF



CWA/ Psychological Services/Program Specialists/Health Svcs

Weekly & monthly debriefs with staff



Communication is key in a crisis scenario



Direct Access between departments



Embedded Student Supports

Teacher & Parent
Referrals to
Counseling and
Psychologists

SARB

Open Lines of
Communication
with District
Personnel

SST

Child Find
Obligation



Recommendations & Next Steps

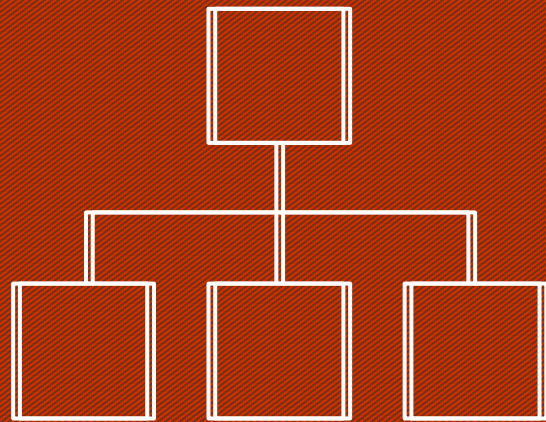
Grand Jury Recommendations

- Consider requiring all campus incidents of unauthorized access be recorded, tracked, and reported to the district office on a quarterly basis

Next Steps

- Examine feasibility of AEDs on campuses
- Continue to provide training in CPR and First Aid
- Purchase updated Second Step curriculum
- Explore Digital Citizenship/social media curriculum for consistency of implementation





Facilities



School Safety & Student Well Being

Facilities

01

Security

- Security assessment
- Classroom/interior security with lockblocks
- Fire and Burglar Alarms at All Schools- Centrally monitored
- After hours security monitoring
- LED Lighting
- Fencing assessment

02

Hardware/ Software

- Bells/speakers/clocks - fire system
- M&O Work Order System for reporting
- Content filters

03

Hazards

- Morning safety & hazard assessment by custodian
- Facility Inspection Tool and Annual Facilities Assessment Walks for Deferred Maintenance

04

Maintenance & Operations

- Regular maintenance of schools and equipment



Recommendations & Next Steps

Grand Jury Recommendations

- Re-evaluate lack of secure fencing on all school campuses
- Evaluate each school to perform a school security assessment to evaluate their current school safety plan

Next Steps

- Campus walk through- site assessment from risk management
- Develop crisis response box for ease of available information for each school site
- Provide emergency maps for law enforcement/fire
- Upgrade surveillance cameras
- Improvements to Site Access Gates, Signage and Fencing as Needed
- Develop and submit plans for fencing to Division of the State Architect



School Safety & Student Well Being

Multi- Tiered, Multi-Agency Approach to Student Safety



Positive School
Culture/Climate

Staff

Emergency
Management

Mental/Physical/
Social Emotional
Health

Facilities

01 Positive Behavior
Interventions &
Supports
Engagement
Caring Adult
Relationships
Reporting

02 Employee
Wellness
Safety
Practices
Training
Resources

03 Preparedness
Prevention
Coordination
Communication

04 Curriculum
Connections
Interventions
& Supports

05 Hardware
Software
Security
Hazards

