

Character Counts!



Character is what a person is inside. Our character is revealed by how we act when we think no one is watching. A person of good character has good ethical values and a strong commitment to do what is right.

Character Counts is a framework that embodies the **Six Pillars of Character: trustworthiness, respect, responsibility, fairness, caring, and citizenship.**

Teachers and Counselors at Kipapa Elementary School provide lessons and activities focusing on one value word at a time. Assemblies are conducted where students are recognized as examples of the value word for that month.

**At Kipapa Elementary School
Character Counts All The Time!**

**Please call us if you have any
questions or concerns!**



Main Office	305-4200
Fax	627-7326
Attendance Line	305-4200
Principal: Corinne Yogi	305-4222
Vice Principal: Leigh Ann Siaosi	305-4223
School Services Coordinator (SSC): Lynn Lee	305-4252
Counselors: Silvia Koch	305-4213
Lori Harris	305-4212

Kipapa Elementary School

95-076 Kipapa Drive
Mililani, Hawaii 96789

February 2018

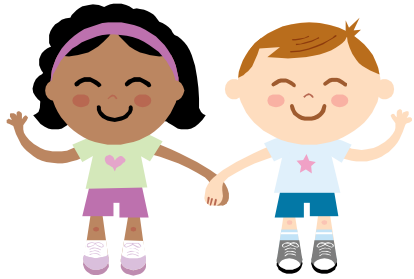


School Counseling Program

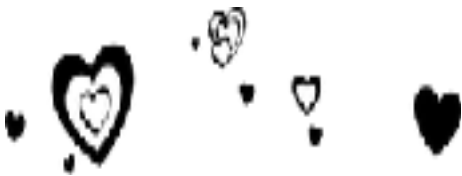
Our Vision

Kipapa Elementary School is a dynamic community where we dream, strive, and achieve together.

What Every Child Needs



- ❖ Love
- ❖ Security
- ❖ Acceptance
- ❖ Respect
- ❖ Encouragement
- ❖ Responsibilities
- ❖ Affection
- ❖ Patience
- ❖ Honesty
- ❖ Forgiveness
- ❖ Discipline



What Counselors Can Do!

Kipapa Elementary School Counselors help **ALL** children get the most out of school!

We provide:

***Classroom Guidance**

Lessons based on the Character Counts Six Pillars of Character: trustworthiness, respect, responsibility, fairness, caring, and citizenship.

***Small Group Counseling** on topics such as: self-esteem, friendship skills, grief, divorce, anger management, social skills, etc.

***Individual Counseling** in a one-on-one setting to provide support and to teach the student positive ways to cope with academic, social, and/or emotional issues.



***Test Coordination** of standardized norm and criterion referenced tests such as the National Assessment of Educational Progress, Hawaii State Assessment, and Terra Nova.

***Collaboration and Consultation** with teachers and parents to meet the individualized learning needs of students.

***Communication** to teachers, families, and students on successful strategies and interventions to help remove the barriers to learning.

Continuous Notice of Non-Discrimination

The Hawaii State Department of Education (HIDOE) and its schools do not discriminate on the basis of race, sex, age, color, national origin, religion, or disability in its programs and activities. Please direct inquiries regarding HIDOE nondiscrimination policies as follows:

ADA/Section 504 inquiries

Krysti Sukita, ADA/504 Specialist
Civil Rights Compliance Office
Hawaii State Department of Education
P.O. Box 2360
Honolulu, Hawaii 96804
(808) 586-3322 or relay
crco@notes.k12.hi.us

Title VI, Title IX, and other inquiries

Anne Marie Puglisi, Director
Civil Rights Compliance Office
Hawaii State Department of Education
P.O. Box 2360
Honolulu, Hawaii 96804
(808) 586-3322 or relay
crco@notes.k12.hi.us

CRCO (3/16/18)