

**NEW HAVEN UNIFIED SCHOOL DISTRICT**

**DATE:** 4/21/18  
**OWNER:** New Haven Unified School District  
**PROJECT:** Bid Schedule #709 - Educational Services Center (ESC) HVAC  
Upgrades: **Educational Services Center (District Office)**  
**SUBJECT:** **ADDENDUM NO. 2**

---

CHANGES, CLARIFICATIONS, AND/OR ADDITIONS TO THE RFP DOCUMENT & TO  
THE SPECIFICATIONS AS FOLLOWS:

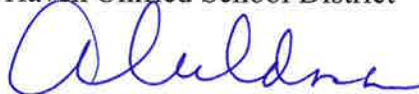
1. Change in Deadline for Bid Submission: Item #2:

“Sealed Bids will now be received at **1:30 P.M. on THURSDAY JUNE 28, 2018** at the District Office at 34200 Alvarado-Niles Road, Union City, CA, at or after which time the bids will be opened and publicly read aloud...”

**Please acknowledge receipt by email no later than tomorrow, Friday June 22, 2018 by 4 P.M.**

2. Change out Sheet M0.2 with the new attached Sheet M0.2.
3. Estimated arrival of District provided equipment August 6, 2018.

New Haven Unified School District



Chief Business Officer

### AIR CONDITIONING UNIT SCHEDULE

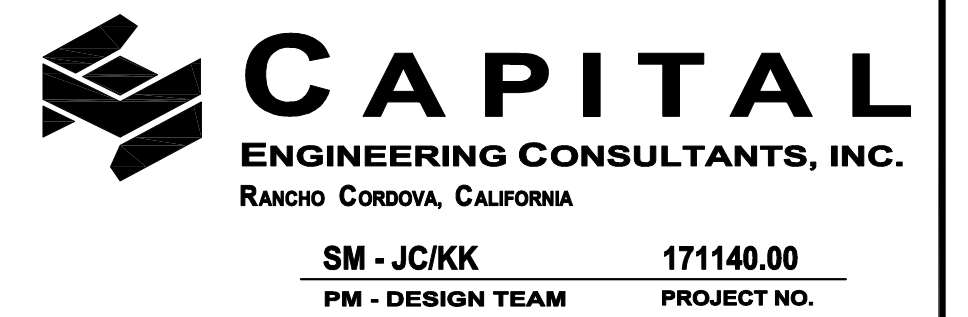
UNIT	AREA SERVED	"MFR" MODEL NO.	NOM. COOLING TONS	CFM	MIN. O.A. (CFM)	ESP (IN. W.G.)	SENS. COOLING CAP. (MBH)	TOTAL COOLING CAP. (MBH)	DX. COIL								ELECTRICAL DATA					OPER. WT. (LBS.)	MOUNTING DETAIL	CONTROL DIAGRAM	NOTES				
									ROW	FPI	FACE VELOCITY (FPM)	EDB (°F)	EWB (°F)	LOB (°F)	LWB (°F)	VOLT/PH	SUPPLY FAN (QTY) HP	BHP	FLA	MCA	MOCP					EFF (%)	CFM	SP	FLA
AC 3	BOARD ROOM	"CARRIER" 39S SIZE 13	15	6000	2800 450 LOWER	2.0	212.0	212.0	6	10	468.4	83.4	65.9	50.7	50.7	208/3ø	(1) 7.5	6.0	20.8	26.0	45.0	91.0	6000	0.5	9.1	1280	1 M5.1	2 M6.1	1, 2, 3, 4, 5, 6, 7
AC 4	OPEN OFFICE	"CARRIER" 39MW SIZE 21W	25	10,510	850	2.0	277.5	292.9	6	14	490.2	79.4	64.0	55.2	54.6	208/3ø	(2) 5.0 10.0 TOTAL	7.6 TOTAL	28.0	35	60	89.5	10510	0.5	28.0	2315	1 M5.1	1 M6.2	1, 2, 3, 4, 5, 6, 7

- NOTES:**
- UNITS SELECTED AT 90° AMBIENT TEMPERATURE COOLING, 25° HEATING.
  - PROVIDE WITH FULLY MODULATING POWERED EXHAUST/ECONOMIZER WITH STATIC PRESSURE CONTROLLED VFD.
  - PROVIDE WITH 2" MERV 8 THROWAWAY FILTER FOR UNIT START UP. FURNISH AND INSTALL NEW 2" MERV 8 FILTERS FOR FINAL INSTALLED FILTERS.
  - PROVIDE WITH SINGLE POINT POWER CONNECTION.
  - PROVIDE UNIT WITH VFD FOR FILTER LOADING AND SOFT START. VFD SHALL BE FIELD INSTALLED AND STARTED UP BY CONTRACTOR.
  - DUCT SMOKE DETECTOR IS REQUIRED IN UNIT SUPPLY AIR DUCT ACCORDING TO CMC 609. DETECTOR TO SHUT DOWN UNIT UPON DETECTION OF PARTICLES OF COMBUSTION AND SIGNAL THE FIRE ALARM SYSTEM.
  - OPERATING WEIGHT DOESN'T INCLUDE POWER EXHAUST/ECONOMIZER AND MIXING BOX.

### CONDENSING UNIT SCHEDULE

UNIT	"CARRIER" MODEL NO. (OUTDOOR UNIT)	TOTAL COOLING CAPACITY (MBH)	COMPRESSOR			MCA	MOCP	VOLT/PH	REFRIGERANT LINES		SEER (EER)	OPER. WT. (LBS.)	MOUNTING DETAIL	CONTROL DIAGRAM	NOTES
			QTY	RLA	LRA				LIQUID	SUCTION					
CU 3	38AUDB16	173.5	2	25.0	164.0	60.8	80.0	208V/3ø	3/8	1 1/8	(12.5)	735	2 M5.1	2 M6.1	1
CU 4	38APD025	287.5	2	48.1 48.1	245.0 245.0	120.2	150.0	208V/3ø	5/8	1 1/8	(11.0)	1150	2 M5.1	1 M6.2	1

- NOTES:**
- UNITS SELECTED AT 90° AMBIENT TEMPERATURE COOLING, 25° HEATING.



KEYPLAN

CONSULTANT

No.	DATE	REVISION COMMENTS
Δ	6/20/18	ADDENDUM 2
Δ		
Δ		

PROJECT DESCRIPTION  
NEW HAVEN USD ESC HVAC REPLACEMENT

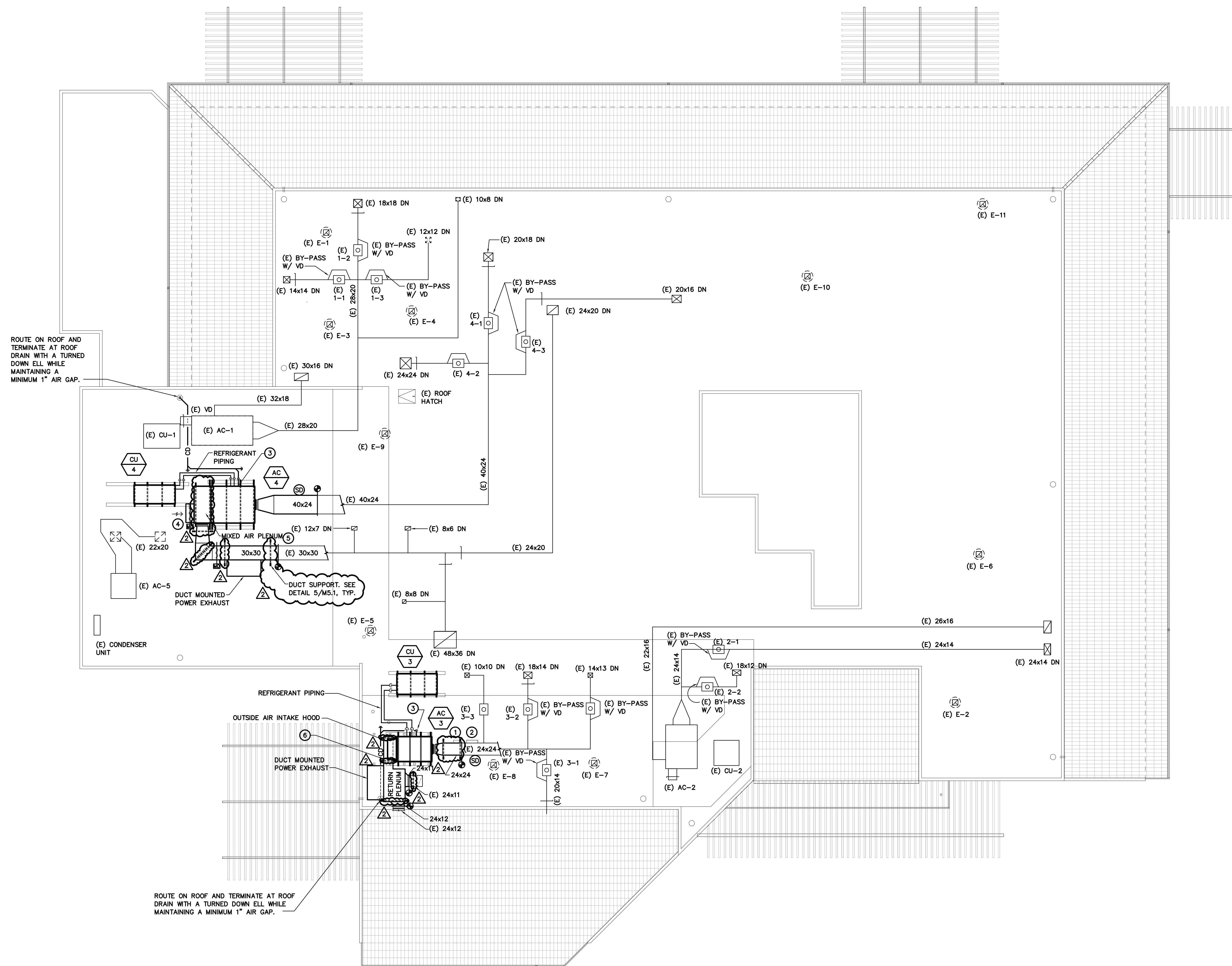
DRAWING TITLE  
HVAC SCHEDULES

	DRAWN BY JC/KK	APPROVED SM
	CHECKED BY SM	PROJECT NO. 171140.00
	SCALE AS NOTED	DRAWING NO.
	DATE 05/22/2018	M0.2
DATE SIGNED:		100% CD SHEET OF



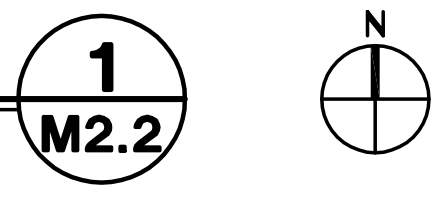
**CAPITAL**  
ENGINEERING CONSULTANTS, INC.  
RANCHO CORDOVA, CALIFORNIA

SM - J/CKK 171140.00  
PM - DESIGN TEAM PROJECT NO.



**HVAC ROOF PLAN**

SCALE : 1/8" = 1'-0"



**GENERAL NOTES:**

1. TEST AND BALANCE AC/3 AND 4 TO DESIGN AIRFLOW AT UNIT. PROVIDE FULL TAB AND START-UP REPORTS FOR THE AC AND CU UNITS.

**SHEET NOTES:**

1. RELOCATE EXISTING CONTROL PANEL. EXTEND WIRING AS REQUIRED TO ACCOMMODATE NEW LOCATION.
2. EXISTING ELECTRICAL PANEL.
3. CONNECTION OF CONDENSATE DRAIN LINE TO AC UNIT SHALL INCLUDE A LINE SIZE UNION, MINIMUM 4" DEEP 'P'-TRAP AND A PLUGGED TEE (CLEANOUT) AT ALL OFFSETS. REFER TO 4/PS.1 FOR CONDENSATE PIPE SUPPORT ON ROOF DETAIL.
4. 40x40 OUTSIDE AIR INTAKE HOOD WITH DAMPER
5. 36" DEEP FIELD FABRICATED MIXED AIR PLENUM. PLENUM WIDTH AND LENGTH SHALL MATCH UNIT SIZE.
6. FIELD FABRICATED RETURN AIR PLENUM. CONNECT PLENUM TO AC-3 RETURN AIR INLET. PLENUM HEIGHT SHALL BE MIN. 26" HIGH TO ACCOMMODATE INSTALLATION OF POWER EXHAUST.

KEYPLAN

CONSULTANT

No.	DATE	REVISION COMMENTS
△	6/20/18	ADDENDUM 2
△		
△		
△		

PROJECT DESCRIPTION

NEW HAVEN USD ESC HVAC REPLACEMENT

DRAWING TITLE

HVAC ROOF PLAN

	DRAWN BY JC/CKK	APPROVED SM
	CHECKED BY SM	PROJECT NO. 171140.00
	SCALE AS NOTED	DRAWING NO. M2.2
	DATE 05/22/2018	100% CD SHEET OF

DATE SIGNED: