



# WIMBERLEY ISD 2018 BOND UPDATE

Primary School & Ag Barn Design Complete

## PRIMARY SCHOOL

- ✓ Design complete on primary school building and parking lots
- ✓ Civil Engineering plan for water and wastewater service is being studied



*Rendering of New Primary School on Winters Mill Parkway*

## SCIENCE/CAREER & TECHNOLOGY EQUIPMENT

- ✓ Science equipment put to good use
- ✓ Robotics team is headed to state



*"Sofishticated Science" Robotics Team*



*Rendering of New Ag Barn*



*Rendering of New Ag Barn View from South*

## BAND INSTRUMENTS

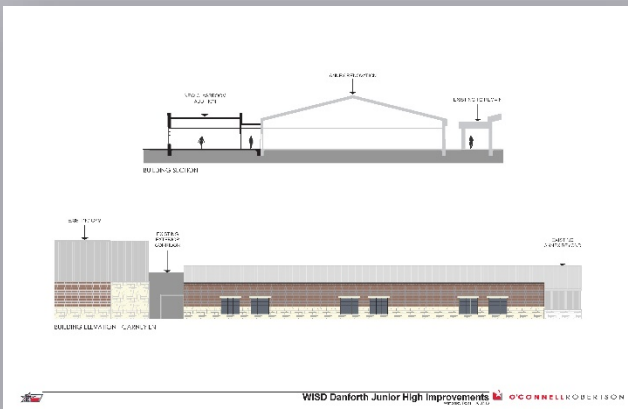
- ✓ Band instruments have arrived
- ✓ Band truck and trailer coming soon



*Texan Band*

## AGRICULTURE BARN

- ✓ Permitting is complete
- ✓ Location established between the high school and the agriculture/welding shop
- ✓ Design Phase is complete



## DANFORTH JH EXPANSION & REMODEL

- ✓ Design phase of 6,000-square-foot addition to the junior high and kitchen renovation is complete
- ✓ Renovation will start in summer 2019
- ✓ Design includes 8 additional classrooms, up from the original plan for six and still remaining on budget