



Marching Band & Color Guard

2019-20 Marching Band Handbook



Band & Color Guard

Beavercreek High School Band and Color Guard

Matt Frost- Director

Marlyn Strickland – Assistant Director

2660 Dayton-Xenia Rd., Beavercreek, OH 45434

(937) 458-2469 www.beavercreekband.org

Welcome to the Beavercreek High School Band program!

You are part of an amazing organization that has a reputation for being excellent not only in performance, but also in personal character. As part of the band, you have a responsibility to help maintain this reputation AND you have the opportunity to make it even better! The entire instrumental music department functions on the principle of working together to be part of something greater than each individual. This handbook will provide you with the information you need to get started on your pathway to success. Take a moment to read everything. Look at it as an opportunity to reflect on yourself and imagine how you can fit into the group around you as a positive influence.

As always, if you have questions or concerns, ask a member of the leadership team, staff, Mr. Frost, or Mr. Strickland. We are here to help you succeed as part of THE PRIDE OF BEAVERCREEK – THE 2019 BEAVERCREEK HIGH SCHOOL MARCHING BAND AND COLOR GUARD!

TABLE OF CONTENTS

TABLE OF CONTENTS	3
THE BHS INSTRUMENTAL MUSIC DEPARTMENT	4
STAFF DIRECTORY	6
MARCHING BAND ORGANIZATION	6
LEADERSHIP TEAM	7
BECOMING A LEADER	8
QUALITIES FOUND IN SUCCESSFUL LEADERS	9
GENERAL POLICIES	10
THREE SIMPLE RULES	11
RESPONSIBILITIES OF ALL MEMBERS	11
CHALLENGES FOR 2019-2020	12
ITEMS YOU'LL NEED FOR MARCHING BAND	12
2019 SPRING & SUMMER MARCHING BAND SCHEDULE	13
2019-2020 MB EVENTS CALENDAR	14
ATTENDANCE POLICY	15
MARCHING BAND FEES FOR NEW AND OLD MEMBERS	16
PAYMENT SCHEDULE	16
CARE OF YOUR MARCHING BAND UNIFORM	18
GENERAL UNIFORM CARE –	19
VISUAL TECHNIQUE	20
POSTURE	20
INSTRUMENT CARRIAGE AND STANDING POSITIONS	21
MARCHING TECHNIQUES	22
READING AND UNDERSTANDING DRILL	25
FOR PARENTS	26
TRIP CHAPERONES	27
ADDITIONAL PARENT VOLUNTEERS	29
OTHER WAYS TO HELP	30

THE BHS INSTRUMENTAL MUSIC DEPARTMENT

The BHS Band Program consists of six band classes (Varsity A, Varsity B, Concert A, Concert B, Symphonic, and Wind Symphony), which are grouped by ability level. All students must perform an audition for placement in one of these classes BEFORE enrolling. Auditions are held during the month of May for placement in band for the following year. Students earn academic credit for each year of participation in band. Students who need to schedule an audition should contact Mr. Frost at: matt.frost@beavercreek.k12.oh.us. There are additional (non-credit) performing groups in the music department including jazz band, pep band, marching band, color guard, percussion ensembles, and student led chamber ensembles.

Varsity Band(s): This is the entry level band at BHS. There will be two sections of Varsity Band that will be of equal ability level. Open to students in grades 9-12, each of these bands will perform at various concerts as listed on the calendar.

Concert Band(s): This is the intermediate level band at BHS. There will be two sections of Concert Band that will be of equal ability level. Open to students in grades in 9-12, this ensemble will perform at various concerts as listed on the calendar.

Symphonic Band: This is the advanced level band at BHS. Open to students in grades 9-12, this ensemble will perform at various concerts as listed on the calendar.

Wind Symphony: This is the premier wind band at BHS. Open to students in grades 9-12, this ensemble will perform at various concerts as listed on the calendar.

Jazz Ensembles: The Jazz Ensembles are open to students who are currently enrolled in a BHS Band or Choir class and are selected by audition. Each ensemble consists of standard instrumentation for a jazz band. All jazz ensembles rehearse outside of the school day and perform at various concerts listed on the calendar. Auditions for jazz ensembles take place in November and students are expected to commit to participating in the ensemble for the remainder of the school year. Rehearsal and performance schedules will be released prior to auditions so students can ensure availability for each group. Participation in Jazz Ensembles requires grade eligibility as established by BCS.

Winter Guard(s): The Beavercreek High School Winter Guard will begin with auditions in November/December and the season will run until April. There will be a fee for participation in Winter Guard that will be announced prior to the audition for the season. Students who are selected to perform with the BHS Winter Guard are expected to commit to participating throughout the winter guard season. Rehearsal and performance schedules will be released prior to auditions so students can ensure availability for the season. Participation in Winter Guard requires grade eligibility as established by BCS.

Indoor Percussion: The Beavercreek High School Indoor Percussion Ensemble will begin with auditions in November/December and the season will run until April. Membership in this ensemble is open to all percussionists and double reed players in fall marching band as well as percussionists and double reed players in 8th grade at either Coy or Ankeney MS. There will be a fee for participation in IPE that will be announced prior to the audition for that season. Students who are selected to perform with the BHS IPE are expected to commit to participating throughout the IPE season. Rehearsal and performance schedules will be released prior to audition so students can ensure availability for the season. Participation in IPE requires grade eligibility as established by BCS.

Pep Band: The BHS Pep Band provides music for select basketball games in November through March. The Pep Band season is divided into two halves with approximately 6 games each. Although no audition is required, students are required to attend a rehearsal at the beginning of each Pep Band session in order to participate in each session. Students sign up for available spots to play for each game. The Pep Band schedule will be released in November.

Marching Band: “*The Pride of Beavercreek*” is open to students in grades 9-12 who are enrolled in a band class. The season begins with a participation commitment in late May, includes summer rehearsals, and performances from August through early to mid- November. Although this ensemble requires extensive time and energy, the rewards students experience through teamwork, accomplishment, and pride significantly outweigh the investment. There is a fee to participate in Marching Band. Please refer to the Marching Band section of this document for details. Participation in Marching Band requires grade eligibility as established by BCS.

Fall Color Guard: Color Guard is a dance ensemble, including flags, rifles, and sabers, open to students in grades 9-12 and performs as members of the Marching Band. Auditions are held in May and selected students must commit to participation for the entire marching band season. There is a fee to participate in BHS Marching Band and Color Guard. Please refer to the Marching Band section for details. Participation in Color Guard requires grade eligibility as established by BCS.

STAFF DIRECTORY

Matt Frost

Director of Bands & BHS Music Dept. Chair

matt.frost@gocreek.org

(937) 458-2469

Marlyn Strickland

BHS Assistant Director of Bands

marlyn.strickland@gocreek.org

Mariah Strickland

BHS Assistant Marching Band Director

CMS Band Director

Laura Conrad

BHS Assistant Marching Band Director

AMS/CMS Band Director

Andy Weaver

BHS Assistant Marching Band Director

AMS Band Director

Maureen “Mo” Longo

Percussion Director

maureen.longo@gocreek.org

Johnathan Gillman

Color Guard Director

jonathan.gillman@gocreek.org

Jeff Sydelko

Web Design

MARCHING BAND ORGANIZATION

The Beaver Creek Marching Band is made up of students in grades 9-12 and consists of the following elements:

The Wind Section	Both brass and woodwind players
The Percussion Section	Battery (marching) and front ensemble
The Color Guard	Visual elements, including dance, rifles, flags, and other equipment
The Drum Majors	Student leaders in charge of much of the daily operation of the band, behind the scenes work, and conducting the band during performances
The Leadership Team	Students chosen by an extensive audition process who are responsible for specific performance and logistical aspects of the band

All of the above named sections perform and practice together under one name:

The Beaver Creek High School Marching Band

LEADERSHIP TEAM

What makes up the leadership team?

Staff + section leaders + drum majors + service leaders = LEADERSHIP TEAM.
The staff to student leader relationship is KEY.

What responsibilities do section leaders have?

Section leaders will be responsible for all performance aspects of their section, whether that be marching, music, routine etc. They must be the most prepared at all times so that they can pay enough attention to the needs of those around them. A section leader who spends too much time in rehearsal on their individual needs will not be able to be aware of their section's needs. Preparedness is a must! He/she must purposefully plan sectionals to meet the needs of the section with an overall goal of improving the entire ensemble. The section leader will stay in communication with the drum majors and discuss what goals have been met and seek advice and counsel for future goals. He/she must be able to communicate clearly with both students and staff.

What responsibilities do the drum majors have?

The drum majors are student leaders with more responsibility than any other students. He/she must have a very strong overall understanding of all aspects of the band including marching, music, guard, and many behind the scenes aspects of the band. These students must be the ultimate communicators and be able to seamlessly move from student to staff. This is absolutely a year-long commitment to being the "face of the band". These students must have a complete commitment to the goals of the band program and its staff, and should expect to spend additional time outside of rehearsal to meet these goals.

What are the basic jobs of the service organization leaders?

Student service organizations are groups that will provide logistical support for the program. Each of the 5 groups will have one leader who will manage both equipment and personnel. These students must be able to plan ahead and plan solutions for problems before they even exist. These crews and job descriptions are as follows:

- **Truck Crew** – This leader is responsible for the management of all of the band's equipment while traveling as well as a crew of students.
- **Uniform Committee** – This leader is responsible for uniform care, distribution, organizing washing, fitting, repair, etc. They will manage uniform parts as well as a crew of students. This student must be very good at communication skills so they can communicate needs to staff and parents who volunteer to help.
- **Librarian** – This is the only leader who does not have a crew to manage, other than the band staff that is! This is a year round position helping the staff stay on top of the sheet music needs of the band program.
- **Set-up Crew** – This leader is responsible for managing equipment at rehearsal including water, electronics, the podium, and yard line markers. They will have a crew of students who they manage.
- **Clean-up Crew** – This leader will be in charge of general clean-up of all rehearsal spaces including practice fields and the band room. They will have a crew of students whom they manage.

BECOMING A LEADER

- Why do you want this position?
- When did you decide you wanted to be a leader?
- In what ways do you already lead? Are you a "servant leader"?
- What have you done to prepare yourself for this challenge? Do you have the leadership skills you need? What about marching/playing/spinning skills?
- Do you have a track record that will help or hurt you? How do you overcome parts of your track record that might "hurt" you?
- What do you think others' perception of you is right now and why? What might others think of you get a position?
- How will you deal with your peers and friends looking at you differently if you are selected for the leadership team?
- How would you react if you didn't get a band leadership position? How would you react if you did?
- In what areas can you affect the most change? What characteristics do you possess make you best able to make a difference?
- How well do you perceive problems? What do you do about them? Why? Why not?
- How well do you communicate with students and adults? How are your people skills? Listening skills?
- How well do you follow up on things? Do you see things through to their conclusion?
- Can you stay motivated and consistent ALL season? What about ALL year? How?
- If you have been a leader in the past, how have you stayed active as a leader after marching season?
- How do you decide when or when not to speak up about something?
- Can you live up to the standards that you will expect from others? Have you in the past?
- How will you respond if decisions are made by staff, drum majors, or other leaders that you might not personally agree with?
- What if your friends don't agree with decisions that the leadership team makes? Can you stand your ground?
- Will you have more desire to do the RIGHT thing than others do to do the wrong thing?
- Will you have the desire to put the needs of others before your personal needs?
- Do you truly understand the concept of selfish behavior?
- How do you prioritize needs? How do your needs relate to the needs of others? Can you prioritize others even when you need to focus on yourself?

What is the next step? Work hard to demonstrate your dedication to the band throughout the year and sign up for leadership interviews in the spring.

QUALITIES FOUND IN SUCCESSFUL LEADERS

Honesty	Vision
Communication	Courage
Ability to Delegate Duties	Integrity
Sense of humor	Humility
Commitment	Strategic Planning Ability
Creativity	Cooperation
Positive attitude	Focus
Ability to inspire	Patience
Consistency	Compassion

Can Transform Band Goals into Section Goals

GENERAL POLICIES

Tobacco, Alcohol, and Drugs

The Beavercreek High School Band will follow the school policy as it applies to drugs, alcohol, or drug paraphernalia. Any student found in possession of drugs, alcohol, or drug paraphernalia during a band event will be immediately removed from the program.

Food, Gum, Trash, etc.

No food or drink is permitted in the band room except water. Food should not be consumed at band events except during breaks or designated times. No trash is to be left at any rehearsal or performance site.

Playing Your Instrument at Games

All playing will be done in an orderly manner and be directed by the Director or the Drum Majors. No one, including percussion, is to play in the stands without permission.

Football Games

All band members are to be placed in stands by section at all times. Non-band members are not permitted to sit with the band in the stands. Band members will be given the third quarter of each game to use restrooms, get refreshments, visit friends, etc. You must always be in groups of 2 or more. There may be occasions when we do not take third quarter off if the situation requires it. Please conduct yourself at a high level at all times – you represent both the band and Beavercreek High School.

Bus Trips

All members are required to ride the provided bus to all performances. Students will sign up for a bus for the entire season. There will be 2 adults on each bus. They are in charge. All recorded music sources must have headphones. The noise level must be kept down on all bus trips. *Students who do not follow the rules will be assigned another bus for the remainder of the season.* Any student wanting to ride with their parent must submit a school “Alternate Transportation Form” in advance. This form must be signed by student, parent, principal, and band director. Forms are available in the BHS Main Office or Ferguson Hall Office.

Public Displays of Affections

All school policies will be enforced. Don't let your actions infringe on others. This is in effect on all bus rides as well. Students can lose performance privileges due to infractions of this rule.

Sportsmanship

Think before you speak or act. “If you can't say something nice, don't say anything at all.” Please conduct yourself at a high level at all times – you represent both the band and Beavercreek High School.

Marching Band Uniforms

A complete set of uniform care instructions is in this handbook. It is your responsibility to care for your uniform. Monetary fines will be levied for improper uniform care. We are only as good as we look – The Beaver Creek High School Band uniform is a symbol of pride and dignity to many people. Please treat it with the utmost respect at all times. Never allow anyone to wear any part of your uniform. Students may wear only the black Beaver Creek Band baseball cap with their uniform. No other cap may be worn while in uniform.

Overnight Trips and School Behavior

Band students are expected to set the standard for behavior when traveling with the band as well as in the everyday classroom. **Students who have been suspended from school for behavior infractions may lose travel privileges for trips that take place during that school year. This could include Florida tours as well as in-season trips.**

THREE SIMPLE RULES

1. If you would not do it or say it while standing next to Mr. Frost, it is probably not appropriate behavior *and should not take place.*
2. You are responsible for actions and behaviors of The Beaver Creek High School Bands. You are responsible for each other.
3. You are expected to strive toward maturity. *Maturity... Having attained a high quality or desired state by constant growth and development, often displayed by doing the appropriate thing at the appropriate time.*

RESPONSIBILITIES OF ALL MEMBERS

Responsibility to yourself:

You owe yourself the benefit of TRYING --TRYING to play your best, TRYING to march your best, TRYING to perform your guard routine the best you can, TRYING to get along with others, TRYING TO BE THE BEST PERSON YOU CAN BE! Your job is always to help contribute to the success of the group and NEVER take away from that success!

Responsibility to Each Other:

Getting along with others in our complex society is indeed a difficult task. You have the obligation and responsibility to respect the rights of others. Anti-social behavior will only breed poor behavior in others and bring unwanted trouble into the band. Excessive talking, rumors, bad manners, etc. are all examples of anti-social behavior. Please respect the rights of others both in and out of rehearsal, and treat others as you wish to be treated. **You are either part of the solution or part of the problem. Think carefully before you act or speak!**

THERE WILL BE NO INITIATION OR HAZING OF ANY KIND. THIS BEHAVIOR ONLY DESTROYS
TEAMWORK!

CHALLENGES FOR 2019-2020

All of these topics will be covered in detail throughout the year

- *Please revisit this section for an updated list later this summer*

TEAMWORK = STAFF + STUDENTS WORKING TOGETHER

ITEMS YOU'LL NEED FOR MARCHING BAND

- Comfortable clothes – shorts, sweatpants, t-shirts, etc. (no jeans, no skirts)
- Comfortable shoes – sneakers with socks (no high tops, no sandals, no flip flops)
- Water bottle – large, insulated plastic, with your name clearly printed on it (It helps our environment and saves time during water breaks)
- Sunscreen & insect repellent
- 3-ring binder – with your name, drill number, and plastic sheet protectors
- Drill Books (wait to buy until details are provided in the summer)
- GREAT ATTITUDE!

BEING PREPARED IS THE FIRST STEP TOWARDS SUCCESS!!

2019 SPRING & SUMMER MARCHING BAND SCHEDULE

“Where Decades of Superior Performance On & Off The Field Is Developed”

Please see the attendance policy for answers to questions about missing rehearsals. ALL missed rehearsals must be accounted for with an absence form (blue form)!

APRIL

29 – Guard Clinic 4:30-7:00

MAY

1, 6, 8, 13, 15 – Guard clinics 4:30-7:00
1, 8, 15, 22, 29 – Battery 4:30-6:30
2, 9, 14, 21, 28 – Front Ensemble 4:30-6:30
17 – Mini-Camp
20 – **Commitment Forms Due**

JUNE

5, 12, 19, 26 – Percussion 4:30-6:30
17, 18, 19, & 20 – Guard New Member Camp 9am-1pm
24, 25, 26, & 27 – All Guard 9am-1pm

JULY

3 – All grades 10-12: rehearsal 6-9
4 – Parade grades 10-12 time TBA
8 – Guard: 5-9
8 – Winds & Percussion: 6-9
9 – Guard: 5-9
9 – Winds & Percussion: 6-9
10 – Guard: 5-9
10 – Winds & Percussion: 6-9
11 – Winds & Percussion: 6-9
12 – Winds & Percussion: 6-9

JULY – Continued

15 – Guard: 4-8 Winds & Percussion 6-9
16 – Guard: 4-8 Winds & Percussion 6-9.
17 – Guard: 4-8 Winds & Percussion 6-9
18 – Guard: 4-8 Winds & Percussion 6-9
19 – Guard: 4-8 Winds & Percussion 6-9
22 – **ALL:** rehearsal 1-4 and 6-9
23 – **ALL:** rehearsal 1-4 and 6-9
24 – **ALL:** rehearsal 1-4 and 6-9
25 – **ALL:** rehearsal 1-4 and 6-9
26 – **ALL:** rehearsal 1-4 and 6-9
Preview show – 7:00 pm
29- **BAND CAMP** - 8 a.m. – 10 p.m. –
lunch & dinner provided
30- **BAND CAMP** - 8 a.m. – 10 p.m. –
lunch & dinner provided
31 – **BAND CAMP** – 8 a.m. – 10 p.m. –
lunch & dinner provided

AUGUST

1 – **BAND CAMP** – 8 a.m. – 10 p.m. –
lunch & dinner provided
2 – **BAND CAMP** – 8 a.m. – 7 p.m. –
lunch & dinner provided
*parent show at 6pm
5 – **ALL:** rehearsal 6-9
6 – **ALL:** rehearsal 6-9
7 – **ALL:** rehearsal 6-9
8 – **ALL:** rehearsal 6-9

ALL students are expected to attend ALL summer rehearsals. Work is not an excused absence. With our new school year calendar the majority of your vacations should happen in the month of June. As of July 17th we will be learning drill. Attendance is required at that point.

School Day Rehearsals

Percussion – Rehearsals Mon, Wed, Thurs from 4:15pm to 6:15pm

Winds/Guard – Rehearsal Tues, Wed, Thurs from 4:15pm to 6:15pm

There will be a mandatory study hall for all students from 3:15pm to 4:00pm each rehearsal day

Each section will have a sectional one day a week from 6:15pm to 7:00pm

2019–2020 MB EVENTS CALENDAR

All performances are mandatory. Please refer to the band attendance policy regarding performances. Students missing in the show do negatively impact our overall score.

JULY - AUGUST

July 4	Beavercreek 4 th of July Parade (Grades 10-12 only)
July 29-31, 1-2 (MON-FRI)	Band Camp
August 24 (SATURDAY)	Rehearsal 9-1 (In Stadium)
August 30 (FRIDAY)	Football @ Xenia
August 31 (SATURDAY)	OFF

SEPTEMBER

6 (FRIDAY)	Football Home vs. Ponitz Career Tech Center
7-8 (SAT-SUN)	Popcorn Festival
13 (FRIDAY)	Football @ Springboro
14 (SATURDAY)	OMEA – Competition @ Troy HS (OMEA)
20 (FRIDAY)	Football Home vs. Lebanon (Homecoming)
21 (SATURDAY)	OFF (Homecoming)
27 (FRIDAY)	Football @ Centerville
28 (SATURDAY)	Band Competition @ OSU (OMEA)

OCTOBER

4 (FRIDAY)	Football @ Springfield
5-6 (SAT-SUN)	Trip to Nashville, Tennessee (Overnight)
11 (FRIDAY)	Football Home vs. Wayne (8 th Grade Band Night)
12 (SATURDAY)	OFF
18 (FRIDAY)	Football @ Trotwood
19 (SATURDAY)	Band Competition (MSBA or OMEA, TBA)
25 (FRIDAY)	Football Home vs. Kettering Fairmont
26 (SATURDAY)	Band Competition (MSBA or OMEA, TBA)
29 (WEDNESDAY)	6 th Grade Concert #1 (Tentative)
30 (THURSDAY)	6 th Grade Concert #2 (Tentative)

NOVEMBER

1 (FRIDAY)	Football Home vs. Miamisburg
3 (SUNDAY)	OMEA State Finals @ Welcome Stadium
14 (THURSDAY)	Tentative performance at The Greene

APRIL

29 (TUESDAY)	BHS Band Awards Ceremony
--------------	--------------------------

MAY

8 (FRIDAY)	Mini-Camp
23 (THURSDAY)	Last day of school

ATTENDANCE POLICY

Attendance at band and guard rehearsals and events is vital to the success of every student in the ensemble. Simply put – your attendance at rehearsal makes everyone else better! Because of that, we need you at rehearsal! Performing with the BHS band and color guard is a privilege, not a right. In order to keep that privilege, students must attend rehearsals and work hard to achieve. Here are the expectations of attendance for each rehearsal this season:

Rehearsals prior to July 22nd and between the end of camp and the start of school:

For these rehearsals we expect you to attend if you are in Beavercreek. The only “excused” absences are if you are ill or out of town. Unexcused absences will likely result in loss of performance privileges. However, even in the case of “excused” absences, the band director reserves the right to not allow a student who is not prepared to perform.

Rehearsals between July 22nd and the end of camp:

These rehearsals are mandatory for participation in the ensemble. The only “excused” absences are due to illness. These are the only rehearsals that we will spend time learning specific drill sets and marking them on the pavement. We will not have time to go back and catch someone up that is absent from one of these rehearsals. Even though absences may be “excused” the band director reserves the right to not allow a student who is not prepared to perform. Unexcused absences will likely result in loss of performance privileges.

Rehearsals during the school year:

Students are expected to be at rehearsal if they are at school that day. While illness/absence from school will be “excused”, an absence may result in loss of performance privileges if the student misses new information and can't get caught up.

Rehearsal prior to any performance:

Absence from the rehearsal immediately prior to a show will likely result in loss of performance privileges. This is due to the fact that the student will likely miss new information without an opportunity to rehearse/learn that information prior to the performance.

Performances:

Absences from performances hurt every student in the ensemble. ANY absence from a performance for ANY reason will likely result in the loss of performance privileges for another performance. It is up to the director on which additional performances will be missed. It may or may not be the next performance.

Effort:

Students who attend rehearsals but do not participate in a positive way may lose performance privileges. This includes, but is not limited to, a student that attends rehearsal yet sits out for some reason.

MARCHING BAND FEES FOR NEW AND OLD MEMBERS

Fees for New Members (music section)

Total	\$640.00
Fees include: Camp costs	
Uniform rental, Shoes,	
Band Bag, Band jacket	
Sweat pants, Baseball	
Hat, Travel expenses,	
2 pairs band gloves	

Fees for Returning Members (music section)

Total	\$465.00
Fees include: Camp costs	
Uniform rental, Travel	
Expenses, 2 pair band	
gloves	

Fees for New Members (color guard)

Total	\$663.00
Fees include: Camp costs	
Show specific uniform	
rental, Shoes, Band Bag,	
Band jacket, Sweat pants,	
Travel expenses	

Fees for Returning Members (color guard)

Total	\$488.00
Fees include: Camp costs	
Show specific uniform rental,	
Travel expenses	

**The fees listed above are all paid to the Beavercreek Music Parents. There will be no additional "pay to play" fees to be paid to BCS for the 2019-20 school year.*

PAYMENT SCHEDULE

New Music Section Members

Deposit - Due 5/20/19	\$50.00
1st payment - Due 7/8/19	\$147.50
2nd payment - Due 7/29/19	\$147.50
3rd payment - Due 8/29/19	\$147.50
4th payment - Due 10/3/19	\$147.50

Returning Music Section Members

Deposit - Due 5/20/19	\$50.00
1st payment - Due 7/8/19	\$103.75
2nd payment - Due 7/29/19	\$103.75
3rd payment - Due 8/29/19	\$103.75
4th payment - Due 10/3/19	\$103.75

New Color Guard Members

Deposit - Due 5/20/19	\$50.00
1st payment - Due 7/8/19	\$153.25
2nd payment - Due 7/29/19	\$153.25
3rd payment - Due 8/29/19	\$153.25
4th payment - Due 10/3/19	\$153.25

Returning Color Guard Members

Deposit - Due 5/20/19	\$50.00
1st payment - Due 7/8/19	\$109.50
2nd payment - Due 7/29/19	\$109.50
3rd payment - Due 8/29/19	\$109.50
4th payment - Due 10/3/19	\$109.50

There are two ways to make payments:

- **The preferred method of payment is with a credit or debit card through Charms.** This is far easier on the staff from a bookkeeping standpoint. Because of this there is no longer a 3% fee on credit card payments. See the band website for details on how to make a credit card payment
- Payments can be turned in via check or cash. Checks should be made out to "BMPA" (Beavercreek Music Parents Association). All cash/check payments should be delivered to the band office in an envelope with the students name on the front. A band payment form should ALWAYS be included with each payment.

While there is a payment schedule, we will accept payments early.

We are happy to accept payment in full as soon as possible.

Multi-student Discount –

Families who have more than one band student in marching band will receive one \$50 discount. This discount will be found on Charms and should be requested on a payment form.

Student Accounts –

From time to time, students are given opportunities to fundraise for the purpose of offsetting participation fees. Students who have taken part in these fundraisers can see their profit posted in Charms. Students will be able to use the funds allocated to them to defray the costs associated with participation or trip fees for any BMPA activity for that specific student. However, these funds cannot be used for any other purpose. This includes music lessons, instruments, supplies, tickets or any other items. In addition, student accounts are available only to the student who raised the amount and cannot be transferred to any other student, including siblings. When a student graduates, fund balances that remain will be transferred to the general fund for that organization.

CARE OF YOUR MARCHING BAND UNIFORM

We need to take great care of our Beaver Creek Band Uniforms. The uniform is a source of great pride for our group and demands our respect.

Jacket

Check your jacket for missing buttons each time you put it on or take it off. Check it for snags and stains as well. When hanging your coat, make sure that the curve of the hanger faces the correct direction. Students must wear a black t-shirt (with sleeves) under their uniform. While this does not necessarily need to be a tour shirt, there are times that a tour shirt will be required. Always have another person help you zip the band coat. The zipper runs up the back on purpose to remind you that you need to work as a team to be successful. If you're not sure – Ask questions!

Pants

Make sure that they are always hung properly on the hanger. Make sure that the hem snaps are buttoned! Don't mess with the length of the suspenders without help from the uniform committee. Always wear athletic shorts under the uniform pants. Do not try to put on/take off your band pants with shoes on – shoes will rip out the hems or snaps.

Shoes & socks

All band students must wear the same band shoes. The BHS marching band wears MTX marching shoes. Shoes must be clean and polished before every show. Students must wear black socks that are at least mid-calf length. Ankle socks are not acceptable, even if they are black. Keep an extra pair in your band bag.

Gloves

Band gloves must be white and free from stains. Wash your gloves for every performance. (An extra pair of band gloves is a good idea for two show weekends.) Each band student is given one pair of gloves as part of their fees. Additional band gloves can be purchased at the band office for \$5.00 per pair. One pair of guard gloves is included in the guard fees. Additional guard gloves are \$13.00 per pair.

Helmets

Place your helmet in a secure place when not wearing it. Having your helmet fall can cause serious damage to both the helmet & plume. Take great care to keep the plume clean. Do not place helmet in locations where the plume can get wet or dirty.

GENERAL UNIFORM CARE –

- Do not pull or cut loose threads. Report them to a uniform committee member. Check your uniform weekly for any needed repairs (hems, buttons, etc.). Report any needed repairs to the uniform committee person in charge of your storage box.
- Keep all the parts of your uniform buttoned & zipped at all times. You may not wear your uniform in a sloppy manner! Secure the sleeves if necessary with the snaps provided. Please do not use tape of any kind on your uniform as it destroys the cloth!
- There is to be no horseplay in the uniform. Stay away from fences, busses, walls, etc. Wearing a light colored jacket requires extra thought. Additionally, please be extremely careful when eating while in uniform. Never drink dark colored drinks.
- Some emergency repairs can be fixed at a performance. Please report problems right away to ensure they can be handled in time! Refitting during the season will only be done in extreme cases. Color guard members will be given additional uniform care instructions by the guard staff during the season.

These are YOUR replacement costs of lost or damaged items:

Band Uniform (Jacket & Pants)	\$250
Gauntlets	\$35
Helmet with plume	\$100
Band shoes	\$35
Guard shoes	\$35
Band gloves	\$5
Guard gloves	\$13
Band tote bag	\$20

VISUAL TECHNIQUE

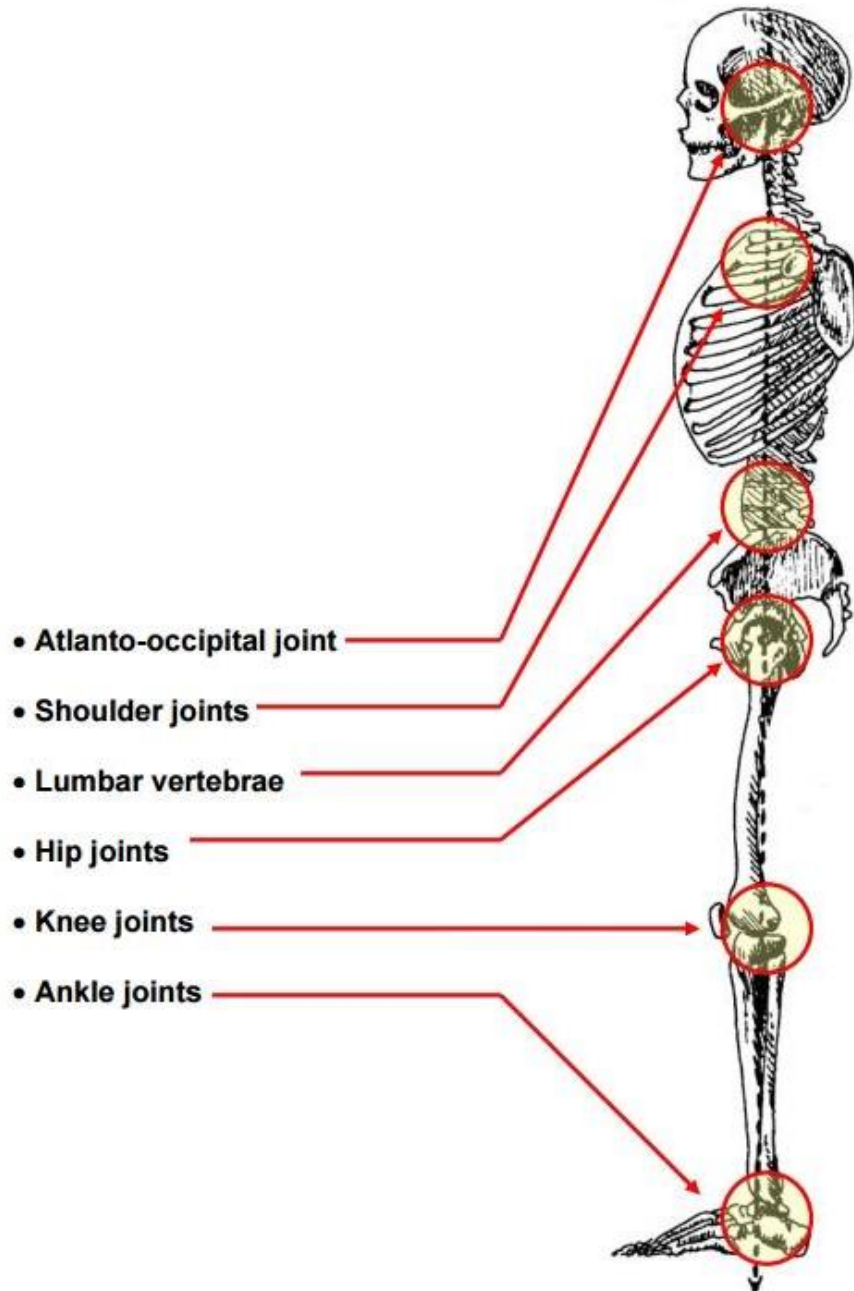
Introduction

The following pages contain brief but thorough explanations of all of the various techniques surrounding our marching band style. Make sure you are familiar with all the following material.

POSTURE

Creating a uniform visual style throughout the ensemble takes great attention to detail on the part of each individual. Your primary responsibility - one which sets the stage for ALL aspects of your individual visual presentation - is to understand and apply the principles of efficient body alignment. A thorough understanding of these concepts will help you to develop a sense of balance and to avoid letting unnecessary tension affect the way you move.

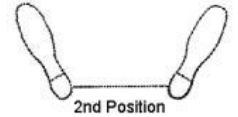
To the right, you will see the six skeletal joints, or balance points, that we want to align along an imaginary straight (or slightly leaning forward) and vertical line. Keep in mind that although these balance points will not always fall along a straight line as we march and move, it is still important to have an understanding of where they are located and how they function in order to find your center of gravity. Please note the important information about the following joints.



INSTRUMENT CARRIAGE AND STANDING POSITIONS

The Positions

- First Position, also known as open first, places the heels together and faces the toes outward so they are at a 45 degree angle. The knees are pointing the same direction as the toes, and the weight is centered over your ankle joint (with the weight primarily in the balls of the feet).
- Second Position has the feet at shoulder width apart. The toes are still facing at a 45 degree angle.



Parade Rest

Parade rest is a relaxed but focused position used in a variety of scenarios.

- Our feet are in second position – 45 degree angle with feet shoulder-width apart
- Your shoulders and upper chest should be relaxed so they rest on top of your ribs.
- Without instruments, the elbows bend to let the hands meet in front of the body, with the left hand in a relaxed fist and the right hand on top of the left hand
- When carrying instruments, check with your section leader or a staff member for the proper position of your instrument.

Attention

The attention position is a focused position that is used during performance.

- The feet are in open first position – 45 degree angle with feet together at the heels
- The shoulders are relaxed and the chest is open.
- Without horns, the arms fall at the sides with the elbows slightly bent, hands in a fist.
- With horns, please check with a staff member or section leader for proper position.

The 10% Forward Lean

The balance points of the body are now stacked along the line of gravity, and we use the idea of a "10% forward lean" to help center our upper bodies above our feet. If our balance points are aligned and our weight is distributed evenly between our platforms and heels, the 10% lean happens naturally.

Horns Up

When we move to the horns up attention position, the horn is simply brought into playing position, and the majority of the body should remain poised as it is for the carry position.

MARCHING TECHNIQUES

Pulse and Subdivision

Timing of the feet is crucial. Whether we are marching or marking time, we must move our feet in time with the pulse, or beat, of the music. This requires recognizing the subdivision of the beat and using it to move our feet at a consistent rate. To march in time, not only must a foot hit the ground with each beat, but the ankles must cross on the "ands" of the beat. The drum major is responsible for the tempo, or speed, of the music. To make sure we march and play in time as an ensemble, we first must watch the drum major's hands and make sure our feet move in time with the given tempo. In other words, put your feet with the drum major's hands, and play to your feet. If you do this, many timing problems within the ensemble will be eliminated. Watching and listening responsibilities change as we move around the field. Listen to your staff and leaders for specific information on this as we learn drill.

Marking Time

To mark time is to keep tempo in our feet without changing our location. Always begin motion with the left foot unless otherwise specified. Marking time, as well as the process of entering and exiting the attention foot position, will be explained in detail during rehearsal.

Step-Outs

When marking time with music in rehearsal, always execute step-outs. Each step-out should reflect your movement with the drill and should be executed with the same energy and exactness as an actual marching step. Step-outs will be explained in detail during rehearsal.

Forward March

The following steps define the basic forward marching technique we will use in most situations.

1. "And" before Count 1 - Engage and "push off" with the right leg to initiate motion
2. Count 1 - The left heel strikes the ground in front of you, with the body's weight split 50/50 between both feet.
3. "And" of Count 1 - The ankles should cross on the "and". Allow a SLIGHT bend in the moving knee as the ankles cross. Visualize only creating enough space between your heel and the ground to slide a piece of paper through.
4. Final count of move - Stab with your toe/platform on the final count of the move in order to best control your weight coming into the halt

Backward March

1. "And" before Count 1 - Shift our weight into the ball of the right foot and engage the muscles in the right leg to put pressure on the foot.
2. Count 1 - The left toe strikes the ground behind you, with the body's weight split 50/50 between both feet.
3. "And" of Count 1 - The ankles should cross on the "and". There should be NO bend in the right leg. Only the platforms will touch the ground as we move backwards
4. Final count of move - Stab with your toe/platform on the final count of the move in order to best control your weight coming into the halt.

*Note: While our basic technique is to march with straight legs, as step size increases, the legs will need to have a natural bend in order to keep the upper body from bouncing. It is of utmost importance that our upper bodies move smoothly at all times in order to allow us to play with the best possible technique and sound.

8-to-5

The basic step size that we use is called an 8-to-5 step. This means that 8 steps are used to span the length of 5 yards. We use the 8-to-5 step when finding our position on the field in relationship to yard lines, sidelines, and hashes, it is important to develop a good sense of how this step size feels. Each 8-to-5 step is 22.5 inches.

Step Size

When moving from one set to the next, each performer must take equal-sized steps between the starting and ending coordinates. While each separate move **generally** requires a different step size, step size within a single move must remain consistent unless otherwise instructed. Discrepancies in step size within a move keep forms and drill from moving smoothly set to set.

- As you approach the end of the one move, think ahead about what your initial step size will be for the next move. Try the following technique when you are learning or cleaning drill:
- Determine how many counts you have to get to the next dot
- From the previous dot point ahead to your next dot
- Now point halfway between the two dots. This is where you will be in half the counts.
- Continue to break the move down in halves until you are pointing to the place where you will be in one count. This is your step size, and your initial step must fall there.

Slides:

A slide is a move in which the shoulders are turned out to a 90-degree angle. To position your body for a slide, use the following checkpoints:

- The feet are at 0 degrees, with the knees aligned over the toes. The hips rotate 45 degrees and the shoulders rotate the full 90 degrees.

Imagine pushing one shoulder forward (if going forward left, push left should forward and vice versa) and pulling the other shoulder back.

Intervals/Spacing

An interval is the designated distance between two individuals. For example, a two-step interval is two 8-to-5 steps between performers. It is each performer's responsibility to know his or her spacing for each set. Individual performers must also understand how their spacing changes or works between each and every move.

Plus One/Minus One

As we rehearse individual or short series of moves within the drill, we will always end in what we call "plus one." This means that when we end a move or series of moves, each performer will not end by taking the first initial step of the following move. "Minus one" is the technique we will use when starting a move or series of moves in rehearsal. We begin by placing our feet in position for the last step of the previous move. Like the plus one technique, the feet must be placed in a step size and orientation that is consistent with the previous move.

Pathways

A pathway is the intended direction between two sets. Pathways by default will fall in a straight line unless your staff instructs you otherwise. Straight pathways will help intervals to remain consistent and, along with even step sizes, will help the forms and drill flow smoothly.

Dressing Forms

A form is either the entire picture or a certain portion of the picture created on the field in a drill set. To dress a form is to check your position within the form. A dress point is the point from which you guide your spacing for each move and generally corresponds with the position of a nearby performer.

- Dressing a linear form, for example, usually requires the performer to guide off the performer adjacent in either direction.
- Box-type forms will primarily dress to the performer at the front of each line, but will also have side-to-side and diagonal views that require attention.
- In dressing a curvilinear shape as it moves on the field, each performer must look down the curve over the next two or three performers in order to estimate the angle of the curve.

READING AND UNDERSTANDING DRILL

Finding Your Dot

Your coordinates will give you the information you need to find your dot on the field in each set. Your position in relationship to yard lines and hashes or sidelines is given in 8-to-5 steps. When we learn drill, we will often have zero points marked on each yard line. Zero points are spaced at 4-step intervals. The following system will help you find your dot for each set of the drill:

- First check the side of the field and the nearest yard line for your dot. Remember, left and right in your coordinates means left and right as the audience views the field from the home stands. If you are looking at the home stands, this will be the opposite of your personal left and right!
- Next, locate the hash or sideline that your dot references.
- Start from the hash or sideline. Following the yard line closest to your dot, use an 8-to-5 step to mark off your distance from the hash or sideline. It is helpful to use the zero points to help find your distance from the hash or sideline. Each zero point is 4 steps.
- Once you find your distance from the hash or sideline, mark off your distance from the yard line.
- Once you have marked off your distance from both the hash/sideline and the yard line, you have found your dot. Stand with your feet in open first position so the staff can check the form and make any necessary adjustments.

Drill Terminology

Since we are using a program this year (Pyware) to design our drill, there are a variety of ways coordinates could be written. In July, we will create a separate sheet to aid with the shorthand that corresponds with our drill writer's drill.

Moving Between Sets

In order to have successful performances, all performers MUST understand the principles of how they move together as an ensemble. Just as we achieve musical balance within the ensemble by knowing how our part fits into the ensemble at any given moment, we achieve visual balance by understanding our relationship to the individuals around us and the forms we create on the field. When learning drill, holding form becomes priority over ALL OTHER individual responsibilities.

FOR PARENTS

Website

All information and updates are available on our band web page. BMPA information is also available on the site. www.beavercreekband.org

Forms

Many forms are available online as well as in the band room. Forms we use include Payment Form (green form), Medical Form, Absent Form (blue form), Alternate Transportation Form, etc. PLEASE FILL OUT ALL FORMS NEATLY IN BLACK INK FOR EASY DUPLICATION.

Charms

Charms is an online organizational application you will need to use. Use the Charms link on the band website to update contact information, check account balance, and find other helpful information. Your child's initial password is their BCS student ID number. You can change it once you log in.

Recording performances

Some events prohibit the use of audio or video recording devices (including smart phones). Please check to be sure whether or not it is ok to record each performance. Failure to comply with regulations will result in the performing group's disqualification from the adjudicated event.

Communicating concerns

If you have concerns, please contact Mr. Frost directly, not a student leader. Please understand that with the large number of students enrolled in band, it may take some time for a reply. Be patient! Concerns will be addressed appropriately in a timely manner.

TRIP CHAPERONES

Band parents are used to chaperone all band trips. Parents will be given the opportunity to sign up online for the trips they are interested in. Chaperones will then be assigned to specific trips to chaperone. Watch the website starting in July to learn how to sign up.

Are there any costs?

Chaperones travel free on school buses (2 adults per bus). Parents get in to most shows free; however, some events do charge chaperones an admission charge. This is determined by the host school and we do not always know ahead of time which show will charge and which will not. If we travel by charter bus, parents pay their share of total bus cost (total cost of bus divided by 55). If the band stays overnight in a hotel, parents are charged for their rooms, meals, and any admission charges. The band will book all reservations, and parents will pay the band.

Can younger siblings come along with chaperoning parents?

No, siblings are not permitted to travel on school or charter busses.

Do chaperones get meals that are provided for the band?

Yes, any meal that is provided for the band will also be provided for parents who are chaperoning that trip as well as all bus and truck drivers. (We can't feed additional parents or siblings) These meals are pre-planned and paid for. We can't add numbers at the last minute.

What do chaperones do?

The truth is, if things go as expected, not much. You should get to just sit back and see the behind-the-scenes activities of the band. Student bus captains will take attendance. Staff will do all room checks. Students will do all loading and unloading of buses and trucks. It is fun to see how it all works. Just sit back and wonder why they don't work that hard and that fast at home!

If I have questions who should I contact?

Please contact Mr. Frost at school if you have questions or concerns.

BEAVERCREEK MUSIC PARENTS ASSOCIATION (BMPA)

The BMPA consists of parents of students from band, color guard, choir, and drill team. Through their various fundraisers, they contribute a significant percentage of the operating budget of each of the music department organizations. As *public school budgets get tighter and tighter, the importance of our Beaver Creek Music Parents Association becomes more and more important.* Meetings are held the first Monday of each month. All parents are encouraged to attend meetings and participate in their various activities. More information is available online: www.beavercreekmusic.org

Key BMPA activities include:

High School Concessions:

The largest fundraiser and biggest undertaking of the BMPA is running the indoor and outdoor concession stands throughout the entire school year. A concessions committee organizes the endeavor, stand managers lead groups of parents at each event and a volunteer coordinator ensures enough volunteers are available. **EVERY Parent is asked to participate in order to spread the workload.** Everyone's fees are much lower because of the money raised through concessions.

Fruit Sale

The first weekend each December the BMPA orders a semi-truck load of fresh oranges and grapefruits. Students pre-sell- then go to door selling bags of fruit within Beaver Creek. While students sell the fruit, parents are needed to organize, bag and drive student teams.

KROGER Rewards Program

Beaver Creek Music Parents Association participates in the Kroger Community Rewards Program. This program allows non-profit organizations to raise money through purchases at Kroger Stores by utilizing your Kroger Plus Card. All you have to do is log into your Kroger Plus card account and enter the BMPA's Non-Profit Organization number (NPO). This money will then be split between the different music departments based on the student ratio. Below are the instructions for enrolling your Kroger Plus Card and entering the NPO number 81866. *Go to the band web site, click the Kroger logo and follow the very simple registration process. THIS IS FREE MONEY TO THE MUSIC DEPARTMENT!* www.krogercommunityrewards.com

Amazon Smile Program

See band website to find out how you can earn money for the band program just by shopping on Amazon. <http://smile.amazon.com>

Scholarships

The Beavercreek Music Parents Association presents eight \$500.00 scholarships each year as part of the Senior Local Scholarship Program. Senior Band & Color Guard members are reminded to sign up with the counseling department early in the fall for "*Local Scholarship Information & Application.*"

ADDITIONAL PARENT VOLUNTEERS

Front Ensemble Crew

A group of parents assist with moving the front ensemble percussion equipment to and from the stadium at each performance. Students will do all the set-up and tear-down. We use towable carts and quad runners to move the electronics equipment. Percussion equipment is moved by students. Parents sign up for this volunteer position. One parent is chosen to head up this committee and schedule the other parents. We try to use a small group of parents to provide the proper continuity for the band. *If you have questions please contact Mr. Frost at school.*

Truck Drivers

The Beavercreek Band Truck (Semi Tractor-Trailer) is driven by selected parent drivers. Each driver is trained by the band drivers and must obtain their CDL class A license. The band uses a limited number of truck drivers in order to provide continuity for the band and minimize wear and tear on the truck. If you would like to help, please contact Mr. Frost at school if you have questions or concerns.

Uniform Fitting Committee

A group of parents helps to fit, alter, and repair uniforms. The fitting will start in July. If you would like to help, please watch the website for detailed information.

Uniform Washing Committee

A group of parents assists with washing the uniforms as needed during the season. This is coordinated by the student uniform chairperson. Volunteers will be requested during the summer. All washing supplies are provided by the band. Uniform washing takes place as needed during the 12 week fall season. Washing happens normally weekly or bi-weekly.

Sewing Committee

A group of parents assists with sewing flags and repairing various band items throughout the year. Please contact Mr. Frost to find out how you can help.

Camp Medical Staff

A group of nurses and other medically trained parents help with camp. If you would like to help, check the band website for details.

Camp Meal Staff

A group of parents help with the meals at band camp in August. If you would like to help, please check the band website for details.

OTHER WAYS TO HELP

There are several other things you can do to help offset the constantly increasing costs of the BHS Band, Color Guard, and music department.

Bi-Monthly Dining Out:

Several area restaurants host a "Beavercreek Band Day" during which they donate a percentage of the day's profits to our program. This is an easy way to help the band while enjoying a family meal. These events are typically held on Mondays.

Annual Giving Campaign:

The Beavercreek Band Program has grown exponentially over the last few years and we expect even more students to participate in our program in the future. In order to keep up with that growth, we are in need of funds to provide our students the same high-level of instruction we have come to expect. This includes items such as music for concerts, purchasing new equipment and instruments, and properly maintaining the equipment we own.

We are starting an Annual Giving Campaign and would like to honor those members of the community who choose to financially support our program by including their name in our concert programs.

For information on how to give go to: <http://giving.beavercreekband.org>

New Truck:

In order to support the performance schedule of the band and color guard, more than twenty years ago parent volunteers through the Beavercreek Music Parents Association raised funds and volunteered countless hours purchasing and configuring the current band tractor and trailer. Both were well used when we purchased them, the old trailer is more than 40 years old and the tractor 25. While well maintained over the last 20 years we have had them, age is taking its toll and maintenance costs and efforts have significantly increased. Last year funds were raised and a crew of parents worked to outfit our new trailer.

As an ongoing effort to offset costs of maintaining the truck tractor, trailer and small trailer we are continuously looking for donations and advertisers. Details can be found on our website: www.beavercreekband.org

Beavercreek[®]

Marching Band & Color Guard

