

# Camino Nuevo High School No. 2 – Temple Campus

2018 – 2019



Camino  
Nuevo  
Charter  
Academy

3500 West Temple Street, Los Angeles, CA 90004  
Office: (213) 736-5566 | Fax: (213) 736-5566  
CEEB: 054693 | [www.dalzelllance.caminonuevo.org](http://www.dalzelllance.caminonuevo.org)

**PRINCIPAL**

Mr. Lawrence Boone

**ASSISTANT PRINCIPAL**

Wesley Ellis

**ASSISTANT PRINCIPAL**

Chris Miller

**DEAN OF SCHOOL PROGRAMS**

Ashley Richardson

**SCHOOL OPERATIONS MANAGER**

Carmen Membreno

**LEAD COLLEGE COUNSELOR (9<sup>th</sup> AND 11<sup>th</sup>)**

Dr. Margarita Landeros

**COLLEGE COUNSELOR (10<sup>TH</sup> AND 12<sup>TH</sup>)**

Elizabeth Nicho

**STUDENT AND FAMILY SERVICE COORDINATOR**

Tanya Castro

**COLLEGE CENTER**

Phone: (213) 736-5566 ext. 5251 | Fax: (213) 382-1330  
[margarita.landeros@caminonuevo.org](mailto:margarita.landeros@caminonuevo.org)  
[elizabeth.nicho@caminonuevo.org](mailto:elizabeth.nicho@caminonuevo.org)



College Ready. College Bound.  
Agents of Change.

## The School

Camino Nuevo Charter Academy (CNCA) is a network of pre-K—12 public, college-preparatory charter schools. CNCA opened Camino Nuevo High School (CNHS) in 2004, in a diverse urban neighborhood, west of Downtown Los Angeles. In 2013, CNCA opened a second high school, Camino Nuevo High School No. 2—Temple Campus, and the original Camino Nuevo High School moved to a new location named the Miramar Campus. Students and staff had the option to move to the new location or remain at the Temple Campus. The majority of the students and staff remained at the Temple Campus. Given the relocation and opening of the new school, our graduating classes of 2015 and 2016 were first enrolled at our original CNHS before it relocated. Class of 2019 is the third to complete all four years at CNHS No. 2.

The curriculum, programming, expectations and college-going culture at CNHS No. 2 mirrors that of our original CNHS. The school serves communities that have been historically underserved. As an open enrollment charter school, students commute from all over the city, using multiple forms of transportation—some traveling more than an hour to attend school. CNHS No. 2 provides students with outstanding and enriched educational opportunities, and has taken an active role in the revitalization of the community. In 2018, CNCA recently graduated its eleventh senior class.

## Mission Statement

The mission of Camino Nuevo Charter Academy is to educate students in a college preparatory program to be literate, critical thinkers, and independent problem solvers who are agents of social justice with sensitivity toward the world around them.

## School Community

<b>Enrollment</b>	<b>458</b>
Student enrolled in Free or Reduced lunch	90%
Students with Special Needs	16%
English Language Learners	17%
Non-Native English Speakers	90%
Language spoken at home – Spanish	88%
Parent Education—Not High School Graduates	53%

## Accreditation and Memberships

California Charter Schools Association, Western Association of Schools and Colleges, American School Counselor Association, California Association of School Counselors

## Awards and Recognition

In spring of 2017, CNHS received the Gold Ribbon Recognition. CNHS has also received Gold medal status on the U.S. News & World Report list of the top 500 high schools, ranking #55 among charter schools nationwide. Moreover, CNHS was the only Los Angeles Unified high school honored with the Title I Academic Achievement Award from the California Department of Education. In 2013, we ranked as the #7 top school in California by the USC School Performance Dashboard.

## Graduation Requirements

### Courses

Students are required to meet the following courses in alignment with the A-G Course Requirements established by the University of California.

History/Social Science	3 years	Foreign Language	2 years
English	4 years	Visual and Performing Arts	1 year
Mathematics	3 years	College-preparatory Elective	1 year
Laboratory Science	2 years		

### **Senior Seminar**

As a culmination of students' personalized academic endeavors at CNHS No. 2, seniors are encouraged to pursue a project that responds to their personal or career interests. Students work on the semester-long project and defend it upon completion with an oral presentation and culminating written report. Some topics include: Screen Writing, Urban Issues, Environmental Issues, Fine Arts/Design, Social Justice and Science/Technology.

## **Academic Curriculum**

For the 2018—19 school year, we offer the following courses per subject area:

### **HISTORY/SOCIAL SCIENCES**

World History, U.S. History, U.S. Government, AP U.S. History, AP U.S. Government and Politics

### **ENGLISH**

English 9, English 10, English 11, Expository Reading and Writing (English 12), AP English Language & Composition

### **MATHEMATICS**

Algebra I, Algebra II, Geometry, Pre-Calculus, College Mathematics, Calculus, AP Calculus AB

### **LABORATORY SCIENCES**

Biology, Chemistry, Environmental Science, AP Biology, AP Chemistry

### **FOREIGN LANGUAGE**

French 1, French 2, Spanish 1, Spanish 2, Spanish 3, AP Spanish Language & Culture

### **ARTS**

Integrated Arts 1, Integrated Arts 2, Graphic Design 1, Graphic Design 2, Video Production, AP Studio Art: 2-D Design, AP Studio Art: Drawing

### **ELECTIVES**

Economics, Environmental Justice, Ethnic Studies, Creative Writing, Sociology, Yearbook, History of American Music, Film Studies, Holocaust & Human Behavior, Young Business Entrepreneurs, Model U.N., Chemistry Lab, College Peer Counselors

### **ADVANCED PLACEMENT**

Camino Nuevo High School No. 2 offers nine classes for the 2018 – 2019 school year. Any student interested in taking an AP course must go through an application process and is limited to two AP classes unless there are special circumstances.

## **College Courses**

The students at CNHS No. 2, Temple Campus take community college courses such as Speech, Sociology, Theatre and Criminal Justice through Los Angeles City College. Classes are offered to all students who wish to participate and will receive dual credit upon completion.

## **Grading and Ranking**

CNHS Temple Campus does not rank students. Our school uses a standards-based grading system. Students may request and apply for an Incomplete (I) at the semester. Students must complete the work within a timeframe to receive a passing grade for the course.

<b>A = 4.0</b>	<b>B = 3.000</b>	<b>C = 2.000</b>	<b>I/F = 0</b>
----------------	------------------	------------------	----------------

## Extracurricular Activities

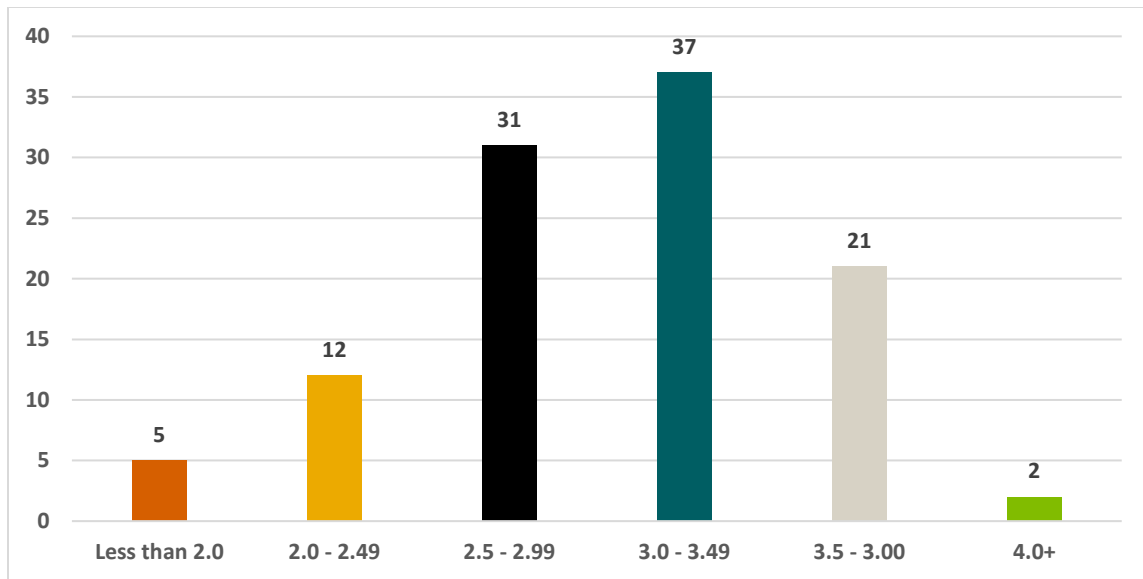
**Sports:** Volleyball (Girls – new 2018 - 19), Basketball (Boys and Girls), Soccer (Boys and Girls), Students Run LA (marathon training), Softball, Baseball, and Cheer

**Clubs:** Leadership, Architecture Construction Engineering (ACE), Historical Society, Youth Policy Institute, Photography Club, National Honor Society (new 2018 – 19), and Get Lit Poetry

## Class of 2018

### GPA Distribution

The class of 2018 had 108 students, based on cumulative weighted GPA.



### ACT and SAT Distribution

The following reflect the test score averages for the Class of 2018.

ACT Scores (Scale of 36)				
English	Math	Reading	Science	Composite
16	17	17	17	17

SAT Reasoning (Scale of 1600)		
Critical Reading	Math	Overall
480	456	936

## College & University Acceptances

Our students have consistently enrolled in higher education institutions at a rate of 98%-100% after high school graduation. The list below indicates acceptances over the past five years.

<i>Amherst College</i>	<i>College of the Holy Cross</i>	<i>Princeton University</i>
<i>Bard College</i>	<i>Concordia University - Irvine</i>	<i>Santa Clara University</i>
<i>Benemerita Universidad</i>	<i>Concordia University - Portland</i>	<i>Seattle Pacific University</i>
<i>Autonoma de Puebla</i>	<i>Connecticut College*</i>	<i>Sierra Nevada College</i>
<i>Beloit University</i>	<i>Cornell University</i>	<i>School of the Art Institute of Chicago</i>
<i>Bowdoin College</i>	<i>Daemen College</i>	<i>Smith College</i>
<i>Brown University</i>	<i>Dartmouth University</i>	<i>Southwestern University</i>
<i>Bryn Mawr</i>	<i>Davidson College</i>	<i>St. Mary's College of Indiana</i>
<i>Bucknell University*</i>	<i>Dickinson College</i>	<i>Syracuse University</i>
<i>California Lutheran University</i>	<i>Duke University</i>	<i>Tufts University</i>
<i>Carleton College</i>	<i>Franklin &amp; Marshall College</i>	<i>Tulane University</i>
<i>California Baptist University</i>	<i>Gettysburg College</i>	<i>University of Adversity</i>
<i>California State University</i>	<i>Grand Canyon University*</i>	<i>University of California</i>
<i>Bakersfield</i>	<i>Harvard University</i>	<i>Berkeley*</i>
<i>Channel Islands</i>	<i>Hawaii Pacific University</i>	<i>Davis*</i>
<i>Chico</i>	<i>Holy Names University</i>	<i>Irvine</i>
<i>Dominguez Hills*</i>	<i>Hope College</i>	<i>Los Angeles</i>
<i>East Bay*</i>	<i>Jacksonville University</i>	<i>Merced*</i>
<i>Fresno</i>	<i>Johnson &amp; Wales University</i>	<i>Riverside*</i>
<i>Fullerton*</i>	<i>Juniata College</i>	<i>San Diego*</i>
<i>Humboldt</i>	<i>Kalamazoo College*</i>	<i>Santa Barbara</i>
<i>Long Beach</i>	<i>La Sierra University</i>	<i>Santa Cruz</i>
<i>Los Angeles*</i>	<i>Lehigh University</i>	<i>University of Kentucky</i>
<i>Monterey Bay</i>	<i>Loyola Marymount University</i>	<i>University of La Verne</i>
<i>Northridge*</i>	<i>Loyola Marymount – New Orleans</i>	<i>University of Pennsylvania</i>
<i>Pomona</i>	<i>Massachusetts Institute of Technology</i>	<i>University of Puget Sound</i>
<i>Sacramento*</i>	<i>Marymount California University*</i>	<i>University of Redlands</i>
<i>San Bernardino</i>	<i>Menlo College</i>	<i>University of San Francisco</i>
<i>San Diego</i>	<i>Middlebury College</i>	<i>University of Southern California</i>
<i>San Francisco*</i>	<i>Mills College</i>	<i>University of the Pacific</i>
<i>San Jose</i>	<i>Mount St. Mary's University*</i>	<i>Ursinus College</i>
<i>San Luis Obispo</i>	<i>Northern Arizona University</i>	<i>Utah State University</i>
<i>Sonoma</i>	<i>Northumbria University</i>	<i>Vanguard University of Southern California</i>
<i>Stanislaus*</i>	<i>Ohio Wesleyan University</i>	<i>Vassar College</i>
<i>Chicago State University</i>	<i>Otis College of Art and Design</i>	<i>Wellesley College</i>
<i>Clark University</i>	<i>Pepperdine University</i>	<i>Whittier College</i>
<i>Colby College</i>	<i>Pitzer College</i>	<i>Woodbury University*</i>
<i>College of Saint Benedict and Saint John University*</i>	<i>Pomona College</i>	

\*Denotes Class of 2018 enrollment.

## CNCA College and University Data

	2008	2009	2010	2011	2012	2013	2014	2015	2016	2017	2018
Total % Accepted—4 year	60%	79%	74%	81%	80%	79%	82%	80%	75%	82%	72%
Out-of-State Enrollment	2%	1%	9%	8%	7%	7%	7%	8%	5%	9%	3%