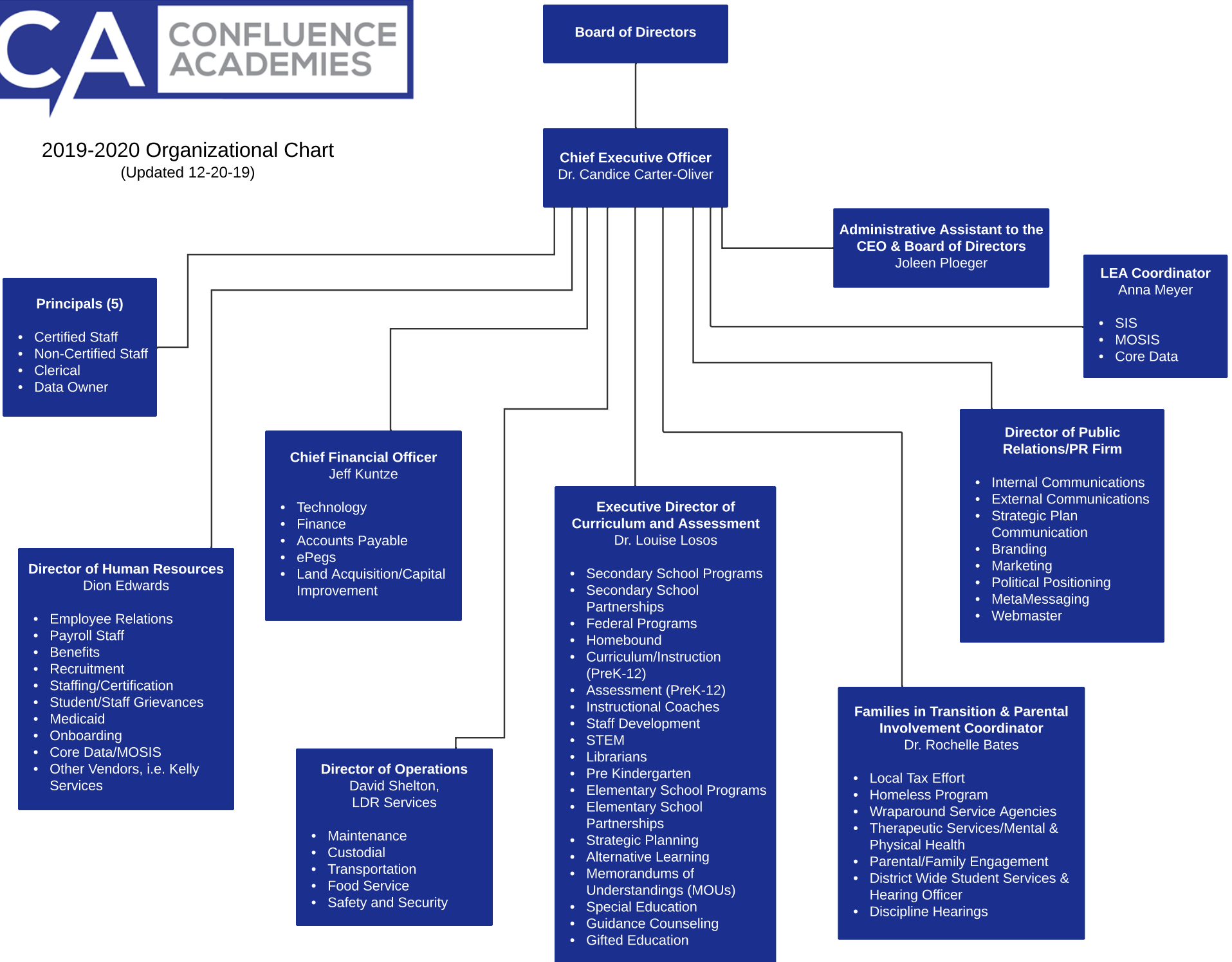




2019-2020 Organizational Chart
(Updated 12-20-19)



Board of Directors

Chief Executive Officer
Dr. Candice Carter-Oliver

**Administrative Assistant to the
CEO & Board of Directors**
Joleen Ploeger

LEA Coordinator
Anna Meyer

- SIS
- MOSIS
- Core Data

Principals (5)

- Certified Staff
- Non-Certified Staff
- Clerical
- Data Owner

Director of Human Resources
Dion Edwards

- Employee Relations
- Payroll Staff
- Benefits
- Recruitment
- Staffing/Certification
- Student/Staff Grievances
- Medicaid
- Onboarding
- Core Data/MOSIS
- Other Vendors, i.e. Kelly Services

Chief Financial Officer
Jeff Kuntze

- Technology
- Finance
- Accounts Payable
- ePegs
- Land Acquisition/Capital Improvement

Director of Operations
David Shelton,
LDR Services

- Maintenance
- Custodial
- Transportation
- Food Service
- Safety and Security

Executive Director of Curriculum and Assessment
Dr. Louise Losos

- Secondary School Programs
- Secondary School Partnerships
- Federal Programs
- Homebound
- Curriculum/Instruction (PreK-12)
- Assessment (PreK-12)
- Instructional Coaches
- Staff Development
- STEM
- Librarians
- Pre Kindergarten
- Elementary School Programs
- Elementary School Partnerships
- Strategic Planning
- Alternative Learning
- Memorandums of Understandings (MOUs)
- Special Education
- Guidance Counseling
- Gifted Education

Director of Public Relations/PR Firm

- Internal Communications
- External Communications
- Strategic Plan Communication
- Branding
- Marketing
- Political Positioning
- MetaMessaging
- Webmaster

Families in Transition & Parental Involvement Coordinator
Dr. Rochelle Bates

- Local Tax Effort
- Homeless Program
- Wraparound Service Agencies
- Therapeutic Services/Mental & Physical Health
- Parental/Family Engagement
- District Wide Student Services & Hearing Officer
- Discipline Hearings