

decoding

SUPPORT & ACCOUNTABILITY

DESIGNATIONS / REPORT CARD / IL-EMPOWER



Vision, Mission & Goals

ISBE engaged local stakeholders and communities to create a support & accountability system grounded in our ambitious long-term goals, vision for the state, and mission of supporting all students. These foundations guide our decision-making and serve as our North Star.

MISSION

Provide leadership and resources to achieve excellence across all Illinois districts by engaging legislators, school administrators, teachers, students, parents, families, and other stakeholders in formulating and advocating for policies that enhance education, empower districts, and ensure equitable outcomes for all students.

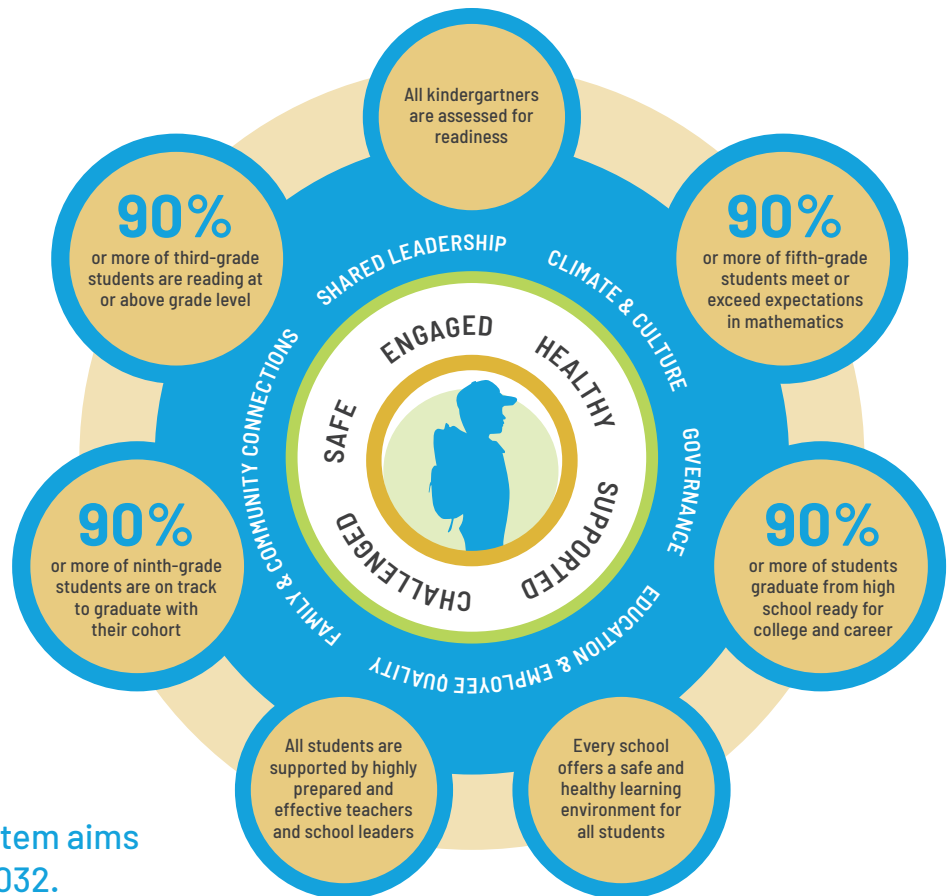
VISION

Illinois is a state of whole, healthy children nested in whole, healthy systems supporting communities wherein all people are socially and economically secure.

Our Support & Accountability system aims to meet our goals statewide by 2032.

RESEARCH-BASED GOALS

Every child in each public school system in the State of Illinois deserves to attend a system wherein...



Illinois
State Board of
Education

Visit

isbe.net/support



decoding

SUPPORT & ACCOUNTABILITY

DESIGNATIONS / REPORT CARD / IL-EMPOWER



Research-Based Goals Defined

Research tells us what all students need to thrive from pre-K through high school and onto purposeful lives. Every child in each public school system in the State of Illinois deserves to attend a system wherein...

90%

or more of third-grade students are reading at or above grade level

Students in third grade shift from "learning to read" to "reading to learn." A student who does not meet grade-level expectations for reading by third grade is four times less likely to graduate by age 19.²

All kindergartners are assessed for readiness

Children with higher levels of school readiness at age five are generally more successful in grade school, are less likely to drop out of high school, and earn more as adults.¹

90%

or more of fifth-grade students meet or exceed expectations in mathematics

Early math skills have the greatest predictive power for later success. Students far off track in mathematics in fourth grade have only a 10 percent chance of reaching college readiness benchmarks in eighth grade.³

All students are supported by highly prepared and effective teachers and school leaders

Teacher effectiveness is linked to students' college attendance, lifetime earnings, and retirement savings. Highly effective principals raise the achievement of a typical student in their schools by between two and seven months of learning in a single school year.⁷

90%

or more of ninth-grade students are on track to graduate with their cohort

The first year of high school poses a critical transition period for students. Students who finish the ninth grade on track are almost four times as likely to graduate from high school in four years as those students who do not.⁴

Every school offers a safe and healthy learning environment for all students

Student achievement is correlated with school safety and students' having trusting relationships with caring adults.⁸

90%

or more of students graduate from high school ready for college and career

By 2020, an estimated two-thirds of job openings will require postsecondary education or training.⁵

See citations on next page.



Illinois
State Board of
Education

Visit

isbe.net/support



decoding

SUPPORT & ACCOUNTABILITY

DESIGNATIONS / REPORT CARD / IL-EMPOWER



Our Goals: Sources

1. Duncan, G.J., Dowsett, C.J., Claessens, A., Magnuson, K., Huston, A.C., Klebanov, P., Pagani, L.S., Feinstein, L., Engel, M., Brooks-Gunn, J., Sexton, H., & Duckworth, K. (2007). School readiness and later achievement. *Developmental Psychology*.
2. Hernandez, D. J. (2011). *Double Jeopardy: How Third-Grade Reading Skills and Poverty Influence High School Graduation*. Anne E. Casey Foundation.
3. Dougherty, C., & Fleming, S. (2012). *Getting students on track to college and career readiness: How many catch up from far behind?* ACT.
4. Allensworth, E. & Easton, J.O. (2005). *The On-Track Indicator as a Predictor of High School Graduation*. UChicago Consortium on School Research.
5. Carnevale, A., Smith, N., & Strohl, J. (2013). *Recovery: Job Growth and Education Requirements Through 2020*. Georgetown Public Policy Institute Center on Education and the Workforce.
6. Steinberg, M.P., Allensworth, E., & Johnson, D.W. (2011). *Student and Teacher Safety in Chicago Public Schools: The Roles of Community Context and School Social Organization*. UChicago Consortium on School Research.
- 7a. Chetty, R., Friedman, J.N., & Rockoff, J.E. (2011). *The Long-Term Impacts of Teachers: Teacher Value-Added and Student Outcomes in Adulthood*. National Bureau of Economic Research.
- 7b. Branch, G.F., Hanushek, E.A. & Rivkin, S.G. (2013). *School Leaders Matter: Measuring the impact of effective principals*. *EducationNext*.



Illinois
State Board of
Education

Visit

isbe.net/support

