

Alliance Margaret M. Bloomfield Technology Academy High

School Accountability Report Card Reported Using Data from the 2017—18 School Year California Department of Education

By February 1 of each year, every school in California is required by state law to publish a School Accountability Report Card (SARC). The SARC contains information about the condition and performance of each California public school. Under the Local Control Funding Formula (LCFF) all local educational agencies (LEAs) are required to prepare a Local Control and Accountability Plan (LCAP), which describes how they intend to meet annual school-specific goals for all pupils, with specific activities to address state and local priorities. Additionally, data reported in an LCAP is to be consistent with data reported in the SARC.

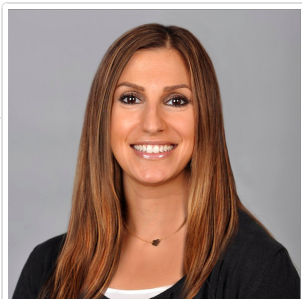
- For more information about SARC requirements, see the California Department of Education (CDE) SARC web page at <https://www.cde.ca.gov/ta/ac/sa/>.
- For more information about the LCFF or LCAP, see the CDE LCFF web page at <https://www.cde.ca.gov/fq/aa/lc/>.
- For additional information about the school, parents/guardians and community members should contact the school principal or the district office.

DataQuest

DataQuest is an online data tool located on the CDE DataQuest web page at <https://dq.cde.ca.gov/dataquest/> that contains additional information about this school and comparisons of the school to the district and the county. Specifically, DataQuest is a dynamic system that provides reports for accountability (e.g., test data, enrollment, high school graduates, dropouts, course enrollments, staffing, and data regarding English learners).

Internet Access

Internet access is available at public libraries and other locations that are publicly accessible (e.g., the California State Library). Access to the Internet at libraries and public locations is generally provided on a first-come, first-served basis. Other use restrictions may include the hours of operation, the length of time that a workstation may be used (depending on availability), the types of software programs available on a workstation, and the ability to print documents.



Dr. Ani Meymerian, Principal

📍 Principal, Alliance Margaret M. Bloomfield Technology Academy High

About Our School

Dear Students and Families,

Welcome to Alliance Margaret M. Bloomfield High School. It is a privilege to serve the families of Huntington Park and the greater Los Angeles area who are so deserving of a small, college-ready public school.

My commitment to each parent is that every child who attends Alliance Bloomfield High School for all four years will demonstrate academic achievement growth, will get accepted into a 4-year college, and will graduate ready for success in college. We are all committed to your child's future and success.

Contact

Alliance Margaret M. Bloomfield Technology Academy High
7907 Santa Fe Ave.
Huntington Park, CA 90255-6630

Phone: 323-537-2060
E-mail: ameymarian@laalliance.org

About This School

Contact Information (School Year 2018—19)

District Contact Information (School Year 2018—19)	
District Name	Los Angeles Unified
Phone Number	(213) 241-1000
Superintendent	Austin Beutner
E-mail Address	austin.beutner@lausd.net
Web Site	www.lausd.net

School Contact Information (School Year 2018—19)	
School Name	Alliance Margaret M. Bloomfield Technology Academy High
Street	7907 Santa Fe Ave.
City, State, Zip	Huntington Park, Ca, 90255-6630
Phone Number	323-537-2060
Principal	Dr. Ani Meymerian, Principal
E-mail Address	ameymarian@laalliance.org
Web Site	http://bloomfieldhs.org
County-District-School (CDS) Code	19647330124941

Last updated: 12/19/2018

School Description and Mission Statement (School Year 2018—19)

Alliance Margaret M. Bloomfield Technology Academy High is part of a network of independent public charter schools that provide world-class educational services to address the unique needs of each student.

Alliance schools are tuition-free public schools that serve all students including those with special needs. Alliance schools have been recognized as among the best in the nation in preparing students to enter and succeed in college and significantly outperforming neighboring public schools through an educational model based on:

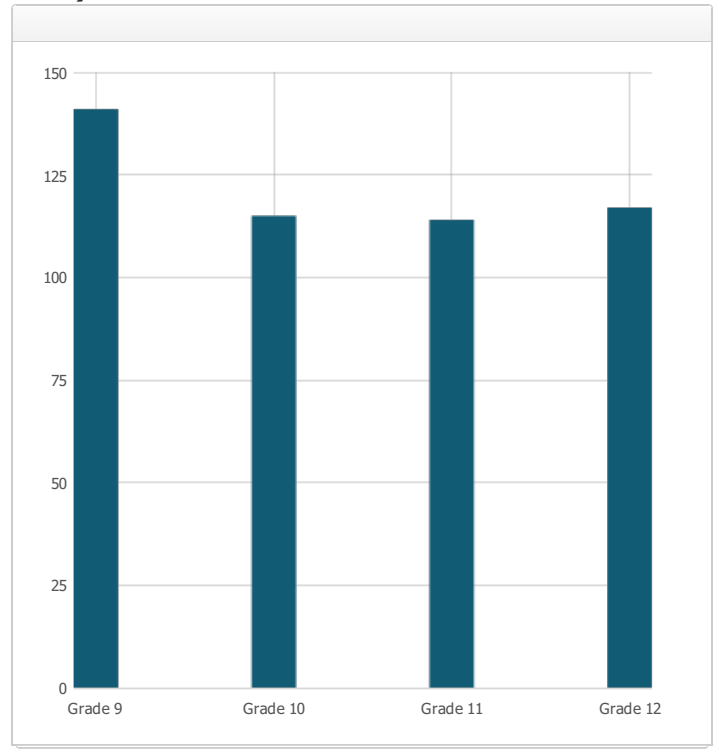
- high expectations for all students
- small and personalized campuses
- longer school year and a longer instructional day
- highly qualified teachers and principals
- parents as partners in their child's educational success

Together the teachers and staff of Alliance Margaret M. Bloomfield Technology Academy High are working with our community to create a safe and harmonious school that will prepare our students realize their full potential.

Last updated: 12/19/2018

Student Enrollment by Grade Level (School Year 2017—18)

Grade Level	Number of Students
Grade 9	141
Grade 10	115
Grade 11	114
Grade 12	117
Total Enrollment	487



Last updated: 12/19/2018

Student Enrollment by Student Group (School Year 2017—18)

Student Group	Percent of Total Enrollment
Black or African American	0.4 %
American Indian or Alaska Native	%
Asian	0.2 %
Filipino	%
Hispanic or Latino	97.5 %
Native Hawaiian or Pacific Islander	0.2 %
White	0.2 %
Two or More Races	%
Other	1.5 %
Student Group (Other)	Percent of Total Enrollment
Socioeconomically Disadvantaged	95.5 %
English Learners	15.8 %
Students with Disabilities	12.5 %
Foster Youth	0.4 %

A. Conditions of Learning

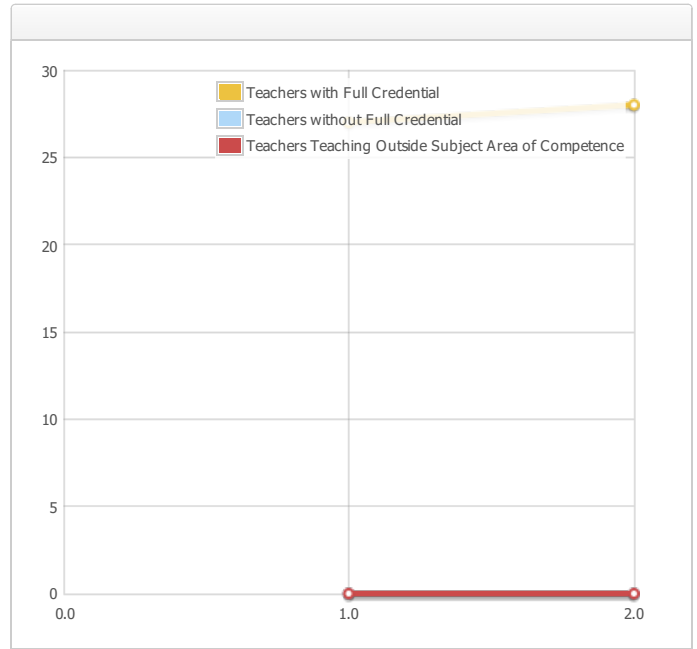
State Priority: Basic

The SARC provides the following information relevant to the State priority: Basic (Priority 1):

- Degree to which teachers are appropriately assigned and fully credentialed in the subject area and for the pupils they are teaching;
- Pupils have access to standards-aligned instructional materials; and
- School facilities are maintained in good repair

Teacher Credentials

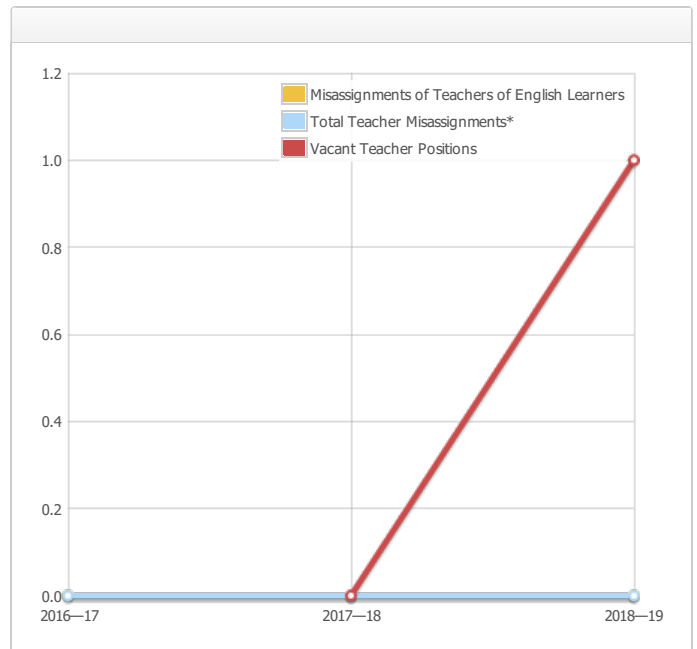
Teachers	School 2016—17	School 2017—18	School 2018—19	District 2018—19
With Full Credential		27	28	
Without Full Credential		0	0	
Teachers Teaching Outside Subject Area of Competence (with full credential)		0	0	



Last updated: 12/19/2018

Teacher Misassignments and Vacant Teacher Positions

Indicator	2016—17	2017—18	2018—19
Misassignments of Teachers of English Learners	0	0	0
Total Teacher Misassignments*	0	0	0
Vacant Teacher Positions		0	1



Note: "Misassignments" refers to the number of positions filled by teachers who lack legal authorization to teach that grade level, subject area, student group, etc.

* Total Teacher Misassignments includes the number of Misassignments of Teachers of English Learners.

Last updated: 1/8/2019

School Facility Conditions and Planned Improvements

The Facilities Department conducts numerous inspections yearly on school safety and overall general conditions of our campus. These inspections ensure that our facilities are kept safe and clean for students, families and staff.

Last updated: 12/21/2018

School Facility Good Repair Status

Year and month of the most recent FIT report: September 2018

System Inspected	Rating	Repair Needed and Action Taken or Planned
Systems: Gas Leaks, Mechanical/HVAC, Sewer	Good	
Interior: Interior Surfaces	Good	
Cleanliness: Overall Cleanliness, Pest/Vermin Infestation	Good	
Electrical: Electrical	Good	
Restrooms/Fountains: Restrooms, Sinks/Fountains	Good	
Safety: Fire Safety, Hazardous Materials	Good	
Structural: Structural Damage, Roofs	Good	
External: Playground/School Grounds, Windows/Doors/Gates/Fences	Good	

Overall Facility Rate

Year and month of the most recent FIT report: September 2018

Overall Rating	Good
----------------	------

Last updated: 12/19/2018

B. Pupil Outcomes

State Priority: Pupil Achievement

The SARC provides the following information relevant to the State priority: Pupil Achievement (Priority 4):

- **Statewide assessments** (i.e., California Assessment of Student Performance and Progress [CAASPP] System, which includes the Smarter Balanced Summative Assessments for students in the general education population and the California Alternate Assessments [CAAs] for English language arts/literacy [ELA] and mathematics given in grades three through eight and grade eleven. Only eligible students may participate in the administration of the CAAs. CAAs items are aligned with alternate achievement standards, which are linked with the Common Core State Standards [CCSS] for students with the most significant cognitive disabilities); and
- The percentage of students who have successfully completed courses that satisfy the requirements for entrance to the University of California and the California State University, or career technical education sequences or programs of study.

CAASPP Test Results in ELA and Mathematics for All Students Grades Three through Eight and Grade Eleven Percentage of Students Meeting or Exceeding the State Standard

Subject	School 2016—17	School 2017—18	District 2016—17	District 2017—18	State 2016—17	State 2017—18
English Language Arts / Literacy (grades 3-8 and 11)	79.0%	84.0%	40.0%	43.0%	48.0%	50.0%
Mathematics (grades 3-8 and 11)	37.0%	25.0%	30.0%	32.0%	37.0%	38.0%

Note: Percentages are not calculated when the number of students tested is ten or less, either because the number of students in this category is too small for statistical accuracy or to protect student privacy.

Note: ELA and Mathematics test results include the Smarter Balanced Summative Assessment and the CAA. The "Percent Met or Exceeded" is calculated by taking the total number of students who met or exceeded the standard on the Smarter Balanced Summative Assessment plus the total number of students who met the standard (i.e., achieved Level 3-Alternate) on the CAAs divided by the total number of students who participated in both assessments.

Last updated: 12/19/2018

CAASPP Test Results in ELA by Student Group Grades Three through Eight and Grade Eleven (School Year 2017—18)

CAASPP Assessment Results – English Language Arts (ELA)

Disaggregated by Student Groups, Grades Three Through Eight and Grade Eleven

Student Group	Total Enrollment	Number Tested	Percent Tested	Percent Met or Exceeded
All Students	117	114	97.44%	84.21%
Male	54	51	94.44%	74.51%
Female	63	63	100.00%	92.06%
Black or African American				
American Indian or Alaska Native				
Asian				
Filipino				
Hispanic or Latino	114	112	98.25%	83.93%
Native Hawaiian or Pacific Islander				
White				
Two or More Races				
Socioeconomically Disadvantaged	114	112	98.25%	85.71%
English Learners	22	19	86.36%	42.11%
Students with Disabilities	15	12	80.00%	25.00%
Students Receiving Migrant Education Services				
Foster Youth	--	--	--	

Note: ELA test results include the Smarter Balanced Summative Assessment and the CAA. The "Percent Met or Exceeded" is calculated by taking the total number of students who met or exceeded the standard on the Smarter Balanced Summative Assessment plus the total number of students who met the standard (i.e., achieved Level 3–Alternate) on the CAAs divided by the total number of students who participated in both assessments.

Note: Double dashes (--) appear in the table when the number of students is ten or less, either because the number of students in this category is too small for statistical accuracy or to protect student privacy.

Note: The number of students tested includes all students who participated in the test whether they received a score or not; however, the number of students tested is not the number that was used to calculate the achievement level percentages. The achievement level percentages are calculated using only students who received scores.

Last updated: 12/19/2018

CAASPP Test Results in Mathematics by Student Group Grades Three through Eight and Grade Eleven (School Year 2017—18)

CAASPP Test Results in Mathematics

Disaggregated by Student Group, Grades Three Through Eight and Grade Eleven

Student Group	Total Enrollment	Number Tested	Percent Tested	Percent Met or Exceeded
All Students	117	113	96.58%	24.78%
Male	54	50	92.59%	20.00%
Female	63	63	100.00%	28.57%
Black or African American				
American Indian or Alaska Native				
Asian				
Filipino				
Hispanic or Latino	114	111	97.37%	24.32%
Native Hawaiian or Pacific Islander				
White				
Two or More Races				
Socioeconomically Disadvantaged	114	111	97.37%	25.23%
English Learners	22	18	81.82%	11.11%
Students with Disabilities	15	12	80.00%	
Students Receiving Migrant Education Services				
Foster Youth	--	--	--	

Note: Mathematics test results include the Smarter Balanced Summative Assessment and the CAA. The "Percent Met or Exceeded" is calculated by taking the total number of students who met or exceeded the standard on the Smarter Balanced Summative Assessment plus the total number of students who met the standard (i.e., achieved Level 3–Alternate) on the CAAs divided by the total number of students who participated in both assessments.

Note: Double dashes (--) appear in the table when the number of students is ten or less, either because the number of students in this category is too small for statistical accuracy or to protect student privacy.

Note: The number of students tested includes all students who participated in the test whether they received a score or not; however, the number of students tested is not the number that was used to calculate the achievement level percentages. The achievement level percentages are calculated using only students who received scores.

Last updated: 12/19/2018

**CAASPP Test Results in Science for All Students
Grades Five, Eight and High School
Percentage of Students Meeting or Exceeding the State Standard**

Html.RenderAction("SarcDescription", new { sectionID = 80, cdscode = ViewBag.Cdscode });

Subject	School 2016–17	School 2017–18	District 2016–17	District 2017–18	State 2016–17	State 2017–18
Science (grades 5, 8, and high school)	N/A	N/A	N/A	N/A	N/A	N/A

Note: Cells with N/A values do not require data.

Note: The 2016–17 and 2017–18 data are not available. The CDE is developing a new science assessment based on the Next Generation Science Standards for California Public Schools (CA NGSS). The new California Science Test (CAST) was pilot-tested in spring 2017 and field-tested in spring 2018. The CAST will be administered operationally during the 2018–19 school year. The CAA for Science was pilot-tested for two years (i.e., 2016–17 and 2017–18) and the CAA for Science will be field-tested in 2018–19.

Note: Science test results include the CAST and the CAA for Science. The "Percent Met or Exceeded" is calculated by taking the total number of students who met or exceeded the standard on the CAST plus the total number of students who met the standard (i.e., achieved Level 3–Alternate) on the CAA for Science divided by the total number of students who participated on both assessments.

Last updated: 12/19/2018

Courses for University of California (UC) and/or California State University (CSU) Admission

UC/CSU Course Measure	Percent
2017–18 Pupils Enrolled in Courses Required for UC/CSU Admission	100.0%
2016–17 Graduates Who Completed All Courses Required for UC/CSU Admission	--

State Priority: Other Pupil Outcomes

The SARC provides the following information relevant to the State priority: Other Pupil Outcomes (Priority 8):

- Pupil outcomes in the subject area of physical education

California Physical Fitness Test Results (School Year 2017–18)

Grade Level	Percentage of Students Meeting Four of Six Fitness Standards	Percentage of Students Meeting Five of Six Fitness Standards	Percentage of Students Meeting Six of Six Fitness Standards
9	21.2%	16.6%	4.6%

Note: Percentages are not calculated when the number of students tested is ten or less, either because the number of students in this category is too small for statistical accuracy or to protect student privacy.

Last updated: 1/18/2019

C. Engagement

State Priority: Parental Involvement

The SARC provides the following information relevant to the State priority: Parental Involvement (Priority 3):

- Efforts the school district makes to seek parent input in making decisions for the school district and each school site

Opportunities for Parental Involvement (School Year 2018—19)

Parental support and involvement are key components in students' academic success and we believe that it is essential for parents to be knowledgeable about preparing their student to enter and complete college. Parents are considered partners in our mission and are encouraged to take an active and meaningful role to ensure the success of the school. Research shows that parent involvement in children's learning positively impacts student achievement. We believe that parent participation is really making a difference and is positively impacting student academic progress and future college success.

We encourage all parents, legal guardians, and adult family members to become actively involved by in the school's educational program. Their time, talent and enthusiasm are an integral part of the day-to-day functioning of the school and the overall academic development of their student.

There are a number of ways parents and guardians may get involved and demonstrate their commitment at school and at home. School support activities include office support, campus and field trip supervision, including taking on leadership roles on school committees and creating parent support groups. Parents also provide regular feedback and take part in decision-making through their participation in school governance and LCAP stakeholder engagement meetings. Academic support activities include weekly and/or monthly Saturday parent workshop and parent-teacher conference participation, along with classroom and tutoring support.

State Priority: Pupil Engagement

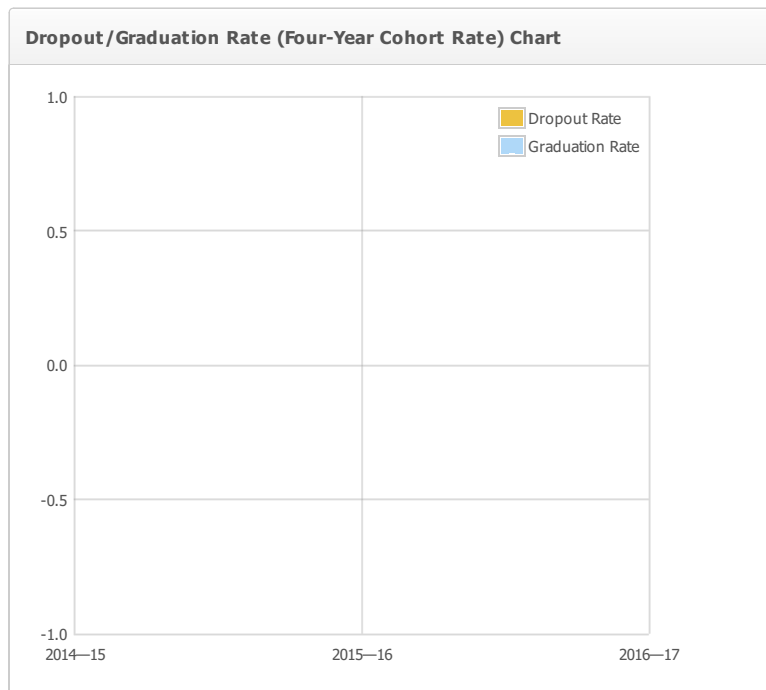
The SARC provides the following information relevant to the State priority: Pupil Engagement (Priority 5):

- High school dropout rates; and
- High school graduation rates

Dropout Rate and Graduation Rate (Four-Year Cohort Rate)

Indicator	School 2014—15	School 2015—16	District 2014—15	District 2015—16	State 2014—15	State 2015—16
Dropout Rate	--	--	16.7%	13.7%	10.7%	9.7%
Graduation Rate	--	--	72.2%	77.3%	82.3%	83.8%

Indicator	School 2016—17	District 2016—17	State 2016—17
Dropout Rate	--	10.8%	9.1%
Graduation Rate	--	79.7%	82.7%



For the formula to calculate the 2016—17 adjusted cohort graduation rate, see the 2017—18 Data Element Definitions document located on the SARC web page at <https://www.cde.ca.gov/ta/ac/sa/>.

Completion of High School Graduation Requirements - Graduating Class of 2017 (One-Year Rate)

Student Group	School	District	State
All Students	--	--	--
Black or African American	--	--	--
American Indian or Alaska Native	--	--	--
Asian	--	--	--
Filipino	--	--	--
Hispanic or Latino	--	--	--
Native Hawaiian or Pacific Islander	--	--	--
White	--	--	--
Two or More Races	--	--	--
Socioeconomically Disadvantaged	--	--	--
English Learners	--	--	--
Students with Disabilities	--	--	--
Foster Youth	--	--	--

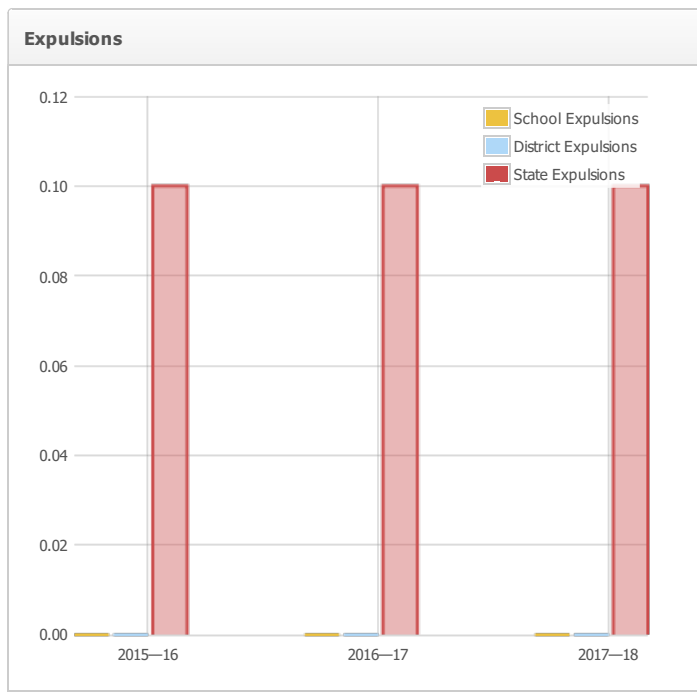
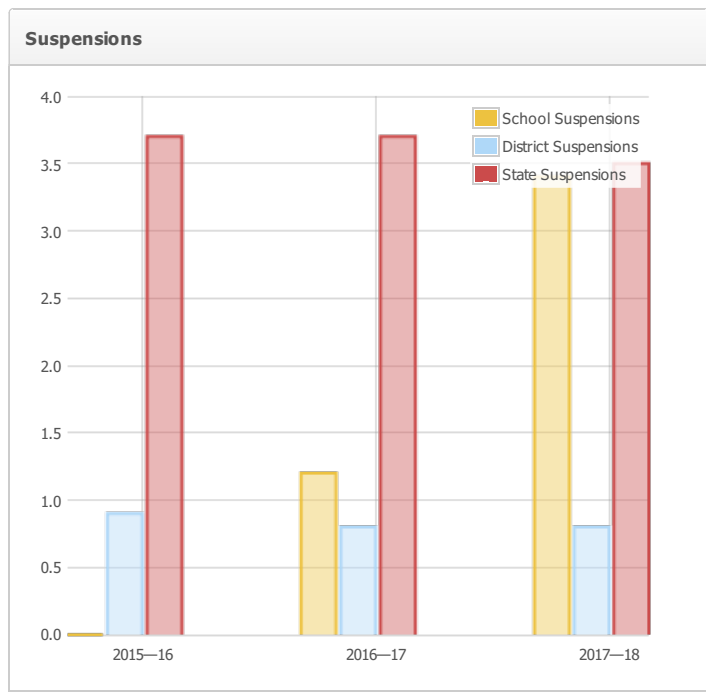
State Priority: School Climate

The SARC provides the following information relevant to the State priority: School Climate (Priority 6):

- Pupil suspension rates;
- Pupil expulsion rates; and
- Other local measures on the sense of safety

Suspensions and Expulsions

	School	School	School	District	District	District	State	State	State
Rate	2015—16	2016—17	2017—18	2015—16	2016—17	2017—18	2015—16	2016—17	2017—18
Suspensions	--	1.2%	3.4%	0.9%	0.8%	0.8%	3.7%	3.7%	3.5%
Expulsions	--	0.0%	0.0%	0.0%	0.0%	0.0%	0.1%	0.1%	0.1%



Last updated: 12/19/2018

School Safety Plan (School Year 2018—19)

The School Safety Plan covers - policies and expectations regarding the practices at the school in maintaining the safety and security of students, staff members and the physical campus, responding appropriately to emergencies, and creating a safe and orderly environment that is conducive to learning. The Plan is reviewed and updated annually and school employees are trained annually as well.

Last updated: 12/19/2018

D. Other SARC Information

The information in this section is required to be in the SARC but is not included in the state priorities for LCFF.

Average Class Size and Class Size Distribution (Elementary) School Year (2015—16)

Grade Level	Average Class Size	Number of Classes * 1-20	Number of Classes * 21-32	Number of Classes * 33+
K				
1				
2				
3				
4				
5				
6				
Other**				

* Number of classes indicates how many classes fall into each size category (a range of total students per class).

** "Other" category is for multi-grade level classes.

Average Class Size and Class Size Distribution (Elementary) School Year (2016—17)

Grade Level	Average Class Size	Number of Classes * 1-20	Number of Classes * 21-32	Number of Classes * 33+
K				
1				
2				
3				
4				
5				
6				
Other**				

* Number of classes indicates how many classes fall into each size category (a range of total students per class).

** "Other" category is for multi-grade level classes.

Average Class Size and Class Size Distribution (Elementary) School Year (2017—18)

Grade Level	Average Class Size	Number of Classes * 1-20	Number of Classes * 21-32	Number of Classes * 33+
K				
1				
2				
3				
4				
5				
6				
Other**				

* Number of classes indicates how many classes fall into each size category (a range of total students per class).

** "Other" category is for multi-grade level classes.

Average Class Size and Class Size Distribution (Secondary) (School Year 2015—16)

Subject	Average Class Size	Number of Classes * 1-20	Number of Classes * 21-32	Number of Classes * 33+
English	25.0	5	14	2
Mathematics	24.0	6	9	
Science	28.0	2	8	
Social Science	27.0		5	

* Number of classes indicates how many classrooms fall into each size category (a range of total students per classroom). At the secondary school level, this information is reported by subject area rather than grade level.

Average Class Size and Class Size Distribution (Secondary) (School Year 2016—17)

Subject	Average Class Size	Number of Classes * 1-20	Number of Classes * 21-32	Number of Classes * 33+
English	22.0	11	14	
Mathematics	23.0	9	22	
Science	24.0	4	12	
Social Science	25.0	3	7	

* Number of classes indicates how many classrooms fall into each size category (a range of total students per classroom). At the secondary school level, this information is reported by subject area rather than grade level.

Average Class Size and Class Size Distribution (Secondary) (School Year 2017—18)

Subject	Average Class Size	Number of Classes * 1-20	Number of Classes * 21-32	Number of Classes * 33+
English	24.0	11	18	1
Mathematics	23.0	11	19	1
Science	24.0	5	14	
Social Science	25.0	6	12	1

* Number of classes indicates how many classrooms fall into each size category (a range of total students per classroom). At the secondary school level, this information is reported by subject area rather than grade level.

Last updated: 12/19/2018

Academic Counselors and Other Support Staff (School Year 2017—18)

Title	Number of FTE* Assigned to School	Average Number of Students per Academic Counselor
Academic Counselor	3.0	
Counselor (Social/Behavioral or Career Development)	0.0	N/A
Library Media Teacher (Librarian)	0.0	N/A
Library Media Services Staff (Paraprofessional)	0.0	N/A
Psychologist	0.0	N/A
Social Worker	0.0	N/A
Nurse	0.0	N/A
Speech/Language/Hearing Specialist	0.0	N/A
Resource Specialist (non-teaching)	0.0	N/A
Other	0.0	N/A

Note: Cells with N/A values do not require data.

*One Full Time Equivalent (FTE) equals one staff member working full time; one FTE could also represent two staff members who each work 50 percent of full time.

Last updated: 12/19/2018

Expenditures Per Pupil and School Site Teacher Salaries (Fiscal Year 2016—17)

Level	Total Expenditures Per Pupil	Expenditures Per Pupil (Restricted)	Expenditures Per Pupil (Unrestricted)	Average Teacher Salary
School Site	\$14963.4	\$2995.0	\$11968.4	\$63921.6
District	N/A	N/A	--	\$75094.0
Percent Difference – School Site and District	N/A	N/A	--	--
State	N/A	N/A	\$6574.0	\$80764.0
Percent Difference – School Site and State	N/A	N/A	--	--

Note: Cells with N/A values do not require data.

Last updated: 12/19/2018

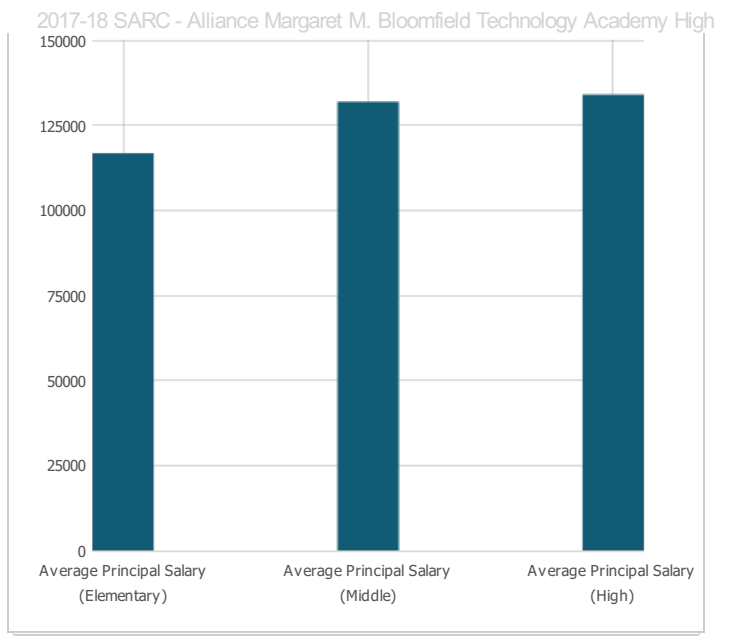
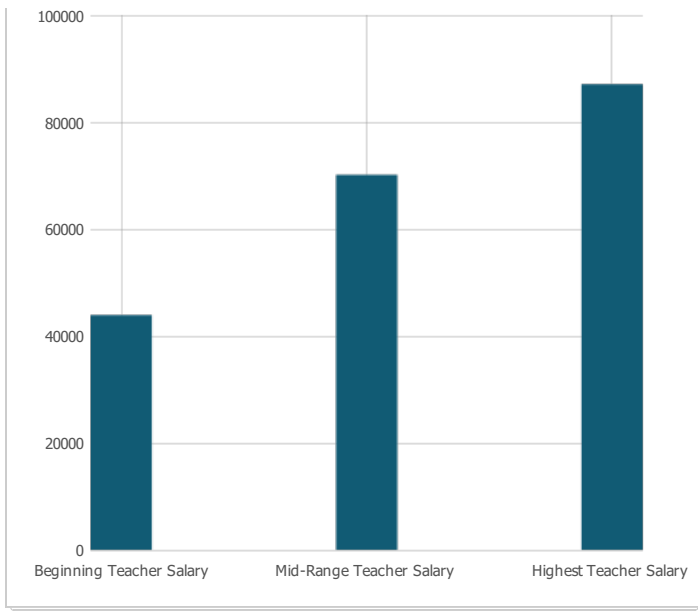
Teacher and Administrative Salaries (Fiscal Year 2016—17)

Category	District Amount	State Average For Districts In Same Category
Beginning Teacher Salary	\$43,913	\$47,903
Mid-Range Teacher Salary	\$70,141	\$74,481
Highest Teacher Salary	\$87,085	\$98,269
Average Principal Salary (Elementary)	\$116,726	\$123,495
Average Principal Salary (Middle)	\$131,879	\$129,482
Average Principal Salary (High)	\$133,989	\$142,414
Superintendent Salary	\$350,000	\$271,429
Percent of Budget for Teacher Salaries	31.0%	35.0%
Percent of Budget for Administrative Salaries	5.0%	5.0%

For detailed information on salaries, see the CDE Certificated Salaries & Benefits web page at <https://www.cde.ca.gov/ds/fd/cs/>.

Teacher Salary Chart

Principal Salary Chart



Last updated: 12/19/2018

Advanced Placement (AP) Courses (School Year 2017—18)

Subject	Number of AP Courses Offered*	Percent of Students In AP Courses
Computer Science	0	N/A
English	2	N/A
Fine and Performing Arts	0	N/A
Foreign Language	3	N/A
Mathematics	0	N/A
Science	1	N/A
Social Science	3	N/A
All Courses	9	20.3%

Note: Cells with N/A values do not require data.

*Where there are student course enrollments of at least one student.

Last updated: 12/19/2018

Professional Development

Teachers participate in a 5-day professional development seminar before the opening of school. Ongoing professional and personal growth opportunities are conducted on a weekly basis at the school site. Teachers analyze student achievement data and identify student growth needs and interests. Teachers benefit most from professional development that provides time for teacher-to-teacher interaction in small learning communities focused on classroom practice. Our teachers have ongoing regular time for common planning, analysis of student work, and unit study based on core content standards. Teachers use instructional guides in core content areas and use data from quarterly benchmark assessments to re-teach low performing content standards.

Last updated: 12/19/2018