





**PINECREST**

# AUGUST

“Ability may get you to the top but it’s character that will keep you there.”

MONDAY	TUESDAY	WEDNESDAY	THURSDAY	FRIDAY	SATURDAY	SUNDAY
			<b>1</b>	<b>2</b>	<b>3</b>	<b>4</b>
<b>5</b>	<b>6</b>	<b>7</b>	<b>8</b>	<b>9</b>	<b>10</b>	<b>11</b>
<b>12</b>	<b>13</b>	<b>14</b>	<b>15</b>	<b>16</b> Staff Integration Workshop	<b>17</b>	<b>18</b>
Teachers' Training						
<b>19</b>	<b>20</b>	<b>21</b>	<b>22</b>	<b>23</b>	<b>24</b>	<b>25</b>
Teachers' Training						
<b>26</b> PS, LS & JHS Book Delivery Welcome to New Students HS Back to School	<b>27</b> LS & JHS Back to School K3 PS Getting to Know You 9:00 a.m.	<b>28</b> K2 PS Getting to Know You 8:00 a.m. K1 PS Getting to Know you 11:00 a.m. Escuela Promesa	<b>29</b> LS, JHS & HS New Students Parents' Conference K1, K2 & K3 Back to School	<b>30</b> B2 & B3 Getting to Know You 9:00 a.m. PineToddlers Getting to Know You 11:00 a.m.	<b>31</b>	
LS, JHS, HS Sports Academies Promotion						



**FRIENDSHIP**



**PINECREST**

# SEPTEMBER

“Ability may get you to the top but it’s character that will keep you there.”

MONDAY	TUESDAY	WEDNESDAY	THURSDAY	FRIDAY	SATURDAY	SUNDAY
<b>2</b> B2, B3 & PineToddlers Back to School Early Dismissal 11:00 a.m.	<b>3</b> Invitation to Poetry & Oratory Contest B2 & B3 Early Dismissal 11:30	<b>4</b> JHS Getting to Know You 8:00 a.m. B2 & B3 Early Dismissal 12:00 p.m.	<b>5</b> HS Getting to Know You 8:00 a.m.	<b>6</b> First Friday Mass	<b>7</b> Misions Day (Familia Misionera)	<b>1</b>
PS Academies Promotion						<b>8</b>
LS, JHS, & HS Cultural Academies Promotion						
<b>9</b> Start of Hops Cup BOYS 1 <sup>o</sup> & 2 <sup>o</sup> LS Getting to Know You 8:00 a.m.	<b>10</b> 3 <sup>o</sup> & 4 <sup>o</sup> LS Getting to Know You 8:00 a.m.	<b>11</b> Room Mothers' Welcome Breakfast	<b>12</b> 5 <sup>o</sup> & 6 <sup>o</sup> LS Getting to Know You 8:00 a.m.	<b>13</b> Deadline of enrollment and payment of Academies	<b>14</b>	<b>15</b>
PS Academies Promotion						
MAP						
PS, LS, JHS & HS Diagnostic Evaluation						
LS, JHS & HS Bullying Prevention Workshops						
<b>16</b> NO SCHOOL Independence Day	<b>17</b>	<b>18</b> Staff School Picture Day 8 <sup>o</sup> JHS Mass Generation Mass	<b>19</b> PS School Picture Day 1 <sup>o</sup> LS Parents' Sexual Education 7:40 a.m. 1 <sup>o</sup> LS Mother - Daughter & Father - Son 9:00 a.m.	<b>20</b> LS, JHS, & HS School Picture Day	<b>21</b>	<b>22</b>
PS Diagnostic Evaluation / No Academies (Enrollment)						
MAP						
LS, JHS & HS Bullying Prevention Workshops						
Mano Amiga "Sonrias que Transforman" Campaign						
<b>23</b> PS Starts Academies	<b>24</b>	<b>25</b> Escuela Promesa	<b>26</b> LS Parents' Magna Conference	<b>27</b> JHS & HS Parents' Magna Conference	<b>28</b>	<b>29</b>
11 <sup>o</sup> HS Get-Together			HS 1st Evaluation Period			
Coordinators' Seminar						
Mano Amiga "Sonrias que Transforman" Campaign						
Couple's Get-Together (Reignum Christi)						
<b>30</b>						



**FRIENDSHIP**



**PINECREST**

# OCTOBER

“Ability may get you to the top but it’s character that will keep you there.”

MONDAY	TUESDAY	WEDNESDAY	THURSDAY	FRIDAY	SATURDAY	SUNDAY
	<b>1</b> LS & JHS 1st Partial Report 11 <sup>o</sup> HS Generation Mass	<b>2</b> 7 <sup>o</sup> JHS Generation Mass	<b>3</b>	<b>4</b> NO SCHOOL Teachers' Training Course First Friday	<b>5</b>	<b>6</b>
	1 <sup>o</sup> & 2 <sup>o</sup> LS Mother & Daughter Get-Together		3 <sup>o</sup> & 4 <sup>o</sup> LS Get-Together			
<b>7</b> Start of Hops Cup GIRLS	<b>8</b> LS, JHS & HS Solemn Rosary 8:00 a.m.	<b>9</b> 2 <sup>o</sup> LS Parents' Sexual Education 7:40 a.m. 2 <sup>o</sup> LS Mother - Daughter & Father-Son 9:00 a.m. 9 <sup>o</sup> JHS Generation Mass	<b>10</b> 11 <sup>o</sup> & 12 <sup>o</sup> HS O.V. Day (Anáhuac) 6 <sup>o</sup> LS Parents' Sexual Education 7:40 a.m. 6 <sup>o</sup> LS Mother - Daughter & Father-Son 9:00 a.m.	<b>11</b>	<b>12</b> Pinecrest's Preschool Soccer Cup (Promotion Activity)	<b>13</b>
"JHS & HS 1st Evaluation Period of "Lectores en Red y Plan de lectura"						
<b>14</b> 7 <sup>o</sup> JHS GIRLS Workshop	<b>15</b> HS Report Cards 12 <sup>o</sup> HS Generation Mass 3 <sup>o</sup> LS Parents' Sexual Education 7:40 a.m. 3 <sup>o</sup> LS Mother - Daughter & Father-Son 9:00 a.m.	<b>16</b> 8 <sup>o</sup> JHS GIRLS Community Service 11 <sup>o</sup> HS Generation Mass	<b>17</b>	<b>18</b> PS Living Rosary 12:00 p.m.	<b>19</b>	<b>20</b>
		7 <sup>o</sup> JHS Get-Together				
<b>21</b> 7 <sup>o</sup> JHS BOYS Workshop	<b>22</b>	<b>23</b> 8 <sup>o</sup> JHS BOYS Community Service I. Camarena L.C. Conference 8:00 a.m.	<b>24</b> LS Poetry Contest	<b>25</b>	<b>26</b>	<b>27</b>
<b>28</b>	<b>29</b>	<b>30</b> JHS Humanities Fair Confirmation Meeting for Parents & Godparents 7:30 p.m. Escuela Promesa	<b>31</b>	PS All Faithful Departed Altars (Altars de Muertos)		
10 <sup>o</sup> HS Get-Together						
LS & JHS 1st Evaluation Period						



**FRIENDSHIP**



**PINECREST**

# NOVEMBER

“The secret of success is constancy to purpose”

MONDAY	TUESDAY	WEDNESDAY	THURSDAY	FRIDAY	SATURDAY	SUNDAY
				<b>1</b> First Friday Mass Confirmation Students' Retreat  LS & JHS 1st Evaluation Period	<b>2</b>	<b>3</b>
			PS All Faithful Departed Altars (Altars de Muertos)			
<b>4</b>	<b>5</b> 5º LS Parents' Sexual Education 7:40 a.m. 5º LS Mother - Daughter & Father - Son 9:00 a.m.	<b>6</b>	<b>7</b> 4º LS Parents' Sexual Education 7:40 a.m. 4º LS Mother - Daughter & Father - Son 9:00 a.m.	<b>8</b> Pinecrest Confirmations 4:00 p.m.	<b>9</b>	<b>10</b>
LS & JHS 1st Evaluation Period						
HS 2nd Evaluation Period						
<b>11</b> Farewell TDLA 2019 Participants	<b>12</b> 6º LS visit to Teletón 5º LS GIRLS Group Mass	<b>13</b> 12º HS Generation Mass	<b>14</b>	<b>15</b> NO SCHOOL Teachers' Training Course Advent Retreat	<b>16</b> Casino Night (Familia Misionera)	<b>17</b>
HS 2nd Evaluation Period			TDLA 2019 AGUASCALIENTES			
<b>18</b> NO SCHOOL Mexican Revolution	<b>19</b> 5º LS BOYS Group Mass	<b>20</b>	<b>21</b> PS, LS & JHS Report Cards	<b>22</b>	<b>23</b>	<b>24</b>
TDLA 2019 AGUASCALIENTES		BRISA				
JHS Recovery Exams						
<b>25</b> Welcome TDLA 2019 participants	<b>26</b> HS Report Cards	<b>27</b> HS List of Exempt Students Couple's Advent Retreat Escuela Promesa	<b>28</b> LS Oratory Contest	<b>29</b>	<b>30</b>	
JHS & HS 2nd Evaluation Period of Lectores en Red y Plan de lectura						
BRISA						
Misiones de Navidad						



**CONSTANCY**



**PINECREST**

# DECEMBER

“The secret of success is constancy to prurpose”

MONDAY	TUESDAY	WEDNESDAY	THURSDAY	FRIDAY	SATURDAY	SUNDAY
						<b>1</b> 1st Advent Sunday
<b>2</b>	<b>3</b>	<b>4</b> 7 <sup>o</sup> JHS Community Service	<b>5</b> Advent Retreat for Mothers	<b>6</b> First Friday Mass	<b>7</b> 5 <sup>o</sup> LS Maintenance Christmas Posada 9:00 a.m.	<b>8</b> 2nd Advent Sunday
BRISA						
HS Semestral Evaluation						
<b>9</b>	<b>10</b>	<b>11</b> 9 <sup>o</sup> JHS Community Service	<b>12</b> NO SCHOOL Our Lady of Guadalupe PS Christmas Play 6:00 p.m.	<b>13</b> Christmas Celebration	<b>14</b>	<b>15</b> 3rd Advent Sunday
HS Semestral Evaluation						
<b>16</b>	<b>17</b>	<b>18</b> Last day of Academies	<b>19</b> Early Dismissal Staff Christmas Cocktail	<b>20</b> NO SCHOOL Teachers' Training Course	<b>21</b>	<b>22</b> 4th Advent Sunday
<b>23</b>	<b>24</b>	<b>25</b> Nativity of our Lord	<b>26</b>	<b>27</b>	<b>28</b>	<b>29</b>
<b>30</b>	<b>31</b> New Years Eve					



**CONSTANCY**



**PINECREST**

# JANUARY

“We are not obedient because we are blind, we are obedient because we can see”

MONDAY	TUESDAY	WEDNESDAY	THURSDAY	FRIDAY	SATURDAY	SUNDAY
		<b>1</b>	<b>2</b>	<b>3</b> First Friday	<b>4</b>	<b>5</b>
<b>6</b> Epiphany of Our Lord	<b>7</b> Staff Back to School	<b>8</b> Back to School	<b>9</b> HS Report Cards & Extraordinary Exams Letters	<b>10</b>	<b>11</b>	<b>12</b>
<b>13</b>	<b>14</b> 4° LS BOYS Group Mass	<b>15</b>	<b>16</b>	<b>17</b>	<b>18</b>	<b>19</b>
HS Extraordinary Exams						
LS, JHS, & HS Academies Promotion						
<b>20</b>	<b>21</b>	<b>22</b>	<b>23</b> Visit to Our Lady of Guadalupe's Basilica 11:00 a.m.	<b>24</b>	<b>25</b>	<b>26</b> Carrera Pinecrest (Promotion Activity)
MAP						
HS Extraordinary Exams						
<b>27</b>	<b>28</b> JHS Parents, Students & Teachers' Meeting	<b>29</b> LS NO SCHOOL LS Parents & Teachers' Meeting Escuela Promesa Electronics Campaign	<b>30</b> PS NO SCHOOL PS Parents & Teachers' Meeting	<b>31</b> NO SCHOOL Teachers' Training Course		
8° JHS Get- Together						
HS Parents, Students & Tutors' Meeting						
MAP						



**OBEDIENCE**

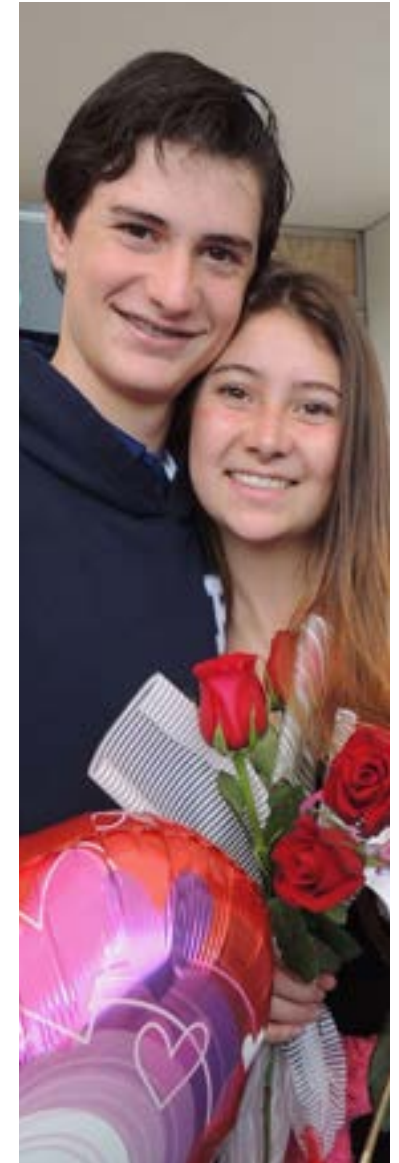


**PINECREST**

# FEBRUARY

“We are not obedient because we are blind, we are obedient because we can see”

MONDAY	TUESDAY	WEDNESDAY	THURSDAY	FRIDAY	SATURDAY	SUNDAY
					<b>1</b>	<b>2</b>
<b>3</b> NO SCHOOL Mexican Constitution	<b>4</b>	<b>5</b>	<b>6</b>	<b>7</b> First Friday Mass	<b>8</b>	<b>9</b>
<div style="border: 1px solid black; padding: 2px; text-align: center;">Premio Semper Altius 2020 (Villahermosa, Tabasco)</div> <div style="background-color: #c00000; color: white; padding: 2px; text-align: center;">12° HS Get-Together</div> <div style="border: 1px solid black; padding: 2px; text-align: center;">JHS &amp; HS 3rd Evaluation Period of "Lectores en Red y Plan de lectura"</div>						
<b>10</b>	<b>11</b> 3° LS GIRLS Group Mass	<b>12</b> First Communion Parents & Godparents' meeting 7:00 p.m.	<b>13</b> Six Flags	<b>14</b> Valentine's Day Kermesse	<b>15</b>	<b>16</b>
Pinecrest High School Week						
<b>17</b>	<b>18</b> Parents' Magna Conference 8:00 a.m.	<b>19</b> 10° HS Generation Mass	<b>20</b>	<b>21</b>	<b>22</b>	<b>23</b>
HS 1st Evaluation Period						
<b>24</b>	<b>25</b> 4° LS GIRLS Group Mass K3 Getting to Know 1st Grade	<b>26</b> Ash Wednesday / Lent Retreat Escuela Promesa Couple's Lent Retreat (Alisos)	<b>27</b>	<b>28</b> Alliance's Presentation	<b>29</b> 4° to 6° LS Intercollegiate Spelling Bee	
HS 1st Evaluation Period						
1° & 2° Dad & Boys Get-Together						



**OBEDIENCE**



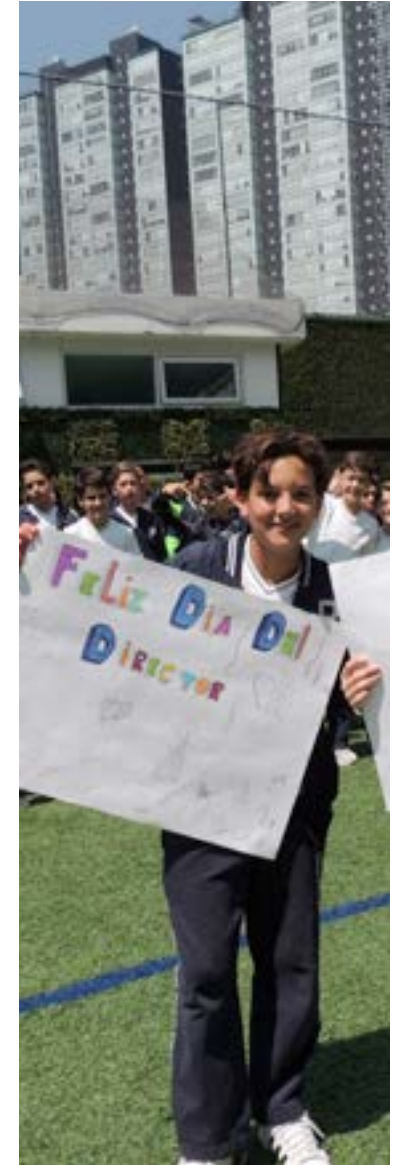


**PINECREST**

# MARCH

“Gratitude brings us happiness”

MONDAY	TUESDAY	WEDNESDAY	THURSDAY	FRIDAY	SATURDAY	SUNDAY
<b>2</b>	<b>3</b>	<b>4</b> JHS & HS Science and Technology Fair	<b>5</b> Mother's Lent Retreat (Alisos)	<b>6</b> First Friday Mass	<b>7</b> 1 <sup>o</sup> to 3 <sup>o</sup> LS Intercollegiate Spelling Bee	<b>1</b>
Vocational Week						<b>8</b>
<b>9</b>	<b>10</b> "3 <sup>o</sup> LS BOYS Group Mass "	<b>11</b> I. Camarena L.C. Conference	<b>12</b>	<b>13</b> NO SCHOOL Teachers' Training Course (Lent Retreat) Anniversary of Pope Francis' Election Day	<b>14</b>	<b>15</b>
LS & JHS 2nd Evaluation Period						
<b>16</b> NO SCHOOL Benito Juarez's Birthday	<b>17</b> "6 <sup>o</sup> LS BOYS Group Mass "	<b>18</b>	<b>19</b>	<b>20</b> PS Grandparents' Day	<b>21</b>	<b>22</b>
	LS & JHS 2nd Evaluation Period					
<b>23</b>	<b>24</b> "6 <sup>o</sup> LS GIRLS Group Mass "	<b>25</b> 9 <sup>o</sup> JHS Community Service Escuela Promesa	<b>26</b> LS, JHS & HS Via Crucis	<b>27</b>	<b>28</b>	<b>29</b>
MAP						
JHS & HS 4th Evaluation Period of "Lectores en Red y Plan de lectura"						
<b>30</b> JHS & HS Alliances' Kick Off	<b>31</b> JHS & HS Alliances LS & JHS Report Cards					



**GRATITUDE**



**PINECREST**

# APRIL

“Gratitude brings us happiness”

MONDAY	TUESDAY	WEDNESDAY	THURSDAY	FRIDAY	SATURDAY	SUNDAY
		<b>1</b> "Jornada de Misericordia" JHS & HS Alliances	<b>2</b> JHS & HS Alliances' Talent Show	<b>3</b> First Friday Mass JHS & HS Alliances' Awards Early Dismissal	<b>4</b>	<b>5</b>
					Mega Misions	
<b>6</b>	<b>7</b>	<b>8</b>	<b>9</b>	<b>10</b>	<b>11</b>	<b>12</b>
Holy Week						
Mega Misions						
<b>13</b>	<b>14</b>	<b>15</b>	<b>16</b>	<b>17</b>	<b>18</b>	<b>19</b>
Easter Week						
<b>20</b>	<b>21</b>	<b>22</b> 7 <sup>o</sup> JHS Community Service	<b>23</b>	<b>24</b>	<b>25</b>	<b>26</b>
		JHS Recovery Exams				
<b>27</b> 11 <sup>o</sup> HS OV Fair	<b>28</b> 4 <sup>o</sup> to 6 <sup>o</sup> LS PINECREST DAY LS & JHS Partial Report	<b>29</b> Escuela Promesa 1 <sup>o</sup> to 3 <sup>o</sup> LS PINECREST DAY 8 <sup>o</sup> JHS Community Service First Communion Parents and Godparents' Meeting 7:30 p.m.	<b>30</b> PS & LS Children's Day JHS & HS Students' Day Early Dismissal			
XXIV PIBA 2020						



**GRATITUDE**



**PINECREST**

# MAY

“If you want to be trusted, just be honest”

MONDAY	TUESDAY	WEDNESDAY	THURSDAY	FRIDAY	SATURDAY	SUNDAY
				<b>1</b> NO SCHOOL Labor Day First Friday	<b>2</b>	<b>3</b>
<b>4</b> NO SCHOOL Teachers' Training Course	<b>5</b> NO SCHOOL Batalla de Puebla	<b>6</b>	<b>7</b> First Communion Students' Retreat	<b>8</b> First Communion Confesions	<b>9</b> First Communion Confesions	<b>10</b>
		12° HS Extraordinary Exams of 1st Semester				
<b>11</b>	<b>12</b>	<b>13</b> PS FAMILY DAY 6.00 p.m.	<b>14</b> PINECREST'S FAMILY DAY Mass 8:00 a.m. Teachers' Day Lunch	<b>15</b> NO SCHOOL Teachers' Day	<b>16</b>	<b>17</b>
		JHS Lectores en Red				
		HS 2nd Evaluation Period				
<b>18</b>	<b>19</b>	<b>20</b> 5° LS GIRLS Community Service	<b>21</b>	<b>22</b>	<b>23</b>	<b>24</b>
		BRISA				
		HS 2nd Evaluation Period				
<b>25</b>	<b>26</b> 6° LS Visit to Teletón	<b>27</b> Escuela Promesa 5° LS BOYS Community Service	<b>28</b>	<b>29</b> LS, JHS & HS Crowning of the Virgin 12° HS Farewell	<b>30</b>	
		PS Academies Open Classes				
		BRISA				
		HS Plan de lectura				
		11° HS O.V. Practices				



**HONESTY**



**PINECREST**

# JUNE

“If you want to be trusted, just be honest”

MONDAY	TUESDAY	WEDNESDAY	THURSDAY	FRIDAY	SATURDAY	SUNDAY
<b>1</b>	<b>2</b>	<b>3</b> "HS List of Exempt Students "	<b>4</b>	<b>5</b> First Friday NO SCHOOL Teachers' Training Course	<b>6</b>	<b>7</b>
LS & JHS 3rd Evaluation Period						
10 <sup>o</sup> & 11 <sup>o</sup> HS Extraordinary Exams						
<b>8</b>	<b>9</b>	<b>10</b>	<b>11</b> Corpus Chirsti Solemnity	<b>12</b> PS PINECREST DAY	<b>13</b>	<b>14</b>
"HS Semestral Evaluation						
LS & JHS 3rd Evaluation Period						
PS Open Classes						
JHS Lectores en Red						
<b>15</b>	<b>16</b> 6 <sup>o</sup> LS Graduation Mass 9:00 a.m.	<b>17</b> 9 <sup>o</sup> JHS Graduation Mass 9:00 a.m. JHS School Year Closure	<b>18</b> 12 <sup>o</sup> HS Graduation Mass 9:00 a.m. HS School Year Closure Last Day of Academies	<b>19</b>	<b>20</b>	<b>21</b>
PS Open Classes						
"HS Semestral Evaluation		HS Extraordinary Exams				
<b>22</b>	<b>23</b>	<b>24</b> PS Last Day of Academies Escuela Promesa Paper Campaign	<b>25</b> K3 Graduation Mass 10:00 a.m.	<b>26</b>	<b>27</b>	<b>28</b>
					ISTE 2020	
<b>29</b>	<b>30</b>					
ISTE 2020						



**HONESTY**

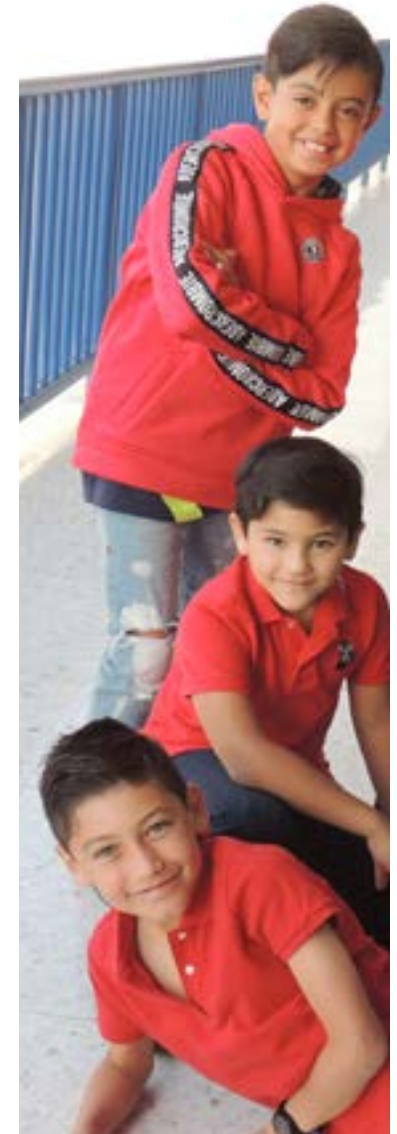


**PINECREST**

# JULY

“If you want to be trusted, just be honest”

MONDAY	TUESDAY	WEDNESDAY	THURSDAY	FRIDAY	SATURDAY	SUNDAY
		<b>1</b>	<b>2</b> PS Last Day of School	<b>3</b> First Friday Mass PS Official SEP Documents	<b>4</b>	<b>5</b>
School Year Closures						
<b>6</b> Official SEP Documents Last Day of School	<b>7</b>	<b>8</b>	<b>9</b>	<b>10</b>	<b>11</b>	<b>12</b>
<b>13</b>	<b>14</b>	<b>15</b>	<b>16</b>	<b>17</b>	<b>18</b>	<b>19</b>
<b>20</b>	<b>21</b>	<b>22</b>	<b>23</b>	<b>24</b>	<b>25</b>	<b>26</b>
<b>27</b>	<b>28</b>	<b>29</b>	<b>30</b>	<b>31</b>		



**HONESTY**