

# September

<i>Sun</i>	<i>Mon</i>	<i>Tue</i>	<i>Wed</i>	<i>Thu</i>	<i>Fri</i>	<i>Sat</i>
<b>WELCOME BACK!</b> <b>PLEASE VISIT OUR DISTRICT WEBSITE AT:</b> <b>WWW.HOWELL.K12.NJ.US</b>						
1	<b>LABOR DAY SCHOOLS CLOSED</b>	<b>Staff Only</b> First Day for Staff	<b>Staff Only</b> Bd. of Ed. Meeting Middle School North	5 First Day for Students	6	7
8	9	10 Newbury Back To School Night	11 Aldrich Back To School Night	12 Middle School South Back To School Night	13	14
15	16 Middle School North Back To School Night	17 Ardena Back To School Night	18 Griebing Back To School Night	19 SEPAC Back To School Night	20	21
22	23 Greenville Back To School Night	24 Ramtown Back To School Night	25 Land O'Pines Back To School Night	26 Adelphia Back To School Night	27 <b>Staff Inservice Day                      SHORTENED DAY                      SESSION</b>	28
29	<b>ROSH HASHANAH SCHOOLS CLOSED</b>					

2019

# October

Sun	Mon	Tue	Wed	Thu	Fri	Sat
<b>"MY DRIVER - MY SAFETY HERO!"</b> <b>NATIONAL SCHOOL BUS SAFETY WEEK</b> <b>OCTOBER 21 - 25, 2019</b>						
		1	2	3	4	5
		<b>ROSH HASHANAH</b> <b>SCHOOLS</b> <b>CLOSED</b>	Bd. of Ed. Meeting Middle School North			
6	7	8	9	10	11	12
<b>WEEK OF RESPECT</b>						
	Taunton Back To School Night		<b>YOM KIPPUR</b> <b>SCHOOLS</b> <b>CLOSED</b>	Memorial Back To School Night		
13	14	15	16	17	18	19
	<b>Staff Inservice Day</b> <b>SCHOOLS</b> <b>CLOSED</b>		Bd. of Ed. Meeting Middle School North			
20	21	22	23	24	25	26
<b>RED RIBBON WEEK</b>						
27	28	29	30	31		
<b>RED RIBBON WEEK</b>						
				<b>HALLOWEEN</b>		

2019

# November

<i>Sun</i>	<i>Mon</i>	<i>Tue</i>	<i>Wed</i>	<i>Thu</i>	<i>Fri</i>	<i>Sat</i>
<p><b>LOOK FOR AMERICAN EDUCATION WEEK EVENTS IN THE SCHOOLS DURING THE WEEK OF NOVEMBER 18-22 . . . "GREAT PUBLIC SCHOOLS: A BASIC RIGHT AND OUR RESPONSIBILITY"</b></p>						
					1	2
3	4	5	6	7	8	9
		ELECTION DAY		NJEA CONVENTION SCHOOLS CLOSED		
10	11	12	13	14	15	16
	VETERANS DAY K-2 Evening Conferences	PARENT TEACHER CONFERENCES SHORTENED DAY SESSIONS				
17	18	19	20	21	22	23
			Bd. of Ed. Meeting Middle School North			
24	25	26	27	28	29	30
			SHORTENED DAY SESSION	THANKSGIVING RECESS SCHOOLS CLOSED		
				THANKSGIVING		

2019

# December

<i>Sun</i>	<i>Mon</i>	<i>Tue</i>	<i>Wed</i>	<i>Thu</i>	<i>Fri</i>	<i>Sat</i>
<b>PARENTS . . .</b> <b>SCHOOL LUNCH INFORMATION CAN BE</b> <b>FOUND ON OUR WEBSITE</b>						
1	2	3	4	5	6	7
8	9	10	11	12	13	14
			Bd. of Ed. Meeting Middle School North			
15	16	17	18	19	20	21
					SHORTENED DAY SESSION	
22	23	24	25	26	27	28
<b>WINTER RECESS - SCHOOLS CLOSED</b>						
29	30	31				

2019

# January

<i>Sun</i>	<i>Mon</i>	<i>Tue</i>	<i>Wed</i>	<i>Thu</i>	<i>Fri</i>	<i>Sat</i>
<p><b>CHECK FOR WEATHER DELAYS OR CLOSINGS:</b>  <b>WWW.HOWELL.K12.NJ.US</b></p>						
			<b>1</b> <b>WINTER RECESS</b> <b>SCHOOLS CLOSED</b>	<b>2</b>  SCHOOLS REOPEN	<b>3</b>	<b>4</b>
<b>5</b>	<b>6</b>	<b>7</b>  Bd. of Ed. Meeting Middle School North	<b>8</b>	<b>9</b>  Staff Inservice Day SHORTENED DAY SESSION	<b>10</b>	<b>11</b>
<b>12</b>	<b>13</b>	<b>14</b>	<b>15</b>	<b>16</b>	<b>17</b>	<b>18</b>
<b>19</b>	<b>20</b>  <b>MARTIN LUTHER</b> <b>KING, JR. DAY</b> <b>SCHOOLS CLOSED</b>	<b>21</b>	<b>22</b>	<b>23</b>	<b>24</b>	<b>25</b>
<b>26</b>	<b>27</b>	<b>28</b>	<b>29</b>	<b>30</b>	<b>31</b>	

**2020**

# February

<i>Sun</i>	<i>Mon</i>	<i>Tue</i>	<i>Wed</i>	<i>Thu</i>	<i>Fri</i>	<i>Sat</i>
<b>FOLLOW HOWELL TOWNSHIP SCHOOLS ON TWITTER!</b> <b>@HowellTwpK8</b>						
						1
2	3 Staff Inservice Day SCHOOLS CLOSED	4	5	6	7	8
9	10	11	12	13	14	15
16	17 PRESIDENTS' DAY SCHOOLS CLOSED	18	19	20	21	22
23	24	25	26	27	28	29

2020

# March

Sun

Mon

Tue

Wed

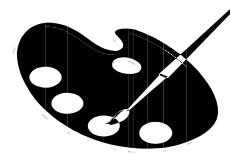
Thu

Fri

Sat



**MARCH IS MUSIC IN OUR SCHOOLS  
MONTH & YOUTH ART MONTH**



1	2	3	4	5	6	7
		3-5 Evening Conferences	PARENT TEACHER CONFERENCES SHORTENED DAY SESSIONS			
8	9	10	11	12	13	14
15	16	17	18	19	20	21
			Staff Inservice Day SHORTENED DAY SESSION			
22	23	24	25	26	27	28
29	30	31				

2020

# April

Sun

Mon

Tue

Wed

Thu

Fri

Sat

**FOLLOW HOWELL TOWNSHIP SCHOOLS ON FACEBOOK!**  
*Select the Facebook logo on our website's home page*



1

2

3

4

5

6

7

8

9

10

11

**SPRING RECESS  
SCHOOLS  
CLOSED**

12

13

14

15

16

17

18

**SPRING RECESS – SCHOOLS CLOSED**

19

**SPRING RECESS  
SCHOOLS  
CLOSED**

20

**SCHOOLS  
REOPEN**

21

22

**ADMINISTRATIVE  
PROFESSIONALS' DAY**

23

24

25

26

27

28

29

30

2020



# May

<i>Sun</i>	<i>Mon</i>	<i>Tue</i>	<i>Wed</i>	<i>Thu</i>	<i>Fri</i>	<i>Sat</i>
<b>MAY IS NATIONAL BIKE MONTH</b>					1	2
3	4	5	6	7	8	9
		Staff Inservice Day SHORTENED DAY				
		NATIONAL TEACHER DAY				
10	11	12	13	14	15	16
MOTHER'S DAY			NATIONAL SCHOOL NURSE DAY			
17	18	19	20	21	22	23
24	25	26	27	28	29	30
	MEMORIAL DAY SCHOOLS CLOSED					
31						

2020

# June

Sun

Mon

Tue

Wed

Thu

Fri

Sat

**HAVE A HEALTHY  
AND HAPPY SUMMER!**



1

2

3

4

5

6

7

8

9

10

11

12

13

14

15

16

17

18

19

20

**SHORTENED DAY  
SESSION**

21

22

23

24

25

26

27

**SHORTENED DAY SESSIONS**

**Staff Inservice Day  
SCHOOLS  
CLOSED**

**FATHER'S DAY**

Tentative Graduation

Tentative  
Last Day of School


28

29

30

**2020**

# July

<i>Sun</i>	<i>Mon</i>	<i>Tue</i>	<i>Wed</i>	<i>Thu</i>	<i>Fri</i>	<i>Sat</i>
			1	2	3	4  INDEPENDENCE DAY
5	6	7	8	9	10	11
12	13	14	15	16	17	18
19	20	21	22	23	24	25
26	27	28	29	30	31	

2020

# August

<i>Sun</i>	<i>Mon</i>	<i>Tue</i>	<i>Wed</i>	<i>Thu</i>	<i>Fri</i>	<i>Sat</i>
						1
2	3	4	5	6	7	8
9	10	11	12	13	14	15
16	17	18	19	20	21	22
23	24	25	26	27	28	29
30	31		<p><b>TIME FOR SCHOOL CLOTHES, LUNCH BOXES, ALL THAT GEAR - THE TIME TO RETURN IS GETTING NEAR!!!</b></p>			

2020