

LEA Name : Indiana Area SD  
Address : 501 E Pike  
Indiana, PA 15701

County : Indiana  
AUN Number : 128323703  
LEA Type : SD

## Annual Financial Report Accuracy Certification Statement

For Fiscal Year Ending  
6/30/2016

Pennsylvania Department of Education  
&  
Office of Comptroller Operations  
PDE-2056: Intermediate Unit  
PDE-2057: School District, AVTS/CTC, Charter School,  
and Special Program Jointure

**CERTIFICATION:** By signing this page I agree that the electronic data submitted is a complete and accurate statement of the financial operations and status of the local education agency for the fiscal year. It has been prepared in accordance with generally accepted accounting principles and established Commonwealth of PA reporting guidelines.

Chief School Administrator Signature



Date

10/31/16

Board Secretary Signature



Date

10/31/16

Jared Cronauer

(724)463-8713

Ext :109

Contact Person

Contact Person Telephone Number

jcronauer@iasd.cc

Contact Person E-mail Address

Contact Person Fax Number

**Audit Certification**  
**Annual Financial Report:**  
For Fiscal Year Ending **6/30/2016**  
**(Pursuant to PA School Code Section 218(b))**

LEA Name : Indiana Area SD  
AUN Number : 128323703  
County : Indiana

<b>Audit Certification Due:</b> 12/31/2016
---

This certification is applicable to:

- Orig. Annual Financial Report submitted to Comptroller Operations:** \_\_\_\_\_  
Date
- Annual Financial Report revisions submitted on:** \_\_\_\_\_  
Date

**Auditing Firm:**

**Auditor Contact Name:**

**Auditor Phone:**

**Auditor E-mail:**

CERTIFICATION: By signing this page I agree that the financial statements of the school have been properly audited as noted above pursuant to Article XXIV, and in the auditor's professional opinion, the Annual Financial Report (PDE-2057) submitted on the date referenced is materially consistent with the audited financial statements.

**Chief School Administrator**

**Board Secretary**

\_\_\_\_\_  
Signature

\_\_\_\_\_  
Date

\_\_\_\_\_  
Signature

\_\_\_\_\_  
Date

Jared Cronauer

\_\_\_\_\_  
Contact Person

jcronauer@iasd.cc

\_\_\_\_\_  
Contact Person E-mail Address

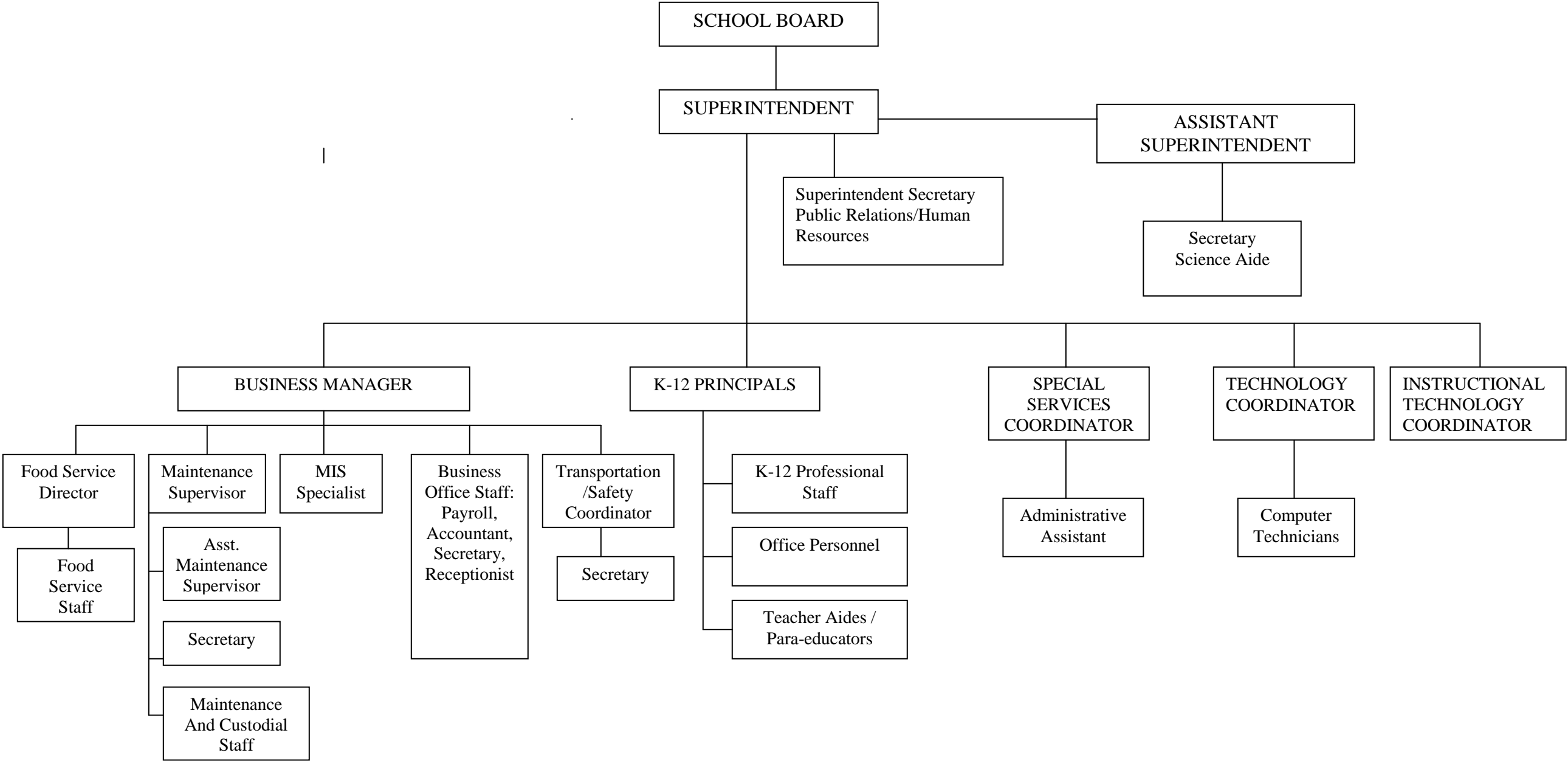
(724)463-8713      Ext :109

\_\_\_\_\_  
Contact Person Telephone Number

(724)463-0868

\_\_\_\_\_  
Contact Person Fax Number

# INDIANA AREA SCHOOL DISTRICT ORGANIZATIONAL CHART



<u>Val Number</u>	<u>Description</u>	<u>Justification</u>
30440	Revenue Detail: AFR amount must equal or exceed PDE FAI System amount. 7240, AFR Rev Detail: 560.00 7240, PDE FAI System: \$5,985.00	\$5985 was the 6/30/15 receivable; \$560 is 6/30/16 receivable
30680	Revenue Detail: Current Tax Revenue amount cannot exceed 30% variance from prior year amount. Correct the data or enter a justification. 6153, Current AFR Rev Detail: \$414,894.37 6153, Prior AFR Rev Detail: \$268,803.32	Indiana County was reassessed.
50076	SOIN: Reductions to Governmental Fund Authority Building Obligations have been reported however, no expenditures have been reported in Functions 5110 or 5120, Object 920 for ABO principal payments. Correct or provide a justification. SOIN, ABO Reductions: \$122,187.00 Expenditure Detail, Function 5110 and 5120, Object 920: \$0.00	We are a member of a CTC; the debt is coded to 1390-564.
50450	SESS - 2350 Legal and Accounting Services: SESS Schedule amounts for Special Education vary from prior year by 40% or more. Correct the data or enter a justification. SESS Schedule 2350: \$8,901.00 Prior Year SESS Schedule 2350: \$2,574.50	Increase in conversations with solicitor regarding special education students.

Amounts Expressed in Whole Dollars	<u>General Fund</u> <u>(10)</u>	<u>Public Purpose Trust</u> <u>(27)</u>	<u>Other Compt Approved</u> <u>(28)</u>	<u>Athletic / Activity</u> <u>(29)</u>	<u>Capital Reserve (690.</u> <u>1850)</u> <u>(31)</u>
<b>Assets And Deferred Outflows Of Resources</b>					
<b>Assets</b>					
0100 Cash and Cash Equivalents	7,772,175				
0110 Investments					
0120 Taxes Receivable	2,811,022				
0130 Due From Other Funds	101,629				
0141 Due From Other Governments	369,800				
0142 State Revenue Receivable	1,869,167				
0143 Federal Revenue Receivable	78,880				
0145 Other Intergovernmental Revenue Receivable					
0146 Due from Primary Government					
0147 Due from Component Unit					
0150 Other Receivables	350,337				
0170 Inventories					
0180 Prepaid Expenses (Expenditures)					
0190 Other Current Assets					
<b>Total Assets</b>	<b>\$13,353,010</b>				
0910 Deferred Outflows of Resources					
<b>Total Assets And Deferred Outflows Of Resources</b>	<b>\$13,353,010</b>				

Amounts Expressed in Whole Dollars

	<u>Capital Reserve (1431)</u> <u>(32)</u>	<u>Other Capital Projects</u> <u>Fund</u> <u>(39)</u>	<u>Debt Service</u> <u>(40)</u>	<u>Permanent</u> <u>(90)</u>	<u>Total Governmental</u> <u>Funds</u>
<b>Assets And Deferred Outflows Of Resources</b>					
<b>Assets</b>					
0100 Cash and Cash Equivalents	1,628,164	1,295,922			10,696,261
0110 Investments					
0120 Taxes Receivable					2,811,022
0130 Due From Other Funds	925				102,554
0141 Due From Other Governments					369,800
0142 State Revenue Receivable					1,869,167
0143 Federal Revenue Receivable					78,880
0145 Other Intergovernmental Revenue Receivable					
0146 Due from Primary Government					
0147 Due from Component Unit					
0150 Other Receivables					350,337
0170 Inventories					
0180 Prepaid Expenses (Expenditures)					
0190 Other Current Assets					
<b>Total Assets</b>	<b>\$1,629,089</b>	<b>\$1,295,922</b>			<b>\$16,278,021</b>
0910 Deferred Outflows of Resources					
<b>Total Assets And Deferred Outflows Of Resources</b>	<b>\$1,629,089</b>	<b>\$1,295,922</b>			<b>\$16,278,021</b>

Amounts Expressed in Whole Dollars

<u>General Fund</u>	<u>Public Purpose Trust</u>	<u>Other Compt Approved</u>	<u>Athletic / Activity</u>	<u>Capital Reserve (690.</u>
<u>(10)</u>	<u>(27)</u>	<u>(28)</u>	<u>(29)</u>	<u>1850)</u>
				<u>(31)</u>

**Liabilities And Deferred Inflows Of Resources And Fund Balances**

**Liabilities**

0400 Due to Other Funds	
0411 Due to Other Governments	
0412 Due to Primary Government	
0413 Due to Component Unit	
0420 Accounts Payable	532,184
0430 Contracts Payable	
0440 Current Portion of Long-Term Debt	
0450 Short-Term Payables	
0461 Accrued Salaries and Benefits	3,098,912
0462 Payroll Deductions and Withholding	2,085,721
0480 Unearned Revenues	9,425
0490 Other Current Liabilities	

<b>Total Liabilities</b>	<b>\$5,726,242</b>
--------------------------	--------------------

0950 Deferred Inflows of Resources	1,664,876
------------------------------------	-----------

**Fund Balances**

0810 Nonspendable Fund Balance	
0820 Restricted Fund Balance	24,230
0830 Committed Fund Balance	1,000,000
0840 Assigned Fund Balance	34,275
0850 Unassigned Fund Balance	4,903,387

<b>Total Fund Balances</b>	<b>\$5,961,892</b>
----------------------------	--------------------

<b>Total Liabilities, Deferred Inflows Of Resources And Fund Balances</b>	<b>\$13,353,010</b>
---	---------------------

Amounts Expressed in Whole Dollars

	<u>Capital Reserve (1431)</u> <u>(32)</u>	<u>Other Capital Projects</u> <u>Fund</u> <u>(39)</u>	<u>Debt Service</u> <u>(40)</u>	<u>Permanent</u> <u>(90)</u>	<u>Total Governmental</u> <u>Funds</u>
<b>Liabilities And Deferred Inflows Of Resources And Fund Balances</b>					
<b>Liabilities</b>					
0400 Due to Other Funds					
0411 Due to Other Governments					
0412 Due to Primary Government					
0413 Due to Component Unit					
0420 Accounts Payable		27,868			560,052
0430 Contracts Payable					
0440 Current Portion of Long-Term Debt					
0450 Short-Term Payables					
0461 Accrued Salaries and Benefits					3,098,912
0462 Payroll Deductions and Withholding					2,085,721
0480 Unearned Revenues					9,425
0490 Other Current Liabilities					
<b>Total Liabilities</b>		<b>\$27,868</b>			<b>\$5,754,110</b>
0950 Deferred Inflows of Resources					1,664,876
<b>Fund Balances</b>					
0810 Nonspendable Fund Balance					
0820 Restricted Fund Balance	1,629,089	1,268,054			2,921,373
0830 Committed Fund Balance					1,000,000
0840 Assigned Fund Balance					34,275
0850 Unassigned Fund Balance					4,903,387
<b>Total Fund Balances</b>	<b>\$1,629,089</b>	<b>\$1,268,054</b>			<b>\$8,859,035</b>
<b>Total Liabilities, Deferred Inflows Of Resources And Fund Balances</b>	<b>\$1,629,089</b>	<b>\$1,295,922</b>			<b>\$16,278,021</b>



Amounts Expressed in Whole Dollars	<u>General Fund</u> <u>(10)</u>	<u>Public Purpose Trust</u> <u>(27)</u>	<u>Other Compt Approved</u> <u>(28)</u>	<u>Athletic / Activity</u> <u>(29)</u>	<u>Capital Reserve (690.</u> <u>1850)</u> <u>(31)</u>
<b>Revenues</b>					
6000 Revenue from Local Sources	33,931,090				
7000 Revenue from State Sources	17,338,626				
8000 Revenue from Federal Sources	527,347				
<b>Total Revenues</b>	<b>\$51,797,063</b>				
<b>Expenditures</b>					
1000 Instruction	33,643,845				
2000 Support Services	13,096,498				
3000 Operation of Non-Instructional Services	1,063,099				
4000 Facilities Acquisition, Construction and Improvement Services					
5110 Debt Service					
5130 Refund of Prior Year Revenues / Receipts	6,312				
5140 Short-Term Borrowing – Interest and Costs					
<b>Total Expenditures</b>	<b>\$47,809,754</b>				
<b>Excess (Deficiency) Of Revenues Over Expenditures</b>	<b>\$3,987,309</b>				
<b>Other Financing Sources (Uses)</b>					
9110 Face Value of Bonds Issued					
9120 Proceeds from Refunding of Bonds					
9130 Bond Premiums					
9200 Proceeds from Extended-Term Financing					
9300 Interfund Transfers - IN					
9400 Sale of or Compensation for Loss of Fixed Assets	27,451				
9710 Transfers from Component Units					
9720 Transfers from Primary Governments					
9910 Other Financing Sources Not Listed in the 9000 Series					
9990 Insurance Recoveries					
5120 Debt Service – Refunded Bonds					
5150 Bond Discounts					
5200 Interfund Transfers – Out	3,563,151				
5300 Transfers Out to Component Units/Primary Governments					
<b>Total Other Financing Sources (Uses)</b>	<b>(\$3,535,700)</b>				

Amounts Expressed in Whole Dollars	<u>Capital Reserve (1431)</u> <u>(32)</u>	<u>Other Capital Projects</u> <u>Fund</u> <u>(39)</u>	<u>Debt Service</u> <u>(40)</u>	<u>Permanent</u> <u>(90)</u>	<u>Total Governmental</u> <u>Funds</u>
<b>Revenues</b>					
6000 Revenue from Local Sources	4,370	1,660	7,702		33,944,822
7000 Revenue from State Sources					17,338,626
8000 Revenue from Federal Sources					527,347
<b>Total Revenues</b>	<b>\$4,370</b>	<b>\$1,660</b>	<b>\$7,702</b>		<b>\$51,810,795</b>
<b>Expenditures</b>					
1000 Instruction					33,643,845
2000 Support Services	240,212		89,462		13,426,172
3000 Operation of Non-Instructional Services					1,063,099
4000 Facilities Acquisition, Construction and Improvement Services	16,354	2,884,649			2,901,003
5110 Debt Service			3,322,753		3,322,753
5130 Refund of Prior Year Revenues / Receipts					6,312
5140 Short-Term Borrowing – Interest and Costs					
<b>Total Expenditures</b>	<b>\$256,566</b>	<b>\$2,884,649</b>	<b>\$3,412,215</b>		<b>\$54,363,184</b>
<b>Excess (Deficiency) Of Revenues Over Expenditures</b>	<b>(\$252,196)</b>	<b>(\$2,882,989)</b>	<b>(\$3,404,513)</b>		<b>(\$2,552,389)</b>
<b>Other Financing Sources (Uses)</b>					
9110 Face Value of Bonds Issued			3,000,000		3,000,000
9120 Proceeds from Refunding of Bonds			5,249,000		5,249,000
9130 Bond Premiums					
9200 Proceeds from Extended-Term Financing					
9300 Interfund Transfers - IN	239,475	2,978,896	3,322,753		6,541,124
9400 Sale of or Compensation for Loss of Fixed Assets					27,451
9710 Transfers from Component Units					
9720 Transfers from Primary Governments					
9910 Other Financing Sources Not Listed in the 9000 Series					
9990 Insurance Recoveries					
5120 Debt Service – Refunded Bonds			5,188,344		5,188,344
5150 Bond Discounts					
5200 Interfund Transfers – Out			2,978,896		6,542,047
5300 Transfers Out to Component Units/Primary Governments					
<b>Total Other Financing Sources (Uses)</b>	<b>\$239,475</b>	<b>\$2,978,896</b>	<b>\$3,404,513</b>		<b>\$3,087,184</b>

Amounts Expressed in Whole Dollars

<u>General Fund</u>	<u>Public Purpose Trust</u>	<u>Other Compt Approved</u>	<u>Athletic / Activity</u>	<u>Capital Reserve</u>
(10)	(27)	(28)	(29)	(690,185)
				(31)

**Special And Extraordinary Items**

- 9920 Special Items – Gains
- 9930 Extraordinary Items – Gains
- 5520 Special Items – Losses
- 5530 Extraordinary Items – Losses

<b>Net Change In Fund Balances</b>	<b>\$451,609</b>
------------------------------------	------------------

**Fund Balance**

0001 Fund Balance - Beginning of Fiscal Year	5,510,283
--	-----------

<b>Fund Balance - End Of Year</b>	<b>\$5,961,892</b>
-----------------------------------	--------------------

Amounts Expressed in Whole Dollars	<u>Capital Reserve (1431)</u> <u>(32)</u>	<u>Other Capital Projects</u> <u>Fund</u> <u>(39)</u>	<u>Debt Service</u> <u>(40)</u>	<u>Permanent</u> <u>(90)</u>	<u>Total Governmental</u> <u>Funds</u>
<b>Special And Extraordinary Items</b>					
9920 Special Items – Gains					
9930 Extraordinary Items – Gains					
5520 Special Items – Losses					
5530 Extraordinary Items – Losses					
<b>Net Change In Fund Balances</b>	<b>(\$12,721)</b>	<b>\$95,907</b>			<b>\$534,795</b>
<b>Fund Balance</b>					
0001 Fund Balance - Beginning of Fiscal Year	1,641,810	1,172,147			8,324,240
<b>Fund Balance - End Of Year</b>	<b>\$1,629,089</b>	<b>\$1,268,054</b>			<b>\$8,859,035</b>

Amounts Expressed in Whole Dollars	<u>Food Service</u> <u>(51)</u>	<u>Child Care</u> <u>Operations</u> <u>(52)</u>	<u>Other Enterprise</u> <u>(58)</u>	<u>TOTAL</u>	<u>Internal Service</u> <u>(60)</u>
<b>Assets And Deferred Outflows Of Resources</b>					
<b>Current Assets</b>					
0100 Cash and Cash Equivalents	6,942		24,306	31,248	
0110 Investments					
0130 Due From Other Funds			385	385	
0141 Due From Other Governments					
0142 State Revenue Receivable					
0143 Federal Revenue Receivable					
0146 Due from Primary Government					
0147 Due from Component Unit					
0150 Other Receivables	973			973	
0170 Inventories	5,411			5,411	
0180 Prepaid Expenses (Expenditures)					
0190 Other Current Assets					
<b>Total Current Assets</b>	<b>\$13,326</b>		<b>\$24,691</b>	<b>\$38,017</b>	
<b>Noncurrent Assets</b>					
0211 Land					
0212 Site Improvements (Net)					
0220 Buildings and Building Improvements (Net)					
0230 Machinery, Equipment and Furniture (Net)	87,292			87,292	
0250 Construction in Progress					
0260 Long Term Prepayments					
0290 Other Noncurrent Assets					
<b>Total Noncurrent Assets</b>	<b>\$87,292</b>			<b>\$87,292</b>	
0910 Deferred Outflows of Resources					
<b>Total Assets And Deferred Outflows Of Resources</b>	<b>\$100,618</b>		<b>\$24,691</b>	<b>\$125,309</b>	

Amounts Expressed in Whole Dollars	<u>Food Service</u> <u>(51)</u>	<u>Child Care</u> <u>Operations</u> <u>(52)</u>	<u>Other Enterprise</u> <u>(58)</u>	<u>TOTAL</u>	<u>Internal Service</u> <u>(60)</u>
<b>Liabilities And Deferred Inflows Of Resources And Net Position</b>					
<b>Current Liabilities</b>					
0400 Due to Other Funds	102,940			102,940	
0411 Due to Other Governments					
0413 Due to Component Unit					
0420 Accounts Payable	18,877			18,877	
0430 Contracts Payable					
0440 Current Portion of Long-Term Debt					
0450 Short-Term Payables					
0461 Accrued Salaries and Benefits					
0462 Payroll Deductions and Withholding					
0480 Unearned Revenues	28,260			28,260	
0490 Other Current Liabilities					
<b>Total Current Liabilities</b>	<b>\$150,077</b>			<b>\$150,077</b>	
<b>Noncurrent Liabilities</b>					
0510 Bonds Payable					
0520 Extended-Term Financing Agreements Payable					
0530 Lease-Purchase Obligations					
0540 Accumulated Compensated Absences					
0550 Authority Lease Obligations					
0560 Other Post-Employment Benefits (OPEB)					
0570 Net Pension Liability					
0599 Other Long-Term Liabilities					
<b>Total Noncurrent Liabilities</b>					
<b>Total Liabilities</b>	<b>\$150,077</b>			<b>\$150,077</b>	
0950 Deferred Inflows of Resources					
<b>Net Position</b>					
0791 Invested in Capital Assets, Net of Related Debt	87,292			87,292	
0008 Restricted Net Position (0792 – 0798)					
0799 Unrestricted Net Position	(136,751)		24,691	(112,060)	
<b>Total Net Position</b>	<b>(\$49,459)</b>		<b>\$24,691</b>	<b>(\$24,768)</b>	
<b>Total Liabilities And Deferred Inflows Of Resources And Net Position</b>	<b>\$100,618</b>		<b>\$24,691</b>	<b>\$125,309</b>	

Amounts Expressed in Whole Dollars	<u>Food Service</u> <u>(51)</u>	<u>Child Care Operations</u> <u>(52)</u>	<u>Other Enterprise</u> <u>(58)</u>	<u>TOTAL</u>	<u>Internal Service</u> <u>(60)</u>
<b>Operating Revenues</b>					
6600 Food Service Revenue	511,601			511,601	
0071 Charges for Services			24,790	24,790	
0072 Other Operating Revenue					
<b>Total Operating Revenues</b>	<b>\$511,601</b>		<b>\$24,790</b>	<b>\$536,391</b>	
<b>Operating Expenses</b>					
100 Personnel Services – Salaries	144,604			144,604	
200 Personnel Services – Employee Benefits	145,295			145,295	
300 Purchased Professional and Technical Services					
400 Purchased Property Services					
500 Other Purchased Services	893,434			893,434	
600 Supplies	3,012		103	3,115	
740 Depreciation	12,180			12,180	
810 Dues and Fees	4,397			4,397	
890 Miscellaneous Expenditures					
<b>Total Operating Expenses</b>	<b>\$1,202,922</b>		<b>\$103</b>	<b>\$1,203,025</b>	
<b>Operating Income (Loss)</b>	<b>(\$691,321)</b>		<b>\$24,687</b>	<b>(\$666,634)</b>	
<b>Non Operating Revenues (Expenses)</b>					
6500 Earnings on Investments	18		4	22	
6920 Contributions and Donations from Private Sources					
6930 Gains or Losses on Sale of Fixed Assets					
6991 Refunds of a Prior Year Expenditure					
7000 Revenue from State Sources	59,133			59,133	
8000 Revenue from Federal Sources	637,190			637,190	
820 Claims and Judgments Against the LEA					
830 Interest					
<b>TOTAL Non Operating Revenues (Expenses)</b>	<b>\$696,341</b>		<b>\$4</b>	<b>\$696,345</b>	
<b>Income (Loss) Before Contributions And Transfers</b>	<b>\$5,020</b>		<b>\$24,691</b>	<b>\$29,711</b>	

Amounts Expressed in Whole Dollars	<u>Food Service</u> <u>(51)</u>	<u>Child Care Operations</u> <u>(52)</u>	<u>Other Enterprise</u> <u>(58)</u>	<u>TOTAL</u>	<u>Internal Service</u> <u>(60)</u>
<b>Contributions, Transfers, and Special and Extraordinary Items</b>					
5200 Interfund Transfers – Out					
5300 Transfers Out to Component Units/Primary Governments					
5520 Special Items – Losses					
5530 Extraordinary Items – Losses					
9300 Interfund Transfers - IN	923			923	
9500 Capital Contributions					
9700 Transfers IN From Component Units/Primary Governments					
9920 Special Items – Gains					
9930 Extraordinary Items – Gains					
<b>Change In Net Position</b>	<b>\$5,943</b>		<b>\$24,691</b>	<b>\$30,634</b>	
0002 Net Position - Beginning of Fiscal Year	(55,402)			(55,402)	
0003 Accounting Changes / Residual Equity Transfers					
<b>Net Position - End Of Year</b>	<b>(\$49,459)</b>		<b>\$24,691</b>	<b>(\$24,768)</b>	



Amounts Expressed in Whole Dollars	<u>Food Service</u> <u>(51)</u>	<u>Child Care Operations</u> <u>(52)</u>	<u>Other Enterprise</u> <u>(58)</u>	<u>TOTAL</u>	<u>Internal Service(60)</u>
<b>Cash Flows From Operating Activities</b>					
0011 Cash Receipts From Users	512,705		24,405	537,110	
0012 Cash Receipts From Assessments Made to Other Funds					
0013 Cash Receipts From Earnings on Investments					
0014 Cash Receipts From Other Operating Revenue					
0015 Cash Payments To Employees For Services	144,604			144,604	
0016 Cash Payments For Insurance Claims					
0017 Cash Payments To Suppliers For Goods and Services	1,065,298			1,065,298	
0018 Cash Payments For Other Operating Expenses			103	103	
<b>Net Cash Provided By (Used For) Operating Activities</b>	<b>(\$697,197)</b>		<b>\$24,302</b>	<b>(\$672,895)</b>	
<b>Cash Flows From Non-Capital Financing Activities</b>					
0021 Receipts From Local Sources - 6000					
0022 Receipts From State Sources - 7000	59,133			59,133	
0023 Receipts From Federal Sources -8000	637,190			637,190	
0024 Notes and Loans Received (Repaid)					
0025 Interest Paid on Notes/Loans - 5100-830					
0026 Operating Transfers In (Out)/Residual Equity Trans					
0027 Operating Transfers In (Out) Primary Government / Comp Unit	923			923	
0028 Receipts From Refund of Prior Year Expenditures - 6991					
0029 Special and Extraordinary Gains (losses)					
<b>Net Cash Prov By (Used for) Non-Capital Financing Activities</b>	<b>\$697,246</b>			<b>\$697,246</b>	
<b>Cash Flows From Capital and Related Financing Activities</b>					
0031 Payments For Fac Acq, Const, and Imp - 4000					
0032 Gain / (Loss) on Sale of Fixed Assets - 6930					
0033 Proceeds From Extended Term Financing - 9200					
0034 Principal Paid on Financing Agreements					
0035 Interest Paid on Financing Agreements - 5100-830					
0036 (Inc) Dec in Contributed Capital					
<b>Net Cash Prov By (Used for) Capital and Related Financing Activities</b>					
<b>Cash Flows From Investing Activities</b>					
0041 Earnings on Investments - 6500	18		4	22	
0042 Purchase of Inv Securities / Deposits to Inv Pools					
0043 Receipts From Investment Pool Withdrawals					
0044 Proceeds from Sale and Maturity of Inv Securities					
0045 Loans Received (Paid)					
<b>Net Cash Prov By (Used for) Investing Activities</b>	<b>\$18</b>		<b>\$4</b>	<b>\$22</b>	

	<u>Food Service</u> <u>(51)</u>	<u>Child Care Operations</u> <u>(52)</u>	<u>Other Enterprise</u> <u>(58)</u>	<u>TOTAL</u>	<u>Internal Service</u> <u>(60)</u>
<b>Net Increase (Decrease) in Cash Flows</b>	67		24,306	24,373	
0004 Cash and Cash Equivalents Beginning of Year	6,875			6,875	
<b>Cash and Cash Equivalents at Year End</b>	<b>\$6,942</b>		<b>\$24,306</b>	<b>\$31,248</b>	

**Reconciliation of Operating Income (Loss) To Net Cash Provided by (Used For) Operating Activities**

0005 Operating Income (Loss) per REP	(691,321)		24,687	(666,634)	
<b>Adjustments</b>					
0051 Depreciation and Net Amortization	12,180			12,180	
0052 Provision for Uncollectible Accounts					
0053 Other Adjustments					
<b>Effect of Changes in Assets, Liabilities, Deferred Outflows and Deferred Inflows</b>					
0054 (Inc) Dec In Accounts Receivable (0120-0150)	1,213			1,213	
0055 Advances to Other Funds (0160)					
0056 (Inc) Dec in Inventories (0170)	3,454			3,454	
0057 (Inc) Dec in Prepaid Expenses (0180)					
0058 (Inc) Dec in Other Current or Noncurrent Assets			(385)	(385)	
0064 Deferred Outflows (0910)					
0059 Inc (Dec) in Accounts Payable (0400-0450)	(22,614)			(22,614)	
0060 Inc (Dec) in Accrued Salaries/Benefits (0461)					
0065 Inc (Dec) in Net Pension Liabilities (0570)					
0066 Inc (Dec) in Other Postemp Benefit Oblig (0560)					
0061 Inc (Dec) in Payroll Deductions/Withholding (0462)					
0062 Inc (Dec) in Unearned Revenue (0480)	(109)			(109)	
0063 Inc (Dec) in Other Current or Noncurrent Liabilities					
0067 Deferred Inflows (0950)					
<b>Total Adjustments</b>	<b>(\$5,876)</b>		<b>(\$385)</b>	<b>(\$6,261)</b>	
<b>Cash Provided By (Used for) Total</b>	<b>(\$697,197)</b>		<b>\$24,302</b>	<b>(\$672,895)</b>	

COMBINED STATEMENT OF CASH FLOWS  
SCHEDULE OF NONCASH INVESTING, CAPITAL, AND FINANCING ACTIVITIES

Explanation of Transaction and Balance Sheet Effect	Amount
<b>Total</b>	

LEA : 128323703 Indiana Area SD

Printed 11/18/2016 9:54:27 AM

Amounts Expressed in Whole Dollars

Private Purpose Trust  
(71)

Investment Trust  
(72)

Pension Trust  
(73)

Activity  
(81)

**Assets And Deferred Outflows Of Resources**

**Assets**

0100 Cash and Cash Equivalents				84,675
0110 Investments				10,000
0130 Due From Other Funds				
0147 Due from Component Unit				
0150 Other Receivables				
0170 Inventories				
0180 Prepaid Expenses (Expenditures)				
0190 Other Current Assets				
0220 Buildings and Building Improvements (Net)				
0230 Machinery, Equipment and Furniture (Net)				

**Total Assets** **\$94,675**

0910 Deferred Outflows of Resources

**Total Assets And Deferred Outflows Of Resources** **\$94,675**

LEA : 128323703 Indiana Area SD

Printed 11/18/2016 9:54:27 AM

Amounts Expressed in Whole Dollars

	<u>Other Agency</u> <u>(89)</u>	<u>Discrete Component Units</u> <u>(98)</u>	<u>Discrete Component Units</u> <u>(99)</u>	<u>Total Fiduciary Funds</u>
<b>Assets And Deferred Outflows Of Resources</b>				
<b>Assets</b>				
0100 Cash and Cash Equivalents				84,675
0110 Investments				10,000
0130 Due From Other Funds				
0147 Due from Component Unit				
0150 Other Receivables				
0170 Inventories				
0180 Prepaid Expenses (Expenditures)				
0190 Other Current Assets				
0220 Buildings and Building Improvements (Net)				
0230 Machinery, Equipment and Furniture (Net)				
<b>Total Assets</b>				<b>\$94,675</b>
0910 Deferred Outflows of Resources				
<b>Total Assets And Deferred Outflows Of Resources</b>				<b>\$94,675</b>

LEA : 128323703 Indiana Area SD

Printed 11/18/2016 9:54:27 AM

Amounts Expressed in Whole Dollars	<u>Private Purpose Trust</u> (71)	<u>Investment Trust</u> (72)	<u>Pension Trust</u> (73)	<u>Activity</u> (81)
<b>Liabilities, Deferred Inflows Of Resources And Net Position</b>				
<b>Liabilities</b>				
0400 Due to Other Funds				
0411 Due to Other Governments				
0412 Due to Primary Government				
0413 Due to Component Unit				
0420 Accounts Payable				
0430 Contracts Payable				
0450 Short-Term Payables				
0461 Accrued Salaries and Benefits				
0462 Payroll Deductions and Withholding				
0480 Unearned Revenues				
0490 Other Current Liabilities				94,675
<b>Total Liabilities</b>				<b>\$94,675</b>
0950 Deferred Inflows of Resources				
<b>Net Position</b>				
0791 Invested in Capital Assets, Net of Related Debt				
0009 Restricted Net Position (0792 – 0798)				
0799 Unrestricted Net Position				
<b>Total Net Position</b>				
<b>Total Liabilities, Deferred Inflows Of Resources And Net Position</b>				<b>\$94,675</b>

LEA : 128323703 Indiana Area SD

Printed 11/18/2016 9:54:27 AM

Amounts Expressed in Whole Dollars	<u>Other Agency</u> (89)	<u>Discrete Component Units</u> (98)	<u>Discrete Component Units</u> (99)	<u>Total Fiduciary Funds</u>
<b>Liabilities, Deferred Inflows Of Resources And Net Position</b>				
<b>Liabilities</b>				
0400 Due to Other Funds				
0411 Due to Other Governments				
0412 Due to Primary Government				
0413 Due to Component Unit				
0420 Accounts Payable				
0430 Contracts Payable				
0450 Short-Term Payables				
0461 Accrued Salaries and Benefits				
0462 Payroll Deductions and Withholding				
0480 Unearned Revenues				
0490 Other Current Liabilities				94,675
<b>Total Liabilities</b>				<b>\$94,675</b>
0950 Deferred Inflows of Resources				
<b>Net Position</b>				
0791 Invested in Capital Assets, Net of Related Debt				
0009 Restricted Net Position (0792 – 0798)				
0799 Unrestricted Net Position				
<b>Total Net Position</b>				
<b>Total Liabilities, Deferred Inflows Of Resources And Net Position</b>				<b>\$94,675</b>

	<u>Revenue Reported In Current Year</u>	<u>Current Year Tax Accrual</u>	<u>Prior Year Tax Accrual</u>	<u>Taxes Collected In Current Year</u>
<b><u>Revenue from Local Sources</u></b>				
6111 Current Real Estate Taxes	26,865,072.43			26,865,072.43
6113 Public Utility Realty Taxes	35,366.85			35,366.85
6114 Payments in Lieu of Current Taxes - State / Local	194,643.83			194,643.83
6151 Current Act 511 Earned Income Taxes	3,758,168.27			3,758,168.27
6153 Current Act 511 Real Estate Transfer Taxes	414,894.37			414,894.37
6411 Delinquent Real Estate Taxes	1,211,625.43			1,211,625.43
6451 Delinquent Act 511 Earned Income Taxes	169,999.24			169,999.24
6500 Earnings on Investments	29,614.29			
6700 Revenues from LEA Activities	46,357.88			
6821 State Revenue Received from Other Pennsylvania Public LEAs	320,309.50			
6831 Federal Revenue Received from Other Pennsylvania Public LEAs	2,333.61			
6832 Federal IDEA Revenue Received as Pass Through	396,448.00			
6890 Other Revenue from Intermediary Sources	1,810.00			
6910 Rentals	16,442.00			
6920 Contributions and Donations from Private Sources	30,597.00			
6942 Summer School Tuition	12,157.50			
6944 Receipts from Other LEAs in Pennsylvania - Education	280,927.31			
6949 Other Tuition from Patrons	16,280.00			
6991 Refunds of a Prior Year Expenditure	83,943.14			
6992 Energy Efficiency Revenues and Incentives	23,409.67			
6999 Other Revenues Not Specified Above	20,689.92			
<b>TOTAL Revenue from Local Sources</b>	<b>\$33,931,090.24</b>			<b>\$32,649,770.42</b>



**Revenue Reported  
In Current Year**

**Revenue from State Sources**

7110 Basic Education Funding	8,984,535.94		
7160 Tuition for Orphans Subsidy	37,568.62		
7240 Driver Education - Student	560.00		
7271 Special Education funds for School-Aged Pupils	1,714,738.23		
7311 Pupil Transportation Subsidy	757,809.30		
7312 Nonpublic and Charter School Pupil Transportation Subsidy	43,510.23		
7320 Rental and Sinking Fund Payments / Building Reimbursement Subsidy	372,982.96		
7330 Health Services (Medical, Dental, Nurse, Act 25)	53,088.11		
7340 State Property Tax Reduction Allocation	1,032,676.97		
7505 Ready to Learn Block Grant	353,791.00		
7810 State Share of Social Security and Medicare Taxes	897,133.96		
7820 State Share of Retirement Contributions	3,090,230.43		
<b>TOTAL Revenue from State Sources</b>	<b>\$17,338,625.75</b>		

**Revenue Reported  
In Current Year**

**Revenue from Federal Sources**

8514 NCLB, Title I - Improving the Academic Achievement of the Disadvantaged	293,841.21		
8515 NCLB, Title II - Preparing, Training and Recruiting High Quality Teachers and Principals	167,386.09		
8516 NCLB, Title III - Language Instruction for Limited English Proficient and Immigrant Students	26,589.86		
8810 School-Based Access Medicaid Reimbursement Program (SBAP) Reimbursements (Access)	23,000.00		
8820 Medical Assistance Reimbursement for Administrative Claiming (Quarterly) Program	16,530.14		
<b>TOTAL Revenue from Federal Sources</b>	<b>\$527,347.30</b>		

**Revenue Reported  
In Current Year**

**Other Financing Sources**

9400 Sale of or Compensation for Loss of Fixed Assets	27,450.82	
<b>TOTAL Other Financing Sources</b>	<b>\$27,450.82</b>	
<b>TOTAL FROM ALL SOURCES</b>	<b>\$51,824,514.11</b>	<b>\$32,649,770.42</b>

Revenue from Local Sources	33,931,090.24
Revenue from State Sources	17,338,625.75
Revenue from Federal Sources	527,347.30
Other Financing Sources	27,450.82
<b>TOTAL FROM ALL SOURCES</b>	<b>\$51,824,514.11</b>

**General Fund (10)**

	<u>Total</u>
<b>1000 Instruction</b>	
<b>100 Personnel Services – Salaries</b>	
100 Personnel Services – Salaries	18,281,744.15
<b>Total Personnel Services – Salaries</b>	<b>\$18,281,744.15</b>
<b>200 Personnel Services – Employee Benefits</b>	
210 Group Insurance – Contracted Provider	4,616,403.29
220 Social Security Contributions	1,374,714.94
230 PSERS Retirement Contributions	4,698,232.75
240 Tuition Reimbursement	85,363.50
250 Unemployment Compensation	6,167.56
260 Workers' Compensation	59,592.35
290 Other Current Employee Benefits	116,975.65
<b>Total Personnel Services – Employee Benefits</b>	<b>\$10,957,450.04</b>
<b>300 Purchased Professional and Technical Services</b>	
322 Professional Educational Services – Ius	492,047.83
323 Professional Educational Services – Other Educational Agencies	322.60
329 Professional Educational Services – Other	424,848.81
330 Other Professional Services	78,387.60
<b>Total Purchased Professional and Technical Services</b>	<b>\$995,606.84</b>
<b>400 Purchased Property Services</b>	
420 Utility Services	5,229.61
430 Repairs and Maintenance Services	462.50
440 Rentals	70,846.64
<b>Total Purchased Property Services</b>	<b>\$76,538.75</b>
<b>500 Other Purchased Services</b>	
510 Student Transportation Services	146,039.56
530 Communications	8,642.50
550 Printing and Binding	925.00
561 Tuition To Other School Districts Within the State	167,768.05
562 Tuition To Pennsylvania Charter Schools	816,349.43
563 Tuition To Nonpublic Schools	391,845.53
564 Tuition To Career and Technology Centers	666,622.10
567 Tuition To Approved Private Schools (APS) and PA Chartered Schools for the Deaf and Blind	153,743.04
568 Tuition To Private Residential Rehabilitative Institutions (PRRI) [In-State] and Detention Centers	3,179.26
580 Travel	5,126.67
<b>Total Other Purchased Services</b>	<b>\$2,360,241.14</b>
<b>600 Supplies</b>	
610 General Supplies	272,557.79
620 Energy	1,296.73
630 Food	18,450.95
640 Books and Periodicals	290,132.23
<b>Total Supplies</b>	<b>\$582,437.70</b>
<b>700 Property</b>	
750 Equipment – Original and Additional	336,839.54

**General Fund (10)**

<b>1000 Instruction</b>	<b><u>Total</u></b>
<b>700 <u>Property</u></b>	
760 Equipment – Replacement	30,698.17
<b>Total Property</b>	<b>\$367,537.71</b>
<b>800 <u>Other Objects</u></b>	
810 Dues and Fees	12,905.39
860 Grants To Municipal and Community Service Organizations	9,383.62
<b>Total Other Objects</b>	<b>\$22,289.01</b>
<b>Total 1000 Instruction</b>	<b>\$33,643,845.34</b>

**General Fund (10)**

**1100 Regular Programs – Elementary / Secondary**

	<u>Elementary</u>	<u>Secondary</u>	<u>Federal</u>	<u>Total</u>
<b>100 Personnel Services – Salaries</b>				
100 Personnel Services – Salaries	8,164,575.78	6,815,231.18	310,129.37	15,289,936.33
<b>Total Personnel Services – Salaries</b>	<b>\$8,164,575.78</b>	<b>\$6,815,231.18</b>	<b>\$310,129.37</b>	<b>\$15,289,936.33</b>
<b>200 Personnel Services – Employee Benefits</b>				
210 Group Insurance – Contracted Provider	1,911,343.65	1,744,474.57	78,177.20	3,733,995.42
220 Social Security Contributions	623,303.27	509,259.73	23,711.36	1,156,274.36
230 PSERS Retirement Contributions	2,164,767.71	1,745,095.81	40,068.62	3,949,932.14
240 Tuition Reimbursement	49,238.50	36,125.00		85,363.50
250 Unemployment Compensation	4,627.84	1,539.72		6,167.56
260 Workers' Compensation	24,992.78	18,010.66	1,550.34	44,553.78
290 Other Current Employee Benefits	51,939.88	40,308.12		92,248.00
<b>Total Personnel Services – Employee Benefits</b>	<b>\$4,830,213.63</b>	<b>\$4,094,813.61</b>	<b>\$143,507.52</b>	<b>\$9,068,534.76</b>
<b>300 Purchased Professional and Technical Services</b>				
322 Professional Educational Services – Ius		900.00		900.00
329 Professional Educational Services – Other	216,011.98	185,018.00	3,507.30	404,537.28
330 Other Professional Services	4,629.18	8,600.82		13,230.00
<b>Total Purchased Professional and Technical Services</b>	<b>\$220,641.16</b>	<b>\$194,518.82</b>	<b>\$3,507.30</b>	<b>\$418,667.28</b>
<b>400 Purchased Property Services</b>				
430 Repairs and Maintenance Services	157.46	292.54		450.00
440 Rentals	38,959.61	31,887.03		70,846.64
<b>Total Purchased Property Services</b>	<b>\$39,117.07</b>	<b>\$32,179.57</b>		<b>\$71,296.64</b>
<b>500 Other Purchased Services</b>				
510 Student Transportation Services	46,417.84	17,985.41		64,403.25
530 Communications		8,642.50		8,642.50
550 Printing and Binding		925.00		925.00
562 Tuition To Pennsylvania Charter Schools	266,099.35	308,162.19		574,261.54
580 Travel	1,971.23	150.95		2,122.18
<b>Total Other Purchased Services</b>	<b>\$314,488.42</b>	<b>\$335,866.05</b>		<b>\$650,354.47</b>
<b>600 Supplies</b>				
610 General Supplies	108,767.14	120,925.37	14,408.97	244,101.48
640 Books and Periodicals	102,208.36	174,599.73	2,625.98	279,434.07
<b>Total Supplies</b>	<b>\$210,975.50</b>	<b>\$295,525.10</b>	<b>\$17,034.95</b>	<b>\$523,535.55</b>
<b>700 Property</b>				
750 Equipment – Original and Additional	106,773.12	229,033.42		335,806.54
760 Equipment – Replacement	15,625.68	15,072.49		30,698.17
<b>Total Property</b>	<b>\$122,398.80</b>	<b>\$244,105.91</b>		<b>\$366,504.71</b>
<b>800 Other Objects</b>				
810 Dues and Fees	655.28	11,575.11		12,230.39
<b>Total Other Objects</b>	<b>\$655.28</b>	<b>\$11,575.11</b>		<b>\$12,230.39</b>
<b>Total 1100 Regular Programs – Elementary / Secondary</b>	<b>\$13,903,065.64</b>	<b>\$12,023,815.35</b>	<b>\$474,179.14</b>	<b>\$26,401,060.13</b>

**General Fund (10)**

**1110 Regular Programs**

	<u>Elementary</u>	<u>Secondary</u>	<u>Federal</u>	<u>Total</u>
<b>100 Personnel Services – Salaries</b>				
100 Personnel Services – Salaries	8,164,575.78	6,815,231.18	310,129.37	15,289,936.33
<b>Total Personnel Services – Salaries</b>	<b>\$8,164,575.78</b>	<b>\$6,815,231.18</b>	<b>\$310,129.37</b>	<b>\$15,289,936.33</b>
<b>200 Personnel Services – Employee Benefits</b>				
210 Group Insurance – Contracted Provider	1,911,343.65	1,744,474.57	78,177.20	3,733,995.42
220 Social Security Contributions	623,303.27	509,259.73	23,711.36	1,156,274.36
230 PSERS Retirement Contributions	2,164,767.71	1,745,095.81	40,068.62	3,949,932.14
240 Tuition Reimbursement	49,238.50	36,125.00		85,363.50
250 Unemployment Compensation	4,627.84	1,539.72		6,167.56
260 Workers' Compensation	24,992.78	18,010.66	1,550.34	44,553.78
290 Other Current Employee Benefits	51,939.88	40,308.12		92,248.00
<b>Total Personnel Services – Employee Benefits</b>	<b>\$4,830,213.63</b>	<b>\$4,094,813.61</b>	<b>\$143,507.52</b>	<b>\$9,068,534.76</b>
<b>300 Purchased Professional and Technical Services</b>				
322 Professional Educational Services – Ius		900.00		900.00
329 Professional Educational Services – Other	216,011.98	185,018.00	3,507.30	404,537.28
330 Other Professional Services	4,629.18	8,600.82		13,230.00
<b>Total Purchased Professional and Technical Services</b>	<b>\$220,641.16</b>	<b>\$194,518.82</b>	<b>\$3,507.30</b>	<b>\$418,667.28</b>
<b>400 Purchased Property Services</b>				
430 Repairs and Maintenance Services	157.46	292.54		450.00
440 Rentals	38,959.61	31,887.03		70,846.64
<b>Total Purchased Property Services</b>	<b>\$39,117.07</b>	<b>\$32,179.57</b>		<b>\$71,296.64</b>
<b>500 Other Purchased Services</b>				
510 Student Transportation Services	46,417.84	17,985.41		64,403.25
530 Communications		8,642.50		8,642.50
550 Printing and Binding		925.00		925.00
562 Tuition To Pennsylvania Charter Schools	266,099.35	308,162.19		574,261.54
580 Travel	1,971.23	150.95		2,122.18
<b>Total Other Purchased Services</b>	<b>\$314,488.42</b>	<b>\$335,866.05</b>		<b>\$650,354.47</b>
<b>600 Supplies</b>				
610 General Supplies	108,767.14	120,925.37	14,408.97	244,101.48
640 Books and Periodicals	102,208.36	174,599.73	2,625.98	279,434.07
<b>Total Supplies</b>	<b>\$210,975.50</b>	<b>\$295,525.10</b>	<b>\$17,034.95</b>	<b>\$523,535.55</b>
<b>700 Property</b>				
750 Equipment – Original and Additional	106,773.12	229,033.42		335,806.54
760 Equipment – Replacement	15,625.68	15,072.49		30,698.17
<b>Total Property</b>	<b>\$122,398.80</b>	<b>\$244,105.91</b>		<b>\$366,504.71</b>
<b>800 Other Objects</b>				
810 Dues and Fees	655.28	11,575.11		12,230.39
<b>Total Other Objects</b>	<b>\$655.28</b>	<b>\$11,575.11</b>		<b>\$12,230.39</b>
<b>Total 1110 Regular Programs</b>	<b>\$13,903,065.64</b>	<b>\$12,023,815.35</b>	<b>\$474,179.14</b>	<b>\$26,401,060.13</b>



LEA : 128323703 Indiana Area SD

Printed 11/18/2016 9:54:30 AM

Page - 5 of 30

**General Fund (10)****1200 Special Programs – Elementary / Secondary**

	<u>Elementary</u>	<u>Secondary</u>	<u>Federal</u>	<u>Total</u>
<b>100 Personnel Services – Salaries</b>				
100 Personnel Services – Salaries	1,487,803.07	940,600.22	130,582.00	2,558,985.29
<b>Total Personnel Services – Salaries</b>	<b>\$1,487,803.07</b>	<b>\$940,600.22</b>	<b>\$130,582.00</b>	<b>\$2,558,985.29</b>
<b>200 Personnel Services – Employee Benefits</b>				
210 Group Insurance – Contracted Provider	503,355.45	299,875.00	27,861.92	831,092.37
220 Social Security Contributions	112,868.57	70,542.73	9,893.58	193,304.88
230 PSERS Retirement Contributions	398,217.77	247,891.12	16,871.19	662,980.08
260 Workers' Compensation	7,405.21	4,634.37	789.00	12,828.58
290 Other Current Employee Benefits	11,608.61	8,879.39	1,300.00	21,788.00
<b>Total Personnel Services – Employee Benefits</b>	<b>\$1,033,455.61</b>	<b>\$631,822.61</b>	<b>\$56,715.69</b>	<b>\$1,721,993.91</b>
<b>300 Purchased Professional and Technical Services</b>				
322 Professional Educational Services – lus	61,376.46	376,919.54	52,851.83	491,147.83
329 Professional Educational Services – Other			935.44	935.44
330 Other Professional Services	3,175.60	61,982.00		65,157.60
<b>Total Purchased Professional and Technical Services</b>	<b>\$64,552.06</b>	<b>\$438,901.54</b>	<b>\$53,787.27</b>	<b>\$557,240.87</b>
<b>500 Other Purchased Services</b>				
510 Student Transportation Services	33,290.69	32,069.89		65,360.58
561 Tuition To Other School Districts Within the State	27,608.03	111,010.37		138,618.40
562 Tuition To Pennsylvania Charter Schools	84,514.76	157,573.13		242,087.89
563 Tuition To Nonpublic Schools	78,780.00	233,673.08		312,453.08
567 Tuition To Approved Private Schools (APS) and PA Chartered Schools for the Deaf and Blind	65,599.20	88,143.84		153,743.04
568 Tuition To Private Residential Rehabilitative Institutions (PRRI) [In-State] and Detention Centers		3,179.26		3,179.26
580 Travel			2,348.99	2,348.99
<b>Total Other Purchased Services</b>	<b>\$289,792.68</b>	<b>\$625,649.57</b>	<b>\$2,348.99</b>	<b>\$917,791.24</b>
<b>600 Supplies</b>				
610 General Supplies	10,026.34	6,757.23	6,223.31	23,006.88
630 Food	1,843.15	1,523.95		3,367.10
640 Books and Periodicals	1,562.44	1,587.90		3,150.34
<b>Total Supplies</b>	<b>\$13,431.93</b>	<b>\$9,869.08</b>	<b>\$6,223.31</b>	<b>\$29,524.32</b>
<b>800 Other Objects</b>				
810 Dues and Fees	369.50	305.50		675.00
860 Grants To Municipal and Community Service Organizations		9,383.62		9,383.62
<b>Total Other Objects</b>	<b>\$369.50</b>	<b>\$9,689.12</b>		<b>\$10,058.62</b>
<b>Total 1200 Special Programs – Elementary / Secondary</b>	<b>\$2,889,404.85</b>	<b>\$2,656,532.14</b>	<b>\$249,657.26</b>	<b>\$5,795,594.25</b>

**General Fund (10)**

**1210 Life Skills Support**

	<u>Elementary</u>	<u>Secondary</u>	<u>Federal</u>	<u>Total</u>
<b>100 Personnel Services – Salaries</b>				
100 Personnel Services – Salaries	305,474.86	226,679.86		532,154.72
<b>Total Personnel Services – Salaries</b>	<b>\$305,474.86</b>	<b>\$226,679.86</b>		<b>\$532,154.72</b>
<b>200 Personnel Services – Employee Benefits</b>				
210 Group Insurance – Contracted Provider	126,241.04	92,685.52		218,926.56
220 Social Security Contributions	23,310.73	17,291.38		40,602.11
230 PSERS Retirement Contributions	78,910.07	58,578.79		137,488.86
260 Workers' Compensation	1,527.44	1,133.67		2,661.11
290 Other Current Employee Benefits	454.87	845.13		1,300.00
<b>Total Personnel Services – Employee Benefits</b>	<b>\$230,444.15</b>	<b>\$170,534.49</b>		<b>\$400,978.64</b>
<b>300 Purchased Professional and Technical Services</b>				
322 Professional Educational Services – lus			33,771.16	33,771.16
330 Other Professional Services		32,723.85		32,723.85
<b>Total Purchased Professional and Technical Services</b>		<b>\$32,723.85</b>	<b>\$33,771.16</b>	<b>\$66,495.01</b>
<b>500 Other Purchased Services</b>				
510 Student Transportation Services	17,112.99	14,149.32		31,262.31
<b>Total Other Purchased Services</b>	<b>\$17,112.99</b>	<b>\$14,149.32</b>		<b>\$31,262.31</b>
<b>600 Supplies</b>				
610 General Supplies	2,557.91	2,764.67		5,322.58
640 Books and Periodicals	395.00	322.25		717.25
<b>Total Supplies</b>	<b>\$2,952.91</b>	<b>\$3,086.92</b>		<b>\$6,039.83</b>
<b>Total 1210 Life Skills Support</b>	<b>\$555,984.91</b>	<b>\$447,174.44</b>	<b>\$33,771.16</b>	<b>\$1,036,930.51</b>

**General Fund (10)**

	<u>Elementary</u>	<u>Secondary</u>	<u>Federal</u>	<u>Total</u>
<b>1220 Sensory Support</b>				
<b>100 Personnel Services – Salaries</b>				
100 Personnel Services – Salaries	205,459.00	46,804.77		252,263.77
<b>Total Personnel Services – Salaries</b>	<b>\$205,459.00</b>	<b>\$46,804.77</b>		<b>\$252,263.77</b>
<b>200 Personnel Services – Employee Benefits</b>				
210 Group Insurance – Contracted Provider	54,698.90	22,848.83		77,547.73
220 Social Security Contributions	15,818.87	3,594.76		19,413.63
230 PSERS Retirement Contributions	53,807.22	13,094.75		66,901.97
260 Workers' Compensation	1,041.29	253.44		1,294.73
290 Other Current Employee Benefits	1,300.00			1,300.00
<b>Total Personnel Services – Employee Benefits</b>	<b>\$126,666.28</b>	<b>\$39,791.78</b>		<b>\$166,458.06</b>
<b>300 Purchased Professional and Technical Services</b>				
322 Professional Educational Services – lus	61,376.46	198,973.54	10,025.81	270,375.81
330 Other Professional Services	3,175.60	11,693.15		14,868.75
<b>Total Purchased Professional and Technical Services</b>	<b>\$64,552.06</b>	<b>\$210,666.69</b>	<b>\$10,025.81</b>	<b>\$285,244.56</b>
<b>600 Supplies</b>				
610 General Supplies	6,165.02	3,506.86		9,671.88
640 Books and Periodicals	444.60			444.60
<b>Total Supplies</b>	<b>\$6,609.62</b>	<b>\$3,506.86</b>		<b>\$10,116.48</b>
<b>800 Other Objects</b>				
810 Dues and Fees	369.50	305.50		675.00
<b>Total Other Objects</b>	<b>\$369.50</b>	<b>\$305.50</b>		<b>\$675.00</b>
<b>Total 1220 Sensory Support</b>	<b>\$403,656.46</b>	<b>\$301,075.60</b>	<b>\$10,025.81</b>	<b>\$714,757.87</b>

**General Fund (10)**

**1230 Emotional Support**

	<u>Elementary</u>	<u>Secondary</u>	<u>Federal</u>	<u>Total</u>
<b>100 Personnel Services – Salaries</b>				
100 Personnel Services – Salaries	105,481.93	118,267.82	45,357.00	269,106.75
<b>Total Personnel Services – Salaries</b>	<b>\$105,481.93</b>	<b>\$118,267.82</b>	<b>\$45,357.00</b>	<b>\$269,106.75</b>
<b>200 Personnel Services – Employee Benefits</b>				
210 Group Insurance – Contracted Provider	34,763.76	36,466.88	10,080.44	81,311.08
220 Social Security Contributions	7,920.82	8,916.37	3,469.81	20,307.00
230 PSERS Retirement Contributions	29,320.56	34,395.10	5,860.12	69,575.78
260 Workers' Compensation	479.68	502.94	362.86	1,345.48
290 Other Current Employee Benefits	1,300.00	1,300.00		2,600.00
<b>Total Personnel Services – Employee Benefits</b>	<b>\$73,784.82</b>	<b>\$81,581.29</b>	<b>\$19,773.23</b>	<b>\$175,139.34</b>
<b>300 Purchased Professional and Technical Services</b>				
322 Professional Educational Services – lus		177,946.00	9,054.86	187,000.86
<b>Total Purchased Professional and Technical Services</b>		<b>\$177,946.00</b>	<b>\$9,054.86</b>	<b>\$187,000.86</b>
<b>500 Other Purchased Services</b>				
510 Student Transportation Services	2,783.10	5,170.90		7,954.00
561 Tuition To Other School Districts Within the State	27,608.03	109,766.92		137,374.95
563 Tuition To Nonpublic Schools	78,780.00	190,567.36		269,347.36
567 Tuition To Approved Private Schools (APS) and PA Chartered Schools for the Deaf and Blind	65,599.20	7,200.00		72,799.20
<b>Total Other Purchased Services</b>	<b>\$174,770.33</b>	<b>\$312,705.18</b>		<b>\$487,475.51</b>
<b>600 Supplies</b>				
610 General Supplies	60.62	268.51		329.13
630 Food	1,843.15	1,523.95		3,367.10
<b>Total Supplies</b>	<b>\$1,903.77</b>	<b>\$1,792.46</b>		<b>\$3,696.23</b>
<b>800 Other Objects</b>				
860 Grants To Municipal and Community Service Organizations		9,383.62		9,383.62
<b>Total Other Objects</b>		<b>\$9,383.62</b>		<b>\$9,383.62</b>
<b>Total 1230 Emotional Support</b>	<b>\$355,940.85</b>	<b>\$701,676.37</b>	<b>\$74,185.09</b>	<b>\$1,131,802.31</b>

LEA : 128323703 Indiana Area SD

Printed 11/18/2016 9:54:30 AM

Page - 9 of 30

**General Fund (10)****1240 Academic Support**

	<u>Elementary</u>	<u>Secondary</u>	<u>Federal</u>	<u>Total</u>
<b>100 Personnel Services – Salaries</b>				
100 Personnel Services – Salaries	856,569.68	548,847.77	85,225.00	1,490,642.45
<b>Total Personnel Services – Salaries</b>	<b>\$856,569.68</b>	<b>\$548,847.77</b>	<b>\$85,225.00</b>	<b>\$1,490,642.45</b>
<b>200 Personnel Services – Employee Benefits</b>				
210 Group Insurance – Contracted Provider	287,394.83	147,877.40	17,781.48	453,053.71
220 Social Security Contributions	64,684.57	40,740.22	6,423.77	111,848.56
230 PSERS Retirement Contributions	232,350.99	141,822.48	11,011.07	385,184.54
260 Workers' Compensation	4,282.67	2,744.32	426.14	7,453.13
290 Other Current Employee Benefits	8,553.74	6,734.26	1,300.00	16,588.00
<b>Total Personnel Services – Employee Benefits</b>	<b>\$597,266.80</b>	<b>\$339,918.68</b>	<b>\$36,942.46</b>	<b>\$974,127.94</b>
<b>300 Purchased Professional and Technical Services</b>				
330 Other Professional Services		17,565.00		17,565.00
<b>Total Purchased Professional and Technical Services</b>		<b>\$17,565.00</b>		<b>\$17,565.00</b>
<b>500 Other Purchased Services</b>				
510 Student Transportation Services	13,394.60	12,749.67		26,144.27
561 Tuition To Other School Districts Within the State		1,243.45		1,243.45
562 Tuition To Pennsylvania Charter Schools	84,514.76	157,573.13		242,087.89
<b>Total Other Purchased Services</b>	<b>\$97,909.36</b>	<b>\$171,566.25</b>		<b>\$269,475.61</b>
<b>600 Supplies</b>				
610 General Supplies	1,242.79	217.19		1,459.98
640 Books and Periodicals	722.84	1,265.65		1,988.49
<b>Total Supplies</b>	<b>\$1,965.63</b>	<b>\$1,482.84</b>		<b>\$3,448.47</b>
<b>Total 1240 Academic Support</b>	<b>\$1,553,711.47</b>	<b>\$1,079,380.54</b>	<b>\$122,167.46</b>	<b>\$2,755,259.47</b>

**General Fund (10)**

	<u>Elementary</u>	<u>Secondary</u>	<u>Federal</u>	<u>Total</u>
<b>1241 Learning Support – Public</b>				
<b>100 Personnel Services – Salaries</b>				
100 Personnel Services – Salaries	698,940.68	548,847.77	85,225.00	1,333,013.45
<b>Total Personnel Services – Salaries</b>	<b>\$698,940.68</b>	<b>\$548,847.77</b>	<b>\$85,225.00</b>	<b>\$1,333,013.45</b>
<b>200 Personnel Services – Employee Benefits</b>				
210 Group Insurance – Contracted Provider	251,856.43	147,877.40	17,781.48	417,515.31
220 Social Security Contributions	53,051.37	40,740.22	6,423.77	100,215.36
230 PSERS Retirement Contributions	191,619.69	141,822.48	11,011.07	344,453.24
260 Workers' Compensation	3,494.59	2,744.32	426.14	6,665.05
290 Other Current Employee Benefits	5,953.74	6,734.26	1,300.00	13,988.00
<b>Total Personnel Services – Employee Benefits</b>	<b>\$505,975.82</b>	<b>\$339,918.68</b>	<b>\$36,942.46</b>	<b>\$882,836.96</b>
<b>300 Purchased Professional and Technical Services</b>				
330 Other Professional Services		17,565.00		17,565.00
<b>Total Purchased Professional and Technical Services</b>		<b>\$17,565.00</b>		<b>\$17,565.00</b>
<b>500 Other Purchased Services</b>				
510 Student Transportation Services		7,128.96		7,128.96
561 Tuition To Other School Districts Within the State		1,243.45		1,243.45
562 Tuition To Pennsylvania Charter Schools	84,514.76	157,573.13		242,087.89
<b>Total Other Purchased Services</b>	<b>\$84,514.76</b>	<b>\$165,945.54</b>		<b>\$250,460.30</b>
<b>600 Supplies</b>				
610 General Supplies	1,071.09	204.23		1,275.32
640 Books and Periodicals	375.26	1,248.75		1,624.01
<b>Total Supplies</b>	<b>\$1,446.35</b>	<b>\$1,452.98</b>		<b>\$2,899.33</b>
<b>Total 1241 Learning Support – Public</b>	<b>\$1,290,877.61</b>	<b>\$1,073,729.97</b>	<b>\$122,167.46</b>	<b>\$2,486,775.04</b>

General Fund (10)

1243 Gifted Support

	<u>Elementary</u>	<u>Secondary</u>	<u>Federal</u>	<u>Total</u>
<b>100 Personnel Services – Salaries</b>				
100 Personnel Services – Salaries	157,629.00			157,629.00
<b>Total Personnel Services – Salaries</b>	<b>\$157,629.00</b>			<b>\$157,629.00</b>
<b>200 Personnel Services – Employee Benefits</b>				
210 Group Insurance – Contracted Provider	35,538.40			35,538.40
220 Social Security Contributions	11,633.20			11,633.20
230 PSERS Retirement Contributions	40,731.30			40,731.30
260 Workers' Compensation	788.08			788.08
290 Other Current Employee Benefits	2,600.00			2,600.00
<b>Total Personnel Services – Employee Benefits</b>	<b>\$91,290.98</b>			<b>\$91,290.98</b>
<b>500 Other Purchased Services</b>				
510 Student Transportation Services	13,394.60	5,620.71		19,015.31
<b>Total Other Purchased Services</b>	<b>\$13,394.60</b>	<b>\$5,620.71</b>		<b>\$19,015.31</b>
<b>600 Supplies</b>				
610 General Supplies	171.70	12.96		184.66
640 Books and Periodicals	347.58	16.90		364.48
<b>Total Supplies</b>	<b>\$519.28</b>	<b>\$29.86</b>		<b>\$549.14</b>
<b>Total 1243 Gifted Support</b>	<b>\$262,833.86</b>	<b>\$5,650.57</b>		<b>\$268,484.43</b>

**General Fund (10)**

**1270 Multi-Handicapped Support**

	<u>Elementary</u>	<u>Secondary</u>	<u>Federal</u>	<u>Total</u>
<b>100 Personnel Services – Salaries</b>				
100 Personnel Services – Salaries	14,817.60			14,817.60
<b>Total Personnel Services – Salaries</b>	<b>\$14,817.60</b>			<b>\$14,817.60</b>
<b>200 Personnel Services – Employee Benefits</b>				
210 Group Insurance – Contracted Provider	256.92	(3.63)		253.29
220 Social Security Contributions	1,133.58			1,133.58
230 PSERS Retirement Contributions	3,828.93			3,828.93
260 Workers' Compensation	74.13			74.13
<b>Total Personnel Services – Employee Benefits</b>	<b>\$5,293.56</b>	<b>(\$3.63)</b>		<b>\$5,289.93</b>
<b>500 Other Purchased Services</b>				
563 Tuition To Nonpublic Schools		43,105.72		43,105.72
568 Tuition To Private Residential Rehabilitative Institutions (PRRI) [In-State] and Detention Centers		3,179.26		3,179.26
<b>Total Other Purchased Services</b>		<b>\$46,284.98</b>		<b>\$46,284.98</b>
<b>Total 1270 Multi-Handicapped Support</b>	<b>\$20,111.16</b>	<b>\$46,281.35</b>		<b>\$66,392.51</b>



**General Fund (10)**

**1290 Special Programs - Other Support**

**300 Purchased Professional and Technical Services**

329 Professional Educational Services – Other

	<u>Elementary</u>	<u>Secondary</u>	<u>Federal</u>	<u>Total</u>
--	-------------------	------------------	----------------	--------------

**500 Other Purchased Services**

567 Tuition To Approved Private Schools (APS) and PA Chartered Schools for the Deaf and Blind

580 Travel

**600 Supplies**

610 General Supplies

**Total 1290 Special Programs - Other Support**

	<u>Elementary</u>	<u>Secondary</u>	<u>Federal</u>	<u>Total</u>
			935.44	935.44
<b>Total Purchased Professional and Technical Services</b>			<b>\$935.44</b>	<b>\$935.44</b>
		80,943.84		80,943.84
			2,348.99	2,348.99
<b>Total Other Purchased Services</b>		<b>\$80,943.84</b>	<b>\$2,348.99</b>	<b>\$83,292.83</b>
			6,223.31	6,223.31
<b>Total Supplies</b>			<b>\$6,223.31</b>	<b>\$6,223.31</b>
<b>Total 1290 Special Programs - Other Support</b>		<b>\$80,943.84</b>	<b>\$9,507.74</b>	<b>\$90,451.58</b>

General Fund (10)

1300 Vocational Education

Elementary

Secondary

Federal

Total

500 Other Purchased Services

564 Tuition To Career and Technology Centers

666,622.10

666,622.10

**Total Other Purchased Services**

**\$666,622.10**

**\$666,622.10**

**Total 1300 Vocational Education**

**\$666,622.10**

**\$666,622.10**

**General Fund (10)**

	<u>Elementary</u>	<u>Secondary</u>	<u>Federal</u>	<u>Total</u>
<b>1400 Other Instructional Programs – Elementary / Secondary</b>				
<b>100 Personnel Services – Salaries</b>				
100 Personnel Services – Salaries	36,413.10	197,600.64	5,931.46	239,945.20
<b>Total Personnel Services – Salaries</b>	<b>\$36,413.10</b>	<b>\$197,600.64</b>	<b>\$5,931.46</b>	<b>\$239,945.20</b>
<b>200 Personnel Services – Employee Benefits</b>				
210 Group Insurance – Contracted Provider		20,722.37		20,722.37
220 Social Security Contributions	2,759.32	14,603.08	445.13	17,807.53
230 PSERS Retirement Contributions	9,316.48	50,963.98	766.35	61,046.81
260 Workers' Compensation	182.19	988.02	29.66	1,199.87
290 Other Current Employee Benefits		1,300.00		1,300.00
<b>Total Personnel Services – Employee Benefits</b>	<b>\$12,257.99</b>	<b>\$88,577.45</b>	<b>\$1,241.14</b>	<b>\$102,076.58</b>
<b>300 Purchased Professional and Technical Services</b>				
323 Professional Educational Services – Other Educational Agencies	225.82	96.78		322.60
<b>Total Purchased Professional and Technical Services</b>	<b>\$225.82</b>	<b>\$96.78</b>		<b>\$322.60</b>
<b>400 Purchased Property Services</b>				
430 Repairs and Maintenance Services		12.50		12.50
<b>Total Purchased Property Services</b>		<b>\$12.50</b>		<b>\$12.50</b>
<b>500 Other Purchased Services</b>				
510 Student Transportation Services	547.64	452.80		1,000.44
561 Tuition To Other School Districts Within the State		29,149.65		29,149.65
563 Tuition To Nonpublic Schools		79,392.45		79,392.45
<b>Total Other Purchased Services</b>	<b>\$547.64</b>	<b>\$108,994.90</b>		<b>\$109,542.54</b>
<b>600 Supplies</b>				
610 General Supplies		385.88		385.88
630 Food	1,283.38	1,061.12		2,344.50
<b>Total Supplies</b>	<b>\$1,283.38</b>	<b>\$1,447.00</b>		<b>\$2,730.38</b>
<b>Total 1400 Other Instructional Programs – Elementary / Secondary</b>	<b>\$50,727.93</b>	<b>\$396,729.27</b>	<b>\$7,172.60</b>	<b>\$454,629.80</b>

**General Fund (10)**

**1410 Drivers' Education**

**100 Personnel Services – Salaries**

	<u>Elementary</u>	<u>Secondary</u>	<u>Federal</u>	<u>Total</u>
100 Personnel Services – Salaries		59,911.80		59,911.80
<b>Total Personnel Services – Salaries</b>		<b>\$59,911.80</b>		<b>\$59,911.80</b>

**200 Personnel Services – Employee Benefits**

210 Group Insurance – Contracted Provider		2,933.53		2,933.53
220 Social Security Contributions		4,298.90		4,298.90
230 PSERS Retirement Contributions		15,385.23		15,385.23
260 Workers' Compensation		299.60		299.60
<b>Total Personnel Services – Employee Benefits</b>		<b>\$22,917.26</b>		<b>\$22,917.26</b>

**400 Purchased Property Services**

430 Repairs and Maintenance Services		12.50		12.50
<b>Total Purchased Property Services</b>		<b>\$12.50</b>		<b>\$12.50</b>

**600 Supplies**

610 General Supplies		385.88		385.88
<b>Total Supplies</b>		<b>\$385.88</b>		<b>\$385.88</b>

<b>Total 1410 Drivers' Education</b>		<b>\$83,227.44</b>		<b>\$83,227.44</b>
--------------------------------------	--	--------------------	--	--------------------

**General Fund (10)**

	<u>Elementary</u>	<u>Secondary</u>	<u>Federal</u>	<u>Total</u>
<b>1420 Summer School</b>				
<b>100 Personnel Services – Salaries</b>				
100 Personnel Services – Salaries	12,743.76	2,872.49		15,616.25
<b>Total Personnel Services – Salaries</b>	<b>\$12,743.76</b>	<b>\$2,872.49</b>		<b>\$15,616.25</b>
<b>200 Personnel Services – Employee Benefits</b>				
220 Social Security Contributions	965.32	217.90		1,183.22
230 PSERS Retirement Contributions	3,297.62	742.25		4,039.87
260 Workers’ Compensation	63.83	14.36		78.19
<b>Total Personnel Services – Employee Benefits</b>	<b>\$4,326.77</b>	<b>\$974.51</b>		<b>\$5,301.28</b>
<b>500 Other Purchased Services</b>				
510 Student Transportation Services	547.64	452.80		1,000.44
<b>Total Other Purchased Services</b>	<b>\$547.64</b>	<b>\$452.80</b>		<b>\$1,000.44</b>
<b>Total 1420 Summer School</b>	<b>\$17,618.17</b>	<b>\$4,299.80</b>		<b>\$21,917.97</b>

**General Fund (10)**

	<u>Elementary</u>	<u>Secondary</u>	<u>Federal</u>	<u>Total</u>
<b>1430 Homebound Instruction</b>				
<b>100 Personnel Services – Salaries</b>				
100 Personnel Services – Salaries	7,415.19	24,227.47		31,642.66
<b>Total Personnel Services – Salaries</b>	<b>\$7,415.19</b>	<b>\$24,227.47</b>		<b>\$31,642.66</b>
<b>200 Personnel Services – Employee Benefits</b>				
220 Social Security Contributions	551.54	1,814.68		2,366.22
230 PSERS Retirement Contributions	1,818.82	6,260.42		8,079.24
260 Workers’ Compensation	37.06	121.15		158.21
<b>Total Personnel Services – Employee Benefits</b>	<b>\$2,407.42</b>	<b>\$8,196.25</b>		<b>\$10,603.67</b>
<b>300 Purchased Professional and Technical Services</b>				
323 Professional Educational Services – Other Educational Agencies	225.82	96.78		322.60
<b>Total Purchased Professional and Technical Services</b>	<b>\$225.82</b>	<b>\$96.78</b>		<b>\$322.60</b>
<b>Total 1430 Homebound Instruction</b>	<b>\$10,048.43</b>	<b>\$32,520.50</b>		<b>\$42,568.93</b>

General Fund (10)

1440 Alternative Regular Education Programs

Elementary

Secondary

Federal

Total

100 Personnel Services – Salaries

100 Personnel Services – Salaries

87,225.00

87,225.00

**Total Personnel Services – Salaries**

**\$87,225.00**

**\$87,225.00**

200 Personnel Services – Employee Benefits

210 Group Insurance – Contracted Provider

17,788.84

17,788.84

220 Social Security Contributions

6,499.86

6,499.86

230 PSERS Retirement Contributions

22,538.88

22,538.88

260 Workers' Compensation

436.04

436.04

290 Other Current Employee Benefits

1,300.00

1,300.00

**Total Personnel Services – Employee Benefits**

**\$48,563.62**

**\$48,563.62**

500 Other Purchased Services

561 Tuition To Other School Districts Within the State

29,149.65

29,149.65

563 Tuition To Nonpublic Schools

79,392.45

79,392.45

**Total Other Purchased Services**

**\$108,542.10**

**\$108,542.10**

**Total 1440 Alternative Regular Education Programs**

**\$244,330.72**

**\$244,330.72**

General Fund (10)

1441 Adjudicated / Court-Placed Programs

Elementary

Secondary

Federal

Total

500 Other Purchased Services

561 Tuition To Other School Districts Within the State

4,629.42

4,629.42

**Total Other Purchased Services**

**\$4,629.42**

**\$4,629.42**

**Total 1441 Adjudicated / Court-Placed Programs**

**\$4,629.42**

**\$4,629.42**



**General Fund (10)**

	<u>Elementary</u>	<u>Secondary</u>	<u>Federal</u>	<u>Total</u>
<b>1442 Alternative Education Programs</b>				
<b>100 Personnel Services – Salaries</b>				
100 Personnel Services – Salaries		87,225.00		87,225.00
<b>Total Personnel Services – Salaries</b>		<b>\$87,225.00</b>		<b>\$87,225.00</b>
<b>200 Personnel Services – Employee Benefits</b>				
210 Group Insurance – Contracted Provider		17,788.84		17,788.84
220 Social Security Contributions		6,499.86		6,499.86
230 PSERS Retirement Contributions		22,538.88		22,538.88
260 Workers' Compensation		436.04		436.04
290 Other Current Employee Benefits		1,300.00		1,300.00
<b>Total Personnel Services – Employee Benefits</b>		<b>\$48,563.62</b>		<b>\$48,563.62</b>
<b>500 Other Purchased Services</b>				
561 Tuition To Other School Districts Within the State		24,520.23		24,520.23
563 Tuition To Nonpublic Schools		79,392.45		79,392.45
<b>Total Other Purchased Services</b>		<b>\$103,912.68</b>		<b>\$103,912.68</b>
<b>Total 1442 Alternative Education Programs</b>		<b>\$239,701.30</b>		<b>\$239,701.30</b>

General Fund (10)

1450 Instructional Programs Outside the Established School Day	<u>Elementary</u>	<u>Secondary</u>	<u>Federal</u>	<u>Total</u>
<b>100 Personnel Services – Salaries</b>				
100 Personnel Services – Salaries	16,254.15	23,363.88	5,931.46	45,549.49
<b>Total Personnel Services – Salaries</b>	<b>\$16,254.15</b>	<b>\$23,363.88</b>	<b>\$5,931.46</b>	<b>\$45,549.49</b>
<b>200 Personnel Services – Employee Benefits</b>				
220 Social Security Contributions	1,242.46	1,771.74	445.13	3,459.33
230 PSERS Retirement Contributions	4,200.04	6,037.20	766.35	11,003.59
260 Workers’ Compensation	81.30	116.87	29.66	227.83
<b>Total Personnel Services – Employee Benefits</b>	<b>\$5,523.80</b>	<b>\$7,925.81</b>	<b>\$1,241.14</b>	<b>\$14,690.75</b>
<b>600 Supplies</b>				
630 Food	1,283.38	1,061.12		2,344.50
<b>Total Supplies</b>	<b>\$1,283.38</b>	<b>\$1,061.12</b>		<b>\$2,344.50</b>
<b>Total 1450 Instructional Programs Outside the Established School Day</b>	<b>\$23,061.33</b>	<b>\$32,350.81</b>	<b>\$7,172.60</b>	<b>\$62,584.74</b>

General Fund (10)

1500 Nonpublic School Programs

300 Purchased Professional and Technical Services

329 Professional Educational Services – Other

**Total Purchased Professional and Technical Services**

**Total 1500 Nonpublic School Programs**

Elementary

Secondary

Federal

Total

5,629.56

5,629.56

**\$5,629.56**

**\$5,629.56**

**\$5,629.56**

**\$5,629.56**

**General Fund (10)**

**1800 Pre-Kindergarten**

	<u>Elementary</u>	<u>Secondary</u>	<u>Federal</u>	<u>Total</u>
<b>100 Personnel Services – Salaries</b>				
100 Personnel Services – Salaries				192,877.33
<b>Total Personnel Services – Salaries</b>				<b>\$192,877.33</b>
<b>200 Personnel Services – Employee Benefits</b>				
210 Group Insurance – Contracted Provider				30,593.13
220 Social Security Contributions				7,328.17
230 PSERS Retirement Contributions				24,273.72
260 Workers' Compensation				1,010.12
290 Other Current Employee Benefits				1,639.65
<b>Total Personnel Services – Employee Benefits</b>				<b>\$64,844.79</b>
<b>300 Purchased Professional and Technical Services</b>				
329 Professional Educational Services – Other				13,746.53
<b>Total Purchased Professional and Technical Services</b>				<b>\$13,746.53</b>
<b>400 Purchased Property Services</b>				
420 Utility Services				5,229.61
<b>Total Purchased Property Services</b>				<b>\$5,229.61</b>
<b>500 Other Purchased Services</b>				
510 Student Transportation Services				15,275.29
580 Travel				655.50
<b>Total Other Purchased Services</b>				<b>\$15,930.79</b>
<b>600 Supplies</b>				
610 General Supplies				5,063.55
620 Energy				1,296.73
630 Food				12,739.35
640 Books and Periodicals				7,547.82
<b>Total Supplies</b>				<b>\$26,647.45</b>
<b>700 Property</b>				
750 Equipment – Original and Additional				1,033.00
<b>Total Property</b>				<b>\$1,033.00</b>
<b>Total 1800 Pre-Kindergarten</b>				<b>\$320,309.50</b>

General Fund (10)

1801 Pre-K Instruction

Elementary

Secondary

Federal

Total

100 Personnel Services – Salaries

100 Personnel Services – Salaries

173,966.54

**Total Personnel Services – Salaries**

**\$173,966.54**

200 Personnel Services – Employee Benefits

210 Group Insurance – Contracted Provider

22,442.78

220 Social Security Contributions

6,619.06

230 PSERS Retirement Contributions

21,830.45

260 Workers' Compensation

888.91

290 Other Current Employee Benefits

1,337.80

**Total Personnel Services – Employee Benefits**

**\$53,119.00**

300 Purchased Professional and Technical Services

329 Professional Educational Services – Other

13,746.53

**Total Purchased Professional and Technical Services**

**\$13,746.53**

600 Supplies

610 General Supplies

5,063.55

640 Books and Periodicals

7,547.82

**Total Supplies**

**\$12,611.37**

700 Property

750 Equipment – Original and Additional

1,033.00

**Total Property**

**\$1,033.00**

**Total 1801 Pre-K Instruction**

**\$254,476.44**

General Fund (10)

1802 Pre-K Administrative Support

Elementary

Secondary

Federal

Total

100 Personnel Services – Salaries

100 Personnel Services – Salaries

8,899.07

**Total Personnel Services – Salaries**

**\$8,899.07**

200 Personnel Services – Employee Benefits

210 Group Insurance – Contracted Provider

3,256.14

220 Social Security Contributions

340.39

230 PSERS Retirement Contributions

1,149.76

260 Workers' Compensation

71.20

290 Other Current Employee Benefits

301.85

**Total Personnel Services – Employee Benefits**

**\$5,119.34**

**Total 1802 Pre-K Administrative Support**

**\$14,018.41**

**General Fund (10)**

**1803 Pre-K Operations and Maintenance**

Elementary                      Secondary                      Federal                      Total

<b>100 Personnel Services – Salaries</b>				
100 Personnel Services – Salaries				10,011.72
<b>Total Personnel Services – Salaries</b>				<b>\$10,011.72</b>
<b>200 Personnel Services – Employee Benefits</b>				
210 Group Insurance – Contracted Provider				4,894.21
220 Social Security Contributions				368.72
230 PSERS Retirement Contributions				1,293.51
260 Workers' Compensation				50.01
<b>Total Personnel Services – Employee Benefits</b>				<b>\$6,606.45</b>
<b>400 Purchased Property Services</b>				
420 Utility Services				5,229.61
<b>Total Purchased Property Services</b>				<b>\$5,229.61</b>
<b>600 Supplies</b>				
620 Energy				1,296.73
<b>Total Supplies</b>				<b>\$1,296.73</b>
<b>Total 1803 Pre-K Operations and Maintenance</b>				<b>\$23,144.51</b>

General Fund (10)

1804 Pre-K Student Transportation

Elementary

Secondary

Federal

Total

500 Other Purchased Services

510 Student Transportation Services

15,275.29

**Total Other Purchased Services**

**\$15,275.29**

**Total 1804 Pre-K Student Transportation**

**\$15,275.29**



LEA : 128323703 Indiana Area SD

Printed 11/18/2016 9:54:30 AM

General Fund (10)

1805 Pre-K Food Services

Elementary

Secondary

Federal

Total

600 Supplies

630 Food

12,739.35

**Total Supplies**

**\$12,739.35**

**Total 1805 Pre-K Food Services**

**\$12,739.35**

LEA : 128323703 Indiana Area SD

Printed 11/18/2016 9:54:30 AM

General Fund (10)

1806 Pre-K Professional Development

Elementary

Secondary

Federal

Total

500 Other Purchased Services

580 Travel

655.50

**Total Other Purchased Services**

**\$655.50**

**Total 1806 Pre-K Professional Development**

**\$655.50**

**General Fund (10)**

**2000 Support Services**

**Total**

**100 Personnel Services – Salaries**

100 Personnel Services – Salaries 5,449,736.94

**Total Personnel Services – Salaries \$5,449,736.94**

**200 Personnel Services – Employee Benefits**

210 Group Insurance – Contracted Provider 1,517,597.65

220 Social Security Contributions 412,425.17

230 PSERS Retirement Contributions 1,381,668.79

240 Tuition Reimbursement 5,544.00

250 Unemployment Compensation 1,560.82

260 Workers' Compensation 26,877.81

290 Other Current Employee Benefits 81,243.31

**Total Personnel Services – Employee Benefits \$3,426,917.55**

**300 Purchased Professional and Technical Services**

322 Professional Educational Services – Ius 197,555.14

329 Professional Educational Services – Other 60,640.07

330 Other Professional Services 384,707.77

340 Technical Services 135,747.65

**Total Purchased Professional and Technical Services \$778,650.63**

**400 Purchased Property Services**

410 Cleaning Services 22,483.11

420 Utility Services 499,335.18

430 Repairs and Maintenance Services 198,853.08

440 Rentals 46,602.86

490 Other Purchased Property Services 1,228.00

**Total Purchased Property Services \$768,502.23**

**500 Other Purchased Services**

510 Student Transportation Services 561.60

513 Contracted Carriers 1,449,766.65

516 Student Transportation Services From the IU 147,819.69

520 Insurance – General 17,862.00

523 General Property and Liability Insurance 117,786.50

530 Communications 104,506.01

549 Other Advertising/Public Relations 10,175.19

550 Printing and Binding 6,761.79

580 Travel 73,863.32

595 IU Payments By Withholding 146,153.26

**Total Other Purchased Services \$2,075,256.01**

**600 Supplies**

610 General Supplies 347,282.98

620 Energy 131,937.83

640 Books and Periodicals 29,770.30

**Total Supplies \$508,991.11**

LEA : 128323703 Indiana Area SD

Printed 11/18/2016 9:54:32 AM

**General Fund (10)**

**2000 Support Services**

**Total**

**700 Property**

750 Equipment – Original and Additional

12,444.53

760 Equipment – Replacement

11,987.17

**Total Property**

**\$24,431.70**

**800 Other Objects**

810 Dues and Fees

31,848.32

820 Claims and Judgments Against the LEA

32,163.30

**Total Other Objects**

**\$64,011.62**

**Total 2000 Support Services**

**\$13,096,497.79**

LEA : 128323703 Indiana Area SD

Printed 11/18/2016 9:54:32 AM

Page - 3 of 46

**General Fund (10)****2100 Support Services – Students**

	<u>Elementary</u>	<u>Secondary</u>	<u>Federal</u>	<u>Total</u>
<b>100 Personnel Services – Salaries</b>				
100 Personnel Services – Salaries	316,718.89	423,369.15		782,021.60
<b>Total Personnel Services – Salaries</b>	<b>\$316,718.89</b>	<b>\$423,369.15</b>		<b>\$782,021.60</b>
<b>200 Personnel Services – Employee Benefits</b>				
210 Group Insurance – Contracted Provider	55,793.34	114,738.37		197,655.93
220 Social Security Contributions	23,926.05	32,355.50		59,475.87
230 PSERS Retirement Contributions	81,840.08	109,398.40		202,074.13
260 Workers' Compensation	1,583.56	2,116.67		3,909.85
290 Other Current Employee Benefits	5,271.44	422.56		5,694.00
<b>Total Personnel Services – Employee Benefits</b>	<b>\$168,414.47</b>	<b>\$259,031.50</b>		<b>\$468,809.78</b>
<b>300 Purchased Professional and Technical Services</b>				
322 Professional Educational Services – lus	27,875.00	27,876.00	141,804.14	197,555.14
329 Professional Educational Services – Other	23,733.10	19,646.04		43,379.14
330 Other Professional Services	13,581.82	13,864.20		27,446.02
<b>Total Purchased Professional and Technical Services</b>	<b>\$65,189.92</b>	<b>\$61,386.24</b>	<b>\$141,804.14</b>	<b>\$268,380.30</b>
<b>400 Purchased Property Services</b>				
440 Rentals	930.90	4,431.63		5,362.53
<b>Total Purchased Property Services</b>	<b>\$930.90</b>	<b>\$4,431.63</b>		<b>\$5,362.53</b>
<b>500 Other Purchased Services</b>				
510 Student Transportation Services		561.60		561.60
530 Communications	949.32	1,970.92		2,920.24
<b>Total Other Purchased Services</b>	<b>\$949.32</b>	<b>\$2,532.52</b>		<b>\$3,481.84</b>
<b>600 Supplies</b>				
610 General Supplies	508.86	(1,242.66)		(733.80)
640 Books and Periodicals	360.40	(102.00)		258.40
<b>Total Supplies</b>	<b>\$869.26</b>	<b>(\$1,344.66)</b>		<b>(\$475.40)</b>
<b>Total 2100 Support Services – Students</b>	<b>\$553,072.76</b>	<b>\$749,406.38</b>	<b>\$141,804.14</b>	<b>\$1,527,580.65</b>

**General Fund (10)**

**2120 Guidance Services**

	<u>Elementary</u>	<u>Secondary</u>	<u>Federal</u>	<u>Total</u>
<b>100 Personnel Services – Salaries</b>				
100 Personnel Services – Salaries	313,284.04	420,529.15		733,813.19
<b>Total Personnel Services – Salaries</b>	<b>\$313,284.04</b>	<b>\$420,529.15</b>		<b>\$733,813.19</b>
<b>200 Personnel Services – Employee Benefits</b>				
210 Group Insurance – Contracted Provider	49,777.39	109,764.26		159,541.65
220 Social Security Contributions	23,664.65	32,139.37		55,804.02
230 PSERS Retirement Contributions	80,952.48	108,664.51		189,616.99
260 Workers' Compensation	1,566.44	2,102.51		3,668.95
290 Other Current Employee Benefits	5,271.44	422.56		5,694.00
<b>Total Personnel Services – Employee Benefits</b>	<b>\$161,232.40</b>	<b>\$253,093.21</b>		<b>\$414,325.61</b>
<b>300 Purchased Professional and Technical Services</b>				
329 Professional Educational Services – Other	23,733.10	19,646.04		43,379.14
330 Other Professional Services		2,634.52		2,634.52
<b>Total Purchased Professional and Technical Services</b>	<b>\$23,733.10</b>	<b>\$22,280.56</b>		<b>\$46,013.66</b>
<b>400 Purchased Property Services</b>				
440 Rentals	930.90	4,431.63		5,362.53
<b>Total Purchased Property Services</b>	<b>\$930.90</b>	<b>\$4,431.63</b>		<b>\$5,362.53</b>
<b>500 Other Purchased Services</b>				
510 Student Transportation Services		561.60		561.60
530 Communications	949.32	1,970.92		2,920.24
<b>Total Other Purchased Services</b>	<b>\$949.32</b>	<b>\$2,532.52</b>		<b>\$3,481.84</b>
<b>600 Supplies</b>				
610 General Supplies	508.86	(1,242.66)		(733.80)
640 Books and Periodicals	360.40	(102.00)		258.40
<b>Total Supplies</b>	<b>\$869.26</b>	<b>(\$1,344.66)</b>		<b>(\$475.40)</b>
<b>Total 2120 Guidance Services</b>	<b>\$500,999.02</b>	<b>\$701,522.41</b>		<b>\$1,202,521.43</b>

General Fund (10)

2130 Attendance Services

Elementary

Secondary

Federal

Total

100 Personnel Services – Salaries

100 Personnel Services – Salaries

41,933.56

**Total Personnel Services – Salaries**

**\$41,933.56**

200 Personnel Services – Employee Benefits

210 Group Insurance – Contracted Provider

27,124.22

220 Social Security Contributions

3,194.32

230 PSERS Retirement Contributions

10,835.65

260 Workers' Compensation

209.62

**Total Personnel Services – Employee Benefits**

**\$41,363.81**

**Total 2130 Attendance Services**

**\$83,297.37**

**General Fund (10)**

**2140 Psychological Services**

**100 Personnel Services – Salaries**

	<u>Elementary</u>	<u>Secondary</u>	<u>Federal</u>	<u>Total</u>
100 Personnel Services – Salaries	3,434.85	2,840.00		6,274.85
<b>Total Personnel Services – Salaries</b>	<b>\$3,434.85</b>	<b>\$2,840.00</b>		<b>\$6,274.85</b>

**200 Personnel Services – Employee Benefits**

210 Group Insurance – Contracted Provider	6,015.95	4,974.11		10,990.06
220 Social Security Contributions	261.40	216.13		477.53
230 PSERS Retirement Contributions	887.60	733.89		1,621.49
260 Workers' Compensation	17.12	14.16		31.28
<b>Total Personnel Services – Employee Benefits</b>	<b>\$7,182.07</b>	<b>\$5,938.29</b>		<b>\$13,120.36</b>

**300 Purchased Professional and Technical Services**

322 Professional Educational Services – Ius	27,875.00	27,876.00	141,804.14	197,555.14
330 Other Professional Services	13,581.82	11,229.68		24,811.50
<b>Total Purchased Professional and Technical Services</b>	<b>\$41,456.82</b>	<b>\$39,105.68</b>	<b>\$141,804.14</b>	<b>\$222,366.64</b>
<b>Total 2140 Psychological Services</b>	<b>\$52,073.74</b>	<b>\$47,883.97</b>	<b>\$141,804.14</b>	<b>\$241,761.85</b>



**General Fund (10)**

	<u>Elementary</u>	<u>Secondary</u>	<u>Federal</u>	<u>Total</u>
<b>2200 Support Services – Instructional Staff</b>				
<b>100 Personnel Services – Salaries</b>				
100 Personnel Services – Salaries	426,322.86	260,686.05	12,581.64	699,590.55
<b>Total Personnel Services – Salaries</b>	<b>\$426,322.86</b>	<b>\$260,686.05</b>	<b>\$12,581.64</b>	<b>\$699,590.55</b>
<b>200 Personnel Services – Employee Benefits</b>				
210 Group Insurance – Contracted Provider	92,140.46	53,941.39		146,081.85
220 Social Security Contributions	32,328.12	19,881.12	962.00	53,171.24
230 PSERS Retirement Contributions	111,053.61	68,096.89	1,626.00	180,776.50
260 Workers' Compensation	2,143.36	1,313.15	41.00	3,497.51
290 Other Current Employee Benefits	6,245.99	3,014.57		9,260.56
<b>Total Personnel Services – Employee Benefits</b>	<b>\$243,911.54</b>	<b>\$146,247.12</b>	<b>\$2,629.00</b>	<b>\$392,787.66</b>
<b>300 Purchased Professional and Technical Services</b>				
329 Professional Educational Services – Other	8,758.36	7,241.57	1,261.00	17,260.93
330 Other Professional Services	73.90	61.10	1,319.50	1,454.50
<b>Total Purchased Professional and Technical Services</b>	<b>\$8,832.26</b>	<b>\$7,302.67</b>	<b>\$2,580.50</b>	<b>\$18,715.43</b>
<b>400 Purchased Property Services</b>				
440 Rentals	983.47	4,572.08		5,555.55
<b>Total Purchased Property Services</b>	<b>\$983.47</b>	<b>\$4,572.08</b>		<b>\$5,555.55</b>
<b>500 Other Purchased Services</b>				
580 Travel	28,498.25	21,703.74	1,526.73	51,728.72
<b>Total Other Purchased Services</b>	<b>\$28,498.25</b>	<b>\$21,703.74</b>	<b>\$1,526.73</b>	<b>\$51,728.72</b>
<b>600 Supplies</b>				
610 General Supplies	1,014.26	680.52		1,694.78
640 Books and Periodicals	12,350.44	15,756.74		28,107.18
<b>Total Supplies</b>	<b>\$13,364.70</b>	<b>\$16,437.26</b>		<b>\$29,801.96</b>
<b>800 Other Objects</b>				
810 Dues and Fees	1,322.52	1,093.48		2,416.00
<b>Total Other Objects</b>	<b>\$1,322.52</b>	<b>\$1,093.48</b>		<b>\$2,416.00</b>
<b>Total 2200 Support Services – Instructional Staff</b>	<b>\$723,235.60</b>	<b>\$458,042.40</b>	<b>\$19,317.87</b>	<b>\$1,200,595.87</b>

**General Fund (10)**

	<u>Elementary</u>	<u>Secondary</u>	<u>Federal</u>	<u>Total</u>
<b>2250 School Library Services</b>				
<b>100 Personnel Services – Salaries</b>				
100 Personnel Services – Salaries	286,965.55	145,462.95		432,428.50
<b>Total Personnel Services – Salaries</b>	<b>\$286,965.55</b>	<b>\$145,462.95</b>		<b>\$432,428.50</b>
<b>200 Personnel Services – Employee Benefits</b>				
210 Group Insurance – Contracted Provider	54,764.36	23,038.16		77,802.52
220 Social Security Contributions	21,736.63	11,123.90		32,860.53
230 PSERS Retirement Contributions	74,154.02	37,587.65		111,741.67
260 Workers' Compensation	1,434.70	727.22		2,161.92
290 Other Current Employee Benefits	2,600.00			2,600.00
<b>Total Personnel Services – Employee Benefits</b>	<b>\$154,689.71</b>	<b>\$72,476.93</b>		<b>\$227,166.64</b>
<b>400 Purchased Property Services</b>				
440 Rentals	983.47	4,572.08		5,555.55
<b>Total Purchased Property Services</b>	<b>\$983.47</b>	<b>\$4,572.08</b>		<b>\$5,555.55</b>
<b>600 Supplies</b>				
610 General Supplies	665.12	391.83		1,056.95
640 Books and Periodicals	12,230.07	15,657.22		27,887.29
<b>Total Supplies</b>	<b>\$12,895.19</b>	<b>\$16,049.05</b>		<b>\$28,944.24</b>
<b>Total 2250 School Library Services</b>	<b>\$455,533.92</b>	<b>\$238,561.01</b>		<b>\$694,094.93</b>

**General Fund (10)**

	<u>Elementary</u>	<u>Secondary</u>	<u>Federal</u>	<u>Total</u>
<b>2260 Instruction and Curriculum Development Services</b>				
<b>100 Personnel Services – Salaries</b>				
100 Personnel Services – Salaries	133,799.90	110,628.13	12,581.64	257,009.67
<b>Total Personnel Services – Salaries</b>	<b>\$133,799.90</b>	<b>\$110,628.13</b>	<b>\$12,581.64</b>	<b>\$257,009.67</b>
<b>200 Personnel Services – Employee Benefits</b>				
210 Group Insurance – Contracted Provider	37,376.10	30,903.23		68,279.33
220 Social Security Contributions	10,167.70	8,406.83	962.00	19,536.53
230 PSERS Retirement Contributions	35,463.56	29,321.90	1,626.00	66,411.46
260 Workers' Compensation	680.87	562.96	41.00	1,284.83
290 Other Current Employee Benefits	3,645.99	3,014.57		6,660.56
<b>Total Personnel Services – Employee Benefits</b>	<b>\$87,334.22</b>	<b>\$72,209.49</b>	<b>\$2,629.00</b>	<b>\$162,172.71</b>
<b>300 Purchased Professional and Technical Services</b>				
329 Professional Educational Services – Other	273.70	226.30		500.00
330 Other Professional Services	73.90	61.10	1,319.50	1,454.50
<b>Total Purchased Professional and Technical Services</b>	<b>\$347.60</b>	<b>\$287.40</b>	<b>\$1,319.50</b>	<b>\$1,954.50</b>
<b>500 Other Purchased Services</b>				
580 Travel	677.11	559.84		1,236.95
<b>Total Other Purchased Services</b>	<b>\$677.11</b>	<b>\$559.84</b>		<b>\$1,236.95</b>
<b>600 Supplies</b>				
610 General Supplies	349.14	288.69		637.83
640 Books and Periodicals	120.37	99.52		219.89
<b>Total Supplies</b>	<b>\$469.51</b>	<b>\$388.21</b>		<b>\$857.72</b>
<b>800 Other Objects</b>				
810 Dues and Fees	1,322.52	1,093.48		2,416.00
<b>Total Other Objects</b>	<b>\$1,322.52</b>	<b>\$1,093.48</b>		<b>\$2,416.00</b>
<b>Total 2260 Instruction and Curriculum Development Services</b>	<b>\$223,950.86</b>	<b>\$185,166.55</b>	<b>\$16,530.14</b>	<b>\$425,647.55</b>

**General Fund (10)**

	<u>Elementary</u>	<u>Secondary</u>	<u>Federal</u>	<u>Total</u>
<b>2270 Instructional Staff Professional Development Services</b>				
<b>100 Personnel Services – Salaries</b>				
100 Personnel Services – Salaries	5,557.41	4,594.97		10,152.38
<b>Total Personnel Services – Salaries</b>	<b>\$5,557.41</b>	<b>\$4,594.97</b>		<b>\$10,152.38</b>
<b>200 Personnel Services – Employee Benefits</b>				
220 Social Security Contributions	423.79	350.39		774.18
230 PSERS Retirement Contributions	1,436.03	1,187.34		2,623.37
260 Workers’ Compensation	27.79	22.97		50.76
<b>Total Personnel Services – Employee Benefits</b>	<b>\$1,887.61</b>	<b>\$1,560.70</b>		<b>\$3,448.31</b>
<b>300 Purchased Professional and Technical Services</b>				
329 Professional Educational Services – Other	8,484.66	7,015.27	430.00	15,929.93
<b>Total Purchased Professional and Technical Services</b>	<b>\$8,484.66</b>	<b>\$7,015.27</b>	<b>\$430.00</b>	<b>\$15,929.93</b>
<b>500 Other Purchased Services</b>				
580 Travel	27,821.14	21,143.90	1,526.73	50,491.77
<b>Total Other Purchased Services</b>	<b>\$27,821.14</b>	<b>\$21,143.90</b>	<b>\$1,526.73</b>	<b>\$50,491.77</b>
<b>Total 2270 Instructional Staff Professional Development Services</b>	<b>\$43,750.82</b>	<b>\$34,314.84</b>	<b>\$1,956.73</b>	<b>\$80,022.39</b>

General Fund (10)

2280 Nonpublic Support Services

300 Purchased Professional and Technical Services

329 Professional Educational Services – Other

**Total Purchased Professional and Technical Services**

**Total 2280 Nonpublic Support Services**

<u>Elementary</u>	<u>Secondary</u>	<u>Federal</u>	<u>Total</u>
		831.00	831.00
		<b>\$831.00</b>	<b>\$831.00</b>
		<b>\$831.00</b>	<b>\$831.00</b>

**General Fund (10)**

**2300 Support Services – Administration**

	<u>Elementary</u>	<u>Secondary</u>	<u>Federal</u>	<u>Total</u>
<b>100 Personnel Services – Salaries</b>				
100 Personnel Services – Salaries	573,760.30	411,238.43		1,342,633.83
<b>Total Personnel Services – Salaries</b>	<b>\$573,760.30</b>	<b>\$411,238.43</b>		<b>\$1,342,633.83</b>
<b>200 Personnel Services – Employee Benefits</b>				
210 Group Insurance – Contracted Provider	114,768.18	124,795.97		293,171.15
220 Social Security Contributions	43,164.94	31,191.78		100,831.56
230 PSERS Retirement Contributions	147,665.44	105,423.87		328,981.75
240 Tuition Reimbursement	3,034.79	2,509.21		5,544.00
260 Workers' Compensation	2,842.11	2,056.34		6,366.65
290 Other Current Employee Benefits	12,592.96	10,797.95		32,250.27
<b>Total Personnel Services – Employee Benefits</b>	<b>\$324,068.42</b>	<b>\$276,775.12</b>		<b>\$767,145.38</b>
<b>300 Purchased Professional and Technical Services</b>				
330 Other Professional Services				49,500.50
340 Technical Services				135,747.65
<b>Total Purchased Professional and Technical Services</b>				<b>\$185,248.15</b>
<b>400 Purchased Property Services</b>				
440 Rentals	945.71	16,175.98		29,121.69
<b>Total Purchased Property Services</b>	<b>\$945.71</b>	<b>\$16,175.98</b>		<b>\$29,121.69</b>
<b>500 Other Purchased Services</b>				
520 Insurance – General				17,862.00
530 Communications	2,186.16	6,331.03		15,827.72
549 Other Advertising/Public Relations				4,214.05
550 Printing and Binding		1,138.69		4,786.90
580 Travel	266.79			2,222.91
<b>Total Other Purchased Services</b>	<b>\$2,452.95</b>	<b>\$7,469.72</b>		<b>\$44,913.58</b>
<b>600 Supplies</b>				
610 General Supplies	3,637.75	9,210.18		14,080.67
640 Books and Periodicals	219.00			1,167.73
<b>Total Supplies</b>	<b>\$3,856.75</b>	<b>\$9,210.18</b>		<b>\$15,248.40</b>
<b>700 Property</b>				
750 Equipment – Original and Additional	723.85	1,344.87		2,068.72
760 Equipment – Replacement	738.19	1,371.53		2,109.72
<b>Total Property</b>	<b>\$1,462.04</b>	<b>\$2,716.40</b>		<b>\$4,178.44</b>
<b>800 Other Objects</b>				
810 Dues and Fees	2,171.90	2,813.74		20,724.48
820 Claims and Judgments Against the LEA				32,163.30
<b>Total Other Objects</b>	<b>\$2,171.90</b>	<b>\$2,813.74</b>		<b>\$52,887.78</b>
<b>Total 2300 Support Services – Administration</b>	<b>\$908,718.07</b>	<b>\$726,399.57</b>		<b>\$2,441,377.25</b>

**General Fund (10)**

	<u>Elementary</u>	<u>Secondary</u>	<u>Federal</u>	<u>Total</u>
<b>2310 Board Services</b>				
<b>100 Personnel Services – Salaries</b>				
100 Personnel Services – Salaries				4,000.00
<b>Total Personnel Services – Salaries</b>				<b>\$4,000.00</b>
<b>200 Personnel Services – Employee Benefits</b>				
220 Social Security Contributions				302.47
230 PSERS Retirement Contributions				1,033.60
260 Workers’ Compensation				20.00
<b>Total Personnel Services – Employee Benefits</b>				<b>\$1,356.07</b>
<b>400 Purchased Property Services</b>				
440 Rentals				6,000.00
<b>Total Purchased Property Services</b>				<b>\$6,000.00</b>
<b>500 Other Purchased Services</b>				
520 Insurance – General				17,862.00
530 Communications				417.81
549 Other Advertising/Public Relations				1,113.80
580 Travel				1,622.10
<b>Total Other Purchased Services</b>				<b>\$21,015.71</b>
<b>600 Supplies</b>				
610 General Supplies				475.87
<b>Total Supplies</b>				<b>\$475.87</b>
<b>800 Other Objects</b>				
810 Dues and Fees				14,379.84
820 Claims and Judgments Against the LEA				32,163.30
<b>Total Other Objects</b>				<b>\$46,543.14</b>
<b>Total 2310 Board Services</b>				<b>\$79,390.79</b>

General Fund (10)

	<u>Elementary</u>	<u>Secondary</u>	<u>Federal</u>	<u>Total</u>
<b>2330 Tax Assessment and Collection Services</b>				
<b>100 Personnel Services – Salaries</b>				
100 Personnel Services – Salaries				63,934.10
<b>Total Personnel Services – Salaries</b>				<b>\$63,934.10</b>
<b>200 Personnel Services – Employee Benefits</b>				
220 Social Security Contributions				4,891.09
<b>Total Personnel Services – Employee Benefits</b>				<b>\$4,891.09</b>
<b>300 Purchased Professional and Technical Services</b>				
340 Technical Services				135,747.65
<b>Total Purchased Professional and Technical Services</b>				<b>\$135,747.65</b>
<b>500 Other Purchased Services</b>				
530 Communications				6,892.72
550 Printing and Binding				3,648.21
<b>Total Other Purchased Services</b>				<b>\$10,540.93</b>
<b>600 Supplies</b>				
610 General Supplies				267.09
<b>Total Supplies</b>				<b>\$267.09</b>
<b>Total 2330 Tax Assessment and Collection Services</b>				<b>\$215,380.86</b>



General Fund (10)

2340 Staff Relations and Negotiations Services

Elementary

Secondary

Federal

Total

300 Purchased Professional and Technical Services

330 Other Professional Services

7,056.50

**Total Purchased Professional and Technical Services**

**\$7,056.50**

**Total 2340 Staff Relations and Negotiations Services**

**\$7,056.50**

General Fund (10)

2350 Legal and Accounting Services

Elementary

Secondary

Federal

Total

300 Purchased Professional and Technical Services

330 Other Professional Services

42,394.00

**Total Purchased Professional and Technical Services**

**\$42,394.00**

**Total 2350 Legal and Accounting Services**

**\$42,394.00**

**General Fund (10)**

	<u>Elementary</u>	<u>Secondary</u>	<u>Federal</u>	<u>Total</u>
<b>2360 Office of the Superintendent / Executive Director Services</b>				
<b>100 Personnel Services – Salaries</b>				
100 Personnel Services – Salaries				289,701.00
<b>Total Personnel Services – Salaries</b>				<b>\$289,701.00</b>
<b>200 Personnel Services – Employee Benefits</b>				
210 Group Insurance – Contracted Provider				53,607.00
220 Social Security Contributions				21,281.28
230 PSERS Retirement Contributions				74,858.84
260 Workers' Compensation				1,448.20
290 Other Current Employee Benefits				8,859.36
<b>Total Personnel Services – Employee Benefits</b>				<b>\$160,054.68</b>
<b>300 Purchased Professional and Technical Services</b>				
330 Other Professional Services				50.00
<b>Total Purchased Professional and Technical Services</b>				<b>\$50.00</b>
<b>400 Purchased Property Services</b>				
440 Rentals				6,000.00
<b>Total Purchased Property Services</b>				<b>\$6,000.00</b>
<b>500 Other Purchased Services</b>				
530 Communications	246.25	203.61		449.86
549 Other Advertising/Public Relations				3,100.25
580 Travel				334.02
<b>Total Other Purchased Services</b>	<b>\$246.25</b>	<b>\$203.61</b>		<b>\$3,884.13</b>
<b>600 Supplies</b>				
610 General Supplies				489.78
640 Books and Periodicals				948.73
<b>Total Supplies</b>				<b>\$1,438.51</b>
<b>800 Other Objects</b>				
810 Dues and Fees				1,359.00
<b>Total Other Objects</b>				<b>\$1,359.00</b>
<b>Total 2360 Office of the Superintendent / Executive Director Services</b>	<b>\$246.25</b>	<b>\$203.61</b>		<b>\$462,487.32</b>

**General Fund (10)**

**2380 Office of the Principal Services**

	<u>Elementary</u>	<u>Secondary</u>	<u>Federal</u>	<u>Total</u>
<b>100 Personnel Services – Salaries</b>				
100 Personnel Services – Salaries	573,760.30	411,238.43		984,998.73
<b>Total Personnel Services – Salaries</b>	<b>\$573,760.30</b>	<b>\$411,238.43</b>		<b>\$984,998.73</b>
<b>200 Personnel Services – Employee Benefits</b>				
210 Group Insurance – Contracted Provider	114,768.18	124,795.97		239,564.15
220 Social Security Contributions	43,164.94	31,191.78		74,356.72
230 PSERS Retirement Contributions	147,665.44	105,423.87		253,089.31
240 Tuition Reimbursement	3,034.79	2,509.21		5,544.00
260 Workers' Compensation	2,842.11	2,056.34		4,898.45
290 Other Current Employee Benefits	12,592.96	10,797.95		23,390.91
<b>Total Personnel Services – Employee Benefits</b>	<b>\$324,068.42</b>	<b>\$276,775.12</b>		<b>\$600,843.54</b>
<b>400 Purchased Property Services</b>				
440 Rentals	945.71	16,175.98		17,121.69
<b>Total Purchased Property Services</b>	<b>\$945.71</b>	<b>\$16,175.98</b>		<b>\$17,121.69</b>
<b>500 Other Purchased Services</b>				
530 Communications	1,939.91	6,127.42		8,067.33
550 Printing and Binding		1,138.69		1,138.69
580 Travel	266.79			266.79
<b>Total Other Purchased Services</b>	<b>\$2,206.70</b>	<b>\$7,266.11</b>		<b>\$9,472.81</b>
<b>600 Supplies</b>				
610 General Supplies	3,637.75	9,210.18		12,847.93
640 Books and Periodicals	219.00			219.00
<b>Total Supplies</b>	<b>\$3,856.75</b>	<b>\$9,210.18</b>		<b>\$13,066.93</b>
<b>700 Property</b>				
750 Equipment – Original and Additional	723.85	1,344.87		2,068.72
760 Equipment – Replacement	738.19	1,371.53		2,109.72
<b>Total Property</b>	<b>\$1,462.04</b>	<b>\$2,716.40</b>		<b>\$4,178.44</b>
<b>800 Other Objects</b>				
810 Dues and Fees	2,171.90	2,813.74		4,985.64
<b>Total Other Objects</b>	<b>\$2,171.90</b>	<b>\$2,813.74</b>		<b>\$4,985.64</b>
<b>Total 2380 Office of the Principal Services</b>	<b>\$908,471.82</b>	<b>\$726,195.96</b>		<b>\$1,634,667.78</b>

**General Fund (10)**

	<u>Elementary</u>	<u>Secondary</u>	<u>Federal</u>	<u>Total</u>
<b>2400 Support Services – Pupil Health</b>				
<b>100 Personnel Services – Salaries</b>				
100 Personnel Services – Salaries				386,723.36
<b>Total Personnel Services – Salaries</b>				<b>\$386,723.36</b>
<b>200 Personnel Services – Employee Benefits</b>				
210 Group Insurance – Contracted Provider				98,761.09
220 Social Security Contributions				29,614.97
230 PSERS Retirement Contributions				100,759.26
260 Workers' Compensation				1,914.26
290 Other Current Employee Benefits				2,562.20
<b>Total Personnel Services – Employee Benefits</b>				<b>\$233,611.78</b>
<b>300 Purchased Professional and Technical Services</b>				
330 Other Professional Services			5,071.00	158,221.97
<b>Total Purchased Professional and Technical Services</b>			<b>\$5,071.00</b>	<b>\$158,221.97</b>
<b>400 Purchased Property Services</b>				
430 Repairs and Maintenance Services				450.00
<b>Total Purchased Property Services</b>				<b>\$450.00</b>
<b>500 Other Purchased Services</b>				
580 Travel				7.02
<b>Total Other Purchased Services</b>				<b>\$7.02</b>
<b>600 Supplies</b>				
610 General Supplies				7,117.20
<b>Total Supplies</b>				<b>\$7,117.20</b>
<b>700 Property</b>				
760 Equipment – Replacement				255.74
<b>Total Property</b>				<b>\$255.74</b>
<b>Total 2400 Support Services – Pupil Health</b>			<b>\$5,071.00</b>	<b>\$786,387.07</b>

**General Fund (10)**

**2420 Medical Services**

	<u>Elementary</u>	<u>Secondary</u>	<u>Federal</u>	<u>Total</u>
<b>100 Personnel Services – Salaries</b>				
100 Personnel Services – Salaries				386,723.36
<b>Total Personnel Services – Salaries</b>				<b>\$386,723.36</b>
<b>200 Personnel Services – Employee Benefits</b>				
210 Group Insurance – Contracted Provider				98,761.09
220 Social Security Contributions				29,614.97
230 PSERS Retirement Contributions				100,759.26
260 Workers' Compensation				1,914.26
290 Other Current Employee Benefits				2,562.20
<b>Total Personnel Services – Employee Benefits</b>				<b>\$233,611.78</b>
<b>300 Purchased Professional and Technical Services</b>				
330 Other Professional Services				67,809.50
<b>Total Purchased Professional and Technical Services</b>				<b>\$67,809.50</b>
<b>400 Purchased Property Services</b>				
430 Repairs and Maintenance Services				450.00
<b>Total Purchased Property Services</b>				<b>\$450.00</b>
<b>500 Other Purchased Services</b>				
580 Travel				7.02
<b>Total Other Purchased Services</b>				<b>\$7.02</b>
<b>600 Supplies</b>				
610 General Supplies				7,117.20
<b>Total Supplies</b>				<b>\$7,117.20</b>
<b>700 Property</b>				
760 Equipment – Replacement				255.74
<b>Total Property</b>				<b>\$255.74</b>
<b>Total 2420 Medical Services</b>				<b>\$695,974.60</b>

General Fund (10)

2490 Other Health Services

Elementary

Secondary

Federal

Total

300 Purchased Professional and Technical Services

330 Other Professional Services

5,071.00

90,412.47

**Total Purchased Professional and Technical Services**

**\$5,071.00**

**\$90,412.47**

**Total 2490 Other Health Services**

**\$5,071.00**

**\$90,412.47**

General Fund (10)

2500 Support Services – Business

Elementary

Secondary

Federal

Total

100 Personnel Services – Salaries

100 Personnel Services – Salaries

238,129.42

**Total Personnel Services – Salaries**

**\$238,129.42**

200 Personnel Services – Employee Benefits

210 Group Insurance – Contracted Provider

90,739.59

220 Social Security Contributions

17,612.20

230 PSERS Retirement Contributions

61,532.72

260 Workers' Compensation

1,190.64

290 Other Current Employee Benefits

7,172.48

**Total Personnel Services – Employee Benefits**

**\$178,247.63**

300 Purchased Professional and Technical Services

330 Other Professional Services

28,592.48

**Total Purchased Professional and Technical Services**

**\$28,592.48**

400 Purchased Property Services

440 Rentals

5,433.47

**Total Purchased Property Services**

**\$5,433.47**

500 Other Purchased Services

530 Communications

4,852.39

549 Other Advertising/Public Relations

1,864.10

550 Printing and Binding

(189.66)

580 Travel

232.39

**Total Other Purchased Services**

**\$6,759.22**

600 Supplies

610 General Supplies

20,960.80

640 Books and Periodicals

197.99

**Total Supplies**

**\$21,158.79**

800 Other Objects

810 Dues and Fees

5,655.15

**Total Other Objects**

**\$5,655.15**

**Total 2500 Support Services – Business**

**\$483,976.16**



General Fund (10)

2510 Fiscal Services

Elementary

Secondary

Federal

Total

100 Personnel Services – Salaries

100 Personnel Services – Salaries 238,129.42

**Total Personnel Services – Salaries \$238,129.42**

200 Personnel Services – Employee Benefits

210 Group Insurance – Contracted Provider 90,739.59

220 Social Security Contributions 17,612.20

230 PSERS Retirement Contributions 61,532.72

260 Workers' Compensation 1,190.64

290 Other Current Employee Benefits 7,172.48

**Total Personnel Services – Employee Benefits \$178,247.63**

300 Purchased Professional and Technical Services

330 Other Professional Services 28,592.48

**Total Purchased Professional and Technical Services \$28,592.48**

400 Purchased Property Services

440 Rentals 5,433.47

**Total Purchased Property Services \$5,433.47**

500 Other Purchased Services

530 Communications 4,852.39

549 Other Advertising/Public Relations 1,864.10

580 Travel 232.39

**Total Other Purchased Services \$6,948.88**

600 Supplies

610 General Supplies 20,960.80

640 Books and Periodicals 197.99

**Total Supplies \$21,158.79**

800 Other Objects

810 Dues and Fees 5,655.15

**Total Other Objects \$5,655.15**

**Total 2510 Fiscal Services \$484,165.82**

**General Fund (10)**

	<u>Elementary</u>	<u>Secondary</u>	<u>Federal</u>	<u>Total</u>
<b>2511 Supervision of Fiscal Services - Head of Component</b>				
<b>100 Personnel Services – Salaries</b>				
100 Personnel Services – Salaries				112,686.20
<b>Total Personnel Services – Salaries</b>				<b>\$112,686.20</b>
<b>200 Personnel Services – Employee Benefits</b>				
210 Group Insurance – Contracted Provider				51,448.21
220 Social Security Contributions				8,372.12
230 PSERS Retirement Contributions				29,118.08
260 Workers' Compensation				563.42
290 Other Current Employee Benefits				3,922.48
<b>Total Personnel Services – Employee Benefits</b>				<b>\$93,424.31</b>
<b>300 Purchased Professional and Technical Services</b>				
330 Other Professional Services				28,592.48
<b>Total Purchased Professional and Technical Services</b>				<b>\$28,592.48</b>
<b>400 Purchased Property Services</b>				
440 Rentals				5,433.47
<b>Total Purchased Property Services</b>				<b>\$5,433.47</b>
<b>500 Other Purchased Services</b>				
530 Communications				4,852.39
549 Other Advertising/Public Relations				1,864.10
580 Travel				232.39
<b>Total Other Purchased Services</b>				<b>\$6,948.88</b>
<b>600 Supplies</b>				
610 General Supplies				20,960.80
640 Books and Periodicals				197.99
<b>Total Supplies</b>				<b>\$21,158.79</b>
<b>800 Other Objects</b>				
810 Dues and Fees				5,655.15
<b>Total Other Objects</b>				<b>\$5,655.15</b>
<b>Total 2511 Supervision of Fiscal Services - Head of Component</b>				<b>\$273,899.28</b>

General Fund (10)

2513 Receiving and Disbursing Funds Services

Elementary

Secondary

Federal

Total

100 Personnel Services – Salaries

100 Personnel Services – Salaries

41,247.22

**Total Personnel Services – Salaries**

**\$41,247.22**

200 Personnel Services – Employee Benefits

210 Group Insurance – Contracted Provider

6,135.96

220 Social Security Contributions

3,017.49

230 PSERS Retirement Contributions

10,658.19

260 Workers' Compensation

206.28

290 Other Current Employee Benefits

650.00

**Total Personnel Services – Employee Benefits**

**\$20,667.92**

**Total 2513 Receiving and Disbursing Funds Services**

**\$61,915.14**

General Fund (10)

2514 Payroll Services

Elementary

Secondary

Federal

Total

**100 Personnel Services – Salaries**

100 Personnel Services – Salaries

30,950.00

**Total Personnel Services – Salaries**

**\$30,950.00**

**200 Personnel Services – Employee Benefits**

210 Group Insurance – Contracted Provider

17,487.84

220 Social Security Contributions

2,251.63

230 PSERS Retirement Contributions

7,997.56

260 Workers' Compensation

154.70

290 Other Current Employee Benefits

1,300.00

**Total Personnel Services – Employee Benefits**

**\$29,191.73**

**Total 2514 Payroll Services**

**\$60,141.73**

General Fund (10)

2515 Financial Accounting Services

Elementary

Secondary

Federal

Total

100 Personnel Services – Salaries

100 Personnel Services – Salaries

53,246.00

**Total Personnel Services – Salaries**

**\$53,246.00**

200 Personnel Services – Employee Benefits

210 Group Insurance – Contracted Provider

15,667.58

220 Social Security Contributions

3,970.96

230 PSERS Retirement Contributions

13,758.89

260 Workers' Compensation

266.24

290 Other Current Employee Benefits

1,300.00

**Total Personnel Services – Employee Benefits**

**\$34,963.67**

**Total 2515 Financial Accounting Services**

**\$88,209.67**

General Fund (10)

2540 Printing, Publishing and Duplicating Services

Elementary

Secondary

Federal

Total

500 Other Purchased Services

550 Printing and Binding

(189.66)

**Total Other Purchased Services**

**(\$189.66)**

**Total 2540 Printing, Publishing and Duplicating Services**

**(\$189.66)**

**General Fund (10)**

	<u>Elementary</u>	<u>Secondary</u>	<u>Federal</u>	<u>Total</u>
<b>2600 Operation and Maintenance of Plant Services</b>				
<b>100 Personnel Services – Salaries</b>				
100 Personnel Services – Salaries				1,466,867.66
<b>Total Personnel Services – Salaries</b>				<b>\$1,466,867.66</b>
<b>200 Personnel Services – Employee Benefits</b>				
210 Group Insurance – Contracted Provider				585,957.51
220 Social Security Contributions				111,425.65
230 PSERS Retirement Contributions				370,802.55
250 Unemployment Compensation				1,560.82
260 Workers' Compensation				7,330.51
290 Other Current Employee Benefits				5,924.80
<b>Total Personnel Services – Employee Benefits</b>				<b>\$1,083,001.84</b>
<b>300 Purchased Professional and Technical Services</b>				
330 Other Professional Services				24,900.00
<b>Total Purchased Professional and Technical Services</b>				<b>\$24,900.00</b>
<b>400 Purchased Property Services</b>				
410 Cleaning Services				22,483.11
420 Utility Services				499,335.18
430 Repairs and Maintenance Services				198,403.08
440 Rentals				1,129.62
490 Other Purchased Property Services				1,228.00
<b>Total Purchased Property Services</b>				<b>\$722,578.99</b>
<b>500 Other Purchased Services</b>				
523 General Property and Liability Insurance				117,786.50
530 Communications				24,276.72
580 Travel				1,267.11
<b>Total Other Purchased Services</b>				<b>\$143,330.33</b>
<b>600 Supplies</b>				
610 General Supplies	149,771.25	149,345.49		299,116.74
620 Energy				131,937.83
<b>Total Supplies</b>	<b>\$149,771.25</b>	<b>\$149,345.49</b>		<b>\$431,054.57</b>
<b>700 Property</b>				
750 Equipment – Original and Additional				10,375.81
760 Equipment – Replacement				8,543.82
<b>Total Property</b>				<b>\$18,919.63</b>
<b>800 Other Objects</b>				
810 Dues and Fees				1,992.69
<b>Total Other Objects</b>				<b>\$1,992.69</b>
<b>Total 2600 Operation and Maintenance of Plant Services</b>	<b>\$149,771.25</b>	<b>\$149,345.49</b>		<b>\$3,892,645.71</b>

General Fund (10)

	<u>Elementary</u>	<u>Secondary</u>	<u>Federal</u>	<u>Total</u>
<b>2610 Supervision of Operation and Maintenance of Plant Services</b>				
<b>100 Personnel Services – Salaries</b>				
100 Personnel Services – Salaries				162,055.54
<b>Total Personnel Services – Salaries</b>				<b>\$162,055.54</b>
<b>200 Personnel Services – Employee Benefits</b>				
210 Group Insurance – Contracted Provider				38,460.97
220 Social Security Contributions				12,225.58
230 PSERS Retirement Contributions				41,875.05
260 Workers' Compensation				810.42
290 Other Current Employee Benefits				4,624.80
<b>Total Personnel Services – Employee Benefits</b>				<b>\$97,996.82</b>
<b>Total 2610 Supervision of Operation and Maintenance of Plant Services</b>				<b>\$260,052.36</b>



General Fund (10)

	<u>Elementary</u>	<u>Secondary</u>	<u>Federal</u>	<u>Total</u>
<b>2611 Supervision of Operation and Maintenance of Plant Services – Head of Component</b>				
<b>100 Personnel Services – Salaries</b>				
100 Personnel Services – Salaries				162,055.54
<b>Total Personnel Services – Salaries</b>				<b>\$162,055.54</b>
<b>200 Personnel Services – Employee Benefits</b>				
210 Group Insurance – Contracted Provider				38,460.97
220 Social Security Contributions				12,225.58
230 PSERS Retirement Contributions				41,875.05
260 Workers' Compensation				810.42
290 Other Current Employee Benefits				4,624.80
<b>Total Personnel Services – Employee Benefits</b>				<b>\$97,996.82</b>
<b>Total 2611 Supervision of Operation and Maintenance of Plant Services – Head of Component</b>				<b>\$260,052.36</b>

**General Fund (10)**

	<u>Elementary</u>	<u>Secondary</u>	<u>Federal</u>	<u>Total</u>
<b>2620 Operation of Buildings Services</b>				
<b>100 Personnel Services – Salaries</b>				
100 Personnel Services – Salaries				1,268,772.81
<b>Total Personnel Services – Salaries</b>				<b>\$1,268,772.81</b>
<b>200 Personnel Services – Employee Benefits</b>				
210 Group Insurance – Contracted Provider				530,883.62
220 Social Security Contributions				96,389.27
230 PSERS Retirement Contributions				319,461.17
250 Unemployment Compensation				1,552.63
260 Workers' Compensation				6,336.16
<b>Total Personnel Services – Employee Benefits</b>				<b>\$954,622.85</b>
<b>300 Purchased Professional and Technical Services</b>				
330 Other Professional Services				24,900.00
<b>Total Purchased Professional and Technical Services</b>				<b>\$24,900.00</b>
<b>400 Purchased Property Services</b>				
410 Cleaning Services				22,483.11
420 Utility Services				499,335.18
430 Repairs and Maintenance Services				198,403.08
440 Rentals				1,129.62
490 Other Purchased Property Services				1,228.00
<b>Total Purchased Property Services</b>				<b>\$722,578.99</b>
<b>500 Other Purchased Services</b>				
523 General Property and Liability Insurance				117,786.50
530 Communications				24,276.72
580 Travel				1,267.11
<b>Total Other Purchased Services</b>				<b>\$143,330.33</b>
<b>600 Supplies</b>				
610 General Supplies	149,727.57	149,309.37		299,036.94
620 Energy				131,937.83
<b>Total Supplies</b>	<b>\$149,727.57</b>	<b>\$149,309.37</b>		<b>\$430,974.77</b>
<b>700 Property</b>				
750 Equipment – Original and Additional				10,375.81
760 Equipment – Replacement				8,543.82
<b>Total Property</b>				<b>\$18,919.63</b>
<b>800 Other Objects</b>				
810 Dues and Fees				1,992.69
<b>Total Other Objects</b>				<b>\$1,992.69</b>
<b>Total 2620 Operation of Buildings Services</b>	<b>\$149,727.57</b>	<b>\$149,309.37</b>		<b>\$3,566,092.07</b>

**General Fund (10)**

**2660 Safety and Security Services**

**100 Personnel Services – Salaries**

	<u>Elementary</u>	<u>Secondary</u>	<u>Federal</u>	<u>Total</u>
100 Personnel Services – Salaries				36,039.31
<b>Total Personnel Services – Salaries</b>				<b>\$36,039.31</b>
<b>200 Personnel Services – Employee Benefits</b>				
210 Group Insurance – Contracted Provider				16,612.92
220 Social Security Contributions				2,810.80
230 PSERS Retirement Contributions				9,466.33
250 Unemployment Compensation				8.19
260 Workers' Compensation				183.93
290 Other Current Employee Benefits				1,300.00
<b>Total Personnel Services – Employee Benefits</b>				<b>\$30,382.17</b>
<b>600 Supplies</b>				
610 General Supplies	43.68	36.12		79.80
<b>Total Supplies</b>	<b>\$43.68</b>	<b>\$36.12</b>		<b>\$79.80</b>
<b>Total 2660 Safety and Security Services</b>	<b>\$43.68</b>	<b>\$36.12</b>		<b>\$66,501.28</b>

**General Fund (10)**

	<u>Elementary</u>	<u>Secondary</u>	<u>Federal</u>	<u>Total</u>
<b>2700 Student Transportation Services</b>				
<b>100 Personnel Services – Salaries</b>				
100 Personnel Services – Salaries				105,684.46
<b>Total Personnel Services – Salaries</b>				<b>\$105,684.46</b>
<b>200 Personnel Services – Employee Benefits</b>				
210 Group Insurance – Contracted Provider				21,411.24
220 Social Security Contributions				7,942.74
230 PSERS Retirement Contributions				27,308.82
260 Workers' Compensation				528.58
290 Other Current Employee Benefits				4,156.28
<b>Total Personnel Services – Employee Benefits</b>				<b>\$61,347.66</b>
<b>500 Other Purchased Services</b>				
513 Contracted Carriers				1,449,766.65
516 Student Transportation Services From the IU				147,819.69
580 Travel				286.25
<b>Total Other Purchased Services</b>				<b>\$1,597,872.59</b>
<b>600 Supplies</b>				
610 General Supplies				1,305.39
<b>Total Supplies</b>				<b>\$1,305.39</b>
<b>800 Other Objects</b>				
810 Dues and Fees				222.00
<b>Total Other Objects</b>				<b>\$222.00</b>
<b>Total 2700 Student Transportation Services</b>				<b>\$1,766,432.10</b>

**General Fund (10)**

	<u>Elementary</u>	<u>Secondary</u>	<u>Federal</u>	<u>Total</u>
<b>2710 Supervision of Student Transportation Services</b>				
<b>100 Personnel Services – Salaries</b>				
100 Personnel Services – Salaries				105,684.46
<b>Total Personnel Services – Salaries</b>				<b>\$105,684.46</b>
<b>200 Personnel Services – Employee Benefits</b>				
210 Group Insurance – Contracted Provider				21,411.24
220 Social Security Contributions				7,942.74
230 PSERS Retirement Contributions				27,308.82
260 Workers' Compensation				528.58
290 Other Current Employee Benefits				4,156.28
<b>Total Personnel Services – Employee Benefits</b>				<b>\$61,347.66</b>
<b>500 Other Purchased Services</b>				
513 Contracted Carriers				1,336,429.98
516 Student Transportation Services From the IU				147,819.69
580 Travel				286.25
<b>Total Other Purchased Services</b>				<b>\$1,484,535.92</b>
<b>600 Supplies</b>				
610 General Supplies				1,305.39
<b>Total Supplies</b>				<b>\$1,305.39</b>
<b>800 Other Objects</b>				
810 Dues and Fees				222.00
<b>Total Other Objects</b>				<b>\$222.00</b>
<b>Total 2710 Supervision of Student Transportation Services</b>				<b>\$1,653,095.43</b>

**General Fund (10)**

	<u>Elementary</u>	<u>Secondary</u>	<u>Federal</u>	<u>Total</u>
<b>2711 Supervision of Student Transportation Services – Head of Component</b>				
<b>100 Personnel Services – Salaries</b>				
100 Personnel Services – Salaries				105,684.46
<b>Total Personnel Services – Salaries</b>				<b>\$105,684.46</b>
<b>200 Personnel Services – Employee Benefits</b>				
210 Group Insurance – Contracted Provider				21,411.24
220 Social Security Contributions				7,942.74
230 PSERS Retirement Contributions				27,308.82
260 Workers' Compensation				528.58
290 Other Current Employee Benefits				4,156.28
<b>Total Personnel Services – Employee Benefits</b>				<b>\$61,347.66</b>
<b>500 Other Purchased Services</b>				
513 Contracted Carriers				1,336,429.98
516 Student Transportation Services From the IU				147,819.69
580 Travel				286.25
<b>Total Other Purchased Services</b>				<b>\$1,484,535.92</b>
<b>600 Supplies</b>				
610 General Supplies				1,305.39
<b>Total Supplies</b>				<b>\$1,305.39</b>
<b>800 Other Objects</b>				
810 Dues and Fees				222.00
<b>Total Other Objects</b>				<b>\$222.00</b>
<b>Total 2711 Supervision of Student Transportation Services – Head of Component</b>				<b>\$1,653,095.43</b>

General Fund (10)

2750 Nonpublic Transportation

Elementary

Secondary

Federal

Total

500 Other Purchased Services

513 Contracted Carriers

113,336.67

**Total Other Purchased Services**

**\$113,336.67**

**Total 2750 Nonpublic Transportation**

**\$113,336.67**

**General Fund (10)**

	<u>Elementary</u>	<u>Secondary</u>	<u>Federal</u>	<u>Total</u>
<b>2800 Support Services – Central</b>				
<b>100 Personnel Services – Salaries</b>				
100 Personnel Services – Salaries				428,086.06
<b>Total Personnel Services – Salaries</b>				<b>\$428,086.06</b>
<b>200 Personnel Services – Employee Benefits</b>				
210 Group Insurance – Contracted Provider				83,819.29
220 Social Security Contributions				32,350.94
230 PSERS Retirement Contributions				109,433.06
260 Workers' Compensation				2,139.81
290 Other Current Employee Benefits				14,222.72
<b>Total Personnel Services – Employee Benefits</b>				<b>\$241,965.82</b>
<b>300 Purchased Professional and Technical Services</b>				
330 Other Professional Services				94,592.30
<b>Total Purchased Professional and Technical Services</b>				<b>\$94,592.30</b>
<b>500 Other Purchased Services</b>				
530 Communications				56,628.94
549 Other Advertising/Public Relations				4,097.04
550 Printing and Binding				2,164.55
580 Travel				18,118.92
<b>Total Other Purchased Services</b>				<b>\$81,009.45</b>
<b>600 Supplies</b>				
610 General Supplies				3,741.20
640 Books and Periodicals				39.00
<b>Total Supplies</b>				<b>\$3,780.20</b>
<b>700 Property</b>				
760 Equipment – Replacement				1,077.89
<b>Total Property</b>				<b>\$1,077.89</b>
<b>800 Other Objects</b>				
810 Dues and Fees				838.00
<b>Total Other Objects</b>				<b>\$838.00</b>
<b>Total 2800 Support Services – Central</b>				<b>\$851,349.72</b>





General Fund (10)

2820 Information Services

Elementary

Secondary

Federal

Total

500 Other Purchased Services

530 Communications

696.74

550 Printing and Binding

812.86

580 Travel

54.24

**Total Other Purchased Services**

**\$1,563.84**

**Total 2820 Information Services**

**\$1,563.84**

**General Fund (10)**

**2823 Public Information Services**

**500 Other Purchased Services**

530 Communications

550 Printing and Binding

580 Travel

**Total Other Purchased Services**

**Total 2823 Public Information Services**

Elementary

Secondary

Federal

Total

696.74

812.86

54.24

**\$1,563.84**

**\$1,563.84**

General Fund (10)

2830 Staff Services

Elementary

Secondary

Federal

Total

100 Personnel Services – Salaries

100 Personnel Services – Salaries

51,981.02

**Total Personnel Services – Salaries**

**\$51,981.02**

200 Personnel Services – Employee Benefits

210 Group Insurance – Contracted Provider

17,538.06

220 Social Security Contributions

3,880.74

230 PSERS Retirement Contributions

13,431.96

260 Workers' Compensation

259.90

290 Other Current Employee Benefits

1,300.00

**Total Personnel Services – Employee Benefits**

**\$36,410.66**

500 Other Purchased Services

549 Other Advertising/Public Relations

4,097.04

580 Travel

16,526.68

**Total Other Purchased Services**

**\$20,623.72**

800 Other Objects

810 Dues and Fees

400.00

**Total Other Objects**

**\$400.00**

**Total 2830 Staff Services**

**\$109,415.40**

General Fund (10)

2831 Supervision of Staff Services

Elementary

Secondary

Federal

Total

100 Personnel Services – Salaries

100 Personnel Services – Salaries

51,981.02

**Total Personnel Services – Salaries**

**\$51,981.02**

200 Personnel Services – Employee Benefits

210 Group Insurance – Contracted Provider

17,538.06

220 Social Security Contributions

3,880.74

230 PSERS Retirement Contributions

13,431.96

260 Workers' Compensation

259.90

290 Other Current Employee Benefits

1,300.00

**Total Personnel Services – Employee Benefits**

**\$36,410.66**

500 Other Purchased Services

549 Other Advertising/Public Relations

4,097.04

580 Travel

16,526.68

**Total Other Purchased Services**

**\$20,623.72**

800 Other Objects

810 Dues and Fees

400.00

**Total Other Objects**

**\$400.00**

**Total 2831 Supervision of Staff Services**

**\$109,415.40**

General Fund (10)

2840 Data Processing Services

Elementary

Secondary

Federal

Total

100 Personnel Services – Salaries

100 Personnel Services – Salaries

149,652.00

**Total Personnel Services – Salaries**

**\$149,652.00**

200 Personnel Services – Employee Benefits

210 Group Insurance – Contracted Provider

35,517.48

220 Social Security Contributions

11,300.78

230 PSERS Retirement Contributions

38,670.03

260 Workers' Compensation

748.28

290 Other Current Employee Benefits

5,903.24

**Total Personnel Services – Employee Benefits**

**\$92,139.81**

300 Purchased Professional and Technical Services

330 Other Professional Services

67,214.14

**Total Purchased Professional and Technical Services**

**\$67,214.14**

500 Other Purchased Services

530 Communications

37,522.65

550 Printing and Binding

1,351.69

580 Travel

91.80

**Total Other Purchased Services**

**\$38,966.14**

600 Supplies

610 General Supplies

3,801.20

640 Books and Periodicals

39.00

**Total Supplies**

**\$3,840.20**

700 Property

760 Equipment – Replacement

1,077.89

**Total Property**

**\$1,077.89**

800 Other Objects

810 Dues and Fees

438.00

**Total Other Objects**

**\$438.00**

**Total 2840 Data Processing Services**

**\$353,328.18**

General Fund (10)

2900 Other Support Services

Elementary

Secondary

Federal

Total

500 Other Purchased Services

595 IU Payments By Withholding

146,153.26

**Total Other Purchased Services**

**\$146,153.26**

**Total 2900 Other Support Services**

**\$146,153.26**

General Fund (10)

2910 Support Services Not Listed Elsewhere In the 2000 Series

Elementary

Secondary

Federal

Total

500 Other Purchased Services

595 IU Payments By Withholding

146,153.26

**Total Other Purchased Services**

**\$146,153.26**

**Total 2910 Support Services Not Listed Elsewhere In the 2000 Series**

**\$146,153.26**



**General Fund (10)**

**3000 Operation of Non-Instructional Services**

**Total**

**100 Personnel Services – Salaries**

100 Personnel Services – Salaries 507,835.40

**Total Personnel Services – Salaries \$507,835.40**

**200 Personnel Services – Employee Benefits**

210 Group Insurance – Contracted Provider 20,154.60

220 Social Security Contributions 39,058.12

230 PSERS Retirement Contributions 109,986.24

250 Unemployment Compensation 2,231.59

260 Workers’ Compensation 2,563.91

**Total Personnel Services – Employee Benefits \$173,994.46**

**300 Purchased Professional and Technical Services**

329 Professional Educational Services – Other 1,726.75

330 Other Professional Services 27,077.56

390 Other Purchased Professional and Technical Services 25,665.00

**Total Purchased Professional and Technical Services \$54,469.31**

**400 Purchased Property Services**

410 Cleaning Services 12,694.47

440 Rentals 18,880.00

**Total Purchased Property Services \$31,574.47**

**500 Other Purchased Services**

510 Student Transportation Services 84,985.99

520 Insurance – General 13,230.00

580 Travel 13,549.17

599 Other Miscellaneous Purchased Services 27,549.09

**Total Other Purchased Services \$139,314.25**

**600 Supplies**

610 General Supplies 96,074.61

640 Books and Periodicals 1,500.00

**Total Supplies \$97,574.61**

**800 Other Objects**

810 Dues and Fees 10,336.16

860 Grants To Municipal and Community Service Organizations 48,000.00

**Total Other Objects \$58,336.16**

**Total 3000 Operation of Non-Instructional Services \$1,063,098.66**

**General Fund (10)**

**3200 Student Activities**

	<u>Elementary</u>	<u>Secondary</u>	<u>Federal</u>	<u>Total</u>
<b>100 Personnel Services – Salaries</b>				
100 Personnel Services – Salaries				487,535.40
<b>Total Personnel Services – Salaries</b>				<b>\$487,535.40</b>
<b>200 Personnel Services – Employee Benefits</b>				
210 Group Insurance – Contracted Provider				20,154.60
220 Social Security Contributions				37,505.14
230 PSERS Retirement Contributions				104,740.74
250 Unemployment Compensation				2,231.59
260 Workers' Compensation				2,462.51
<b>Total Personnel Services – Employee Benefits</b>				<b>\$167,094.58</b>
<b>300 Purchased Professional and Technical Services</b>				
329 Professional Educational Services – Other				1,726.75
330 Other Professional Services				27,077.56
390 Other Purchased Professional and Technical Services				25,665.00
<b>Total Purchased Professional and Technical Services</b>				<b>\$54,469.31</b>
<b>400 Purchased Property Services</b>				
410 Cleaning Services				12,694.47
440 Rentals				18,880.00
<b>Total Purchased Property Services</b>				<b>\$31,574.47</b>
<b>500 Other Purchased Services</b>				
510 Student Transportation Services				84,985.99
520 Insurance – General				13,230.00
580 Travel				13,549.17
<b>Total Other Purchased Services</b>				<b>\$111,765.16</b>
<b>600 Supplies</b>				
610 General Supplies				95,692.87
640 Books and Periodicals				1,500.00
<b>Total Supplies</b>				<b>\$97,192.87</b>
<b>800 Other Objects</b>				
810 Dues and Fees				10,336.16
<b>Total Other Objects</b>				<b>\$10,336.16</b>
<b>Total 3200 Student Activities</b>				<b>\$959,967.95</b>

**General Fund (10)**

	<u>Elementary</u>	<u>Secondary</u>	<u>Federal</u>	<u>Total</u>
<b>3300 Community Services</b>				
<b>100 Personnel Services – Salaries</b>				
100 Personnel Services – Salaries				20,300.00
<b>Total Personnel Services – Salaries</b>				<b>\$20,300.00</b>
<b>200 Personnel Services – Employee Benefits</b>				
220 Social Security Contributions				1,552.98
230 PSERS Retirement Contributions				5,245.50
260 Workers’ Compensation				101.40
<b>Total Personnel Services – Employee Benefits</b>				<b>\$6,899.88</b>
<b>500 Other Purchased Services</b>				
599 Other Miscellaneous Purchased Services				27,549.09
<b>Total Other Purchased Services</b>				<b>\$27,549.09</b>
<b>600 Supplies</b>				
610 General Supplies			381.74	381.74
<b>Total Supplies</b>			<b>\$381.74</b>	<b>\$381.74</b>
<b>800 Other Objects</b>				
860 Grants To Municipal and Community Service Organizations				48,000.00
<b>Total Other Objects</b>				<b>\$48,000.00</b>
<b>Total 3300 Community Services</b>			<b>\$381.74</b>	<b>\$103,130.71</b>

**General Fund (10)**

**5000 Other Expenditures and Financing Uses**

**Total**

**800 Other Objects**

880 Refunds of Prior Years' Receipts

6,311.80

**Total Other Objects**

**\$6,311.80**

**900 Other Uses of Funds**

930 Fund Transfers

3,323,676.22

932 Capital Reserve Fund Transfers Applicable To Fund 32

239,474.78

**Total Other Uses of Funds**

**\$3,563,151.00**

**Total 5000 Other Expenditures and Financing Uses**

**\$3,569,462.80**

LEA : 128323703 Indiana Area SD

Printed 11/18/2016 9:54:39 AM

General Fund (10)

5100 Debt Service / Other Expenditures and Financing Uses	<u>Elementary</u>	<u>Secondary</u>	<u>Federal</u>	<u>Total</u>
800 <u>Other Objects</u>				
880 Refunds of Prior Years' Receipts				6,311.80
<b>Total Other Objects</b>				<b>\$6,311.80</b>
<b>Total 5100 Debt Service / Other Expenditures and Financing Uses</b>				<b>\$6,311.80</b>

General Fund (10)

5130 Refund of Prior Year Revenues / Receipts

Elementary

Secondary

Federal

Total

800 Other Objects

880 Refunds of Prior Years' Receipts

6,311.80

**Total Other Objects**

**\$6,311.80**

**Total 5130 Refund of Prior Year Revenues / Receipts**

**\$6,311.80**

General Fund (10)

5200 Interfund Transfers – Out

Elementary

Secondary

Federal

Total

900 Other Uses of Funds

930 Fund Transfers

3,323,676.22

932 Capital Reserve Fund Transfers Applicable To Fund 32

239,474.78

**Total Other Uses of Funds**

**\$3,563,151.00**

**Total 5200 Interfund Transfers – Out**

**\$3,563,151.00**

LEA : 128323703 Indiana Area SD

Printed 11/18/2016 9:54:39 AM

General Fund (10)

5230 Capital Projects Fund Transfers

Elementary

Secondary

Federal

Total

900 Other Uses of Funds

932 Capital Reserve Fund Transfers Applicable To Fund 32

239,474.78

**Total Other Uses of Funds**

**\$239,474.78**

**Total 5230 Capital Projects Fund Transfers**

**\$239,474.78**



General Fund (10)

5240 Debt Service Fund Transfers

Elementary

Secondary

Federal

Total

900 Other Uses of Funds

930 Fund Transfers

3,322,753.00

**Total Other Uses of Funds**

**\$3,322,753.00**

**Total 5240 Debt Service Fund Transfers**

**\$3,322,753.00**

General Fund (10)

5250 Enterprise Fund Transfers

Elementary

Secondary

Federal

Total

900 Other Uses of Funds

930 Fund Transfers

923.22

**Total Other Uses of Funds**

**\$923.22**

**Total 5250 Enterprise Fund Transfers**

**\$923.22**

LEA : 128323703 Indiana Area SD

Printed 11/18/2016 9:54:34 AM

**Capital Reserve Fund - § 1431 (32)**

**2000 Support Services**

**400 Purchased Property Services**

430 Repairs and Maintenance Services

Total

68,420.20

**Total Purchased Property Services**

**\$68,420.20**

**700 Property**

760 Equipment – Replacement

171,791.95

**Total Property**

**\$171,791.95**

**Total 2000 Support Services**

**\$240,212.15**

LEA : 128323703 Indiana Area SD

Printed 11/18/2016 9:54:34 AM

Capital Reserve Fund - § 1431 (32)

2100 Support Services – Students

700 Property  
760 Equipment – Replacement

Total Property

Total 2100 Support Services – Students

<u>Elementary</u>	<u>Secondary</u>	<u>Federal</u>	<u>Total</u>
	28,052.00		28,052.00
	<b>\$28,052.00</b>		<b>\$28,052.00</b>
	<b>\$28,052.00</b>		<b>\$28,052.00</b>

LEA : 128323703 Indiana Area SD

Printed 11/18/2016 9:54:34 AM

Capital Reserve Fund - § 1431 (32)

2190 Other Student Services

700 Property

760 Equipment – Replacement

Total Property

Total 2190 Other Student Services

	<u>Elementary</u>	<u>Secondary</u>	<u>Federal</u>	<u>Total</u>
		28,052.00		28,052.00
		<b>\$28,052.00</b>		<b>\$28,052.00</b>
		<b>\$28,052.00</b>		<b>\$28,052.00</b>

Capital Reserve Fund - § 1431 (32)

2200 Support Services – Instructional Staff

700 Property  
760 Equipment – Replacement

	<u>Elementary</u>	<u>Secondary</u>	<u>Federal</u>	<u>Total</u>
<b>Total Property</b>	<b>\$21,455.68</b>	<b>\$89,110.00</b>		<b>\$110,565.68</b>
<b>Total 2200 Support Services – Instructional Staff</b>	<b>\$21,455.68</b>	<b>\$89,110.00</b>		<b>\$110,565.68</b>

LEA : 128323703 Indiana Area SD

Printed 11/18/2016 9:54:34 AM

Capital Reserve Fund - § 1431 (32)

2220 Technology Support Services

700 Property  
760 Equipment – Replacement

Total Property

Total 2220 Technology Support Services

<u>Elementary</u>	<u>Secondary</u>	<u>Federal</u>	<u>Total</u>
21,455.68	89,110.00		110,565.68
<b>\$21,455.68</b>	<b>\$89,110.00</b>		<b>\$110,565.68</b>
<b>\$21,455.68</b>	<b>\$89,110.00</b>		<b>\$110,565.68</b>

Capital Reserve Fund - § 1431 (32)

	<u>Elementary</u>	<u>Secondary</u>	<u>Federal</u>	<u>Total</u>
<b>2600 Operation and Maintenance of Plant Services</b>				
<b>400 <u>Purchased Property Services</u></b>				
430 Repairs and Maintenance Services				68,420.20
<b>Total Purchased Property Services</b>				<b>\$68,420.20</b>
<b>700 <u>Property</u></b>				
760 Equipment – Replacement				33,174.27
<b>Total Property</b>				<b>\$33,174.27</b>
<b>Total 2600 Operation and Maintenance of Plant Services</b>				<b>\$101,594.47</b>



Capital Reserve Fund - § 1431 (32)

2620 Operation of Buildings Services

Elementary

Secondary

Federal

Total

400 Purchased Property Services

430 Repairs and Maintenance Services

68,420.20

**Total Purchased Property Services**

**\$68,420.20**

700 Property

760 Equipment – Replacement

33,174.27

**Total Property**

**\$33,174.27**

**Total 2620 Operation of Buildings Services**

**\$101,594.47**

**Capital Reserve Fund - § 1431 (32)**

**4000 Facilities Acquisition, Construction and Improvement Services**

**Total**

**400 Purchased Property Services**

430 Repairs and Maintenance Services

7,000.00

490 Other Purchased Property Services

9,353.89

**Total Purchased Property Services**

**\$16,353.89**

**Total 4000 Facilities Acquisition, Construction and Improvement Services**

**\$16,353.89**

LEA : 128323703 Indiana Area SD

Printed 11/18/2016 9:54:38 AM

Capital Reserve Fund - § 1431 (32)

4200 Existing Site Improvement Services

Elementary

Secondary

Federal

Total

400 Purchased Property Services

430 Repairs and Maintenance Services

7,000.00

**Total Purchased Property Services**

**\$7,000.00**

**Total 4200 Existing Site Improvement Services**

**\$7,000.00**

Capital Reserve Fund - § 1431 (32)

4600 Existing Building Improvement Services

Elementary

Secondary

Federal

Total

400 Purchased Property Services

490 Other Purchased Property Services

9,353.89

**Total Purchased Property Services**

**\$9,353.89**

**Total 4600 Existing Building Improvement Services**

**\$9,353.89**

**Other Capital Projects Fund (39)**

**4000 Facilities Acquisition, Construction and Improvement Services**

**Total**

**300 Purchased Professional and Technical Services**

330 Other Professional Services 264,737.14

**Total Purchased Professional and Technical Services \$264,737.14**

**400 Purchased Property Services**

430 Repairs and Maintenance Services 2,414,562.61

450 Construction Services 156,357.00

**Total Purchased Property Services \$2,570,919.61**

**700 Property**

760 Equipment – Replacement 48,991.75

**Total Property \$48,991.75**

**Total 4000 Facilities Acquisition, Construction and Improvement Services \$2,884,648.50**

Other Capital Projects Fund (39)

4400 Architecture and Engineering Services / Educational Specifications – Improvements

Elementary

Secondary

Federal

Total

300 Purchased Professional and Technical Services

330 Other Professional Services

264,737.14

**Total Purchased Professional and Technical Services**

**\$264,737.14**

**Total 4400 Architecture and Engineering Services / Educational Specifications – Improvements**

**\$264,737.14**

**Other Capital Projects Fund (39)**

**4600 Existing Building Improvement Services**

Elementary

Secondary

Federal

Total

**400 Purchased Property Services**

430 Repairs and Maintenance Services

2,414,562.61

450 Construction Services

156,357.00

**Total Purchased Property Services**

**\$2,570,919.61**

**700 Property**

760 Equipment – Replacement

48,991.75

**Total Property**

**\$48,991.75**

**Total 4600 Existing Building Improvement Services**

**\$2,619,911.36**

**Debt Service Fund (40)**

**2000 Support Services**

**800 Other Objects**

810 Dues and Fees

89,462.31

**Total Other Objects**

**\$89,462.31**

**Total 2000 Support Services**

**\$89,462.31**



LEA : 128323703 Indiana Area SD

Printed 11/18/2016 9:54:36 AM

Debt Service Fund (40)

2300 Support Services – Administration

Elementary

Secondary

Federal

Total

800 Other Objects

810 Dues and Fees

89,462.31

**Total Other Objects**

**\$89,462.31**

**Total 2300 Support Services – Administration**

**\$89,462.31**

Debt Service Fund (40)

2390 Other Administration Services

Elementary

Secondary

Federal

Total

800 Other Objects

810 Dues and Fees

89,462.31

**Total Other Objects**

**\$89,462.31**

**Total 2390 Other Administration Services**

**\$89,462.31**

**Debt Service Fund (40)**

**5000 Other Expenditures and Financing Uses**

**Total**

**800 Other Objects**

830 Interest 705,909.68

**Total Other Objects \$705,909.68**

**900 Other Uses of Funds**

910 Redemption of Principal 7,805,187.15

939 Other Fund Transfers 2,978,896.45

**Total Other Uses of Funds \$10,784,083.60**

**Total 5000 Other Expenditures and Financing Uses \$11,489,993.28**

Debt Service Fund (40)

5100 Debt Service / Other Expenditures and Financing Uses	<u>Elementary</u>	<u>Secondary</u>	<u>Federal</u>	<u>Total</u>
800 <u>Other Objects</u>				
830 Interest				705,909.68
<b>Total Other Objects</b>				<b>\$705,909.68</b>
900 <u>Other Uses of Funds</u>				
910 Redemption of Principal				7,805,187.15
<b>Total Other Uses of Funds</b>				<b>\$7,805,187.15</b>
<b>Total 5100 Debt Service / Other Expenditures and Financing Uses</b>				<b>\$8,511,096.83</b>

Debt Service Fund (40)

	<u>Elementary</u>	<u>Secondary</u>	<u>Federal</u>	<u>Total</u>
<b>5110 Debt Service</b>				
<b>800 Other Objects</b>				
830 Interest				632,565.93
<b>Total Other Objects</b>				<b>\$632,565.93</b>
<b>900 Other Uses of Funds</b>				
910 Redemption of Principal				2,690,187.15
<b>Total Other Uses of Funds</b>				<b>\$2,690,187.15</b>
<b>Total 5110 Debt Service</b>				<b>\$3,322,753.08</b>

Debt Service Fund (40)

5120 Debt Service – Refunded Bonds	<u>Elementary</u>	<u>Secondary</u>	<u>Federal</u>	<u>Total</u>
800 <u>Other Objects</u>				
830 Interest				73,343.75
<b>Total Other Objects</b>				<b>\$73,343.75</b>
900 <u>Other Uses of Funds</u>				
910 Redemption of Principal				5,115,000.00
<b>Total Other Uses of Funds</b>				<b>\$5,115,000.00</b>
<b>Total 5120 Debt Service – Refunded Bonds</b>				<b>\$5,188,343.75</b>

LEA : 128323703 Indiana Area SD

Printed 11/18/2016 9:54:40 AM

Debt Service Fund (40)

5200 Interfund Transfers – Out

Elementary

Secondary

Federal

Total

900 Other Uses of Funds

939 Other Fund Transfers

2,978,896.45

**Total Other Uses of Funds**

**\$2,978,896.45**

**Total 5200 Interfund Transfers – Out**

**\$2,978,896.45**

Debt Service Fund (40)

5230 Capital Projects Fund Transfers

Elementary

Secondary

Federal

Total

900 Other Uses of Funds

939 Other Fund Transfers

2,978,896.45

**Total Other Uses of Funds**

**\$2,978,896.45**

**Total 5230 Capital Projects Fund Transfers**

**\$2,978,896.45**



	<u>General Fund(10)</u>	<u>Public Purpose Trust(27)</u>	<u>Other Compt Approved (28)</u>	<u>Athletic / Activity(29)</u>	<u>Capital Reserve (690, 1850)(31)</u>
<b>1000 Instruction</b>					
1100 Regular Programs - Elementary / Secondary	26,401,060.13				
1200 Special Programs - Elementary / Secondary	5,795,594.25				
1300 Vocational Education	666,622.10				
1400 Other Instructional Programs - Elementary / Secondary	454,629.80				
1500 Nonpublic School Programs	5,629.56				
1800 Pre-Kindergarten	320,309.50				
<b>Total Instruction</b>	<b>\$33,643,845.34</b>				
<b>2000 Support Services</b>					
2100 Support Services - Students	1,527,580.65				
2200 Support Services - Instructional Staff	1,200,595.87				
2300 Support Services - Administration	2,441,377.25				
2400 Support Services - Pupil Health	786,387.07				
2500 Support Services - Business	483,976.16				
2600 Operation and Maintenance of Plant Services	3,892,645.71				
2700 Student Transportation Services	1,766,432.10				
2800 Support Services - Central	851,349.72				
2900 Other Support Services	146,153.26				
<b>Total Support Services</b>	<b>\$13,096,497.79</b>				
<b>3000 Operation of Non-Instructional Services</b>					
3200 Student Activities	959,967.95				
3300 Community Services	103,130.71				
<b>Total Operation of Non-Instructional Services</b>	<b>\$1,063,098.66</b>				
<b>4000 Facilities Acquisition, Construction and Improvement Services</b>					
4200 Existing Site Improvement Services					
4400 Architecture and Engineering Services / Educational Specifications - Improvements					
4600 Existing Building Improvement Services					
<b>Total Facilities Acquisition, Construction and Improvement Services</b>					
<b>5000 Other Expenditures and Financing Uses</b>					
5100 Debt Service / Other Expenditures and Financing Uses	6,311.80				
5200 Interfund Transfers - Out	3,563,151.00				
<b>Total Other Expenditures and Financing Uses</b>	<b>\$3,569,462.80</b>				
<b>TOTAL ACTUAL EXPENDITURES &amp; OTHER FINANCING USES</b>	<b>\$51,372,904.59</b>				

LEA : 128323703 Indiana Area SD

Printed 11/18/2016 9:54:41 AM

	<u>Capital Reserve (1431)(32)</u>	<u>Other Capital Projects Fund(39)</u>	<u>Debt Service(40)</u>	<u>Permanent(90)</u>	<u>Total</u>
<b>1000 Instruction</b>					
1100 Regular Programs - Elementary / Secondary					26,401,060.13
1200 Special Programs - Elementary / Secondary					5,795,594.25
1300 Vocational Education					666,622.10
1400 Other Instructional Programs - Elementary / Secondary					454,629.80
1500 Nonpublic School Programs					5,629.56
1800 Pre-Kindergarten					320,309.50
<b>Total Instruction</b>					<b>\$33,643,845.34</b>
<b>2000 Support Services</b>					
2100 Support Services - Students	28,052.00				1,555,632.65
2200 Support Services - Instructional Staff	110,565.68				1,311,161.55
2300 Support Services - Administration			89,462.31		2,530,839.56
2400 Support Services - Pupil Health					786,387.07
2500 Support Services - Business					483,976.16
2600 Operation and Maintenance of Plant Services	101,594.47				3,994,240.18
2700 Student Transportation Services					1,766,432.10
2800 Support Services - Central					851,349.72
2900 Other Support Services					146,153.26
<b>Total Support Services</b>	<b>\$240,212.15</b>		<b>\$89,462.31</b>		<b>\$13,426,172.25</b>
<b>3000 Operation of Non-Instructional Services</b>					
3200 Student Activities					959,967.95
3300 Community Services					103,130.71
<b>Total Operation of Non-Instructional Services</b>					<b>\$1,063,098.66</b>
<b>4000 Facilities Acquisition, Construction and Improvement Services</b>					
4200 Existing Site Improvement Services	7,000.00				7,000.00
4400 Architecture and Engineering Services / Educational Specifications - Improvements			264,737.14		264,737.14
4600 Existing Building Improvement Services	9,353.89	2,619,911.36			2,629,265.25
<b>Total Facilities Acquisition, Construction and Improvement Services</b>	<b>\$16,353.89</b>	<b>\$2,884,648.50</b>			<b>\$2,901,002.39</b>
<b>5000 Other Expenditures and Financing Uses</b>					
5100 Debt Service / Other Expenditures and Financing Uses			8,511,096.83		8,517,408.63
5200 Interfund Transfers - Out			2,978,896.45		6,542,047.45
<b>Total Other Expenditures and Financing Uses</b>			<b>\$11,489,993.28</b>		<b>\$15,059,456.08</b>
<b>TOTAL ACTUAL EXPENDITURES &amp; OTHER FINANCING USES</b>	<b>\$256,566.04</b>	<b>\$2,884,648.50</b>	<b>\$11,579,455.59</b>		<b>\$66,093,574.72</b>

LEA : 128323703 Indiana Area SD

Printed 11/18/2016 9:54:45 AM

**PSERS Salary Data (Salary Data should relate to the General Fund only)**

<b>Amount Description</b>	<b>Amount</b>
Total Salary Base for salaries subject to PSERS withholding	23,932,148.99
Total Federally Funded salaries subject to PSERS withholding	316,060.83
	<hr/>

**Title I Expenditure Data**

<b>Amount Description</b>	<b>Amount</b>
Expenditures Funded with Current Title I Funds	293,841.21
Expenditures Funded with Carry over Title I Funds	
<b>Total Title I Expenditure Data</b>	<hr/> <b>\$293,841.21</b> <hr/>

**Title I ARRA Amount**

<b>Amount Description</b>	<b>Amount</b>
Portion of Total Title I Expenditures funded with ARRA Title I	<hr/>

**Benefits for Staff Relative to Collective Bargaining Agreements**

	<b>OBJECT</b>	<b>COVERED</b>	<b>NOT COVERED</b>	<b>TOTAL</b>
<b>10 General Fund</b>	<b>No Self Insurance data to report</b>			
	211 Medical Insurance	5,130,846.07	613,895.21	5,744,741.28
	212 Dental Insurance	233,473.61	36,584.90	270,058.51
	215 Eye Care Insurance	56,326.00	10,160.93	66,486.93
	216 Prescription Insurance			
	271 Self-Insurance Medical Benefits			
	272 Self-Insurance Dental Benefits			
	275 Self-Insurance Eye Care Benefits			
	276 Self-Insurance Prescription Benefits			
	<b>FUND TOTAL</b>	<b>\$5,420,645.68</b>	<b>\$660,641.04</b>	<b>\$6,081,286.72</b>
<b>50 Enterprise Fund</b>	<b>No Self Insurance data to report</b>			
	211 Medical Insurance	90,212.19		90,212.19
	212 Dental Insurance	5,141.44		5,141.44
	215 Eye Care Insurance	1,103.30		1,103.30
	216 Prescription Insurance			
	271 Self-Insurance Medical Benefits			
	272 Self-Insurance Dental Benefits			
	275 Self-Insurance Eye Care Benefits			
	276 Self-Insurance Prescription Benefits			
	<b>FUND TOTAL</b>	<b>\$96,456.93</b>		<b>\$96,456.93</b>
<b>60 Internal Service Fund</b>	<b>No Self Insurance data to report</b>			
	211 Medical Insurance			
	212 Dental Insurance			
	215 Eye Care Insurance			
	216 Prescription Insurance			
	271 Self-Insurance Medical Benefits			
	272 Self-Insurance Dental Benefits			
	275 Self-Insurance Eye Care Benefits			
	276 Self-Insurance Prescription Benefits			
	<b>FUND TOTAL</b>			
<b>Total of All Funds</b>		<b>\$5,517,102.61</b>	<b>\$660,641.04</b>	<b>\$6,177,743.65</b>

LEA : 128323703 Indiana Area SD

Printed 11/18/2016 9:54:47 AM

Function	Special Education (Prior Year)	Nonspecial Education (Prior Year)	Total (Prior Year)	Special Education (Current Year)	Nonspecial Education (Current Year)	Total (Current Year)
2120 Guidance Services	135,406.85	999,942.70	1,135,349.55	143,461.63	1,059,059.80	1,202,521.43
2140 Psychological Services	31,987.43	236,218.46	268,205.89	28,842.35	212,919.50	241,761.85
2150 Speech Pathology and Audiology Services						
2160 Social Work Services						
2260 Instruction and Curriculum Development Services	210,793.39	226,546.80	437,340.19	222,517.24	203,130.31	425,647.55
2350 Legal and Accounting Services	2,574.50	36,986.50	39,561.00	8,901.00	33,493.00	42,394.00
2420 Medical Services	79,639.96	588,119.36	667,759.32	83,030.24	612,944.36	695,974.60
2440 Nursing Services						
2700 Student Transportation Services	248,309.85	1,416,702.82	1,665,012.67	327,400.11	1,325,695.32	1,653,095.43
<b>Total</b>	<b>\$708,711.98</b>	<b>\$3,504,516.64</b>	<b>\$4,213,228.62</b>	<b>\$814,152.57</b>	<b>\$3,447,242.29</b>	<b>\$4,261,394.86</b>

(PRINCIPAL AMOUNTS ONLY)

**ALL GOVERNMENTAL FUND TYPES**

	Short-Term Borrowing	General Obligation Bonds/Notes	Authority Building Obligations	Other Long-Term Debt	Other Post-Employment Benefits (OPEB)	Compensated Absences	Net Pension Liability	Total
1. Debt at Beginning of Fiscal Year		30,861,000.00	1,325,213.00		373,061.00	765,177.00	75,085,000.00	108,409,451.00
2. Additional Debt Incurred During Year		8,249,000.00					4,485,000.00	12,734,000.00
3. Retirements and Repayments		7,683,000.00	122,187.00		88,427.00	42,036.00		7,935,650.00
4. Debt at End of Fiscal Year		31,427,000.00	1,203,026.00		284,634.00	723,141.00	79,570,000.00	113,207,801.00
5. Accreted Interest at End Of Fiscal Year								
6. Total Debt and Accreted Interest		31,427,000.00	1,203,026.00		284,634.00	723,141.00	79,570,000.00	113,207,801.00
7. Current Portion P&I - Due within 1 year		3,305,328.98	147,415.00					3,452,743.98
8. Interest Paid during current fiscal year		604,142.33	28,423.59					632,565.92

(PRINCIPAL AMOUNTS ONLY)

**ALL PROPRIETARY FUND TYPES**

- 1. Debt at Beginning of Fiscal Year
- 2. Additional Debt Incurred During Year
- 3. Retirements and Repayments
- 4. Debt at End of Fiscal Year
- 5. Accreted Interest at End Of Fiscal Year
- 6. Total Debt and Accreted Interest
- 7. Current Portion P&I - Due within 1 year
- 8. Interest Paid during current fiscal year

**Total Principal and Interest Payments Made by Your School - All Funds**

Function	Fund		Principal (910)	Principal (920)	Interest (830)	Total (Principal +Interest)	Misc Other Uses (990)
5110	10	General Fund					
5110	20	Special Revenue Funds					
5110	30	Capital Projects Funds					
5110	40	Debt Service Fund	2,690,187.15		632,565.93	3,322,753.08	
5110	90	Permanent Fund					
5120	10	General Fund					
5120	20	Special Revenue Funds					
5120	30	Capital Projects Funds					
5120	40	Debt Service Fund	5,115,000.00		73,343.75	5,188,343.75	
<b>Total Debt Payments - Governmental Funds</b>			<b>\$7,805,187.15</b>		<b>\$705,909.68</b>	<b>\$8,511,096.83</b>	

Function	Fund		Principal (910)	Principal (920)	Interest (830)	Total (Principal +Interest)
5110	50	Enterprise Fund				
5110	60	Internal Service Fund				
5120	50	Enterprise Fund				
5120	60	Internal Service Fund				
<b>Total Debt Payments - Proprietary Funds</b>						

**Bond Details**  
**Governmental Funds**

Debt Category	Debt Issue Date (MM/YYYY)	Principal Amounts Only				Current Portion Due Within One Year (Principal and Interest)	Interest Paid During Fiscal Year
		Debt at Beginning of Fiscal Year	Additions	Reductions / Repayments	Debt at End of Fiscal Year		
Authority Building Obligations – CIB	02/2012	1,325,213.00		122,187.00	1,203,026.00	147,415.00	28,423.59
General Obligation Bonds/Notes – CIB	08/2010	5,115,000.00		5,115,000.00			
General Obligation Bonds/Notes – CIB	08/2012	9,940,000.00		20,000.00	9,920,000.00	276,937.50	252,220.00
General Obligation Bonds/Notes – CIB	04/2013	6,915,000.00		5,000.00	6,910,000.00	169,959.38	165,028.13
General Obligation Bonds/Notes – CIB	03/2014	8,891,000.00		2,543,000.00	6,348,000.00	2,653,377.75	111,512.25
General Obligation Bonds/Notes – CIB	08/2016		5,249,000.00		5,249,000.00	133,803.46	37,651.95
General Obligation Bonds/Notes – CIB	08/2016		3,000,000.00		3,000,000.00	71,250.89	37,730.00
Other Post-Employment Benefits (OPEB)		373,061.00		88,427.00	284,634.00		
Compensated Absences		765,177.00		42,036.00	723,141.00		
Net Pension Liability		75,085,000.00	4,485,000.00		79,570,000.00		
<b>Totals for Debt Entered:</b>		<b>\$108,409,451.00</b>	<b>\$12,734,000.00</b>	<b>\$7,935,650.00</b>	<b>\$113,207,801.00</b>	<b>\$3,452,743.98</b>	<b>\$632,565.92</b>



**General Fund (10)**

**Section 1: Tuition/Purchased Services as Reported within Expenditure Detail**

	<b>Amount</b>
Tuition Reported in General Fund Expenditures 1000-560	2,199,507.41
Purchased Services in General Fund Expenditures 1000-594 and 1000-597	

<b>Section 1 Total</b>	<b>\$2,199,507.41</b>
------------------------	-----------------------

**Section 2: Tuition Paid to Institution Types During Fiscal Year**

	<b>Tuition Paid For Nonspecial Education</b>	<b>Tuition Paid For Special Education</b>	<b>Total</b>
1 1306 Institutions			
2 Institutionalized Children's Programs			
3 Juveniles Incarcerated in Adult Facilities			
4 Residential Treatment Facilities			
5 Other Local Education Agencies	29,149.65	138,618.40	167,768.05
6 Brick and Mortar Charter Schools			
7 Cyber Charter Schools	574,261.54	242,087.89	816,349.43
8 Career and Technology Centers	666,622.10		666,622.10
9 Approved Private Schools	79,392.45	469,375.38	548,767.83
10 PA Chartered Schools for the Deaf and Blind			
11 Private Residential Rehabilitative Institutions			
12 Juvenile Detention Centers			
13 Special Program Jointures			
14 Other Tuition Not Included Elsewhere In This Section			
<b>Section 2 Total</b>	<b>\$1,349,425.74</b>	<b>\$850,081.67</b>	<b>\$2,199,507.41</b>

LEA : 128323703 Indiana Area SD

Printed 11/18/2016 9:54:49 AM

**Food Service / Cafeteria Operations Fund (51)**

**3000 Operation of Non-Instructional Services**

**Total**

**100 Personnel Services – Salaries**

100 Personnel Services – Salaries 144,602.89

**Total Personnel Services – Salaries \$144,602.89**

**200 Personnel Services – Employee Benefits**

210 Group Insurance – Contracted Provider 96,849.09

220 Social Security Contributions 11,032.87

230 PSERS Retirement Contributions 36,238.85

250 Unemployment Compensation 191.82

260 Workers’ Compensation 657.76

290 Other Current Employee Benefits 325.00

**Total Personnel Services – Employee Benefits \$145,295.39**

**500 Other Purchased Services**

570 Food Service Management 893,434.22

**Total Other Purchased Services \$893,434.22**

**600 Supplies**

610 General Supplies 2,388.63

630 Food 623.68

**Total Supplies \$3,012.31**

**700 Property**

740 Depreciation 12,180.29

**Total Property \$12,180.29**

**800 Other Objects**

810 Dues and Fees 4,396.90

**Total Other Objects \$4,396.90**

**Total 3000 Operation of Non-Instructional Services \$1,202,922.00**

Food Service / Cafeteria Operations Fund (51)

	<u>Elementary</u>	<u>Secondary</u>	<u>Federal</u>	<u>Total</u>
<b>3100 Food Services</b>				
<b>100 Personnel Services – Salaries</b>				
100 Personnel Services – Salaries				144,602.89
<b>Total Personnel Services – Salaries</b>				<b>\$144,602.89</b>
<b>200 Personnel Services – Employee Benefits</b>				
210 Group Insurance – Contracted Provider				96,849.09
220 Social Security Contributions				11,032.87
230 PSERS Retirement Contributions				36,238.85
250 Unemployment Compensation				191.82
260 Workers' Compensation				657.76
290 Other Current Employee Benefits				325.00
<b>Total Personnel Services – Employee Benefits</b>				<b>\$145,295.39</b>
<b>500 Other Purchased Services</b>				
570 Food Service Management				893,434.22
<b>Total Other Purchased Services</b>				<b>\$893,434.22</b>
<b>600 Supplies</b>				
610 General Supplies				2,388.63
630 Food				623.68
<b>Total Supplies</b>				<b>\$3,012.31</b>
<b>700 Property</b>				
740 Depreciation				12,180.29
<b>Total Property</b>				<b>\$12,180.29</b>
<b>800 Other Objects</b>				
810 Dues and Fees				4,396.90
<b>Total Other Objects</b>				<b>\$4,396.90</b>
<b>Total 3100 Food Services</b>				<b>\$1,202,922.00</b>

**Other Enterprise Funds (58)**

**3000 Operation of Non-Instructional Services**

**Total**

**600 Supplies**

610 General Supplies

53.48

**Total Supplies**

**\$53.48**

**Total 3000 Operation of Non-Instructional Services**

**\$53.48**

LEA : 128323703 Indiana Area SD

Printed 11/18/2016 9:54:50 AM

**Other Enterprise Funds (58)**

**3100 Food Services**

**600 Supplies**  
610 General Supplies

Elementary

Secondary

Federal

Total

<b>Total Supplies</b>				<b>53.48</b>
<b>Total 3100 Food Services</b>				<b>\$53.48</b>

	<u>Food Service(51)</u>	<u>Child Care Operations(52)</u>	<u>Other Enterprise(58)</u>	<u>Internal Service(60)</u>	<u>Total</u>
<b>3000 <u>Operation of Non-Instructional Services</u></b>					
3100 Food Services	1,202,922.00		53.48		1,202,975.48
<b>Total Operation of Non-Instructional Services</b>	<b>\$1,202,922.00</b>		<b>\$53.48</b>		<b>\$1,202,975.48</b>
<b>TOTAL ACTUAL EXPENDITURES &amp; OTHER FINANCING USES</b>	<b>\$1,202,922.00</b>		<b>\$53.48</b>		<b>\$1,202,975.48</b>