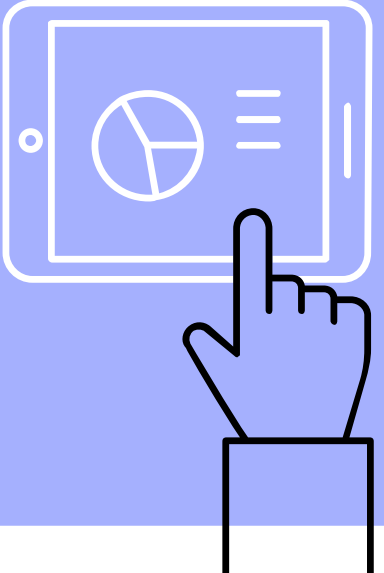
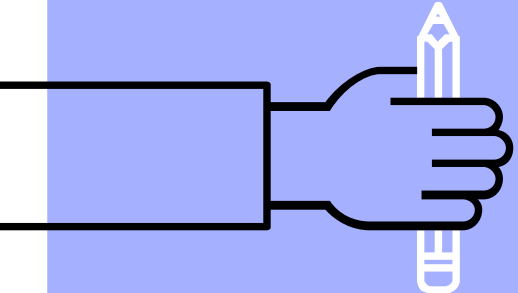


Duluth High School Dual Enrollment

October 30th, 2018



Information
And
Procedures

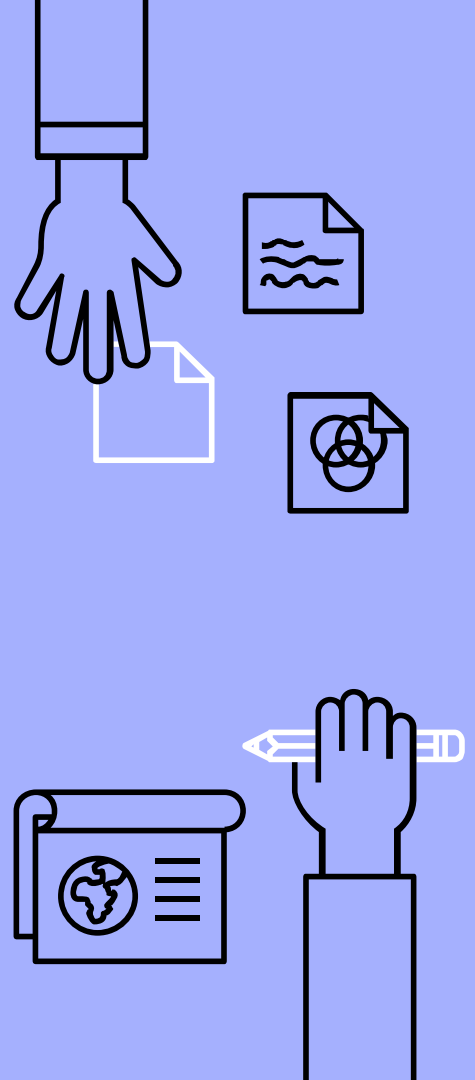
Who's Who?



Dr. Brian Fenner
Last Names A- Li



Mrs. Karen Beach
Last Names Lh-Z

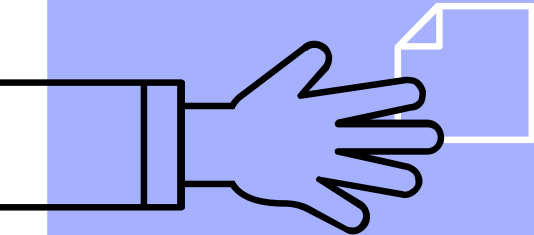
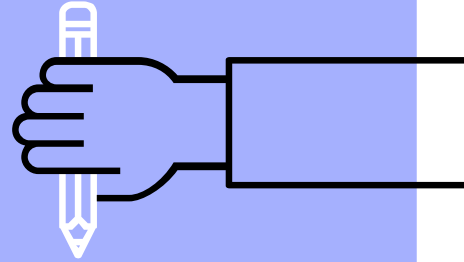


WHAT IS DUAL ENROLLMENT?

- ▶ The Dual Enrollment program is an opportunity for qualified high school students to earn college credits. The student is “jointly” enrolled in high school and in college. The student can be a full time or part time college student.
- ▶ The student earns college credits as well as high school credits needed for graduation.



Dual Enrollment Video

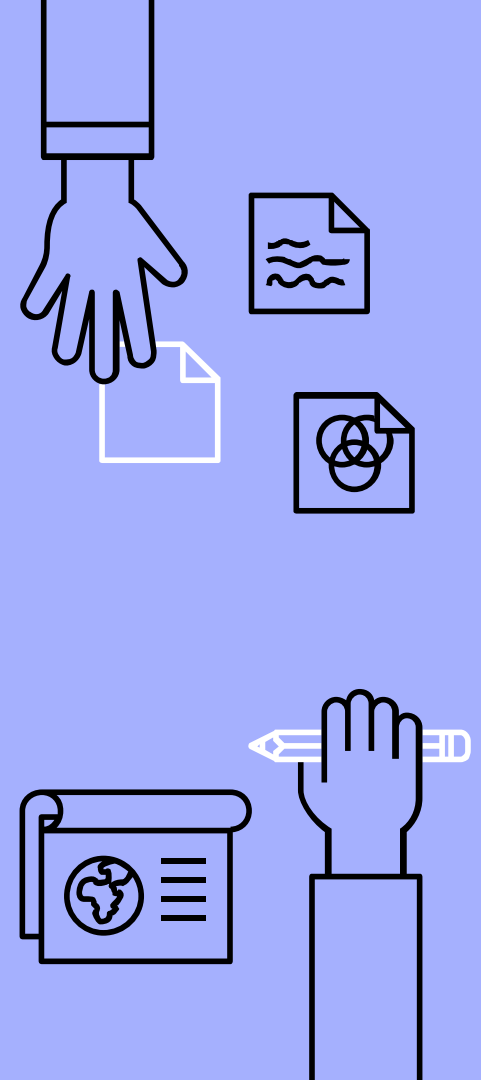


http://publish.gwinnett.k12.ga.us/gcps/home/gcps_tv/videos/news/focus/5293476857001

HOW DOES GRADING WORK?

- ▶ If colleges provide the high school with letter grades, the high school will transcribe the letter grade to the midpoint of the grading scale.
A = 95 B = 85 C = 77
D = 72 F = 55
- ▶ If a student withdraws from a course, this *could* result in an F on the high school transcript.

- ▶ If the student fails a class, it could jeopardize graduation!
- ▶ No points are added to the final grade (exception – 10 pts. are added to Georgia Tech –Calculus II).
- ▶ All DE classes are included on the high school transcript.



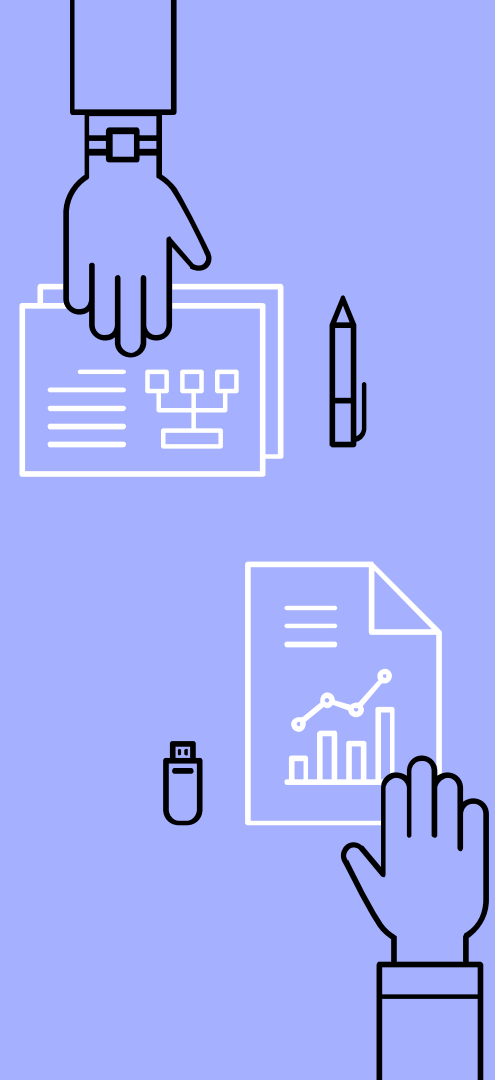
WHAT ABOUT TRANSFER CREDIT?

- ▶ It is the student's responsibility to talk with colleges regarding their policies on accepting transfer credit.
- ▶ Most credits transfer, even if some are used for elective credit.



GRADE CONVERSION

- ▶ 1 - 2 semester hour college classes = .5 HS credit.
- ▶ 3 - 5 semester hour college classes = 1.0 HS credit.
- ▶ Note: Science labs will receive .5 HS credit and will count toward elective credit. They will not count toward fourth science requirement.
- ▶ Note - If students complete High School graduation requirements early, they will no longer be able to participate in DE or attend High School.



WHAT ARE THE PROS AND CONS?

Pros

- ▶ Students get a **free** head start on college!

Cons

- ▶ Students must keep up with important Junior/Senior High School information.
- ▶ Many colleges prefer a different curriculum path (i.e. AP classes).
- ▶ Colleges will not communicate with parents of DE students.
- ▶ Classes with adults.



BE AWARE!!!

- ▶ A student must meet the entrance requirements of the college.
- ▶ It is the student's responsibility to register for the correct classes as advised by their high school counselor.
- ▶ The student is responsible for ALL interaction with the college. The college will rarely speak with a parent or the DE Coordinator regarding the student.
- ▶ Students must have all schedule changes approved by the high school counselor.
- ▶ Holidays such as Spring Break may be different from the Gwinnett County holidays.
- ▶ 5th year Seniors cannot participate.



More Helpful Information

- ▶ All students attending eligible public or private high schools or a home student program
- ▶ Advisement form must be signed by student and parent
- ▶ Eligible for summer study
- ▶ DE does not count against HOPE cap
- ▶ Can be denied participation for violation of secondary or postsecondary rules.
- ▶ Starting next year, some schools will accept PSAT score for entry.
- ▶ Online classes are offered.



WHERE CAN I ATTEND?

- ▶ A student may apply to attend any participating public college, private college, or technical college in Georgia.



School Options

School	Website	Minimum GPA	SAT Minimums	DHS Document Deadline	College Application Deadline
Georgia Gwinnett College	www.ggc.edu/admissions/admissions-requirements/dual-enrollment/index.html	3.0 <u>core</u> GPA	SAT— 26 Reading, 500 Math ACT—21 English, 19 Math, 20 Comp	Summer: March 1st Fall: April 15th	April 3 rd – summer May 1 st - fall
Georgia State University Perimeter College	http://perimeter.gsu.edu/admissions/apply/dual-enrollment/	3.0 <u>core</u> GPA	SAT—26 Reading, 26.5 Math ACT—20 English and 21 Math		April 1 st – summer May 1 st - fall
Georgia State University	http://admissions.gsu.edu/how-do-i-apply/high-school-students/dual-enrollment-programs/dual-enrollment/	3.0 <u>core</u> GPA	SAT— 29 Reading, 28 Math ACT – min 23 English and 23 Math		May 1 st – summer/fall
Gwinnett Tech	http://www.gwinnettech.edu/dualenrollment/	None	SAT—min 480 CR & 440 Math ACT – min 20 English, 19 Math, 17 Reading (COMPASS/Accuplacer also accepted)		See Website

Duluth High School Policies and Procedures

The following steps should be followed if you are planning to participate in the DE Program:

1. Attend a Parent/Student Information Meeting and participate in an Advisement session with your counselor.
2. Complete the DE Participation Agreement and DHS DE contract by April 15th (March 1st – Summer)
3. Apply to and be accepted by the college/university of your choice. You are responsible for following the college's application procedures and meeting all deadlines.

Procedures Continued

4. After receiving your college acceptance, meet with your high school DE coordinator to submit a copy of your college schedule and adjust your DHS classes.
5. Complete Part I of the [on-line DE funding application](#) through Gafutures.org. Email your high school DE coordinator when you have finished this step.
6. At the end of the semester, provide your high school DE coordinator with an official copy of your college transcript.

NOTE: A Participation Agreement and Steps 4-6 must be completed every semester.

SAT/ACT @ Duluth

SAT

TEST DATE:

August 25th
November 3rd
March 9th
May 4th
June 1st

REGISTER BY:

July 27th
October 5th
February 8th
April 5th
May 3rd

[REGISTER AT WWW.COLLEGEBOARD.COM](http://WWW.COLLEGEBOARD.COM)

ACT

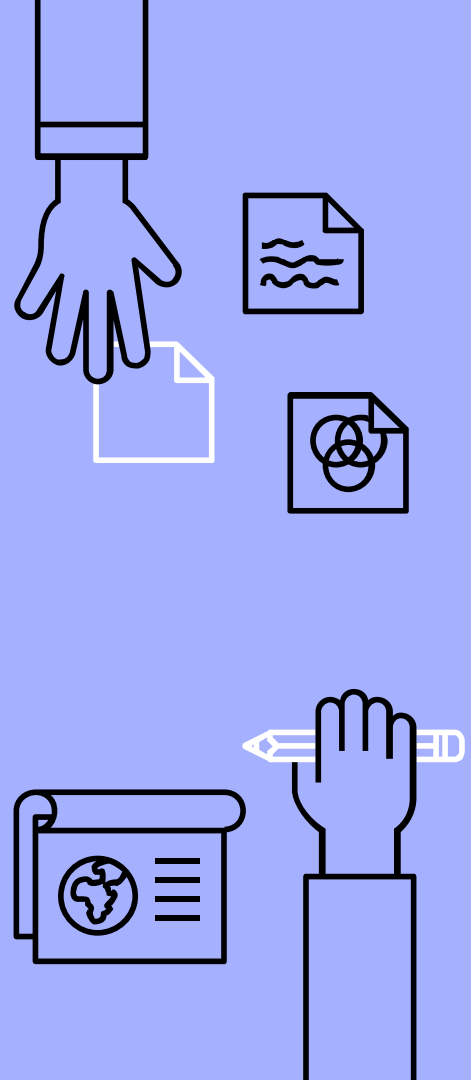
TEST DATE:

September 8th
October 27th
December 8th
February 9th
April 13th

REGISTER BY:

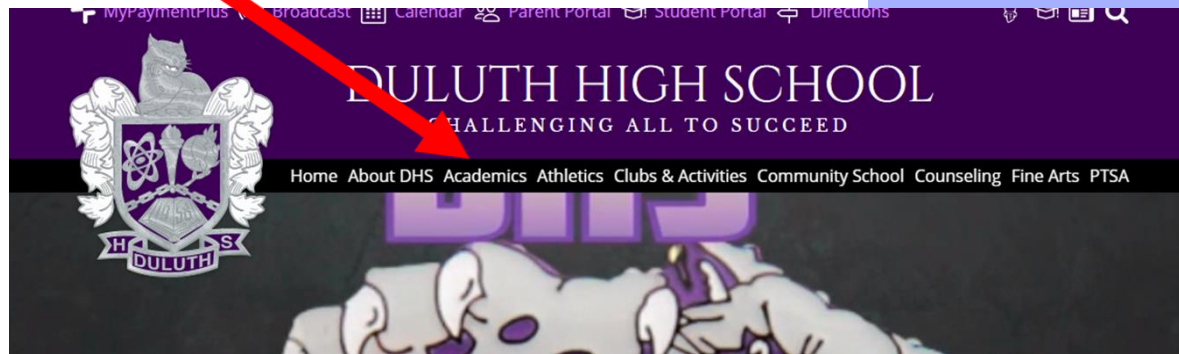
August 10th
September 28th
November 2nd
January 11th
March 8th

[REGISTER AT WWW.ACTSTUDENT.ORG](http://WWW.ACTSTUDENT.ORG)



“

Stay Connected!!

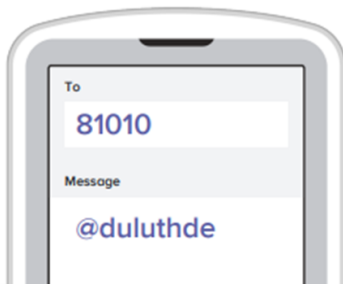


B If you don't have a smartphone, get text notifications.

Text the message @duluthde to the number 81010.

If you're having trouble with 81010, try texting @duluthde to (770) 400-9115.

* Standard text message rates apply.



THANKS!

Any questions?

Brian Fenner -

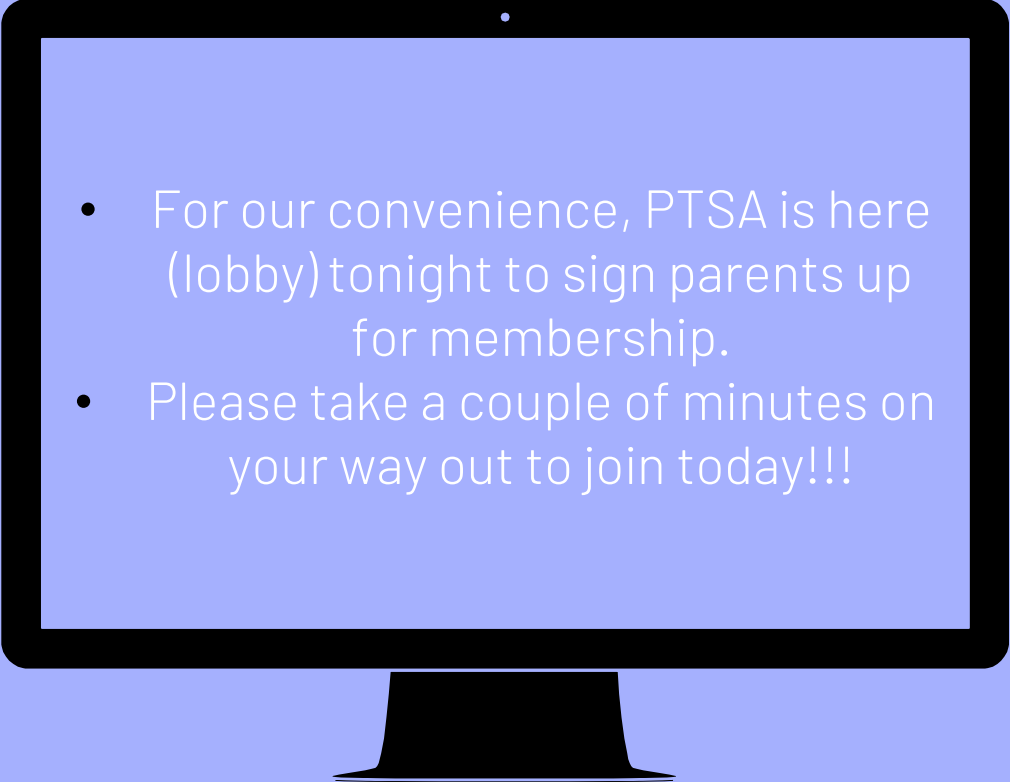
Brian_Fenner@gwinnett.k12.ga.us

Karen Beach -

Karen_Beach@gwinnett.k12.ga.us



GET MORE
INVOLVED!!!

- 
- For our convenience, PTSA is here (lobby) tonight to sign parents up for membership.
 - Please take a couple of minutes on your way out to join today!!!