

LEA Name : Tuscarora SD
Address : 100 W Seminary St
Mercersburg , PA 17236

County : Franklin
AUN Number : 112286003
LEA Type : SD

Annual Financial Report Accuracy Certification Statement

For Fiscal Year Ending

6/30/2018

Pennsylvania Department of Education


&

Office of Comptroller Operations

PDE-2056: Intermediate Unit

PDE-2057: School District, AVTS/CTC, Charter School,
and Special Program Jointure

CERTIFICATION: By signing this page I agree that the electronic data submitted is a complete and accurate statement of the financial operations and status of the local education agency for the fiscal year. It has been prepared in accordance with generally accepted accounting principles and established Commonwealth of PA reporting guidelines.



Chief School Administrator Signature



Board Secretary Signature

10/22/18

Date

10/22/18

Date

Marcia Stokes

Contact Person

marcia.stokes@tus.k12.pa.us

Contact Person E-mail Address

(717)328-3127

Contact Person Telephone Number

Ext :2805

Contact Person Fax Number

Annual Financial Report Accuracy Certification Statement

For Fiscal Year Ending

6/30/2018

Pennsylvania Department of Education
&

Office of Comptroller Operations

PDE-2056: Intermediate Unit

PDE-2057: School District, AVTS/CTC, Charter School,
and Special Program Jointure

CERTIFICATION: By signing this page I agree that the electronic data submitted is a complete and accurate statement of the financial operations and status of the local education agency for the fiscal year. It has been prepared in accordance with generally accepted accounting principles and established Commonwealth of PA reporting guidelines.

Chief School Administrator Signature

Date

Board Secretary Signature

Date

Marcia Stokes

(717)328-3127 Ext :2805

Contact Person

Contact Person Telephone Number

marcia.stokes@tus.k12.pa.us

Contact Person E-mail Address

Contact Person Fax Number

Audit Certification

Annual Financial Report:

For Fiscal Year Ending **6/30/2018**

(Pursuant to PA School Code Section 218(b))

LEA Name : Tuscarora SD
AUN Number : 112286003
County : Franklin

Audit Certification Due:
12/31/2018

This certification is applicable to the Annual Financial Report data submitted through the Consolidated Financial Reporting System on: _____
Date

Auditing Firm:

Auditor Contact Name:

Auditor Phone:

Auditor E-mail:

, , -

CERTIFICATION: By signing this page I agree that the financial statements of the school have been properly audited as noted above pursuant to Article XXIV, and in the auditor's professional opinion, the Annual Financial Report (PDE-2057) submitted on the date referenced is materially consistent with the audited financial statements.

Chief School Administrator

Board Secretary

Signature

Date

Signature

Date

Marcia Stokes

(717)328-3127 Ext :2805

Contact Person

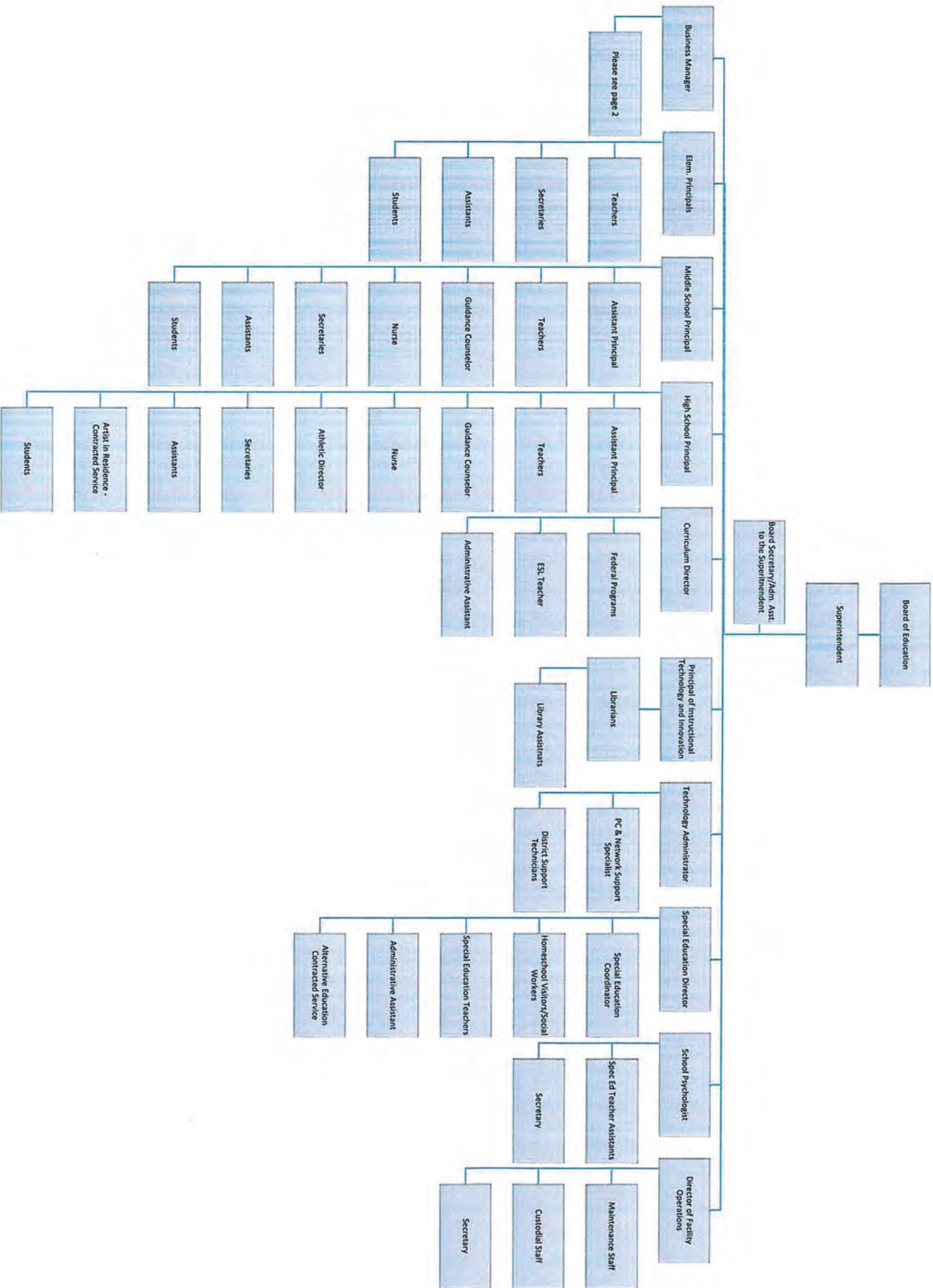
Contact Person Telephone Number

marcia.stokes@tus.k12.pa.us

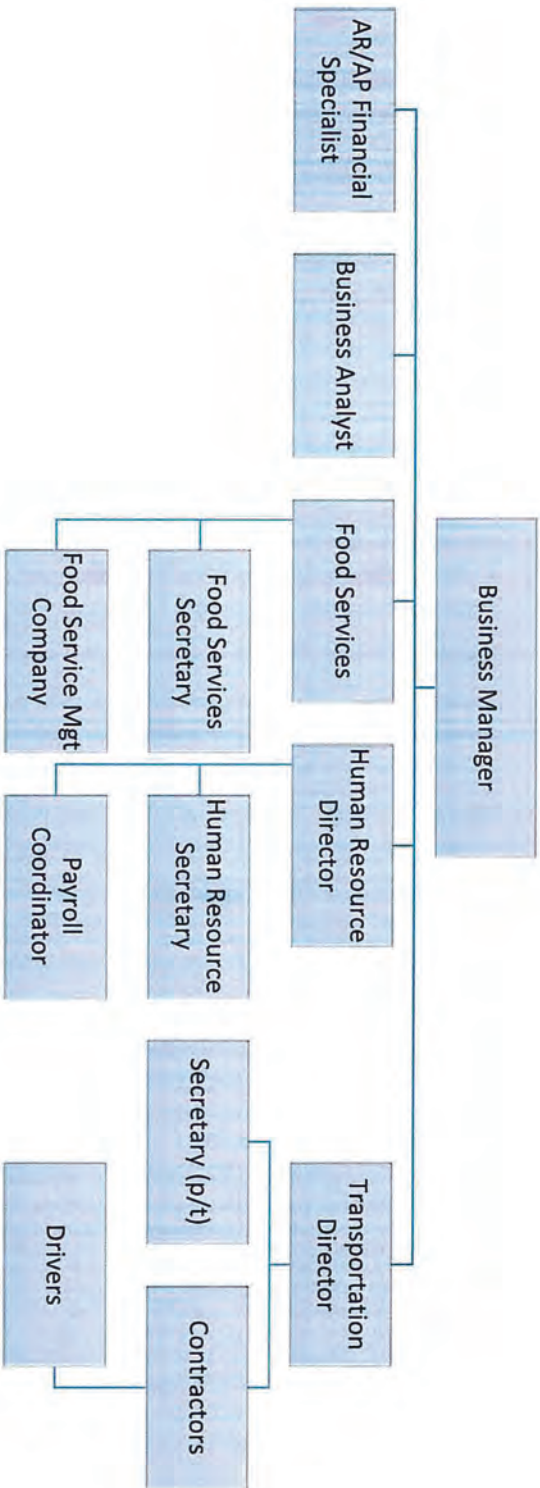
Contact Person E-mail Address

Contact Person Fax Number

TUSCARORA SCHOOL DISTRICT – ORGANIZATIONAL CHART 2016/17 SCHOOL YEAR



TUSCARORA SCHOOL DISTRICT – ORGANIZATIONAL CHART – PAGE 2 BUSINESS OFFICE 2016/17 SCHOOL YEAR



<u>Val Number</u>	<u>Description</u>	<u>Justification</u>
12195	REG - Current Year AFR Beginning Fund Balance must equal Prior Year AFR Ending Fund Balance. Justifications to this error must fully explain the situation that prompted a fund balance restatement. "Auditor Adjustment" is not a sufficient justification. Total Govt Funds, Beg Bal: \$10,472,189.00 PY Ending Bal, Govt Funds: \$10,858,868.00	restatement to corrected taxes receivable as of 6/30/17 for real estate and EIT restatement to correct unemployment liability to accrue employee benefit expense at 6/30/17
12196	REG - Fund 10: Current Year AFR Beginning Fund Balance must equal Prior Year AFR Ending Fund Balance. Justifications to this error must fully explain the situation that prompted a fund balance restatement. "Auditor Adjustment" is not a sufficient justification. REG Fund 10, Beg Fund Bal: \$5,285,634.00 PY Ending Fund Balance: \$5,672,314.00	restatement to corrected taxes receivable as of 6/30/17 for real estate and EIT restatement to correct unemployment liability to accrue employee benefit expense at 6/30/17
12206	REG - Fund 32: Current Year AFR Beginning Fund Balance must equal Prior Year AFR Ending Fund Balance. Justifications to this error must fully explain the situation that prompted a fund balance restatement. "Auditor Adjustment" is not a sufficient justification. REG Fund 32, Beg Fund Bal: \$5,610,892.00 PY Ending Fund Balance: \$5,621,775.00	Restatement to correct due to/due from between capital projects fund and capital reserve fund
12207	REG - Fund 39: Current Year AFR Beginning Fund Balance must equal Prior Year AFR Ending Fund Balance. Justifications to this error must fully explain the situation that prompted a fund balance restatement. "Auditor Adjustment" is not a sufficient justification. REG Fund 39, Beg Fund Bal: \$-424,337.00 PY Ending Fund Balance: \$-435,221.00	Restatement to correct due to/due from between capital projects fund and capital reserve fund
16230	REP Fund 51 - Net Position - Beginning of Fiscal Year must equal Prior Year AFR, Net Position - End of Year. Justifications to this error must fully explain the situation that prompted a fund balance restatement. "Auditor Adjustment" is not a sufficient justification. REP Fund 51 - Net Position - Beginning of Fiscal Year: \$316,333.00 REP Fund 51, Prior Year AFR, Net Position - End of Year: \$333,963.00	Restatement for implementation of GASB 75 Restatement of capital assets
41050	There is an entry in function 5110- 990 object "Other". Please explain what constitutes "Other". Expenditure 5110-990, Fund 10: \$70,951.00	Loss on extinguishment of debt

Amounts Expressed in Whole Dollars

Assets And Deferred Outflows Of Resources

Assets

0100 Cash and Cash Equivalents	2,077,149				
0110 Investments	6,615,000				
0120 Taxes Receivable	1,064,871				
0130 Due From Other Funds					
0141 Due From Other Governments	113,024				
0142 State Revenue Receivable	1,390,005				
0143 Federal Revenue Receivable	45,080				
0145 Other Intergovernmental Revenue Receivable					
0146 Due from Primary Government					
0147 Due from Component Unit					
0150 Other Receivables	73,354				
0170 Inventories	40,105				
0180 Prepaid Expenses (Expenditures)	381,757				
0190 Other Current Assets					

Total Assets	\$11,800,345				
---------------------	---------------------	--	--	--	--

0910 Deferred Outflows of Resources

Total Assets And Deferred Outflows Of Resources	\$11,800,345				
--	---------------------	--	--	--	--

General Fund (10)
Public Purpose Trust (27)
Other Compt Approved (28)
Athletic / Activity (29)
Capital Reserve (690,1850)
(31)

Amounts Expressed in Whole Dollars

Assets And Deferred Outflows Of Resources

	<u>Capital Reserve (1431)</u> <u>(32)</u>	<u>Other Capital Projects</u> <u>Fund</u> <u>(39)</u>	<u>Debt Service</u> <u>(40)</u>	<u>Permanent</u> <u>(90)</u>	<u>Total Governmental</u> <u>Funds</u>
Assets					
0100 Cash and Cash Equivalents	5,551,219	89,456			7,717,824
0110 Investments					6,615,000
0120 Taxes Receivable					1,064,871
0130 Due From Other Funds	550,000				550,000
0141 Due From Other Governments					113,024
0142 State Revenue Receivable					1,390,005
0143 Federal Revenue Receivable					45,080
0145 Other Intergovernmental Revenue Receivable					
0146 Due from Primary Government					73,354
0147 Due from Component Unit					40,105
0150 Other Receivables					
0170 Inventories					381,757
0180 Prepaid Expenses (Expenditures)					
0190 Other Current Assets					
Total Assets	\$6,101,219	\$89,456			\$17,991,020

Total Assets And Deferred Outflows Of Resources

0910 Deferred Outflows of Resources					
Total Assets And Deferred Outflows Of Resources	\$6,101,219	\$89,456			\$17,991,020

Amounts Expressed in Whole Dollars

Liabilities And Deferred Inflows Of Resources And Fund Balances

	<u>General Fund</u> <u>(10)</u>	<u>Public Purpose Trust</u> <u>(27)</u>	<u>Other Compt Approved</u> <u>(28)</u>	<u>Athletic / Activity</u> <u>(29)</u>	<u>Capital Reserve (690,</u> <u>1850)</u> <u>(31)</u>
Liabilities					
0400 Due to Other Funds	552,577				
0411 Due to Other Governments					
0412 Due to Primary Government					
0413 Due to Component Unit					
0420 Accounts Payable	101,406				
0430 Contracts Payable					
0440 Current Portion of Long-Term Debt					
0450 Short-Term Payables					
0461 Accrued Salaries and Benefits	3,184,222				
0462 Payroll Deductions and Withholding					
0480 Unearned Revenues					
0490 Other Current Liabilities	81,913				
Total Liabilities	\$3,920,118				
Fund Balances					
0950 Deferred Inflows of Resources	553,469				
0810 Nonspendable Fund Balance	421,862				
0820 Restricted Fund Balance					
0830 Committed Fund Balance	3,980,514				
0840 Assigned Fund Balance	180,000				
0850 Unassigned Fund Balance	2,744,382				
Total Fund Balances	\$7,326,758				
Total Liabilities, Deferred Inflows Of Resources And Fund Balances	\$11,800,345				

Amounts Expressed in Whole Dollars

Capital Reserve (1431) (32) Other Capital Projects Fund (39) Debt Service (40) Permanent (90) Total Governmental Funds

Liabilities And Deferred Inflows Of Resources And Fund Balances

Liabilities

0400 Due to Other Funds					552,577
0411 Due to Other Governments					
0412 Due to Primary Government					
0413 Due to Component Unit					
0420 Accounts Payable	2,756				104,162
0430 Contracts Payable					
0440 Current Portion of Long-Term Debt					
0450 Short-Term Payables					
0461 Accrued Salaries and Benefits					3,184,222
0462 Payroll Deductions and Withholding					
0480 Unearned Revenues					
0490 Other Current Liabilities					81,913
Total Liabilities	\$2,756				\$3,922,874

Fund Balances

0950 Deferred Inflows of Resources					553,469
0810 Nonspendable Fund Balance					421,862
0820 Restricted Fund Balance	6,098,463				6,098,463
0830 Committed Fund Balance					3,980,514
0840 Assigned Fund Balance		89,456			269,456
0850 Unassigned Fund Balance					2,744,382
Total Fund Balances	\$6,098,463	\$89,456			\$13,514,677
Total Liabilities, Deferred Inflows Of Resources And Fund Balances	\$6,101,219	\$89,456			\$17,991,020

	Amounts Expressed in Whole Dollars	General Fund <u>(10)</u>	Public Purpose Trust <u>(27)</u>	Other Compt Approved <u>(28)</u>	Athletic / Activity <u>(29)</u>	Capital Reserve (690- <u>1850)</u>
Revenues						
6000 Revenue from Local Sources		21,199,142				
7000 Revenue from State Sources		16,923,756				
8000 Revenue from Federal Sources		518,914				
Total Revenues		\$38,641,812				
Expenditures						
1000 Instruction		20,002,469				
2000 Support Services		11,905,958				
3000 Operation of Non-Instructional Services		742,104				
4000 Facilities Acquisition, Construction and Improvement Services						
5110 Debt Service		4,925,157				
5130 Refund of Prior Year Revenues / Receipts						
Total Expenditures		\$37,575,688				
Excess (Deficiency) Of Revenues Over Expenditures		\$1,066,124				
Other Financing Sources (Uses)						
9110 Face Value of Bonds Issued						
9120 Proceeds from Refunding of Bonds						
9130 Bond Premiums						
9200 Proceeds from Extended-Term Financing		1,525,000				
9300 Interfund Transfers - IN						
9400 Sale of or Compensation for Loss of Fixed Assets						
9710 Transfers from Component Units						
9720 Transfers from Primary Governments						
9910 Other Financing Sources Not Listed in the 9000 Series						
9990 Insurance Recoveries						
5120 Debt Service – Refunded Bonds						
5150 Bond Discounts						
5200 Interfund Transfers – Out		550,000				
5300 Transfers Out to Component Units/Primary Governments						
Total Other Financing Sources (Uses)		\$975,000				

Amounts Expressed in Whole Dollars

	<u>Capital Reserve (1431)</u> <u>(32)</u>	<u>Other Capital Projects</u> <u>Fund</u> <u>(39)</u>	<u>Debt Service</u> <u>(40)</u>	<u>Permanent</u> <u>(90)</u>	<u>Total Governmental</u> <u>Funds</u>
Revenues					
6000 Revenue from Local Sources	56,681	14,593			21,270,416
7000 Revenue from State Sources					16,923,756
8000 Revenue from Federal Sources					518,914
Total Revenues	\$56,681	\$14,593			\$38,713,086
Expenditures					
1000 Instruction					20,002,469
2000 Support Services		46,011			11,951,969
3000 Operation of Non-Instructional Services					742,104
4000 Facilities Acquisition, Construction and Improvement Services	119,110	1,174,448			1,293,558
5110 Debt Service		1,205,340			6,130,497
5130 Refund of Prior Year Revenues / Receipts					
Total Expenditures	\$119,110	\$2,425,799			\$40,120,597
Excess (Deficiency) Of Revenues Over Expenditures	(\$62,429)	(\$2,411,206)			(\$1,407,511)
Other Financing Sources (Uses)					
9110 Face Value of Bonds Issued		2,925,000			2,925,000
9120 Proceeds from Refunding of Bonds					
9130 Bond Premiums					
9200 Proceeds from Extended-Term Financing					1,525,000
9300 Interfund Transfers - IN	550,000				550,000
9400 Sale of or Compensation for Loss of Fixed Assets					
9710 Transfers from Component Units					
9720 Transfers from Primary Governments					
9910 Other Financing Sources Not Listed in the 9000 Series					
9990 Insurance Recoveries					
5120 Debt Service – Refunded Bonds					
5150 Bond Discounts					
5200 Interfund Transfers – Out					550,000
5300 Transfers Out to Component Units/Primary Governments					
Total Other Financing Sources (Uses)	\$550,000	\$2,925,000			\$4,450,000

Amounts Expressed in Whole Dollars	General Fund <u>(10)</u>	Public Purpose Trust <u>(27)</u>	Other Compt Approved <u>(28)</u>	Athletic / Activity <u>(29)</u>	Capital Reserve (690- <u>1850)</u> <u>(31)</u>
------------------------------------	-----------------------------	-------------------------------------	-------------------------------------	------------------------------------	--

Special And Extraordinary Items

- 9920 Special Items – Gains
- 9930 Extraordinary Items – Gains
- 5520 Special Items – Losses
- 5530 Extraordinary Items – Losses

Net Change In Fund Balances	\$2,041,124				
Fund Balance					
0001 Fund Balance - Beginning of Fiscal Year	5,285,634				
Fund Balance - End Of Year	\$7,326,758				

Amounts Expressed in Whole Dollars	<u>Capital Reserve (1431)</u> <u>(32)</u>	<u>Other Capital Projects</u> <u>Fund</u> <u>(39)</u>	<u>Debt Service</u> <u>(40)</u>	<u>Permanent</u> <u>Fund</u> <u>(90)</u>	<u>Total Governmental</u> <u>Funds</u>
Special And Extraordinary Items					
9920 Special Items – Gains					
9930 Extraordinary Items – Gains					
5520 Special Items – Losses					
5530 Extraordinary Items – Losses					
Net Change In Fund Balances	\$487,571	\$513,794			\$3,042,489
Fund Balance					
0001 Fund Balance - Beginning of Fiscal Year	5,610,892	(424,337)			10,472,189
Fund Balance - End Of Year	\$6,098,463	\$89,457			\$13,514,678

Amounts Expressed in Whole Dollars

Assets And Deferred Outflows Of Resources

Current Assets

	<u>Food Service</u> (51)	<u>Child Care</u> <u>Operations</u> (52)	<u>Other Enterprise</u> (58)	<u>TOTAL</u>	<u>Internal Service</u> (60)
0100 Cash and Cash Equivalents	256,093			256,093	
0110 Investments					
0130 Due From Other Funds	2,577			2,577	
0141 Due From Other Governments					
0142 State Revenue Receivable	1			1	
0143 Federal Revenue Receivable	5,229			5,229	
0146 Due from Primary Government					
0147 Due from Component Unit					
0150 Other Receivables					
0170 Inventories	52,109			52,109	
0180 Prepaid Expenses (Expenditures)					
0190 Other Current Assets					
Total Current Assets	\$316,009			\$316,009	

Noncurrent Assets

0211 Land					
0212 Site Improvements (Net)					
0220 Buildings and Building Improvements (Net)					
0230 Machinery, Equipment and Furniture (Net)	171,670			171,670	
0250 Construction in Progress					
0260 Long Term Prepayments					
0290 Other Noncurrent Assets					
Total Noncurrent Assets	\$171,670			\$171,670	
0910 Deferred Outflows of Resources	30,537			30,537	
Total Assets And Deferred Outflows Of Resources	\$518,216			\$518,216	

	Amounts Expressed in Whole Dollars							
		<u>Food Service</u>	<u>Child Care</u>	<u>Other Enterprise</u>	<u>TOTAL</u>	<u>Internal Service</u>		
		(51)	(52)	(58)		(60)		
Liabilities And Deferred Inflows Of Resources And Net Position								
Current Liabilities								
0400 Due to Other Funds								
0411 Due to Other Governments								
0413 Due to Component Unit								
0420 Accounts Payable	31,317				31,317			
0430 Contracts Payable								
0440 Current Portion of Long-Term Debt								
0450 Short-Term Payables								
0461 Accrued Salaries and Benefits								
0462 Payroll Deductions and Withholding								
0480 Unearned Revenues								
0490 Other Current Liabilities								
Total Current Liabilities		\$31,317			\$31,317			
Noncurrent Liabilities								
0510 Bonds Payable								
0520 Extended-Term Financing Agreements Payable								
0530 Lease-Purchase Obligations								
0540 Accumulated Compensated Absences								
0550 Authority Lease Obligations								
0560 Other Post-Employment Benefits (OPEB)		135,660			135,660			
0570 Net Pension Liability								
0599 Other Noncurrent Liabilities								
Total Noncurrent Liabilities		\$135,660			\$135,660			
Total Liabilities		\$166,977			\$166,977			
0950 Deferred Inflows of Resources		6,082			6,082			
Net Position								
0791 Net Investment in Capital Assets		171,670			171,670			
0008 Restricted Net Position (0792 – 0798)								
0799 Unrestricted Net Position		173,487			173,487			
Total Net Position		\$345,157			\$345,157			
Total Liabilities And Deferred Inflows Of Resources And Net Position		\$518,216			\$518,216			

	Amounts Expressed in Whole Dollars			
	<u>Food Service</u> (51)	<u>Child Care Operations</u> (52)	<u>Other Enterprise</u> (58)	<u>TOTAL</u>
				<u>Internal Service</u> (60)
Operating Revenues				
6600 Food Service Revenue	580,028			580,028
0071 Charges for Services				
0072 Other Operating Revenue				
Total Operating Revenues	\$580,028			\$580,028
Operating Expenses				
100 Personnel Services – Salaries	27,988			27,988
200 Personnel Services – Employee Benefits	30,057			30,057
300 Purchased Professional and Technical Services				
400 Purchased Property Services	29,814			29,814
500 Other Purchased Services	1,079,457			1,079,457
600 Supplies	113,993			113,993
740 Depreciation	31,855			31,855
810 Dues and Fees	2,621			2,621
890 Miscellaneous Expenditures				
Total Operating Expenses	\$1,315,785			\$1,315,785
Operating Income (Loss)	(\$735,757)			(\$735,757)
Non Operating Revenues (Expenses)				
6500 Earnings on Investments	452			452
6920 Contributions and Donations from Private Sources				
6930 Gains or Losses on Sale of Fixed Assets	2,975			2,975
6991 Refunds of a Prior Year Expenditure				
7000 Revenue from State Sources	48,004			48,004
8000 Revenue from Federal Sources	713,150			713,150
820 Claims and Judgments Against the LEA				
830 Interest				
TOTAL Non Operating Revenues (Expenses)	\$764,581			\$764,581
Income (Loss) Before Contributions And Transfers	\$28,824			\$28,824

Amounts Expressed in Whole Dollars	<u>Food Service</u> (51)	<u>Child Care Operations</u> (52)	<u>Other Enterprise</u> (58)	<u>TOTAL</u>	<u>Internal Service</u> (60)
Contributions, Transfers, and Special and Extraordinary Items					
5200 Interfund Transfers – Out					
5300 Transfers Out to Component Units/Primary Governments					
5520 Special Items – Losses					
5530 Extraordinary Items – Losses					
9300 Interfund Transfers - IN					
9500 Capital Contributions					
9700 Transfers IN From Component Units/Primary Governments					
9920 Special Items – Gains					
9930 Extraordinary Items – Gains					
Change in Net Position	\$28,824			\$28,824	
0002 Net Position - Beginning of Fiscal Year	316,333			316,333	
0003 Accounting Changes / Residual Equity Transfers					
Net Position - End Of Year	\$345,157			\$345,157	

Amounts Expressed in Whole Dollars

	<u>Food Service</u> <u>(51)</u>	<u>Child Care Operations</u> <u>(52)</u>	<u>Other Enterprise</u> <u>(58)</u>	<u>TOTAL</u>	<u>Internal Service(60)</u>
Cash Flows From Operating Activities					
0011 Cash Receipts From Users	580,609			580,609	
0012 Cash Receipts From Assessments Made to Other Funds					
0013 Cash Receipts From Earnings on Investments					
0014 Cash Receipts From Other Operating Revenue	73,860			73,860	
0015 Cash Payments To Employees For Services					
0016 Cash Payments For Insurance Claims					
0017 Cash Payments To Suppliers For Goods and Services	1,139,233			1,139,233	
0018 Cash Payments For Other Operating Expenses					
Net Cash Provided By (Used For) Operating Activities	(\$632,484)			(\$632,484)	
Cash Flows From Non-Capital Financing Activities					
0021 Receipts From Local Sources - 6000					
0022 Receipts From State Sources - 7000	53,499			53,499	
0023 Receipts From Federal Sources -8000	688,333			688,333	
0024 Notes and Loans Received (Repaid)					
0025 Interest Paid on Notes/Loans - 5100-830					
0026 Operating Transfers In (Out)/Residual Equity Trans					
0027 Operating Transfers In (Out) Primary Government / Comp Unit					
0028 Receipts From Refund of Prior Year Expenditures - 6991					
0029 Special and Extraordinary Gains (losses)					
0030 Receipts from Insurance Recoveries -9990					
Net Cash Prov By (Used for) Non-Capital Financing Activities	\$741,832			\$741,832	
Cash Flows From Capital and Related Financing Activities					
0031 Payments For Fac Acq, Const, and Imp - 4000					
0032 Gain / (Loss) on Sale of Fixed Assets - 6930	2,975			2,975	
0033 Proceeds From Extended Term Financing - 9200					
0034 Principal Paid on Financing Agreements					
0035 Interest Paid on Financing Agreements - 5100-830					
0036 (Inc) Dec in Contributed Capital	(60,117)			(60,117)	
Net Cash Prov By (Used for) Capital and Related Financing Activities	(\$57,142)			(\$57,142)	
Cash Flows From Investing Activities					
0041 Earnings on Investments - 6500					452
0042 Purchase of Inv Securities / Deposits to Inv Pools					
0043 Receipts From Investment Pool Withdrawals					
0044 Proceeds from Sale and Maturity of Inv Securities					

0045 Loans Received (Paid)

Net Cash Prov By (Used for) Investing Activities

\$452

\$452

	<u>Food Service</u> (51)	<u>Child Care Operations</u> (52)	<u>Other Enterprise</u> (60)	<u>TOTAL</u>	<u>Internal Service</u> (60)
Net Increase (Decrease) in Cash Flows	52,658			52,658	
0004 Cash and Cash Equivalents Beginning of Year					
Cash and Cash Equivalents at Year End	\$52,658			\$52,658	

Reconciliation of Operating Income (Loss) To Net Cash Provided by (Used For) Operating Activities

0005 Operating Income (Loss) per REP (735,757)

Adjustments

- 0051 Depreciation and Net Amortization
- 0052 Provision for Uncollectible Accounts
- 0053 Other Adjustments

Effect of Changes in Assets, Liabilities, Deferred Outflows and Deferred Inflows

- 0054 (Inc) Dec In Accounts Receivable (0120-0150)
- 0055 Advances to Other Funds (0160)
- 0056 (Inc) Dec in Inventories (0170)
- 0057 (Inc) Dec in Prepaid Expenses (0180)
- 0058 (Inc) Dec in Other Current or Noncurrent Assets
- 0064 Deferred Outflows (0910)
- 0059 Inc (Dec) in Accounts Payable (0400-0450)
- 0060 Inc (Dec) in Accrued Salaries/Benefits (0461)
- 0065 Inc (Dec) in Net Pension Liabilities (0570)
- 0066 Inc (Dec) in Other Postemp Benefit Oblig (0560)
- 0061 Inc (Dec) in Payroll Deductions/Withholding (0462)
- 0062 Inc (Dec) in Unearned Revenue (0480)
- 0063 Inc (Dec) in Other Current or Noncurrent Liabilities
- 0067 Deferred Inflows (0950)

Total Adjustments					(\$735,757)
Cash Provided By (Used for) Total					(\$735,757)

COMBINED STATEMENT OF CASH FLOWS
SCHEDULE OF NONCASH INVESTING, CAPITAL, AND FINANCING ACTIVITIES

Explanation of Transaction and Balance Sheet Effect	Amount
Total	

Amounts Expressed in Whole Dollars

Assets And Deferred Outflows Of Resources

Assets

0100	Cash and Cash Equivalents					2,364,460
0110	Investments					
0130	Due From Other Funds					
0147	Due from Component Unit					
0150	Other Receivables					
0170	Inventories					
0180	Prepaid Expenses (Expenditures)					
0190	Other Current Assets					
0220	Buildings and Building Improvements (Net)					
0230	Machinery, Equipment and Furniture (Net)					

Total Assets

\$2,364,460

0910 Deferred Outflows of Resources

Total Assets And Deferred Outflows Of Resources

\$2,364,460

Amounts Expressed in Whole Dollars

Liabilities, Deferred Inflows Of Resources And Net Position

Liabilities

0400 Due to Other Funds					
0411 Due to Other Governments					
0412 Due to Primary Government					
0413 Due to Component Unit					
0420 Accounts Payable					
0430 Contracts Payable					
0450 Short-Term Payables					
0461 Accrued Salaries and Benefits					
0462 Payroll Deductions and Withholding					
0480 Unearned Revenues					
0490 Other Current Liabilities					91,753
Total Liabilities					\$91,753

Deferred Inflows of Resources

Net Position

0791 Net Investment in Capital Assets					
0009 Restricted Net Position (0792 – 0798)			2,272,707		
0799 Unrestricted Net Position					
Total Net Position			\$2,272,707		\$91,753
Total Liabilities, Deferred Inflows Of Resources And Net Position			\$2,272,707		\$91,753

Amounts Expressed in Whole Dollars

Liabilities, Deferred Inflows Of Resources And Net Position

Liabilities

0400 Due to Other Funds				
0411 Due to Other Governments				
0412 Due to Primary Government				
0413 Due to Component Unit				
0420 Accounts Payable				
0430 Contracts Payable				
0450 Short-Term Payables				
0461 Accrued Salaries and Benefits				
0462 Payroll Deductions and Withholding				
0480 Unearned Revenues				
0490 Other Current Liabilities				91,753
Total Liabilities				\$91,753
0950 Deferred Inflows of Resources				
Net Position				
0791 Net Investment in Capital Assets				
0009 Restricted Net Position (0792 - 0798)				2,272,707
0799 Unrestricted Net Position				
Total Net Position				\$2,272,707
Total Liabilities, Deferred Inflows Of Resources And Net Position				\$2,364,460

Other Agency (89)

Discrete Component Units (98)

Discrete Component Units (99)

Total Fiduciary Funds

	Private Purpose Trust (71)	Investment Trust (72)	Pension Trust (73)	Discrete Component Units (98)	Discrete Component Units (99)	Total Fiduciary Funds
Additions						
0091 Gifts and Contributions	17,181					17,181
0092 Other Additions	30,021					30,021
Deductions						
0093 Scholarships Awarded	13,664					13,664
0094 Other Deductions						
Change in Net Position	\$33,538					\$33,538
0006 Net Position – Beginning of Fiscal Year	2,239,169					2,239,169
0007 Net Position Held in Trust for Pension Benefits						
Net Position - End of Fiscal Year	\$2,272,707					\$2,272,707

	<u>Revenue Reported In Current Year</u>	<u>Current Year Tax Accrual</u>	<u>Prior Year Tax Accrual</u>	<u>Taxes Collected In Current Year</u>
Revenue from Local Sources				
6111 Current Real Estate Taxes	17,155,616.53			17,155,616.53
6112 Interim Real Estate Taxes	55,093.93			55,093.93
6113 Public Utility Realty Taxes	24,197.64			24,197.64
6114 Payments in Lieu of Current Taxes - State / Local	12,331.11			12,331.11
6151 Current Act 511 Earned Income Taxes	2,000,681.83			2,000,681.83
6153 Current Act 511 Real Estate Transfer Taxes	297,015.71			297,015.71
6411 Delinquent Real Estate Taxes	924,662.54			924,662.54
6500 Earnings on Investments	134,546.20			
6700 Revenues from LEA Activities	82,121.50			
6832 Federal IDEA Revenue Received as Pass Through	352,423.31			
6910 Rentals	32,284.50			
6941 Regular Day School Tuition	9,086.00			
6942 Summer School Tuition	272.50			
6944 Receipts from Other LEAs in Pennsylvania - Education	35,899.98			
6980 Revenue from Community Services Activities	8,439.00			
6991 Refunds of a Prior Year Expenditure	17,061.05			
6992 Energy Efficiency Revenues and Incentives	8,903.08			
6999 Other Revenues Not Specified Above	48,505.52			
TOTAL Revenue from Local Sources	\$21,199,141.93			\$20,469,599.29

**Revenue Reported
In Current Year**

Revenue from State Sources

7110	Basic Education Funding	8,363,122.80
7160	Tuition for Orphans Subsidy	101,104.06
7271	Special Education funds for School-Aged Pupils	1,662,922.35
7292	Pre-K Counts	306,000.00
7311	Pupil Transportation Subsidy	1,488,450.28
7312	Nonpublic and Charter School Pupil Transportation Subsidy	54,670.00
7320	Rental and Sinking Fund Payments / Building Reimbursement Subsidy	806,864.85
7330	Health Services (Medical, Dental, Nurse, Act 25)	44,460.10
7340	State Property Tax Reduction Allocation	630,168.71
7505	Ready to Learn Block Grant	361,008.00
7810	State Share of Social Security and Medicare Taxes	565,014.30
7820	State Share of Retirement Contributions	2,539,971.00
TOTAL Revenue from State Sources		\$16,923,756.45

**Revenue Reported
In Current Year**

Revenue from Federal Sources

8514 NCLB, Title I - Improving the Academic Achievement of the Disadvantaged	366,243.82
8515 NCLB, Title II - Preparing, Training and Recruiting High Quality Teachers and Principals	130,914.23
8517 NCLB, Title IV - 21st Century Schools	10,000.00
8810 School-Based Access Medicaid Reimbursement Program (SBAP) Reimbursements (Access)	11,756.27
TOTAL Revenue from Federal Sources	\$518,914.32

	<u>Revenue Reported In Current Year</u>
<u>Other Financing Sources</u>	
9290 Other Extended-Term Financing Proceeds	1,525,000.00
TOTAL Other Financing Sources	\$1,525,000.00
TOTAL FROM ALL SOURCES	\$20,469,599.29

Revenue from Local Sources	21,199,141.93
Revenue from State Sources	16,923,756.45
Revenue from Federal Sources	518,914.32
Other Financing Sources	1,525,000.00
TOTAL FROM ALL SOURCES	\$40,166,812.70

	<u>Total</u>
General Fund (10)	
1000 Instruction	
100 Personnel Services – Salaries	
100 Personnel Services – Salaries	10,088,269.41
Total Personnel Services – Salaries	\$10,088,269.41
200 Personnel Services – Employee Benefits	
210 Group Insurance – Contracted Provider	31,544.69
220 Social Security Contributions	748,235.31
230 PSERS Retirement Contributions	3,238,143.50
250 Unemployment Compensation	(332.29)
260 Workers' Compensation	90,255.56
270 Group Insurance – Self-Insurance	1,995,259.16
292 Health Savings Accounts	154,476.17
Total Personnel Services – Employee Benefits	\$6,257,582.10
300 Purchased Professional and Technical Services	
322 Professional Educational Services – Ius	409,404.72
324 Professional Educational Services – Employee Training and Development Services	23,190.48
329 Professional Educational Services – Other	514,718.05
330 Other Professional Services	37,300.00
Total Purchased Professional and Technical Services	\$984,613.25
400 Purchased Property Services	
430 Repairs and Maintenance Services	4,914.00
440 Rentals	1,143.44
Total Purchased Property Services	\$6,057.44
500 Other Purchased Services	
510 Student Transportation Services	37,687.34
530 Communications	7,790.66
549 Other Advertising/Public Relations	211.90
561 Tuition To Other School Districts Within the State	278,352.93
562 Tuition To Pennsylvania Charter Schools	908,580.46
564 Tuition To Career and Technology Centers	560,806.75
568 Tuition To Private Residential Rehabilitative Institutions (PRR) [In-State] and Detention Centers	46,402.81
569 Tuition – Other	585.20
580 Travel	16,467.51
Total Other Purchased Services	\$1,856,885.56
600 Supplies	
610 General Supplies	217,160.39
620 Energy	660.09
630 Food	5,546.68
640 Books and Periodicals	65,671.90
650 Supplies & Fees – Technology Related	204,425.28
Total Supplies	\$493,464.34
700 Property	
752 Capital Equipment – Original and Additional	6,906.25
Total Property	\$6,906.25

General Fund (10)

1000 Instruction

800 Other Objects

810 Dues and Fees

890 Miscellaneous Expenditures

Total Other Objects

Total 1000 Instruction

Total

2,683.00

306,008.00

\$308,691.00

\$20,002,469.35

General Fund (10)

1100 Regular Programs – Elementary / Secondary

100 Personnel Services – Salaries

Elementary	Secondary	Federal	Total
4,453,806.06	4,007,592.07	223,317.00	8,684,715.13
\$4,453,806.06	\$4,007,592.07	\$223,317.00	\$8,684,715.13

200 Personnel Services – Employee Benefits

14,933.09	11,444.72	653.16	27,030.97
330,733.16	298,259.85	16,654.73	645,647.74
1,434,449.88	1,287,336.54	72,039.60	2,793,826.02
(152.85)	(179.44)		(332.29)
37,696.75	38,844.77	1,879.54	78,421.06
906,455.89	734,237.57	42,114.44	1,682,807.90
66,496.36	57,055.52	2,800.00	126,351.88
\$2,790,612.28	\$2,426,999.53	\$136,141.47	\$5,353,753.28

300 Purchased Professional and Technical Services

1,984.12	2,329.18		4,313.30
324 Professional Educational Services – Employee Training and Development Services		23,190.48	23,190.48
329 Professional Educational Services – Other	81,174.63	24,377.89	273,300.45
330 Other Professional Services	26,916.00	900.00	37,300.00
\$179,216.05	\$110,419.81	\$48,468.37	\$338,104.23

400 Purchased Property Services

4,914.00			4,914.00
1,143.44			1,143.44
\$6,057.44	\$6,057.44		\$6,057.44

500 Other Purchased Services

23,481.53	10,106.41		33,587.94
1,596.65	6,002.01		7,598.66
8,216.76	19,655.73		27,872.49
242,947.58	446,044.00		688,991.58
1,663.30	28,350.34	8,935.17	28,350.34
	3,642.46		14,240.93
\$277,905.82	\$513,800.95	\$8,935.17	\$800,641.94

600 Supplies

88,514.45	113,562.34	6,988.70	209,065.49
4,688.98	428.50	401.84	5,519.32
22,465.45	40,758.98	1,895.24	65,119.67
80,653.54	111,184.47		191,838.01
\$196,322.42	\$265,934.29	\$9,285.78	\$471,542.49

700 Property

3,176.88	3,729.37		6,906.25
\$3,176.88	\$3,729.37		\$6,906.25

800 Other Objects

272.00	926.00	1,085.00	2,283.00
--------	--------	----------	----------

General Fund (10)

1100 Regular Programs – Elementary / Secondary

800 Other Objects

890 Miscellaneous Expenditures

	Elementary	Secondary	Federal	Total
Total Other Objects	\$276.00	\$930.00	\$1,085.00	\$2,291.00
Total 1100 Regular Programs – Elementary / Secondary	\$7,901,315.51	\$7,335,463.46	\$427,232.79	\$15,664,011.76

	Elementary	Secondary	Federal	Total
General Fund (10)				
1110 Regular Programs				
100 Personnel Services – Salaries				
100 Personnel Services – Salaries	4,453,806.06	4,007,592.07		8,461,398.13
Total Personnel Services – Salaries	\$4,453,806.06	\$4,007,592.07		\$8,461,398.13
200 Personnel Services – Employee Benefits				
210 Group Insurance – Contracted Provider	14,933.09	11,444.72		26,377.81
220 Social Security Contributions	330,733.16	298,259.85		628,993.01
230 PSERS Retirement Contributions	1,434,449.88	1,287,336.54		2,721,786.42
250 Unemployment Compensation	(152.85)	(179.44)		(332.29)
260 Workers' Compensation	37,696.75	38,844.77		76,541.52
270 Group Insurance – Self-Insurance	906,455.89	734,237.57		1,640,693.46
292 Health Savings Accounts	66,496.36	57,055.52		123,551.88
Total Personnel Services – Employee Benefits	\$2,790,612.28	\$2,426,999.53		\$5,217,611.81
300 Purchased Professional and Technical Services				
322 Professional Educational Services – Ius	1,984.12	2,329.18		4,313.30
329 Professional Educational Services – Other	167,747.93	81,174.63		248,922.56
330 Other Professional Services	9,484.00	26,916.00		36,400.00
Total Purchased Professional and Technical Services	\$179,216.05	\$110,419.81		\$289,635.86
400 Purchased Property Services				
430 Repairs and Maintenance Services		4,914.00		4,914.00
440 Rentals		1,143.44		1,143.44
Total Purchased Property Services		\$6,057.44		\$6,057.44
500 Other Purchased Services				
510 Student Transportation Services	23,481.53	10,106.41		33,587.94
530 Communications	1,596.65	6,002.01		7,598.66
561 Tuition To Other School Districts Within the State	8,216.76	19,655.73		27,872.49
562 Tuition To Pennsylvania Charter Schools	242,947.58	446,044.00		688,991.58
568 Tuition To Private Residential Rehabilitative Institutions (PRR) [In-State] and Detention Centers		28,350.34		28,350.34
580 Travel	1,663.30	3,642.46		5,305.76
Total Other Purchased Services	\$277,905.82	\$513,800.95		\$791,706.77
600 Supplies				
610 General Supplies	88,514.45	113,562.34		202,076.79
630 Food	4,688.98	428.50		5,117.48
640 Books and Periodicals	22,465.45	40,758.98		63,224.43
650 Supplies & Fees – Technology Related	80,653.54	111,184.47		191,838.01
Total Supplies	\$196,322.42	\$265,934.29		\$462,256.71
700 Property				
752 Capital Equipment – Original and Additional	3,176.88	3,729.37		6,906.25
Total Property	\$3,176.88	\$3,729.37		\$6,906.25
800 Other Objects				
810 Dues and Fees	272.00	926.00		1,198.00
890 Miscellaneous Expenditures	4.00	4.00		8.00

General Fund (10)	Elementary	Secondary	Federal	Total
1110 Regular Programs				
Total Other Objects	\$276.00	\$930.00		\$1,206.00
Total 1110 Regular Programs	\$7,901,315.51	\$7,335,463.46		\$15,236,778.97

General Fund (10)

1190 Federally-Funded Regular Programs

100 Personnel Services – Salaries

100 Personnel Services – Salaries

	Elementary	Secondary	Federal	Total
	223,317.00		223,317.00	223,317.00
Total Personnel Services – Salaries	\$223,317.00		\$223,317.00	\$223,317.00

200 Personnel Services – Employee Benefits

210 Group Insurance – Contracted Provider

220 Social Security Contributions

230 PSERS Retirement Contributions

260 Workers' Compensation

270 Group Insurance – Self-Insurance

292 Health Savings Accounts

	Elementary	Secondary	Federal	Total
			653.16	653.16
			16,654.73	16,654.73
			72,039.60	72,039.60
			1,879.54	1,879.54
			42,114.44	42,114.44
			2,800.00	2,800.00
Total Personnel Services – Employee Benefits	\$136,141.47		\$136,141.47	\$136,141.47

300 Purchased Professional and Technical Services

324 Professional Educational Services – Employee Training and Development Services

329 Professional Educational Services – Other

330 Other Professional Services

	Elementary	Secondary	Federal	Total
	23,190.48		23,190.48	23,190.48
	24,377.89		24,377.89	24,377.89
	900.00		900.00	900.00
Total Purchased Professional and Technical Services	\$48,468.37		\$48,468.37	\$48,468.37

500 Other Purchased Services

580 Travel

	Elementary	Secondary	Federal	Total
	8,935.17		8,935.17	8,935.17
Total Other Purchased Services	\$8,935.17		\$8,935.17	\$8,935.17

600 Supplies

610 General Supplies

630 Food

640 Books and Periodicals

	Elementary	Secondary	Federal	Total
	6,988.70		6,988.70	6,988.70
	401.84		401.84	401.84
	1,895.24		1,895.24	1,895.24
Total Supplies	\$9,285.78		\$9,285.78	\$9,285.78

800 Other Objects

810 Dues and Fees

	Elementary	Secondary	Federal	Total
	1,085.00		1,085.00	1,085.00
Total Other Objects	\$1,085.00		\$1,085.00	\$1,085.00

Total 1190 Federally-Funded Regular Programs

	Elementary	Secondary	Federal	Total
	\$427,232.79		\$427,232.79	\$427,232.79
Total 1190 Federally-Funded Regular Programs	\$427,232.79		\$427,232.79	\$427,232.79

General Fund (10)

1200 Special Programs – Elementary / Secondary

100 Personnel Services – Salaries

	Elementary	Secondary	Federal	Total
100 Personnel Services – Salaries	457,395.67	707,692.09	43,909.42	1,208,997.18
Total Personnel Services – Salaries	\$457,395.67	\$707,692.09	\$43,909.42	\$1,208,997.18

200 Personnel Services – Employee Benefits

210 Group Insurance – Contracted Provider	1,745.31	2,169.84	174.87	4,090.02
220 Social Security Contributions	31,356.00	53,456.12	3,256.69	88,068.81
230 PSERS Retirement Contributions	137,967.19	229,315.15	14,104.27	381,386.61
260 Workers' Compensation	3,813.10	6,000.79	372.31	10,186.20
270 Group Insurance – Self-Insurance	126,712.51	128,919.93	15,388.82	271,021.26
292 Health Savings Accounts	11,586.67	12,016.67	1,400.00	25,003.34
Total Personnel Services – Employee Benefits	\$313,180.78	\$431,878.50	\$34,696.96	\$779,756.24

300 Purchased Professional and Technical Services

322 Professional Educational Services – Ius	53,985.50	106,982.92	244,123.00	405,091.42
329 Professional Educational Services – Other	103,857.62	98,792.98		202,650.60
Total Purchased Professional and Technical Services	\$157,843.12	\$205,775.90	\$244,123.00	\$607,742.02

500 Other Purchased Services

510 Student Transportation Services		4,099.40		4,099.40
530 Communications		192.00		192.00
549 Other Advertising/Public Relations		211.90		211.90
561 Tuition To Other School Districts Within the State	25,319.24	101,591.37		126,910.61
562 Tuition To Pennsylvania Charter Schools	68,746.32	150,842.56		219,588.88
568 Tuition To Private Residential Rehabilitative Institutions (PRR) [(In-State) and Detention Centers		18,052.47		18,052.47
569 Tuition – Other		585.20		585.20
580 Travel	414.32	486.38		900.70
Total Other Purchased Services	\$94,479.88	\$276,061.28		\$370,541.16

600 Supplies

610 General Supplies	4,920.91	6,574.21		11,495.12
620 Energy		544.69		544.69
640 Books and Periodicals	348.66	203.57		552.23
Total Supplies	\$5,269.57	\$7,322.47		\$12,592.04

Total 1200 Special Programs – Elementary / Secondary

	\$1,028,169.02	\$1,628,730.24	\$322,729.38	\$2,979,628.64
--	-----------------------	-----------------------	---------------------	-----------------------

General Fund (10)

1210 Life Skills Support

100 Personnel Services – Salaries

	Elementary	Secondary	Federal	Total
100 Personnel Services – Salaries	81,957.24	93,381.44		175,338.68
Total Personnel Services – Salaries	\$81,957.24	\$93,381.44		\$175,338.68

200 Personnel Services – Employee Benefits

210 Group Insurance – Contracted Provider	283.16	294.30		577.46
220 Social Security Contributions	6,140.48	7,060.34		13,200.82
230 PSERS Retirement Contributions	26,693.55	30,430.23		57,123.78
260 Workers' Compensation	695.05	793.78		1,488.83
270 Group Insurance – Self-Insurance	20,773.50	15,245.48		36,018.98
292 Health Savings Accounts	1,172.40	1,400.00		2,572.40
Total Personnel Services – Employee Benefits	\$55,758.14	\$55,224.13		\$110,982.27

300 Purchased Professional and Technical Services

322 Professional Educational Services – Ius		12,778.81	12,896.00	25,674.81
329 Professional Educational Services – Other	32,808.82	51,129.48		83,938.30
Total Purchased Professional and Technical Services	\$32,808.82	\$63,908.29	\$12,896.00	\$109,613.11

500 Other Purchased Services

561 Tuition To Other School Districts Within the State	3,442.82	18,600.51		22,043.33
562 Tuition To Pennsylvania Charter Schools		11,442.48		11,442.48
Total Other Purchased Services	\$3,442.82	\$30,042.99		\$33,485.81

600 Supplies

610 General Supplies	695.04	3,923.32		4,618.36
640 Books and Periodicals		184.10		184.10
Total Supplies	\$695.04	\$4,107.42		\$4,802.46

Total 1210 Life Skills Support

	\$174,662.06	\$246,664.27	\$12,896.00	\$434,222.33
--	---------------------	---------------------	--------------------	---------------------

General Fund (10)

1220 Sensory Support

300 Purchased Professional and Technical Services

322 Professional Educational Services – lus

Total Purchased Professional and Technical Services

600 Supplies

610 General Supplies

Total Supplies

Total 1220 Sensory Support

	<u>Elementary</u>	<u>Secondary</u>	<u>Federal</u>	<u>Total</u>
	7,022.31	61,853.01	54,000.00	122,875.32
	\$7,022.31	\$61,853.01	\$54,000.00	\$122,875.32
	497.20	165.00		662.20
	\$497.20	\$165.00		\$662.20
	\$7,519.51	\$62,018.01	\$54,000.00	\$123,537.52

General Fund (10)

1230 Emotional Support

100 Personnel Services – Salaries

	Elementary	Secondary	Federal	Total
100 Personnel Services – Salaries	114,615.25	192,861.96		307,477.21
Total Personnel Services – Salaries	\$114,615.25	\$192,861.96		\$307,477.21

200 Personnel Services – Employee Benefits

210 Group Insurance – Contracted Provider	358.58	479.71		838.29
220 Social Security Contributions	8,481.82	14,648.62		23,130.44
230 PSERS Retirement Contributions	36,958.84	62,537.75		99,496.59
260 Workers' Compensation	968.53	1,635.05		2,603.58
270 Group Insurance – Self-Insurance	21,952.44	29,474.90		51,427.34
292 Health Savings Accounts	2,720.00	2,800.00		5,520.00
Total Personnel Services – Employee Benefits	\$71,440.21	\$111,576.03		\$183,016.24

300 Purchased Professional and Technical Services

322 Professional Educational Services – Ius	14,571.90	10,749.25	101,000.00	126,321.15
329 Professional Educational Services – Other	48,721.16	13,841.11		62,562.27
Total Purchased Professional and Technical Services	\$63,293.06	\$24,590.36	\$101,000.00	\$188,883.42

500 Other Purchased Services

561 Tuition To Other School Districts Within the State	14,205.65	48,178.20		62,383.85
562 Tuition To Pennsylvania Charter Schools	13,664.04	381.00		14,045.04
568 Tuition To Private Residential Rehabilitative Institutions (PRR) [(In-State) and Detention Centers		16,440.87		16,440.87
Total Other Purchased Services	\$27,869.69	\$65,000.07		\$92,869.76

600 Supplies

610 General Supplies	1,768.55	293.42		2,061.97
Total Supplies	\$1,768.55	\$293.42		\$2,061.97
Total 1230 Emotional Support	\$278,986.76	\$394,321.84	\$101,000.00	\$774,308.60

General Fund (10)

1240 Academic Support

100 Personnel Services – Salaries

100 Personnel Services – Salaries

	Elementary	Secondary	Federal	Total
	258,823.18	421,448.69		680,271.87
Total Personnel Services – Salaries	\$258,823.18	\$421,448.69		\$680,271.87

200 Personnel Services – Employee Benefits

210 Group Insurance – Contracted Provider
 220 Social Security Contributions
 230 PSERS Retirement Contributions
 260 Workers' Compensation
 270 Group Insurance – Self-Insurance
 292 Health Savings Accounts

	1,103.57	1,395.83		2,499.40
	16,580.70	31,747.16		48,327.86
	74,314.80	136,347.17		210,661.97
	2,132.56	3,571.96		5,704.52
	83,986.57	84,199.55		168,186.12
	7,694.27	7,816.67		15,510.94
Total Personnel Services – Employee Benefits	\$185,812.47	\$265,078.34		\$450,890.81

300 Purchased Professional and Technical Services

322 Professional Educational Services – Ius
 329 Professional Educational Services – Other

	4,553.07	14,783.42	25,000.00	39,783.42
		12,191.01		16,744.08
Total Purchased Professional and Technical Services	\$4,553.07	\$26,974.43	\$25,000.00	\$56,527.50

500 Other Purchased Services

510 Student Transportation Services
 530 Communications
 549 Other Advertising/Public Relations
 562 Tuition To Pennsylvania Charter Schools
 568 Tuition To Private Residential Rehabilitative Institutions (PRR) [In-State] and Detention Centers
 569 Tuition – Other
 580 Travel

		4,099.40		4,099.40
		192.00		192.00
		211.90		211.90
	55,082.28	139,019.08		194,101.36
		1,611.60		1,611.60
		585.20		585.20
	414.32	486.38		900.70
Total Other Purchased Services	\$55,496.60	\$146,205.56		\$201,702.16

600 Supplies

610 General Supplies
 620 Energy
 640 Books and Periodicals

	821.28	1,604.52		2,425.80
		544.69		544.69
	348.66	19.47		368.13
Total Supplies	\$1,169.94	\$2,168.68		\$3,338.62

Total 1240 Academic Support

	\$505,855.26	\$861,875.70	\$25,000.00	\$1,392,730.96
--	---------------------	---------------------	--------------------	-----------------------

General Fund (10)

1241 Learning Support – Public

100 Personnel Services – Salaries

	Elementary	Secondary	Federal	Total
100 Personnel Services – Salaries	254,823.18	416,206.69		671,029.87
Total Personnel Services – Salaries	\$254,823.18	\$416,206.69		\$671,029.87

200 Personnel Services – Employee Benefits

210 Group Insurance – Contracted Provider	1,103.57	1,395.83		2,499.40
220 Social Security Contributions	16,277.04	31,348.20		47,625.24
230 PSERS Retirement Contributions	73,012.01	134,639.85		207,651.86
260 Workers' Compensation	2,098.64	3,527.51		5,626.15
270 Group Insurance – Self-Insurance	83,986.57	84,199.55		168,186.12
292 Health Savings Accounts	7,694.27	7,816.67		15,510.94
Total Personnel Services – Employee Benefits	\$184,172.10	\$262,927.61		\$447,099.71

300 Purchased Professional and Technical Services

322 Professional Educational Services – Ius		14,783.42	25,000.00	39,783.42
329 Professional Educational Services – Other	4,553.07	12,191.01		16,744.08
Total Purchased Professional and Technical Services	\$4,553.07	\$26,974.43	\$25,000.00	\$56,527.50

500 Other Purchased Services

510 Student Transportation Services		4,099.40		4,099.40
530 Communications		192.00		192.00
549 Other Advertising/Public Relations		211.90		211.90
562 Tuition To Pennsylvania Charter Schools	55,082.28	139,019.08		194,101.36
568 Tuition To Private Residential Rehabilitative Institutions (PRR) [In-State] and Detention Centers		1,611.60		1,611.60
569 Tuition – Other		585.20		585.20
580 Travel	414.32	486.38		900.70
Total Other Purchased Services	\$55,496.60	\$146,205.56		\$201,702.16

600 Supplies

610 General Supplies	821.28	1,604.52		2,425.80
620 Energy		544.69		544.69
640 Books and Periodicals	348.66	19.47		368.13
Total Supplies	\$1,169.94	\$2,168.68		\$3,338.62

Total 1241 Learning Support – Public

	\$500,214.89	\$854,482.97	\$25,000.00	\$1,379,697.86
--	---------------------	---------------------	--------------------	-----------------------

General Fund (10)

1243 Gifted Support

100 Personnel Services – Salaries

100 Personnel Services – Salaries	4,000.00			9,242.00
Total Personnel Services – Salaries	\$4,000.00	\$5,242.00		\$9,242.00

200 Personnel Services – Employee Benefits

220 Social Security Contributions	303.66	398.96		702.62
230 PSERS Retirement Contributions	1,302.79	1,707.32		3,010.11
260 Workers' Compensation	33.92	44.45		78.37

Total Personnel Services – Employee Benefits

Total Personnel Services – Employee Benefits	\$1,640.37	\$2,150.73		\$3,791.10
Total 1243 Gifted Support	\$5,640.37	\$7,392.73		\$13,033.10

General Fund (10)

1260 Physical Support

100 Personnel Services – Salaries

	Elementary	Secondary	Federal	Total
100 Personnel Services – Salaries	2,000.00		43,909.42	45,909.42
Total Personnel Services – Salaries	\$2,000.00		\$43,909.42	\$45,909.42

200 Personnel Services – Employee Benefits

210 Group Insurance – Contracted Provider			174.87	174.87
220 Social Security Contributions	153.00		3,256.69	3,409.69
230 PSERS Retirement Contributions			14,104.27	14,104.27
260 Workers' Compensation	16.96		372.31	389.27
270 Group Insurance – Self-Insurance			15,388.82	15,388.82
292 Health Savings Accounts			1,400.00	1,400.00
Total Personnel Services – Employee Benefits	\$169.96		\$34,696.96	\$34,866.92

300 Purchased Professional and Technical Services

329 Professional Educational Services – Other	17,774.57	21,631.38		39,405.95
Total Purchased Professional and Technical Services	\$17,774.57	\$21,631.38		\$39,405.95

600 Supplies

610 General Supplies		587.95		587.95
Total Supplies		\$587.95		\$587.95

Total 1260 Physical Support

	\$19,944.53	\$22,219.33	\$78,606.38	\$120,770.24
--	--------------------	--------------------	--------------------	---------------------

General Fund (10)

1270 Multi-Handicapped Support

300 Purchased Professional and Technical Services

322 Professional Educational Services – lus

Total Purchased Professional and Technical Services

500 Other Purchased Services

561 Tuition To Other School Districts Within the State

Total Other Purchased Services

Total 1270 Multi-Handicapped Support

	<u>Elementary</u>	<u>Secondary</u>	<u>Federal</u>	<u>Total</u>
	17,132.11	6,818.43	45,000.00	68,950.54
	\$17,132.11	\$6,818.43	\$45,000.00	\$68,950.54
	7,670.77	34,812.66		42,483.43
	\$7,670.77	\$34,812.66		\$42,483.43
	\$24,802.88	\$41,631.09	\$45,000.00	\$111,433.97

General Fund (10)

1280 Early Intervention Support

300 Purchased Professional and Technical Services

322 Professional Educational Services – lus

Total Purchased Professional and Technical Services

600 Supplies

610 General Supplies

Total Supplies

Total 1280 Early Intervention Support

	<u>Elementary</u>	<u>Secondary</u>	<u>Federal</u>	<u>Total</u>
	15,259.18		6,227.00	21,486.18
	\$15,259.18		\$6,227.00	\$21,486.18
	1,138.84			1,138.84
	\$1,138.84			\$1,138.84
	\$16,398.02		\$6,227.00	\$22,625.02

General Fund (10)	Elementary	Secondary	Federal	Total
1300 Vocational Education				
500 <u>Other Purchased Services</u>				
564 Tuition To Career and Technology Centers		560,806.75		560,806.75
Total Other Purchased Services		\$560,806.75		\$560,806.75
Total 1300 Vocational Education		\$560,806.75		\$560,806.75

General Fund (10)	Elementary	Secondary	Federal	Total
1400 Other Instructional Programs – Elementary / Secondary				
100 Personnel Services – Salaries				
100 Personnel Services – Salaries	14,674.60	179,882.50		194,557.10
Total Personnel Services – Salaries	\$14,674.60	\$179,882.50		\$194,557.10
200 Personnel Services – Employee Benefits				
210 Group Insurance – Contracted Provider		423.70		423.70
220 Social Security Contributions	1,099.77	13,418.99		14,518.76
230 PSERS Retirement Contributions	4,520.00	58,410.87		62,930.87
260 Workers' Compensation	124.48	1,523.82		1,648.30
270 Group Insurance – Self-Insurance		41,430.00		41,430.00
292 Health Savings Accounts		3,120.95		3,120.95
Total Personnel Services – Employee Benefits	\$5,744.25	\$118,328.33		\$124,072.58
300 Purchased Professional and Technical Services				
329 Professional Educational Services – Other		38,767.00		38,767.00
Total Purchased Professional and Technical Services		\$38,767.00		\$38,767.00
500 Other Purchased Services				
561 Tuition To Other School Districts Within the State	585.00	122,984.83		123,569.83
580 Travel	609.90	715.98		1,325.88
Total Other Purchased Services	\$1,194.90	\$123,700.81		\$124,895.71
600 Supplies				
610 General Supplies		(3,400.22)		(3,400.22)
620 Energy		115.40		115.40
630 Food		27.36		27.36
650 Supplies & Fees – Technology Related	1,421.98	11,165.29		12,587.27
Total Supplies	\$1,421.98	\$7,907.83		\$9,329.81
800 Other Objects				
810 Dues and Fees		400.00		400.00
Total Other Objects		\$400.00		\$400.00
Total 1400 Other Instructional Programs – Elementary / Secondary	\$23,035.73	\$468,986.47		\$492,022.20

General Fund (10)

1410 Drivers' Education

100 Personnel Services – Salaries

100 Personnel Services – Salaries

16,214.00

\$16,214.00

\$16,214.00

200 Personnel Services – Employee Benefits

220 Social Security Contributions

1,218.13

230 PSERS Retirement Contributions

5,280.90

260 Workers' Compensation

137.48

\$6,636.51

Total Personnel Services – Employee Benefits

600 Supplies

610 General Supplies

(3,375.22)

(3,375.22)

620 Energy

115.40

115.40

650 Supplies & Fees – Technology Related

9,496.00

9,496.00

Total Supplies

\$6,236.18

\$6,236.18

Total 1410 Drivers' Education

\$29,086.69

\$29,086.69

General Fund (10)

1420 Summer School

100 Personnel Services – Salaries

100 Personnel Services – Salaries	13,501.60	5,826.00	19,327.60
Total Personnel Services – Salaries	\$13,501.60	\$5,826.00	\$19,327.60

200 Personnel Services – Employee Benefits

220 Social Security Contributions	1,011.41	417.95	1,429.36
230 PSERS Retirement Contributions	4,137.95	1,815.43	5,953.38
260 Workers' Compensation	114.53	47.27	161.80
292 Health Savings Accounts		320.95	320.95

Total Personnel Services – Employee Benefits

Total Personnel Services – Employee Benefits	\$5,263.89	\$2,601.60	\$7,865.49
Total 1420 Summer School	\$18,765.49	\$8,427.60	\$27,193.09

General Fund (10)

1430 Homebound Instruction

100 Personnel Services – Salaries

100 Personnel Services – Salaries	1,173.00	9,024.50	10,197.50
Total Personnel Services – Salaries	\$1,173.00	\$9,024.50	\$10,197.50

200 Personnel Services – Employee Benefits

220 Social Security Contributions	88.36	661.66	750.02
230 PSERS Retirement Contributions	382.05	2,821.01	3,203.06
260 Workers' Compensation	9.95	76.53	86.48
Total Personnel Services – Employee Benefits	\$480.36	\$3,559.20	\$4,039.56

500 Other Purchased Services

580 Travel	609.90	715.98	1,325.88
Total Other Purchased Services	\$609.90	\$715.98	\$1,325.88

600 Supplies

650 Supplies & Fees – Technology Related	1,421.98	1,669.29	3,091.27
Total Supplies	\$1,421.98	\$1,669.29	\$3,091.27

Total 1430 Homebound Instruction

	\$3,685.24	\$14,968.97	\$18,654.21
--	-------------------	--------------------	--------------------

General Fund (10)

1440 Alternative Regular Education Programs

100 Personnel Services – Salaries

	Elementary	Secondary	Federal	Total
100 Personnel Services – Salaries	24,564.00			24,564.00
Total Personnel Services – Salaries	\$24,564.00			\$24,564.00

200 Personnel Services – Employee Benefits

220 Social Security Contributions		1,859.03		1,859.03
230 PSERS Retirement Contributions		8,000.46		8,000.46
260 Workers' Compensation		208.32		208.32
Total Personnel Services – Employee Benefits	\$10,067.81			\$10,067.81

300 Purchased Professional and Technical Services

329 Professional Educational Services – Other		36,990.00		36,990.00
Total Purchased Professional and Technical Services		\$36,990.00		\$36,990.00

500 Other Purchased Services

561 Tuition To Other School Districts Within the State	585.00	122,984.83		123,569.83
Total Other Purchased Services	\$585.00	\$122,984.83		\$123,569.83

600 Supplies

610 General Supplies		(25.00)		(25.00)
630 Food		27.36		27.36
Total Supplies		\$2.36		\$2.36

800 Other Objects

810 Dues and Fees		400.00		400.00
Total Other Objects		\$400.00		\$400.00

Total 1440 Alternative Regular Education Programs

	\$585.00	\$195,009.00		\$195,594.00
--	-----------------	---------------------	--	---------------------

General Fund (10)		Elementary	Secondary	Federal	Total
1441 Adjudicated / Court-Placed Programs					
500	<u>Other Purchased Services</u>				
	561 Tuition To Other School Districts Within the State		6,550.98		6,550.98
Total Other Purchased Services			\$6,550.98		\$6,550.98
Total 1441 Adjudicated / Court-Placed Programs			\$6,550.98		\$6,550.98

General Fund (10)

1442 Alternative Education Programs

100 Personnel Services – Salaries

100 Personnel Services – Salaries

	Elementary	Secondary	Federal	Total
		24,564.00		24,564.00
		\$24,564.00		\$24,564.00

200 Personnel Services – Employee Benefits

220 Social Security Contributions
 230 PSERS Retirement Contributions
 260 Workers' Compensation

	Elementary	Secondary	Federal	Total
		1,859.03		1,859.03
		8,000.46		8,000.46
		208.32		208.32
		\$10,067.81		\$10,067.81

Total Personnel Services – Employee Benefits

300 Purchased Professional and Technical Services

329 Professional Educational Services – Other

	Elementary	Secondary	Federal	Total
		36,990.00		36,990.00
		\$36,990.00		\$36,990.00

Total Purchased Professional and Technical Services

500 Other Purchased Services

561 Tuition To Other School Districts Within the State

	Elementary	Secondary	Federal	Total
	585.00	116,433.85		117,018.85
	\$585.00	\$116,433.85		\$117,018.85

Total Other Purchased Services

600 Supplies

610 General Supplies
 630 Food

	Elementary	Secondary	Federal	Total
		(25.00)		(25.00)
		27.36		27.36
		\$2.36		\$2.36

Total Supplies

800 Other Objects

810 Dues and Fees

	Elementary	Secondary	Federal	Total
		400.00		400.00
		\$400.00		\$400.00

Total Other Objects

Total 1442 Alternative Education Programs

	Elementary	Secondary	Federal	Total
	\$585.00	\$188,458.02		\$189,043.02

General Fund (10)

1490 Additional Other Instructional Programs

100 Personnel Services – Salaries

	Elementary	Secondary	Federal	Total
100 Personnel Services – Salaries		124,254.00		124,254.00
Total Personnel Services – Salaries		\$124,254.00		\$124,254.00

200 Personnel Services – Employee Benefits

210 Group Insurance – Contracted Provider		423.70		423.70
220 Social Security Contributions		9,262.22		9,262.22
230 PSERS Retirement Contributions		40,493.07		40,493.07
260 Workers' Compensation		1,054.22		1,054.22
270 Group Insurance – Self-Insurance		41,430.00		41,430.00
292 Health Savings Accounts		2,800.00		2,800.00
Total Personnel Services – Employee Benefits		\$95,463.21		\$95,463.21

300 Purchased Professional and Technical Services

329 Professional Educational Services – Other		1,777.00		1,777.00
Total Purchased Professional and Technical Services		\$1,777.00		\$1,777.00

Total 1490 Additional Other Instructional Programs

		\$221,494.21		\$221,494.21
--	--	---------------------	--	---------------------

	<u>Elementary</u>	<u>Secondary</u>	<u>Federal</u>	<u>Total</u>
General Fund (10)				
1800 Pre-Kindergarten				
800 <u>Other Objects</u>				
890 Miscellaneous Expenditures				306,000.00
Total Other Objects				\$306,000.00
Total 1800 Pre-Kindergarten				\$306,000.00

General Fund (10)		Elementary	Secondary	Federal	Total
1807 Pre-K Pass-Through Funds (Partners)					
800 <u>Other Objects</u>	890 Miscellaneous Expenditures				306,000.00
Total Other Objects					\$306,000.00
Total 1807 Pre-K Pass-Through Funds (Partners)					\$306,000.00

General Fund (10)

2000 Support Services

100 Personnel Services – Salaries

100 Personnel Services – Salaries

3,955,492.37

Total Personnel Services – Salaries

\$3,955,492.37

Total

200 Personnel Services – Employee Benefits

210 Group Insurance – Contracted Provider

17,407.11

220 Social Security Contributions

293,830.04

230 PSERS Retirement Contributions

1,250,168.06

240 Tuition Reimbursement

198,397.94

250 Unemployment Compensation

33,392.08

260 Workers' Compensation

892,297.80

270 Group Insurance – Self-Insurance

76,965.74

292 Health Savings Accounts

76,965.74

Total Personnel Services – Employee Benefits

\$2,762,458.77

300 Purchased Professional and Technical Services

322 Professional Educational Services – Ius

161,547.68

323 Professional Educational Services – Other Educational Agencies

8,067.00

324 Professional Educational Services – Employee Training and Development Services

68,963.23

329 Professional Educational Services – Other

434,412.77

330 Other Professional Services

265,648.98

340 Technical Services

23,772.84

Total Purchased Professional and Technical Services

\$962,412.50

400 Purchased Property Services

410 Cleaning Services

71,745.27

420 Utility Services

96,634.23

430 Repairs and Maintenance Services

179,495.79

440 Rentals

61,989.60

460 Extermination Services

9,767.30

490 Other Purchased Property Services

9,968.00

Total Purchased Property Services

\$429,600.19

500 Other Purchased Services

513 Contracted Carriers

1,878,001.54

520 Insurance – General

18,531.00

522 Automotive Liability Insurance

986.00

523 General Property and Liability Insurance

(350.00)

529 Other Insurance

86,772.00

530 Communications

63,876.52

549 Other Advertising/Public Relations

5,996.95

550 Printing and Binding

1,522.00

580 Travel

39,692.44

595 IU Payments By Withholding

22,127.15

Total Other Purchased Services

\$2,117,155.60

600 Supplies

610 General Supplies

454,481.99

620 Energy

846,795.60

	<u>Total</u>
General Fund (10)	
2000 Support Services	
600 Supplies	
630 Food	5,381.67
640 Books and Periodicals	24,968.83
650 Supplies & Fees – Technology Related	129,016.23
Total Supplies	\$1,460,644.32
700 Property	
752 Capital Equipment – Original and Additional	127,758.91
756 Capitalized Technology Hardware and Equipment – Original	15,397.50
Total Property	\$143,156.41
800 Other Objects	
810 Dues and Fees	49,247.44
820 Claims and Judgments Against the LEA	25,790.71
Total Other Objects	\$75,038.15
Total 2000 Support Services	\$11,905,958.31

General Fund (10)

2100 Support Services – Students

100 Personnel Services – Salaries

	Elementary	Secondary	Federal	Total
100 Personnel Services – Salaries	22,893.44	337,351.74		568,617.00
Total Personnel Services – Salaries	\$22,893.44	\$337,351.74		\$568,617.00

200 Personnel Services – Employee Benefits

210 Group Insurance – Contracted Provider	78.12	1,292.60		2,253.74
220 Social Security Contributions	1,705.08	24,834.40		42,081.65
230 PSERS Retirement Contributions	7,456.51	109,875.65		185,198.91
260 Workers' Compensation	194.21	2,860.77		4,821.73
270 Group Insurance – Self-Insurance	6,839.20	98,431.46		182,679.44
292 Health Savings Accounts	462.00	7,938.00		14,000.00
Total Personnel Services – Employee Benefits	\$16,735.12	\$245,232.88		\$431,035.47

300 Purchased Professional and Technical Services

322 Professional Educational Services – Ius		3,334.87	17,300.31	20,635.18
324 Professional Educational Services – Employee Training and Development Services	2,208.00	2,592.00		8,665.00
329 Professional Educational Services – Other	87,014.18	102,147.07		189,748.20
330 Other Professional Services				8,946.90
Total Purchased Professional and Technical Services	\$89,222.18	\$108,073.94	\$17,300.31	\$227,995.28

500 Other Purchased Services

580 Travel				3,426.47
Total Other Purchased Services				\$3,426.47

600 Supplies

610 General Supplies	1,694.44	3,269.53		6,373.15
640 Books and Periodicals		471.97		954.47
Total Supplies	\$1,694.44	\$3,741.50		\$7,327.62

800 Other Objects

810 Dues and Fees				175.00
-------------------	--	--	--	--------

Total Other Objects

Total Other Objects				\$175.00
----------------------------	--	--	--	-----------------

Total 2100 Support Services – Students

Total 2100 Support Services – Students	\$130,545.18	\$694,400.06	\$17,300.31	\$1,238,576.84
---	---------------------	---------------------	--------------------	-----------------------

General Fund (10)

2120 Guidance Services

100 Personnel Services – Salaries

100 Personnel Services – Salaries	22,893.44	222,785.34		245,678.78
Total Personnel Services – Salaries	\$22,893.44	\$222,785.34		\$245,678.78

200 Personnel Services – Employee Benefits

210 Group Insurance – Contracted Provider	78.12	640.62		718.74
220 Social Security Contributions	1,705.08	16,370.28		18,075.36
230 PSERS Retirement Contributions	7,456.51	72,561.23		80,017.74
260 Workers' Compensation	194.21	1,889.15		2,083.36
270 Group Insurance – Self-Insurance	6,839.20	62,333.30		69,172.50
292 Health Savings Accounts	462.00	5,138.00		5,600.00
Total Personnel Services – Employee Benefits	\$16,735.12	\$158,932.58		\$175,667.70

600 Supplies

610 General Supplies	268.00	1,996.03		2,264.03
----------------------	--------	----------	--	----------

Total Supplies

Total Supplies	\$268.00	\$1,996.03		\$2,264.03
-----------------------	-----------------	-------------------	--	-------------------

Total 2120 Guidance Services

Total 2120 Guidance Services	\$39,896.56	\$383,713.95		\$423,610.51
-------------------------------------	--------------------	---------------------	--	---------------------

General Fund (10)

2140 Psychological Services

100 Personnel Services – Salaries

100 Personnel Services – Salaries	Elementary	Secondary	Federal	Total
		114,566.40		114,566.40
Total Personnel Services – Salaries		\$114,566.40		\$114,566.40

200 Personnel Services – Employee Benefits

210 Group Insurance – Contracted Provider		651.98		651.98
220 Social Security Contributions		8,464.12		8,464.12
230 PSERS Retirement Contributions		37,314.42		37,314.42
260 Workers' Compensation		971.62		971.62
270 Group Insurance – Self-Insurance		36,098.16		36,098.16
292 Health Savings Accounts		2,800.00		2,800.00
Total Personnel Services – Employee Benefits		\$86,300.30		\$86,300.30

300 Purchased Professional and Technical Services

322 Professional Educational Services – Ius			17,300.31	17,300.31
324 Professional Educational Services – Employee Training and Development Services	2,208.00	2,592.00		4,800.00
Total Purchased Professional and Technical Services	\$2,208.00	\$2,592.00	\$17,300.31	\$22,100.31

600 Supplies

610 General Supplies	339.60	1,205.96		1,545.56
640 Books and Periodicals		471.97		471.97
Total Supplies	\$339.60	\$1,677.93		\$2,017.53

Total 2140 Psychological Services

	\$2,547.60	\$205,136.63	\$17,300.31	\$224,984.54
--	-------------------	---------------------	--------------------	---------------------

General Fund (10)

2150 Speech Pathology and Audiology Services

300 Purchased Professional and Technical Services

322 Professional Educational Services – Ius
 329 Professional Educational Services – Other

	<u>Elementary</u>	<u>Secondary</u>	<u>Federal</u>	<u>Total</u>
Total Purchased Professional and Technical Services	\$87,014.18	\$105,481.94		\$192,496.12

600 Supplies

610 General Supplies

	1,086.84	67.54		1,154.38
Total Supplies	\$1,086.84	\$67.54		\$1,154.38

Total 2150 Speech Pathology and Audiology Services

	\$88,101.02	\$105,549.48		\$193,650.50
--	-------------	--------------	--	--------------

General Fund (10)

2160 Social Work Services

100 Personnel Services – Salaries

100 Personnel Services – Salaries

Total Personnel Services – Salaries 176,171.00 **\$176,171.00**

200 Personnel Services – Employee Benefits

210 Group Insurance – Contracted Provider

220 Social Security Contributions

230 PSERS Retirement Contributions

260 Workers' Compensation

270 Group Insurance – Self-Insurance

292 Health Savings Accounts

Total Personnel Services – Employee Benefits 703.38 13,158.88 57,379.03 1,493.71 56,800.30 4,200.00 **\$133,735.30**

300 Purchased Professional and Technical Services

324 Professional Educational Services – Employee Training and Development Services

330 Other Professional Services

Total Purchased Professional and Technical Services 3,275.00 8,946.90 **\$12,221.90**

500 Other Purchased Services

580 Travel

Total Other Purchased Services 2,944.79 **\$2,944.79**

600 Supplies

610 General Supplies

640 Books and Periodicals

Total Supplies 1,145.64 482.50 **\$1,628.14**

Total 2160 Social Work Services

\$326,701.13

General Fund (10)

2170 Student Accounting Services

100 Personnel Services – Salaries

100 Personnel Services – Salaries						32,200.82
Total Personnel Services – Salaries						\$32,200.82

200 Personnel Services – Employee Benefits

210 Group Insurance – Contracted Provider						179.64
220 Social Security Contributions						2,383.29
230 PSERS Retirement Contributions						10,487.72
260 Workers' Compensation						273.04
270 Group Insurance – Self-Insurance						20,608.48
292 Health Savings Accounts						1,400.00
Total Personnel Services – Employee Benefits						\$35,332.17

300 Purchased Professional and Technical Services

324 Professional Educational Services – Employee Training and Development Services						590.00
329 Professional Educational Services – Other						586.95
Total Purchased Professional and Technical Services						\$1,176.95

500 Other Purchased Services

580 Travel						481.68
Total Other Purchased Services						\$481.68

600 Supplies

610 General Supplies						263.54
Total Supplies						\$263.54

800 Other Objects

810 Dues and Fees						175.00
Total Other Objects						\$175.00

Total 2170 Student Accounting Services

						\$69,630.16
--	--	--	--	--	--	--------------------

General Fund (10)

2200 Support Services – Instructional Staff

100 Personnel Services – Salaries

	Elementary	Secondary	Federal	Total
100 Personnel Services – Salaries	370,735.87	258,179.58	6,428.50	635,343.95
Total Personnel Services – Salaries	\$370,735.87	\$258,179.58	\$6,428.50	\$635,343.95

200 Personnel Services – Employee Benefits

210 Group Insurance – Contracted Provider	998.20	1,018.60		2,016.80
220 Social Security Contributions	27,903.81	19,172.22	481.46	47,557.49
230 PSERS Retirement Contributions	119,634.51	83,623.51	2,093.73	205,351.75
240 Tuition Reimbursement	81,861.48	116,536.46		198,397.94
250 Unemployment Compensation			3.50	3.50
260 Workers' Compensation	3,148.57	2,193.08	58.33	5,399.98
270 Group Insurance – Self-Insurance	49,303.04	60,773.49		110,076.53
292 Health Savings Accounts	3,822.11	4,685.06		8,507.17
Total Personnel Services – Employee Benefits	\$286,671.72	\$288,002.42	\$2,637.02	\$577,311.16

300 Purchased Professional and Technical Services

324 Professional Educational Services – Employee Training and Development Services	717.60	1,192.40	42,657.57	44,567.57
329 Professional Educational Services – Other	4,211.85	180.60	18,321.22	22,713.67
330 Other Professional Services	2,484.00	2,916.00		5,400.00
340 Technical Services	2,796.91	3,283.33		6,080.24
Total Purchased Professional and Technical Services	\$10,210.36	\$7,572.33	\$60,978.79	\$78,761.48

400 Purchased Property Services

430 Repairs and Maintenance Services	2,190.89	2,571.92		4,762.81
Total Purchased Property Services	\$2,190.89	\$2,571.92		\$4,762.81

500 Other Purchased Services

530 Communications		147.00		147.00
580 Travel	1,966.35	4,330.70	11,935.99	18,233.04
Total Other Purchased Services	\$1,966.35	\$4,477.70	\$11,935.99	\$18,380.04

600 Supplies

610 General Supplies	2,915.87	3,543.13	3,317.90	9,776.90
630 Food	115.78	135.91		251.69
640 Books and Periodicals	20,732.75	910.10	1,306.44	22,949.29
650 Supplies & Fees – Technology Related	9,467.92	36,695.33		46,163.25
Total Supplies	\$33,232.32	\$41,284.47	\$4,624.34	\$79,141.13

800 Other Objects

810 Dues and Fees		825.00		825.00
-------------------	--	--------	--	--------

Total Other Objects

Total Other Objects		\$825.00		\$825.00
----------------------------	--	-----------------	--	-----------------

Total 2200 Support Services – Instructional Staff

Total 2200 Support Services – Instructional Staff	\$705,007.51	\$602,913.42	\$86,604.64	\$1,394,525.57
--	---------------------	---------------------	--------------------	-----------------------

General Fund (10)

2210 Supervision of Educational Media Services

100 Personnel Services – Salaries

	Elementary	Secondary	Federal	Total
100 Personnel Services – Salaries	5,453.87	6,402.37		11,856.24
Total Personnel Services – Salaries	\$5,453.87	\$6,402.37		\$11,856.24

200 Personnel Services – Employee Benefits

220 Social Security Contributions	407.28	478.11		885.39
230 PSERS Retirement Contributions	1,776.32	2,085.25		3,861.57
260 Workers' Compensation	46.24	54.29		100.53

Total Personnel Services – Employee Benefits

Total Personnel Services – Employee Benefits	\$2,229.84	\$2,617.65		\$4,847.49
---	-------------------	-------------------	--	-------------------

Total 2210 Supervision of Educational Media Services

Total 2210 Supervision of Educational Media Services	\$7,683.71	\$9,020.02		\$16,703.73
---	-------------------	-------------------	--	--------------------

General Fund (10)

2211 Supervision of Educational Media Services – Head of Component

	<u>Elementary</u>	<u>Secondary</u>	<u>Federal</u>	<u>Total</u>
100 Personnel Services – Salaries				
100 Personnel Services – Salaries	5,453.87	6,402.37		11,856.24
Total Personnel Services – Salaries	\$5,453.87	\$6,402.37		\$11,856.24
200 Personnel Services – Employee Benefits				
220 Social Security Contributions	407.28	478.11		885.39
230 PSERS Retirement Contributions	1,776.32	2,085.25		3,861.57
260 Workers' Compensation	46.24	54.29		100.53
Total Personnel Services – Employee Benefits	\$2,229.84	\$2,617.65		\$4,847.49
Total 2211 Supervision of Educational Media Services – Head of Component	\$7,683.71	\$9,020.02		\$16,703.73

General Fund (10)

2220 Technology Support Services

100 Personnel Services – Salaries

	Elementary	Secondary	Federal	Total
100 Personnel Services – Salaries	2,458.89	3,746.50		6,205.39
Total Personnel Services – Salaries	\$2,458.89	\$3,746.50		\$6,205.39

200 Personnel Services – Employee Benefits

220 Social Security Contributions	186.02	278.38		464.40
230 PSERS Retirement Contributions	800.86	1,220.24		2,021.10
260 Workers' Compensation	20.84	31.76		52.60
Total Personnel Services – Employee Benefits	\$1,007.72	\$1,530.38		\$2,538.10

300 Purchased Professional and Technical Services

340 Technical Services	2,796.91	3,283.33		6,080.24
Total Purchased Professional and Technical Services	\$2,796.91	\$3,283.33		\$6,080.24

400 Purchased Property Services

430 Repairs and Maintenance Services	2,190.89	2,571.92		4,762.81
Total Purchased Property Services	\$2,190.89	\$2,571.92		\$4,762.81

500 Other Purchased Services

580 Travel	1,504.60	1,766.28		3,270.88
Total Other Purchased Services	\$1,504.60	\$1,766.28		\$3,270.88

600 Supplies

610 General Supplies	(152.95)	(179.55)		(332.50)
650 Supplies & Fees – Technology Related	967.38	24,785.62		25,753.00
Total Supplies	\$814.43	\$24,606.07		\$25,420.50

Total 2220 Technology Support Services

	\$10,773.44	\$37,504.48		\$48,277.92
--	--------------------	--------------------	--	--------------------

General Fund (10)

2250 School Library Services

100 Personnel Services – Salaries

100 Personnel Services – Salaries	219,702.45	80,726.89	300,429.34
Total Personnel Services – Salaries	\$219,702.45	\$80,726.89	\$300,429.34

200 Personnel Services – Employee Benefits

210 Group Insurance – Contracted Provider	399.63	374.97	774.60
220 Social Security Contributions	16,561.24	5,855.95	22,417.19
230 PSERS Retirement Contributions	70,539.68	26,292.62	96,832.30
260 Workers' Compensation	1,862.96	684.60	2,547.56
270 Group Insurance – Self-Insurance	30,910.22	33,934.86	64,845.08
292 Health Savings Accounts	2,200.65	2,081.61	4,282.26
Total Personnel Services – Employee Benefits	\$122,474.38	\$69,224.61	\$191,698.99

300 Purchased Professional and Technical Services

329 Professional Educational Services – Other	4,211.85	180.60	4,392.45
Total Purchased Professional and Technical Services	\$4,211.85	\$180.60	\$4,392.45

600 Supplies

640 Books and Periodicals	3,399.88	842.57	4,242.45
650 Supplies & Fees – Technology Related	8,500.54	11,909.71	20,410.25
Total Supplies	\$11,900.42	\$12,752.28	\$24,652.70

Total 2250 School Library Services

Total 2250 School Library Services	\$358,289.10	\$162,884.38	\$521,173.48
---	---------------------	---------------------	---------------------

General Fund (10)

2260 Instruction and Curriculum Development Services

100 Personnel Services – Salaries

	Elementary	Secondary	Federal	Total
100 Personnel Services – Salaries	131,895.96	154,126.98		286,022.94
Total Personnel Services – Salaries	\$131,895.96	\$154,126.98		\$286,022.94

200 Personnel Services – Employee Benefits

210 Group Insurance – Contracted Provider	598.57	643.63		1,242.20
220 Social Security Contributions	9,886.22	11,546.64		21,432.86
230 PSERS Retirement Contributions	42,837.50	49,705.23		92,542.73
260 Workers' Compensation	1,120.87	1,307.79		2,428.66
270 Group Insurance – Self-Insurance	18,392.82	26,838.63		45,231.45
292 Health Savings Accounts	1,288.00	2,212.00		3,500.00
Total Personnel Services – Employee Benefits	\$74,123.98	\$92,253.92		\$166,377.90

300 Purchased Professional and Technical Services

324 Professional Educational Services – Employee Training and Development Services	327.52	384.48		712.00
Total Purchased Professional and Technical Services	\$327.52	\$384.48		\$712.00

500 Other Purchased Services

530 Communications		147.00		147.00
580 Travel	141.83	2,188.88	1,207.06	3,537.77
Total Other Purchased Services	\$141.83	\$2,335.88	\$1,207.06	\$3,684.77

600 Supplies

610 General Supplies	120.05	261.08		381.13
640 Books and Periodicals	11,545.68			11,545.68
Total Supplies	\$11,665.73	\$261.08		\$11,926.81

800 Other Objects

810 Dues and Fees		825.00		825.00
Total Other Objects		\$825.00		\$825.00

Total 2260 Instruction and Curriculum Development Services

	\$218,155.02	\$250,187.34	\$1,207.06	\$469,549.42
--	---------------------	---------------------	-------------------	---------------------

General Fund (10)

2270 Instructional Staff Professional Development Services

100 Personnel Services – Salaries

	Elementary	Secondary	Federal	Total
100 Personnel Services – Salaries	11,224.70	13,176.84	6,428.50	30,830.04
Total Personnel Services – Salaries	\$11,224.70	\$13,176.84	\$6,428.50	\$30,830.04

200 Personnel Services – Employee Benefits

220 Social Security Contributions	863.05	1,013.14	481.46	2,357.65
230 PSERS Retirement Contributions	3,680.15	4,320.17	2,093.73	10,094.05
240 Tuition Reimbursement	81,861.48	116,536.46		198,397.94
250 Unemployment Compensation			3.50	3.50
260 Workers' Compensation	97.66	114.64	58.33	270.63
292 Health Savings Accounts	333.46	391.45		724.91
Total Personnel Services – Employee Benefits	\$86,835.80	\$122,375.86	\$2,637.02	\$211,848.68

300 Purchased Professional and Technical Services

324 Professional Educational Services – Employee Training and Development Services	390.08	807.92	42,657.57	43,855.57
329 Professional Educational Services – Other			18,321.22	18,321.22
330 Other Professional Services	2,484.00	2,916.00		5,400.00
Total Purchased Professional and Technical Services	\$2,874.08	\$3,723.92	\$60,978.79	\$67,576.79

500 Other Purchased Services

580 Travel	319.92	375.54	10,728.93	11,424.39
Total Other Purchased Services	\$319.92	\$375.54	\$10,728.93	\$11,424.39

600 Supplies

610 General Supplies	2,948.77	3,461.60	3,317.90	9,728.27
630 Food	115.78	135.91		251.69
640 Books and Periodicals	5,787.19	67.53	1,306.44	7,161.16
Total Supplies	\$8,851.74	\$3,665.04	\$4,624.34	\$17,141.12

Total 2270 Instructional Staff Professional Development Services

	\$110,106.24	\$143,317.20	\$85,397.58	\$338,821.02
--	---------------------	---------------------	--------------------	---------------------

General Fund (10)

2300 Support Services – Administration

100 Personnel Services – Salaries

	Elementary	Secondary	Federal	Total
100 Personnel Services – Salaries	356,050.03	451,218.91		1,018,834.54
Total Personnel Services – Salaries	\$356,050.03	\$451,218.91		\$1,018,834.54

200 Personnel Services – Employee Benefits

210 Group Insurance – Contracted Provider	1,766.41	2,309.91		4,948.75
220 Social Security Contributions	26,385.97	34,141.40		76,393.64
230 PSERS Retirement Contributions	115,138.23	145,822.16		320,608.15
260 Workers' Compensation	3,019.30	3,826.24		8,639.71
270 Group Insurance – Self-Insurance	73,077.57	72,207.25		169,080.48
292 Health Savings Accounts	6,262.39	4,900.00		13,262.39
Total Personnel Services – Employee Benefits	\$225,649.87	\$263,206.96		\$592,933.12

300 Purchased Professional and Technical Services

323 Professional Educational Services – Other Educational Agencies			8,067.00	8,067.00
324 Professional Educational Services – Employee Training and Development Services			809.00	809.00
329 Professional Educational Services – Other	38,903.28	53,513.34		92,416.62
330 Other Professional Services			174,553.53	174,553.53
Total Purchased Professional and Technical Services	\$38,903.28	\$53,513.34		\$275,846.15

400 Purchased Property Services

440 Rentals		2,285.75		2,285.75
Total Purchased Property Services		\$2,285.75		\$2,285.75

500 Other Purchased Services

520 Insurance – General			10,443.00	10,443.00
549 Other Advertising/Public Relations		10,551.22		5,996.95
550 Printing and Binding		1,578.34		1,522.00
580 Travel	1,465.62	24.27		6,694.50
Total Other Purchased Services	\$1,465.62	\$24.27		\$24,656.45

600 Supplies

610 General Supplies	10,161.21			31,526.39
630 Food	536.09	1,578.34		4,236.04
640 Books and Periodicals		35.28		693.39
Total Supplies	\$10,697.30	\$12,164.84		\$36,455.82

800 Other Objects

810 Dues and Fees	690.00	2,744.71		44,405.96
Total Other Objects	\$690.00	\$2,744.71		\$44,405.96
Total 2300 Support Services – Administration	\$633,456.10	\$785,158.78		\$1,995,417.79

General Fund (10)

2310 Board Services

100 Personnel Services – Salaries

100 Personnel Services – Salaries					18,941.21
Total Personnel Services – Salaries					\$18,941.21

200 Personnel Services – Employee Benefits

210 Group Insurance – Contracted Provider					54.00
220 Social Security Contributions					1,385.49
230 PSERS Retirement Contributions					6,169.21
260 Workers' Compensation					160.58
270 Group Insurance – Self-Insurance					4,841.66
292 Health Savings Accounts					420.00
Total Personnel Services – Employee Benefits					\$13,030.94

300 Purchased Professional and Technical Services

323 Professional Educational Services – Other Educational Agencies					8,067.00
324 Professional Educational Services – Employee Training and Development Services					510.00
Total Purchased Professional and Technical Services					\$8,577.00

500 Other Purchased Services

520 Insurance – General					245.00
549 Other Advertising/Public Relations					5,996.95
550 Printing and Binding					1,522.00
580 Travel					2,841.86
Total Other Purchased Services					\$10,605.81

600 Supplies

610 General Supplies					3,117.51
630 Food					209.28
Total Supplies					\$3,326.79

800 Other Objects

810 Dues and Fees					12,441.48
Total Other Objects					\$12,441.48

Total 2310 Board Services

Total 2310 Board Services					\$66,923.23
----------------------------------	--	--	--	--	--------------------

	<u>Elementary</u>	<u>Secondary</u>	<u>Federal</u>	<u>Total</u>
General Fund (10)				
2330 Tax Assessment and Collection Services				
100 Personnel Services – Salaries				
100 Personnel Services – Salaries				26,928.00
Total Personnel Services – Salaries				\$26,928.00
200 Personnel Services – Employee Benefits				
220 Social Security Contributions				2,060.03
260 Workers' Compensation				228.39
Total Personnel Services – Employee Benefits				\$2,288.42
300 Purchased Professional and Technical Services				
330 Other Professional Services				105,981.99
Total Purchased Professional and Technical Services				\$105,981.99
500 Other Purchased Services				
520 Insurance – General				10,198.00
Total Other Purchased Services				\$10,198.00
600 Supplies				
610 General Supplies				7,637.03
Total Supplies				\$7,637.03
Total 2330 Tax Assessment and Collection Services				\$153,033.44

	<u>Elementary</u>	<u>Secondary</u>	<u>Federal</u>	<u>Total</u>
General Fund (10)				
2340 Staff Relations and Negotiations Services				
300 <u>Purchased Professional and Technical Services</u>				
330 Other Professional Services				9,955.04
Total Purchased Professional and Technical Services				\$9,955.04
Total 2340 Staff Relations and Negotiations Services				\$9,955.04

	<u>Elementary</u>	<u>Secondary</u>	<u>Federal</u>	<u>Total</u>
General Fund (10)				
2350 Legal and Accounting Services				
300 <u>Purchased Professional and Technical Services</u>				
330 Other Professional Services				58,116.50
Total Purchased Professional and Technical Services				\$58,116.50
Total 2350 Legal and Accounting Services				\$58,116.50

General Fund (10)

2360 Office of the Superintendent / Executive Director Services

100 Personnel Services – Salaries

100 Personnel Services – Salaries					165,696.39
Total Personnel Services – Salaries					\$165,696.39

200 Personnel Services – Employee Benefits

210 Group Insurance – Contracted Provider					818.43
220 Social Security Contributions					12,420.75
230 PSERS Retirement Contributions					53,478.55
260 Workers' Compensation					1,405.20
270 Group Insurance – Self-Insurance					18,954.00
292 Health Savings Accounts					1,680.00
Total Personnel Services – Employee Benefits					\$88,756.93

300 Purchased Professional and Technical Services

324 Professional Educational Services – Employee Training and Development Services					299.00
330 Other Professional Services					500.00
Total Purchased Professional and Technical Services					\$799.00

500 Other Purchased Services

580 Travel					2,362.75
Total Other Purchased Services					\$2,362.75

600 Supplies

610 General Supplies					59.42
630 Food					1,912.33
640 Books and Periodicals					658.11
Total Supplies					\$2,629.86

800 Other Objects

810 Dues and Fees					4,541.00
Total Other Objects					\$4,541.00

Total 2360 Office of the Superintendent / Executive Director Services

					\$264,785.93
--	--	--	--	--	---------------------

General Fund (10)

2380 Office of the Principal Services

100 Personnel Services – Salaries

	Elementary	Secondary	Federal	Total
100 Personnel Services – Salaries	356,050.03	451,218.91		807,268.94
Total Personnel Services – Salaries	\$356,050.03	\$451,218.91		\$807,268.94

200 Personnel Services – Employee Benefits

210 Group Insurance – Contracted Provider	1,766.41	2,309.91		4,076.32
220 Social Security Contributions	26,385.97	34,141.40		60,527.37
230 PSERS Retirement Contributions	115,138.23	145,822.16		260,960.39
260 Workers' Compensation	3,019.30	3,826.24		6,845.54
270 Group Insurance – Self-Insurance	73,077.57	72,207.25		145,284.82
292 Health Savings Accounts	6,262.39	4,900.00		11,162.39
Total Personnel Services – Employee Benefits	\$225,649.87	\$263,206.96		\$488,856.83

300 Purchased Professional and Technical Services

329 Professional Educational Services – Other	38,903.28	53,513.34		92,416.62
Total Purchased Professional and Technical Services	\$38,903.28	\$53,513.34		\$92,416.62

400 Purchased Property Services

440 Rentals		2,285.75		2,285.75
Total Purchased Property Services		\$2,285.75		\$2,285.75

500 Other Purchased Services

580 Travel	1,465.62	24.27		1,489.89
Total Other Purchased Services	\$1,465.62	\$24.27		\$1,489.89

600 Supplies

610 General Supplies	10,161.21	10,551.22		20,712.43
630 Food	536.09	1,578.34		2,114.43
640 Books and Periodicals		35.28		35.28
Total Supplies	\$10,697.30	\$12,164.84		\$22,862.14

800 Other Objects

810 Dues and Fees	690.00	2,744.71		3,434.71
Total Other Objects	\$690.00	\$2,744.71		\$3,434.71
Total 2380 Office of the Principal Services	\$633,456.10	\$785,158.78		\$1,418,614.88

	<u>Elementary</u>	<u>Secondary</u>	<u>Federal</u>	<u>Total</u>
General Fund (10)				
2390 Other Administration Services				
800 <u>Other Objects</u>				
810 Dues and Fees				23,988.77
Total Other Objects				\$23,988.77
Total 2390 Other Administration Services				\$23,988.77

General Fund (10)

2400 Support Services – Pupil Health

100 Personnel Services – Salaries

100 Personnel Services – Salaries

264,422.71
\$264,422.71

200 Personnel Services – Employee Benefits

- 210 Group Insurance – Contracted Provider
- 220 Social Security Contributions
- 230 PSERS Retirement Contributions
- 250 Unemployment Compensation
- 260 Workers' Compensation
- 270 Group Insurance – Self-Insurance
- 292 Health Savings Accounts

1,550.24
 19,751.34
 82,129.37
 (3.50)
 2,242.25
 73,975.40
 4,200.00

Total Personnel Services – Employee Benefits

\$183,845.10

300 Purchased Professional and Technical Services

- 322 Professional Educational Services – Ius
- 330 Other Professional Services

140,912.50
 225.00

Total Purchased Professional and Technical Services

\$141,137.50

400 Purchased Property Services

- 430 Repairs and Maintenance Services

400.00

Total Purchased Property Services

\$400.00

500 Other Purchased Services

- 580 Travel

627.87

Total Other Purchased Services

\$627.87

600 Supplies

- 610 General Supplies

3,947.87

Total Supplies

\$3,947.87

Total 2400 Support Services – Pupil Health

\$594,381.05

General Fund (10)		Elementary	Secondary	Federal	Total
2410 Supervision of Health Services					
500	<u>Other Purchased Services</u>				
	580 Travel				432.59
Total Other Purchased Services					\$432.59
600	<u>Supplies</u>				
	610 General Supplies				30.96
Total Supplies					\$30.96
Total 2410 Supervision of Health Services					\$463.55

General Fund (10)		Elementary	Secondary	Federal	Total
2411 Supervision of Health Services – Head of Component					
600	<u>Supplies</u>				
	610 General Supplies				30.96
Total Supplies					\$30.96
Total 2411 Supervision of Health Services – Head of Component					\$30.96

General Fund (10)

2419 Supervision of Health Services – All Other Supervision

500 Other Purchased Services

580 Travel

	<u>Elementary</u>	<u>Secondary</u>	<u>Federal</u>	<u>Total</u>
				432.59
Total Other Purchased Services				\$432.59
Total 2419 Supervision of Health Services – All Other Supervision				\$432.59

	Elementary	Secondary	Federal	Total
General Fund (10)				
2420 Medical Services				
100 Personnel Services – Salaries				
100 Personnel Services – Salaries				264,422.71
Total Personnel Services – Salaries				\$264,422.71
200 Personnel Services – Employee Benefits				
210 Group Insurance – Contracted Provider				1,550.24
220 Social Security Contributions				19,751.34
230 PSERS Retirement Contributions				82,129.37
250 Unemployment Compensation				(3.50)
260 Workers' Compensation				2,242.25
270 Group Insurance – Self-Insurance				73,975.40
292 Health Savings Accounts				4,200.00
Total Personnel Services – Employee Benefits				\$183,845.10
300 Purchased Professional and Technical Services				
322 Professional Educational Services – Ius			91,000.00	140,912.50
330 Other Professional Services				225.00
Total Purchased Professional and Technical Services			\$91,000.00	\$141,137.50
400 Purchased Property Services				
430 Repairs and Maintenance Services				400.00
Total Purchased Property Services				\$400.00
500 Other Purchased Services				
580 Travel				195.28
Total Other Purchased Services				\$195.28
600 Supplies				
610 General Supplies				3,707.99
Total Supplies				\$3,707.99
Total 2420 Medical Services			\$91,000.00	\$593,708.58

	<u>Elementary</u>	<u>Secondary</u>	<u>Federal</u>	<u>Total</u>
General Fund (10)				
2430 Dental Services				
600 <u>Supplies</u>				
610 General Supplies				208.92
Total Supplies				\$208.92
Total 2430 Dental Services				\$208.92

General Fund (10)

2500 Support Services – Business

100 Personnel Services – Salaries

100 Personnel Services – Salaries

234,393.51
\$234,393.51

Elementary **Secondary** **Federal** **Total**

200 Personnel Services – Employee Benefits

210 Group Insurance – Contracted Provider

997.20

220 Social Security Contributions

16,964.08

230 PSERS Retirement Contributions

73,059.84

260 Workers' Compensation

1,924.15

270 Group Insurance – Self-Insurance

46,986.56

292 Health Savings Accounts

3,755.14

Total Personnel Services – Employee Benefits

\$143,686.97

300 Purchased Professional and Technical Services

324 Professional Educational Services – Employee Training and Development Services

2,253.10

330 Other Professional Services

62,994.88

Total Purchased Professional and Technical Services

\$65,247.98

400 Purchased Property Services

440 Rentals

1,335.13

Total Purchased Property Services

\$1,335.13

500 Other Purchased Services

530 Communications

2,643.04

580 Travel

4,371.50

Total Other Purchased Services

\$7,014.54

600 Supplies

610 General Supplies

28,165.65

Total Supplies

\$28,165.65

800 Other Objects

810 Dues and Fees

1,867.35

820 Claims and Judgments Against the LEA

25,790.71

Total Other Objects

\$27,658.06

Total 2500 Support Services – Business

\$507,501.84

General Fund (10)

2510 Fiscal Services

100 Personnel Services – Salaries

100 Personnel Services – Salaries					231,727.92
Total Personnel Services – Salaries					\$231,727.92

200 Personnel Services – Employee Benefits

210 Group Insurance – Contracted Provider					997.20
220 Social Security Contributions					16,760.12
230 PSERS Retirement Contributions					73,015.44
260 Workers' Compensation					1,901.52
270 Group Insurance – Self-Insurance					46,986.56
292 Health Savings Accounts					3,755.14
Total Personnel Services – Employee Benefits					\$143,415.98

300 Purchased Professional and Technical Services

324 Professional Educational Services – Employee Training and Development Services					2,253.10
330 Other Professional Services					62,994.88
Total Purchased Professional and Technical Services					\$65,247.98

400 Purchased Property Services

440 Rentals					1,335.13
Total Purchased Property Services					\$1,335.13

500 Other Purchased Services

530 Communications					2,643.04
580 Travel					4,371.50
Total Other Purchased Services					\$7,014.54

600 Supplies

610 General Supplies					28,165.65
Total Supplies					\$28,165.65

800 Other Objects

810 Dues and Fees					1,867.35
820 Claims and Judgments Against the LEA					25,790.71
Total Other Objects					\$27,658.06

Total 2510 Fiscal Services

					\$504,565.26
--	--	--	--	--	---------------------

General Fund (10)

2511 Supervision of Fiscal Services - Head of Component

100 Personnel Services – Salaries

	Elementary	Secondary	Federal	Total
100 Personnel Services – Salaries				86,230.15
Total Personnel Services – Salaries				\$86,230.15

200 Personnel Services – Employee Benefits

210 Group Insurance – Contracted Provider				461.05
220 Social Security Contributions				6,429.90
230 PSERS Retirement Contributions				28,085.17
260 Workers' Compensation				731.26
270 Group Insurance – Self-Insurance				18,995.64
292 Health Savings Accounts				1,400.00
Total Personnel Services – Employee Benefits				\$56,103.02

300 Purchased Professional and Technical Services

324 Professional Educational Services – Employee Training and Development Services				1,498.10
330 Other Professional Services				355.45
Total Purchased Professional and Technical Services				\$1,853.55

500 Other Purchased Services

580 Travel				688.28
Total Other Purchased Services				\$688.28

600 Supplies

610 General Supplies				145.78
Total Supplies				\$145.78

Total 2511 Supervision of Fiscal Services - Head of Component

				\$145,020.78
--	--	--	--	---------------------

General Fund (10)

2514 Payroll Services

100 Personnel Services – Salaries

100 Personnel Services – Salaries

Total Personnel Services – Salaries 32,431.62 **\$32,431.62**

200 Personnel Services – Employee Benefits

210 Group Insurance – Contracted Provider 128.35

220 Social Security Contributions 2,291.26

230 PSERS Retirement Contributions 9,856.79

260 Workers' Compensation 256.88

270 Group Insurance – Self-Insurance 7,152.96

292 Health Savings Accounts 700.00

Total Personnel Services – Employee Benefits **\$20,386.24**

800 Other Objects

820 Claims and Judgments Against the LEA 25,451.64

Total Other Objects **\$25,451.64**

Total 2514 Payroll Services **\$78,269.50**

General Fund (10)

2515 Financial Accounting Services

100 Personnel Services – Salaries

100 Personnel Services – Salaries					113,066.15
Total Personnel Services – Salaries					\$113,066.15

200 Personnel Services – Employee Benefits

210 Group Insurance – Contracted Provider					407.80
220 Social Security Contributions					8,038.96
230 PSERS Retirement Contributions					35,073.48
260 Workers' Compensation					913.38
270 Group Insurance – Self-Insurance					20,837.96
292 Health Savings Accounts					1,655.14
Total Personnel Services – Employee Benefits					\$66,926.72

300 Purchased Professional and Technical Services

324 Professional Educational Services – Employee Training and Development Services					755.00
330 Other Professional Services					62,639.43
Total Purchased Professional and Technical Services					\$63,394.43

400 Purchased Property Services

440 Rentals					1,335.13
Total Purchased Property Services					\$1,335.13

500 Other Purchased Services

530 Communications					2,643.04
580 Travel					3,683.22
Total Other Purchased Services					\$6,326.26

600 Supplies

610 General Supplies					28,019.87
Total Supplies					\$28,019.87

800 Other Objects

810 Dues and Fees					1,867.35
820 Claims and Judgments Against the LEA					339.07
Total Other Objects					\$2,206.42

Total 2515 Financial Accounting Services

					\$281,274.98
--	--	--	--	--	---------------------

General Fund (10)

2530 Warehousing and Distributing Services

100 Personnel Services – Salaries

100 Personnel Services – Salaries

	2,665.59			
Total Personnel Services – Salaries	\$2,665.59			

200 Personnel Services – Employee Benefits

220 Social Security Contributions

230 PSERS Retirement Contributions

260 Workers' Compensation

	203.96			
	44.40			
	22.63			
Total Personnel Services – Employee Benefits	\$270.99			

Total 2530 Warehousing and Distributing Services

	2,665.59			
	203.96			
	44.40			
	22.63			
Total	\$2,936.58			

General Fund (10)	Elementary	Secondary	Federal	Total
2600 Operation and Maintenance of Plant Services				
100 Personnel Services – Salaries				
100 Personnel Services – Salaries				838,854.72
Total Personnel Services – Salaries				\$838,854.72
200 Personnel Services – Employee Benefits				
210 Group Insurance – Contracted Provider				3,607.87
220 Social Security Contributions				62,191.73
230 PSERS Retirement Contributions				258,305.80
260 Workers' Compensation				7,078.54
270 Group Insurance – Self-Insurance				191,761.61
292 Health Savings Accounts				24,066.45
Total Personnel Services – Employee Benefits				\$547,012.00
300 Purchased Professional and Technical Services				
324 Professional Educational Services – Employee Training and Development Services				1,905.50
329 Professional Educational Services – Other				119,534.28
330 Other Professional Services				13,528.67
340 Technical Services				11,317.60
Total Purchased Professional and Technical Services				\$146,286.05
400 Purchased Property Services				
410 Cleaning Services				71,745.27
420 Utility Services				96,634.23
430 Repairs and Maintenance Services				171,629.69
440 Rentals				4,304.12
460 Extermination Services				9,767.30
490 Other Purchased Property Services				9,968.00
Total Purchased Property Services				\$364,048.61
500 Other Purchased Services				
522 Automotive Liability Insurance				986.00
523 General Property and Liability Insurance				(350.00)
529 Other Insurance				86,772.00
530 Communications				22,286.43
580 Travel				3,375.56
Total Other Purchased Services				\$113,069.99
600 Supplies				
610 General Supplies	86,173.49	140,446.92		226,620.41
620 Energy				610,345.10
640 Books and Periodicals				214.00
Total Supplies	\$86,173.49	\$140,446.92		\$837,179.51
700 Property				
752 Capital Equipment – Original and Additional				100,191.91
Total Property				\$100,191.91
800 Other Objects				

General Fund (10)	Elementary	Secondary	Federal	Total
2600 Operation and Maintenance of Plant Services				
800 <u>Other Objects</u>				
810 Dues and Fees				792.66
Total Other Objects	\$86,173.49	\$140,446.92		\$792.66
Total 2600 Operation and Maintenance of Plant Services				\$2,947,435.45

General Fund (10)

2610 Supervision of Operation and Maintenance of Plant Services

100 Personnel Services – Salaries

100 Personnel Services – Salaries						96,786.90
Total Personnel Services – Salaries						\$96,786.90

200 Personnel Services – Employee Benefits

210 Group Insurance – Contracted Provider						405.99
220 Social Security Contributions						7,235.21
230 PSERS Retirement Contributions						31,523.38
260 Workers' Compensation						820.82
270 Group Insurance – Self-Insurance						16,138.58
292 Health Savings Accounts						1,400.00
Total Personnel Services – Employee Benefits						\$57,523.98

500 Other Purchased Services

580 Travel						1,507.10
Total Other Purchased Services						\$1,507.10

600 Supplies

610 General Supplies			0.46		0.53	0.99
640 Books and Periodicals						35.00
Total Supplies			\$0.46		\$0.53	\$35.99

800 Other Objects

810 Dues and Fees						175.00
-------------------	--	--	--	--	--	--------

Total Other Objects

			\$0.46		\$0.53	\$175.00
--	--	--	---------------	--	---------------	-----------------

Total 2610 Supervision of Operation and Maintenance of Plant Services

			\$0.46		\$0.53	\$156,028.97
--	--	--	---------------	--	---------------	---------------------

General Fund (10)

2611 Supervision of Operation and Maintenance of Plant Services – Head of Component

100 Personnel Services – Salaries

	Elementary	Secondary	Federal	Total
100 Personnel Services – Salaries				96,786.90
Total Personnel Services – Salaries				\$96,786.90

200 Personnel Services – Employee Benefits

210 Group Insurance – Contracted Provider				405.99
220 Social Security Contributions				7,235.21
230 PSERS Retirement Contributions				31,523.38
260 Workers' Compensation				820.82
270 Group Insurance – Self-Insurance				16,138.58
292 Health Savings Accounts				1,400.00
Total Personnel Services – Employee Benefits				\$57,523.98

500 Other Purchased Services

580 Travel				1,507.10
Total Other Purchased Services				\$1,507.10

600 Supplies

610 General Supplies	0.46	0.53		0.99
640 Books and Periodicals				35.00
Total Supplies	\$0.46	\$0.53		\$35.99

800 Other Objects

810 Dues and Fees				175.00
-------------------	--	--	--	--------

Total Other Objects

Total 2611 Supervision of Operation and Maintenance of Plant Services – Head of Component	\$0.46	\$0.53		\$175.00
				\$156,028.97

General Fund (10)

2620 Operation of Buildings Services

100 Personnel Services – Salaries

100 Personnel Services – Salaries

	Elementary	Secondary	Federal	Total
				664,205.90
Total Personnel Services – Salaries				\$664,205.90

200 Personnel Services – Employee Benefits

210 Group Insurance – Contracted Provider
 220 Social Security Contributions
 230 PSERS Retirement Contributions
 260 Workers' Compensation
 270 Group Insurance – Self-Insurance
 292 Health Savings Accounts

	Elementary	Secondary	Federal	Total
				3,015.24
				49,036.88
				208,001.83
				5,597.55
				167,693.73
				22,502.52
Total Personnel Services – Employee Benefits				\$455,847.75

300 Purchased Professional and Technical Services

324 Professional Educational Services – Employee Training and Development Services
 329 Professional Educational Services – Other
 330 Other Professional Services
 340 Technical Services

	Elementary	Secondary	Federal	Total
				1,905.50
				119,534.28
				6,277.37
				11,317.60
Total Purchased Professional and Technical Services				\$139,034.75

400 Purchased Property Services

410 Cleaning Services
 420 Utility Services
 430 Repairs and Maintenance Services
 440 Rentals
 460 Extermination Services
 490 Other Purchased Property Services

	Elementary	Secondary	Federal	Total
				37,207.07
				96,634.23
				164,578.59
				4,304.12
				9,767.30
				9,968.00
Total Purchased Property Services				\$322,459.31

500 Other Purchased Services

522 Automotive Liability Insurance
 523 General Property and Liability Insurance
 529 Other Insurance
 530 Communications
 580 Travel

	Elementary	Secondary	Federal	Total
				986.00
				(350.00)
				86,772.00
				22,286.43
				1,798.70
Total Other Purchased Services				\$111,493.13

600 Supplies

610 General Supplies
 620 Energy
 640 Books and Periodicals

	Elementary	Secondary	Federal	Total
	75,131.04	123,427.98		198,559.02
				610,345.10
				179.00
Total Supplies	\$75,131.04	\$123,427.98		\$809,083.12

700 Property

752 Capital Equipment – Original and Additional

	Elementary	Secondary	Federal	Total
				5,290.00
Total Property				\$5,290.00

800 Other Objects

	<u>Elementary</u>	<u>Secondary</u>	<u>Federal</u>	<u>Total</u>
General Fund (10)				
2620 Operation of Buildings Services				
800 <u>Other Objects</u>				
810 Dues and Fees				617.66
Total Other Objects				\$617.66
Total 2620 Operation of Buildings Services	\$75,131.04	\$123,427.98		\$2,508,031.62

	Elementary	Secondary	Federal	Total
General Fund (10)				
2630 Care and Upkeep of Grounds Services				
300 <u>Purchased Professional and Technical Services</u>				
330 Other Professional Services				7,251.30
Total Purchased Professional and Technical Services				\$7,251.30
400 <u>Purchased Property Services</u>				
410 Cleaning Services				34,538.20
430 Repairs and Maintenance Services				3,590.50
Total Purchased Property Services				\$38,128.70
600 <u>Supplies</u>				
610 General Supplies	8,744.09	14,320.90		23,064.99
Total Supplies	\$8,744.09	\$14,320.90		\$23,064.99
Total 2630 Care and Upkeep of Grounds Services	\$8,744.09	\$14,320.90		\$68,444.99

General Fund (10)

2640 Care and Upkeep of Equipment Services

400 Purchased Property Services

430 Repairs and Maintenance Services

Total Purchased Property Services

600 Supplies

610 General Supplies

Total Supplies

Total 2640 Care and Upkeep of Equipment Services

	<u>Elementary</u>	<u>Secondary</u>	<u>Federal</u>	<u>Total</u>
				1,537.50
	429.64	504.36		934.00
	\$429.64	\$504.36		\$934.00
	\$429.64	\$504.36		\$2,471.50

General Fund (10)	Elementary	Secondary	Federal	Total
2650 Vehicle Operation and Maintenance Services (Other Than Student Transportation Vehicles)				
400 <u>Purchased Property Services</u>				1,923.10
430 Repairs and Maintenance Services				\$1,923.10
600 <u>Supplies</u>				
610 General Supplies	35.77	41.98		77.75
Total Supplies	\$35.77	\$41.98		\$77.75
700 <u>Property</u>				
752 Capital Equipment – Original and Additional				94,901.91
Total Property				\$94,901.91
Total 2650 Vehicle Operation and Maintenance Services (Other Than Student Transportation Vehicles)	\$35.77	\$41.98		\$96,902.76

General Fund (10)

2660 Safety and Security Services

100 Personnel Services – Salaries

100 Personnel Services – Salaries

77,861.92

Total Personnel Services – Salaries

\$77,861.92

200 Personnel Services – Employee Benefits

210 Group Insurance – Contracted Provider

186.64

220 Social Security Contributions

5,919.64

230 PSERS Retirement Contributions

18,780.59

260 Workers' Compensation

660.17

270 Group Insurance – Self-Insurance

7,929.30

292 Health Savings Accounts

163.93

Total Personnel Services – Employee Benefits

\$33,640.27

500 Other Purchased Services

580 Travel

69.76

Total Other Purchased Services

\$69.76

600 Supplies

610 General Supplies

3,983.66

Total Supplies

1,832.49

3,983.66

Total 2660 Safety and Security Services

\$1,832.49

\$3,983.66

\$1,832.49

\$2,151.17

\$2,151.17

\$115,555.61

General Fund (10)

2700 Student Transportation Services

100 Personnel Services – Salaries

100 Personnel Services – Salaries					72,393.84
Total Personnel Services – Salaries					\$72,393.84

200 Personnel Services – Employee Benefits

210 Group Insurance – Contracted Provider					388.99
220 Social Security Contributions					5,401.44
230 PSERS Retirement Contributions					23,030.46
260 Workers' Compensation					617.57
270 Group Insurance – Self-Insurance					17,485.17
292 Health Savings Accounts					1,400.00
Total Personnel Services – Employee Benefits					\$48,323.63

300 Purchased Professional and Technical Services

324 Professional Educational Services – Employee Training and Development Services

324 Professional Educational Services – Employee Training and Development Services					5,127.00
Total Purchased Professional and Technical Services					\$5,127.00

400 Purchased Property Services

430 Repairs and Maintenance Services

430 Repairs and Maintenance Services					2,703.29
Total Purchased Property Services					\$2,703.29

500 Other Purchased Services

513 Contracted Carriers					1,878,001.54
530 Communications					22,579.54
580 Travel					364.33
Total Other Purchased Services					\$1,900,945.41

600 Supplies

610 General Supplies					5,214.91
620 Energy					236,450.50
630 Food					893.94
650 Supplies & Fees – Technology Related					9,245.55
Total Supplies					\$251,804.90

700 Property

752 Capital Equipment – Original and Additional					27,567.00
Total Property					\$27,567.00

800 Other Objects

810 Dues and Fees					895.47
Total Other Objects					\$895.47

Total 2700 Student Transportation Services

Total 2700 Student Transportation Services					\$2,309,760.54
---	--	--	--	--	-----------------------

General Fund (10)

2710 Supervision of Student Transportation Services

100 Personnel Services – Salaries

	Elementary	Secondary	Federal	Total
100 Personnel Services – Salaries				72,393.84
Total Personnel Services – Salaries				\$72,393.84

200 Personnel Services – Employee Benefits

210 Group Insurance – Contracted Provider				388.99
220 Social Security Contributions				5,401.44
230 PSERS Retirement Contributions				23,030.46
260 Workers' Compensation				617.57
270 Group Insurance – Self-Insurance				17,485.17
292 Health Savings Accounts				1,400.00
Total Personnel Services – Employee Benefits				\$48,323.63

300 Purchased Professional and Technical Services

324 Professional Educational Services – Employee Training and Development Services

324 Professional Educational Services – Employee Training and Development Services				275.00
Total Purchased Professional and Technical Services				\$275.00

400 Purchased Property Services

430 Repairs and Maintenance Services

430 Repairs and Maintenance Services				2,703.29
Total Purchased Property Services				\$2,703.29

500 Other Purchased Services

530 Communications

580 Travel

530 Communications				1,555.25
580 Travel				364.33
Total Other Purchased Services				\$1,919.58

600 Supplies

610 General Supplies

630 Food

610 General Supplies				5,214.91
630 Food				893.94
Total Supplies				\$6,108.85

800 Other Objects

810 Dues and Fees

810 Dues and Fees				895.47
Total Other Objects				\$895.47

Total 2710 Supervision of Student Transportation Services

Total 2710 Supervision of Student Transportation Services				\$132,619.66
--	--	--	--	---------------------

General Fund (10)

2711 Supervision of Student Transportation Services – Head of Component

100 Personnel Services – Salaries

100 Personnel Services – Salaries					72,393.84
Total Personnel Services – Salaries					\$72,393.84

200 Personnel Services – Employee Benefits

210 Group Insurance – Contracted Provider					388.99
220 Social Security Contributions					5,401.44
230 PSERS Retirement Contributions					23,030.46
260 Workers' Compensation					617.57
270 Group Insurance – Self-Insurance					17,485.17
292 Health Savings Accounts					1,400.00
Total Personnel Services – Employee Benefits					\$48,323.63

300 Purchased Professional and Technical Services

324 Professional Educational Services – Employee Training and Development Services					275.00
Total Purchased Professional and Technical Services					\$275.00

400 Purchased Property Services

430 Repairs and Maintenance Services					2,703.29
Total Purchased Property Services					\$2,703.29

500 Other Purchased Services

530 Communications					1,555.25
580 Travel					364.33
Total Other Purchased Services					\$1,919.58

600 Supplies

610 General Supplies					5,214.91
630 Food					893.94
Total Supplies					\$6,108.85

800 Other Objects

810 Dues and Fees					895.47
Total Other Objects					\$895.47

Total 2711 Supervision of Student Transportation Services – Head of Component

					\$132,619.66
--	--	--	--	--	---------------------

General Fund (10)	Elementary	Secondary	Federal	Total
2720 Vehicle Operation Services				
500 Other Purchased Services				
513 Contracted Carriers				1,616,863.92
530 Communications				21,024.29
Total Other Purchased Services				\$1,637,888.21
600 Supplies				
620 Energy				236,450.50
650 Supplies & Fees – Technology Related				9,245.55
Total Supplies				\$245,696.05
700 Property				
752 Capital Equipment – Original and Additional				27,567.00
Total Property				\$27,567.00
Total 2720 Vehicle Operation Services				\$1,911,151.26

	<u>Elementary</u>	<u>Secondary</u>	<u>Federal</u>	<u>Total</u>
General Fund (10)				
2750 Nonpublic Transportation				
500 <u>Other Purchased Services</u>				
513 Contracted Carriers				261,137.62
Total Other Purchased Services				\$261,137.62
Total 2750 Nonpublic Transportation				\$261,137.62

General Fund (10)	Elementary	Secondary	Federal	Total
2790 Other Student Transportation Services				
300 <u>Purchased Professional and Technical Services</u>				
324 Professional Educational Services – Employee Training and Development Services				4,852.00
Total Purchased Professional and Technical Services				\$4,852.00
Total 2790 Other Student Transportation Services				\$4,852.00

General Fund (10)

2800 Support Services – Central

100 Personnel Services – Salaries

100 Personnel Services – Salaries

322,632.10

\$322,632.10

200 Personnel Services – Employee Benefits

210 Group Insurance – Contracted Provider

1,643.52

220 Social Security Contributions

23,488.67

230 PSERS Retirement Contributions

102,483.78

260 Workers' Compensation

2,668.15

270 Group Insurance – Self-Insurance

100,252.61

292 Health Savings Accounts

7,774.59

Total Personnel Services – Employee Benefits

\$238,311.32

300 Purchased Professional and Technical Services

324 Professional Educational Services – Employee Training and Development Services

5,636.06

329 Professional Educational Services – Other

10,000.00

340 Technical Services

6,375.00

Total Purchased Professional and Technical Services

\$22,011.06

400 Purchased Property Services

440 Rentals

54,064.60

Total Purchased Property Services

\$54,064.60

500 Other Purchased Services

520 Insurance – General

8,088.00

530 Communications

16,220.51

580 Travel

2,599.17

Total Other Purchased Services

\$26,907.68

600 Supplies

610 General Supplies

142,856.71

640 Books and Periodicals

157.68

650 Supplies & Fees – Technology Related

10,000.00

Total Supplies

\$216,621.82

700 Property

756 Capitalized Technology Hardware and Equipment – Original

15,397.50

Total Property

\$15,397.50

800 Other Objects

810 Dues and Fees

286.00

Total Other Objects

\$286.00

Total 2800 Support Services – Central

\$896,232.08

General Fund (10)	Elementary	Secondary	Federal	Total
2810 Planning, Research, Development and Evaluation Services				
<u>100 Personnel Services – Salaries</u>				
100 Personnel Services – Salaries				173,564.55
Total Personnel Services – Salaries				
\$173,564.55				
<u>200 Personnel Services – Employee Benefits</u>				
210 Group Insurance – Contracted Provider				797.16
220 Social Security Contributions				12,358.08
230 PSERS Retirement Contributions				53,932.41
260 Workers' Compensation				1,404.07
270 Group Insurance – Self-Insurance				64,890.92
292 Health Savings Accounts				5,520.31
Total Personnel Services – Employee Benefits				
\$138,902.95				
<u>300 Purchased Professional and Technical Services</u>				
324 Professional Educational Services – Employee Training and Development Services				5,556.06
329 Professional Educational Services – Other				10,000.00
340 Technical Services				6,375.00
Total Purchased Professional and Technical Services				
\$21,931.06				
<u>400 Purchased Property Services</u>				
440 Rentals				54,064.60
Total Purchased Property Services				
\$54,064.60				
<u>500 Other Purchased Services</u>				
520 Insurance – General				8,088.00
530 Communications				16,220.51
Total Other Purchased Services				
\$24,308.51				
<u>600 Supplies</u>				
610 General Supplies				130,936.09
650 Supplies & Fees – Technology Related			10,000.00	73,607.43
Total Supplies				
\$204,543.52				
<u>700 Property</u>				
756 Capitalized Technology Hardware and Equipment – Original				15,397.50
Total Property				
\$15,397.50				
Total 2810 Planning, Research, Development and Evaluation Services				
\$632,712.69				

General Fund (10)

2820 Information Services

100 Personnel Services – Salaries

100 Personnel Services – Salaries

Total Personnel Services – Salaries 52,925.29 **\$52,925.29**

200 Personnel Services – Employee Benefits

210 Group Insurance – Contracted Provider 268.23

220 Social Security Contributions 3,964.84

230 PSERS Retirement Contributions 17,237.71

260 Workers' Compensation 448.79

270 Group Insurance – Self-Insurance 15,613.02

292 Health Savings Accounts 154.28

Total Personnel Services – Employee Benefits **\$37,686.87**

300 Purchased Professional and Technical Services

324 Professional Educational Services – Employee Training and Development Services 80.00

Total Purchased Professional and Technical Services **\$80.00**

500 Other Purchased Services

580 Travel 748.51

Total Other Purchased Services **\$748.51**

600 Supplies

610 General Supplies 11,920.62

640 Books and Periodicals 157.68

Total Supplies **\$12,078.30**

800 Other Objects

810 Dues and Fees 226.00

Total Other Objects **\$226.00**

Total 2820 Information Services **\$103,744.97**

General Fund (10)

2821 Supervision of Information Services

100 Personnel Services – Salaries

	Elementary	Secondary	Federal	Total
100 Personnel Services – Salaries				52,925.29
Total Personnel Services – Salaries				\$52,925.29

200 Personnel Services – Employee Benefits

210 Group Insurance – Contracted Provider				268.23
220 Social Security Contributions				3,964.84
230 PSERS Retirement Contributions				17,237.71
260 Workers' Compensation				448.79
270 Group Insurance – Self-Insurance				15,613.02
292 Health Savings Accounts				154.28
Total Personnel Services – Employee Benefits				\$37,686.87

300 Purchased Professional and Technical Services

324 Professional Educational Services – Employee Training and Development Services				80.00
Total Purchased Professional and Technical Services				\$80.00

500 Other Purchased Services

580 Travel				748.51
Total Other Purchased Services				\$748.51

600 Supplies

610 General Supplies				1,903.69
640 Books and Periodicals				157.68
Total Supplies				\$2,061.37

800 Other Objects

810 Dues and Fees				226.00
Total Other Objects				\$226.00

Total 2821 Supervision of Information Services

Total 2821 Supervision of Information Services				\$93,728.04
---	--	--	--	--------------------

	<u>Elementary</u>	<u>Secondary</u>	<u>Federal</u>	<u>Total</u>
General Fund (10)				
2823 Public Information Services				
600 <u>Supplies</u>				
610 General Supplies				10,016.93
Total Supplies				\$10,016.93
Total 2823 Public Information Services				\$10,016.93

General Fund (10)

2830 Staff Services

100 Personnel Services – Salaries

100 Personnel Services – Salaries

	96,142.26			
Total Personnel Services – Salaries	\$96,142.26			

200 Personnel Services – Employee Benefits

210 Group Insurance – Contracted Provider

220 Social Security Contributions

230 PSERS Retirement Contributions

260 Workers' Compensation

270 Group Insurance – Self-Insurance

292 Health Savings Accounts

	578.13			
	7,165.75			
	31,313.66			
	815.29			
	19,748.67			
	2,100.00			

Total Personnel Services – Employee Benefits

\$61,721.50

500 Other Purchased Services

580 Travel

1,850.66

Total Other Purchased Services

\$1,850.66

800 Other Objects

810 Dues and Fees

60.00

Total Other Objects

\$60.00

Total 2830 Staff Services

\$159,774.42

General Fund (10)

2831 Supervision of Staff Services

100 Personnel Services – Salaries

100 Personnel Services – Salaries

Total Personnel Services – Salaries 96,142.26 **\$96,142.26**

200 Personnel Services – Employee Benefits

210 Group Insurance – Contracted Provider

220 Social Security Contributions

230 PSERS Retirement Contributions

260 Workers' Compensation

270 Group Insurance – Self-Insurance

292 Health Savings Accounts

Total Personnel Services – Employee Benefits

500 Other Purchased Services

580 Travel

Total Other Purchased Services 1,850.66 **\$1,850.66**

800 Other Objects

810 Dues and Fees

Total Other Objects 60.00 **\$60.00**

Total 2831 Supervision of Staff Services

\$159,774.42

LEA : 112286003 Tuscarora SD

Printed 10/19/2018 4:46:11 PM

	<u>Elementary</u>	<u>Secondary</u>	<u>Federal</u>	<u>Total</u>
General Fund (10)				
2900 Other Support Services				
500 <u>Other Purchased Services</u>				
595 IU Payments By Withholding				22,127.15
Total Other Purchased Services				\$22,127.15
Total 2900 Other Support Services				\$22,127.15

General Fund (10)	Elementary	Secondary	Federal	Total
2910 Support Services Not Listed Elsewhere In the 2000 Series				
500 <u>Other Purchased Services</u>				
595 IU Payments By Withholding				22,127.15
Total Other Purchased Services				\$22,127.15
Total 2910 Support Services Not Listed Elsewhere In the 2000 Series				\$22,127.15

	<u>Total</u>
General Fund (10)	
3000 Operation of Non-Instructional Services	
100 Personnel Services – Salaries	
100 Personnel Services – Salaries	350,469.05
Total Personnel Services – Salaries	\$350,469.05
200 Personnel Services – Employee Benefits	
210 Group Insurance – Contracted Provider	599.09
220 Social Security Contributions	26,833.71
230 PSERS Retirement Contributions	108,918.10
260 Workers' Compensation	3,018.96
270 Group Insurance – Self-Insurance	53,075.88
292 Health Savings Accounts	4,230.06
Total Personnel Services – Employee Benefits	\$196,675.80
300 Purchased Professional and Technical Services	
329 Professional Educational Services – Other	39,156.00
330 Other Professional Services	3,255.60
Total Purchased Professional and Technical Services	\$42,411.60
400 Purchased Property Services	
430 Repairs and Maintenance Services	12,233.81
Total Purchased Property Services	\$12,233.81
500 Other Purchased Services	
510 Student Transportation Services	73,260.24
520 Insurance – General	13,853.00
599 Other Miscellaneous Purchased Services	902.00
Total Other Purchased Services	\$88,015.24
600 Supplies	
610 General Supplies	29,280.14
Total Supplies	\$29,280.14
700 Property	
752 Capital Equipment – Original and Additional	2,704.00
Total Property	\$2,704.00
800 Other Objects	
810 Dues and Fees	20,314.78
Total Other Objects	\$20,314.78
Total 3000 Operation of Non-Instructional Services	\$742,104.42

General Fund (10)	Elementary	Secondary	Federal	Total
3200 Student Activities				
100 Personnel Services – Salaries				
100 Personnel Services – Salaries				299,376.38
Total Personnel Services – Salaries				\$299,376.38
200 Personnel Services – Employee Benefits				
210 Group Insurance – Contracted Provider				419.45
220 Social Security Contributions				22,769.56
230 PSERS Retirement Contributions				98,778.24
260 Workers' Compensation				2,561.85
270 Group Insurance – Self-Insurance				36,937.30
292 Health Savings Accounts				2,791.37
Total Personnel Services – Employee Benefits				\$164,257.77
300 Purchased Professional and Technical Services				
329 Professional Educational Services – Other				39,156.00
330 Other Professional Services				3,255.60
Total Purchased Professional and Technical Services				\$42,411.60
400 Purchased Property Services				
430 Repairs and Maintenance Services				12,233.81
Total Purchased Property Services				\$12,233.81
500 Other Purchased Services				
510 Student Transportation Services				73,260.24
520 Insurance – General				13,853.00
599 Other Miscellaneous Purchased Services				902.00
Total Other Purchased Services				\$88,015.24
600 Supplies				
610 General Supplies				29,280.14
Total Supplies				\$29,280.14
700 Property				
752 Capital Equipment – Original and Additional				2,704.00
Total Property				\$2,704.00
800 Other Objects				
810 Dues and Fees				20,314.78
Total Other Objects				\$20,314.78
Total 3200 Student Activities				\$658,593.72

General Fund (10)

3300 Community Services

100 Personnel Services – Salaries

100 Personnel Services – Salaries

Total Personnel Services – Salaries 51,092.67 **\$51,092.67**

200 Personnel Services – Employee Benefits

210 Group Insurance – Contracted Provider 179.64

220 Social Security Contributions 4,064.15

230 PSERS Retirement Contributions 10,139.86

260 Workers' Compensation 457.11

270 Group Insurance – Self-Insurance 16,138.58

292 Health Savings Accounts 1,438.69

Total Personnel Services – Employee Benefits **\$32,418.03**

Total 3300 Community Services **\$83,510.70**

General Fund (10)		<u>Total</u>
5000 Other Expenditures and Financing Uses		
800 Other Objects		
830 Interest	808,675.07	
Total Other Objects		\$808,675.07
900 Other Uses of Funds		
910 Redemption of Principal	4,045,530.87	
932 Capital Reserve Fund Transfers Applicable To Fund 32	550,000.00	
990 Miscellaneous Other Uses of Funds	70,951.00	
Total Other Uses of Funds		\$4,666,481.87
Total 5000 Other Expenditures and Financing Uses		\$5,475,156.94

General Fund (10)		Elementary	Secondary	Federal	Total
5100 Debt Service / Other Expenditures and Financing Uses					
800 <u>Other Objects</u>					
830 Interest					808,675.07
Total Other Objects					\$808,675.07
900 <u>Other Uses of Funds</u>					
910 Redemption of Principal					4,045,530.87
990 Miscellaneous Other Uses of Funds					70,951.00
Total Other Uses of Funds					\$4,116,481.87
Total 5100 Debt Service / Other Expenditures and Financing Uses					\$4,925,156.94

LEA : 112286003 Tuscarora SD

Printed 10/19/2018 4:46:18 PM

	Elementary	Secondary	Federal	Total
General Fund (10)				
5110 Debt Service				
800 Other Objects				
830 Interest				808,675.07
Total Other Objects				\$808,675.07
900 Other Uses of Funds				
910 Redemption of Principal				4,045,530.87
990 Miscellaneous Other Uses of Funds				70,951.00
Total Other Uses of Funds				\$4,116,481.87
Total 5110 Debt Service				\$4,925,156.94

	<u>Elementary</u>	<u>Secondary</u>	<u>Federal</u>	<u>Total</u>
General Fund (10)				
5200 Interfund Transfers – Out				
900 <u>Other Uses of Funds</u>				
932 Capital Reserve Fund Transfers Applicable To Fund 32				550,000.00
Total Other Uses of Funds				\$550,000.00
Total 5200 Interfund Transfers – Out				\$550,000.00

	<u>Elementary</u>	<u>Secondary</u>	<u>Federal</u>	<u>Total</u>
General Fund (10)				
5230 Capital Projects Fund Transfers				
900 <u>Other Uses of Funds</u>				
932 Capital Reserve Fund Transfers Applicable To Fund 32				550,000.00
Total Other Uses of Funds				\$550,000.00
Total 5230 Capital Projects Fund Transfers				\$550,000.00

Capital Reserve Fund - \$ 1431 (32)		
4000 Facilities Acquisition, Construction and Improvement Services		
300 Purchased Professional and Technical Services		<u>Total</u>
330 Other Professional Services	22,871.30	
Total Purchased Professional and Technical Services	\$22,871.30	
700 Property		
752 Capital Equipment – Original and Additional	48,137.72	
762 Capitalized Equipment - Replacement	48,100.82	
Total Property	\$96,238.54	
Total 4000 Facilities Acquisition, Construction and Improvement Services	\$119,109.84	

Capital Reserve Fund - \$ 1431 (32)

4200 Existing Site Improvement Services

300 Purchased Professional and Technical Services

330 Other Professional Services

Total Purchased Professional and Technical Services

Total 4200 Existing Site Improvement Services

	<u>Elementary</u>	<u>Secondary</u>	<u>Federal</u>	<u>Total</u>
				16,496.02
				\$16,496.02
				\$16,496.02

Capital Reserve Fund - \$ 1431 (32)

4600 Existing Building Improvement Services

300 Purchased Professional and Technical Services

330 Other Professional Services

Total Purchased Professional and Technical Services

700 Property

752 Capital Equipment – Original and Additional

762 Capitalized Equipment - Replacement

Total Property

Total 4600 Existing Building Improvement Services

	<u>Elementary</u>	<u>Secondary</u>	<u>Federal</u>	<u>Total</u>
				6,375.28
				\$6,375.28
				48,137.72
				48,100.82
				\$96,238.54
				\$102,613.82

Other Capital Projects Fund (39)

2000 Support Services

800 Other Objects

810 Dues and Fees

Total Other Objects

Total 2000 Support Services

Total

46,011.23

\$46,011.23

\$46,011.23

Other Capital Projects Fund (39)

2300 Support Services – Administration

800 Other Objects

810 Dues and Fees

46,011.23

Total Other Objects

\$46,011.23

Total 2300 Support Services – Administration

\$46,011.23

Other Capital Projects Fund (39)

2390 Other Administration Services

800 Other Objects

810 Dues and Fees

46,011.23

Total Other Objects

\$46,011.23

Total 2390 Other Administration Services

\$46,011.23

Other Capital Projects Fund (39)		
4000 Facilities Acquisition, Construction and Improvement Services		
400 Purchased Property Services		
450 Construction Services	1,138,386.24	
Total Purchased Property Services	\$1,138,386.24	
600 Supplies		
610 General Supplies	36,062.20	
Total Supplies	\$36,062.20	
Total 4000 Facilities Acquisition, Construction and Improvement Services	\$1,174,448.44	

Other Capital Projects Fund (39)

4200 Existing Site Improvement Services

400 Purchased Property Services

450 Construction Services

Total Purchased Property Services

Total 4200 Existing Site Improvement Services

	<u>Elementary</u>	<u>Secondary</u>	<u>Federal</u>	<u>Total</u>
				2,800.00
				\$2,800.00
				\$2,800.00

Other Capital Projects Fund (39)

4600 Existing Building Improvement Services

400 Purchased Property Services

450 Construction Services

Total Purchased Property Services

600 Supplies

610 General Supplies

Total Supplies

Total 4600 Existing Building Improvement Services

	<u>Elementary</u>	<u>Secondary</u>	<u>Federal</u>	<u>Total</u>
				1,135,586.24
				\$1,135,586.24
				36,062.20
				\$36,062.20
				\$1,171,648.44

Other Capital Projects Fund (39)
5000 Other Expenditures and Financing Uses

	<u>Total</u>
800 <u>Other Objects</u>	5,340.00
830 Interest	5,340.00
Total Other Objects	\$5,340.00

900 Other Uses of Funds

910 Redemption of Principal	1,200,000.00
Total Other Uses of Funds	\$1,200,000.00
Total 5000 Other Expenditures and Financing Uses	\$1,205,340.00

Other Capital Projects Fund (39)

5100 Debt Service / Other Expenditures and Financing Uses

800 Other Objects

830 Interest

Total Other Objects

5,340.00
\$5,340.00

900 Other Uses of Funds

910 Redemption of Principal

Total Other Uses of Funds

1,200,000.00
\$1,200,000.00

Total 5100 Debt Service / Other Expenditures and Financing Uses

\$1,205,340.00

Other Capital Projects Fund (39)

5110 Debt Service

800 Other Objects

830 Interest

Total Other Objects

5,340.00
\$5,340.00

900 Other Uses of Funds

910 Redemption of Principal

1,200,000.00

Total Other Uses of Funds

\$1,200,000.00

Total 5110 Debt Service

\$1,205,340.00

	<u>General Fund(10)</u>	<u>Public Purpose Trust(27)</u>	<u>Other Compt Approved (28)</u>	<u>Athletic / Activity(29)</u>	<u>Capital Reserve (690, 1850)(31)</u>
1000 Instruction					
1100 Regular Programs - Elementary / Secondary	15,664,011.76				
1200 Special Programs - Elementary / Secondary	2,979,628.64				
1300 Vocational Education	560,806.75				
1400 Other Instructional Programs - Elementary / Secondary	492,022.20				
1800 Pre-Kindergarten	306,000.00				
Total Instruction	\$20,002,469.35				
2000 Support Services					
2100 Support Services - Students	1,238,576.84				
2200 Support Services - Instructional Staff	1,394,525.57				
2300 Support Services - Administration	1,995,417.79				
2400 Support Services - Pupil Health	594,381.05				
2500 Support Services - Business	507,501.84				
2600 Operation and Maintenance of Plant Services	2,947,435.45				
2700 Student Transportation Services	2,309,760.54				
2800 Support Services - Central	896,232.08				
2900 Other Support Services	22,127.15				
Total Support Services	\$11,905,958.31				
3000 Operation of Non-Instructional Services					
3200 Student Activities	658,593.72				
3300 Community Services	83,510.70				
Total Operation of Non-Instructional Services	\$742,104.42				
4000 Facilities Acquisition, Construction and Improvement Services					
4200 Existing Site Improvement Services					
4600 Existing Building Improvement Services					
Total Facilities Acquisition, Construction and Improvement					
5000 Other Expenditures and Financing Uses					
5100 Debt Service / Other Expenditures and Financing Uses	4,925,156.94				
5200 Interfund Transfers - Out	550,000.00				
Total Other Expenditures and Financing Uses	\$5,475,156.94				
TOTAL ACTUAL EXPENDITURES & OTHER FINANCING USES	\$38,125,689.02				

	<u>Capital Reserve (1431)(32)</u>	<u>Other Capital Projects Fund(39)</u>	<u>Debt Service(40)</u>	<u>Permanent(90)</u>	<u>Total</u>
1000 Instruction					
1100 Regular Programs - Elementary / Secondary					15,664,011.76
1200 Special Programs - Elementary / Secondary					2,979,628.64
1300 Vocational Education					560,806.75
1400 Other Instructional Programs - Elementary / Secondary					492,022.20
1800 Pre-Kindergarten					306,000.00
Total Instruction					\$20,002,469.35
2000 Support Services					
2100 Support Services - Students					1,238,576.84
2200 Support Services - Instructional Staff					1,394,525.57
2300 Support Services - Administration		46,011.23			2,041,429.02
2400 Support Services - Pupil Health					594,381.05
2500 Support Services - Business					507,501.84
2600 Operation and Maintenance of Plant Services					2,947,435.45
2700 Student Transportation Services					2,309,760.54
2800 Support Services - Central					896,232.08
2900 Other Support Services					22,127.15
Total Support Services		\$46,011.23			\$11,951,969.54
3000 Operation of Non-Instructional Services					
3200 Student Activities					658,593.72
3300 Community Services					83,510.70
Total Operation of Non-Instructional Services					\$742,104.42
4000 Facilities Acquisition, Construction and Improvement Services					
4200 Existing Site Improvement Services	16,496.02	2,800.00			19,296.02
4600 Existing Building Improvement Services	102,613.82	1,171,648.44			1,274,262.26
Total Facilities Acquisition, Construction and Improvement	\$119,109.84	\$1,174,448.44			\$1,293,558.28
5000 Other Expenditures and Financing Uses					
5100 Debt Service / Other Expenditures and Financing Uses		1,205,340.00			6,130,496.94
5200 Interfund Transfers - Out					550,000.00
Total Other Expenditures and Financing Uses		\$1,205,340.00			\$6,680,496.94
TOTAL ACTUAL EXPENDITURES & OTHER FINANCING USES	\$119,109.84	\$2,425,799.67			\$40,670,598.53

PSERS Salary Data (Salary Data should relate to the General Fund only)

Amount Description	Amount
Total Salary Base for salaries subject to PSERS withholding	14,204,182.00
Total Federally Funded salaries subject to PSERS withholding	229,746.00

Title I Expenditure Data

Amount Description	Amount
Expenditures Funded with Current Title I Funds	358,924.00
Expenditures Funded with Carry over Title I Funds	7,319.00
Total Title I Expenditure Data	\$366,243.00

Benefits for Staff Relative to Collective Bargaining Agreements

OBJECT	COVERED	NOT COVERED	TOTAL
10 General Fund			
211 Medical Insurance			
212 Dental Insurance			
215 Eye Care Insurance	22,907.00	10,881.00	33,788.00
216 Prescription Insurance			
271 Self-Insurance Medical Benefits	1,945,744.00	835,904.00	2,781,648.00
272 Self-Insurance Dental Benefits	99,647.00	46,751.00	146,398.00
275 Self-Insurance Eye Care Benefits			
276 Self-Insurance Prescription Benefits			
FUND TOTAL	\$2,068,298.00	\$893,536.00	\$2,961,834.00
50 Enterprise Fund			
No Self Insurance data to report			
211 Medical Insurance			
212 Dental Insurance			
215 Eye Care Insurance			
216 Prescription Insurance			
271 Self-Insurance Medical Benefits			
272 Self-Insurance Dental Benefits			
275 Self-Insurance Eye Care Benefits			
276 Self-Insurance Prescription Benefits			
FUND TOTAL			
60 Internal Service Fund			
No Self Insurance data to report			
211 Medical Insurance			
212 Dental Insurance			
215 Eye Care Insurance			
216 Prescription Insurance			
271 Self-Insurance Medical Benefits			
272 Self-Insurance Dental Benefits			
275 Self-Insurance Eye Care Benefits			
276 Self-Insurance Prescription Benefits			
FUND TOTAL			
Total of All Funds	\$2,068,298.00	\$893,536.00	\$2,961,834.00

Function	Special Education (Prior Year)	Nonspecial Education (Prior Year)	Total (Prior Year)	Special Education (Current Year)	Nonspecial Education (Current Year)	Total (Current Year)
2120 Guidance Services	41,582.40	355,575.24	397,157.64	47,359.65	376,250.86	423,610.51
2140 Psychological Services	23,885.75	204,249.40	228,135.15	25,153.27	199,831.27	224,984.54
2150 Speech Pathology and Audiology Services	20,767.36	177,583.70	198,351.06	21,650.12	172,000.38	193,650.50
2160 Social Work Services	32,083.68	274,350.71	306,434.39	36,525.19	290,175.94	326,701.13
2260 Instruction and Curriculum Development Services	37,947.96	324,496.71	362,444.67	52,495.63	417,053.79	469,549.42
2350 Legal and Accounting Services	6,805.86	58,197.54	65,003.40	6,497.42	51,619.08	58,116.50
2420 Medical Services	58,990.67	504,435.02	563,425.69	66,376.62	527,331.96	593,708.58
2440 Nursing Services						
2700 Student Transportation Services	230,939.01	1,974,782.24	2,205,721.25	258,231.22	2,051,529.32	2,309,760.54
Total	\$453,002.69	\$3,873,670.56	\$4,326,673.25	\$514,289.12	\$4,085,792.60	\$4,600,081.72

(PRINCIPAL AMOUNTS ONLY)

GOVERNMENTAL FUNDS/ACTIVITIES

	Short-Term Borrowing	General Obligation Bonds/Notes	Authority Building Obligations	Other Long-Term Debt	Other Post-Employment Benefits (OPEB)	Compensated Absences	Net Pension Liability	Total
1. Debt at Beginning of Fiscal Year		31,105,000.00		1,752,229.00	307,610.00	893,897.00	54,399,555.00	88,458,291.00
2. Additional Debt Incurred During Year		4,450,000.00			3,929,013.00	768,174.00		9,147,187.00
3. Retirements and Repayments		3,640,000.00		1,752,229.00		821,596.00	95,597.00	6,309,422.00
4. Debt at End of Fiscal Year		31,915,000.00			4,236,623.00	840,475.00	54,303,958.00	91,296,056.00
5. Accreted Interest at End Of Fiscal Year								
6. Total Debt and Accreted Interest		31,915,000.00			4,236,623.00	840,475.00	54,303,958.00	91,296,056.00
7. Current Portion P&I - Due within 1 year		3,402,299.00				296,528.00		3,698,827.00
8. Interest Paid during current fiscal year		772,049.95		33,406.39				805,456.34

(PRINCIPAL AMOUNTS ONLY)

PROPRIETARY FUNDS

	Short-Term Borrowing	General Obligation Bonds/Notes	Authority Building Obligations	Other Long-Term Debt	Other Post-Employment Benefits (OPEB)	Compensated Absences	Net Pension Liability	Total
1. Debt at Beginning of Fiscal Year						19,927.00	112,955.00	132,882.00
2. Additional Debt Incurred During Year						3,178.00	9,110.00	12,288.00
3. Retirements and Repayments						23,105.00		23,105.00
4. Debt at End of Fiscal Year							122,065.00	122,065.00
5. Accreted Interest at End Of Fiscal Year								
6. Total Debt and Accreted Interest							122,065.00	122,065.00
7. Current Portion P&I - Due within 1 year								
8. Interest Paid during current fiscal year								

Total Principal and Interest Payments Made by Your School - All Funds

Function	Fund	Principal (910)	Principal (920)	Interest (830)	Total (Principal + Interest)	Misc Other Uses (990)
5110	10 General Fund	4,045,530.87		808,675.07	4,854,205.94	70,951.00
5110	20 Special Revenue Funds					
5110	30 Capital Projects Funds	1,200,000.00		5,340.00	1,205,340.00	
5110	40 Debt Service Fund					
5110	90 Permanent Fund					
5120	10 General Fund					
5120	20 Special Revenue Funds					
5120	30 Capital Projects Funds					
5120	40 Debt Service Fund					
Total Debt Payments - Governmental Funds		\$5,245,530.87		\$814,015.07	\$6,059,545.94	\$70,951.00

Function	Fund	Principal (910)	Principal (920)	Interest (830)	Total (Principal + Interest)
5110	50 Enterprise Fund				
5110	60 Internal Service Fund				
5120	50 Enterprise Fund				
5120	60 Internal Service Fund				
Total Debt Payments - Proprietary Funds					

Debt Details
Governmental Funds/ Activities

Debt Category	Debt Issue Date (MM/YYYY)	Debt at Beginning of Fiscal Year	Principal Amounts Only			Debt at End of Fiscal Year	Current Portion Due Within One Year (Principal and Interest)	Interest Paid During Fiscal Year
			Additions	Reductions / Repayments				
General Obligation Bonds/Notes – CIB	09/2017		1,525,000.00	170,000.00		1,355,000.00	360,745.00	10,141.25
General Obligation Bonds/Notes – CIB	09/2017		2,925,000.00	5,000.00		2,920,000.00	78,292.00	25,696.12
General Obligation Bonds/Notes – CIB	09/2016	3,055,000.00		1,205,000.00		1,850,000.00	54,395.00	84,235.90
General Obligation Bonds/Notes – CIB	09/2016	9,845,000.00		1,330,000.00		8,515,000.00	1,506,567.00	175,421.01
General Obligation Bonds/Notes – CIB	10/2015	4,885,000.00		35,000.00		4,850,000.00	151,400.00	117,230.67
General Obligation Bonds/Notes – CIB	02/2015	3,430,000.00		795,000.00		2,635,000.00	853,675.00	60,600.00
General Obligation Bonds/Notes – CIB	07/2014	9,890,000.00		100,000.00		9,790,000.00	397,225.00	298,725.00
Other Long Term Debt/Liabilities		1,752,229.00		1,752,229.00				33,406.39
Compensated Absences		893,897.00	768,174.00	821,596.00		840,475.00	296,528.00	
Other Post-Employment Benefits (OPEB)		307,610.00	3,929,013.00			4,236,623.00		
Net Pension Liability		54,399,555.00		95,597.00		54,303,958.00		
Totals for Debt Entered:		\$88,458,291.00	\$9,147,187.00	\$6,309,422.00		\$91,296,056.00	\$3,698,827.00	\$805,456.34

Bond Details
Proprietary Funds

Debt Category	Debt Issue Date (MM/YYYY)	Debt at Beginning of Fiscal Year	Principal Amounts Only			Debt at End of Fiscal Year	Current Portion Due Within One Year (Principal and Interest)	Interest Paid During Fiscal Year
			Additions	Reductions / Repayments				
Compensated Absences		19,927.00	3,178.00	23,105.00				
Net Pension Liability		112,955.00	9,110.00			122,065.00		
Totals for Debt Entered:		\$132,882.00	\$12,288.00	\$23,105.00		\$122,065.00		

General Fund (10)

Section 1: Tuition/Purchased Services as Reported within Expenditure Detail

	Amount
Tuition Reported in General Fund Expenditures 1000-560	1,794,728.15
Purchased Services in General Fund Expenditures 1000-594 and 1000-597	
Section 1 Total	\$1,794,728.15

Section 2: Tuition Paid to Institution Types During Fiscal Year

	Tuition Paid For Nonspecial Education	Tuition Paid For Special Education	Total
1 1306 Institutions			
2 Institutionalized Children's Programs			
3 Juveniles Incarcerated in Adult Facilities			
4 Residential Treatment Facilities	28,350.34	18,052.47	46,402.81
5 Other Local Education Agencies	27,872.49	250,480.44	278,352.93
6 Brick and Mortar Charter Schools			
7 Cyber Charter Schools	688,991.58	219,588.88	908,580.46
8 Career and Technology Centers	498,108.56	62,698.19	560,806.75
9 Approved Private Schools			
10 PA Chartered Schools for the Deaf and Blind			
11 Private Residential Rehabilitative Institutions			
12 Juvenile Detention Centers			
13 Special Program Jointures			
14 Other Tuition Not Included Elsewhere In This Section		585.20	585.20
Section 2 Total	\$1,243,322.97	\$551,405.18	\$1,794,728.15

Food Service / Cafeteria Operations Fund (51)

3000 Operation of Non-Instructional Services

100 Personnel Services – Salaries

100 Personnel Services – Salaries

Total Personnel Services – Salaries 27,988.00 **\$27,988.00**

200 Personnel Services – Employee Benefits

210 Group Insurance – Contracted Provider

220 Social Security Contributions

230 PSERS Retirement Contributions

250 Unemployment Compensation

260 Workers' Compensation

292 Health Savings Accounts

12,711.09
1,961.99
14,275.82
73.32
269.37
765.41
\$30,057.00

Total Personnel Services – Employee Benefits

400 Purchased Property Services

410 Cleaning Services

430 Repairs and Maintenance Services

460 Extermination Services

10,000.00
17,558.00
2,256.00
\$29,814.00

Total Purchased Property Services

500 Other Purchased Services

530 Communications

570 Food Service Management

580 Travel

494.00
1,078,887.00
76.00
\$1,079,457.00

Total Other Purchased Services

600 Supplies

610 General Supplies

630 Food

11,515.00
102,478.00
\$113,993.00

Total Supplies

700 Property

740 Depreciation

31,855.00
\$31,855.00

Total Property

800 Other Objects

810 Dues and Fees

890 Miscellaneous Expenditures

2,180.00
441.00
\$2,621.00

Total Other Objects

Total 3000 Operation of Non-Instructional Services

\$1,315,785.00

Food Service / Cafeteria Operations Fund (51)

	Elementary	Secondary	Federal	Total
3100 Food Services				
100 Personnel Services – Salaries				
100 Personnel Services – Salaries	27,988.00			27,988.00
Total Personnel Services – Salaries	\$27,988.00			\$27,988.00
200 Personnel Services – Employee Benefits				
210 Group Insurance – Contracted Provider	12,711.09			12,711.09
220 Social Security Contributions	1,961.99			1,961.99
230 PSERS Retirement Contributions	14,275.82			14,275.82
250 Unemployment Compensation	73.32			73.32
260 Workers' Compensation	269.37			269.37
292 Health Savings Accounts	765.41			765.41
Total Personnel Services – Employee Benefits	\$30,057.00			\$30,057.00
400 Purchased Property Services				
410 Cleaning Services	10,000.00			10,000.00
430 Repairs and Maintenance Services	17,558.00			17,558.00
460 Extermination Services	2,256.00			2,256.00
Total Purchased Property Services	\$29,814.00			\$29,814.00
500 Other Purchased Services				
530 Communications	494.00			494.00
570 Food Service Management	1,078,887.00			1,078,887.00
580 Travel	76.00			76.00
Total Other Purchased Services	\$1,079,457.00			\$1,079,457.00
600 Supplies				
610 General Supplies	11,515.00			11,515.00
630 Food	102,478.00			102,478.00
Total Supplies	\$113,993.00			\$113,993.00
700 Property				
740 Depreciation				31,855.00
Total Property				\$31,855.00
800 Other Objects				
810 Dues and Fees	2,180.00			2,180.00
890 Miscellaneous Expenditures	441.00			441.00
Total Other Objects	\$2,621.00			\$2,621.00
Total 3100 Food Services	\$1,283,930.00			\$1,315,785.00

	<u>Food Service(51)</u>	<u>Child Care Operations(52)</u>	<u>Other Enterprise(58)</u>	<u>Internal Service(60)</u>	<u>Total</u>
3000 <u>Operation of Non-Instructional Services</u>					
3100 Food Services	1,315,785.00				1,315,785.00
Total Operation of Non-Instructional Services	\$1,315,785.00				\$1,315,785.00
TOTAL ACTUAL EXPENDITURES & OTHER FINANCING USES	\$1,315,785.00				\$1,315,785.00