



Breakfast Menu

January, 2019

More info...

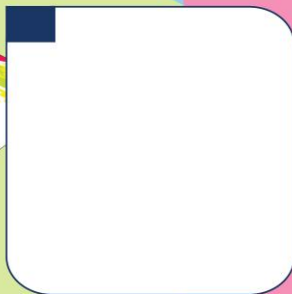
Students must select a minimum of 3 food items to make a meal.

Choice of Milk:

1% Fat Free or Fat Free Chocolate Milk

More info...

A parent/guardian of any student with a food allergy should feel free to contact the Food Service Director at: (708)-484-5773



01
WINTER BREAK

02
WINTER BREAK

03
WINTER BREAK

04
WINTER BREAK

07
Frosted Mini Wheats
String Cheese
Fruit Juice
Fresh Apple

08
Yogurt
Goldfish
Apple Juice
Fresh Pear

09
Blueberry Muffin
Cheese Stick
Orange Juice
Fresh Banana

10
Yogurt
Jurassic Park
Graham Snack
Fruit Juice
Fresh Apple

11
Cinnamon Chex
String Cheese
Apple Juice
Fresh Grapes

14
NG Bar
String Cheese
Fruit Juice
Fresh Apple

15
Yogurt
Jurassic Park
Graham Snack
Apple Juice
Fresh Pear

16
Breakfast Bar
Cheese Stick
Orange Juice
Fresh Banana

17
Cinnamon Raisin
Bagel w/ Cream
Cheese
Fruit Juice
Fresh Apple

18
Cinnamon Toast
Crunch
String Cheese
Apple Juice
Fresh Grapes

21
NO SCHOOL

22
NO SCHOOL

23
Cinnamon Chex
Cheese Stick
Orange Juice
Fresh Banana

24
Yogurt
Goldfish
Graham Snack
Fruit Juice
Fresh Apple

25
Half Sunbutter & Jelly
Apple Juice
Fresh Grapes

28
Frosted Mini Wheats
String Cheese
Fruit Juice
Fresh Apple

29
Mini Strawberry Creamy Cheese
Bagel
Apple Juice
Fresh Pear

30
NG Bar
String Cheese
Orange Juice
Fresh Pear

31
Bagel w/ Cream
Cheese
Fruit Juice
Fresh Apple



This institution is an equal opportunity provider.



Desayuno Menú

Enero, de 2019

Más información...

Los estudiantes deben seleccionar un mínimo de 3 alimentos para hacer una comida.

Elección de leche:

1% sin grasa o

Chocolate sin grasa

Más información...

Un padre / tutor de cualquier estudiante con alergia a los alimentos debe contactar al Director del Servicio de Alimentos al:

(708) -484-5773

