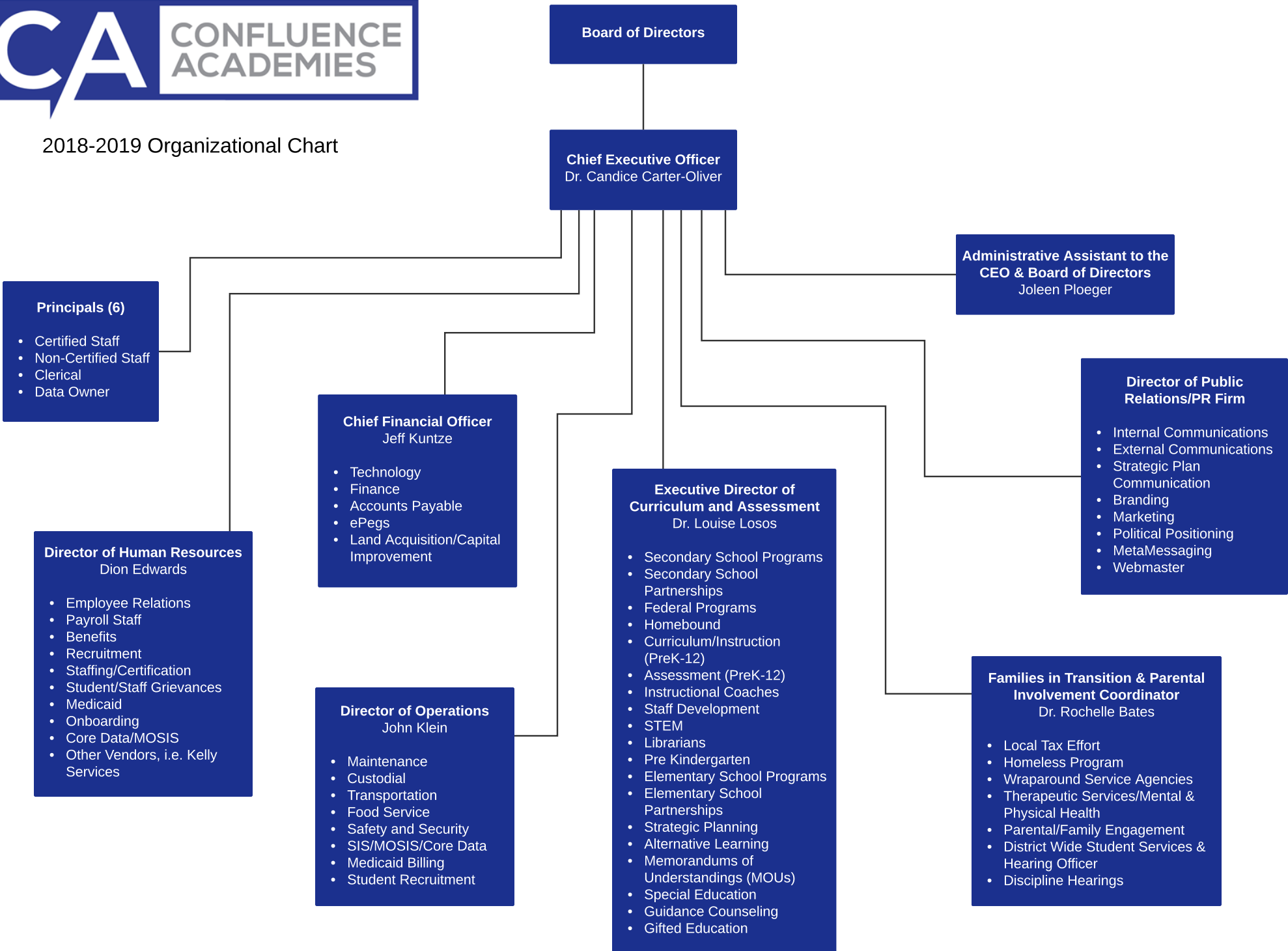




2018-2019 Organizational Chart



**Board of Directors**

**Chief Executive Officer**  
Dr. Candice Carter-Oliver

**Principals (6)**

- Certified Staff
- Non-Certified Staff
- Clerical
- Data Owner

**Administrative Assistant to the CEO & Board of Directors**  
Joleen Ploeger

**Director of Human Resources**  
Dion Edwards

- Employee Relations
- Payroll Staff
- Benefits
- Recruitment
- Staffing/Certification
- Student/Staff Grievances
- Medicaid
- Onboarding
- Core Data/MOSIS
- Other Vendors, i.e. Kelly Services

**Chief Financial Officer**  
Jeff Kuntze

- Technology
- Finance
- Accounts Payable
- ePegs
- Land Acquisition/Capital Improvement

**Director of Operations**  
John Klein

- Maintenance
- Custodial
- Transportation
- Food Service
- Safety and Security
- SIS/MOSIS/Core Data
- Medicaid Billing
- Student Recruitment

**Executive Director of Curriculum and Assessment**  
Dr. Louise Losos

- Secondary School Programs
- Secondary School Partnerships
- Federal Programs
- Homebound
- Curriculum/Instruction (PreK-12)
- Assessment (PreK-12)
- Instructional Coaches
- Staff Development
- STEM
- Librarians
- Pre Kindergarten
- Elementary School Programs
- Elementary School Partnerships
- Strategic Planning
- Alternative Learning
- Memorandums of Understandings (MOUs)
- Special Education
- Guidance Counseling
- Gifted Education

**Director of Public Relations/PR Firm**

- Internal Communications
- External Communications
- Strategic Plan Communication
- Branding
- Marketing
- Political Positioning
- MetaMessaging
- Webmaster

**Families in Transition & Parental Involvement Coordinator**  
Dr. Rochelle Bates

- Local Tax Effort
- Homeless Program
- Wraparound Service Agencies
- Therapeutic Services/Mental & Physical Health
- Parental/Family Engagement
- District Wide Student Services & Hearing Officer
- Discipline Hearings