

OVERVIEW OF THE 2018 STATE ACCOUNTABILITY SYSTEM

STUDENT ACHIEVEMENT



All Students

Part A: STAAR

- Combined over all subject areas evaluated (reading, mathematics, writing, science, and social studies)
- Credit awarded for Approaches Grade Level or above, Meets Grade Level or above, and Masters Grade Level on
 - ♦ STAAR* (with and without accommodations) in grades 3–8 (including Spanish versions where applicable);
 - ♦ OC assessments (with and without accommodations); and
 - ♦ STAAR Alternate 2 at Level II Satisfactory and Level III Accomplished standards.

Part B: College, Career, and Military Readiness

Percentage of annual graduates that accomplish any one of the following:

- Meet TSI criteria in ELA/reading and mathematics on assessments or college prep courses
- Meet AP/IB criteria
- Earn dual-course credits
- Enlist in the U.S. Armed Forces
- Earn an approved industry-based certification
- Earn an associate's degree while in high school• Graduate with completed IEP and workforce readiness
- Complete CTE coherent sequence coursework and earn credit aligned with approved industry-based certifications (one-half point credit)

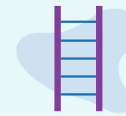
Part C: Graduation Rate

Four-year, five-year, or six-year graduation rate (or annual dropout rate if no graduation rate)

Domain Score

For elementary and middle schools, the Student Achievement domain score is based solely on the STAAR component. For districts and high schools, the three components are weighted 40%-40%-20%, respectively.

SCHOOL PROGRESS



All Students

Part A: Academic Growth

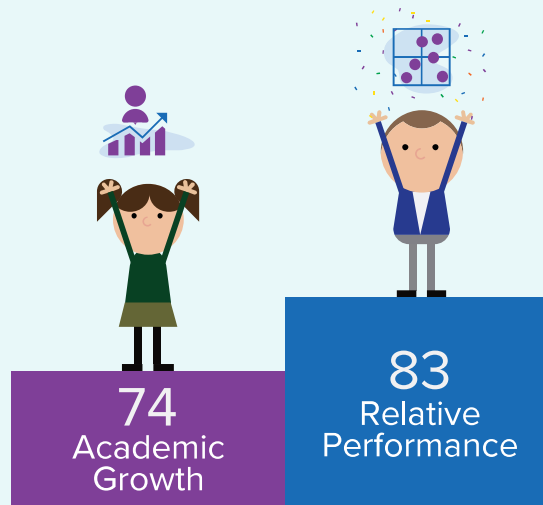
Credit awarded for students who improve performance year over year as measured by STAAR progress measures and performance levels on STAAR reading and mathematics.

Part B: Relative Performance

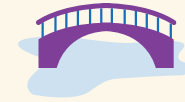
Credit awarded based on performance relative to similar districts or campuses.

Domain Score

The School Progress domain score is the better of Part A: Academic Growth or Part B: Relative Performance.



CLOSING THE GAPS



All Students and Disaggregated Student Groups

Student performance disaggregated by the following:

- All students
- Race/ethnicity
- Economically disadvantaged status
- Current special education
- Former special education
- Current and monitored English learners
- Continuously enrolled
- Non-continuously enrolled

Components

Part A: Grade Level Performance

Part B: Academic Growth

Part C: English Language Proficiency

Part D: Student Achievement

Domain Score

Credit awarded based on weighted performance of student groups against annual targets set by subject area.

The Closing the Gaps domain score is based on the four components weighted by district or campus type.



Better of either **Student Achievement** or **School Progress** = **70%** of overall rating

30% of overall rating

Distinction designations are awarded to campuses in ELA/reading, mathematics, science, social studies, Academic Growth, and Closing the Gaps. Distinction designations are awarded to campuses and districts in Postsecondary Readiness. Campuses must be rated Met Standard overall to be eligible for distinction designations. Districts rated F overall and alternative education accountability campuses are not eligible for distinction designations.