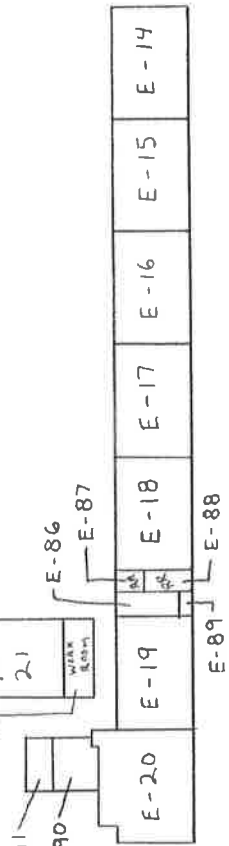
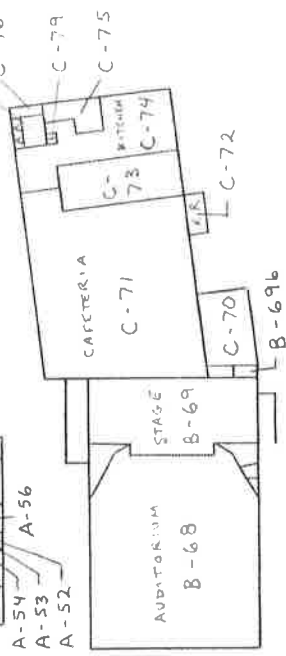
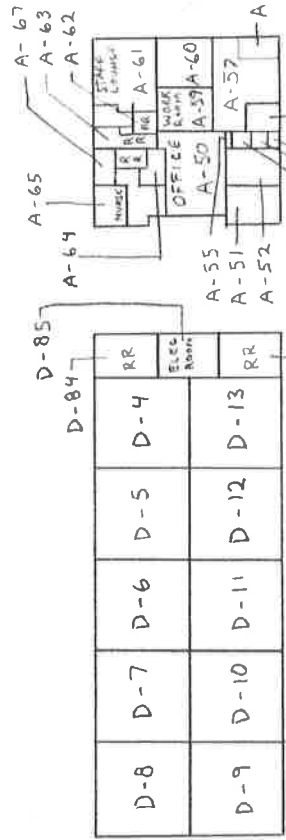
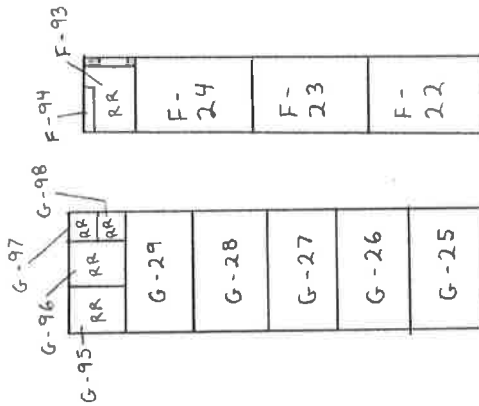
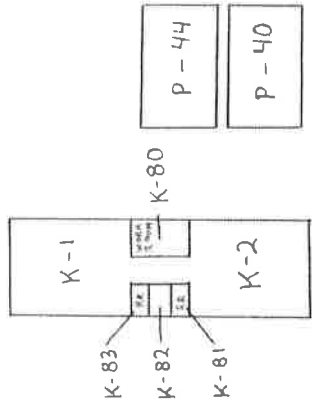
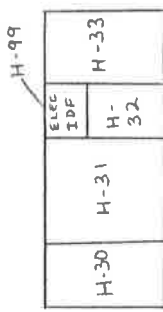


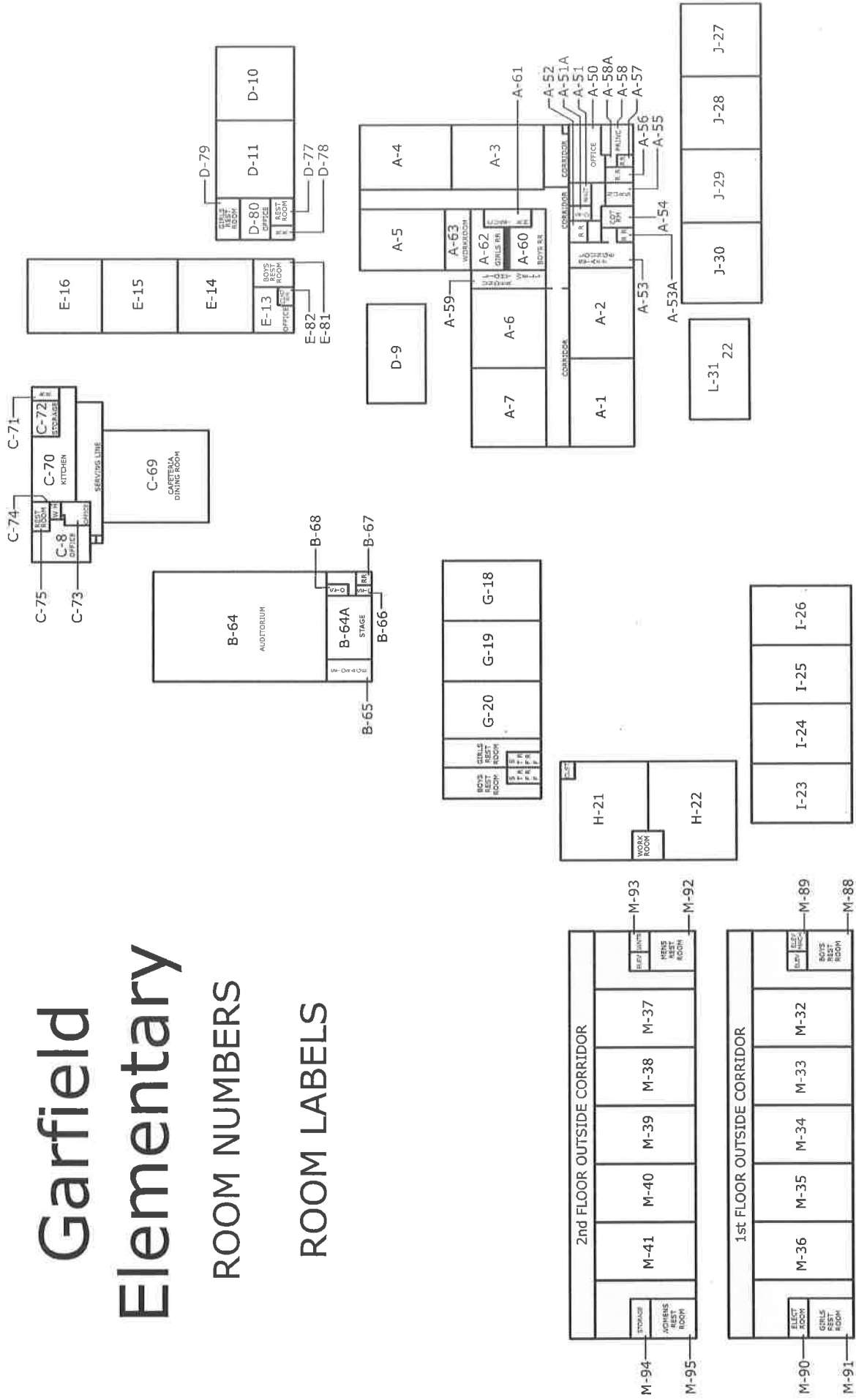
FREMONT



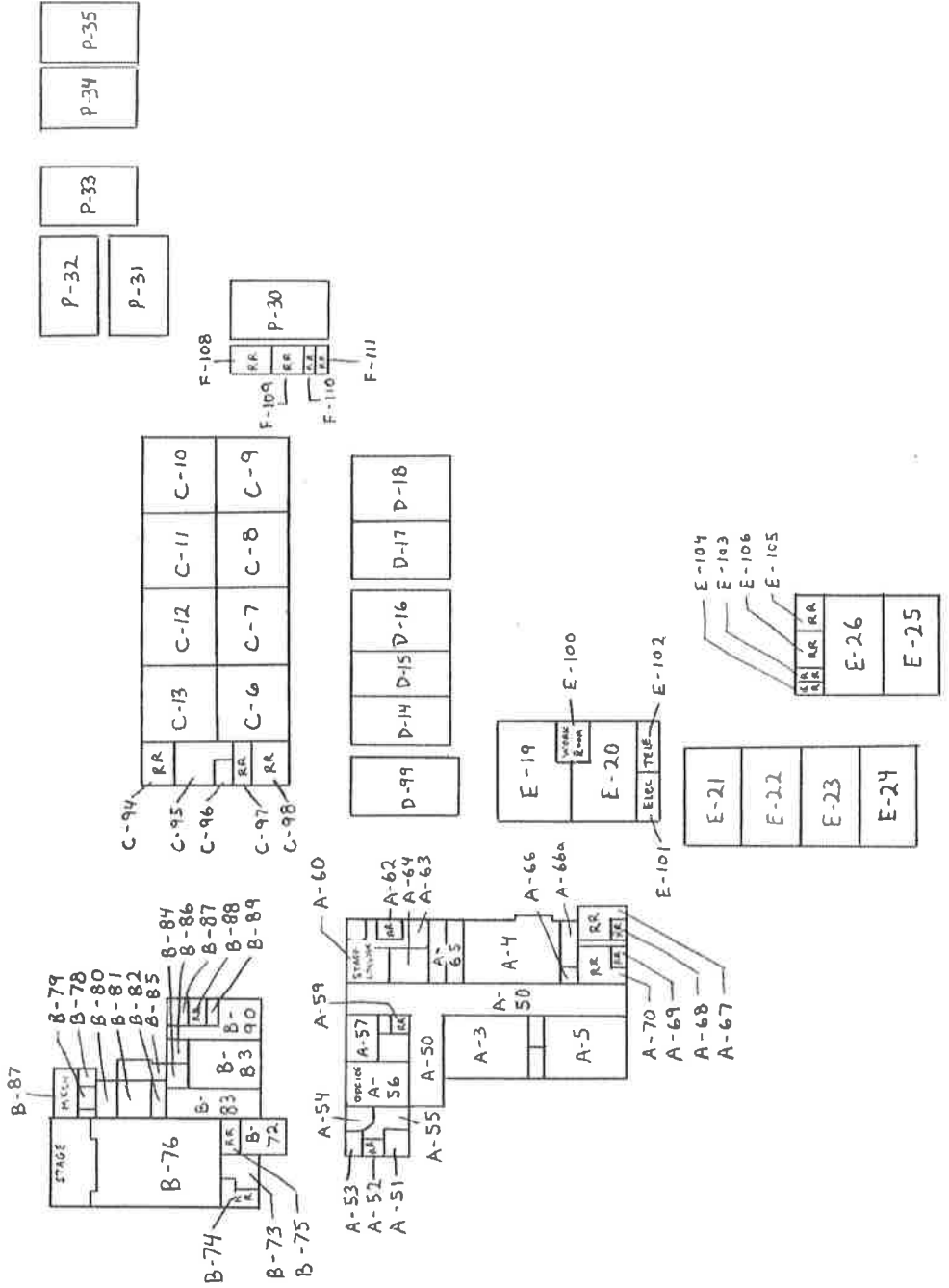
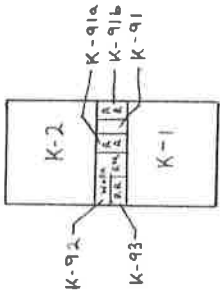
Garfield Elementary

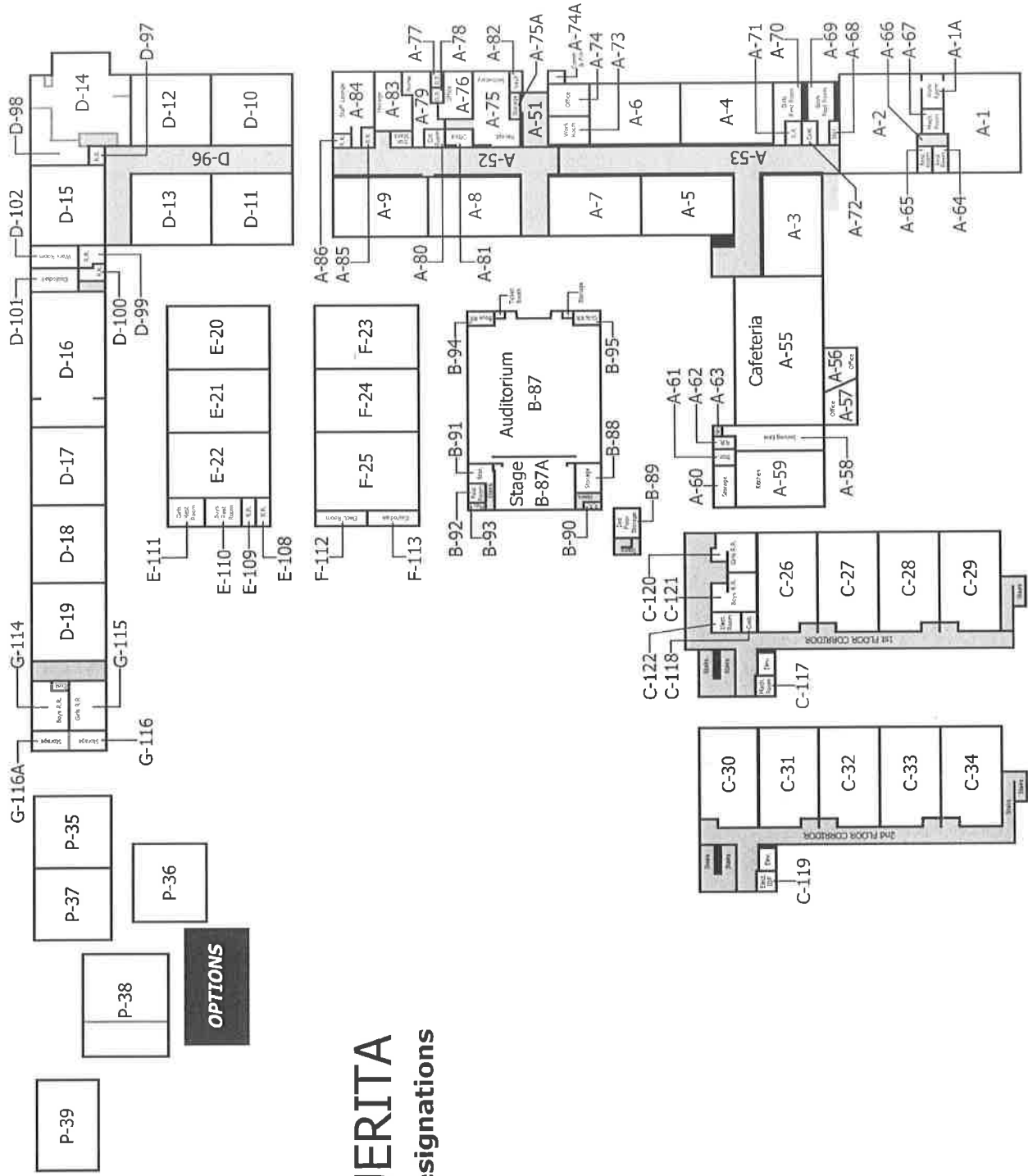
ROOM NUMBERS

ROOM LABELS



GRANADA

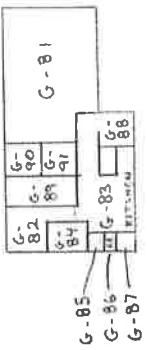
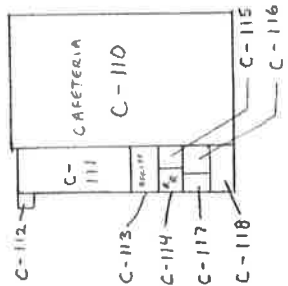
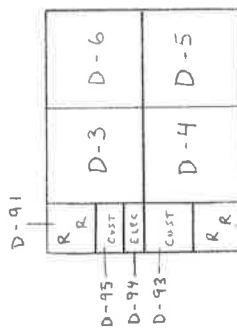
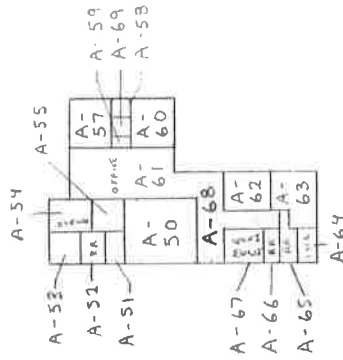
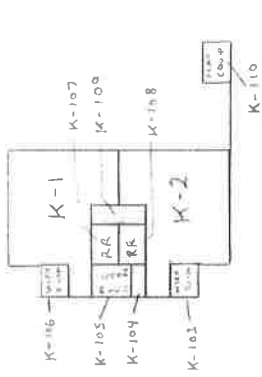
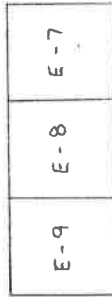
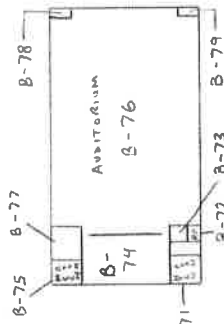
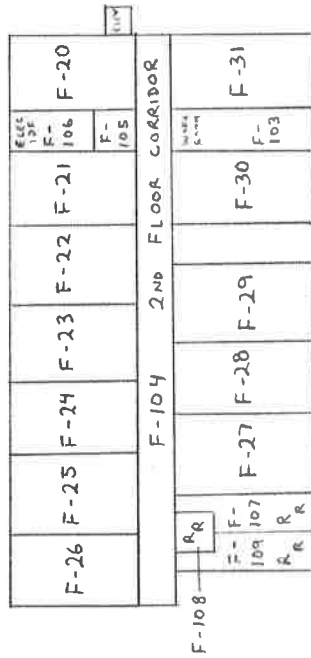
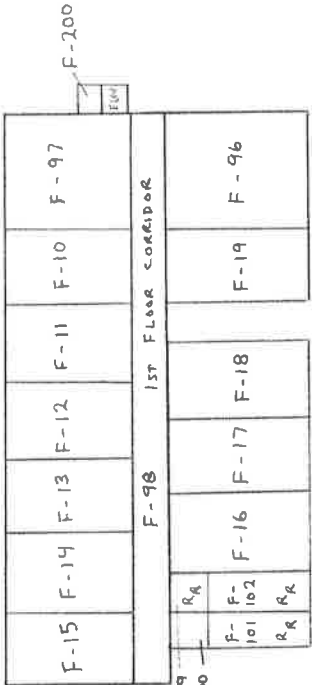
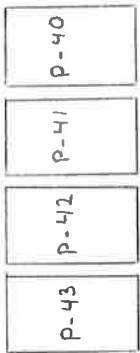


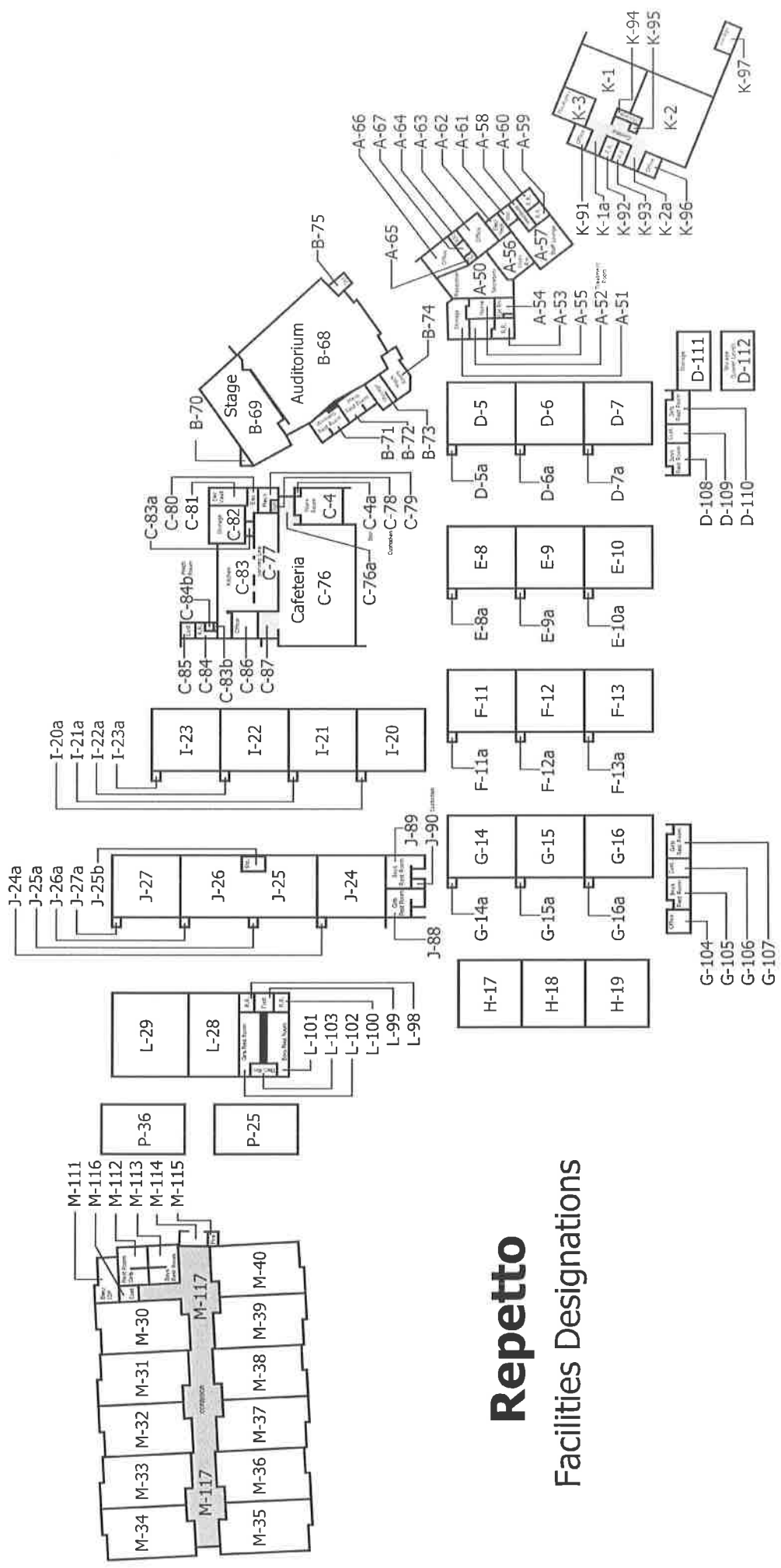


MARGUERITA

Facilities Designations

PARK





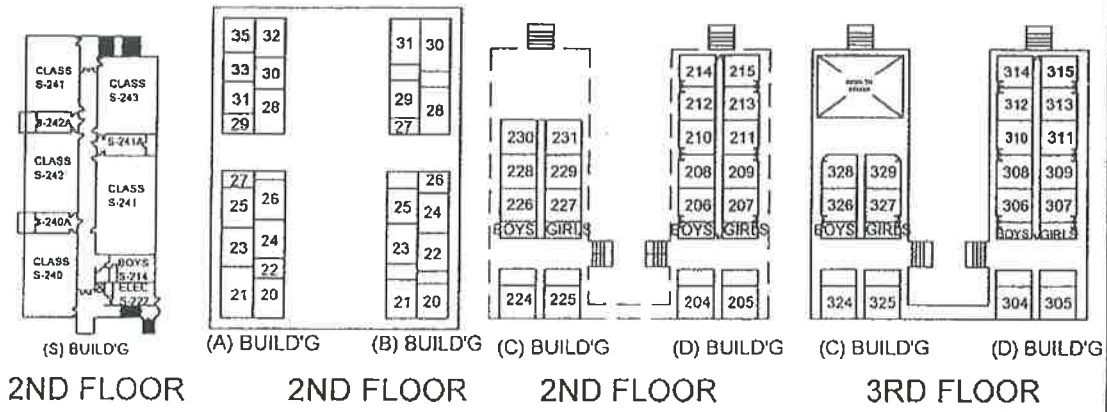
Repetto

Facilities Designations

P-35

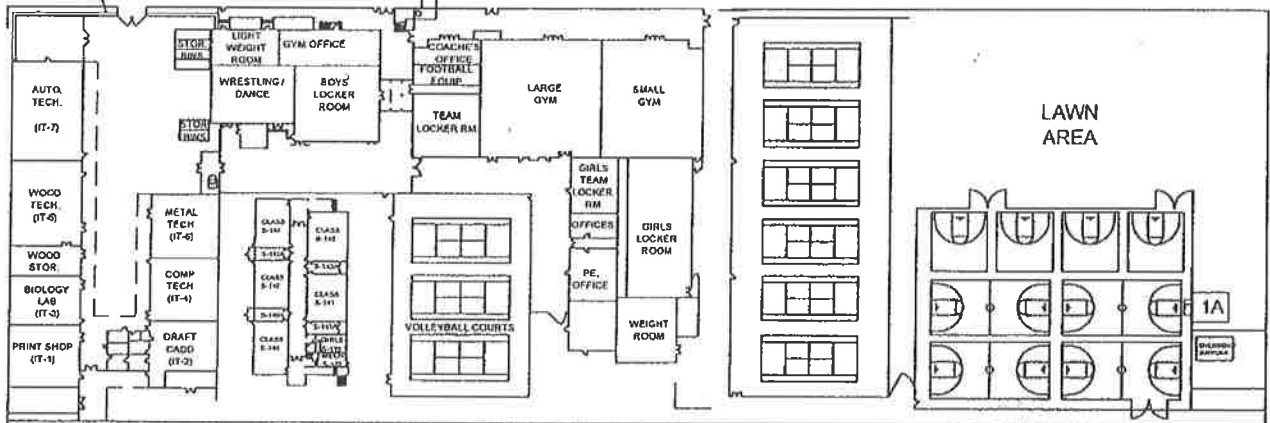
P-34

ALHAMBRA HIGH SCHOOL SITE MAP

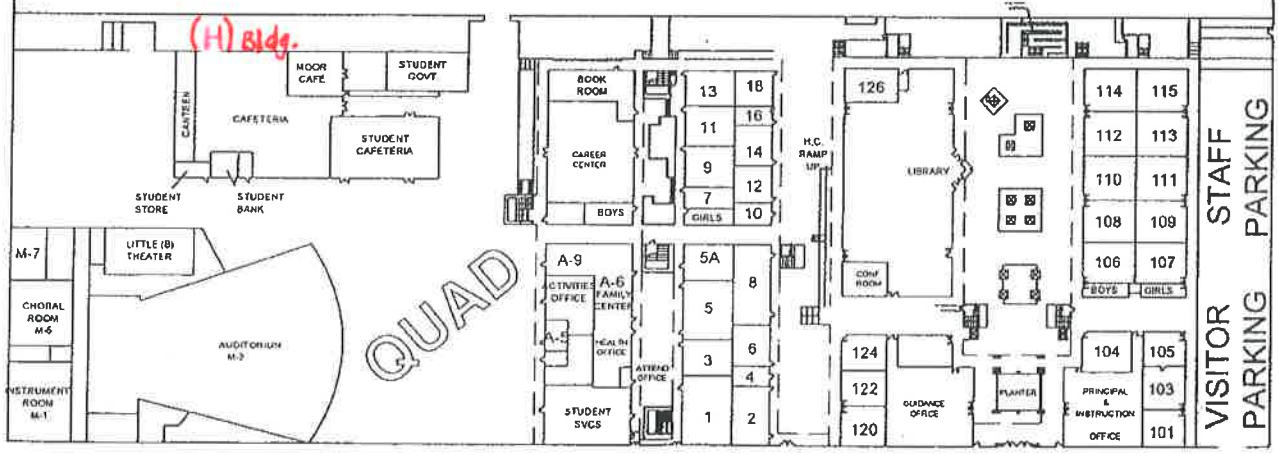


FOURTH STREET

COMMO. WEALTH AVE.



THIRD STREET



SECOND STREET



ALHAMBRA HIGH SCHOOL

101 S. 2ND ST. - (626) 308-2342

THIS SCHOOL MAP WAS DRAWN BY: FELIX NG, HUA WEI LAUNG, ALAN JUNG, DYLAN LOPEZ AND IS MAINTAINED BY MR. MOTTA'S ARCH 3-4 CLASS

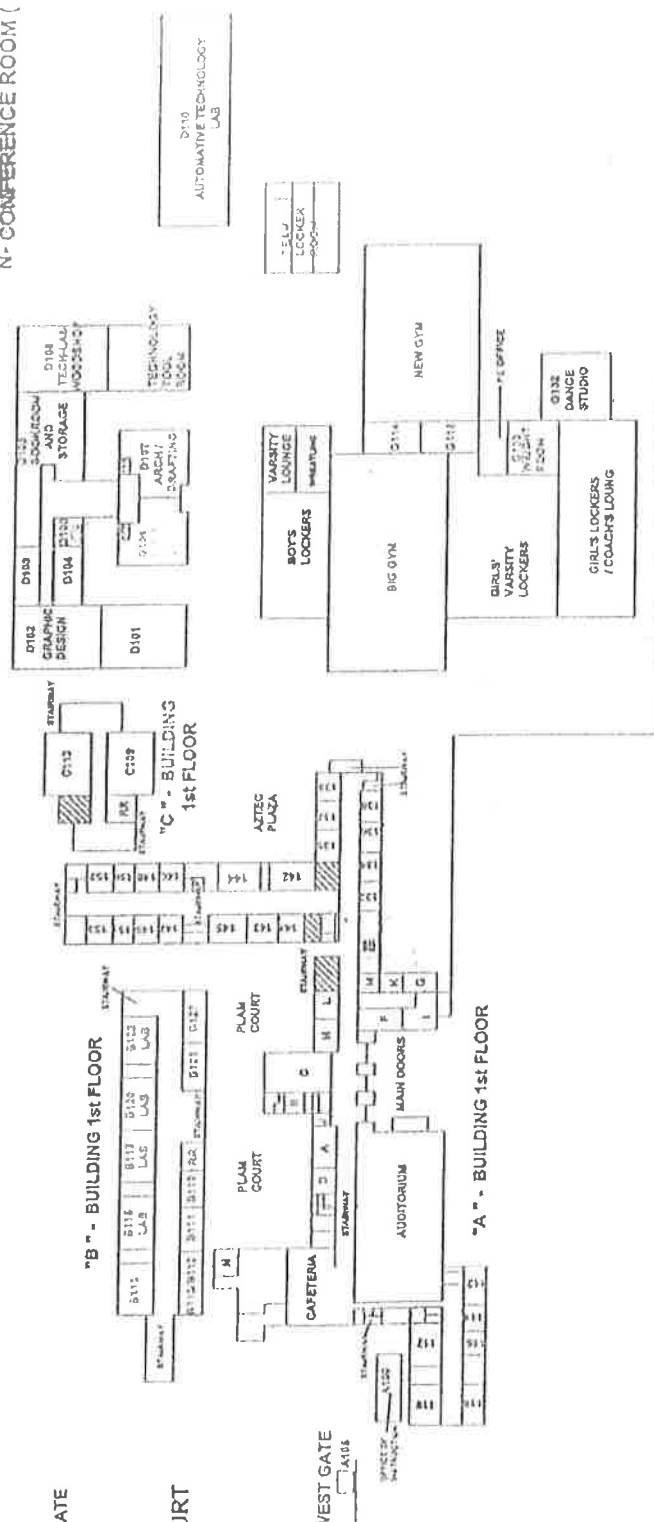
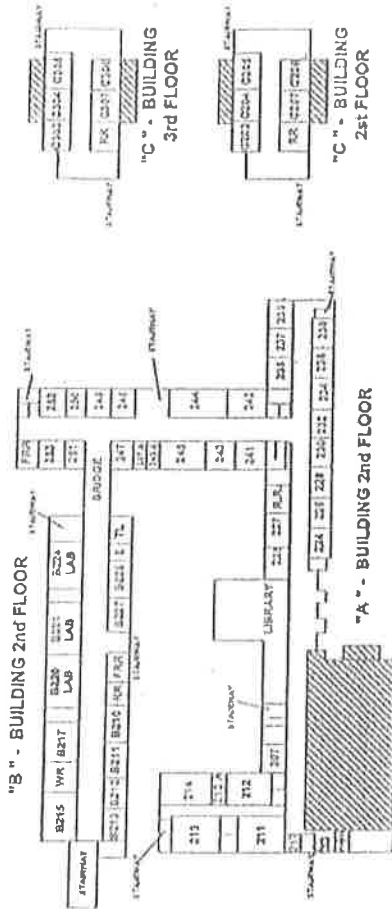
REV. 08/24/12

MARK KEPPEL HIGH SCHOOL

501 EAST HELLMAN AVE.
ALHAMBRA, CA 91801

DRAWN BY: SEP 2010
DATE:

- A- PRINCIPAL'S OFFICE
- B- ASST. PRINCIPAL OFFICE
- C- GUIDANCE CENTER
- D- ACTIVITIES OFFICE
- E- CAREER CENTER
- F- HEALTH OFFICE
- G- CONFERENCE ROOM (AZTEC)
- H- STUDENTS SERVICES
- I- TEACHERS LOUNGE
- J- STUDENT BANK
- K- ATTENDANCE OFFICE
- L- XEROX / MAIL ROOM
- M- DATA CLERK
- N- CONFERENCE ROOM (PRINCIPAL'S)

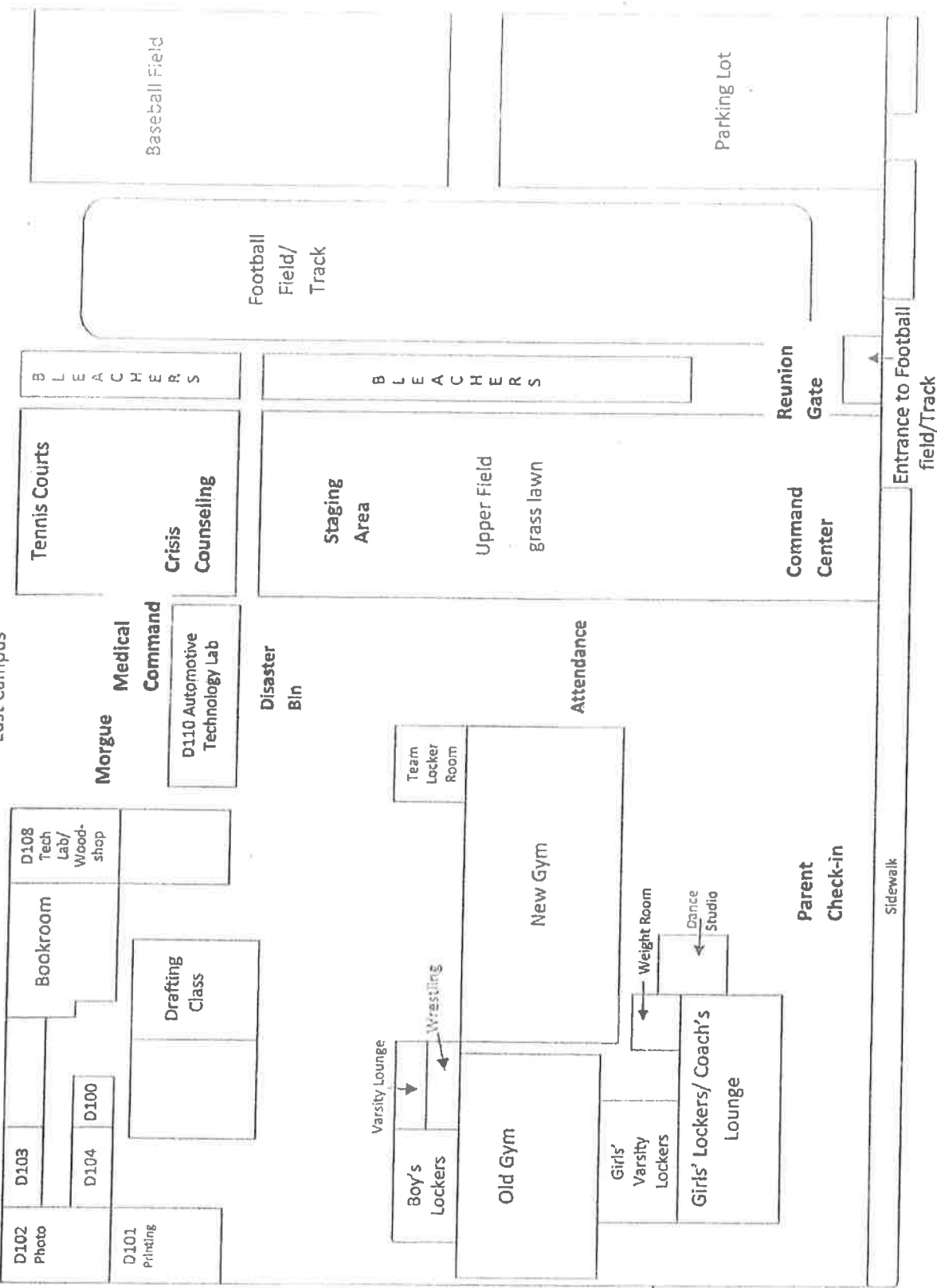


WEST CAMPUS

PARKING LOT

Gate

East Campus



Hellman Avenue