

LEA Name : Indiana Area SD
Address : 501 E Pike
Indiana, PA 15701

County : Indiana
AUN Number : 128323703
LEA Type : SD

Annual Financial Report Accuracy Certification Statement

For Fiscal Year Ending
6/30/2017

Pennsylvania Department of Education
&
Office of Comptroller Operations
PDE-2056: Intermediate Unit
PDE-2057: School District, AVTS/CTC, Charter School,
and Special Program Jointure

CERTIFICATION: By signing this page I agree that the electronic data submitted is a complete and accurate statement of the financial operations and status of the local education agency for the fiscal year. It has been prepared in accordance with generally accepted accounting principles and established Commonwealth of PA reporting guidelines.



Chief School Administrator Signature

11/1/17

Date



Board Secretary Signature

11/1/17

Date

Jared Cronauer

Contact Person

(724)463-8713 Ext :

Contact Person Telephone Number

jcronauer@iasd.cc

Contact Person E-mail Address

Contact Person Fax Number

Audit Certification
Annual Financial Report:
For Fiscal Year Ending **6/30/2017**
(Pursuant to PA School Code Section 218(b))

LEA Name : Indiana Area SD
AUN Number : 128323703
County : Indiana

Audit Certification Due: 12/31/2017

This certification is applicable to the Annual Financial Report data submitted through the Consolidated Financial Reporting System on: _____
Date

Auditing Firm:

Auditor Contact Name:

Auditor Phone:

Auditor E-mail:

CERTIFICATION: By signing this page I agree that the financial statements of the school have been properly audited as noted above pursuant to Article XXIV, and in the auditor's professional opinion, the Annual Financial Report (PDE-2057) submitted on the date referenced is materially consistent with the audited financial statements.

Chief School Administrator

Board Secretary

Signature

Date

Signature

Date

Jared Cronauer

Contact Person

jcronauer@iasd.cc

Contact Person E-mail Address

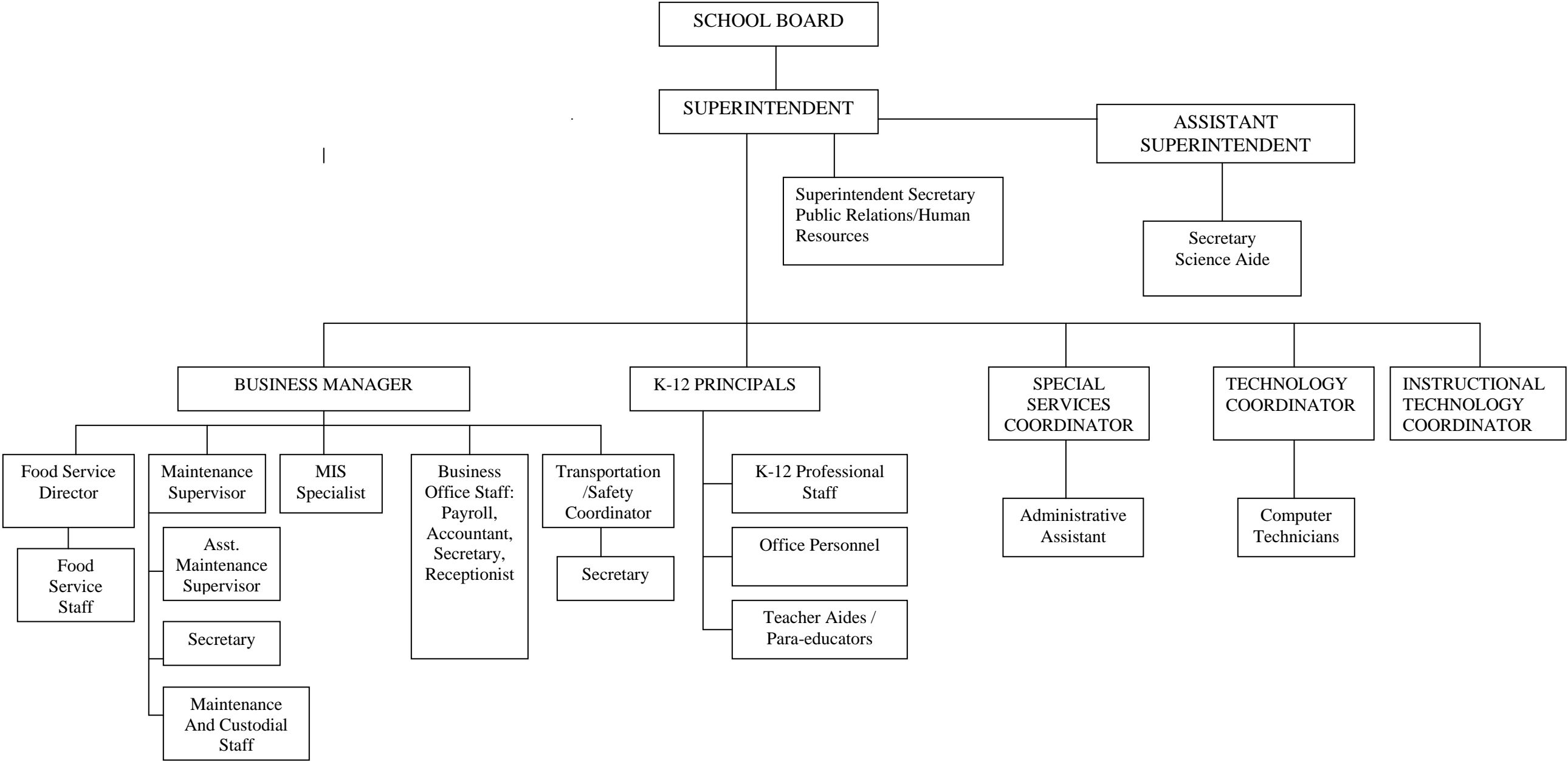
(724)463-8713

Ext :

Contact Person Telephone Number

Contact Person Fax Number

INDIANA AREA SCHOOL DISTRICT ORGANIZATIONAL CHART



<u>Val Number</u>	<u>Description</u>	<u>Justification</u>
10150	NAG: Balance Sheet Govt Funds:Data has been entered for Fund 32, Line 0400 - Due to Other Funds. Since transfers out of Fund 32 are not allowed, this line should only be utilized when recording transactions related to interfund reimbursements. Please make corrections or provide brief details of the interfund reimbursement. NAG Fund 32, Line 0400: \$32,005.00	All checks are paid from the General Fund. The other funds then reimburse the General Fund.
12195	REG: Current Year AFR Beginning Fund Balance must equal Prior Year AFR Ending Fund Balance. Justifications to this error must fully explain the situation that prompted a fund balance restatement. "Auditor Adjustment" is not a sufficient justification. Total Govt Funds, Beg Bal: \$8,838,633.00 PY Ending Bal, Govt Funds: \$8,859,035.00	Current year capital assets were transferred from Capital Reserve Fund to the Food Service Fund.
12206	REG - Fund 32: Current Year AFR Beginning Fund Balance must equal Prior Year AFR Ending Fund Balance. Justifications to this error must fully explain the situation that prompted a fund balance restatement. "Auditor Adjustment" is not a sufficient justification. REG Fund 32, Beg Fund Bal: \$1,608,687.00 PY Ending Fund Balance: \$1,629,089.00	Current year capital assets were transferred from Capital Reserve Fund to the Food Service Fund.
16230	REP Fund 51 – Net Position - Beginning of Fiscal Year must equal Prior Year AFR, Net Position - End of Year. Justifications to this error must fully explain the situation that prompted a fund balance restatement. "Auditor Adjustment" is not a sufficient justification. REP Fund 51 – Net Position - Beginning of Fiscal Year: \$13,699.00 REP Fund 51, Prior Year AFR, Net Position - End of Year: \$-49,459.00	Capital assets from prior years were transferred from Capital Reserve Fund to the Food Service Fund.
50076	SOIN: Reductions to Governmental Fund Authority Building Obligations have been reported however, no expenditures have been reported in Functions 5110 or 5120, Object 920 for ABO principal payments. Correct or provide a justification. SOIN, ABO Reductions: \$123,537.00 Expenditure Detail, Function 5110 and 5120, Object 920: \$0.00	All debt service is paid from the debt service fund. Therefore the expenditure in the General Fund is coded to 10-5240-939.
50160	SOIN: All Governmental Fund General Obligation Bonds must include an amount for Interest Paid during Fiscal Year. Correct data or enter a justification.	The 2016 General Obligation Bonds were issued in December 2016. The first payment on the bonds were not made until August 2017.
50280	SOIN: Current Year AFR amount must equal Prior Year AFR amount. SOIN, Beg Bal, Gen Obl Bnds: \$31,498,000.00 PY Ending Bal, Gen Obl Bnds: \$31,427,000.00	The beginning balance for 2016-17 of \$31,498,000 is correct. The ending balance of \$31,427,000 was reported error.

Amounts Expressed in Whole Dollars

<u>General Fund</u>	<u>Public Purpose Trust</u>	<u>Other Compt Approved</u>	<u>Athletic / Activity</u>	<u>Capital Reserve (690.</u>
<u>(10)</u>	<u>(27)</u>	<u>(28)</u>	<u>(29)</u>	<u>1850)</u>
				<u>(31)</u>

Assets And Deferred Outflows Of Resources

Assets

0100 Cash and Cash Equivalents	1,290,620
0110 Investments	6,988,150
0120 Taxes Receivable	2,850,184
0130 Due From Other Funds	325,566
0141 Due From Other Governments	136,770
0142 State Revenue Receivable	1,684,293
0143 Federal Revenue Receivable	143,274
0145 Other Intergovernmental Revenue Receivable	
0146 Due from Primary Government	
0147 Due from Component Unit	
0150 Other Receivables	334,887
0170 Inventories	
0180 Prepaid Expenses (Expenditures)	1,161
0190 Other Current Assets	

Total Assets	\$13,754,905
---------------------	---------------------

0910 Deferred Outflows of Resources

Total Assets And Deferred Outflows Of Resources	\$13,754,905
--	---------------------

Amounts Expressed in Whole Dollars	<u>Capital Reserve (1431)</u> <u>(32)</u>	<u>Other Capital Projects</u> <u>Fund</u> <u>(39)</u>	<u>Debt Service</u> <u>(40)</u>	<u>Permanent</u> <u>(90)</u>	<u>Total Governmental</u> <u>Funds</u>
Assets And Deferred Outflows Of Resources					
Assets					
0100 Cash and Cash Equivalents	1,351,488	8,948,189			11,590,297
0110 Investments					6,988,150
0120 Taxes Receivable					2,850,184
0130 Due From Other Funds	424,835	2,526			752,927
0141 Due From Other Governments					136,770
0142 State Revenue Receivable					1,684,293
0143 Federal Revenue Receivable					143,274
0145 Other Intergovernmental Revenue Receivable					
0146 Due from Primary Government					
0147 Due from Component Unit					
0150 Other Receivables					334,887
0170 Inventories					
0180 Prepaid Expenses (Expenditures)					1,161
0190 Other Current Assets					
Total Assets	\$1,776,323	\$8,950,715			\$24,481,943
0910 Deferred Outflows of Resources					
Total Assets And Deferred Outflows Of Resources	\$1,776,323	\$8,950,715			\$24,481,943

Amounts Expressed in Whole Dollars

<u>General Fund</u>	<u>Public Purpose Trust</u>	<u>Other Compt Approved</u>	<u>Athletic / Activity</u>	<u>Capital Reserve (690.</u>
<u>(10)</u>	<u>(27)</u>	<u>(28)</u>	<u>(29)</u>	<u>1850)</u>
				<u>(31)</u>

Liabilities And Deferred Inflows Of Resources And Fund Balances

Liabilities

0400 Due to Other Funds	
0411 Due to Other Governments	
0412 Due to Primary Government	
0413 Due to Component Unit	
0420 Accounts Payable	571,408
0430 Contracts Payable	
0440 Current Portion of Long-Term Debt	
0450 Short-Term Payables	
0461 Accrued Salaries and Benefits	3,131,377
0462 Payroll Deductions and Withholding	2,123,803
0480 Unearned Revenues	10,934
0490 Other Current Liabilities	

Total Liabilities \$5,837,522

0950 Deferred Inflows of Resources	1,685,058
------------------------------------	-----------

Fund Balances

0810 Nonspendable Fund Balance	1,161
0820 Restricted Fund Balance	22,259
0830 Committed Fund Balance	750,000
0840 Assigned Fund Balance	14,000
0850 Unassigned Fund Balance	5,444,905

Total Fund Balances \$6,232,325

Total Liabilities, Deferred Inflows Of Resources And Fund Balances \$13,754,905

Amounts Expressed in Whole Dollars

	<u>Capital Reserve (1431)</u> <u>(32)</u>	<u>Other Capital Projects</u> <u>Fund</u> <u>(39)</u>	<u>Debt Service</u> <u>(40)</u>	<u>Permanent</u> <u>(90)</u>	<u>Total Governmental</u> <u>Funds</u>
Liabilities And Deferred Inflows Of Resources And Fund Balances					
Liabilities					
0400 Due to Other Funds	32,005	693,511			725,516
0411 Due to Other Governments					
0412 Due to Primary Government					
0413 Due to Component Unit					
0420 Accounts Payable	52,921	46,371			670,700
0430 Contracts Payable					
0440 Current Portion of Long-Term Debt					
0450 Short-Term Payables					
0461 Accrued Salaries and Benefits					3,131,377
0462 Payroll Deductions and Withholding					2,123,803
0480 Unearned Revenues					10,934
0490 Other Current Liabilities					
Total Liabilities	\$84,926	\$739,882			\$6,662,330
0950 Deferred Inflows of Resources					1,685,058
Fund Balances					
0810 Nonspendable Fund Balance					1,161
0820 Restricted Fund Balance	1,691,397	8,210,833			9,924,489
0830 Committed Fund Balance					750,000
0840 Assigned Fund Balance					14,000
0850 Unassigned Fund Balance					5,444,905
Total Fund Balances	\$1,691,397	\$8,210,833			\$16,134,555
Total Liabilities, Deferred Inflows Of Resources And Fund Balances	\$1,776,323	\$8,950,715			\$24,481,943

Amounts Expressed in Whole Dollars	<u>General Fund</u> <u>(10)</u>	<u>Public Purpose Trust</u> <u>(27)</u>	<u>Other Compt Approved</u> <u>(28)</u>	<u>Athletic / Activity</u> <u>(29)</u>	<u>Capital Reserve (690.</u> <u>1850)</u> <u>(31)</u>
Revenues					
6000 Revenue from Local Sources	34,342,898				
7000 Revenue from State Sources	18,549,169				
8000 Revenue from Federal Sources	823,382				
Total Revenues	\$53,715,449				
Expenditures					
1000 Instruction	34,711,391				
2000 Support Services	13,874,762				
3000 Operation of Non-Instructional Services	1,079,980				
4000 Facilities Acquisition, Construction and Improvement Services					
5110 Debt Service					
5130 Refund of Prior Year Revenues / Receipts	63				
Total Expenditures	\$49,666,196				
Excess (Deficiency) Of Revenues Over Expenditures	\$4,049,253				
Other Financing Sources (Uses)					
9110 Face Value of Bonds Issued					
9120 Proceeds from Refunding of Bonds					
9130 Bond Premiums					
9200 Proceeds from Extended-Term Financing					
9300 Interfund Transfers - IN					
9400 Sale of or Compensation for Loss of Fixed Assets					
9710 Transfers from Component Units					
9720 Transfers from Primary Governments					
9910 Other Financing Sources Not Listed in the 9000 Series					
9990 Insurance Recoveries					
5120 Debt Service – Refunded Bonds					
5150 Bond Discounts					
5200 Interfund Transfers – Out	3,778,820				
5300 Transfers Out to Component Units/Primary Governments					
Total Other Financing Sources (Uses)	(\$3,778,820)				

Amounts Expressed in Whole Dollars	<u>Capital Reserve (1431)</u> <u>(32)</u>	<u>Other Capital Projects</u> <u>Fund</u> <u>(39)</u>	<u>Debt Service</u> <u>(40)</u>	<u>Permanent</u> <u>(90)</u>	<u>Total Governmental</u> <u>Funds</u>
Revenues					
6000 Revenue from Local Sources	7,513	35,592			34,386,003
7000 Revenue from State Sources					18,549,169
8000 Revenue from Federal Sources					823,382
Total Revenues	\$7,513	\$35,592			\$53,758,554
Expenditures					
1000 Instruction		249,782			34,961,173
2000 Support Services	167,942	21	325,924		14,368,649
3000 Operation of Non-Instructional Services					1,079,980
4000 Facilities Acquisition, Construction and Improvement Services	79,536	2,516,123			2,595,659
5110 Debt Service			3,454,942		3,454,942
5130 Refund of Prior Year Revenues / Receipts					63
Total Expenditures	\$247,478	\$2,765,926	\$3,780,866		\$56,460,466
Excess (Deficiency) Of Revenues Over Expenditures	(\$239,965)	(\$2,730,334)	(\$3,780,866)		(\$2,701,912)
Other Financing Sources (Uses)					
9110 Face Value of Bonds Issued			9,925,000		9,925,000
9120 Proceeds from Refunding of Bonds					
9130 Bond Premiums			74,037		74,037
9200 Proceeds from Extended-Term Financing					
9300 Interfund Transfers - IN	322,675	9,673,113	3,454,942		13,450,730
9400 Sale of or Compensation for Loss of Fixed Assets					
9710 Transfers from Component Units					
9720 Transfers from Primary Governments					
9910 Other Financing Sources Not Listed in the 9000 Series					
9990 Insurance Recoveries					
5120 Debt Service – Refunded Bonds					
5150 Bond Discounts					
5200 Interfund Transfers – Out			9,673,113		13,451,933
5300 Transfers Out to Component Units/Primary Governments					
Total Other Financing Sources (Uses)	\$322,675	\$9,673,113	\$3,780,866		\$9,997,834

Amounts Expressed in Whole Dollars	<u>General Fund</u> <u>(10)</u>	<u>Public Purpose Trust</u> <u>(27)</u>	<u>Other Compt Approved</u> <u>(28)</u>	<u>Athletic / Activity</u> <u>(29)</u>	<u>Capital Reserve</u> <u>(690.</u> <u>1850)</u> <u>(31)</u>
Special And Extraordinary Items					
9920 Special Items – Gains					
9930 Extraordinary Items – Gains					
5520 Special Items – Losses					
5530 Extraordinary Items – Losses					
Net Change In Fund Balances	\$270,433				
Fund Balance					
0001 Fund Balance - Beginning of Fiscal Year	5,961,892				
Fund Balance - End Of Year	\$6,232,325				

Amounts Expressed in Whole Dollars	<u>Capital Reserve (1431)</u> <u>(32)</u>	<u>Other Capital Projects</u> <u>Fund</u> <u>(39)</u>	<u>Debt Service</u> <u>(40)</u>	<u>Permanent</u> <u>(90)</u>	<u>Total Governmental</u> <u>Funds</u>
Special And Extraordinary Items					
9920 Special Items – Gains					
9930 Extraordinary Items – Gains					
5520 Special Items – Losses					
5530 Extraordinary Items – Losses					
Net Change In Fund Balances	\$82,710	\$6,942,779			\$7,295,922
Fund Balance					
0001 Fund Balance - Beginning of Fiscal Year	1,608,687	1,268,054			8,838,633
Fund Balance - End Of Year	\$1,691,397	\$8,210,833			\$16,134,555

Amounts Expressed in Whole Dollars	<u>Food Service</u> (51)	<u>Child Care</u> <u>Operations</u> (52)	<u>Other Enterprise</u> (58)	<u>TOTAL</u>	<u>Internal Service</u> (60)
Assets And Deferred Outflows Of Resources					
Current Assets					
0100 Cash and Cash Equivalents	17,426		38,630	56,056	
0110 Investments					
0130 Due From Other Funds			80	80	
0141 Due From Other Governments					
0142 State Revenue Receivable	906			906	
0143 Federal Revenue Receivable	14,621			14,621	
0146 Due from Primary Government					
0147 Due from Component Unit					
0150 Other Receivables	4,980			4,980	
0170 Inventories	10,233			10,233	
0180 Prepaid Expenses (Expenditures)					
0190 Other Current Assets					
Total Current Assets	\$48,166		\$38,710	\$86,876	
Noncurrent Assets					
0211 Land					
0212 Site Improvements (Net)					
0220 Buildings and Building Improvements (Net)					
0230 Machinery, Equipment and Furniture (Net)	147,059			147,059	
0250 Construction in Progress					
0260 Long Term Prepayments					
0290 Other Noncurrent Assets					
Total Noncurrent Assets	\$147,059			\$147,059	
0910 Deferred Outflows of Resources					
Total Assets And Deferred Outflows Of Resources	\$195,225		\$38,710	\$233,935	

Amounts Expressed in Whole Dollars	<u>Food Service</u> <u>(51)</u>	<u>Child Care</u> <u>Operations</u> <u>(52)</u>	<u>Other Enterprise</u> <u>(58)</u>	<u>TOTAL</u>	<u>Internal Service</u> <u>(60)</u>
Liabilities And Deferred Inflows Of Resources And Net Position					
Current Liabilities					
0400 Due to Other Funds	23,957		3,534	27,491	
0411 Due to Other Governments					
0413 Due to Component Unit					
0420 Accounts Payable	35,008		455	35,463	
0430 Contracts Payable					
0440 Current Portion of Long-Term Debt					
0450 Short-Term Payables					
0461 Accrued Salaries and Benefits					
0462 Payroll Deductions and Withholding					
0480 Unearned Revenues	31,834			31,834	
0490 Other Current Liabilities					
Total Current Liabilities	\$90,799		\$3,989	\$94,788	
Noncurrent Liabilities					
0510 Bonds Payable					
0520 Extended-Term Financing Agreements Payable					
0530 Lease-Purchase Obligations					
0540 Accumulated Compensated Absences					
0550 Authority Lease Obligations					
0560 Other Post-Employment Benefits (OPEB)					
0570 Net Pension Liability					
0599 Other Noncurrent Liabilities					
Total Noncurrent Liabilities					
Total Liabilities	\$90,799		\$3,989	\$94,788	
0950 Deferred Inflows of Resources					
Net Position					
0791 Net Investment in Capital Assets		147,059		147,059	
0008 Restricted Net Position (0792 – 0798)					
0799 Unrestricted Net Position		(42,633)	34,721	(7,912)	
Total Net Position		\$104,426	\$34,721	\$139,147	
Total Liabilities And Deferred Inflows Of Resources And Net Position		\$195,225	\$38,710	\$233,935	

Amounts Expressed in Whole Dollars	<u>Food Service</u> <u>(51)</u>	<u>Child Care Operations</u> <u>(52)</u>	<u>Other Enterprise</u> <u>(58)</u>	<u>TOTAL</u>	<u>Internal Service</u> <u>(60)</u>
Operating Revenues					
6600 Food Service Revenue	541,015			541,015	
0071 Charges for Services			18,055	18,055	
0072 Other Operating Revenue					
Total Operating Revenues	\$541,015		\$18,055	\$559,070	
Operating Expenses					
100 Personnel Services – Salaries	128,956			128,956	
200 Personnel Services – Employee Benefits	123,610			123,610	
300 Purchased Professional and Technical Services	838			838	
400 Purchased Property Services					
500 Other Purchased Services	954,154			954,154	
600 Supplies	2,309		8,009	10,318	
740 Depreciation	23,793			23,793	
810 Dues and Fees	4,452		30	4,482	
890 Miscellaneous Expenditures					
Total Operating Expenses	\$1,238,112		\$8,039	\$1,246,151	
Operating Income (Loss)	(\$697,097)		\$10,016	(\$687,081)	
Non Operating Revenues (Expenses)					
6500 Earnings on Investments	19		14	33	
6920 Contributions and Donations from Private Sources	1,200			1,200	
6930 Gains or Losses on Sale of Fixed Assets					
6991 Refunds of a Prior Year Expenditure					
7000 Revenue from State Sources	62,737			62,737	
8000 Revenue from Federal Sources	702,263			702,263	
820 Claims and Judgments Against the LEA					
830 Interest					
TOTAL Non Operating Revenues (Expenses)	\$766,219		\$14	\$766,233	
Income (Loss) Before Contributions And Transfers	\$69,122		\$10,030	\$79,152	

Amounts Expressed in Whole Dollars	<u>Food Service</u> <u>(51)</u>	<u>Child Care Operations</u> <u>(52)</u>	<u>Other Enterprise</u> <u>(58)</u>	<u>TOTAL</u>	<u>Internal Service</u> <u>(60)</u>
Contributions, Transfers, and Special and Extraordinary Items					
5200 Interfund Transfers – Out					
5300 Transfers Out to Component Units/Primary Governments					
5520 Special Items – Losses					
5530 Extraordinary Items – Losses					
9300 Interfund Transfers - IN	1,203			1,203	
9500 Capital Contributions					
9700 Transfers IN From Component Units/Primary Governments					
9920 Special Items – Gains					
9930 Extraordinary Items – Gains					
Change In Net Position	\$70,325		\$10,030	\$80,355	
0002 Net Position - Beginning of Fiscal Year	13,699		24,691	38,390	
0003 Accounting Changes / Residual Equity Transfers	20,402			20,402	
Net Position - End Of Year	\$104,426		\$34,721	\$139,147	

Amounts Expressed in Whole Dollars	<u>Food Service</u> <u>(51)</u>	<u>Child Care Operations</u> <u>(52)</u>	<u>Other Enterprise</u> <u>(58)</u>	<u>TOTAL</u>	<u>Internal Service(60)</u>
Cash Flows From Operating Activities					
0011 Cash Receipts From Users	540,582		18,360	558,942	
0012 Cash Receipts From Assessments Made to Other Funds					
0013 Cash Receipts From Earnings on Investments					
0014 Cash Receipts From Other Operating Revenue					
0015 Cash Payments To Employees For Services	128,956			128,956	
0016 Cash Payments For Insurance Claims					
0017 Cash Payments To Suppliers For Goods and Services	1,153,037		4,050	1,157,087	
0018 Cash Payments For Other Operating Expenses					
Net Cash Provided By (Used For) Operating Activities	(\$741,411)		\$14,310	(\$727,101)	
Cash Flows From Non-Capital Financing Activities					
0021 Receipts From Local Sources - 6000	1,200			1,200	
0022 Receipts From State Sources - 7000	61,831			61,831	
0023 Receipts From Federal Sources -8000	687,642			687,642	
0024 Notes and Loans Received (Repaid)					
0025 Interest Paid on Notes/Loans - 5100-830					
0026 Operating Transfers In (Out)/Residual Equity Trans					
0027 Operating Transfers In (Out) Primary Government / Comp Unit	1,203			1,203	
0028 Receipts From Refund of Prior Year Expenditures - 6991					
0029 Special and Extraordinary Gains (losses)					
Net Cash Prov By (Used for) Non-Capital Financing Activities	\$751,876			\$751,876	
Cash Flows From Capital and Related Financing Activities					
0031 Payments For Fac Acq, Const, and Imp - 4000					
0032 Gain / (Loss) on Sale of Fixed Assets - 6930					
0033 Proceeds From Extended Term Financing - 9200					
0034 Principal Paid on Financing Agreements					
0035 Interest Paid on Financing Agreements - 5100-830					
0036 (Inc) Dec in Contributed Capital					
Net Cash Prov By (Used for) Capital and Related Financing Activities					
Cash Flows From Investing Activities					
0041 Earnings on Investments - 6500	19		14	33	
0042 Purchase of Inv Securities / Deposits to Inv Pools					
0043 Receipts From Investment Pool Withdrawals					
0044 Proceeds from Sale and Maturity of Inv Securities					
0045 Loans Received (Paid)					
Net Cash Prov By (Used for) Investing Activities	\$19		\$14	\$33	

	<u>Food Service</u> <u>(51)</u>	<u>Child Care Operations</u> <u>(52)</u>	<u>Other Enterprise</u> <u>(58)</u>	<u>TOTAL</u>	<u>Internal Service</u> <u>(60)</u>
Net Increase (Decrease) in Cash Flows	10,484		14,324	24,808	
0004 Cash and Cash Equivalents Beginning of Year	6,942		24,306	31,248	
Cash and Cash Equivalents at Year End	\$17,426		\$38,630	\$56,056	

Reconciliation of Operating Income (Loss) To Net Cash Provided by (Used For) Operating Activities

0005 Operating Income (Loss) per REP	(697,097)		10,016	(687,081)	
Adjustments					
0051 Depreciation and Net Amortization	23,793			23,793	
0052 Provision for Uncollectible Accounts					
0053 Other Adjustments					
Effect of Changes in Assets, Liabilities, Deferred Outflows and Deferred Inflows					
0054 (Inc) Dec In Accounts Receivable (0120-0150)	(4,007)			(4,007)	
0055 Advances to Other Funds (0160)					
0056 (Inc) Dec in Inventories (0170)	(4,822)			(4,822)	
0057 (Inc) Dec in Prepaid Expenses (0180)					
0058 (Inc) Dec in Other Current or Noncurrent Assets			305	305	
0064 Deferred Outflows (0910)					
0059 Inc (Dec) in Accounts Payable (0400-0450)	(62,852)		455	(62,397)	
0060 Inc (Dec) in Accrued Salaries/Benefits (0461)					
0065 Inc (Dec) in Net Pension Liabilities (0570)					
0066 Inc (Dec) in Other Postemp Benefit Oblig (0560)					
0061 Inc (Dec) in Payroll Deductions/Withholding (0462)					
0062 Inc (Dec) in Unearned Revenue (0480)	3,574			3,574	
0063 Inc (Dec) in Other Current or Noncurrent Liabilities			3,534	3,534	
0067 Deferred Inflows (0950)					
Total Adjustments	(\$44,314)		\$4,294	(\$40,020)	
Cash Provided By (Used for) Total	(\$741,411)		\$14,310	(\$727,101)	

COMBINED STATEMENT OF CASH FLOWS
SCHEDULE OF NONCASH INVESTING, CAPITAL, AND FINANCING ACTIVITIES

Explanation of Transaction and Balance Sheet Effect	Amount
Total	

LEA : 128323703 Indiana Area SD

Printed 11/6/2017 9:02:15 AM

Amounts Expressed in Whole Dollars

Private Purpose Trust
(71)

Investment Trust
(72)

Pension Trust
(73)

Activity
(81)

Assets And Deferred Outflows Of Resources

Assets

0100 Cash and Cash Equivalents				92,844
0110 Investments				10,000
0130 Due From Other Funds				
0147 Due from Component Unit				
0150 Other Receivables				
0170 Inventories				
0180 Prepaid Expenses (Expenditures)				
0190 Other Current Assets				
0220 Buildings and Building Improvements (Net)				
0230 Machinery, Equipment and Furniture (Net)				

Total Assets **\$102,844**

0910 Deferred Outflows of Resources

Total Assets And Deferred Outflows Of Resources **\$102,844**

LEA : 128323703 Indiana Area SD

Printed 11/6/2017 9:02:15 AM

Amounts Expressed in Whole Dollars

<u>Other Agency</u>	<u>Discrete Component Units</u>	<u>Discrete Component Units</u>	<u>Total Fiduciary Funds</u>
(89)	(98)	(99)	

Assets And Deferred Outflows Of Resources

Assets

0100 Cash and Cash Equivalents			92,844
0110 Investments			10,000
0130 Due From Other Funds			
0147 Due from Component Unit			
0150 Other Receivables			
0170 Inventories			
0180 Prepaid Expenses (Expenditures)			
0190 Other Current Assets			
0220 Buildings and Building Improvements (Net)			
0230 Machinery, Equipment and Furniture (Net)			

Total Assets			\$102,844
---------------------	--	--	------------------

0910 Deferred Outflows of Resources

Total Assets And Deferred Outflows Of Resources			\$102,844
--	--	--	------------------

LEA : 128323703 Indiana Area SD

Printed 11/6/2017 9:02:15 AM

Amounts Expressed in Whole Dollars	<u>Private Purpose Trust</u> (71)	<u>Investment Trust</u> (72)	<u>Pension Trust</u> (73)	<u>Activity</u> (81)
Liabilities, Deferred Inflows Of Resources And Net Position				
Liabilities				
0400 Due to Other Funds				
0411 Due to Other Governments				
0412 Due to Primary Government				
0413 Due to Component Unit				
0420 Accounts Payable				
0430 Contracts Payable				
0450 Short-Term Payables				
0461 Accrued Salaries and Benefits				
0462 Payroll Deductions and Withholding				
0480 Unearned Revenues				
0490 Other Current Liabilities				102,844
Total Liabilities				\$102,844
0950 Deferred Inflows of Resources				
Net Position				
0791 Net Investment in Capital Assets				
0009 Restricted Net Position (0792 – 0798)				
0799 Unrestricted Net Position				
Total Net Position				
Total Liabilities, Deferred Inflows Of Resources And Net Position				\$102,844

LEA : 128323703 Indiana Area SD

Printed 11/6/2017 9:02:15 AM

Amounts Expressed in Whole Dollars	<u>Other Agency</u> (89)	<u>Discrete Component Units</u> (98)	<u>Discrete Component Units</u> (99)	<u>Total Fiduciary Funds</u>
Liabilities, Deferred Inflows Of Resources And Net Position				
Liabilities				
0400 Due to Other Funds				
0411 Due to Other Governments				
0412 Due to Primary Government				
0413 Due to Component Unit				
0420 Accounts Payable				
0430 Contracts Payable				
0450 Short-Term Payables				
0461 Accrued Salaries and Benefits				
0462 Payroll Deductions and Withholding				
0480 Unearned Revenues				
0490 Other Current Liabilities				102,844
Total Liabilities				\$102,844
0950 Deferred Inflows of Resources				
Net Position				
0791 Net Investment in Capital Assets				
0009 Restricted Net Position (0792 – 0798)				
0799 Unrestricted Net Position				
Total Net Position				
Total Liabilities, Deferred Inflows Of Resources And Net Position				\$102,844

	<u>Revenue Reported In Current Year</u>	<u>Current Year Tax Accrual</u>	<u>Prior Year Tax Accrual</u>	<u>Taxes Collected In Current Year</u>
<u>Revenue from Local Sources</u>				
6111 Current Real Estate Taxes	27,288,610.78			27,288,610.78
6113 Public Utility Realty Taxes	35,396.79			35,396.79
6114 Payments in Lieu of Current Taxes - State / Local	141,435.63			141,435.63
6151 Current Act 511 Earned Income Taxes	3,657,743.78	742,674.59	798,553.38	3,713,622.57
6153 Current Act 511 Real Estate Transfer Taxes	285,447.26	28,408.95	57,619.62	314,657.93
6411 Delinquent Real Estate Taxes	1,468,559.50	416,659.97	291,048.62	1,342,948.15
6451 Delinquent Act 511 Earned Income Taxes	156,259.46	12,022.36	29,033.38	173,270.48
6500 Earnings on Investments	65,797.20			
6700 Revenues from LEA Activities	69,287.02			
6821 State Revenue Received from Other Pennsylvania Public LEAs	320,309.50			
6831 Federal Revenue Received from Other Pennsylvania Public LEAs	2,511.58			
6832 Federal IDEA Revenue Received as Pass Through	359,384.75			
6910 Rentals	14,917.50			
6920 Contributions and Donations from Private Sources	47,810.31			
6942 Summer School Tuition	17,287.50			
6944 Receipts from Other LEAs in Pennsylvania - Education	270,912.23			
6949 Other Tuition from Patrons	15,200.00			
6991 Refunds of a Prior Year Expenditure	74,634.90			
6992 Energy Efficiency Revenues and Incentives	46,689.79			
6999 Other Revenues Not Specified Above	4,702.67			
TOTAL Revenue from Local Sources	\$34,342,898.15	\$1,199,765.87	\$1,176,255.00	\$33,009,942.33

**Revenue Reported
In Current Year**

Revenue from State Sources

7110 Basic Education Funding	9,225,368.01		
7160 Tuition for Orphans Subsidy	8,330.94		
7240 Driver Education - Student	945.00		
7271 Special Education funds for School-Aged Pupils	1,738,088.61		
7311 Pupil Transportation Subsidy	718,913.17		
7312 Nonpublic and Charter School Pupil Transportation Subsidy	36,960.00		
7320 Rental and Sinking Fund Payments / Building Reimbursement Subsidy	505,050.62		
7330 Health Services (Medical, Dental, Nurse, Act 25)	53,463.75		
7340 State Property Tax Reduction Allocation	1,033,169.62		
7505 Ready to Learn Block Grant	353,791.00		
7599 Other State Revenue Not Listed Elsewhere in the 7000 Series	371,240.72		
7810 State Share of Social Security and Medicare Taxes	898,724.55		
7820 State Share of Retirement Contributions	3,605,122.76		
TOTAL Revenue from State Sources	\$18,549,168.75		

	Revenue Reported In Current Year			
Revenue from Federal Sources				
8514 NCLB, Title I - Improving the Academic Achievement of the Disadvantaged	458,876.17			
8515 NCLB, Title II - Preparing, Training and Recruiting High Quality Teachers and Principals	170,200.48			
8516 NCLB, Title III - Language Instruction for Limited English Proficient and Immigrant Students	30,697.41			
8810 School-Based Access Medicaid Reimbursement Program (SBAP) Reimbursements (Access)	148,500.00			
8820 Medical Assistance Reimbursement for Administrative Claiming (Quarterly) Program	15,107.59			
TOTAL Revenue from Federal Sources	\$823,381.65			
TOTAL FROM ALL SOURCES	\$53,715,448.55	\$1,199,765.87	\$1,176,255.00	\$33,009,942.33

Revenue from Local Sources	34,342,898.15
Revenue from State Sources	18,549,168.75
Revenue from Federal Sources	823,381.65
Other Financing Sources	
TOTAL FROM ALL SOURCES	\$53,715,448.55

General Fund (10)

	<u>Total</u>
1000 Instruction	
100 Personnel Services – Salaries	
100 Personnel Services – Salaries	18,446,591.52
Total Personnel Services – Salaries	\$18,446,591.52
200 Personnel Services – Employee Benefits	
210 Group Insurance – Contracted Provider	3,783,525.86
220 Social Security Contributions	1,378,138.84
230 PSERS Retirement Contributions	5,472,669.89
250 Unemployment Compensation	19,873.97
260 Workers’ Compensation	57,331.56
280 Other Post-Employment Benefits (OPEB)	700,979.39
292 Health Savings Accounts	104,687.13
Total Personnel Services – Employee Benefits	\$11,517,206.64
300 Purchased Professional and Technical Services	
322 Professional Educational Services – Ius	347,442.00
323 Professional Educational Services – Other Educational Agencies	262.56
329 Professional Educational Services – Other	448,486.82
330 Other Professional Services	87,155.48
Total Purchased Professional and Technical Services	\$883,346.86
400 Purchased Property Services	
420 Utility Services	1,183.38
440 Rentals	80,715.09
Total Purchased Property Services	\$81,898.47
500 Other Purchased Services	
510 Student Transportation Services	141,908.32
530 Communications	8,854.22
550 Printing and Binding	480.00
561 Tuition To Other School Districts Within the State	146,962.33
562 Tuition To Pennsylvania Charter Schools	825,797.03
563 Tuition To Nonpublic Schools	540,997.50
564 Tuition To Career and Technology Centers	696,611.65
567 Tuition To Approved Private Schools (APS) and PA Chartered Schools for the Deaf and Blind	145,608.00
568 Tuition To Private Residential Rehabilitative Institutions (PRRI) [In-State] and Detention Centers	16,198.28
580 Travel	3,208.63
Total Other Purchased Services	\$2,526,625.96
600 Supplies	
610 General Supplies	538,663.57
620 Energy	7,277.35
630 Food	27,204.40
640 Books and Periodicals	400,067.57
650 Supplies & Fees – Technology Related	13,767.64
Total Supplies	\$986,980.53
700 Property	
752 Capital Equipment – Original and Additional	178,790.17

General Fund (10)

1000 Instruction	<u>Total</u>
700 <u>Property</u>	
756 Capitalized Technology Hardware and Equipment – Original	60,175.46
762 Capitalized Equipment - Replacement	9,003.25
Total Property	\$247,968.88
800 <u>Other Objects</u>	
810 Dues and Fees	11,365.78
860 Grants To Municipal and Community Service Organizations	9,406.03
Total Other Objects	\$20,771.81
Total 1000 Instruction	\$34,711,390.67

General Fund (10)

1100 Regular Programs – Elementary / Secondary

	<u>Elementary</u>	<u>Secondary</u>	<u>Federal</u>	<u>Total</u>
100 Personnel Services – Salaries				
100 Personnel Services – Salaries	8,051,538.41	6,853,594.78	411,870.01	15,317,003.20
Total Personnel Services – Salaries	\$8,051,538.41	\$6,853,594.78	\$411,870.01	\$15,317,003.20
200 Personnel Services – Employee Benefits				
210 Group Insurance – Contracted Provider	1,564,405.38	1,275,686.90	101,514.84	2,941,607.12
220 Social Security Contributions	601,772.65	509,600.92	31,153.52	1,142,527.09
230 PSERS Retirement Contributions	2,436,209.08	2,039,055.86	61,842.29	4,537,107.23
250 Unemployment Compensation	18,747.47	1,126.50		19,873.97
260 Workers' Compensation	22,780.48	16,844.54	2,059.25	41,684.27
280 Other Post-Employment Benefits (OPEB)	282,367.43	418,611.96		700,979.39
292 Health Savings Accounts	43,525.17	40,324.83	2,600.00	86,450.00
Total Personnel Services – Employee Benefits	\$4,969,807.66	\$4,301,251.51	\$199,169.90	\$9,470,229.07
300 Purchased Professional and Technical Services				
322 Professional Educational Services – Ius		900.00		900.00
329 Professional Educational Services – Other	272,064.14	152,496.63	8,406.32	432,967.09
330 Other Professional Services	4,567.70	8,914.30		13,482.00
Total Purchased Professional and Technical Services	\$276,631.84	\$162,310.93	\$8,406.32	\$447,349.09
400 Purchased Property Services				
440 Rentals	41,676.21	39,038.88		80,715.09
Total Purchased Property Services	\$41,676.21	\$39,038.88		\$80,715.09
500 Other Purchased Services				
510 Student Transportation Services	28,330.88	27,662.06	1,295.80	57,288.74
530 Communications	15.27	8,838.95		8,854.22
550 Printing and Binding		480.00		480.00
562 Tuition To Pennsylvania Charter Schools	236,568.37	343,505.14		580,073.51
568 Tuition To Private Residential Rehabilitative Institutions (PRRI) [In-State] and Detention Centers		16,198.28		16,198.28
580 Travel	3,099.63	109.00		3,208.63
Total Other Purchased Services	\$268,014.15	\$396,793.43	\$1,295.80	\$666,103.38
600 Supplies				
610 General Supplies	187,940.47	326,514.49	2,481.42	516,936.38
640 Books and Periodicals	229,244.50	152,200.36	8,997.53	390,442.39
650 Supplies & Fees – Technology Related		13,767.64		13,767.64
Total Supplies	\$417,184.97	\$492,482.49	\$11,478.95	\$921,146.41
700 Property				
752 Capital Equipment – Original and Additional	34,418.21	144,371.96		178,790.17
756 Capitalized Technology Hardware and Equipment – Original	12,493.86	47,681.60		60,175.46
762 Capitalized Equipment - Replacement	3,050.30	5,952.95		9,003.25
Total Property	\$49,962.37	\$198,006.51		\$247,968.88
800 Other Objects				
810 Dues and Fees	293.15	10,342.10		10,635.25
Total Other Objects	\$293.15	\$10,342.10		\$10,635.25
Total 1100 Regular Programs – Elementary / Secondary	\$14,075,108.76	\$12,453,820.63	\$632,220.98	\$27,161,150.37

LEA : 128323703 Indiana Area SD

Printed 11/6/2017 9:02:18 AM

Page - 4 of 28

General Fund (10)**1110 Regular Programs**

	<u>Elementary</u>	<u>Secondary</u>	<u>Federal</u>	<u>Total</u>
100 Personnel Services – Salaries				
100 Personnel Services – Salaries	8,051,538.41	6,853,594.78	411,870.01	15,317,003.20
Total Personnel Services – Salaries	\$8,051,538.41	\$6,853,594.78	\$411,870.01	\$15,317,003.20
200 Personnel Services – Employee Benefits				
210 Group Insurance – Contracted Provider	1,564,405.38	1,275,686.90	101,514.84	2,941,607.12
220 Social Security Contributions	601,772.65	509,600.92	31,153.52	1,142,527.09
230 PSERS Retirement Contributions	2,436,209.08	2,039,055.86	61,842.29	4,537,107.23
250 Unemployment Compensation	18,747.47	1,126.50		19,873.97
260 Workers' Compensation	22,780.48	16,844.54	2,059.25	41,684.27
280 Other Post-Employment Benefits (OPEB)	282,367.43	418,611.96		700,979.39
292 Health Savings Accounts	43,525.17	40,324.83	2,600.00	86,450.00
Total Personnel Services – Employee Benefits	\$4,969,807.66	\$4,301,251.51	\$199,169.90	\$9,470,229.07
300 Purchased Professional and Technical Services				
322 Professional Educational Services – Ius		900.00		900.00
329 Professional Educational Services – Other	272,064.14	152,496.63	8,406.32	432,967.09
330 Other Professional Services	4,567.70	8,914.30		13,482.00
Total Purchased Professional and Technical Services	\$276,631.84	\$162,310.93	\$8,406.32	\$447,349.09
400 Purchased Property Services				
440 Rentals	41,676.21	39,038.88		80,715.09
Total Purchased Property Services	\$41,676.21	\$39,038.88		\$80,715.09
500 Other Purchased Services				
510 Student Transportation Services	28,330.88	27,662.06	1,295.80	57,288.74
530 Communications	15.27	8,838.95		8,854.22
550 Printing and Binding		480.00		480.00
562 Tuition To Pennsylvania Charter Schools	236,568.37	343,505.14		580,073.51
568 Tuition To Private Residential Rehabilitative Institutions (PRRI) [In-State] and Detention Centers		16,198.28		16,198.28
580 Travel	3,099.63	109.00		3,208.63
Total Other Purchased Services	\$268,014.15	\$396,793.43	\$1,295.80	\$666,103.38
600 Supplies				
610 General Supplies	187,940.47	326,514.49	2,481.42	516,936.38
640 Books and Periodicals	229,244.50	152,200.36	8,997.53	390,442.39
650 Supplies & Fees – Technology Related		13,767.64		13,767.64
Total Supplies	\$417,184.97	\$492,482.49	\$11,478.95	\$921,146.41
700 Property				
752 Capital Equipment – Original and Additional	34,418.21	144,371.96		178,790.17
756 Capitalized Technology Hardware and Equipment – Original	12,493.86	47,681.60		60,175.46
762 Capitalized Equipment - Replacement	3,050.30	5,952.95		9,003.25
Total Property	\$49,962.37	\$198,006.51		\$247,968.88
800 Other Objects				
810 Dues and Fees	293.15	10,342.10		10,635.25
Total Other Objects	\$293.15	\$10,342.10		\$10,635.25
Total 1110 Regular Programs	\$14,075,108.76	\$12,453,820.63	\$632,220.98	\$27,161,150.37

General Fund (10)

1200 Special Programs – Elementary / Secondary	<u>Elementary</u>	<u>Secondary</u>	<u>Federal</u>	<u>Total</u>
100 Personnel Services – Salaries				
100 Personnel Services – Salaries	1,579,045.46	958,033.67	114,377.36	2,651,456.49
Total Personnel Services – Salaries	\$1,579,045.46	\$958,033.67	\$114,377.36	\$2,651,456.49
200 Personnel Services – Employee Benefits				
210 Group Insurance – Contracted Provider	497,437.81	272,960.04	18,398.39	788,796.24
220 Social Security Contributions	119,495.67	71,706.09	8,687.70	199,889.46
230 PSERS Retirement Contributions	485,592.07	293,419.42	17,173.75	796,185.24
260 Workers' Compensation	7,894.15	4,789.87	571.88	13,255.90
292 Health Savings Accounts	9,121.32	5,178.68	1,300.00	15,600.00
Total Personnel Services – Employee Benefits	\$1,119,541.02	\$648,054.10	\$46,131.72	\$1,813,726.84
300 Purchased Professional and Technical Services				
322 Professional Educational Services – lus	168,320.00	122,542.00	55,680.00	346,542.00
329 Professional Educational Services – Other		1,435.85		1,435.85
330 Other Professional Services		73,673.48		73,673.48
Total Purchased Professional and Technical Services	\$168,320.00	\$197,651.33	\$55,680.00	\$421,651.33
500 Other Purchased Services				
510 Student Transportation Services	29,605.36	31,691.49		61,296.85
561 Tuition To Other School Districts Within the State	14,153.81	106,976.06		121,129.87
562 Tuition To Pennsylvania Charter Schools	69,979.36	175,744.16		245,723.52
563 Tuition To Nonpublic Schools	98,746.91	341,599.15		440,346.06
567 Tuition To Approved Private Schools (APS) and PA Chartered Schools for the Deaf and Blind	68,299.20	77,308.80		145,608.00
Total Other Purchased Services	\$280,784.64	\$733,319.66		\$1,014,104.30
600 Supplies				
610 General Supplies	6,848.22	6,976.24		13,824.46
620 Energy		3,093.75		3,093.75
630 Food	7,906.80	6,532.20		14,439.00
640 Books and Periodicals	6,312.80	2,438.78		8,751.58
Total Supplies	\$21,067.82	\$19,040.97		\$40,108.79
800 Other Objects				
810 Dues and Fees	388.44	342.09		730.53
860 Grants To Municipal and Community Service Organizations		9,406.03		9,406.03
Total Other Objects	\$388.44	\$9,748.12		\$10,136.56
Total 1200 Special Programs – Elementary / Secondary	\$3,169,147.38	\$2,565,847.85	\$216,189.08	\$5,951,184.31

General Fund (10)

	<u>Elementary</u>	<u>Secondary</u>	<u>Federal</u>	<u>Total</u>
1210 Life Skills Support				
100 Personnel Services – Salaries				
100 Personnel Services – Salaries	330,272.24	230,549.30		560,821.54
Total Personnel Services – Salaries	\$330,272.24	\$230,549.30		\$560,821.54
200 Personnel Services – Employee Benefits				
210 Group Insurance – Contracted Provider	117,321.02	92,499.63		209,820.65
220 Social Security Contributions	25,185.35	17,492.83		42,678.18
230 PSERS Retirement Contributions	99,155.03	69,205.56		168,360.59
260 Workers' Compensation	1,650.00	1,152.51		2,802.51
292 Health Savings Accounts	440.44	859.56		1,300.00
Total Personnel Services – Employee Benefits	\$243,751.84	\$181,210.09		\$424,961.93
300 Purchased Professional and Technical Services				
322 Professional Educational Services – lus			33,113.10	33,113.10
329 Professional Educational Services – Other		1,435.85		1,435.85
330 Other Professional Services		34,208.48		34,208.48
Total Purchased Professional and Technical Services		\$35,644.33	\$33,113.10	\$68,757.43
500 Other Purchased Services				
510 Student Transportation Services	8,593.93	7,099.89		15,693.82
563 Tuition To Nonpublic Schools		9,606.00		9,606.00
Total Other Purchased Services	\$8,593.93	\$16,705.89		\$25,299.82
600 Supplies				
610 General Supplies	4,479.76	5,592.76		10,072.52
620 Energy		3,093.75		3,093.75
640 Books and Periodicals	941.97	517.10		1,459.07
Total Supplies	\$5,421.73	\$9,203.61		\$14,625.34
Total 1210 Life Skills Support	\$588,039.74	\$473,313.22	\$33,113.10	\$1,094,466.06

General Fund (10)

	<u>Elementary</u>	<u>Secondary</u>	<u>Federal</u>	<u>Total</u>
1220 Sensory Support				
100 Personnel Services – Salaries				
100 Personnel Services – Salaries	215,967.00	51,166.47		267,133.47
Total Personnel Services – Salaries	\$215,967.00	\$51,166.47		\$267,133.47
200 Personnel Services – Employee Benefits				
210 Group Insurance – Contracted Provider	57,427.14	23,706.76		81,133.90
220 Social Security Contributions	16,408.37	3,624.83		20,033.20
230 PSERS Retirement Contributions	64,854.80	15,365.26		80,220.06
260 Workers' Compensation	1,080.01	255.87		1,335.88
292 Health Savings Accounts	1,300.00			1,300.00
Total Personnel Services – Employee Benefits	\$141,070.32	\$42,952.72		\$184,023.04
300 Purchased Professional and Technical Services				
322 Professional Educational Services – lus	47,122.00	77,966.00	2,399.50	127,487.50
330 Other Professional Services		22,995.00		22,995.00
Total Purchased Professional and Technical Services	\$47,122.00	\$100,961.00	\$2,399.50	\$150,482.50
500 Other Purchased Services				
567 Tuition To Approved Private Schools (APS) and PA Chartered Schools for the Deaf and Blind	6,300.00			6,300.00
Total Other Purchased Services	\$6,300.00			\$6,300.00
600 Supplies				
610 General Supplies	548.59	579.01		1,127.60
640 Books and Periodicals	2,622.75	779.18		3,401.93
Total Supplies	\$3,171.34	\$1,358.19		\$4,529.53
800 Other Objects				
810 Dues and Fees	369.63	305.37		675.00
Total Other Objects	\$369.63	\$305.37		\$675.00
Total 1220 Sensory Support	\$414,000.29	\$196,743.75	\$2,399.50	\$613,143.54

General Fund (10)

	<u>Elementary</u>	<u>Secondary</u>	<u>Federal</u>	<u>Total</u>
1230 Emotional Support				
100 Personnel Services – Salaries				
100 Personnel Services – Salaries	104,627.08	122,148.21	57,842.50	284,617.79
Total Personnel Services – Salaries	\$104,627.08	\$122,148.21	\$57,842.50	\$284,617.79
200 Personnel Services – Employee Benefits				
210 Group Insurance – Contracted Provider	37,504.66	41,752.23	4,621.40	83,878.29
220 Social Security Contributions	7,855.70	9,212.21	4,422.56	21,490.47
230 PSERS Retirement Contributions	34,362.04	42,423.68	8,685.05	85,470.77
260 Workers' Compensation	523.19	610.66	289.17	1,423.02
292 Health Savings Accounts	1,300.00	1,300.00		2,600.00
Total Personnel Services – Employee Benefits	\$81,545.59	\$95,298.78	\$18,018.18	\$194,862.55
300 Purchased Professional and Technical Services				
322 Professional Educational Services – lus	120,518.00	44,576.00	12,477.40	177,571.40
Total Purchased Professional and Technical Services	\$120,518.00	\$44,576.00	\$12,477.40	\$177,571.40
500 Other Purchased Services				
510 Student Transportation Services	3,299.71	6,439.69		9,739.40
561 Tuition To Other School Districts Within the State	14,153.81	106,372.31		120,526.12
563 Tuition To Nonpublic Schools	98,746.91	245,868.15		344,615.06
567 Tuition To Approved Private Schools (APS) and PA Chartered Schools for the Deaf and Blind	61,999.20	450.00		62,449.20
Total Other Purchased Services	\$178,199.63	\$359,130.15		\$537,329.78
600 Supplies				
610 General Supplies	81.43	158.92		240.35
630 Food	7,906.80	6,532.20		14,439.00
640 Books and Periodicals		179.10		179.10
Total Supplies	\$7,988.23	\$6,870.22		\$14,858.45
800 Other Objects				
860 Grants To Municipal and Community Service Organizations		9,406.03		9,406.03
Total Other Objects		\$9,406.03		\$9,406.03
Total 1230 Emotional Support	\$492,878.53	\$637,429.39	\$88,338.08	\$1,218,646.00

General Fund (10)

1240 Academic Support

	<u>Elementary</u>	<u>Secondary</u>	<u>Federal</u>	<u>Total</u>
100 Personnel Services – Salaries				
100 Personnel Services – Salaries	928,179.14	554,169.69	56,534.86	1,538,883.69
Total Personnel Services – Salaries	\$928,179.14	\$554,169.69	\$56,534.86	\$1,538,883.69
200 Personnel Services – Employee Benefits				
210 Group Insurance – Contracted Provider	285,175.79	115,001.42	13,776.99	413,954.20
220 Social Security Contributions	70,046.25	41,376.22	4,265.14	115,687.61
230 PSERS Retirement Contributions	287,220.20	166,424.92	8,488.70	462,133.82
260 Workers' Compensation	4,640.95	2,770.83	282.71	7,694.49
292 Health Savings Accounts	6,080.88	3,019.12	1,300.00	10,400.00
Total Personnel Services – Employee Benefits	\$653,164.07	\$328,592.51	\$28,113.54	\$1,009,870.12
300 Purchased Professional and Technical Services				
330 Other Professional Services		16,470.00		16,470.00
Total Purchased Professional and Technical Services		\$16,470.00		\$16,470.00
500 Other Purchased Services				
510 Student Transportation Services	17,711.72	18,151.91		35,863.63
561 Tuition To Other School Districts Within the State		603.75		603.75
562 Tuition To Pennsylvania Charter Schools	69,979.36	175,744.16		245,723.52
Total Other Purchased Services	\$87,691.08	\$194,499.82		\$282,190.90
600 Supplies				
610 General Supplies	1,738.44	645.55		2,383.99
640 Books and Periodicals	2,748.08	963.40		3,711.48
Total Supplies	\$4,486.52	\$1,608.95		\$6,095.47
800 Other Objects				
810 Dues and Fees	18.81	36.72		55.53
Total Other Objects	\$18.81	\$36.72		\$55.53
Total 1240 Academic Support	\$1,673,539.62	\$1,095,377.69	\$84,648.40	\$2,853,565.71

General Fund (10)

	<u>Elementary</u>	<u>Secondary</u>	<u>Federal</u>	<u>Total</u>
1241 Learning Support – Public				
100 Personnel Services – Salaries				
100 Personnel Services – Salaries	767,463.14	554,169.69	56,534.86	1,378,167.69
Total Personnel Services – Salaries	\$767,463.14	\$554,169.69	\$56,534.86	\$1,378,167.69
200 Personnel Services – Employee Benefits				
210 Group Insurance – Contracted Provider	248,696.98	115,001.42	13,776.99	377,475.39
220 Social Security Contributions	58,268.13	41,376.22	4,265.14	103,909.49
230 PSERS Retirement Contributions	238,957.21	166,424.92	8,488.70	413,870.83
260 Workers' Compensation	3,837.30	2,770.83	282.71	6,890.84
292 Health Savings Accounts	3,480.88	3,019.12	1,300.00	7,800.00
Total Personnel Services – Employee Benefits	\$553,240.50	\$328,592.51	\$28,113.54	\$909,946.55
300 Purchased Professional and Technical Services				
330 Other Professional Services		16,470.00		16,470.00
Total Purchased Professional and Technical Services		\$16,470.00		\$16,470.00
500 Other Purchased Services				
510 Student Transportation Services		3,914.82		3,914.82
561 Tuition To Other School Districts Within the State		603.75		603.75
562 Tuition To Pennsylvania Charter Schools	69,979.36	175,744.16		245,723.52
Total Other Purchased Services	\$69,979.36	\$180,262.73		\$250,242.09
600 Supplies				
610 General Supplies	1,364.87	622.35		1,987.22
640 Books and Periodicals	2,327.48	946.21		3,273.69
Total Supplies	\$3,692.35	\$1,568.56		\$5,260.91
Total 1241 Learning Support – Public	\$1,394,375.35	\$1,081,063.49	\$84,648.40	\$2,560,087.24

General Fund (10)

	<u>Elementary</u>	<u>Secondary</u>	<u>Federal</u>	<u>Total</u>
1243 Gifted Support				
100 Personnel Services – Salaries				
100 Personnel Services – Salaries	160,716.00			160,716.00
Total Personnel Services – Salaries	\$160,716.00			\$160,716.00
200 Personnel Services – Employee Benefits				
210 Group Insurance – Contracted Provider	36,478.81			36,478.81
220 Social Security Contributions	11,778.12			11,778.12
230 PSERS Retirement Contributions	48,262.99			48,262.99
260 Workers' Compensation	803.65			803.65
292 Health Savings Accounts	2,600.00			2,600.00
Total Personnel Services – Employee Benefits	\$99,923.57			\$99,923.57
500 Other Purchased Services				
510 Student Transportation Services	17,711.72	14,237.09		31,948.81
Total Other Purchased Services	\$17,711.72	\$14,237.09		\$31,948.81
600 Supplies				
610 General Supplies	373.57	23.20		396.77
640 Books and Periodicals	420.60	17.19		437.79
Total Supplies	\$794.17	\$40.39		\$834.56
800 Other Objects				
810 Dues and Fees	18.81	36.72		55.53
Total Other Objects	\$18.81	\$36.72		\$55.53
Total 1243 Gifted Support	\$279,164.27	\$14,314.20		\$293,478.47

General Fund (10)

1270 Multi-Handicapped Support

200 Personnel Services – Employee Benefits

210 Group Insurance – Contracted Provider

Total Personnel Services – Employee Benefits

500 Other Purchased Services

563 Tuition To Nonpublic Schools

Total Other Purchased Services

Total 1270 Multi-Handicapped Support

	<u>Elementary</u>	<u>Secondary</u>	<u>Federal</u>	<u>Total</u>
	9.20			9.20
	\$9.20			\$9.20
		86,125.00		86,125.00
		\$86,125.00		\$86,125.00
	\$9.20	\$86,125.00		\$86,134.20

General Fund (10)

1280 Early Intervention Support

300 Purchased Professional and Technical Services

322 Professional Educational Services – lus

Total Purchased Professional and Technical Services

Total 1280 Early Intervention Support

	<u>Elementary</u>	<u>Secondary</u>	<u>Federal</u>	<u>Total</u>
	680.00		7,690.00	8,370.00
	\$680.00		\$7,690.00	\$8,370.00
	\$680.00		\$7,690.00	\$8,370.00

General Fund (10)

1290 Special Programs - Other Support

Elementary

Secondary

Federal

Total

500 Other Purchased Services

567 Tuition To Approved Private Schools (APS) and PA Chartered Schools for the Deaf and Blind

76,858.80

76,858.80

Total Other Purchased Services

\$76,858.80

\$76,858.80

Total 1290 Special Programs - Other Support

\$76,858.80

\$76,858.80

General Fund (10)

1300 Vocational Education

Elementary

Secondary

Federal

Total

500 Other Purchased Services

564 Tuition To Career and Technology Centers

696,611.65

696,611.65

Total Other Purchased Services

\$696,611.65

\$696,611.65

Total 1300 Vocational Education

\$696,611.65

\$696,611.65

General Fund (10)

	<u>Elementary</u>	<u>Secondary</u>	<u>Federal</u>	<u>Total</u>
1400 Other Instructional Programs – Elementary / Secondary				
100 Personnel Services – Salaries				
100 Personnel Services – Salaries	34,849.39	228,893.48	11,452.18	275,195.05
Total Personnel Services – Salaries	\$34,849.39	\$228,893.48	\$11,452.18	\$275,195.05
200 Personnel Services – Employee Benefits				
210 Group Insurance – Contracted Provider		20,517.18		20,517.18
220 Social Security Contributions	2,633.86	17,057.81	857.39	20,549.06
230 PSERS Retirement Contributions	10,465.16	68,708.78	1,719.60	80,893.54
260 Workers' Compensation	174.17	1,144.09	57.30	1,375.56
292 Health Savings Accounts		1,300.00		1,300.00
Total Personnel Services – Employee Benefits	\$13,273.19	\$108,727.86	\$2,634.29	\$124,635.34
300 Purchased Professional and Technical Services				
323 Professional Educational Services – Other Educational Agencies		262.56		262.56
Total Purchased Professional and Technical Services		\$262.56		\$262.56
500 Other Purchased Services				
510 Student Transportation Services	4,682.03	3,868.06		8,550.09
561 Tuition To Other School Districts Within the State	88.08	25,744.38		25,832.46
563 Tuition To Nonpublic Schools		100,651.44		100,651.44
Total Other Purchased Services	\$4,770.11	\$130,263.88		\$135,033.99
600 Supplies				
630 Food	941.46	777.79		1,719.25
Total Supplies	\$941.46	\$777.79		\$1,719.25
Total 1400 Other Instructional Programs – Elementary / Secondary	\$53,834.15	\$468,925.57	\$14,086.47	\$536,846.19

General Fund (10)

1410 Drivers' Education

Elementary

Secondary

Federal

Total

100 Personnel Services – Salaries

100 Personnel Services – Salaries

63,095.46

63,095.46

Total Personnel Services – Salaries

\$63,095.46

\$63,095.46

200 Personnel Services – Employee Benefits

210 Group Insurance – Contracted Provider

3,071.50

3,071.50

220 Social Security Contributions

4,547.74

4,547.74

230 PSERS Retirement Contributions

18,919.79

18,919.79

260 Workers' Compensation

315.24

315.24

Total Personnel Services – Employee Benefits

\$26,854.27

\$26,854.27

Total 1410 Drivers' Education

\$89,949.73

\$89,949.73

General Fund (10)

1420 Summer School

	<u>Elementary</u>	<u>Secondary</u>	<u>Federal</u>	<u>Total</u>
100 Personnel Services – Salaries				
100 Personnel Services – Salaries	13,063.75	22,827.10		35,890.85
Total Personnel Services – Salaries	\$13,063.75	\$22,827.10		\$35,890.85
200 Personnel Services – Employee Benefits				
220 Social Security Contributions	994.87	1,741.42		2,736.29
230 PSERS Retirement Contributions	3,923.04	6,854.93		10,777.97
260 Workers’ Compensation	65.33	114.13		179.46
Total Personnel Services – Employee Benefits	\$4,983.24	\$8,710.48		\$13,693.72
500 Other Purchased Services				
510 Student Transportation Services	251.11	207.45		458.56
Total Other Purchased Services	\$251.11	\$207.45		\$458.56
Total 1420 Summer School	\$18,298.10	\$31,745.03		\$50,043.13

General Fund (10)

	<u>Elementary</u>	<u>Secondary</u>	<u>Federal</u>	<u>Total</u>
1430 Homebound Instruction				
100 Personnel Services – Salaries				
100 Personnel Services – Salaries	4,165.74	31,466.25		35,631.99
Total Personnel Services – Salaries	\$4,165.74	\$31,466.25		\$35,631.99
200 Personnel Services – Employee Benefits				
220 Social Security Contributions	302.39	2,364.53		2,666.92
230 PSERS Retirement Contributions	1,250.98	9,449.28		10,700.26
260 Workers’ Compensation	20.83	157.32		178.15
Total Personnel Services – Employee Benefits	\$1,574.20	\$11,971.13		\$13,545.33
300 Purchased Professional and Technical Services				
323 Professional Educational Services – Other Educational Agencies		262.56		262.56
Total Purchased Professional and Technical Services		\$262.56		\$262.56
Total 1430 Homebound Instruction	\$5,739.94	\$43,699.94		\$49,439.88

General Fund (10)

	<u>Elementary</u>	<u>Secondary</u>	<u>Federal</u>	<u>Total</u>
1440 Alternative Regular Education Programs				
100 Personnel Services – Salaries				
100 Personnel Services – Salaries		88,465.00		88,465.00
Total Personnel Services – Salaries		\$88,465.00		\$88,465.00
200 Personnel Services – Employee Benefits				
210 Group Insurance – Contracted Provider		17,445.68		17,445.68
220 Social Security Contributions		6,654.23		6,654.23
230 PSERS Retirement Contributions		26,566.02		26,566.02
260 Workers' Compensation		442.27		442.27
292 Health Savings Accounts		1,300.00		1,300.00
Total Personnel Services – Employee Benefits		\$52,408.20		\$52,408.20
500 Other Purchased Services				
510 Student Transportation Services	4,430.92	3,660.61		8,091.53
561 Tuition To Other School Districts Within the State	88.08	25,744.38		25,832.46
563 Tuition To Nonpublic Schools		100,651.44		100,651.44
Total Other Purchased Services	\$4,519.00	\$130,056.43		\$134,575.43
Total 1440 Alternative Regular Education Programs	\$4,519.00	\$270,929.63		\$275,448.63

General Fund (10)

	<u>Elementary</u>	<u>Secondary</u>	<u>Federal</u>	<u>Total</u>
1442 Alternative Education Programs				
100 Personnel Services – Salaries				
100 Personnel Services – Salaries		88,465.00		88,465.00
Total Personnel Services – Salaries		\$88,465.00		\$88,465.00
200 Personnel Services – Employee Benefits				
210 Group Insurance – Contracted Provider		17,445.68		17,445.68
220 Social Security Contributions		6,654.23		6,654.23
230 PSERS Retirement Contributions		26,566.02		26,566.02
260 Workers' Compensation		442.27		442.27
292 Health Savings Accounts		1,300.00		1,300.00
Total Personnel Services – Employee Benefits		\$52,408.20		\$52,408.20
500 Other Purchased Services				
510 Student Transportation Services	4,430.92	3,660.61		8,091.53
561 Tuition To Other School Districts Within the State	88.08	25,744.38		25,832.46
563 Tuition To Nonpublic Schools		100,651.44		100,651.44
Total Other Purchased Services	\$4,519.00	\$130,056.43		\$134,575.43
Total 1442 Alternative Education Programs	\$4,519.00	\$270,929.63		\$275,448.63

General Fund (10)

	<u>Elementary</u>	<u>Secondary</u>	<u>Federal</u>	<u>Total</u>
1450 Instructional Programs Outside the Established School Day				
100 Personnel Services – Salaries				
100 Personnel Services – Salaries	17,619.90	23,039.67	11,452.18	52,111.75
Total Personnel Services – Salaries	\$17,619.90	\$23,039.67	\$11,452.18	\$52,111.75
200 Personnel Services – Employee Benefits				
220 Social Security Contributions	1,336.60	1,749.89	857.39	3,943.88
230 PSERS Retirement Contributions	5,291.14	6,918.76	1,719.60	13,929.50
260 Workers’ Compensation	88.01	115.13	57.30	260.44
Total Personnel Services – Employee Benefits	\$6,715.75	\$8,783.78	\$2,634.29	\$18,133.82
600 Supplies				
630 Food	941.46	777.79		1,719.25
Total Supplies	\$941.46	\$777.79		\$1,719.25
Total 1450 Instructional Programs Outside the Established School Day	\$25,277.11	\$32,601.24	\$14,086.47	\$71,964.82

General Fund (10)

1500 Nonpublic School Programs

300 Purchased Professional and Technical Services

329 Professional Educational Services – Other

Total Purchased Professional and Technical Services

Total 1500 Nonpublic School Programs

Elementary

Secondary

Federal

Total

9,057.34

9,057.34

\$9,057.34

\$9,057.34

\$9,057.34

\$9,057.34

General Fund (10)

1801 Pre-K Instruction

Elementary Secondary Federal Total

100	<u>Personnel Services – Salaries</u>				
	100 Personnel Services – Salaries				202,936.78
Total Personnel Services – Salaries					\$202,936.78
200	<u>Personnel Services – Employee Benefits</u>				
	210 Group Insurance – Contracted Provider				32,605.32
	220 Social Security Contributions				15,173.23
	230 PSERS Retirement Contributions				58,483.88
	260 Workers' Compensation				1,015.83
	292 Health Savings Accounts				1,337.13
Total Personnel Services – Employee Benefits					\$108,615.39
300	<u>Purchased Professional and Technical Services</u>				
	329 Professional Educational Services – Other				5,026.54
Total Purchased Professional and Technical Services					\$5,026.54
500	<u>Other Purchased Services</u>				
	510 Student Transportation Services				297.92
Total Other Purchased Services					\$297.92
600	<u>Supplies</u>				
	610 General Supplies				7,902.73
	640 Books and Periodicals				873.60
Total Supplies					\$8,776.33
Total 1801 Pre-K Instruction					\$325,652.96

General Fund (10)

1803 Pre-K Operations and Maintenance

Elementary

Secondary

Federal

Total

400 Purchased Property Services

420 Utility Services

1,183.38

Total Purchased Property Services

\$1,183.38

600 Supplies

620 Energy

4,183.60

Total Supplies

\$4,183.60

Total 1803 Pre-K Operations and Maintenance

\$5,366.98

General Fund (10)

1804 Pre-K Student Transportation

Elementary

Secondary

Federal

Total

500 Other Purchased Services

510 Student Transportation Services

14,474.72

Total Other Purchased Services

\$14,474.72

Total 1804 Pre-K Student Transportation

\$14,474.72

LEA : 128323703 Indiana Area SD

Printed 11/6/2017 9:02:18 AM

General Fund (10)

1805 Pre-K Food Services

Elementary

Secondary

Federal

Total

600 Supplies

630 Food

11,046.15

Total Supplies

\$11,046.15

Total 1805 Pre-K Food Services

\$11,046.15

LEA : 128323703 Indiana Area SD

Printed 11/6/2017 9:02:21 AM

Page - 1 of 48

General Fund (10)**2000 Support Services****Total****100 Personnel Services – Salaries**

100 Personnel Services – Salaries 5,571,817.15

Total Personnel Services – Salaries**\$5,571,817.15****200 Personnel Services – Employee Benefits**

210 Group Insurance – Contracted Provider 1,450,770.60

220 Social Security Contributions 416,439.00

230 PSERS Retirement Contributions 1,630,513.48

240 Tuition Reimbursement 120,158.50

250 Unemployment Compensation 45.22

260 Workers' Compensation 27,278.13

280 Other Post-Employment Benefits (OPEB) 68,086.49

291 Other Retirement Plans 36,459.62

292 Health Savings Accounts 41,237.87

Total Personnel Services – Employee Benefits**\$3,790,988.91****300 Purchased Professional and Technical Services**

322 Professional Educational Services – Ius 198,550.67

329 Professional Educational Services – Other 163,205.54

330 Other Professional Services 378,685.59

340 Technical Services 143,706.79

Total Purchased Professional and Technical Services**\$884,148.59****400 Purchased Property Services**

410 Cleaning Services 26,179.99

420 Utility Services 82,333.91

430 Repairs and Maintenance Services 224,235.25

440 Rentals 44,405.50

490 Other Purchased Property Services 1,355.99

Total Purchased Property Services**\$378,510.64****500 Other Purchased Services**

510 Student Transportation Services 573.20

513 Contracted Carriers 1,523,653.51

516 Student Transportation Services From the IU 101,301.80

520 Insurance – General 18,519.00

523 General Property and Liability Insurance 121,704.50

530 Communications 143,598.51

549 Other Advertising/Public Relations 10,568.21

550 Printing and Binding 6,049.98

580 Travel 110,154.68

595 IU Payments By Withholding 155,306.76

Total Other Purchased Services**\$2,191,430.15****600 Supplies**

610 General Supplies 317,938.54

620 Energy 627,355.29

630 Food 303.54

640 Books and Periodicals 31,330.45

General Fund (10)

2000 Support Services

	<u>Total</u>
Total Supplies	\$976,927.82
700 Property	
752 Capital Equipment – Original and Additional	2,224.96
762 Capitalized Equipment - Replacement	32,806.70
Total Property	\$35,031.66
800 Other Objects	
810 Dues and Fees	33,056.69
820 Claims and Judgments Against the LEA	12,850.00
Total Other Objects	\$45,906.69
Total 2000 Support Services	\$13,874,761.61

General Fund (10)

	<u>Elementary</u>	<u>Secondary</u>	<u>Federal</u>	<u>Total</u>
2100 Support Services – Students				
100 Personnel Services – Salaries				
100 Personnel Services – Salaries	319,126.04	446,652.52		809,736.48
Total Personnel Services – Salaries	\$319,126.04	\$446,652.52		\$809,736.48
200 Personnel Services – Employee Benefits				
210 Group Insurance – Contracted Provider	48,292.90	118,837.39		195,158.21
220 Social Security Contributions	24,141.12	34,132.61		61,622.19
230 PSERS Retirement Contributions	95,833.49	134,129.71		243,163.74
260 Workers' Compensation	1,595.84	2,233.30		4,048.95
292 Health Savings Accounts	2,170.22	429.78		2,600.00
Total Personnel Services – Employee Benefits	\$172,033.57	\$289,762.79		\$506,593.09
300 Purchased Professional and Technical Services				
322 Professional Educational Services – lus	27,500.00	27,500.00	143,195.67	198,195.67
329 Professional Educational Services – Other	42,955.52	35,487.73		78,443.25
330 Other Professional Services	6,800.92	5,441.74		12,242.66
Total Purchased Professional and Technical Services	\$77,256.44	\$68,429.47	\$143,195.67	\$288,881.58
400 Purchased Property Services				
440 Rentals	879.75	4,313.57		5,193.32
Total Purchased Property Services	\$879.75	\$4,313.57		\$5,193.32
500 Other Purchased Services				
510 Student Transportation Services		573.20		573.20
530 Communications	917.67	1,864.86		2,782.53
Total Other Purchased Services	\$917.67	\$2,438.06		\$3,355.73
600 Supplies				
610 General Supplies	348.93	(139.98)		208.95
640 Books and Periodicals	718.63			718.63
Total Supplies	\$1,067.56	(\$139.98)		\$927.58
Total 2100 Support Services – Students	\$571,281.03	\$811,456.43	\$143,195.67	\$1,614,687.78

General Fund (10)

	<u>Elementary</u>	<u>Secondary</u>	<u>Federal</u>	<u>Total</u>
2120 Guidance Services				
100 Personnel Services – Salaries				
100 Personnel Services – Salaries	315,575.05	443,718.86		759,293.91
Total Personnel Services – Salaries	\$315,575.05	\$443,718.86		\$759,293.91
200 Personnel Services – Employee Benefits				
210 Group Insurance – Contracted Provider	45,572.10	116,589.59		162,161.69
220 Social Security Contributions	23,870.91	33,909.38		57,780.29
230 PSERS Retirement Contributions	94,767.12	133,248.73		228,015.85
260 Workers' Compensation	1,578.08	2,218.63		3,796.71
292 Health Savings Accounts	2,170.22	429.78		2,600.00
Total Personnel Services – Employee Benefits	\$167,958.43	\$286,396.11		\$454,354.54
300 Purchased Professional and Technical Services				
329 Professional Educational Services – Other	42,955.52	35,487.73		78,443.25
330 Other Professional Services		(176.84)		(176.84)
Total Purchased Professional and Technical Services	\$42,955.52	\$35,310.89		\$78,266.41
400 Purchased Property Services				
440 Rentals	879.75	4,313.57		5,193.32
Total Purchased Property Services	\$879.75	\$4,313.57		\$5,193.32
500 Other Purchased Services				
510 Student Transportation Services		573.20		573.20
530 Communications	917.67	1,864.86		2,782.53
Total Other Purchased Services	\$917.67	\$2,438.06		\$3,355.73
600 Supplies				
610 General Supplies	348.93	(139.98)		208.95
640 Books and Periodicals	718.63			718.63
Total Supplies	\$1,067.56	(\$139.98)		\$927.58
Total 2120 Guidance Services	\$529,353.98	\$772,037.51		\$1,301,391.49

General Fund (10)

2130 Attendance Services

Elementary

Secondary

Federal

Total

100 Personnel Services – Salaries

100 Personnel Services – Salaries

43,957.92

Total Personnel Services – Salaries

\$43,957.92

200 Personnel Services – Employee Benefits

210 Group Insurance – Contracted Provider

28,027.92

220 Social Security Contributions

3,348.46

230 PSERS Retirement Contributions

13,200.54

260 Workers' Compensation

219.81

Total Personnel Services – Employee Benefits

\$44,796.73

Total 2130 Attendance Services

\$88,754.65

General Fund (10)

	<u>Elementary</u>	<u>Secondary</u>	<u>Federal</u>	<u>Total</u>
2140 Psychological Services				
100 Personnel Services – Salaries				
100 Personnel Services – Salaries	3,550.99	2,933.66		6,484.65
Total Personnel Services – Salaries	\$3,550.99	\$2,933.66		\$6,484.65
200 Personnel Services – Employee Benefits				
210 Group Insurance – Contracted Provider	2,720.80	2,247.80		4,968.60
220 Social Security Contributions	270.21	223.23		493.44
230 PSERS Retirement Contributions	1,066.37	880.98		1,947.35
260 Workers' Compensation	17.76	14.67		32.43
Total Personnel Services – Employee Benefits	\$4,075.14	\$3,366.68		\$7,441.82
300 Purchased Professional and Technical Services				
322 Professional Educational Services – lus	27,500.00	27,500.00	143,195.67	198,195.67
330 Other Professional Services	6,800.92	5,618.58		12,419.50
Total Purchased Professional and Technical Services	\$34,300.92	\$33,118.58	\$143,195.67	\$210,615.17
Total 2140 Psychological Services	\$41,927.05	\$39,418.92	\$143,195.67	\$224,541.64

General Fund (10)

2200 Support Services – Instructional Staff

	<u>Elementary</u>	<u>Secondary</u>	<u>Federal</u>	<u>Total</u>
100 Personnel Services – Salaries				
100 Personnel Services – Salaries	443,024.32	274,785.87	11,197.00	729,007.19
Total Personnel Services – Salaries	\$443,024.32	\$274,785.87	\$11,197.00	\$729,007.19
200 Personnel Services – Employee Benefits				
210 Group Insurance – Contracted Provider	83,246.41	45,928.93		129,175.34
220 Social Security Contributions	33,582.29	20,960.90	857.00	55,400.19
230 PSERS Retirement Contributions	133,983.88	83,297.68	1,681.00	218,962.56
240 Tuition Reimbursement	57,296.50	57,066.00		114,362.50
260 Workers' Compensation	2,227.52	1,384.18	33.59	3,645.29
280 Other Post-Employment Benefits (OPEB)	11,049.67	9,128.69		20,178.36
291 Other Retirement Plans	2,343.55	1,936.13		4,279.68
292 Health Savings Accounts	4,023.76	1,176.24		5,200.00
Total Personnel Services – Employee Benefits	\$327,753.58	\$220,878.75	\$2,571.59	\$551,203.92
300 Purchased Professional and Technical Services				
329 Professional Educational Services – Other	45,591.14	37,665.15	1,506.00	84,762.29
330 Other Professional Services	1,073.30	886.70	1,339.00	3,299.00
Total Purchased Professional and Technical Services	\$46,664.44	\$38,551.85	\$2,845.00	\$88,061.29
400 Purchased Property Services				
440 Rentals	909.04	2,959.48		3,868.52
Total Purchased Property Services	\$909.04	\$2,959.48		\$3,868.52
500 Other Purchased Services				
580 Travel	43,194.16	39,376.62	4,741.51	87,312.29
Total Other Purchased Services	\$43,194.16	\$39,376.62	\$4,741.51	\$87,312.29
600 Supplies				
610 General Supplies	988.98	769.00		1,757.98
640 Books and Periodicals	15,313.14	13,453.54		28,766.68
Total Supplies	\$16,302.12	\$14,222.54		\$30,524.66
700 Property				
762 Capitalized Equipment - Replacement		5,530.00		5,530.00
Total Property		\$5,530.00		\$5,530.00
800 Other Objects				
810 Dues and Fees	1,182.27	976.73		2,159.00
Total Other Objects	\$1,182.27	\$976.73		\$2,159.00
Total 2200 Support Services – Instructional Staff	\$879,029.93	\$597,281.84	\$21,355.10	\$1,497,666.87

General Fund (10)

2220 Technology Support Services

700 Property

762 Capitalized Equipment - Replacement

Total Property

Total 2220 Technology Support Services

<u>Elementary</u>	<u>Secondary</u>	<u>Federal</u>	<u>Total</u>
	5,530.00		5,530.00
	\$5,530.00		\$5,530.00
	\$5,530.00		\$5,530.00

General Fund (10)

	<u>Elementary</u>	<u>Secondary</u>	<u>Federal</u>	<u>Total</u>
2250 School Library Services				
100 Personnel Services – Salaries				
100 Personnel Services – Salaries	290,185.08	148,517.66		438,702.74
Total Personnel Services – Salaries	\$290,185.08	\$148,517.66		\$438,702.74
200 Personnel Services – Employee Benefits				
210 Group Insurance – Contracted Provider	56,432.15	23,776.33		80,208.48
220 Social Security Contributions	21,958.12	11,357.60		33,315.72
230 PSERS Retirement Contributions	87,142.78	44,599.88		131,742.66
260 Workers' Compensation	1,450.87	742.55		2,193.42
292 Health Savings Accounts	2,600.00			2,600.00
Total Personnel Services – Employee Benefits	\$169,583.92	\$80,476.36		\$250,060.28
400 Purchased Property Services				
440 Rentals	909.04	2,959.48		3,868.52
Total Purchased Property Services	\$909.04	\$2,959.48		\$3,868.52
600 Supplies				
610 General Supplies	621.22	465.17		1,086.39
640 Books and Periodicals	15,313.14	13,453.54		28,766.68
Total Supplies	\$15,934.36	\$13,918.71		\$29,853.07
Total 2250 School Library Services	\$476,612.40	\$245,872.21		\$722,484.61

General Fund (10)

	<u>Elementary</u>	<u>Secondary</u>	<u>Federal</u>	<u>Total</u>
2260 Instruction and Curriculum Development Services				
100 Personnel Services – Salaries				
100 Personnel Services – Salaries	141,126.05	116,591.35	11,197.00	268,914.40
Total Personnel Services – Salaries	\$141,126.05	\$116,591.35	\$11,197.00	\$268,914.40
200 Personnel Services – Employee Benefits				
210 Group Insurance – Contracted Provider	26,814.26	22,152.60		48,966.86
220 Social Security Contributions	10,733.16	8,867.20	857.00	20,457.36
230 PSERS Retirement Contributions	43,323.65	35,791.86	1,681.00	80,796.51
260 Workers' Compensation	718.11	593.27	33.59	1,344.97
280 Other Post-Employment Benefits (OPEB)	11,049.67	9,128.69		20,178.36
291 Other Retirement Plans	2,343.55	1,936.13		4,279.68
292 Health Savings Accounts	1,423.76	1,176.24		2,600.00
Total Personnel Services – Employee Benefits	\$96,406.16	\$79,645.99	\$2,571.59	\$178,623.74
300 Purchased Professional and Technical Services				
330 Other Professional Services	1,073.30	886.70	1,339.00	3,299.00
Total Purchased Professional and Technical Services	\$1,073.30	\$886.70	\$1,339.00	\$3,299.00
500 Other Purchased Services				
580 Travel	1,786.79	1,476.17		3,262.96
Total Other Purchased Services	\$1,786.79	\$1,476.17		\$3,262.96
600 Supplies				
610 General Supplies	367.76	303.83		671.59
Total Supplies	\$367.76	\$303.83		\$671.59
800 Other Objects				
810 Dues and Fees	1,182.27	976.73		2,159.00
Total Other Objects	\$1,182.27	\$976.73		\$2,159.00
Total 2260 Instruction and Curriculum Development Services	\$241,942.33	\$199,880.77	\$15,107.59	\$456,930.69

General Fund (10)

	<u>Elementary</u>	<u>Secondary</u>	<u>Federal</u>	<u>Total</u>
2270 Instructional Staff Professional Development Services				
100 Personnel Services – Salaries				
100 Personnel Services – Salaries	11,713.19	9,676.86		21,390.05
Total Personnel Services – Salaries	\$11,713.19	\$9,676.86		\$21,390.05
200 Personnel Services – Employee Benefits				
220 Social Security Contributions	891.01	736.10		1,627.11
230 PSERS Retirement Contributions	3,517.45	2,905.94		6,423.39
240 Tuition Reimbursement	57,296.50	57,066.00		114,362.50
260 Workers' Compensation	58.54	48.36		106.90
Total Personnel Services – Employee Benefits	\$61,763.50	\$60,756.40		\$122,519.90
300 Purchased Professional and Technical Services				
329 Professional Educational Services – Other	45,591.14	37,665.15		83,256.29
Total Purchased Professional and Technical Services	\$45,591.14	\$37,665.15		\$83,256.29
500 Other Purchased Services				
580 Travel	41,407.37	37,900.45	4,741.51	84,049.33
Total Other Purchased Services	\$41,407.37	\$37,900.45	\$4,741.51	\$84,049.33
Total 2270 Instructional Staff Professional Development Services	\$160,475.20	\$145,998.86	\$4,741.51	\$311,215.57

General Fund (10)

2280 Nonpublic Support Services

300 Purchased Professional and Technical Services

329 Professional Educational Services – Other

Total Purchased Professional and Technical Services

Total 2280 Nonpublic Support Services

Elementary

Secondary

Federal

Total

1,506.00

1,506.00

\$1,506.00

\$1,506.00

\$1,506.00

\$1,506.00

General Fund (10)

	<u>Elementary</u>	<u>Secondary</u>	<u>Federal</u>	<u>Total</u>
2300 Support Services – Administration				
100 Personnel Services – Salaries				
100 Personnel Services – Salaries	590,721.28	424,765.78		1,379,980.56
Total Personnel Services – Salaries	\$590,721.28	\$424,765.78		\$1,379,980.56
200 Personnel Services – Employee Benefits				
210 Group Insurance – Contracted Provider	125,364.10	125,612.73		306,320.11
220 Social Security Contributions	44,011.18	32,183.20		103,019.29
230 PSERS Retirement Contributions	176,779.07	127,556.98		394,722.10
260 Workers' Compensation	2,953.57	2,123.86		6,582.29
291 Other Retirement Plans	9,194.41	6,887.75		21,285.84
292 Health Savings Accounts	5,430.88	4,319.12		13,650.00
Total Personnel Services – Employee Benefits	\$363,733.21	\$298,683.64		\$845,579.63
300 Purchased Professional and Technical Services				
330 Other Professional Services				78,336.08
340 Technical Services				143,706.79
Total Purchased Professional and Technical Services				\$222,042.87
400 Purchased Property Services				
440 Rentals	925.41	13,730.91		26,656.32
Total Purchased Property Services	\$925.41	\$13,730.91		\$26,656.32
500 Other Purchased Services				
520 Insurance – General				18,519.00
530 Communications	2,974.40	5,617.93		19,454.37
549 Other Advertising/Public Relations				4,751.82
550 Printing and Binding		926.95		4,615.00
580 Travel	198.22			3,176.97
Total Other Purchased Services	\$3,172.62	\$6,544.88		\$50,517.16
600 Supplies				
610 General Supplies	1,689.88	6,864.33		10,833.49
630 Food				303.54
640 Books and Periodicals	28.70	56.00		1,647.15
Total Supplies	\$1,718.58	\$6,920.33		\$12,784.18
800 Other Objects				
810 Dues and Fees	1,394.26	3,122.24		22,235.50
820 Claims and Judgments Against the LEA				12,850.00
Total Other Objects	\$1,394.26	\$3,122.24		\$35,085.50
Total 2300 Support Services – Administration	\$961,665.36	\$753,767.78		\$2,572,646.22

General Fund (10)

	<u>Elementary</u>	<u>Secondary</u>	<u>Federal</u>	<u>Total</u>
2310 Board Services				
100 Personnel Services – Salaries				
100 Personnel Services – Salaries				4,000.00
Total Personnel Services – Salaries				\$4,000.00
200 Personnel Services – Employee Benefits				
220 Social Security Contributions				301.90
230 PSERS Retirement Contributions				1,201.20
260 Workers’ Compensation				20.00
Total Personnel Services – Employee Benefits				\$1,523.10
300 Purchased Professional and Technical Services				
330 Other Professional Services				5,976.50
Total Purchased Professional and Technical Services				\$5,976.50
400 Purchased Property Services				
440 Rentals				6,000.00
Total Purchased Property Services				\$6,000.00
500 Other Purchased Services				
520 Insurance – General				18,519.00
530 Communications				6,522.38
549 Other Advertising/Public Relations				1,651.57
580 Travel				2,088.87
Total Other Purchased Services				\$28,781.82
600 Supplies				
610 General Supplies				2,148.00
630 Food				263.54
640 Books and Periodicals				549.45
Total Supplies				\$2,960.99
800 Other Objects				
810 Dues and Fees				14,485.00
820 Claims and Judgments Against the LEA				12,850.00
Total Other Objects				\$27,335.00
Total 2310 Board Services				\$76,577.41

General Fund (10)

	<u>Elementary</u>	<u>Secondary</u>	<u>Federal</u>	<u>Total</u>
2330 Tax Assessment and Collection Services				
100 Personnel Services – Salaries				
100 Personnel Services – Salaries				63,508.50
Total Personnel Services – Salaries				\$63,508.50
200 Personnel Services – Employee Benefits				
220 Social Security Contributions				4,858.58
Total Personnel Services – Employee Benefits				\$4,858.58
300 Purchased Professional and Technical Services				
340 Technical Services				143,706.79
Total Purchased Professional and Technical Services				\$143,706.79
500 Other Purchased Services				
530 Communications				4,339.66
550 Printing and Binding				3,688.05
Total Other Purchased Services				\$8,027.71
600 Supplies				
610 General Supplies				131.28
Total Supplies				\$131.28
Total 2330 Tax Assessment and Collection Services				\$220,232.86

General Fund (10)

2340 Staff Relations and Negotiations Services

Elementary

Secondary

Federal

Total

300 Purchased Professional and Technical Services

330 Other Professional Services

2,511.00

Total Purchased Professional and Technical Services

\$2,511.00

Total 2340 Staff Relations and Negotiations Services

\$2,511.00

General Fund (10)

2350 Legal and Accounting Services

Elementary

Secondary

Federal

Total

300 Purchased Professional and Technical Services

330 Other Professional Services

69,848.58

Total Purchased Professional and Technical Services

\$69,848.58

Total 2350 Legal and Accounting Services

\$69,848.58

General Fund (10)

	<u>Elementary</u>	<u>Secondary</u>	<u>Federal</u>	<u>Total</u>
2360 Office of the Superintendent / Executive Director Services				
100 Personnel Services – Salaries				
100 Personnel Services – Salaries				296,985.00
Total Personnel Services – Salaries				\$296,985.00
200 Personnel Services – Employee Benefits				
210 Group Insurance – Contracted Provider				55,343.28
220 Social Security Contributions				21,664.43
230 PSERS Retirement Contributions				89,184.85
260 Workers' Compensation				1,484.86
291 Other Retirement Plans				5,203.68
292 Health Savings Accounts				3,900.00
Total Personnel Services – Employee Benefits				\$176,781.10
400 Purchased Property Services				
440 Rentals				6,000.00
Total Purchased Property Services				\$6,000.00
500 Other Purchased Services				
530 Communications	576.32	476.12		1,052.44
549 Other Advertising/Public Relations				3,100.25
580 Travel				889.88
Total Other Purchased Services	\$576.32	\$476.12		\$5,042.57
600 Supplies				
630 Food				40.00
640 Books and Periodicals				1,013.00
Total Supplies				\$1,053.00
800 Other Objects				
810 Dues and Fees				3,234.00
Total Other Objects				\$3,234.00
Total 2360 Office of the Superintendent / Executive Director Services	\$576.32	\$476.12		\$489,095.67

General Fund (10)

	<u>Elementary</u>	<u>Secondary</u>	<u>Federal</u>	<u>Total</u>
2380 Office of the Principal Services				
100 Personnel Services – Salaries				
100 Personnel Services – Salaries	590,721.28	424,765.78		1,015,487.06
Total Personnel Services – Salaries	\$590,721.28	\$424,765.78		\$1,015,487.06
200 Personnel Services – Employee Benefits				
210 Group Insurance – Contracted Provider	125,364.10	125,612.73		250,976.83
220 Social Security Contributions	44,011.18	32,183.20		76,194.38
230 PSERS Retirement Contributions	176,779.07	127,556.98		304,336.05
260 Workers' Compensation	2,953.57	2,123.86		5,077.43
291 Other Retirement Plans	9,194.41	6,887.75		16,082.16
292 Health Savings Accounts	5,430.88	4,319.12		9,750.00
Total Personnel Services – Employee Benefits	\$363,733.21	\$298,683.64		\$662,416.85
400 Purchased Property Services				
440 Rentals	925.41	13,730.91		14,656.32
Total Purchased Property Services	\$925.41	\$13,730.91		\$14,656.32
500 Other Purchased Services				
530 Communications	2,398.08	5,141.81		7,539.89
550 Printing and Binding		926.95		926.95
580 Travel	198.22			198.22
Total Other Purchased Services	\$2,596.30	\$6,068.76		\$8,665.06
600 Supplies				
610 General Supplies	1,689.88	6,864.33		8,554.21
640 Books and Periodicals	28.70	56.00		84.70
Total Supplies	\$1,718.58	\$6,920.33		\$8,638.91
800 Other Objects				
810 Dues and Fees	1,394.26	3,122.24		4,516.50
Total Other Objects	\$1,394.26	\$3,122.24		\$4,516.50
Total 2380 Office of the Principal Services	\$961,089.04	\$753,291.66		\$1,714,380.70

General Fund (10)

	<u>Elementary</u>	<u>Secondary</u>	<u>Federal</u>	<u>Total</u>
2400 Support Services – Pupil Health				
100 Personnel Services – Salaries				
100 Personnel Services – Salaries				400,761.86
Total Personnel Services – Salaries				\$400,761.86
200 Personnel Services – Employee Benefits				
210 Group Insurance – Contracted Provider				96,203.88
220 Social Security Contributions				30,671.85
230 PSERS Retirement Contributions				121,305.26
260 Workers' Compensation				2,002.42
292 Health Savings Accounts				2,562.87
Total Personnel Services – Employee Benefits				\$252,746.28
300 Purchased Professional and Technical Services				
322 Professional Educational Services – lus				355.00
330 Other Professional Services				106,725.09
Total Purchased Professional and Technical Services				\$107,080.09
400 Purchased Property Services				
430 Repairs and Maintenance Services				375.00
Total Purchased Property Services				\$375.00
600 Supplies				
610 General Supplies				7,007.53
Total Supplies				\$7,007.53
700 Property				
762 Capitalized Equipment - Replacement				1,517.05
Total Property				\$1,517.05
Total 2400 Support Services – Pupil Health				\$769,487.81

General Fund (10)

2490 Other Health Services

Elementary

Secondary

Federal

Total

300 Purchased Professional and Technical Services

322 Professional Educational Services – Ius

285.00

330 Other Professional Services

98,002.09

Total Purchased Professional and Technical Services

\$98,287.09

Total 2490 Other Health Services

\$98,287.09

General Fund (10)

	<u>Elementary</u>	<u>Secondary</u>	<u>Federal</u>	<u>Total</u>
2500 Support Services – Business				
100 Personnel Services – Salaries				
100 Personnel Services – Salaries				242,662.39
Total Personnel Services – Salaries				\$242,662.39
200 Personnel Services – Employee Benefits				
210 Group Insurance – Contracted Provider				66,112.05
220 Social Security Contributions				17,796.80
230 PSERS Retirement Contributions				71,433.98
260 Workers' Compensation				1,199.03
280 Other Post-Employment Benefits (OPEB)				23,070.12
291 Other Retirement Plans				1,747.20
292 Health Savings Accounts				6,175.00
Total Personnel Services – Employee Benefits				\$187,534.18
300 Purchased Professional and Technical Services				
330 Other Professional Services				16,793.48
Total Purchased Professional and Technical Services				\$16,793.48
400 Purchased Property Services				
440 Rentals				7,515.82
Total Purchased Property Services				\$7,515.82
500 Other Purchased Services				
530 Communications				8,320.94
549 Other Advertising/Public Relations				123.80
550 Printing and Binding				(152.40)
580 Travel				215.96
Total Other Purchased Services				\$8,508.30
600 Supplies				
610 General Supplies				8,672.78
640 Books and Periodicals				197.99
Total Supplies				\$8,870.77
800 Other Objects				
810 Dues and Fees				4,079.60
Total Other Objects				\$4,079.60
Total 2500 Support Services – Business				\$475,964.54

General Fund (10)

	<u>Elementary</u>	<u>Secondary</u>	<u>Federal</u>	<u>Total</u>
2511 Supervision of Fiscal Services - Head of Component				
100 Personnel Services – Salaries				
100 Personnel Services – Salaries				115,710.56
Total Personnel Services – Salaries				\$115,710.56
200 Personnel Services – Employee Benefits				
210 Group Insurance – Contracted Provider				32,976.96
220 Social Security Contributions				8,596.66
230 PSERS Retirement Contributions				34,774.46
260 Workers' Compensation				578.50
280 Other Post-Employment Benefits (OPEB)				20,178.36
291 Other Retirement Plans				1,747.20
292 Health Savings Accounts				2,275.00
Total Personnel Services – Employee Benefits				\$101,127.14
300 Purchased Professional and Technical Services				
330 Other Professional Services				16,793.48
Total Purchased Professional and Technical Services				\$16,793.48
400 Purchased Property Services				
440 Rentals				7,515.82
Total Purchased Property Services				\$7,515.82
500 Other Purchased Services				
530 Communications				8,320.94
549 Other Advertising/Public Relations				123.80
580 Travel				215.96
Total Other Purchased Services				\$8,660.70
600 Supplies				
610 General Supplies				8,672.78
640 Books and Periodicals				197.99
Total Supplies				\$8,870.77
800 Other Objects				
810 Dues and Fees				4,079.60
Total Other Objects				\$4,079.60
Total 2511 Supervision of Fiscal Services - Head of Component				\$262,758.07

General Fund (10)

2513 Receiving and Disbursing Funds Services

Elementary

Secondary

Federal

Total

100 Personnel Services – Salaries

100 Personnel Services – Salaries

40,564.83

Total Personnel Services – Salaries

\$40,564.83

200 Personnel Services – Employee Benefits

210 Group Insurance – Contracted Provider

8,704.77

220 Social Security Contributions

2,827.53

230 PSERS Retirement Contributions

10,717.35

260 Workers' Compensation

188.67

280 Other Post-Employment Benefits (OPEB)

2,891.76

292 Health Savings Accounts

1,300.00

Total Personnel Services – Employee Benefits

\$26,630.08

Total 2513 Receiving and Disbursing Funds Services

\$67,194.91

General Fund (10)

2514 Payroll Services

100 Personnel Services – Salaries

100 Personnel Services – Salaries

Elementary

Secondary

Federal

Total

31,900.00

Total Personnel Services – Salaries

\$31,900.00

200 Personnel Services – Employee Benefits

210 Group Insurance – Contracted Provider

18,066.00

220 Social Security Contributions

2,324.30

230 PSERS Retirement Contributions

9,579.64

260 Workers' Compensation

159.38

292 Health Savings Accounts

1,300.00

Total Personnel Services – Employee Benefits

\$31,429.32

Total 2514 Payroll Services

\$63,329.32

General Fund (10)

2515 Financial Accounting Services

Elementary

Secondary

Federal

Total

100 Personnel Services – Salaries

100 Personnel Services – Salaries

54,487.00

Total Personnel Services – Salaries

\$54,487.00

200 Personnel Services – Employee Benefits

210 Group Insurance – Contracted Provider

6,364.32

220 Social Security Contributions

4,048.31

230 PSERS Retirement Contributions

16,362.53

260 Workers' Compensation

272.48

292 Health Savings Accounts

1,300.00

Total Personnel Services – Employee Benefits

\$28,347.64

Total 2515 Financial Accounting Services

\$82,834.64

General Fund (10)

2540 Printing, Publishing and Duplicating Services

Elementary

Secondary

Federal

Total

500 Other Purchased Services

550 Printing and Binding

(152.40)

Total Other Purchased Services

(\$152.40)

Total 2540 Printing, Publishing and Duplicating Services

(\$152.40)

General Fund (10)

	<u>Elementary</u>	<u>Secondary</u>	<u>Federal</u>	<u>Total</u>
2600 Operation and Maintenance of Plant Services				
100 Personnel Services – Salaries				
100 Personnel Services – Salaries				1,451,878.78
Total Personnel Services – Salaries				\$1,451,878.78
200 Personnel Services – Employee Benefits				
210 Group Insurance – Contracted Provider				549,871.48
220 Social Security Contributions				109,524.21
230 PSERS Retirement Contributions				426,928.17
250 Unemployment Compensation				45.22
260 Workers' Compensation				7,236.01
280 Other Post-Employment Benefits (OPEB)				18,726.51
291 Other Retirement Plans				1,801.56
292 Health Savings Accounts				2,925.00
Total Personnel Services – Employee Benefits				\$1,117,058.16
300 Purchased Professional and Technical Services				
330 Other Professional Services				53,905.25
Total Purchased Professional and Technical Services				\$53,905.25
400 Purchased Property Services				
410 Cleaning Services				26,179.99
420 Utility Services				82,333.91
430 Repairs and Maintenance Services				223,860.25
440 Rentals				1,171.52
490 Other Purchased Property Services				1,355.99
Total Purchased Property Services				\$334,901.66
500 Other Purchased Services				
523 General Property and Liability Insurance				121,704.50
530 Communications				39,043.21
580 Travel				1,513.60
Total Other Purchased Services				\$162,261.31
600 Supplies				
610 General Supplies	150,032.93	133,266.52		283,299.45
620 Energy				627,355.29
Total Supplies	\$150,032.93	\$133,266.52		\$910,654.74
700 Property				
752 Capital Equipment – Original and Additional				2,224.96
762 Capitalized Equipment - Replacement				21,817.23
Total Property				\$24,042.19
800 Other Objects				
810 Dues and Fees				3,497.59
Total Other Objects				\$3,497.59
Total 2600 Operation and Maintenance of Plant Services	\$150,032.93	\$133,266.52		\$4,058,199.68

General Fund (10)

2610 Supervision of Operation and Maintenance of Plant Services

Elementary

Secondary

Federal

Total

100 Personnel Services – Salaries

100 Personnel Services – Salaries

166,219.56

Total Personnel Services – Salaries

\$166,219.56

200 Personnel Services – Employee Benefits

210 Group Insurance – Contracted Provider

39,335.04

220 Social Security Contributions

12,543.97

230 PSERS Retirement Contributions

49,942.62

260 Workers' Compensation

831.22

291 Other Retirement Plans

1,801.56

292 Health Savings Accounts

2,925.00

Total Personnel Services – Employee Benefits

\$107,379.41

Total 2610 Supervision of Operation and Maintenance of Plant Services

\$273,598.97

General Fund (10)

	<u>Elementary</u>	<u>Secondary</u>	<u>Federal</u>	<u>Total</u>
2611 Supervision of Operation and Maintenance of Plant Services – Head of Component				
100 Personnel Services – Salaries				
100 Personnel Services – Salaries				166,219.56
Total Personnel Services – Salaries				\$166,219.56
200 Personnel Services – Employee Benefits				
210 Group Insurance – Contracted Provider				39,335.04
220 Social Security Contributions				12,543.97
230 PSERS Retirement Contributions				49,942.62
260 Workers' Compensation				831.22
291 Other Retirement Plans				1,801.56
292 Health Savings Accounts				2,925.00
Total Personnel Services – Employee Benefits				\$107,379.41
Total 2611 Supervision of Operation and Maintenance of Plant Services – Head of Component				\$273,598.97

General Fund (10)

	<u>Elementary</u>	<u>Secondary</u>	<u>Federal</u>	<u>Total</u>
2620 Operation of Buildings Services				
100 Personnel Services – Salaries				
100 Personnel Services – Salaries				1,273,987.33
Total Personnel Services – Salaries				\$1,273,987.33
200 Personnel Services – Employee Benefits				
210 Group Insurance – Contracted Provider				507,676.14
220 Social Security Contributions				96,264.25
230 PSERS Retirement Contributions				373,989.28
260 Workers' Compensation				6,357.92
280 Other Post-Employment Benefits (OPEB)				18,726.51
Total Personnel Services – Employee Benefits				\$1,003,014.10
300 Purchased Professional and Technical Services				
330 Other Professional Services				25,220.00
Total Purchased Professional and Technical Services				\$25,220.00
400 Purchased Property Services				
410 Cleaning Services				26,179.99
420 Utility Services				82,333.91
430 Repairs and Maintenance Services				223,860.25
440 Rentals				1,171.52
490 Other Purchased Property Services				1,355.99
Total Purchased Property Services				\$334,901.66
500 Other Purchased Services				
523 General Property and Liability Insurance				121,704.50
530 Communications				39,043.21
580 Travel				1,513.60
Total Other Purchased Services				\$162,261.31
600 Supplies				
610 General Supplies	149,578.20	132,890.85		282,469.05
620 Energy				627,355.29
Total Supplies	\$149,578.20	\$132,890.85		\$909,824.34
700 Property				
752 Capital Equipment – Original and Additional				2,224.96
762 Capitalized Equipment - Replacement				21,817.23
Total Property				\$24,042.19
800 Other Objects				
810 Dues and Fees				3,497.59
Total Other Objects				\$3,497.59
Total 2620 Operation of Buildings Services	\$149,578.20	\$132,890.85		\$3,736,748.52

General Fund (10)

	<u>Elementary</u>	<u>Secondary</u>	<u>Federal</u>	<u>Total</u>
2660 Safety and Security Services				
100 Personnel Services – Salaries				
100 Personnel Services – Salaries				11,671.89
Total Personnel Services – Salaries				\$11,671.89
200 Personnel Services – Employee Benefits				
210 Group Insurance – Contracted Provider				2,860.30
220 Social Security Contributions				715.99
230 PSERS Retirement Contributions				2,996.27
250 Unemployment Compensation				45.22
260 Workers' Compensation				46.87
Total Personnel Services – Employee Benefits				\$6,664.65
300 Purchased Professional and Technical Services				
330 Other Professional Services				28,685.25
Total Purchased Professional and Technical Services				\$28,685.25
600 Supplies				
610 General Supplies	454.73	375.67		830.40
Total Supplies	\$454.73	\$375.67		\$830.40
Total 2660 Safety and Security Services	\$454.73	\$375.67		\$47,852.19

General Fund (10)

	<u>Elementary</u>	<u>Secondary</u>	<u>Federal</u>	<u>Total</u>
2700 Student Transportation Services				
100 Personnel Services – Salaries				
100 Personnel Services – Salaries				108,566.64
Total Personnel Services – Salaries				\$108,566.64
200 Personnel Services – Employee Benefits				
210 Group Insurance – Contracted Provider				22,093.44
220 Social Security Contributions				8,164.53
230 PSERS Retirement Contributions				32,606.79
260 Workers' Compensation				542.88
291 Other Retirement Plans				2,632.56
292 Health Savings Accounts				1,625.00
Total Personnel Services – Employee Benefits				\$67,665.20
500 Other Purchased Services				
513 Contracted Carriers				1,523,653.51
516 Student Transportation Services From the IU				101,301.80
Total Other Purchased Services				\$1,624,955.31
600 Supplies				
610 General Supplies				1,832.73
Total Supplies				\$1,832.73
800 Other Objects				
810 Dues and Fees				228.00
Total Other Objects				\$228.00
Total 2700 Student Transportation Services				\$1,803,247.88

General Fund (10)

2710 Supervision of Student Transportation Services

Elementary

Secondary

Federal

Total

100 Personnel Services – Salaries

100 Personnel Services – Salaries

108,566.64

Total Personnel Services – Salaries

\$108,566.64

200 Personnel Services – Employee Benefits

210 Group Insurance – Contracted Provider

22,093.44

220 Social Security Contributions

8,164.53

230 PSERS Retirement Contributions

32,606.79

260 Workers' Compensation

542.88

291 Other Retirement Plans

2,632.56

292 Health Savings Accounts

1,625.00

Total Personnel Services – Employee Benefits

\$67,665.20

500 Other Purchased Services

513 Contracted Carriers

1,253,673.44

516 Student Transportation Services From the IU

101,301.80

Total Other Purchased Services

\$1,354,975.24

600 Supplies

610 General Supplies

1,832.73

Total Supplies

\$1,832.73

800 Other Objects

810 Dues and Fees

228.00

Total Other Objects

\$228.00

Total 2710 Supervision of Student Transportation Services

\$1,533,267.81

General Fund (10)

2711 Supervision of Student Transportation Services – Head of Component

Elementary

Secondary

Federal

Total

100 Personnel Services – Salaries

100 Personnel Services – Salaries

108,566.64

Total Personnel Services – Salaries

\$108,566.64

200 Personnel Services – Employee Benefits

210 Group Insurance – Contracted Provider

22,093.44

220 Social Security Contributions

8,164.53

230 PSERS Retirement Contributions

32,606.79

260 Workers' Compensation

542.88

291 Other Retirement Plans

2,632.56

292 Health Savings Accounts

1,625.00

Total Personnel Services – Employee Benefits

\$67,665.20

500 Other Purchased Services

513 Contracted Carriers

1,253,673.44

516 Student Transportation Services From the IU

101,301.80

Total Other Purchased Services

\$1,354,975.24

600 Supplies

610 General Supplies

1,832.73

Total Supplies

\$1,832.73

800 Other Objects

810 Dues and Fees

228.00

Total Other Objects

\$228.00

Total 2711 Supervision of Student Transportation Services – Head of Component

\$1,533,267.81

General Fund (10)

2750 Nonpublic Transportation

Elementary

Secondary

Federal

Total

500 Other Purchased Services

513 Contracted Carriers

269,980.07

Total Other Purchased Services

\$269,980.07

Total 2750 Nonpublic Transportation

\$269,980.07

General Fund (10)

	<u>Elementary</u>	<u>Secondary</u>	<u>Federal</u>	<u>Total</u>
2800 Support Services – Central				
100 Personnel Services – Salaries				
100 Personnel Services – Salaries				449,223.25
Total Personnel Services – Salaries				\$449,223.25
200 Personnel Services – Employee Benefits				
210 Group Insurance – Contracted Provider				85,836.09
220 Social Security Contributions				30,239.94
230 PSERS Retirement Contributions				121,390.88
240 Tuition Reimbursement				5,796.00
260 Workers' Compensation				2,021.26
280 Other Post-Employment Benefits (OPEB)				6,111.50
291 Other Retirement Plans				4,712.78
292 Health Savings Accounts				6,500.00
Total Personnel Services – Employee Benefits				\$262,608.45
300 Purchased Professional and Technical Services				
330 Other Professional Services				107,384.03
Total Purchased Professional and Technical Services				\$107,384.03
500 Other Purchased Services				
530 Communications				73,997.46
549 Other Advertising/Public Relations				5,692.59
550 Printing and Binding				1,587.38
580 Travel				17,935.86
Total Other Purchased Services				\$99,213.29
600 Supplies				
610 General Supplies				4,325.63
Total Supplies				\$4,325.63
700 Property				
762 Capitalized Equipment - Replacement				3,942.42
Total Property				\$3,942.42
800 Other Objects				
810 Dues and Fees				857.00
Total Other Objects				\$857.00
Total 2800 Support Services – Central				\$927,554.07

General Fund (10)

2810 Planning, Research, Development and Evaluation Services	<u>Elementary</u>	<u>Secondary</u>	<u>Federal</u>	<u>Total</u>
100 <u>Personnel Services – Salaries</u>				
100 Personnel Services – Salaries				236,838.04
Total Personnel Services – Salaries				\$236,838.04
200 <u>Personnel Services – Employee Benefits</u>				
210 Group Insurance – Contracted Provider				36,790.92
220 Social Security Contributions				17,942.46
230 PSERS Retirement Contributions				71,122.25
260 Workers' Compensation				1,184.17
291 Other Retirement Plans				2,723.52
292 Health Savings Accounts				2,600.00
Total Personnel Services – Employee Benefits				\$132,363.32
300 <u>Purchased Professional and Technical Services</u>				
330 Other Professional Services				24,185.14
Total Purchased Professional and Technical Services				\$24,185.14
500 <u>Other Purchased Services</u>				
530 Communications				18,990.70
580 Travel				1,262.89
Total Other Purchased Services				\$20,253.59
Total 2810 Planning, Research, Development and Evaluation Services				\$413,640.09

General Fund (10)

2820 Information Services

Elementary

Secondary

Federal

Total

500 Other Purchased Services

530 Communications

1,092.24

580 Travel

49.40

Total Other Purchased Services

\$1,141.64

Total 2820 Information Services

\$1,141.64

General Fund (10)

2823 Public Information Services

Elementary

Secondary

Federal

Total

500 Other Purchased Services

530 Communications

1,092.24

580 Travel

49.40

Total Other Purchased Services

\$1,141.64

Total 2823 Public Information Services

\$1,141.64

General Fund (10)

2830 Staff Services

Elementary

Secondary

Federal

Total

100 Personnel Services – Salaries

100 Personnel Services – Salaries 53,977.00

Total Personnel Services – Salaries \$53,977.00

200 Personnel Services – Employee Benefits

210 Group Insurance – Contracted Provider 19,515.21

220 Social Security Contributions 4,033.41

230 PSERS Retirement Contributions 16,209.17

240 Tuition Reimbursement 5,796.00

260 Workers' Compensation 269.88

292 Health Savings Accounts 1,300.00

Total Personnel Services – Employee Benefits \$47,123.67

500 Other Purchased Services

549 Other Advertising/Public Relations 5,692.59

580 Travel 16,466.86

Total Other Purchased Services \$22,159.45

800 Other Objects

810 Dues and Fees 400.00

Total Other Objects \$400.00

Total 2830 Staff Services \$123,660.12

General Fund (10)

2831 Supervision of Staff Services

Elementary

Secondary

Federal

Total

100 Personnel Services – Salaries

100 Personnel Services – Salaries

53,977.00

Total Personnel Services – Salaries

\$53,977.00

200 Personnel Services – Employee Benefits

210 Group Insurance – Contracted Provider

19,515.21

220 Social Security Contributions

4,033.41

230 PSERS Retirement Contributions

16,209.17

260 Workers' Compensation

269.88

292 Health Savings Accounts

1,300.00

Total Personnel Services – Employee Benefits

\$41,327.67

500 Other Purchased Services

549 Other Advertising/Public Relations

5,692.59

Total Other Purchased Services

\$5,692.59

800 Other Objects

810 Dues and Fees

400.00

Total Other Objects

\$400.00

Total 2831 Supervision of Staff Services

\$101,397.26

General Fund (10)

2834 Staff Development Services – Non-Instructional, Certified Staff Only

Elementary

Secondary

Federal

Total

200 Personnel Services – Employee Benefits

240 Tuition Reimbursement

5,796.00

Total Personnel Services – Employee Benefits

\$5,796.00

500 Other Purchased Services

580 Travel

16,466.86

Total Other Purchased Services

\$16,466.86

Total 2834 Staff Development Services – Non-Instructional, Certified Staff Only

\$22,262.86

General Fund (10)

	<u>Elementary</u>	<u>Secondary</u>	<u>Federal</u>	<u>Total</u>
2840 Data Processing Services				
100 Personnel Services – Salaries				
100 Personnel Services – Salaries				158,408.21
Total Personnel Services – Salaries				\$158,408.21
200 Personnel Services – Employee Benefits				
210 Group Insurance – Contracted Provider				29,529.96
220 Social Security Contributions				8,264.07
230 PSERS Retirement Contributions				34,059.46
260 Workers' Compensation				567.21
280 Other Post-Employment Benefits (OPEB)				6,111.50
291 Other Retirement Plans				1,989.26
292 Health Savings Accounts				2,600.00
Total Personnel Services – Employee Benefits				\$83,121.46
300 Purchased Professional and Technical Services				
330 Other Professional Services				83,198.89
Total Purchased Professional and Technical Services				\$83,198.89
500 Other Purchased Services				
530 Communications				53,914.52
550 Printing and Binding				1,587.38
580 Travel				156.71
Total Other Purchased Services				\$55,658.61
600 Supplies				
610 General Supplies				4,325.63
Total Supplies				\$4,325.63
700 Property				
762 Capitalized Equipment - Replacement				3,942.42
Total Property				\$3,942.42
800 Other Objects				
810 Dues and Fees				457.00
Total Other Objects				\$457.00
Total 2840 Data Processing Services				\$389,112.22

General Fund (10)

2900 Other Support Services

Elementary

Secondary

Federal

Total

500 Other Purchased Services

595 IU Payments By Withholding

155,306.76

Total Other Purchased Services

\$155,306.76

Total 2900 Other Support Services

\$155,306.76

General Fund (10)

2910 Support Services Not Listed Elsewhere In the 2000 Series

Elementary

Secondary

Federal

Total

500 Other Purchased Services

595 IU Payments By Withholding

155,306.76

Total Other Purchased Services

\$155,306.76

Total 2910 Support Services Not Listed Elsewhere In the 2000 Series

\$155,306.76

General Fund (10)

3000 Operation of Non-Instructional Services

Total

100 Personnel Services – Salaries

100 Personnel Services – Salaries 506,911.25

Total Personnel Services – Salaries \$506,911.25

200 Personnel Services – Employee Benefits

210 Group Insurance – Contracted Provider 20,834.64

220 Social Security Contributions 39,220.97

230 PSERS Retirement Contributions 131,890.76

250 Unemployment Compensation 1,731.98

260 Workers' Compensation 2,574.72

Total Personnel Services – Employee Benefits \$196,253.07

300 Purchased Professional and Technical Services

329 Professional Educational Services – Other 972.00

330 Other Professional Services 27,358.35

390 Other Purchased Professional and Technical Services 25,630.00

Total Purchased Professional and Technical Services \$53,960.35

400 Purchased Property Services

410 Cleaning Services 13,074.02

440 Rentals 18,446.25

Total Purchased Property Services \$31,520.27

500 Other Purchased Services

510 Student Transportation Services 99,203.06

520 Insurance – General 13,230.00

580 Travel 13,032.42

599 Other Miscellaneous Purchased Services 26,897.88

Total Other Purchased Services \$152,363.36

600 Supplies

610 General Supplies 83,045.05

640 Books and Periodicals 1,500.00

Total Supplies \$84,545.05

800 Other Objects

810 Dues and Fees 11,427.00

860 Grants To Municipal and Community Service Organizations 43,000.00

Total Other Objects \$54,427.00

Total 3000 Operation of Non-Instructional Services \$1,079,980.35

General Fund (10)

3200 Student Activities

Elementary Secondary Federal Total

100	<u>Personnel Services – Salaries</u>			
	100 Personnel Services – Salaries			485,886.25
Total Personnel Services – Salaries				\$485,886.25
200	<u>Personnel Services – Employee Benefits</u>			
	210 Group Insurance – Contracted Provider			20,834.64
	220 Social Security Contributions			37,612.37
	230 PSERS Retirement Contributions			125,576.97
	250 Unemployment Compensation			1,731.98
	260 Workers' Compensation			2,469.68
Total Personnel Services – Employee Benefits				\$188,225.64
300	<u>Purchased Professional and Technical Services</u>			
	329 Professional Educational Services – Other			972.00
	330 Other Professional Services			27,358.35
	390 Other Purchased Professional and Technical Services			25,630.00
Total Purchased Professional and Technical Services				\$53,960.35
400	<u>Purchased Property Services</u>			
	410 Cleaning Services			13,074.02
	440 Rentals			18,446.25
Total Purchased Property Services				\$31,520.27
500	<u>Other Purchased Services</u>			
	510 Student Transportation Services			99,203.06
	520 Insurance – General			13,230.00
	580 Travel			13,032.42
Total Other Purchased Services				\$125,465.48
600	<u>Supplies</u>			
	610 General Supplies			82,371.71
	640 Books and Periodicals			1,500.00
Total Supplies				\$83,871.71
800	<u>Other Objects</u>			
	810 Dues and Fees			11,427.00
Total Other Objects				\$11,427.00
Total 3200 Student Activities				\$980,356.70

General Fund (10)

	<u>Elementary</u>	<u>Secondary</u>	<u>Federal</u>	<u>Total</u>
3300 Community Services				
100 Personnel Services – Salaries				
100 Personnel Services – Salaries				21,025.00
Total Personnel Services – Salaries				\$21,025.00
200 Personnel Services – Employee Benefits				
220 Social Security Contributions				1,608.60
230 PSERS Retirement Contributions				6,313.79
260 Workers’ Compensation				105.04
Total Personnel Services – Employee Benefits				\$8,027.43
500 Other Purchased Services				
599 Other Miscellaneous Purchased Services				26,897.88
Total Other Purchased Services				\$26,897.88
600 Supplies				
610 General Supplies			673.34	673.34
Total Supplies			\$673.34	\$673.34
800 Other Objects				
860 Grants To Municipal and Community Service Organizations				43,000.00
Total Other Objects				\$43,000.00
Total 3300 Community Services			\$673.34	\$99,623.65

General Fund (10)

5000 Other Expenditures and Financing Uses

Total

800 Other Objects

880 Refunds of Prior Years' Receipts

63.01

Total Other Objects

\$63.01

900 Other Uses of Funds

930 Fund Transfers

3,456,145.12

932 Capital Reserve Fund Transfers Applicable To Fund 32

322,674.82

Total Other Uses of Funds

\$3,778,819.94

Total 5000 Other Expenditures and Financing Uses

\$3,778,882.95

LEA : 128323703 Indiana Area SD

Printed 11/6/2017 9:02:31 AM

General Fund (10)

5100 Debt Service / Other Expenditures and Financing Uses	<u>Elementary</u>	<u>Secondary</u>	<u>Federal</u>	<u>Total</u>
800 <u>Other Objects</u>				
880 Refunds of Prior Years' Receipts				63.01
Total Other Objects				\$63.01
Total 5100 Debt Service / Other Expenditures and Financing Uses				\$63.01

General Fund (10)

	<u>Elementary</u>	<u>Secondary</u>	<u>Federal</u>	<u>Total</u>
5130 Refund of Prior Year Revenues / Receipts				
800 <u>Other Objects</u>				
880 Refunds of Prior Years' Receipts				63.01
Total Other Objects				\$63.01
Total 5130 Refund of Prior Year Revenues / Receipts				\$63.01

General Fund (10)

5200 Interfund Transfers – Out

Elementary

Secondary

Federal

Total

900 Other Uses of Funds

930 Fund Transfers

3,456,145.12

932 Capital Reserve Fund Transfers Applicable To Fund 32

322,674.82

Total Other Uses of Funds

\$3,778,819.94

Total 5200 Interfund Transfers – Out

\$3,778,819.94

General Fund (10)

5230 Capital Projects Fund Transfers

Elementary

Secondary

Federal

Total

900 Other Uses of Funds

932 Capital Reserve Fund Transfers Applicable To Fund 32

322,674.82

Total Other Uses of Funds

\$322,674.82

Total 5230 Capital Projects Fund Transfers

\$322,674.82

General Fund (10)

5240 Debt Service Fund Transfers

Elementary

Secondary

Federal

Total

900 Other Uses of Funds

930 Fund Transfers

3,454,942.00

Total Other Uses of Funds

\$3,454,942.00

Total 5240 Debt Service Fund Transfers

\$3,454,942.00

General Fund (10)

	<u>Elementary</u>	<u>Secondary</u>	<u>Federal</u>	<u>Total</u>
5250 Enterprise Fund Transfers				
900 <u>Other Uses of Funds</u>				
930 Fund Transfers				1,203.12
Total Other Uses of Funds				\$1,203.12
Total 5250 Enterprise Fund Transfers				\$1,203.12

Capital Reserve Fund - § 1431 (32)

2000 Support Services

Total

400 Purchased Property Services

430 Repairs and Maintenance Services

66,225.60

Total Purchased Property Services

\$66,225.60

700 Property

762 Capitalized Equipment - Replacement

101,716.43

Total Property

\$101,716.43

Total 2000 Support Services

\$167,942.03

LEA : 128323703 Indiana Area SD

Printed 11/6/2017 9:02:24 AM

Capital Reserve Fund - § 1431 (32)

2100 Support Services – Students

700 Property

762 Capitalized Equipment - Replacement

	<u>Elementary</u>	<u>Secondary</u>	<u>Federal</u>	<u>Total</u>
762 Capitalized Equipment - Replacement	1,665.86	1,362.97		3,028.83
Total Property	\$1,665.86	\$1,362.97		\$3,028.83
Total 2100 Support Services – Students	\$1,665.86	\$1,362.97		\$3,028.83

Capital Reserve Fund - § 1431 (32)

2190 Other Student Services

700 Property

762 Capitalized Equipment - Replacement

Total Property

Total 2190 Other Student Services

	<u>Elementary</u>	<u>Secondary</u>	<u>Federal</u>	<u>Total</u>
	1,665.86	1,362.97		3,028.83
	\$1,665.86	\$1,362.97		\$3,028.83
	\$1,665.86	\$1,362.97		\$3,028.83

LEA : 128323703 Indiana Area SD

Printed 11/6/2017 9:02:24 AM

Capital Reserve Fund - § 1431 (32)

2200 Support Services – Instructional Staff

700 Property

762 Capitalized Equipment - Replacement

	<u>Elementary</u>	<u>Secondary</u>	<u>Federal</u>	<u>Total</u>
762 Capitalized Equipment - Replacement	42,463.63	34,742.97		77,206.60
Total Property	\$42,463.63	\$34,742.97		\$77,206.60
Total 2200 Support Services – Instructional Staff	\$42,463.63	\$34,742.97		\$77,206.60

LEA : 128323703 Indiana Area SD

Printed 11/6/2017 9:02:24 AM

Capital Reserve Fund - § 1431 (32)

2220 Technology Support Services

	<u>Elementary</u>	<u>Secondary</u>	<u>Federal</u>	<u>Total</u>
700 Property				
762 Capitalized Equipment - Replacement	42,463.63	34,742.97		77,206.60
Total Property	\$42,463.63	\$34,742.97		\$77,206.60
Total 2220 Technology Support Services	\$42,463.63	\$34,742.97		\$77,206.60

Capital Reserve Fund - § 1431 (32)

2600 Operation and Maintenance of Plant Services

Elementary

Secondary

Federal

Total

400 Purchased Property Services

430 Repairs and Maintenance Services

66,225.60

Total Purchased Property Services

\$66,225.60

700 Property

762 Capitalized Equipment - Replacement

21,481.00

Total Property

\$21,481.00

Total 2600 Operation and Maintenance of Plant Services

\$87,706.60

Capital Reserve Fund - § 1431 (32)

2620 Operation of Buildings Services

Elementary

Secondary

Federal

Total

400 Purchased Property Services

430 Repairs and Maintenance Services

66,225.60

Total Purchased Property Services

\$66,225.60

700 Property

762 Capitalized Equipment - Replacement

21,481.00

Total Property

\$21,481.00

Total 2620 Operation of Buildings Services

\$87,706.60

Capital Reserve Fund - § 1431 (32)

4000 Facilities Acquisition, Construction and Improvement Services

Total

400 Purchased Property Services

430 Repairs and Maintenance Services

50,206.13

490 Other Purchased Property Services

29,330.21

Total Purchased Property Services

\$79,536.34

Total 4000 Facilities Acquisition, Construction and Improvement Services

\$79,536.34

Capital Reserve Fund - § 1431 (32)

4200 Existing Site Improvement Services

Elementary

Secondary

Federal

Total

400 Purchased Property Services

430 Repairs and Maintenance Services

49,889.33

Total Purchased Property Services

\$49,889.33

Total 4200 Existing Site Improvement Services

\$49,889.33

LEA : 128323703 Indiana Area SD

Printed 11/6/2017 9:02:29 AM

Capital Reserve Fund - § 1431 (32)

4600 Existing Building Improvement Services

Elementary

Secondary

Federal

Total

400 Purchased Property Services

430 Repairs and Maintenance Services

316.80

490 Other Purchased Property Services

29,330.21

Total Purchased Property Services

\$29,647.01

Total 4600 Existing Building Improvement Services

\$29,647.01

Other Capital Projects Fund (39)

1000 Instruction	<u>Total</u>
700 Property	
752 Capital Equipment – Original and Additional	249,782.49
Total Property	\$249,782.49
Total 1000 Instruction	\$249,782.49

Other Capital Projects Fund (39)

1100 Regular Programs – Elementary / Secondary

Elementary

Secondary

Federal

Total

700 Property

752 Capital Equipment – Original and Additional

249,782.49

249,782.49

Total Property

\$249,782.49

\$249,782.49

Total 1100 Regular Programs – Elementary / Secondary

\$249,782.49

\$249,782.49

Other Capital Projects Fund (39)

1110 Regular Programs

700 Property

752 Capital Equipment – Original and Additional

Total Property

Total 1110 Regular Programs

<u>Elementary</u>	<u>Secondary</u>	<u>Federal</u>	<u>Total</u>
	249,782.49		249,782.49
	\$249,782.49		\$249,782.49
	\$249,782.49		\$249,782.49

Other Capital Projects Fund (39)

2000 Support Services

800 Other Objects

810 Dues and Fees

Total Other Objects

Total 2000 Support Services

Total

21.00

\$21.00

\$21.00

LEA : 128323703 Indiana Area SD

Printed 11/6/2017 9:02:25 AM

Other Capital Projects Fund (39)

2300 Support Services – Administration

Elementary

Secondary

Federal

Total

800 Other Objects

810 Dues and Fees

21.00

Total Other Objects

\$21.00

Total 2300 Support Services – Administration

\$21.00

LEA : 128323703 Indiana Area SD

Printed 11/6/2017 9:02:25 AM

Other Capital Projects Fund (39)

2390 Other Administration Services

Elementary

Secondary

Federal

Total

800 Other Objects

810 Dues and Fees

21.00

Total Other Objects

\$21.00

Total 2390 Other Administration Services

\$21.00

Other Capital Projects Fund (39)

4000 Facilities Acquisition, Construction and Improvement Services

Total

300 Purchased Professional and Technical Services

330 Other Professional Services

26,492.05

Total Purchased Professional and Technical Services

\$26,492.05

400 Purchased Property Services

430 Repairs and Maintenance Services

1,039,247.04

450 Construction Services

1,450,383.62

Total Purchased Property Services

\$2,489,630.66

Total 4000 Facilities Acquisition, Construction and Improvement Services

\$2,516,122.71

LEA : 128323703 Indiana Area SD

Printed 11/6/2017 9:02:30 AM

Other Capital Projects Fund (39)

4200 Existing Site Improvement Services

Elementary

Secondary

Federal

Total

400 Purchased Property Services

430 Repairs and Maintenance Services

451,599.68

Total Purchased Property Services				\$451,599.68
Total 4200 Existing Site Improvement Services				\$451,599.68

Other Capital Projects Fund (39)

4400 Architecture and Engineering Services / Educational Specifications – Improvements

Elementary

Secondary

Federal

Total

300 Purchased Professional and Technical Services

330 Other Professional Services

26,492.05

Total Purchased Professional and Technical Services

\$26,492.05

Total 4400 Architecture and Engineering Services / Educational Specifications – Improvements

\$26,492.05

Other Capital Projects Fund (39)

4500 Building Acquisition and Construction Services – Original and Additional

Elementary

Secondary

Federal

Total

400 Purchased Property Services

450 Construction Services

1,415,731.51

Total Purchased Property Services

\$1,415,731.51

Total 4500 Building Acquisition and Construction Services – Original and Additional

\$1,415,731.51

Other Capital Projects Fund (39)

4600 Existing Building Improvement Services

Elementary

Secondary

Federal

Total

400 Purchased Property Services

430 Repairs and Maintenance Services

587,647.36

450 Construction Services

34,652.11

Total Purchased Property Services

\$622,299.47

Total 4600 Existing Building Improvement Services

\$622,299.47

Debt Service Fund (40)

2000 Support Services

800 Other Objects

810 Dues and Fees

325,923.65

Total Other Objects

\$325,923.65

Total 2000 Support Services

\$325,923.65

LEA : 128323703 Indiana Area SD

Printed 11/6/2017 9:02:26 AM

Debt Service Fund (40)

2300 Support Services – Administration

Elementary

Secondary

Federal

Total

800 Other Objects

810 Dues and Fees

325,923.65

Total Other Objects

\$325,923.65

Total 2300 Support Services – Administration

\$325,923.65

Debt Service Fund (40)

2390 Other Administration Services

Elementary

Secondary

Federal

Total

800 Other Objects

810 Dues and Fees

325,923.65

Total Other Objects

\$325,923.65

Total 2390 Other Administration Services

\$325,923.65

Debt Service Fund (40)

5000 Other Expenditures and Financing Uses

Total

800 Other Objects

830 Interest 657,404.66

Total Other Objects \$657,404.66

900 Other Uses of Funds

910 Redemption of Principal 2,797,537.45

939 Other Fund Transfers 9,673,112.85

Total Other Uses of Funds \$12,470,650.30

Total 5000 Other Expenditures and Financing Uses \$13,128,054.96

Debt Service Fund (40)

5100 Debt Service / Other Expenditures and Financing Uses	<u>Elementary</u>	<u>Secondary</u>	<u>Federal</u>	<u>Total</u>
800 <u>Other Objects</u>				
830 Interest				657,404.66
Total Other Objects				\$657,404.66
900 <u>Other Uses of Funds</u>				
910 Redemption of Principal				2,797,537.45
Total Other Uses of Funds				\$2,797,537.45
Total 5100 Debt Service / Other Expenditures and Financing Uses				\$3,454,942.11

Debt Service Fund (40)

	<u>Elementary</u>	<u>Secondary</u>	<u>Federal</u>	<u>Total</u>
5110 Debt Service				
800 Other Objects				
830 Interest				657,404.66
Total Other Objects				\$657,404.66
900 Other Uses of Funds				
910 Redemption of Principal				2,797,537.45
Total Other Uses of Funds				\$2,797,537.45
Total 5110 Debt Service				\$3,454,942.11

LEA : 128323703 Indiana Area SD

Printed 11/6/2017 9:02:32 AM

Debt Service Fund (40)

5200 Interfund Transfers – Out

Elementary

Secondary

Federal

Total

900 Other Uses of Funds

939 Other Fund Transfers

9,673,112.85

Total Other Uses of Funds

\$9,673,112.85

Total 5200 Interfund Transfers – Out

\$9,673,112.85

Debt Service Fund (40)

5230 Capital Projects Fund Transfers

Elementary

Secondary

Federal

Total

900 Other Uses of Funds

939 Other Fund Transfers

9,673,112.85

Total Other Uses of Funds

\$9,673,112.85

Total 5230 Capital Projects Fund Transfers

\$9,673,112.85

	<u>General Fund(10)</u>	<u>Public Purpose Trust(27)</u>	<u>Other Compt Approved (28)</u>	<u>Athletic / Activity(29)</u>	<u>Capital Reserve (690. 1850)(31)</u>
1000 Instruction					
1100 Regular Programs - Elementary / Secondary	27,161,150.37				
1200 Special Programs - Elementary / Secondary	5,951,184.31				
1300 Vocational Education	696,611.65				
1400 Other Instructional Programs - Elementary / Secondary	536,846.19				
1500 Nonpublic School Programs	9,057.34				
1800 Pre-Kindergarten	356,540.81				
Total Instruction	\$34,711,390.67				
2000 Support Services					
2100 Support Services - Students	1,614,687.78				
2200 Support Services - Instructional Staff	1,497,666.87				
2300 Support Services - Administration	2,572,646.22				
2400 Support Services - Pupil Health	769,487.81				
2500 Support Services - Business	475,964.54				
2600 Operation and Maintenance of Plant Services	4,058,199.68				
2700 Student Transportation Services	1,803,247.88				
2800 Support Services - Central	927,554.07				
2900 Other Support Services	155,306.76				
Total Support Services	\$13,874,761.61				
3000 Operation of Non-Instructional Services					
3200 Student Activities	980,356.70				
3300 Community Services	99,623.65				
Total Operation of Non-Instructional Services	\$1,079,980.35				
4000 Facilities Acquisition, Construction and Improvement Services					
4200 Existing Site Improvement Services					
4400 Architecture and Engineering Services / Educational Specifications - Improvements					
4500 Building Acquisition and Construction Services - Original and Additional					
4600 Existing Building Improvement Services					
Total Facilities Acquisition, Construction and Improvement Services					
5000 Other Expenditures and Financing Uses					
5100 Debt Service / Other Expenditures and Financing Uses	63.01				
5200 Interfund Transfers - Out	3,778,819.94				
Total Other Expenditures and Financing Uses	\$3,778,882.95				
TOTAL ACTUAL EXPENDITURES & OTHER FINANCING USES	\$53,445,015.58				

	<u>Capital Reserve (1431)(32)</u>	<u>Other Capital Projects Fund(39)</u>	<u>Debt Service(40)</u>	<u>Permanent(90)</u>	<u>Total</u>
1000 Instruction					
1100 Regular Programs - Elementary / Secondary		249,782.49			27,410,932.86
1200 Special Programs - Elementary / Secondary					5,951,184.31
1300 Vocational Education					696,611.65
1400 Other Instructional Programs - Elementary / Secondary					536,846.19
1500 Nonpublic School Programs					9,057.34
1800 Pre-Kindergarten					356,540.81
Total Instruction		\$249,782.49			\$34,961,173.16
2000 Support Services					
2100 Support Services - Students	3,028.83				1,617,716.61
2200 Support Services - Instructional Staff	77,206.60				1,574,873.47
2300 Support Services - Administration		21.00	325,923.65		2,898,590.87
2400 Support Services - Pupil Health					769,487.81
2500 Support Services - Business					475,964.54
2600 Operation and Maintenance of Plant Services	87,706.60				4,145,906.28
2700 Student Transportation Services					1,803,247.88
2800 Support Services - Central					927,554.07
2900 Other Support Services					155,306.76
Total Support Services	\$167,942.03	\$21.00	\$325,923.65		\$14,368,648.29
3000 Operation of Non-Instructional Services					
3200 Student Activities					980,356.70
3300 Community Services					99,623.65
Total Operation of Non-Instructional Services					\$1,079,980.35
4000 Facilities Acquisition, Construction and Improvement Services					
4200 Existing Site Improvement Services	49,889.33	451,599.68			501,489.01
4400 Architecture and Engineering Services / Educational Specifications - Improvements		26,492.05			26,492.05
4500 Building Acquisition and Construction Services - Original and Additional		1,415,731.51			1,415,731.51
4600 Existing Building Improvement Services	29,647.01	622,299.47			651,946.48
Total Facilities Acquisition, Construction and Improvement Services	\$79,536.34	\$2,516,122.71			\$2,595,659.05
5000 Other Expenditures and Financing Uses					
5100 Debt Service / Other Expenditures and Financing Uses			3,454,942.11		3,455,005.12
5200 Interfund Transfers - Out			9,673,112.85		13,451,932.79
Total Other Expenditures and Financing Uses			\$13,128,054.96		\$16,906,937.91
TOTAL ACTUAL EXPENDITURES & OTHER FINANCING USES	\$247,478.37	\$2,765,926.20	\$13,453,978.61		\$69,912,398.76

PSERS Salary Data (Salary Data should relate to the General Fund only)

Amount Description	Amount
Total Salary Base for salaries subject to PSERS withholding	24,180,346.54
Total Federally Funded salaries subject to PSERS withholding	548,896.55
	<hr/>

Title I Expenditure Data

Amount Description	Amount
Expenditures Funded with Current Title I Funds	411,870.01
Expenditures Funded with Carry over Title I Funds	
Total Title I Expenditure Data	<hr/> \$411,870.01 <hr/>

Title I ARRA Amount

Amount Description	Amount
Portion of Total Title I Expenditures funded with ARRA Title I	<hr/>

Benefits for Staff Relative to Collective Bargaining Agreements

	OBJECT	COVERED	NOT COVERED	TOTAL
10 General Fund	No Self Insurance data to report			
	211 Medical Insurance	4,425,123.44	378,194.09	4,803,317.53
	212 Dental Insurance	211,436.65	28,243.91	239,680.56
	215 Eye Care Insurance	56,007.86	8,332.80	64,340.66
	216 Prescription Insurance			
	271 Self-Insurance Medical Benefits			
	272 Self-Insurance Dental Benefits			
	275 Self-Insurance Eye Care Benefits			
	276 Self-Insurance Prescription Benefits			
	FUND TOTAL	\$4,692,567.95	\$414,770.80	\$5,107,338.75
50 Enterprise Fund	No Self Insurance data to report			
	211 Medical Insurance	66,632.01	3,966.84	70,598.85
	212 Dental Insurance	3,602.50	240.00	3,842.50
	215 Eye Care Insurance	801.56	51.60	853.16
	216 Prescription Insurance			
	271 Self-Insurance Medical Benefits			
	272 Self-Insurance Dental Benefits			
	275 Self-Insurance Eye Care Benefits			
	276 Self-Insurance Prescription Benefits			
	FUND TOTAL	\$71,036.07	\$4,258.44	\$75,294.51
60 Internal Service Fund	No Self Insurance data to report			
	211 Medical Insurance			
	212 Dental Insurance			
	215 Eye Care Insurance			
	216 Prescription Insurance			
	271 Self-Insurance Medical Benefits			
	272 Self-Insurance Dental Benefits			
	275 Self-Insurance Eye Care Benefits			
	276 Self-Insurance Prescription Benefits			
	FUND TOTAL			
Total of All Funds		\$4,763,604.02	\$419,029.24	\$5,182,633.26

LEA : 128323703 Indiana Area SD

Printed 11/6/2017 9:02:39 AM

Function	Special Education (Prior Year)	Nonspecial Education (Prior Year)	Total (Prior Year)	Special Education (Current Year)	Nonspecial Education (Current Year)	Total (Current Year)
2120 Guidance Services	143,461.63	1,059,059.80	1,202,521.43	159,399.01	1,141,992.48	1,301,391.49
2140 Psychological Services	28,842.35	212,919.50	241,761.85	27,502.65	197,038.99	224,541.64
2150 Speech Pathology and Audiology Services						
2160 Social Work Services						
2260 Instruction and Curriculum Development Services	222,517.24	203,130.31	425,647.55	238,505.91	218,424.78	456,930.69
2350 Legal and Accounting Services	8,901.00	33,493.00	42,394.00	10,395.50	59,453.08	69,848.58
2420 Medical Services	83,030.24	612,944.36	695,974.60	82,211.03	588,989.69	671,200.72
2440 Nursing Services						
2700 Student Transportation Services	327,400.11	1,325,695.32	1,653,095.43	276,694.04	1,256,573.77	1,533,267.81
Total	\$814,152.57	\$3,447,242.29	\$4,261,394.86	\$794,708.14	\$3,462,472.79	\$4,257,180.93

(PRINCIPAL AMOUNTS ONLY)

GOVERNMENTAL FUNDS/ ACTIVITIES

	Short-Term Borrowing	General Obligation Bonds/Notes	Authority Building Obligations	Other Long-Term Debt	Other Post-Employment Benefits (OPEB)	Compensated Absences	Net Pension Liability	Total
1. Debt at Beginning of Fiscal Year		31,498,000.00	1,203,026.00		284,634.00	723,141.00	79,570,000.00	113,278,801.00
2. Additional Debt Incurred During Year		9,925,000.00			3,155,460.00		11,615,000.00	24,695,460.00
3. Retirements and Repayments		2,674,000.00	123,537.00			228,350.00		3,025,887.00
4. Debt at End of Fiscal Year		38,749,000.00	1,079,489.00		3,440,094.00	494,791.00	91,185,000.00	134,948,374.00
5. Accreted Interest at End Of Fiscal Year								
6. Total Debt and Accreted Interest		38,749,000.00	1,079,489.00		3,440,094.00	494,791.00	91,185,000.00	134,948,374.00
7. Current Portion P&I - Due within 1 year		3,731,177.00	149,224.00					3,880,401.00
8. Interest Paid during current fiscal year		631,329.00	26,084.00					657,413.00

(PRINCIPAL AMOUNTS ONLY)

PROPRIETARY FUNDS

- 1. Debt at Beginning of Fiscal Year
- 2. Additional Debt Incurred During Year
- 3. Retirements and Repayments
- 4. Debt at End of Fiscal Year
- 5. Accreted Interest at End Of Fiscal Year
- 6. Total Debt and Accreted Interest
- 7. Current Portion P&I - Due within 1 year
- 8. Interest Paid during current fiscal year

Total Principal and Interest Payments Made by Your School - All Funds

Function	Fund		Principal (910)	Principal (920)	Interest (830)	Total (Principal +Interest)	Misc Other Uses (990)
5110	10	General Fund					
5110	20	Special Revenue Funds					
5110	30	Capital Projects Funds					
5110	40	Debt Service Fund	2,797,537.45		657,404.66	3,454,942.11	
5110	90	Permanent Fund					
5120	10	General Fund					
5120	20	Special Revenue Funds					
5120	30	Capital Projects Funds					
5120	40	Debt Service Fund					

Total Debt Payments - Governmental Funds			\$2,797,537.45		\$657,404.66	\$3,454,942.11	
---	--	--	-----------------------	--	---------------------	-----------------------	--

Function	Fund		Principal (910)	Principal (920)	Interest (830)	Total (Principal +Interest)
5110	50	Enterprise Fund				
5110	60	Internal Service Fund				
5120	50	Enterprise Fund				
5120	60	Internal Service Fund				

Total Debt Payments - Proprietary Funds						
--	--	--	--	--	--	--

Debt Details
Governmental Funds/ Activities

Debt Category	Debt Issue Date (MM/YYYY)	Principal Amounts Only				Current Portion Due Within One Year (Principal and Interest)	Interest Paid During Fiscal Year
		Debt at Beginning of Fiscal Year	Additions	Reductions / Repayments	Debt at End of Fiscal Year		
General Obligation Bonds/Notes – CIB	12/2016		9,925,000.00		9,925,000.00	370,200.00	
General Obligation Bonds/Notes – CIB	08/2015	5,249,000.00		64,000.00	5,185,000.00	187,579.00	69,803.00
General Obligation Bonds/Notes – CIB	08/2015	3,000,000.00		1,000.00	2,999,000.00	71,227.00	70,251.00
General Obligation Bonds/Notes – CIB	03/2014	6,419,000.00		2,579,000.00	3,840,000.00	2,655,692.00	74,378.00
General Obligation Bonds/Notes – CIB	04/2013	6,910,000.00		5,000.00	6,905,000.00	169,891.00	164,959.00
General Obligation Bonds/Notes – CIB	08/2012	9,920,000.00		25,000.00	9,895,000.00	276,588.00	251,938.00
Authority Building Obligations – CIB	02/2012	1,203,026.00		123,537.00	1,079,489.00	149,224.00	26,084.00
Compensated Absences		723,141.00		228,350.00	494,791.00		
Other Post-Employment Benefits (OPEB)		284,634.00	3,155,460.00		3,440,094.00		
Net Pension Liability		79,570,000.00	11,615,000.00		91,185,000.00		
Totals for Debt Entered:		\$113,278,801.00	\$24,695,460.00	\$3,025,887.00	\$134,948,374.00	\$3,880,401.00	\$657,413.00

General Fund (10)

Section 1: Tuition/Purchased Services as Reported within Expenditure Detail

	Amount
Tuition Reported in General Fund Expenditures 1000-560	2,372,174.79
Purchased Services in General Fund Expenditures 1000-594 and 1000-597	

Section 1 Total	\$2,372,174.79
------------------------	-----------------------

Section 2: Tuition Paid to Institution Types During Fiscal Year

	Tuition Paid For Nonspecial Education	Tuition Paid For Special Education	Total
1 1306 Institutions			
2 Institutionalized Children's Programs			
3 Juveniles Incarcerated in Adult Facilities			
4 Residential Treatment Facilities			
5 Other Local Education Agencies	25,832.46	143,209.98	169,042.44
6 Brick and Mortar Charter Schools			
7 Cyber Charter Schools	580,073.51	245,723.52	825,797.03
8 Career and Technology Centers	696,611.65		696,611.65
9 Approved Private Schools	100,651.44	563,873.95	664,525.39
10 PA Chartered Schools for the Deaf and Blind			
11 Private Residential Rehabilitative Institutions	16,198.28		16,198.28
12 Juvenile Detention Centers			
13 Special Program Jointures			
14 Other Tuition Not Included Elsewhere In This Section			
Section 2 Total	\$1,419,367.34	\$952,807.45	\$2,372,174.79

Food Service / Cafeteria Operations Fund (51)

3000 Operation of Non-Instructional Services

Total

100 Personnel Services – Salaries

100 Personnel Services – Salaries 128,956.00

Total Personnel Services – Salaries \$128,956.00

200 Personnel Services – Employee Benefits

210 Group Insurance – Contracted Provider 75,216.00

220 Social Security Contributions 9,808.00

230 PSERS Retirement Contributions 37,236.00

250 Unemployment Compensation 380.00

260 Workers’ Compensation 645.00

292 Health Savings Accounts 325.00

Total Personnel Services – Employee Benefits \$123,610.00

300 Purchased Professional and Technical Services

300 Purchased Professional and Technical Services 838.00

Total Purchased Professional and Technical Services \$838.00

500 Other Purchased Services

570 Food Service Management 954,154.00

Total Other Purchased Services \$954,154.00

600 Supplies

610 General Supplies 278.00

630 Food 2,031.00

Total Supplies \$2,309.00

700 Property

740 Depreciation 12,180.00

Total Property \$12,180.00

800 Other Objects

810 Dues and Fees 4,452.00

Total Other Objects \$4,452.00

Total 3000 Operation of Non-Instructional Services \$1,226,499.00

Food Service / Cafeteria Operations Fund (51)

	<u>Elementary</u>	<u>Secondary</u>	<u>Federal</u>	<u>Total</u>
3100 Food Services				
100 Personnel Services – Salaries				
100 Personnel Services – Salaries				128,956.00
Total Personnel Services – Salaries				\$128,956.00
200 Personnel Services – Employee Benefits				
210 Group Insurance – Contracted Provider				75,216.00
220 Social Security Contributions				9,808.00
230 PSERS Retirement Contributions				37,236.00
250 Unemployment Compensation				380.00
260 Workers' Compensation				645.00
292 Health Savings Accounts				325.00
Total Personnel Services – Employee Benefits				\$123,610.00
300 Purchased Professional and Technical Services				
300 Purchased Professional and Technical Services				838.00
Total Purchased Professional and Technical Services				\$838.00
500 Other Purchased Services				
570 Food Service Management				954,154.00
Total Other Purchased Services				\$954,154.00
600 Supplies				
610 General Supplies				278.00
630 Food				2,031.00
Total Supplies				\$2,309.00
700 Property				
740 Depreciation				12,180.00
Total Property				\$12,180.00
800 Other Objects				
810 Dues and Fees				4,452.00
Total Other Objects				\$4,452.00
Total 3100 Food Services				\$1,226,499.00

Other Enterprise Funds (58)

1000 Instruction	<u>Total</u>
600 <u>Supplies</u>	
610 General Supplies	8,009.00
Total Supplies	\$8,009.00
800 <u>Other Objects</u>	
810 Dues and Fees	30.00
Total Other Objects	\$30.00
Total 1000 Instruction	\$8,039.00

Other Enterprise Funds (58)

1100 Regular Programs – Elementary / Secondary	<u>Elementary</u>	<u>Secondary</u>	<u>Federal</u>	<u>Total</u>
600 Supplies				
610 General Supplies				8,009.00
Total Supplies				\$8,009.00
800 Other Objects				
810 Dues and Fees				30.00
Total Other Objects				\$30.00
Total 1100 Regular Programs – Elementary / Secondary				\$8,039.00

Other Enterprise Funds (58)

1110 Regular Programs

Elementary

Secondary

Federal

Total

600 Supplies

610 General Supplies

8,009.00

Total Supplies

\$8,009.00

800 Other Objects

810 Dues and Fees

30.00

Total Other Objects

\$30.00

Total 1110 Regular Programs

\$8,039.00

	<u>Food Service(51)</u>	<u>Child Care Operations(52)</u>	<u>Other Enterprise(58)</u>	<u>Internal Service(60)</u>	<u>Total</u>
1000 Instruction					
1100 Regular Programs - Elementary / Secondary			8,039.00		8,039.00
Total Instruction			\$8,039.00		\$8,039.00
3000 Operation of Non-Instructional Services					
3100 Food Services	1,226,499.00				1,226,499.00
Total Operation of Non-Instructional Services	\$1,226,499.00				\$1,226,499.00
TOTAL ACTUAL EXPENDITURES & OTHER FINANCING USES	\$1,226,499.00		\$8,039.00		\$1,234,538.00