

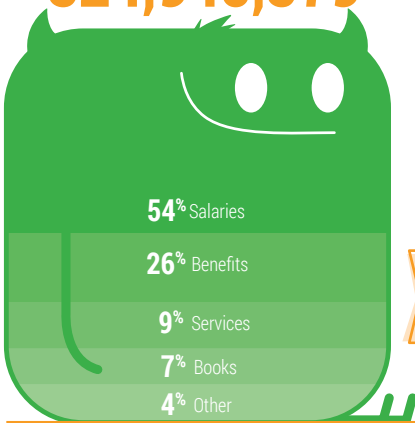
LOCAL CONTROL ACCOUNTABILITY PLAN

Kern HSD
2018 - 2019 Highlights

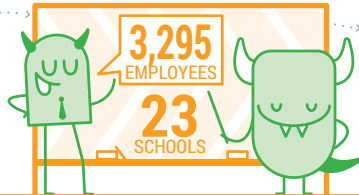


DISTRICT OVERVIEW

Kern HSD's total 2018-19 budget...
\$524,940,579



- SPENT ON -

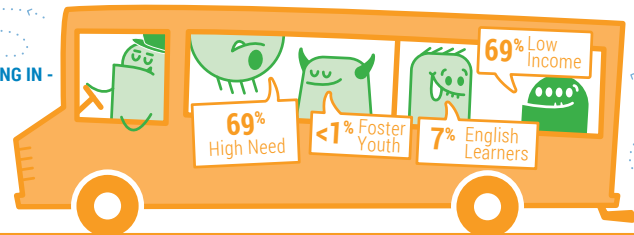


- WHO SERVE -

39,520 Students

- RESULTING IN -

\$13,283
spent per student annually.



- WHO ARE -

GOAL #1

HIGHLY QUALIFIED, TRAINED & DIVERSE TEACHERS

INVESTING \$23,483,280

HIGHLIGHTED OUTCOMES

100% FULLY CREDENTIALLED & APPROPRIATELY ASSIGNED TEACHERS

= 100% MAINTAIN ENGLISH LEARNERS TEACHER AUTHORIZATION

↑ 5.0 INCREASE CONTENT & LITERACY STANDARDS IMPLEMENTATION

= 5.0

MAINTAIN ELD & CCSS STANDARDS ACCESS

GOAL #2

RELEVANT, INNOVATIVE & AMPLE INSTRUCTIONAL RESOURCES

INVESTING \$14,572,002

HIGHLIGHTED OUTCOMES

INCREASE EL RECLASSIFICATION RATE
↑ 3.3%

MAINTAIN APPROPRIATE EL CLASS
= 100%

GOAL #3

PREPARE GRADUATES FOR POST SECONDARY EXPERIENCE

INVESTING \$13,638,462

HIGHLIGHTED OUTCOMES

↑ 54% ELA INCREASE CAASPP SCORES
↑ 25% MATH

↑ 51% INCREASE AP 3+ SCORES

GOAL #4

ENHANCE POSITIVE, SAFE & SUPPORTIVE ENVIRONMENTS

INVESTING \$18,883,960

HIGHLIGHTED OUTCOMES

↑ 86% PARENTS FEEL WELCOMED & CONNECTED

↑ 96%+ INCREASE ATTENDANCE RATE

DECREASE CHRONIC ABSENTEEISM RATE
↓ 12.3%

↓ 11.6% Suspension

DECREASE SUSPENSION & EXPULSION RATE

↓ <0.02% Expulsion



For additional LCAP resources use the QR code or go to www.goboinfo.com and search for your district.

Kern High School District, 5801 Sundale Ave, Bakersfield, CA 93309;
Phone: (661) 827-3100; Website: www.kernhigh.org; CDS#: 1563529000000



©2018 solutions@goboinfo.com
(888) 938-7779



TELL US WHAT YOU THINK

WHICH LCAP ITEM IS MOST IMPORTANT FOR YOUR SCHOOL?

WHAT DOES YOUR SCHOOL DO BEST?

WHERE DOES YOUR SCHOOL NEED IMPROVEMENT?

