

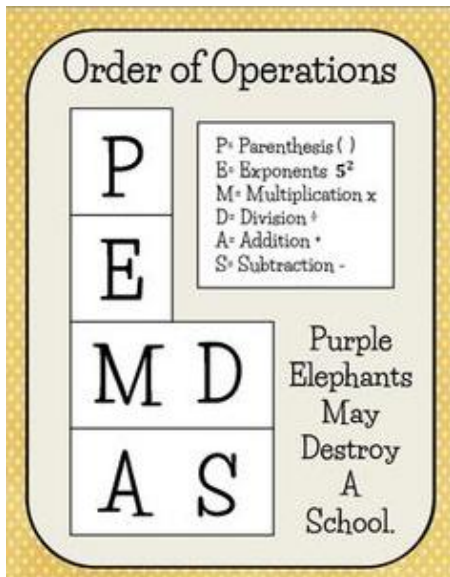


SAMPLES OF STANDARDS STUDENTS ARE LEARNING THIS NINE WEEKS:

4th Grade Math

STANDARDS: 4.OA.5, 4.MD.5.a-b, 4.MD.6, 4.MD.7, 4.G.1, 4.G.2, 4.G.3

4.OA.5



Example: $(9+1) \div (5-3) \times 4 = 20$

$(9+1) \div (5-3) \times 4 =$ ↑ ↑	Because there are parentheses , you will solve them first .
$(9+1) = 10$ and $(5-3)=2$	
$10 \div 2 \times 4$	Once solved, rewrite the new equation.
$10 \div 2 \times 4$ →	Now that multiplication and division are left, you will solve the problem working left to right.
$10 \div 2 = 5$	
$5 \times 4 = 20$	Write the new equation and solve.

Pattern Types

Type	Example
even + even = even	Rule: +4 2, 6, 10, 14
odd + odd = even	Rule: +3 5, 8, 11, 14
odd + even = odd	Rule: + 2 5, 7, 9, 11
even x even = even	Rule: x 4 2, 8, 24, 96
odd x odd = odd	Rule: x3 5, 15, 45, 135
even x odd = even	Rule: x3 4, 12, 36, 108

4.MD.5a,b

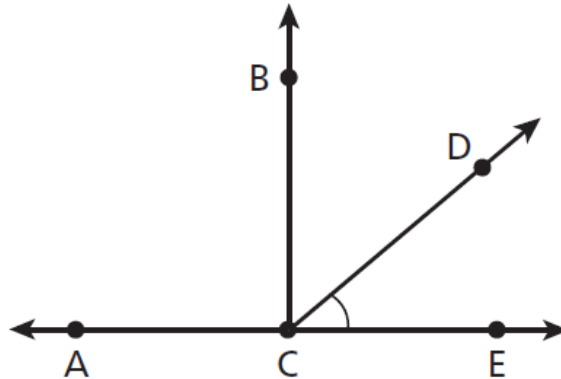
Which is smaller: An angle showing a turn through $\frac{1}{8}$ of a circle or an angle showing a turn through $\frac{1}{3}$ of a circle? Explain your answer.

Correct Answer:

The angle that shows a turn through $\frac{1}{8}$ of a circle is smaller. Possible explanation: If you divide a circle into 8 equal parts, each part will be smaller than if you divide the circle into 3 equal parts.

4.MD.6

What is the measure of angle DCE?



- A 40°
- B 50°
- C 90°
- D 130°

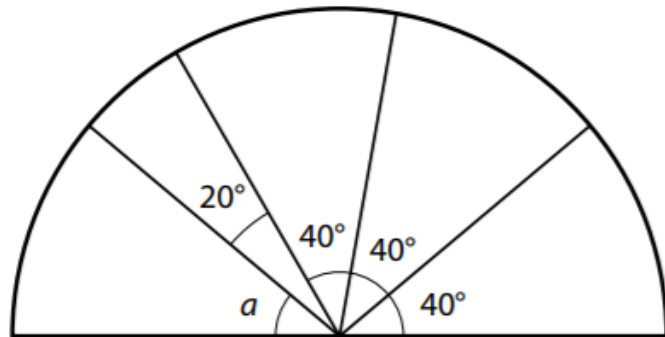
Answer A is correct.

4.MD.7

A piece of stained glass art forms a half circle. The part labeled a is green.

What is the measure of angle a ?

- A 180°
- B 140°
- C 60°
- D 40°

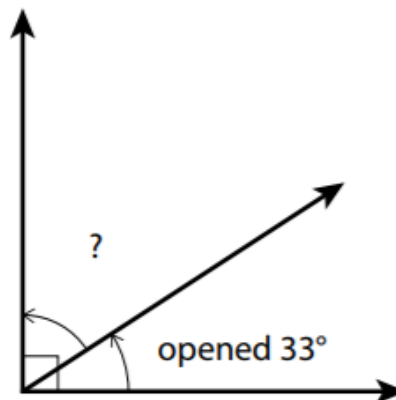


Correct Answer: D

A suitcase can be opened up to 90° . The suitcase is opened 33° as shown.

Up to how many more degrees can the suitcase be opened?

- A 57°
- B 67°
- C 90°
- D 123°



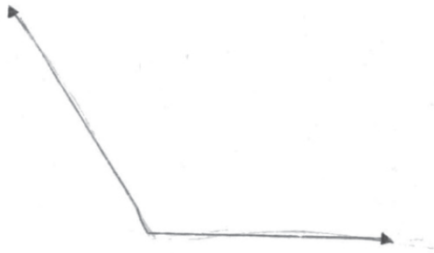
Correct Answer: A

4.G.1

Draw an obtuse triangle.

What is the measure, in degrees, of the angle you drew?

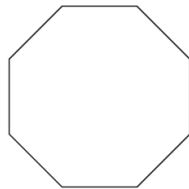
Example of a correct answer:



Answer 120 degrees

4.G.2

Which statement best classifies the figure below?



- A The figure has opposite sides that are perpendicular and angles that measure 135° .
- B The figure has opposite sides that are perpendicular and angles that measure 45° .
- C The figure has opposite sides that are parallel and angles that measure 135° .
- D The figure has opposite sides that are parallel and angles that measure 45° .

Answer C is correct.

4.G.3.

Does the shape have at least one line of symmetry?

Choose *Yes* or *No* for each shape.

A  Yes No

B  Yes No

C  Yes No

D  Yes No

E  Yes No

Correct Answer:

- a) Yes
- b) Yes
- c) Yes
- d) Yes
- e) No