

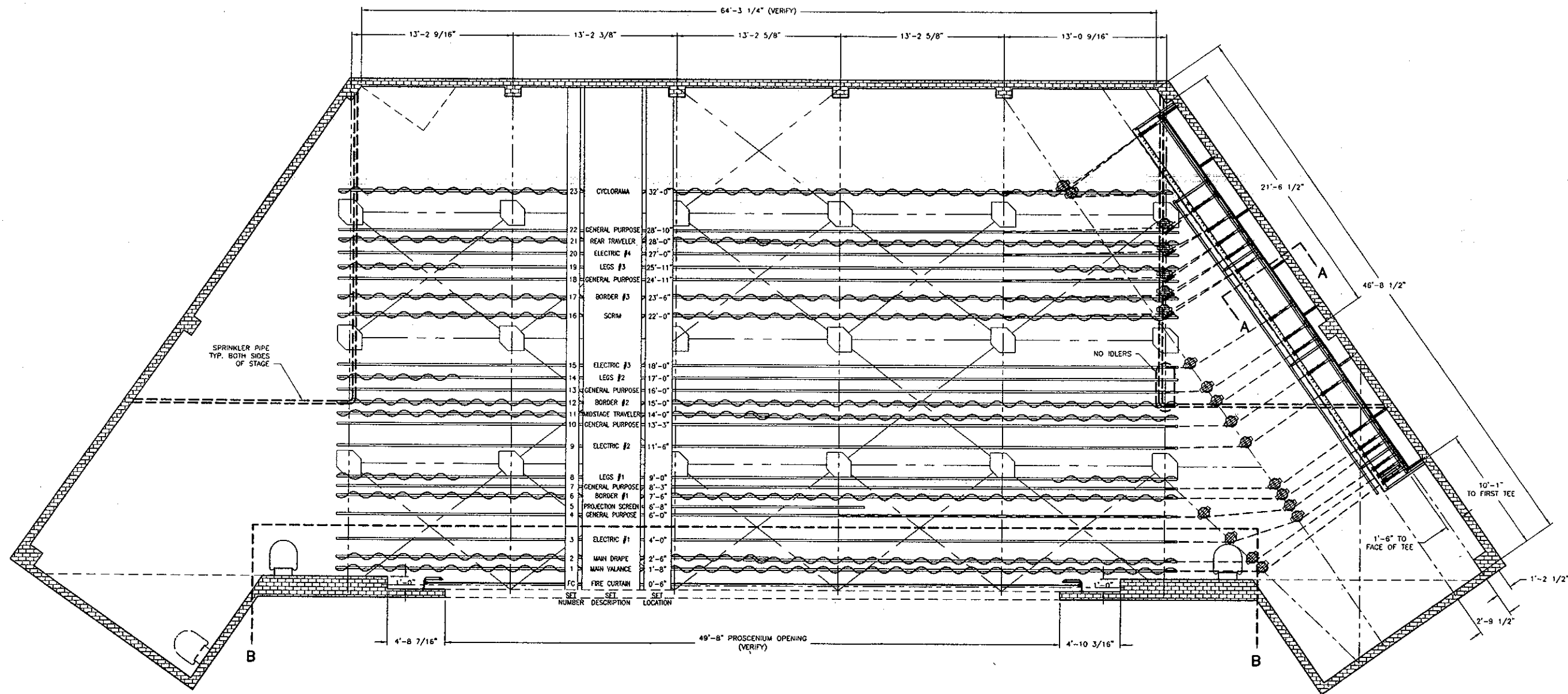
SET NO.	DISTANCE FROM PROSCENIUM WALL TO THE C/L OF:			SET DESCRIPTION	HDBLK DIA.	LFTBLK DIA.	NO. OF PICK-UPS	ARBOR LENGTH	BATTEN LENGTH	RIGGING	CURTAIN SPECIFICATIONS				TRACK SPECIFICATIONS	REMARKS
	SET	HDBLK	IDLERS								SIZE	FULLNESS	MATERIAL	COLOR		
FC	0'-6"	0'-8"	D.S.	FIRE CURTAIN	12"	8"	9	N/A	51'-10"	BRAIL WINCH	33'-3" H x 51'-10" W	0%	#CSC-G2WC	BEIGE	-	-
1	1'-8"	10'-5"	U.S.	MAIN VALANCE	12"	8"	6	5'-6"	68'-0"	COUNTERWEIGHT	12'-0" H x 65'-0" W	50%	25oz. VELOUR	NAVY 1118	-	-
2	2'-6"	11'-1"	U.S.	MAIN DRAPE	12"	8"	6	5'-6"	68'-0"	COUNTERWEIGHT	28'-0" H x 35'-0" W (2)	50%	25oz. VELOUR	NAVY 1118	ADC TRACK #282 x 35'-0" (2)	-
3	4'-0"	11'-9"	U.S.	ELECTRIC #1	12"	8"	6	8'-0"	68'-0" (2)	COUNTERWEIGHT	-	-	-	-	-	-
4	6'-0"	13'-1"	U.S.	GENERAL PURPOSE	12"	8"	6	5'-6"	68'-0"	COUNTERWEIGHT	-	-	-	-	-	-
5	6'-8"	N/A	N/A	PROJECTION SCREEN	N/A	N/A	2	N/A	18'-0"	DEAD HUNG	-	-	-	-	-	RE-HANG EXISTING MOVIE SCREEN
6	7'-6"	13'-9"	U.S.	BORDER #1	12"	8"	6	5'-6"	68'-0"	COUNTERWEIGHT	12'-0" H x 65'-0" W	50%	25oz. VELOUR	BLACK	-	-
7	8'-3"	15'-1"	U.S.	GENERAL PURPOSE	12"	8"	6	5'-6"	68'-0"	COUNTERWEIGHT	-	-	-	-	-	-
8	9'-0"	N/A	N/A	LEGS #1	N/A	N/A	6	N/A	68'-0"	DEAD HUNG	28'-0" H x 10'-0" W (2)	50%	25oz. VELOUR	BLACK	-	-
9	11'-6"	19'-1"	U.S.	ELECTRIC #2	12"	8"	6	8'-0"	68'-0" (2)	COUNTERWEIGHT	-	-	-	-	-	-
10	13'-3"	21'-1"	U.S.	GENERAL PURPOSE	12"	8"	6	5'-6"	68'-0"	COUNTERWEIGHT	-	-	-	-	-	-
11	14'-0"	N/A	N/A	MIDSTAGE TRAVELER	N/A	N/A	6	N/A	68'-0"	DEAD HUNG	28'-0" H x 35'-0" W (2)	50%	25oz. VELOUR	BLACK	ADC TRACK #282 x 35'-0" (2)	-
12	15'-0"	23'-1"	U.S.	BORDER #2	12"	8"	6	5'-6"	68'-0"	COUNTERWEIGHT	12'-0" H x 65'-0" W	50%	25oz. VELOUR	BLACK	-	-
13	16'-0"	24'-5"	U.S.	GENERAL PURPOSE	12"	8"	6	5'-6"	68'-0"	COUNTERWEIGHT	-	-	-	-	-	-
14	17'-0"	N/A	N/A	LEGS #2	N/A	N/A	6	N/A	68'-0"	DEAD HUNG	28'-0" H x 10'-0" W (2)	50%	25oz. VELOUR	BLACK	-	-
15	18'-0"	26'-5"	U.S.	ELECTRIC #3	12"	8"	6	8'-0"	68'-0" (2)	COUNTERWEIGHT	-	-	-	-	-	-
16	22'-0"	31'-1"	U.S.	SCRIM	12"	8"	6	5'-6"	68'-0"	COUNTERWEIGHT	28'-0" H x 65'-0" W	SEAMLESS	SHARKTOOTH	BLACK	-	-
17	23'-6"	32'-5"	U.S.	BORDER #3	12"	8"	6	5'-6"	68'-0"	COUNTERWEIGHT	12'-0" H x 65'-0" W	50%	25oz. VELOUR	BLACK	-	-
18	24'-11"	33'-9"	U.S.	GENERAL PURPOSE	12"	8"	6	5'-6"	68'-0"	COUNTERWEIGHT	-	-	-	-	-	-
19	25'-11"	N/A	N/A	LEGS #3	N/A	N/A	6	N/A	68'-0"	DEAD HUNG	28'-0" H x 10'-0" W (2)	50%	25oz. VELOUR	BLACK	-	-
20	27'-0"	35'-1"	U.S.	ELECTRIC #4	12"	8"	6	8'-0"	68'-0" (2)	COUNTERWEIGHT	-	-	-	-	-	-
21	28'-0"	N/A	N/A	REAR TRAVELER	N/A	N/A	6	N/A	68'-0"	DEAD HUNG	28'-0" H x 35'-0" W (2)	-	25oz. VELOUR	BLACK	ADC TRACK #282 x 35'-0" (2)	-
22	28'-10"	37'-1"	U.S.	GENERAL PURPOSE	12"	8"	6	5'-6"	68'-0"	COUNTERWEIGHT	-	-	-	-	-	-
23	32'-0"	44'-5"	U.S.	CYCLORAMA	12"	8"	6	5'-6"	67'-6"	COUNTERWEIGHT	28'-0" H x 65'-0" W	SEAMED	MUSLIN	NATURAL	-	-

ARCHITECT	ANDERSON, ERNSTEN AND WESTRICK
ENGINEER	
CONSULTANT	
CONTRACTOR	BARTON MALOW COMPANY
JOB TITLE	LAKEVIEW HIGH SCHOOL
LOCATION	SAINT CLAIR SHORES, MI
DWG. FILE	11439SR01.DWG
DATE	03/14/05
CHECKED	
DRAWN	RRW
SCALE	1/2" = 1'-0"
SHEET TITLE	STAGE EQUIPMENT SCHEDULE
REV LEVEL	A
JOB NO.	11439
REV.	
DESCRIPTION	
DATE	05/25/05

NOTICE TO ALL PERSONS RECEIVING THIS DRAWING:
 THE OWNER ASSUMES RESPONSIBILITY FOR THE ACCURACY OF THE INFORMATION AND IS NOT RESPONSIBLE FOR THE CONSTRUCTION OF THE DRAWING OR THE INFORMATION CONTAINED THEREIN. THE USER OF THIS DRAWING SHALL BE RESPONSIBLE FOR OBTAINING ALL NECESSARY PERMITS AND FOR ALL COSTS, INCLUDING EXPENSES TO OBTAIN OR LOAN RECORDS, THE MONTHS OF YEAR, AND THE STAGE EQUIPMENT COMPANY.

SECOB
 The Stage Equipment Company
 Champlin, MN
 (763) 506-8800

SR
1



PLAN VIEW - STAGE EQUIPMENT
SCALE: 1/4"=1'-0"

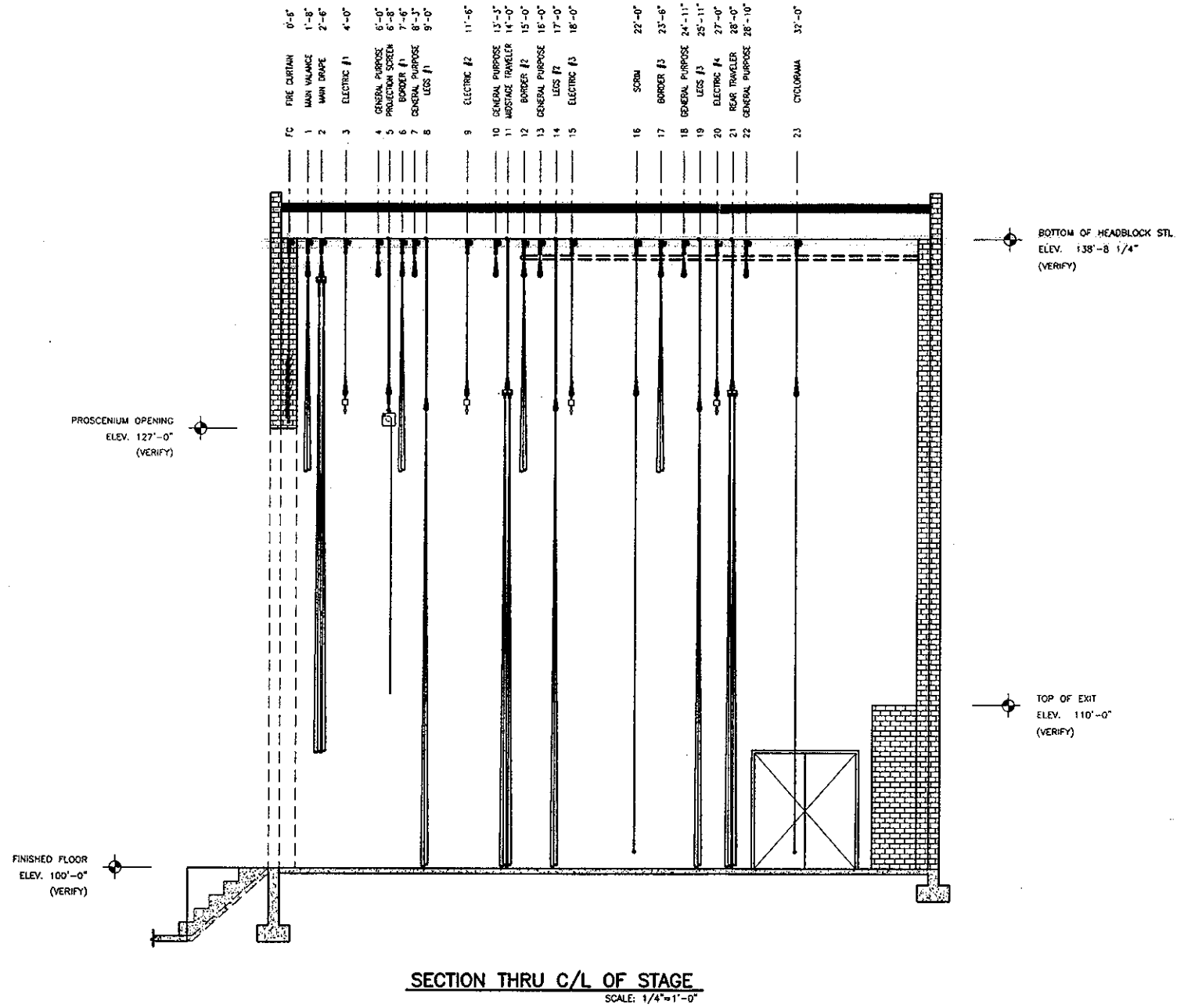
DATE	02/14/05	CHECKED	RRW	DRAWN	RRW	SCALE	1/4" = 1'-0"	SHEET TITLE	PLAN VIEW - STAGE EQUIPMENT	JOB TITLE	LAKEVIEW HIGH SCHOOL	LOCATION	ST. CLAIR SHORES, MI	DWG. FILE	11439SR02.DWG	CONTRACTOR	BARTON MALOW COMPANY	CONSULTANT	ANDERSON, ECKSTEIN AND WESTRICK	ARCHITECT	ENGINEER	REVISED PER CONSULTANT REVIEW	RRW	05/26/05
------	----------	---------	-----	-------	-----	-------	--------------	-------------	-----------------------------	-----------	----------------------	----------	----------------------	-----------	---------------	------------	----------------------	------------	---------------------------------	-----------	----------	-------------------------------	-----	----------

NOTICE TO ALL PERSONS VIEWING THIS DRAWING: THE DRAWING IS THE PROPERTY OF THE STAGE EQUIPMENT COMPANY AND IS TO BE USED ONLY FOR THE PROJECT AND SITE SPECIFICALLY IDENTIFIED HEREON. IT IS NOT TO BE REPRODUCED, COPIED, OR TRANSMITTED IN ANY FORM OR BY ANY MEANS, ELECTRONIC OR MECHANICAL, INCLUDING PHOTOCOPYING, RECORDING, OR BY ANY INFORMATION STORAGE AND RETRIEVAL SYSTEM, WITHOUT THE WRITTEN CONSENT OF THE STAGE EQUIPMENT COMPANY.

REV. LEVEL: **A** JOB NO.: **11439**

SECOB
The Stage Equipment Company
Champlin, MN
(763) 506-8800

SR
2



SECTION THRU C/L OF STAGE
SCALE: 1/4"=1'-0"

NOTE TO ALL PERSONS VIEWING THIS DRAWING:
THIS DRAWING CONTAINS CONFIDENTIAL AND PROPRIETARY INFORMATION AND IS
THE PROPERTY OF SECDA. IT IS TO BE USED ONLY FOR THE PROJECT AND SITE
AND NOT BE COPIED, REPRODUCED, DISCLOSED TO OTHERS OR FOR ANY OTHER
PURPOSE WITHOUT THE WRITTEN CONSENT OF SECDA, THE STAGE EQUIPMENT COMPANY.

REV LEVEL: A
JOB NO.: 11439

SECDA
The Stage Equipment Company
Champlin, MN
(763) 506-8800

SR
3

SCALE	1/4" = 1'-0"	
SHEET TITLE	SECTION THRU C/L OF STAGE	
DRAWN	RRW	
CHECKED		
DATE	05/14/05	
JOB TITLE	LAKEVIEW HIGH SCHOOL	
LOCATION	SAINT CLAIR SHORES, MI	
DWG. FILE	11439SR03.DWG	
ARCHITECT	ANDERSON, ECKSTEIN AND WESTRICK	
ENGINEER		
CONSULTANT		
CONTRACTOR	BARTON MALOW COMPANY	
REV.	A	REVISED PER CONSULTANT REVIEW
REV. DESCRIPTION		
REV. BY	RRW	05/25/05
DATE		