



Mabel Paine Elementary School PTA

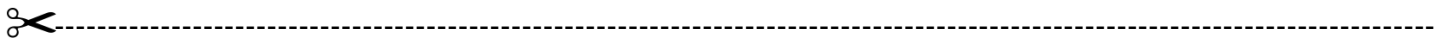
# CANDY GRAMS

*Show someone how special they are!!*

*Order a valentine candy for your friends, family,  
teacher or school staff! It's easy!*

Fill out the order form below and personalize the attached Valentine's Grams. (Feel free to make extra copies.) Return the below portion and grams to school by Tuesday, February 12th. Additional Valentine Grams can be downloaded and printed from our school website: [www.mabelpaine.org](http://www.mabelpaine.org) (Thursday mailbag folder).

**Cupid will attach a candy bracelet to your Valentines Candy Grams and deliver on Valentine's Day!!!**




Student's Name: \_\_\_\_\_

Teacher: \_\_\_\_\_

Number of Grams: \_\_\_\_\_ x \$1.00= \_\_\_\_\_

- Please make check payable to Mabel Paine PTA
- Fill out the attached grams and send in with your check and order form.
- All Valentine Candy Grams will be delivered on Thursday February 14, 2019.

NOTE: Please cut out the grams and place in an envelope or baggie to turn in. Thank you!



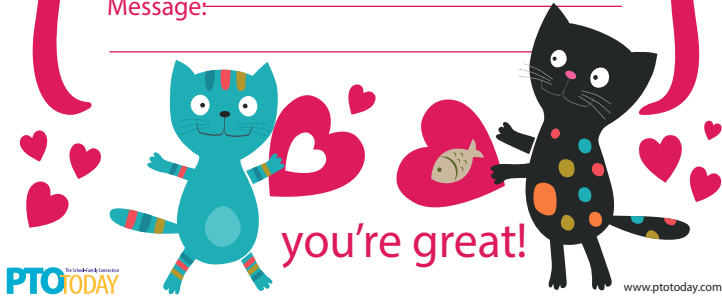
# Valentine's Day

To: \_\_\_\_\_

Grade/Classroom: \_\_\_\_\_

From: \_\_\_\_\_

Message: \_\_\_\_\_



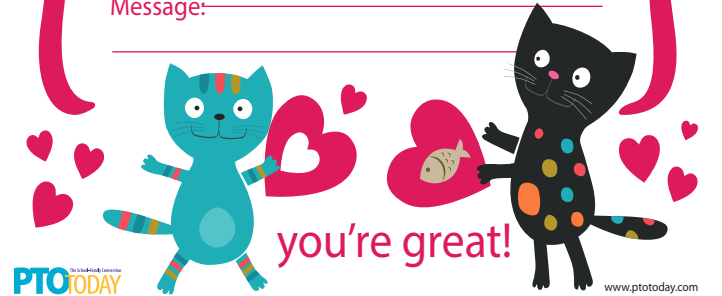
# Valentine's Day

To: \_\_\_\_\_

Grade/Classroom: \_\_\_\_\_

From: \_\_\_\_\_

Message: \_\_\_\_\_



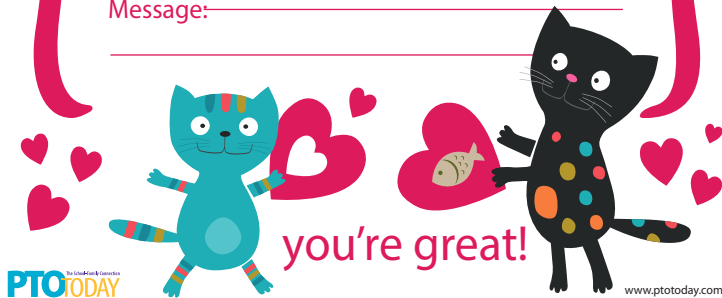
# Valentine's Day

To: \_\_\_\_\_

Grade/Classroom: \_\_\_\_\_

From: \_\_\_\_\_

Message: \_\_\_\_\_



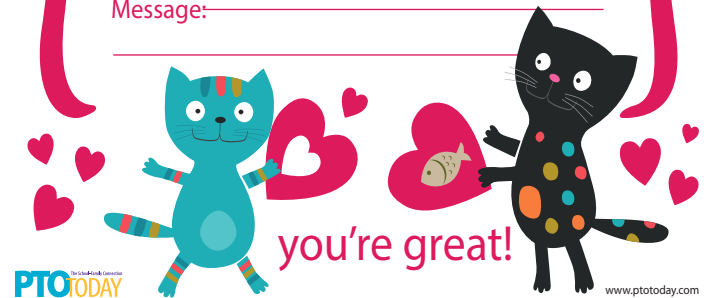
# Valentine's Day

To: \_\_\_\_\_

Grade/Classroom: \_\_\_\_\_

From: \_\_\_\_\_

Message: \_\_\_\_\_



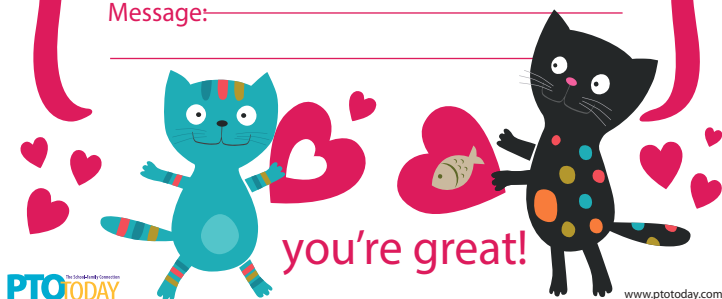
# Valentine's Day

To: \_\_\_\_\_

Grade/Classroom: \_\_\_\_\_

From: \_\_\_\_\_

Message: \_\_\_\_\_



# Valentine's Day

To: \_\_\_\_\_

Grade/Classroom: \_\_\_\_\_

From: \_\_\_\_\_

Message: \_\_\_\_\_

