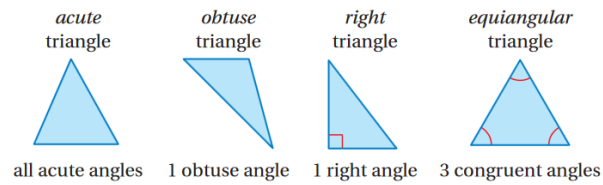


Lesson 7.3a Classifying Triangles

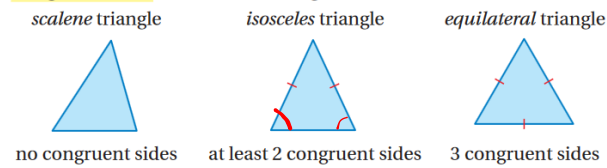
7.3a Classifying Triangles

Classifying Triangles Using Angles

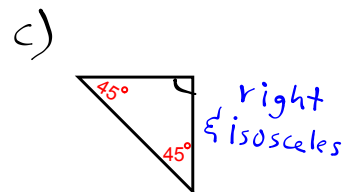
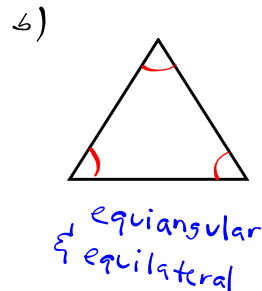
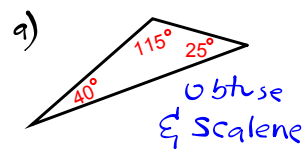


Classifying Triangles Using Sides

Congruent sides have the same length.

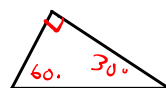


Ex. 1 Classify the triangles by its sides and angles.

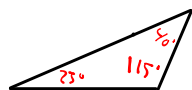


Ex. 2

a) 30-60-90



b) 115°-40°-25°



HW: p. 286 #1-27 odd