

**THURSDAY, JANUARY 24, 2019**

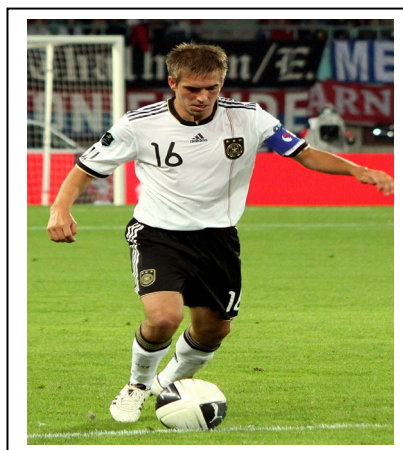
**WILDCATS!**

**RELATIONSHIPS . RIGOR . RELEVANCE**

**AOD – MS. MANFREDI**

**Odd Day schedule:**

**Period 1: 7:00 – 8:00am**  
**Tutorial: 8:00 – 8:20am**  
**Period 2/3: 8:25 – 10:13am**  
**Brunch: 10:13 – 10:28am**  
**Period 4/5: 10:35 – 12:15am**  
**Lunch: 12:15 – 12:55pm**  
**Period 6/7: 1:05 – 2:45pm**



**Thursday, January 24, Boys Soccer vs Valencia @ WR – JV/FROSH @ 3:15**

**Friday, January 25, Varsity Boys Soccer vs Valencia @ WR – 1pm**

**Friday, January 25, Hockey vs Cougars @ Ice Station Valencia – 6:45pm**

**Friday, January 25, Girls Soccer vs Valencia @ Valencia – V 5pm/ JV 6:30/ F 3pm**

**Friday, January 25, Girls Basketball vs Valencia @ WR – V 5pm/ JV 3:30/ F 6:30**

**Friday, January 25, Boys Basketball vs Valencia @ WR – V 6:30/ JV 3:30/ F 5pm**

## ----- Counseling -----

**PSAT** tests are available to be picked up outside the Counseling Office today at Brunch and Lunch

If you took the PSAT in October, you must come pick up your test booklet and test scores.

## ----- Clubs/Sports/ASB/Library -----

### - Announcements -

**Open Period Stickers** - Stickers are available in front of the SRC (200 building) during tutorial, brunch, and lunch.

---

**Spring semester is almost here for COC!** If you need help registering, please see Mrs. Vander Leek today in the College and Career Center.

---

**Attention Wildcats!** A representative from Biola University will be at West Ranch on Tuesday January 29<sup>th</sup> during lunch (12:15-12:50). All students are welcome to stop by the College and Career Center to ask questions and learn more about the school. This event is open to students only.

---

**Attention Juniors and Seniors** – If you are interested in taking a College Now Class that earns elective credit and college credit, then sign up for MEA 100. This a CSU transferable course that earns elective credit toward graduation as college credit. The class will meet here on campus Mondays and Wednesdays from 3:30 to 5:00 pm. For more information or to sign up, go see your counselor today.

## -Clubs -

**CFS** – Applications will be collected in room 303 NEXT THURSDAY AND FRIDAY before school and at lunch. CSF membership is open to 9-12 grade students. EVERYONE must reapply every semester. Applications and directions are on the CSF website, lined on the school website.

---

**NHS** – New member applications for NHS are now available and are due on January 25<sup>th</sup>. Current members and new applicants must join the remind by texting “@wr-nhs” to 810-10.

---

**Athletes in Action** will be meeting today to talk about the upcoming essential drive The Bridge to Home. We will meet in room 513. See you there!