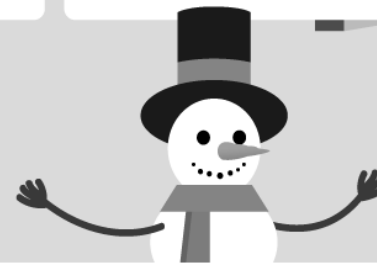


Monday	Tuesday	Wednesday	Thursday	Friday
<p>Sloppy Joe 3 Pizza Munchable Mini Corn Dogs Potato Triangles Seasoned Green Beans Fresh Apple</p>	<p>Chicken Parmesan 4 Breaded Pork Chop Garlic Breadstick Grilled Chicken Salad (3rd-5th) Noodles Green Peas Fresh Baby Carrots Fruit Cup</p>	<p>Turkey & Bacon Wrap 5 Salisbury Steak Chicken Wing Bites Dinner Roll Whipped Potatoes Broccoli w/Cheese Sauce Fresh Orange Wedges</p>	<p>Frito Pie 6 Chicken Drumsticks Cornbread Breaded Chicken Strip Salad (3rd-5th) Charro Beans Sweet Potato Fries Applesauce Parfait</p>	<p>Pepperoni Pizza 7 Hot Dog Tuna Salad on Sub Seasoned Corn Salad w/tomatoes Canned Fruit</p>
<p>Chicken Nuggets 10 Ham & Cheese Wrap Grilled Cheese Sandwich Whipped Potatoes Roasted Broccoli Dinner Roll Fresh Apple</p>	<p><u>EARLY OUT - UIL</u> 11 Hamburgers Pizza Pocket French Fries Hamburger Fixes Fresh Oranges</p>	<p>Mini Corn Dogs 12 Turkey & Cheese Sub Cheese Ravioli w/Garlic Toast Ranch Seasoned Green Beans Fresh Baby Carrots Fruit Cup</p>	<p>Chicken Fajitas 13 Chicken Fried Steak Breaded Chicken Strip Salad (3rd-5th) Pinto Beans Mixed Vegetables Sliced Peaches</p>	<p>Pepperoni Pizza 14 Fish Nuggets PB&J Sandwiches Seasoned Corn Salad & Cherry tomatoes Fruit Cocktail Chocolate Pudding</p>
<p>Breaded Pork Chop 17 Dinner roll Tangerine Chicken w/Seasoned rice Pizza Munchable Fresh Salad Carrot Coins Asst. Fruit</p>	<p>Beef Tacos 18 Fajita Chicken Flatbread Refried Beans Salad w/diced tomatoes Asst. Fruit</p>	<p>19 NO LUNCH SERVED CLASS PARTIES</p>	<p>20 CHRISTMAS HOLIDAY</p>	<p>21 CHRISTMAS HOLIDAY</p>
<p>24 CHRISTMAS EVE HOLIDAY</p>	<p>25 CHRISTMAS!!</p>	<p>26 CHRISTMAS HOLIDAY</p>	<p>27 CHRISTMAS HOLIDAY</p>	<p>28 CHRISTMAS HOLIDAY</p>
<p>31 NEW YEARS EVE HOLIDAY</p>				



Breakfast Meal Prices:

Student Full Pay: \$2.25
 Student Reduced: \$0.40
 Staff/Adult: \$3.50

Water will be offered during lunch.

WISHING EVERYONE A VERY MERRY CHRISTMAS &
 A HEALTHY & HAPPY NEW YEAR!!

This institution is an equal opportunity provider.